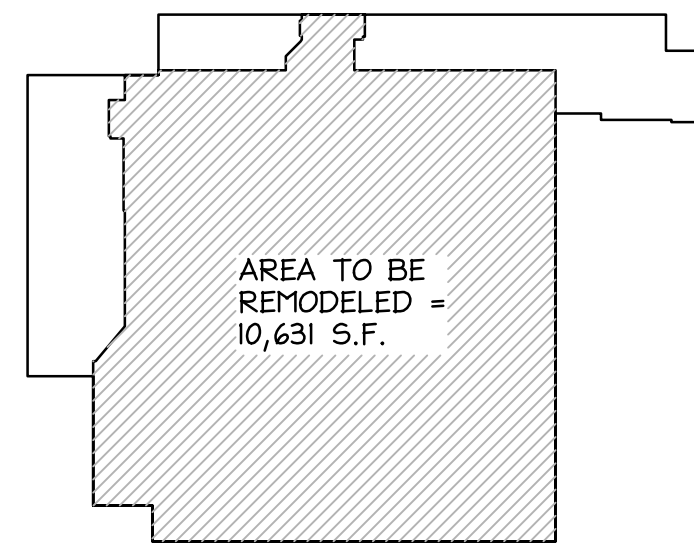


SPACE RESERVED FOR CITY OF
PORTLAND, MAINE ELECTRONIC STAMP

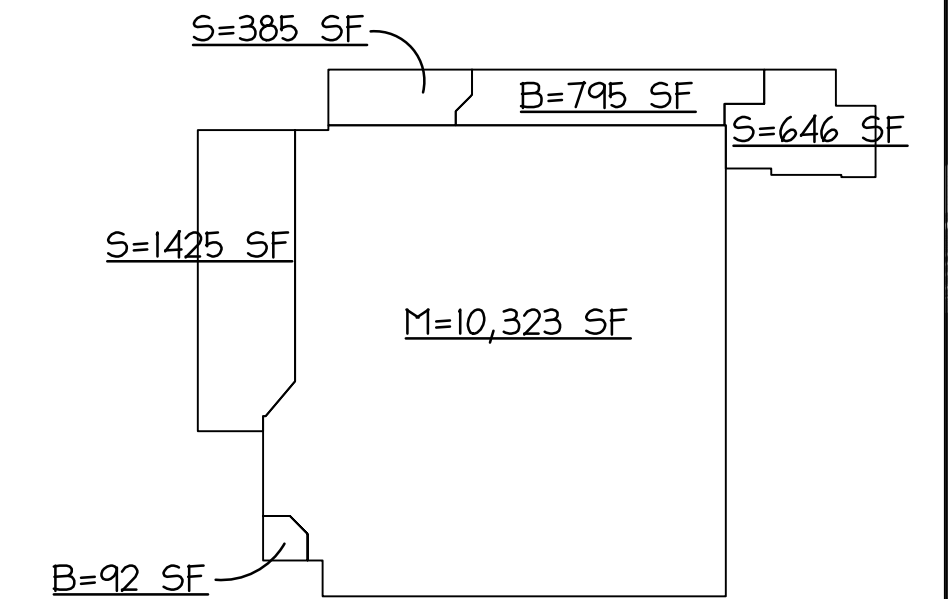
GROSS TOTAL FLOOR AREA
= 13,666 S.F.



RITE AID STORE #3277
PORTLAND, MAINE

GROSS TOTAL
FLOOR AREA =
13,666 S.F.

RITE AID STORE #3277
PORTLAND, MAINE



M=10,323 SF / 30 = 344 PERSONS
B=887 SF / 100 = 9 PERSONS
S=2,456 SF / 300 = 9 PERSONS
TOTAL OCCUPANTS = 362 PERSONS

RITE AID STORE #3277
290 CONGRESS STREET
PORTLAND, MAINE

LIFE SAFETY CODE SPECIFIC REVIEW:

2009 NFPA LIFE SAFETY 101 CODE

SEE BUILDING AND LIFE SAFETY CODE REVIEW UNDER SEPARATE COVER AS WELL WHERE THIS INFORMATION IS DUPLICATED AND INCLUDES ADDITIONAL CODE STUDY INFORMATION FOR 2009 INTERNATIONAL BUILDING CODE AND 2009 INTERNATIONAL EXISTING BUILDING CODE.

37.1 - MERCANTILE.

37.1.4.2.1 - SUBCLASSIFICATION OF OCCUPANCY - CLASS B.

37.1.6 - MIN. CONSTRUCTION REQUIREMENTS. NONE. SEE IBC CODE REQUIREMENTS LISTED ABOVE (2B, NON-COMBUSTIBLE).

37.2 - MEANS OF EGRESS REQUIREMENTS. REFERS TO CHAPTER 7 OF NFPA LIFE SAFETY 101.

CHAPTER 7 MEANS OF EGRESS

7.1.3.1 - EXIT ACCESS CORRIDORS. N/A

7.1.3.2 EXITS

7.1.5 HEADROOM. CONFORMS. > 7'-6" MIN.

7.2.2 STAIRS. N/A.

7.2.2.6.3.1 OUTSIDE STAIRS. CONFORMS.

7.2.5 RAMPS. N/A.

7.3.1.2 OCCUPANT LOAD FACTOR (NO CHANGES). SEE IBC CHAPTER 10 INFORMATION (UNDER SEPARATE COVER).

7.3.2 MEASUREMENT OF MEANS OF EGRESS.

7.3.4 MIN. WIDTH. 36" FOR NEW CONSTRUCTION. CONFORMS.

7.3.4.1.2 MIN. WIDTH 28" FOR EXISTING BUILDINGS. CONFORMS.

7.4 NUMBER OF MEANS OF EGRESS. 2 MIN., 3 PROVIDED (EXISTING).

7.5 ARRANGEMENT OF MEANS OF EGRESS.

7.5.1.2.1

- (1) PATH OF TRAVEL THROUGH RECEIVING AREAS TO BE MARKED PER 7.10.
- (2) DOORS TO COMPLY WITH 7.2.1 FOR SIGNAGE.

7.5.1.6 EXISTING TO REMAIN @AS 15'. PATH OF TRAVEL TO BE PAINTED ON FLOORS. SEE SECTION 37.2.5.11 BELOW (MERCANTILE USE SPECIFIC).

7.5.4.2 CONFORMS FOR EXIT REMOTENESS.

7.9 EMERGENCY LIGHTING. COMPLIES.

7.10 COMPLIES FOR EXIT SIGNAGE.

BUSINESS USE SPECIFIC SECTIONS:

37.2.2 MEANS OF EGRESS. COMPLIES.

37.2.2.3 STAIRS. N/A.

37.2.4 NUMBER OF EXITS, COMPLIES. 3 PROVIDED.

37.2.5.1 MEANS OF EGRESS ARRANGEMENT. EXISTING COMPLIES.

37.2.5.2 DEAD END CORRIDORS 50' MAX. COMPLIES.

37.2.5.3.1 COMMON PATH OF TRAVEL (SPRINKLERED). 100' MAX. COMPLIES.

37.2.5.4 AISLES. COMPLIES.

37.2.5.7 ONE-HALF OF EGRESS CAPACITY AT STREET ENTRANCE. COMPLIES (72' EGRESS WIDTH PROVIDED).

37.2.5.8 EGRESS THROUGH CHECKOUTS. NONE.

37.2.5.10 WHEELED CARTS. COMPLIES.

37.2.5.11 MEANS OF EGRESS THROUGH REAR ROOMS (SPRINKLERED).

- (1) NOT MORE THAN 50% OF EXIT ACCESS THROUGH STOREROOM. CONFORMS.
- (2) STOREROOMS NOT SUBJECT TO LOCKING. CONFORMS.
- (3) 44' MAIN AISLE. TO BE PAINTED ON CONCRETE FLOOR. SEE ARCHITECTURAL PLANS FOR PATHS.
- (4) 44' MAIN AISLE. DIRECT, DEFINED, CONTINUOUS, TO BE UNOBSTRUCTED. CONFORMS.

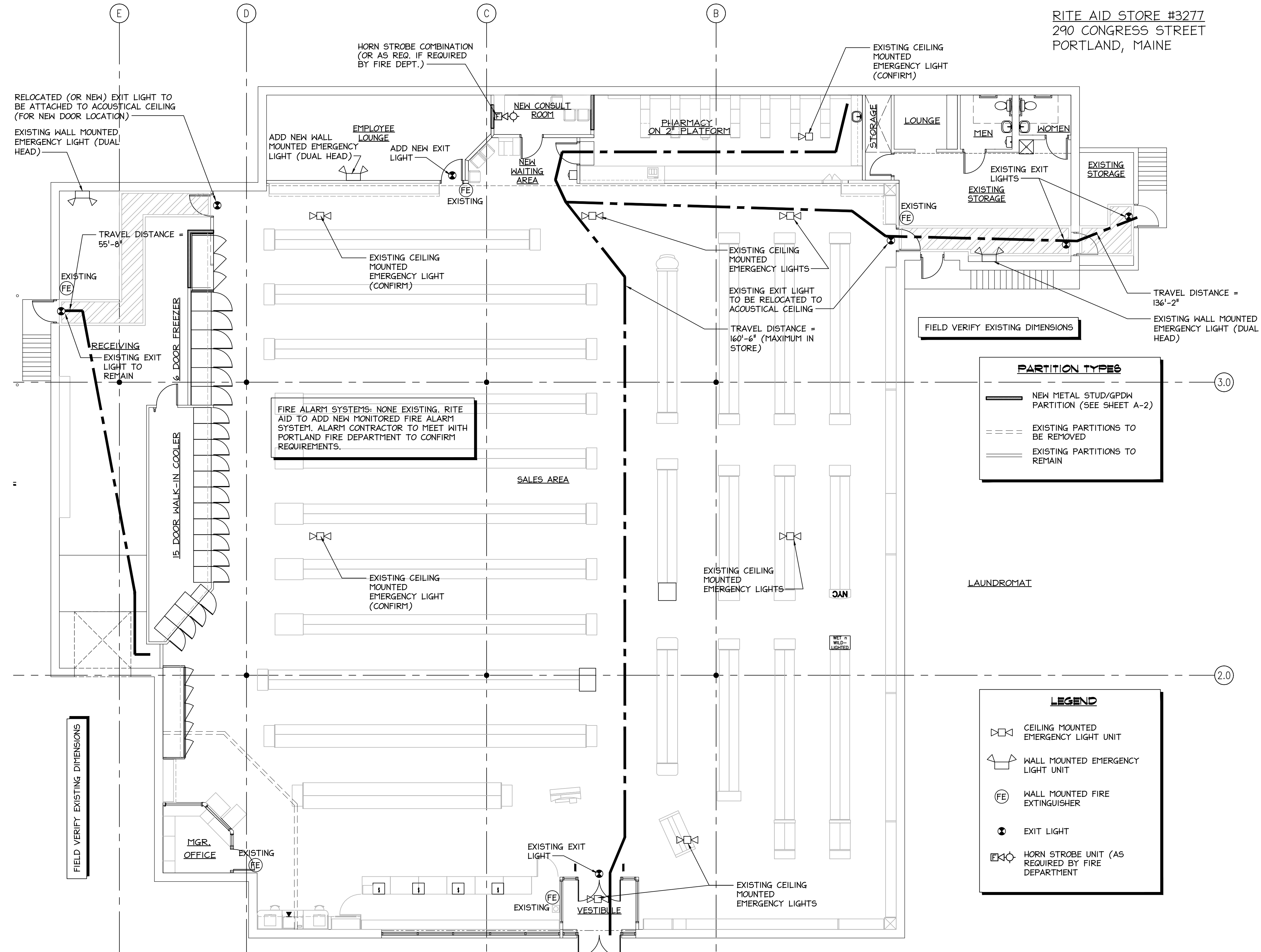
37.2.6 TRAVEL DISTANCE (SPRINKLERED) 250' MAX. COMPLIES.

37.2.8 ILLUMINATION OF MEANS OF EGRESS. COMPLIES

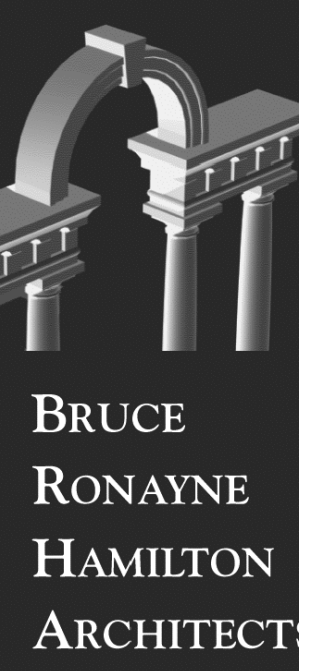
37.2.9 EMERGENCY LIGHTING. COMPLIES. EXIT SIGNS AT REAR OF SALES AREA ARE WALL MOUNTED AND WILL BE SUSPENDED FROM CEILING FOR BETTER VISIBILITY. NOTED ON PLANS.

37.3.3.2.1 INTERIOR WALL FINISHES - TO COMPLY WITH SECTION 10.2.

37.3.4 DETECTION, ALARM & COMMUNICATION SYSTEMS. ONLY REQUIRED FOR CLASS "A" MERCANTILE. NONE EXISTING. RITE AID TO ADD NEW MONITORED FIRE ALARM SYSTEM. ALARM CONTRACTOR TO MEET WITH PORTLAND FIRE DEPARTMENT TO CONFIRM REQUIREMENTS.



LIFE SAFETY PLAN
SCALE: 1/8" = 1'-0"



**BRUCE
RONAYNE
HAMILTON
ARCHITECT**

ARCHITECTURE
LAND PLANNING
INTERIOR DESIGN
3D VISUALIZATION

833 TURNPIKE ROAD
P.O. BOX 104
NEW IPSWICH
NEW HAMPSHIRE 03071

THIS DESIGN AND THE DRAWINGS THEREFORE, PREPARED FOR THIS PROJECT ARE THE PROPERTY OF THE ARCHITECT. BRUCE RONAYNE HAMILTON, ARCHITECT INC. AND THE DESIGN AND/OR DRAWING SHALL NOT BE REPRODUCED OR TRANSMITTED IN ANY FORM OR BY ANY MEANS, ELECTRONIC OR MECHANICAL, INCLUDING PHOTOCOPYING, RECORDING, OR BY ANY INFORMATION STORAGE AND RETRIEVAL SYSTEM, WITHOUT THE EXPRESS WRITTEN PERMISSION OF THE ARCHITECT. BRUCE RONAYNE HAMILTON ARCHITECTS INC. SHALL BE RESPONSIBLE FOR OBTAINING ALL NECESSARY PERMITS FROM ANY BUILDING DEPARTMENT, UNLESS OTHERWISE NOTED ON THE DRAWINGS. THE SIGNATURE OF THE ARCHITECT, BRUCE RONAYNE HAMILTON, ARCHITECTS INC.

ISSUED FOR GC BIDDING/BUILDING PERMIT
11-21-13
DATE: 11-21-13
DRAWN BY: [Signature]

PROJECT: **RITE AID STORE #3277 PPR**
290 CONGRESS STREET
PORTLAND, MAINE
SHEET NO.: **LS-1**
DATE: 11-21-13
DRAWN BY: [Signature]