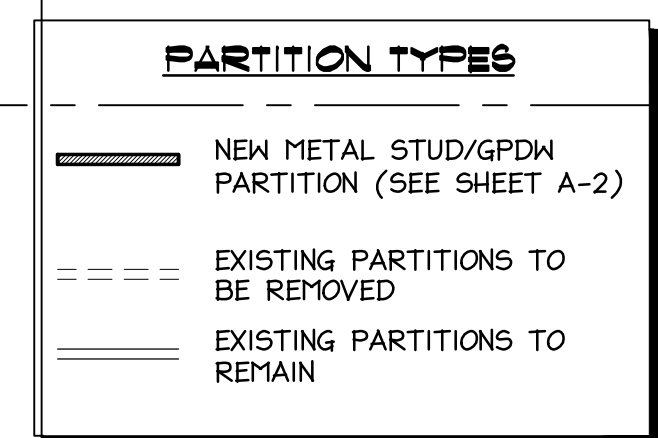
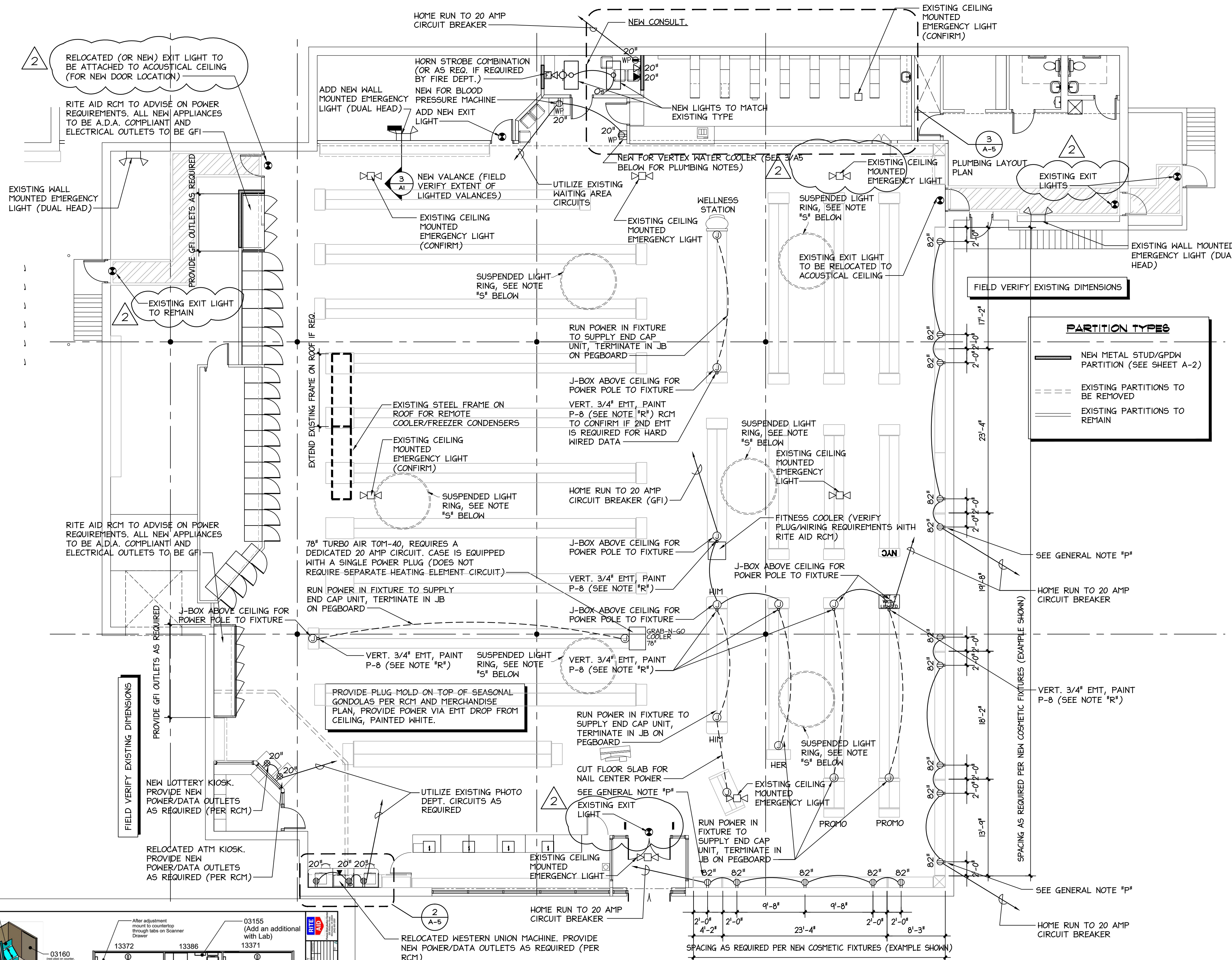


SPACE RESERVED FOR CITY OF PORTLAND, MAINE ELECTRONIC STAMP



- ### GENERAL NOTES
- UNLESS OTHERWISE NOTED, ALL RECEPTACLES ARE MOUNTED AT 20" AFF.
 - UNLESS OTHERWISE NOTED, ALL MOUNTING HEIGHTS LISTED ARE TO THE CENTER OF THE WALL BOX OR DEVICE.
 - OUTLETS AND JUNCTION BOXES IN FINISHED SPACES AND EXTERIOR ARE RECESSED UNLESS OTHERWISE NOTED.
- ### LEGEND
- ⊕ DUPLEX RECEPTACLE - MOUNT AT 20" AFF. UNLESS OTHERWISE NOTED
 - ⊕ WP DUPLEX RECEPTACLE - WEATHER PROOF
 - ⊕ GFI DUPLEX RECEPTACLE - GROUND FAULT INTERRUPTER
 - ⊕ WP GFI DUPLEX RECEPTACLE - WEATHERPROOF W/ GROUND FAULT INTERRUPTER
 - ⊕ QUAD RECEPTACLE - ISOLATED GROUND
 - ⊕ DUPLEX RECEPTACLE - ISOLATED GROUND
 - ⊕ QUAD RECEPTACLE - MOUNT AT 20" UNLESS OTHERWISE NOTED
 - ⊕ FLOOR MOUNTED DUPLEX RECEPTACLE INSTALLED UNDERNEATH GONDOLA.
 - ⊕ JUNCTION BOX
 - HOMERUN TO PANELBOARD
 - ABOVE GROUND CONDUIT
 - ▶ DATA RECEPTACLE
 - ⊕ TELEPHONE RECEPTACLE

- ### GENERAL NOTES :
- ALL TELEPHONE, DATA, COAX AND OTHER LOW VOLTAGE WIRING SHALL BE SUPPORTED WITH HANGERS ATTACHED TO ROOF STRUCTURE.
 - ALL WIRE TO BE RUN FROM THE CIRCUIT PANELS TO JUNCTION BOXES ARE TO BE IN EMT (ELECTRICAL METALLIC TUBING) UNLESS APPROVED IN WRITING BY THE RITE AID CONSTRUCTION MANAGER.
 - FLEX CONDUIT CAN ONLY BE USED FOR THE FINAL CONNECTION FROM A JUNCTION BOX TO EQUIPMENT OR LIGHT FIXTURE. IT IS NOT TO BE RUN FROM THE CIRCUIT PANEL TO A JUNCTION BOX OR WITHIN A WALL OR PARTITION.
 - ALL 20 AMP CIRCUITS ARE TO USED 12 GAUGE COPPER WIRE MINIMUM.
 - ALL WALL PLATES ARE TO MATCH EXISTING PLATES IN SIZE, COLOR AND MATERIAL.
 - ALL PHONE AND DATA CABLES ARE TO BE WIRED TO J-BOXES WITH PLATES WITH FEMALE JACKS LABELED AS NOTED ON DRAWINGS.
 - ALL COMPUTER AC WALL OUTLETS ARE TO BE ISOLATED GROUND TYPE (WITH SMALL ORANGE TRIANGLE SYMBOL).
 - POWER POLE DROPS FROM CEILING SHALL BE PROVIDED PER DIRECTION OF RITE AID CONSTRUCTION MANAGER.
 - ALL NEW OUTLETS NEAR WATER OR POSSIBLE WET AREAS ARE TO BE GFI PROTECTED.
 - ALL NEW OUTLETS IN WAITING AREA AND CONSULTATION AREAS ARE TO HAVE WEATHER PROOF COVERS.
 - STANDARD AC WALL OUTLET HEIGHT SHALL MATCH THE HEIGHT OF EXISTING OUTLETS, OR SHALL BE INSTALLED 20" AFF. IF THERE ARE NO EXISTING OUTLETS IN THAT AREA.
 - ALL ELECTRICAL WORK TO BE DONE IN ACCORDANCE WITH THE LATEST NEC, STATE AND LOCAL CODES.
 - ALL PLUMBING WORK TO BE DONE IN ACCORDANCE WITH THE LATEST STATE AND LOCAL CODES.
 - ELECTRICAL AND PLUMBING CONTRACTORS TO APPLY FOR INDIVIDUAL PERMITS AND TO PAY ASSOCIATED FEES TO MUNICIPALITY.
 - POWER AND DATA DROPS AT SALES FIXTURES: 3/4" EMT PAINTED P-8 (TYPICAL UNLESS OTHERWISE NOTED).
 - NEW OUTLETS AT COSMETIC WALL DISPLAY: LOCATE AT HEIGHTS NOTED ON PLAN SPECIFIC TO EACH COSMETIC BRAND (VERIFY WITH RCM). RUN POWER FROM EXISTING VALANCE LIGHTING TO OUTLET LOCATIONS (VERIFY LOCATIONS WITH RCM AND FINAL MERCHANDISING PLAN). "PIE-TAIL" OFF WIRING AWAY FROM LINE OF SITE. MOUNT OUTLETS TO PEGBOARD. SPACING SHOWN BASED ON METHUEN, MA STORE. LENGTH OF DISPLAY MAY VARY PER STORE. INSTALL OUTLETS PRIOR TO MERCHANDISE STOCKING (COORDINATE WITH STORE MANAGER).
 - REFER TO SEGMENTATION SCOPE OF WORK FOR ADDITIONAL NOTES & G.C. TASKS.
 - CONDUIT PENETRATIONS AT CEILINGS SHALL BE FINISHED WITH A PIPE COLLAR (PER APPLICABLE SEG SEGMENTATION REMODEL PROGRAM MANUAL DOCUMENTS UNDER SEPARATE COVER). REFER TO RITE AID SEGMENTATION REMODEL CONSTRUCTION UPDATE BULLETINS FROM RCM FOR MOST RECENT INSTALLATION PRACTICES ADOPTED BY RITE AID. ALL CONDUITS TO BE VERTICAL WITH NO BENDS.
 - GENERAL CONTRACTOR TO REVIEW ALL EXISTING EMERGENCY LIGHTING AND UPGRADE/SUPPLEMENT AS REQUIRED BY CODE AND LOCAL AUTHORITY HAVING JURISDICTION.

ELECTRICAL FLOOR PLAN

SCALE: 1/8" = 1'-0"

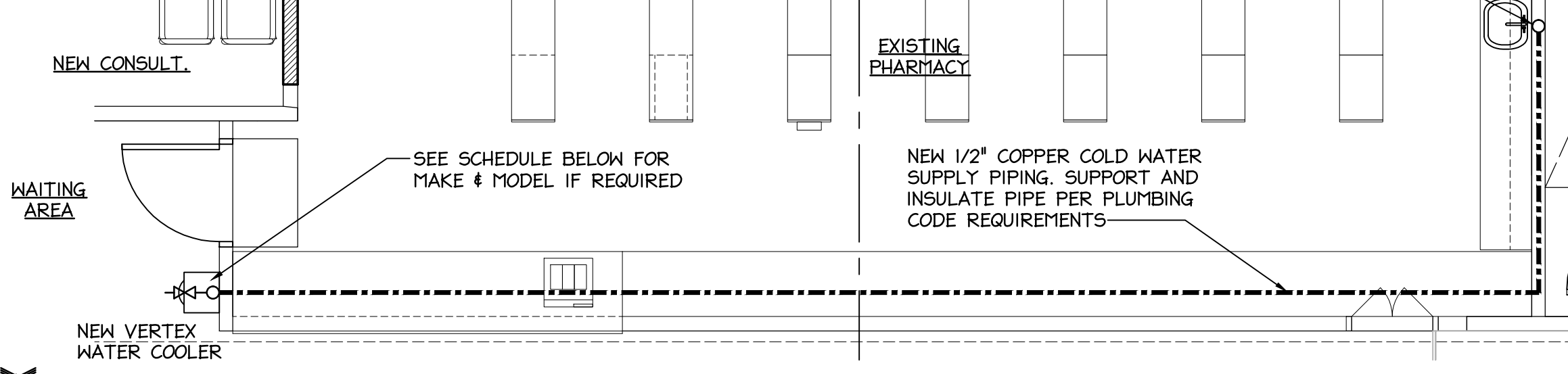


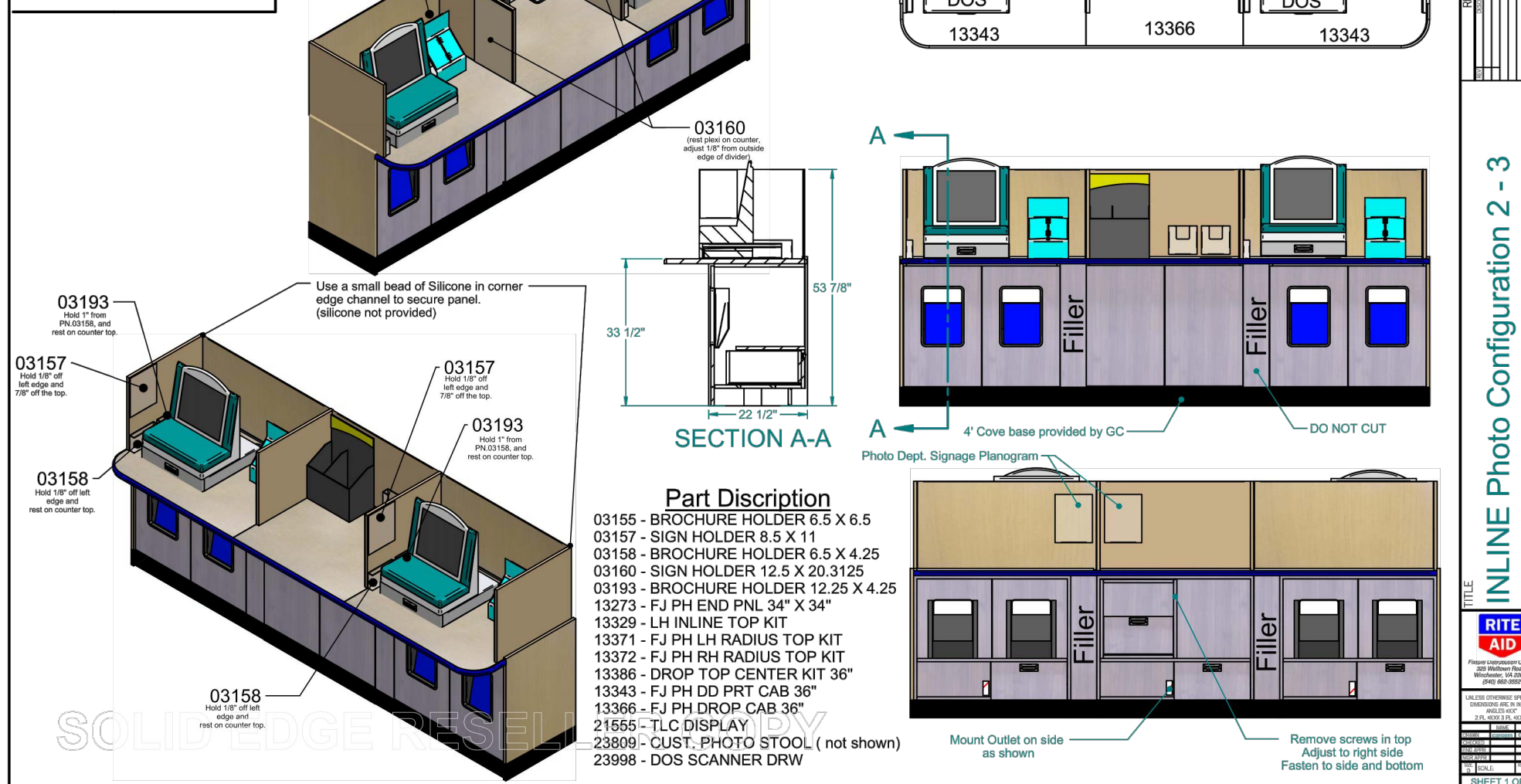
PHOTO CABINETRY

NO SCALE

FIXTURE	DESCRIPTION	CW	HW	SAN	VENT	MANUFACTURER	MODEL NUMBER	REMARKS
WF	WATER COOLER	1/2"	-	1-1/2"	1-1/4"	VERTEX	PWC1010F	PURE WATER COOLER W/#C4160 CUP HOLDER SUPPLIED AND INSTALLED BY G.C. SHALL PROVIDE 1/2"DCW CONNECTION. DRAIN NOT REQUIRED FOR UNIT, BUT PROVIDE WALL DRAIN 22" AFF WITH ZURN Z1441 WALL CLEANOUT ACCESS COVER FOR FUTURE USE.

Notes:

- Must dowel Cabinets to Counter top.
- After the installation of the counter top. Cut stretcher to accommodate grommets.



BRUCE RONAYNE HAMILTON ARCHITECT

ARCHITECTURE LAND PLANNING INTERIOR DESIGN 3D VISUALIZATION

833 TURNPIKE ROAD
P.O. BOX 104
NEW IPSWICH
NEW HAMPSHIRE 03071

THIS DESIGN AND THE DRAWINGS THEREFOR ARE THE PROPERTY OF THE ARCHITECT. BRUCE RONAYNE HAMILTON ARCHITECT INC. AND THE DESIGN AND/OR DRAWING SHALL BE KEPT IN CONFIDENCE AND NOT REPRODUCED OR USED FOR ANY OTHER PROJECT WITHOUT THE WRITTEN PERMISSION OF THE ARCHITECT. BRUCE RONAYNE HAMILTON ARCHITECTS, INC. IS A REGISTERED PROFESSIONAL ENGINEERING FIRM. ANY BUILDING DEPARTMENT, UNLESS OTHERWISE NOTED, SHALL BE REQUIRED TO OBTAIN THE ORIGINAL SET OF DRAWINGS FROM THE ARCHITECT. BRUCE RONAYNE HAMILTON ARCHITECTS INC.

PROJECT: RITE AID STORE #3217 PPR
290 CONGRESS STREET
PORTLAND, MAINE

SUBJECT: ELECTRICAL LAYOUT PLAN

SCALE: 1/8" = 1'-0"

DATE: 11-14-13

DRAWN BY: [Signature]

SHEET NO. 13-III

ADDED EXIT LIGHT NOTES
ISSUED FOR GC BIDDING/BUILDING PERMIT