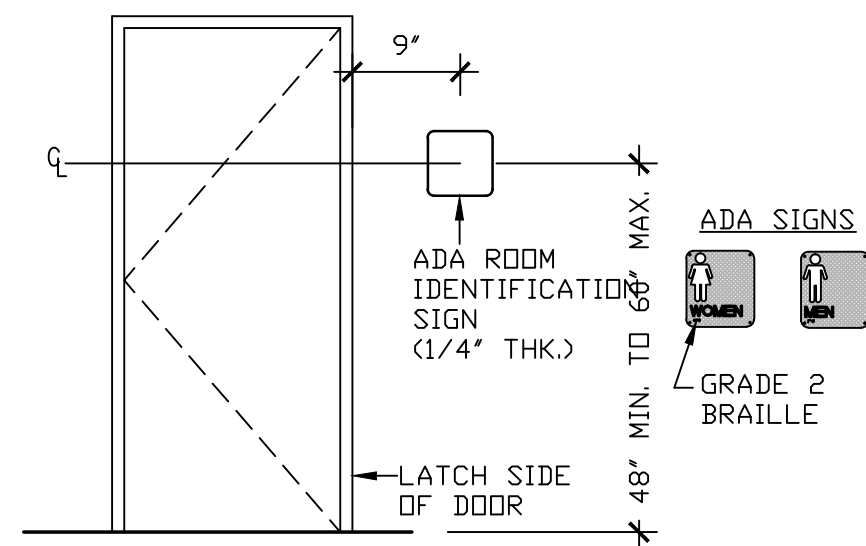
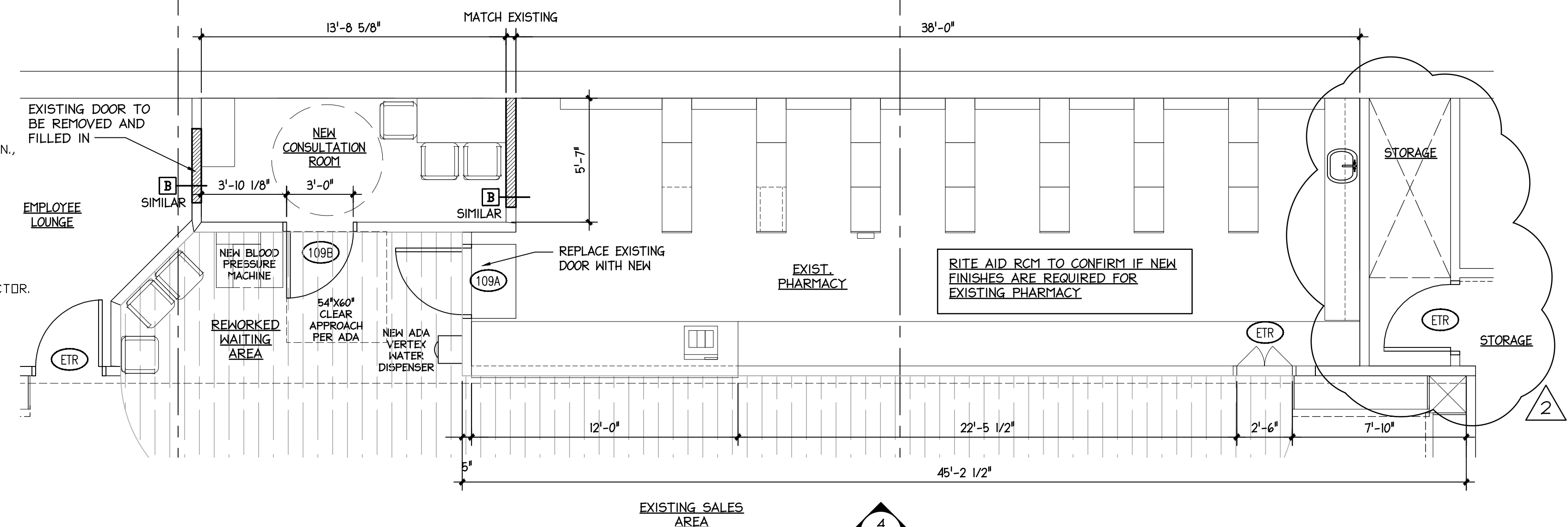


SPACE RESERVED FOR CITY OF PORTLAND, MAINE ELECTRONIC STAMP

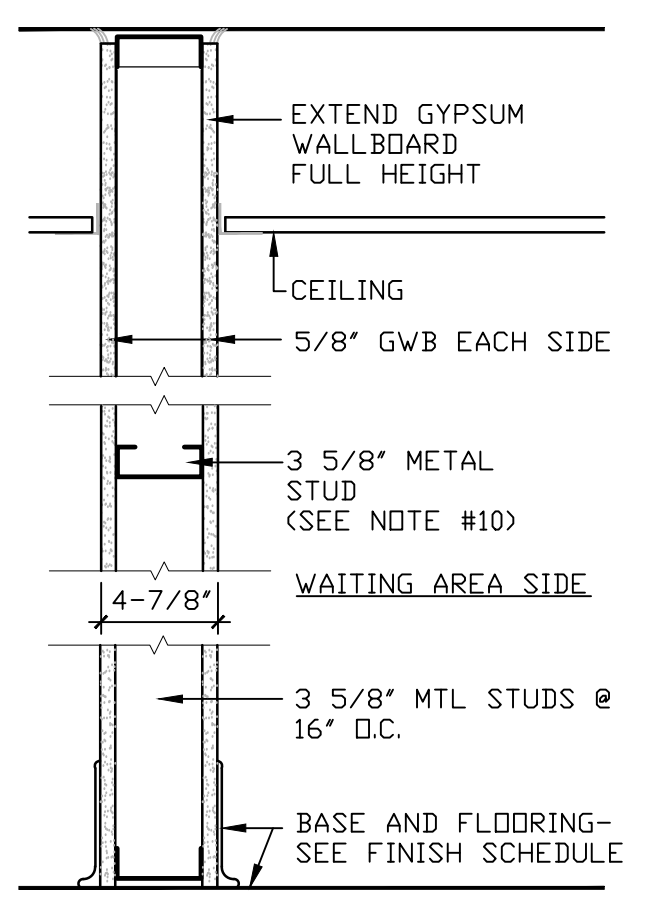
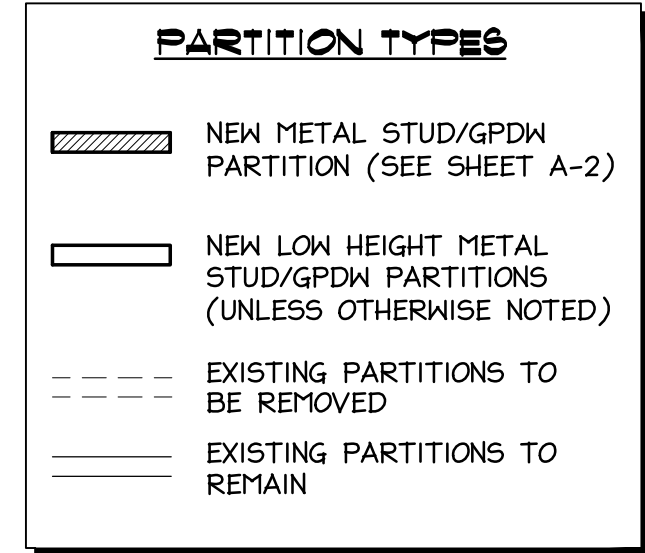


**6 A-2 ADA SIGNAGE**  
NOT TO SCALE

- NOTES**
1. CHARACTERS AND SYMBOLS SHALL CONTRAST WITH THEIR BACKGROUND.
  2. IDENTIFICATION SYMBOLS ARE TO BE ON WALL ADJACENT DOOR 60" ABOVE FLOOR AND ARE TO BE DISTINCTLY DIFFERENT FROM DOOR AND WALL IN COLOR AND CONTRAST.
  3. PROVIDE ROOM IDENTIFICATION SIGN ON LATCH SIDE OF DOOR.
  4. LETTERS & NUMBERS ON SIGNS SHALL BE RAISED 1/32" MIN. SHALL BE A MIN. OF 5/8" HIGH & SHALL BE SANS-SERIF UPPERCASE CHARACTERS. A.D.A. SIGNAGE ACCOMPANIED BY GRADE 2 BRAILLE.
  5. REGULATORY SIGNS TO BE TYPICALLY ADA COMPLIANT TACTILE 3-D PLAQUES PER CODE REQUIREMENTS.
  6. SIGNS TO BE A TYPICAL ONE PIECE INJECTION MOLDED FABRICATION WITH RAISED SECOND SURFACE GRAPHICS.
  7. STANDARD BLUE ADA SIGN PROVIDED BY GENERAL CONTRACTOR. MODEL # MEN ADA 304, AND MODEL # WOMEN ADA 305. DIMENSIONS: 6"x9".
  8. BRAILLE SHOWN IS FOR PLACEMENT ONLY. USE CORRECT BRAILLE FOR SIGN PRODUCTION.
  9. THE ADA SIGNAGE CAN BE OBTAINED FROM EMECCO CORPORATION. CONTACT INFO. PH# 1-800-273-3984 (Ext.7502)



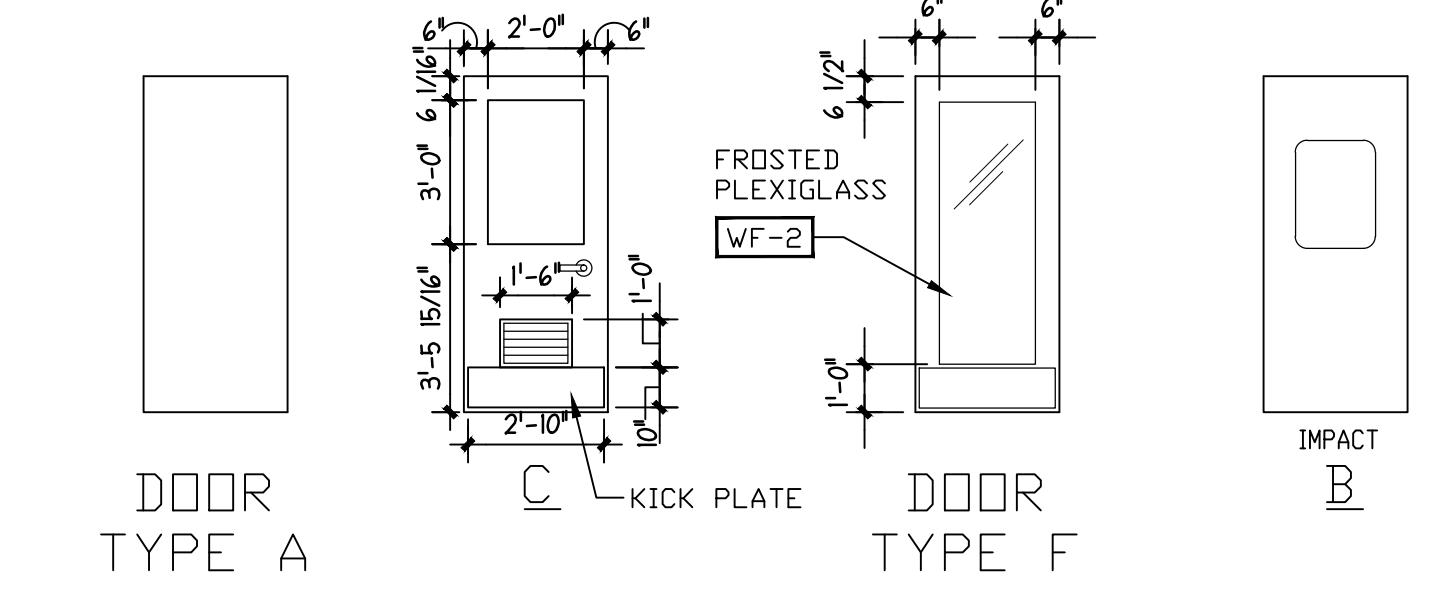
**1 A-2 ENLARGED FLOOR PLAN**  
SCALE: 1/4" = 1'-0"



**3 A-2 WALL TYPES**  
SCALE: 1/2" = 1'-0"

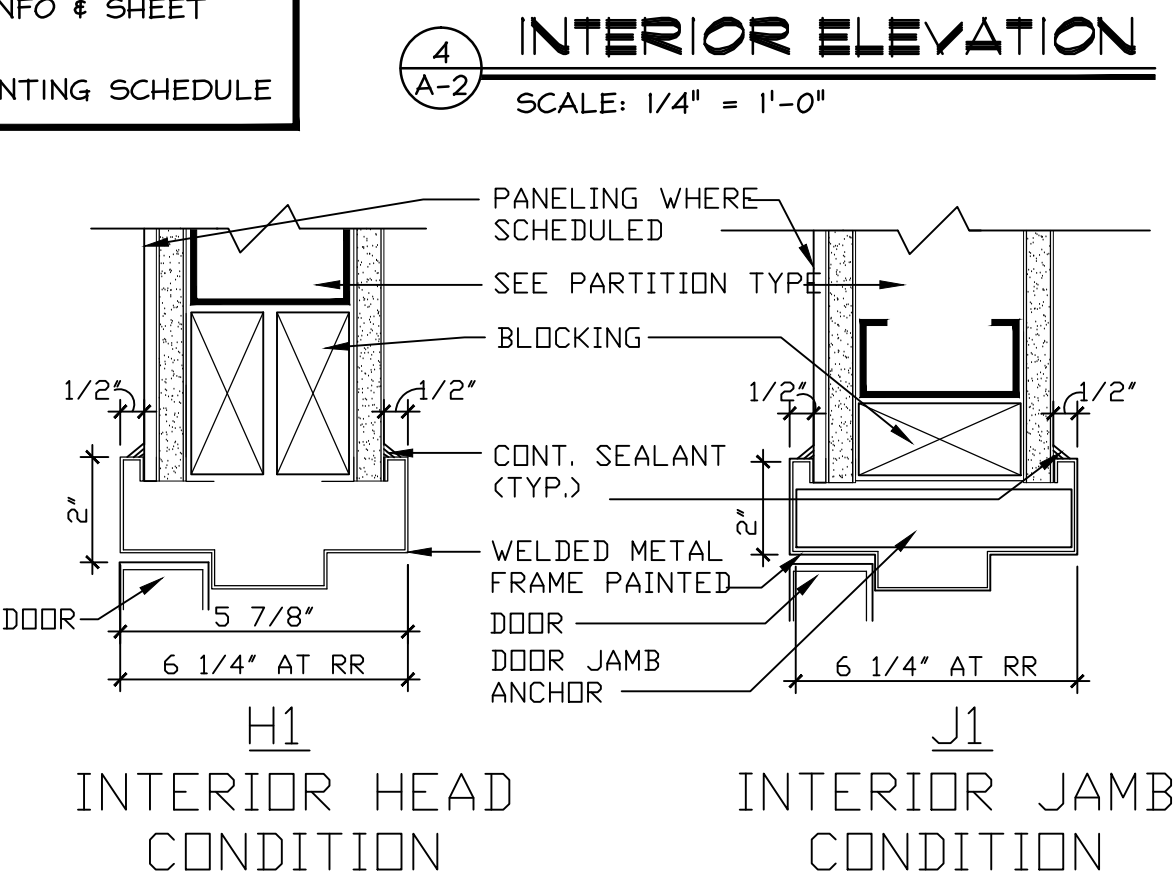
**NOTES FOR SUBSTRATE (DRYWALL) TREATMENT/REPAIR AT WALL AREA TO RECEIVE NEW "GREEN LEAVES" WALL GRAPHIC:**

1. MARLITE ON THE ENTIRE FRONT WALL TO BE REMOVED. DRYWALL WILL NEED TO BE REMOVED AND REPLACED AS NECESSARY DUE TO THE DAMAGE LEFT BEHIND FROM MARLITE ADHESIVE TEARING THE DRYWALL FACE.
  2. RX EXISTING FRONT WINDOW TRIMS (SALES SIDE) ARE INSTALLED ON TOP OF THE MARLITE WALL PANELS IN SOME INSTANCES (GC TO REVIEW). INSIDE FRAME THAT THE CASING IS ATTACHED TO MUST BE REMOVED AND CUT BACK BY 1/4", AND THEN RE-INSTALLED AS WELL AS THE BUILD-OUTS AND THE CASING TRIM.
  3. FILL / SAND / PRIME / PAINT WOOD TRIMS FOR NEAT, FINISHED APPEARANCE AS REQUIRED.
  4. THE PRE-WALL COVERING APPLICATION IS INTENDED TO PREP THE WALL TO RECEIVE WALL COVERING PASTE AND IS NOT INTENDED TO SEAL OR COVER THE EXISTING PAINT. INSL-X SUPERIOR SPECIALTY COATINGS WP 3001 & SHERWIN WILLIAMS LATEX PRIMER SEALER B51 THAT IS WHITE IN COLOR TO BE USED TO SEAL OLD PAINT COLOR AND CREATE A WHITE BACKGROUND.
  5. REMOVE EXISTING MARLITE OR ANY WALL COVERING AND PREPARE SURFACE FOR NEW RX WALL MURAL COVERING BY BLOCKING, SHEET ROCK, PRIME, TAPE AND PASTE, ETC...
- EXECUTION**
- 1.1 EXAMINATION
    - A. EXAMINE SUBSTRATES AND CONDITIONS, WITH INSTALLER PRESENT, FOR COMPLIANCE WITH REQUIREMENTS FOR LEVELNESS, WALL PLUMBNESS, MAXIMUM MOISTURE CONTENT, AND OTHER CONDITIONS AFFECTING PERFORMANCE OF WORK.
    - B. PROCEED WITH INSTALLATION ONLY AFTER UNSATISFACTORY CONDITIONS HAVE BEEN CORRECTED.
  - 1.2 PREPARATION
    - A. COMPLY WITH MANUFACTURER'S (WALL MURAL) WRITTEN INSTRUCTIONS FOR SURFACE PREPARATION. INCLUDE APPLICATION OF SEALER.
    - B. SHERWIN WILLIAMS PRE-WALLCOVERING PRIMER.
  - 1 GYPSUM BOARD ASSEMBLIES
    - A. GENERAL: APPLY JOINT TREATMENT AT GYPSUM BOARD JOINTS (BOTH DIRECTIONS); FLANGES OF CORNER BEAD, EDGE TRIM, AND CONTROL JOINTS; PENETRATIONS; FASTENER HEADS, SURFACE DEFECTS, AND ELSEWHERE AS REQUIRED TO PREPARE GYPSUM BOARD SURFACES FOR DECORATION AND LEVELS OF GYPSUM BOARD FINISH INDICATED.
    - B. PRE-FILL OPEN JOINTS, ROUNDED OR BEVELED EDGES, AND DAMAGED AREAS USING SETTING-TYPE JOINT COMPOUND.
    - C. APPLY JOINT TAPE OVER GYPSUM BOARD JOINTS AND TO TRIM ACCESSORIES WITH CONCEALED FACE FLANGES AS RECOMMENDED BY TRIM ACCESSORY MANUFACTURER AND AS REQUIRED TO PREVENT CRACKS FROM DEVELOPING IN JOINT COMPOUND AT FLANGE EDGES.
    - D. LEVELS OF GYPSUM BOARD FINISH: PROVIDE THE FOLLOWING LEVELS OF GYPSUM BOARD FINISH PER GA-214.
      - I. LEVEL 4, INSTALL AS FOLLOWS:
        - A. EMBEDDING AND FIRST COAT: ALL-PURPOSE READY-MIXED JOINT COMPOUND.
        - B. FILL (SECOND) COAT: ALL-PURPOSE READY-MIX JOINT COMPOUND.
        - C. FINISH (THIRD) COAT: READY-MIX TOPPING COMPOUND.
        - D. ALL JOINTS AND INTERIOR ANGLE SHALL BE TAPE EMBEDDED IN JOINT COMPOUND AND THREE SEPARATE COATS OF JOINT COMPOUND APPLIED OVER ALL JOINTS, ANGLES, FASTENER HEADS AND ACCESSORIES.
        - E. SURFACE SHALL BE SMOOTH AND FREE OF TOOL MARKS AND RIDGES.



DOOR #	SIZE	DOOR			FRAME			KICK PLATE	HARDWARE	KEY SCHEDULE	NOTES				
		MATERIAL	TYPE	FINISH	MATERIAL	TYPE	JAMB HEAD FINISH					SIZE	LOCATION	SET NO.	KEY SIDE
104	3'-0" X 7'-0"	HM	C	PT-04	HM	1	J1	H1	PT-04	-	10' X 34" SALES SIDE OF DOOR	2	103	KEY #2	OFFICE DOOR WITH FLOOR STOP. (MIRRORED GLASS).
109A	3'-0" X 7'-0"	HM	C	PT-03	HM	1	J1	H1	PT-02	-	10' X 34" SALES SIDE OF DOOR	3	111	KEY #4	PHARMACY DOOR WITH FLOOR STOP. (PT-02 DOOR AND FRAME INSIDE OF PHARMACY).
109B	3'-0" X 7'-0"	WD	F	PL-1	HM	1	J1	H1	PT-03	-	10' X 34" SALES SIDE OF DOOR	3	112	KEY #4	CONSULTATION ACCESS DOOR. DOOR FRAME TO BE PAINTED PER RITE AID RCM AND MOST CURRENT GENUINE WELLBEING FINISH SCHEDULED. DOOR TO BE NEVAMAR SANTA ROSA PLUM TREE W22001T
G.C. TO PURCHASE DOOR #109B THROUGH "LOCKNET", ROBERT OWEN (800) 887-4307, Rob@locknet.com															
114B	3'-0" X 7'-0"	POLYM CELL	B	MANUF	STL	1	J2	H2	PT-04	-	N/A	MANUF	NONE	NONE	CHASE-DURUS MODEL #NW 3011, BI-PARTING DOORS - COLOR: CHOCOLATE BROWN

**2 A-2 DOOR SCHED. & NOTES**  
SCALE: NOT TO SCALE



- 1.1 MATERIALS FOR WF-2 PLEXIGLASS AT DOOR TYPE "F"
  - A. Uncoated Monolithic Cell-Cast Acrylic Sheet: ASTM D4802, Category A-1, Type UVF (UV filtering), Finish I (smooth or polished).
  - Products:
    - a. CYRO Industries; Acrylite G P-95
  2. Nominal Thickness: 3/4 inch.
  - B. Translucent Color: White, with visible light transmittance of not more than 50 percent for 0.117-inch- (2.9-mm-) thick sheet, measured per ASTM D1003.

- HARDWARE SET NUMBER 2 (#104)**
- 1 FLOOR BUMPER 406 1/2 X PA 28 X HB-IVES
  - 1-1/2 PAIR BUTTS, 4-1/2 X 4-1/2 STANLEY FBB 191 X US 26D NRP
  - 1 CLOSER, CORBIN-RUSSWIN DC 6210X 689 X M54
  - 1 LOCK, CORBIN-RUSSWIN CL 3357 NZD X 626 X 2 3/4" B.S. (STOREROOM); NOT FOR DOOR #103
  - 1 LOCK/LATCH GUARD-IVES LG13 U532D

- HARDWARE SET NUMBER 3**
- 1 FLOOR BUMPER 406 1/2 X PA 28 X HB-IVES
  - 1-1/2 PAIR BUTTS, 4-1/2 X 4-1/2 STANLEY FBB 191 X US 26D NRP
  - 1 CLOSER, CORBIN-RUSSWIN DC 6210X 689 X M54
  - 1 LOCK, CORBIN-RUSSWIN CL 3357 NZD X 626 X 2 3/4" B.S. (STOREROOM)
  - 1 LOCK/LATCH GUARD-IVES LG13 U532D
  - 1 KICK PLATE, 10" X 34" SERIES 8400 (NOT FOR #109B).

KEY SET #4 IS TO HAVE 6 COPIES. THESE ARE SUPPLIED BY THE GC - ALL OF THE LOCKSETS FOR THE KEY SETS WHICH ARE SUPPLIED BY THE GC ARE TO BE TURNED OVER TO RITE AID PER THE DIRECTION OF THE RITE AID CONSTRUCTION MANAGER. - THE GC IS TO SUPPLY ONE BLANK KEY FOR EACH LOCKSET.

THIS DESIGN AND THE DRAWINGS THEREOF, PREPARED FOR THIS PROJECT, ARE THE PROPERTY OF THE ARCHITECT. BRUCE RONAYNE HAMILTON, ARCHITECT INC. AND THE DESIGN AND/OR DRAWING SHALL BE KEPT IN CONFIDENCE AND NOT TO BE REPRODUCED OR USED FOR ANY OTHER PROJECT WITHOUT THE WRITTEN PERMISSION OF THE ARCHITECT. BRUCE RONAYNE HAMILTON ARCHITECTS, INC. SHALL BE SOLELY RESPONSIBLE FOR ANY BUILDING DEPARTMENT, UNLESS OTHERWISE NOTED. THE ORIGINAL SET OF DRAWINGS SHALL BE KEPT IN THE ARCHITECT'S OFFICE. SIGNATURE OF THE ARCHITECT, BRUCE RONAYNE HAMILTON, ARCHITECTS INC.

PROJECT:	11-21-13	11-14-13
ISSUED FOR:	REVISED PER EXISTING CONDITIONS	ISSUED FOR GC BIDDING/BUILDING PERMIT
DATE:	11-21-13	11-14-13

PROJECT: **RITE AID STORE #3217 PPR**  
290 CONGRESS STREET  
PORTLAND, MAINE  
SUBJECT: **PHARMACY PLANS, EVOLUTION & RETAIL**