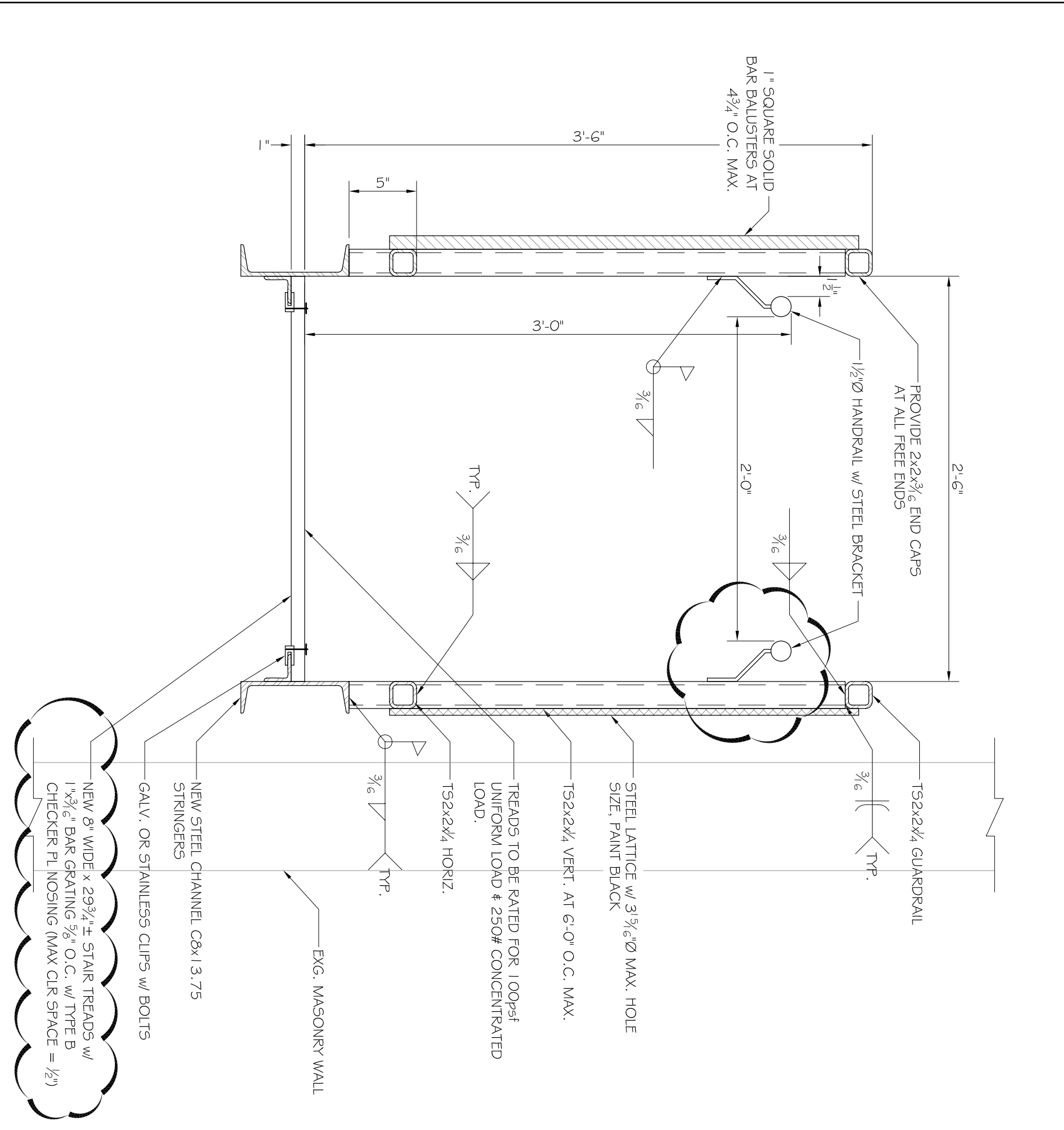
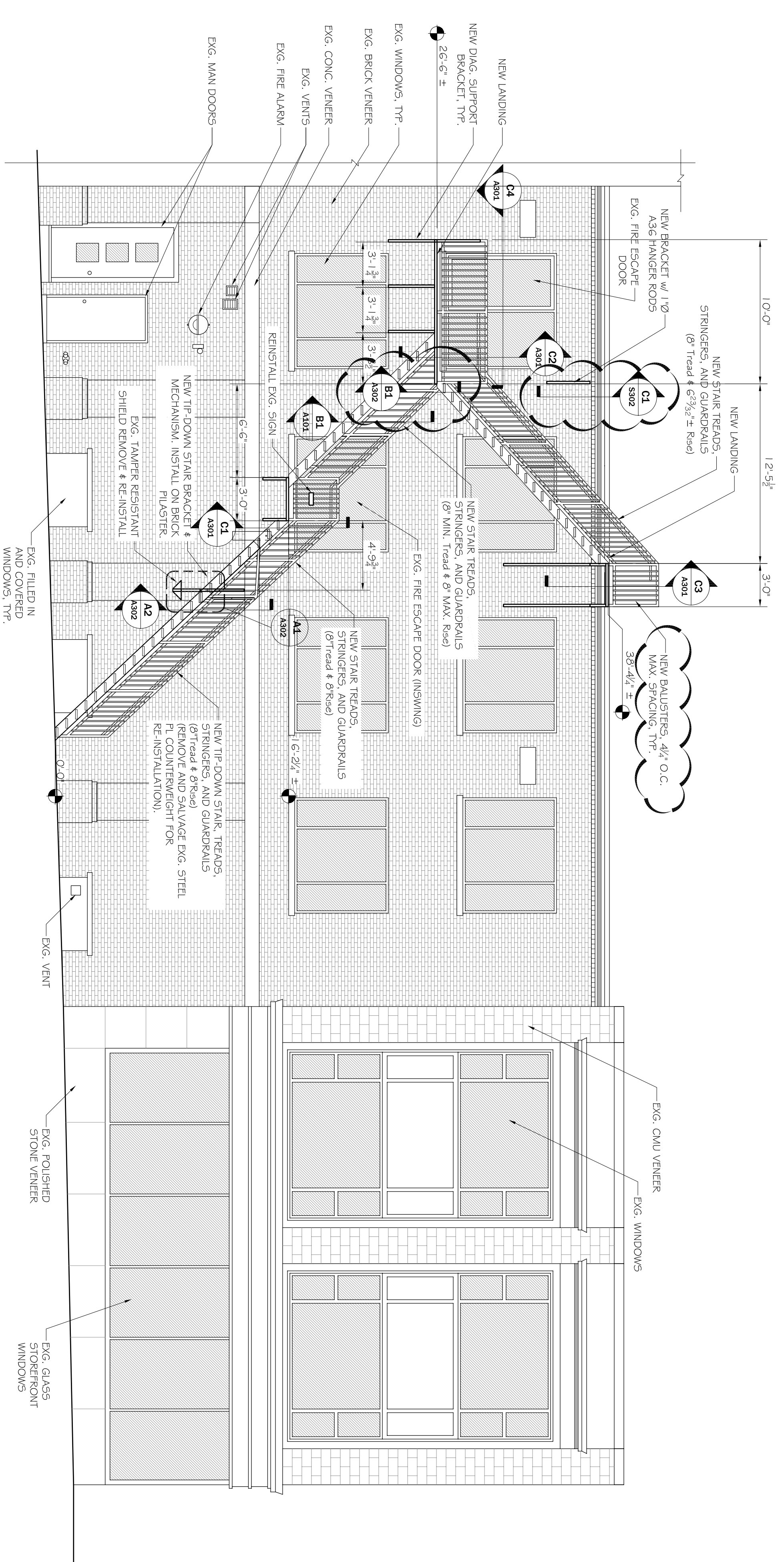


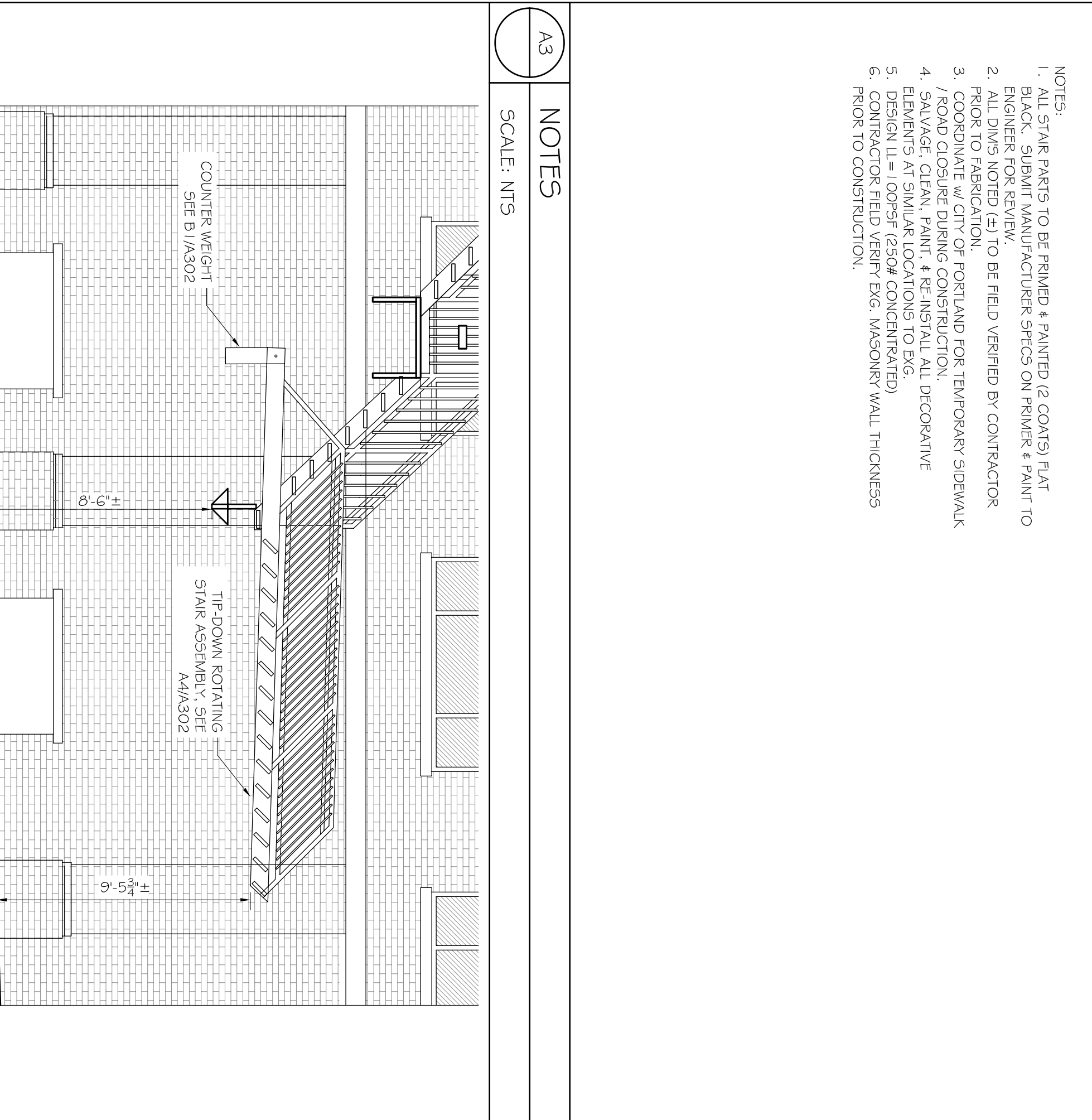
B2
EXISTING ELEVATION
SCALE: 3/16" = 1'-0"



B1
TYPICAL STAIR SECTION
SCALE: 1/2" = 1'-0"



A2
REPLACEMENT FIRE ESCAPE STAIR
SCALE: 3/16" = 1'-0"



A1
ELEVATION AT TIP-DOWN STAIR IN UP POSITION
SCALE: 1/2" = 1'-0"

- A3**
NOTES
SCALE: NTS
1. ALL STAIR PARTS TO BE PRIME & PAINTED (2 COATS) PLAT ENGINEER FOR REVIEW.
 2. ALL DIMS NOTED (A) TO BE FIELD VERIFIED BY CONTRACTOR PRIOR TO FABRICATION.
 3. COORDINATE w/ CITY OF PORTLAND FOR TEMPORARY SIDEWALK ROAD CLOSURE DURING CONSTRUCTION.
 4. REMOVE EXISTING DECORATIVE ELEMENTS AT SIMILAR LOCATIONS TO EXG.
 5. DESIGN LL = 100PSF (250# CONCENTRATED)
 6. CONTRACTOR FIELD VERIFY EXG. MASONRY WALL THICKNESS PRIOR TO CONSTRUCTION.

REVISIONS			
No.	BY	DESCRIPTION	DATE
1	ASW	ADDENDUM #1 - ADDITIONAL DETAILS	11/16/10
2	ASW	REV. PER CITY OF PORTLAND	12/28/10

PROJECT: **STENHOUSE PUBLISHERS**
PORTLAND, MAINE
FOR:

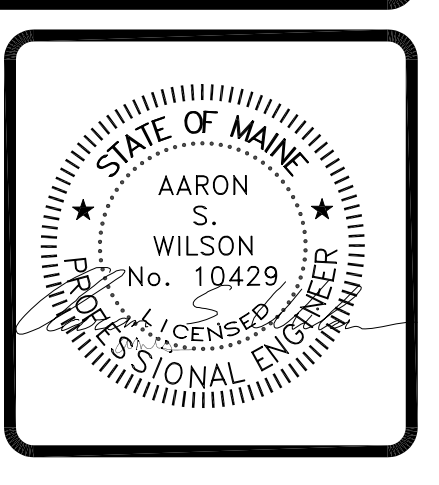
SHEET TITLE:
FIRE ESCAPE STAIR EXTERIOR ELEVATIONS
ISSUED FOR PERMITTING

THESE DRAWINGS, SPECIFICATIONS AND ELECTRONIC FILE ARE THE PROPERTY OF ASSOCIATED DESIGN PARTNERS, INC. NO REUSE, REPRODUCTION, OR OTHER USE OF THIS DOCUMENT WITHOUT WRITTEN CONSENT IS PERMITTED.

ASSOCIATED DESIGN PARTNERS INC.

80 Leighton Road
Falmouth, Maine 04105

Office: (207) 878-1751
Fax: (207) 878-1788
E-Mail: adp@adengineering.com



DATE: 11-10-10
SCALE: AS NOTED
DESIGN BY: ASW
DRAWN BY: SSC
PROJECT NUMBER:
FILE #: 10221-AS01.DWG
PROJECT NUMBER:
10227
SHEET NO.:
A101