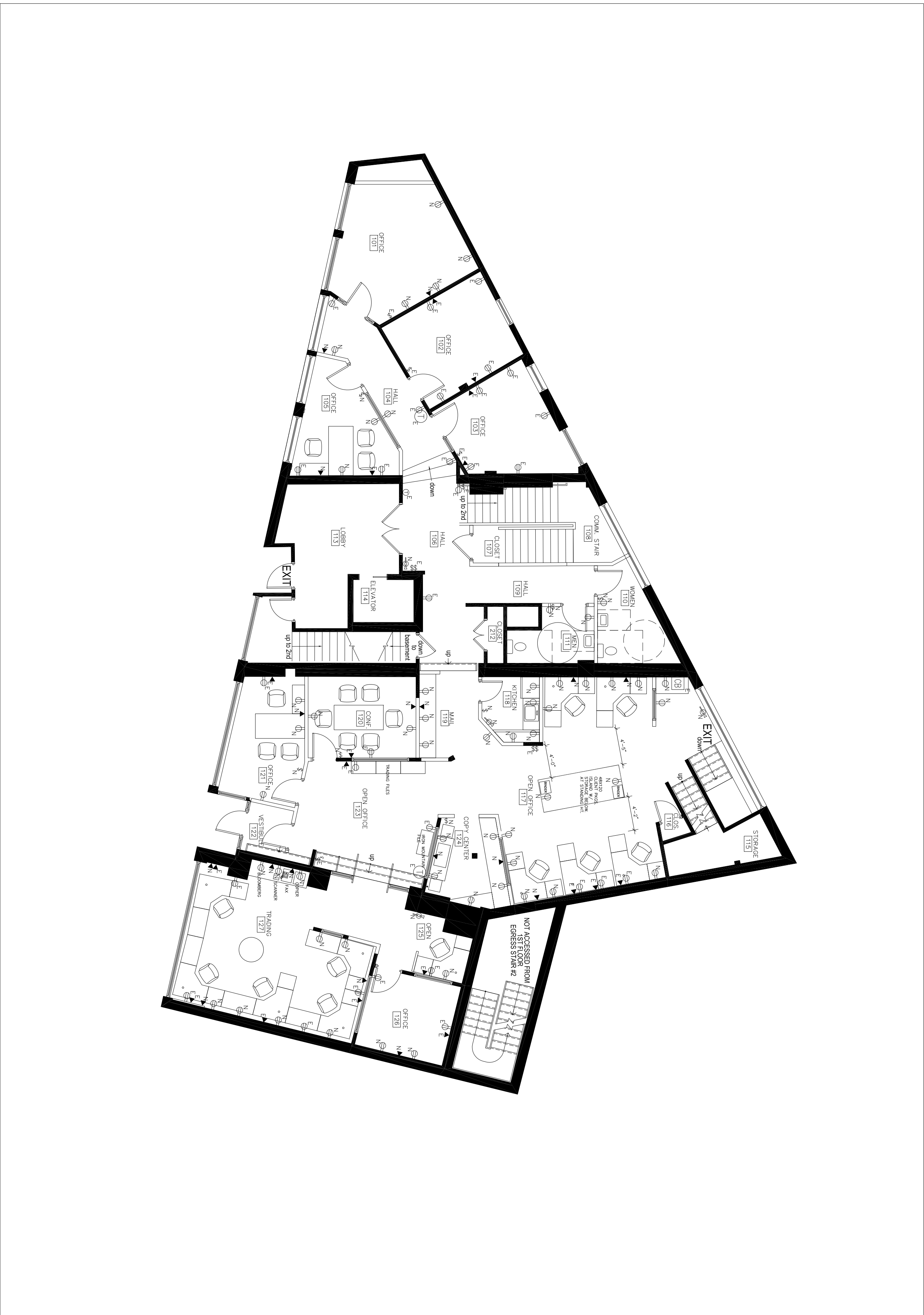


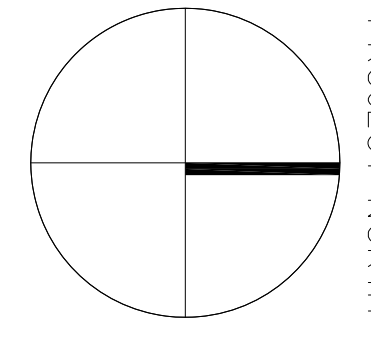
OUTLET LEGEND	
⊖ E N	EXISTING OUTLET TO REMAIN NEW OUTLET
⚡ E N	EXISTING SWITCH TO REMAIN NEW SWITCH
▲ E N	EXISTING TEL/DATA TO REMAIN NEW TEL/DATA
Ⓢ E N	EXISTING THERMOSTAT TO REMAIN EXISTING CIRCUIT BREAKER TO REMAIN NEW FIRE EXTINGUISHER
FURNITURE NOTES	
<ol style="list-style-type: none"> FURNITURE, FIXTURES AND EQUIPMENT SHOWN FOR REFERENCE ONLY. CONTRACTOR SHALL MAKE EVERY EFFORT TO COORDINATE THESE ELEMENTS WITH THE CONSTRUCTION TO THE GREATEST EXTENT POSSIBLE. FURNITURE VENDOR TO VERIFY AND COORDINATE NEW INTENT ONLY. FILE CABINETS TO BE COORDINATED AND RELOCATED BY WORKER. GENERAL CONTRACTOR TO COORDINATE EXACT LOCATION OF OUTLETS AND WHIPS WITH FURNITURE VENDOR. REFER TO MEP ENGINEERING DRAWINGS FOR ADDITIONAL INFORMATION. 	

B1 NOTES & LEGEND




A1 1/8" = 1'-0"
1ST FLOOR FURNITURE-OUTLET-EQUIPMENT PLAN

NO	DATE	REVISIONS



RM DAVIS
24 CITY CENTER
PORTLAND, ME

 <small>165 SPRINGFIELD RD SCARBOROUGH, ME P: (207) 408-9500</small>		TITLE 1ST.FLOOR FURN.-OUTLET- EQUIP._PLAN	SCALE 1/8" = 1'-0"
DATE	DRAWN BY	CHECKED BY	
1/11/16	JAT	JC	

A921

14-701