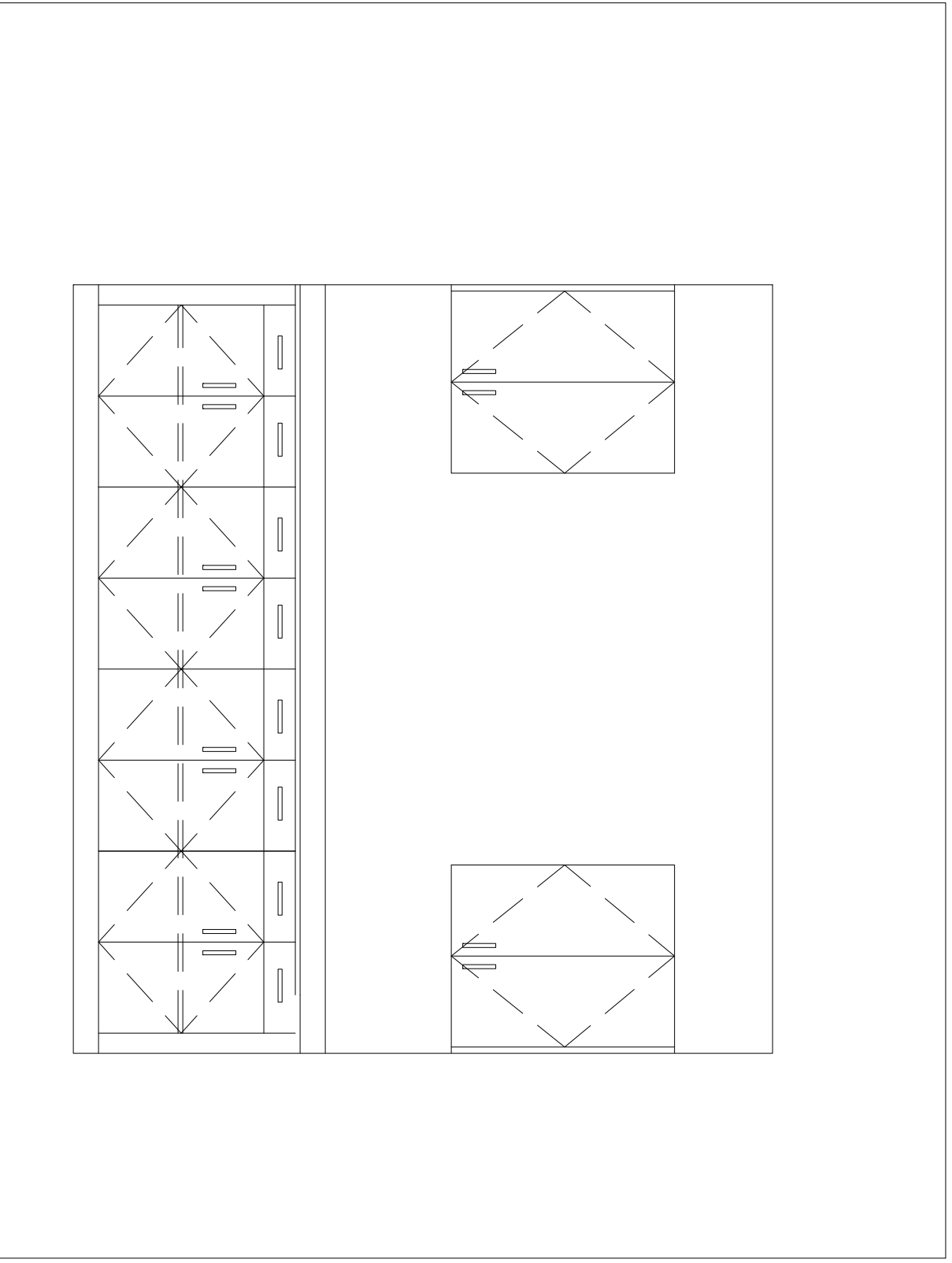
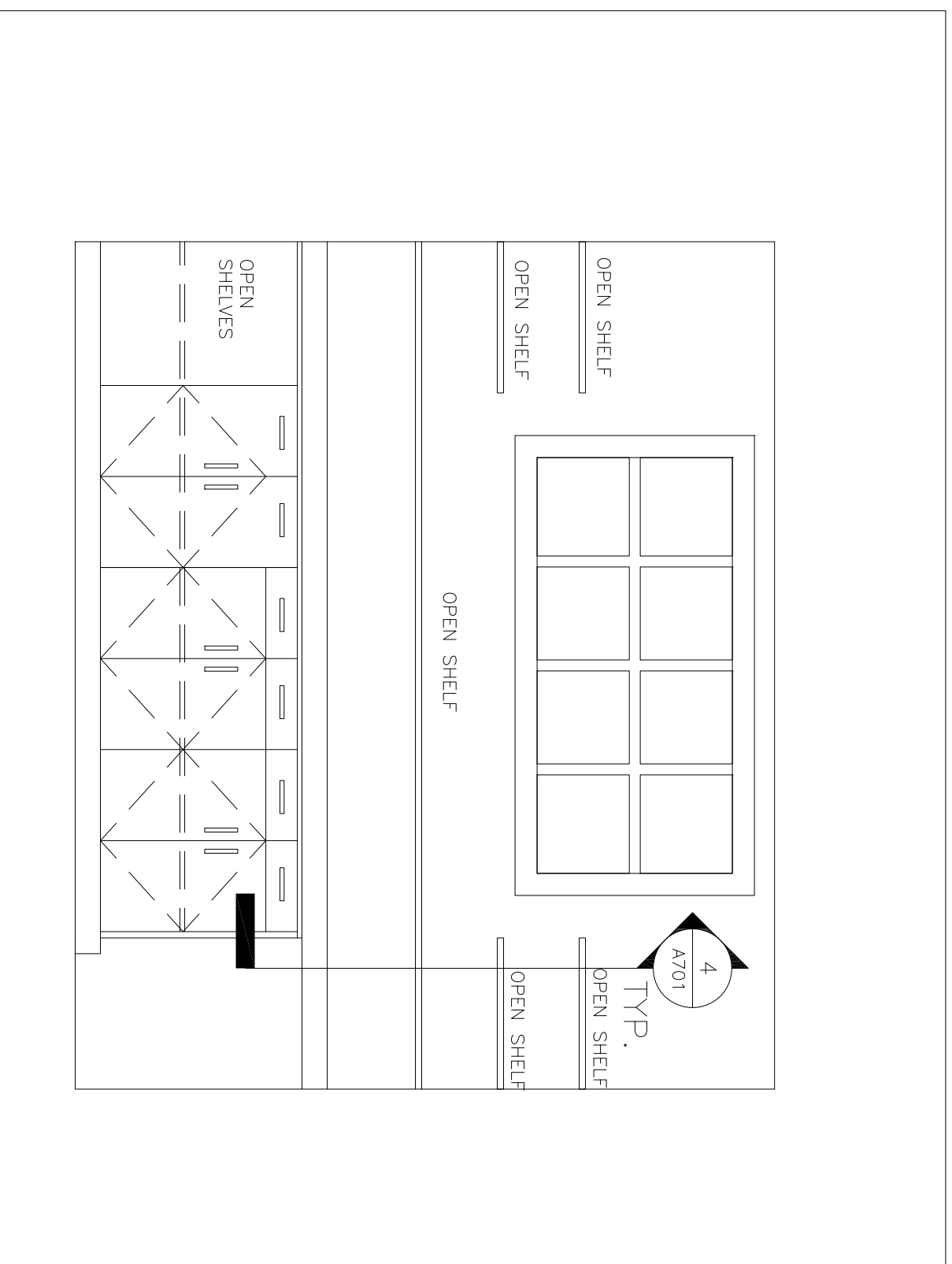


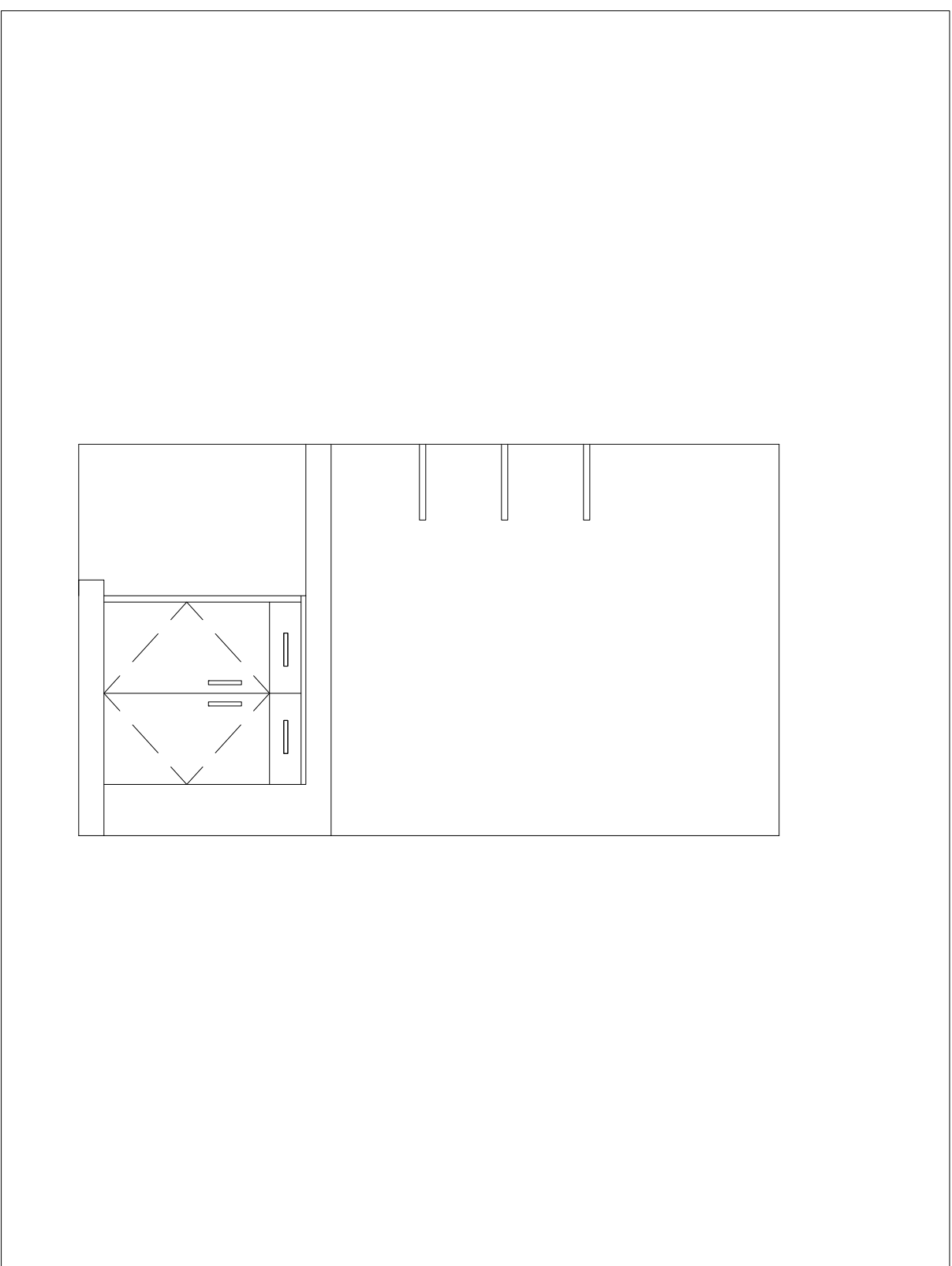
1 MAIL AREA 119
1/2"=1'-0"



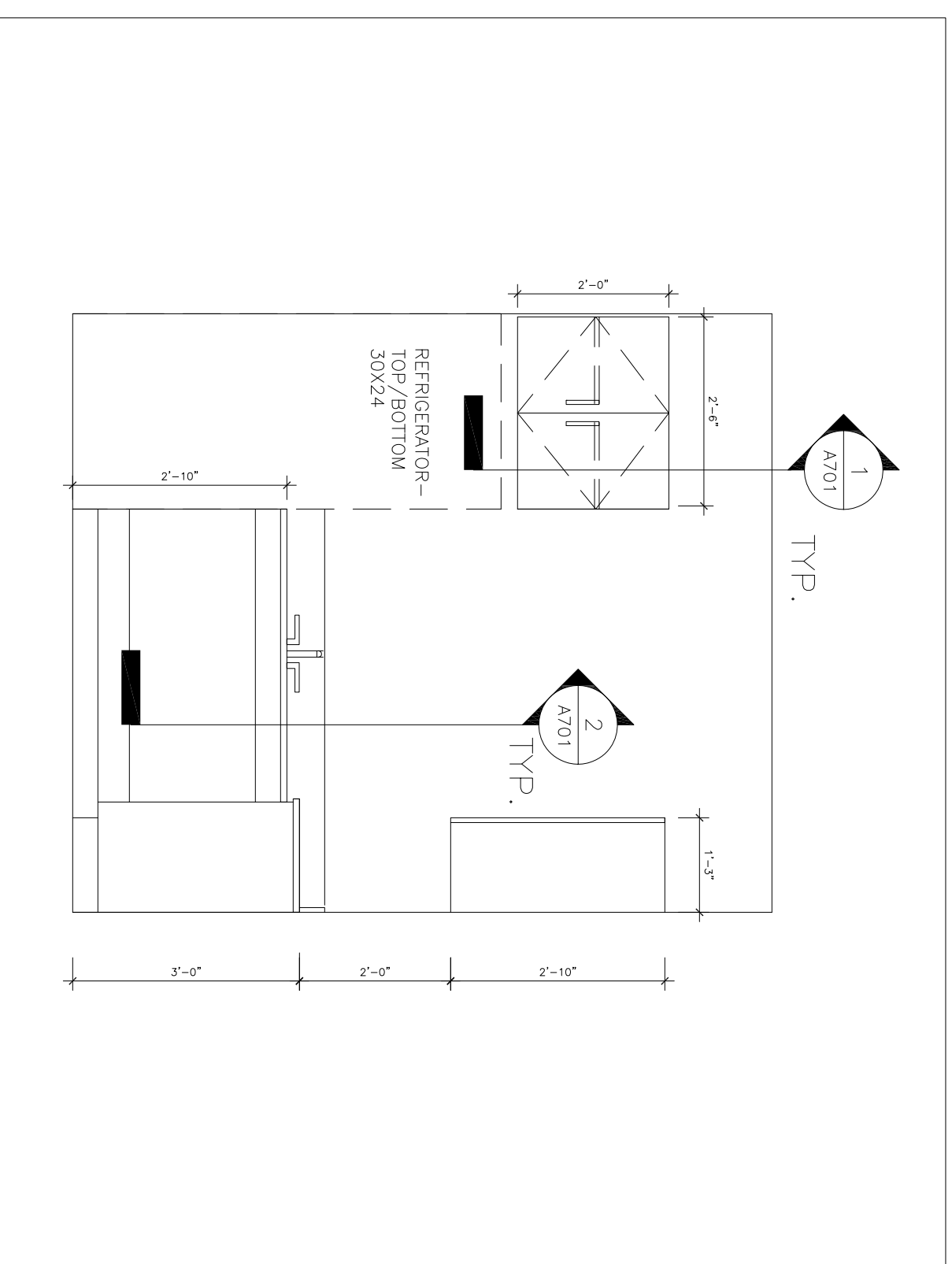
1 COPY CENTER 124
1/2"=1'-0"



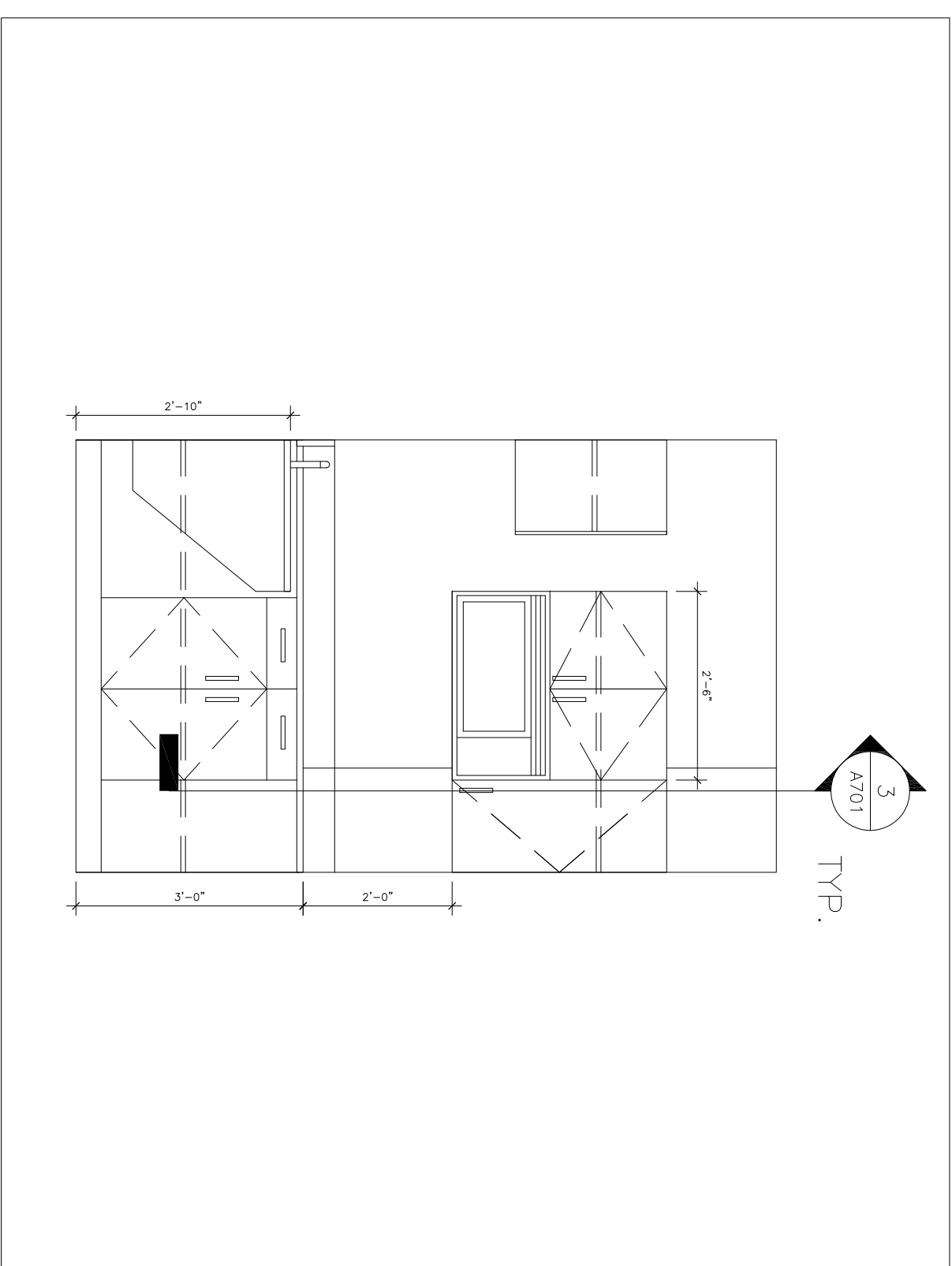
2 COPY CENTER 124
1/2"=1'-0"



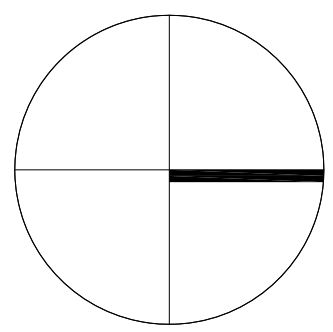
1 KITCHEN 118
1/2"=1'-0"



2 KITCHEN 118
1/2"=1'-0"



NO.	DATE	REVISIONS



PROJECT NORTH

RM DAVIS
24 CITY CENTER
PORTLAND, ME

TITLE
1ST.FLOOR
INTERIOR
ELEVATIONS

SCALE
AS_NOTED



DATE 1/11/16
DRAWN BY JAT
CHECKED BY JC

A201

14-701