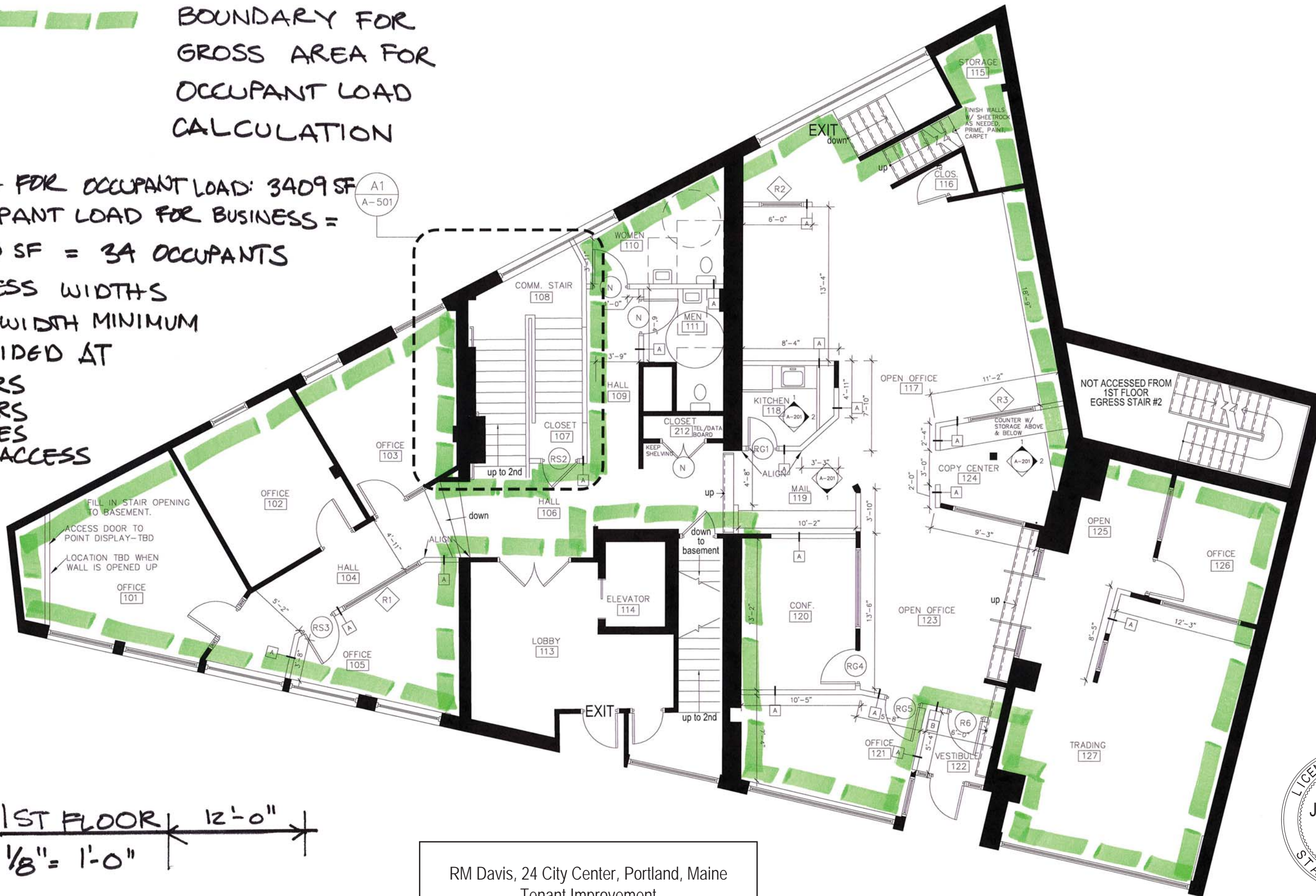


BOUNDARY FOR
GROSS AREA FOR
OCCUPANT LOAD
CALCULATION

AREA FOR OCCUPANT LOAD: 3409 SF
OCCUPANT LOAD FOR BUSINESS =
1/100 SF = 34 OCCUPANTS

EGRESS WIDTHS
36" WIDTH MINIMUM
PROVIDED AT
DOORS
STAIRS
AISLES
EXIT ACCESS



1ST FLOOR 12'-0"
1/8" = 1'-0"

RM Davis, 24 City Center, Portland, Maine
Tenant Improvement
1st floor code and life safety

