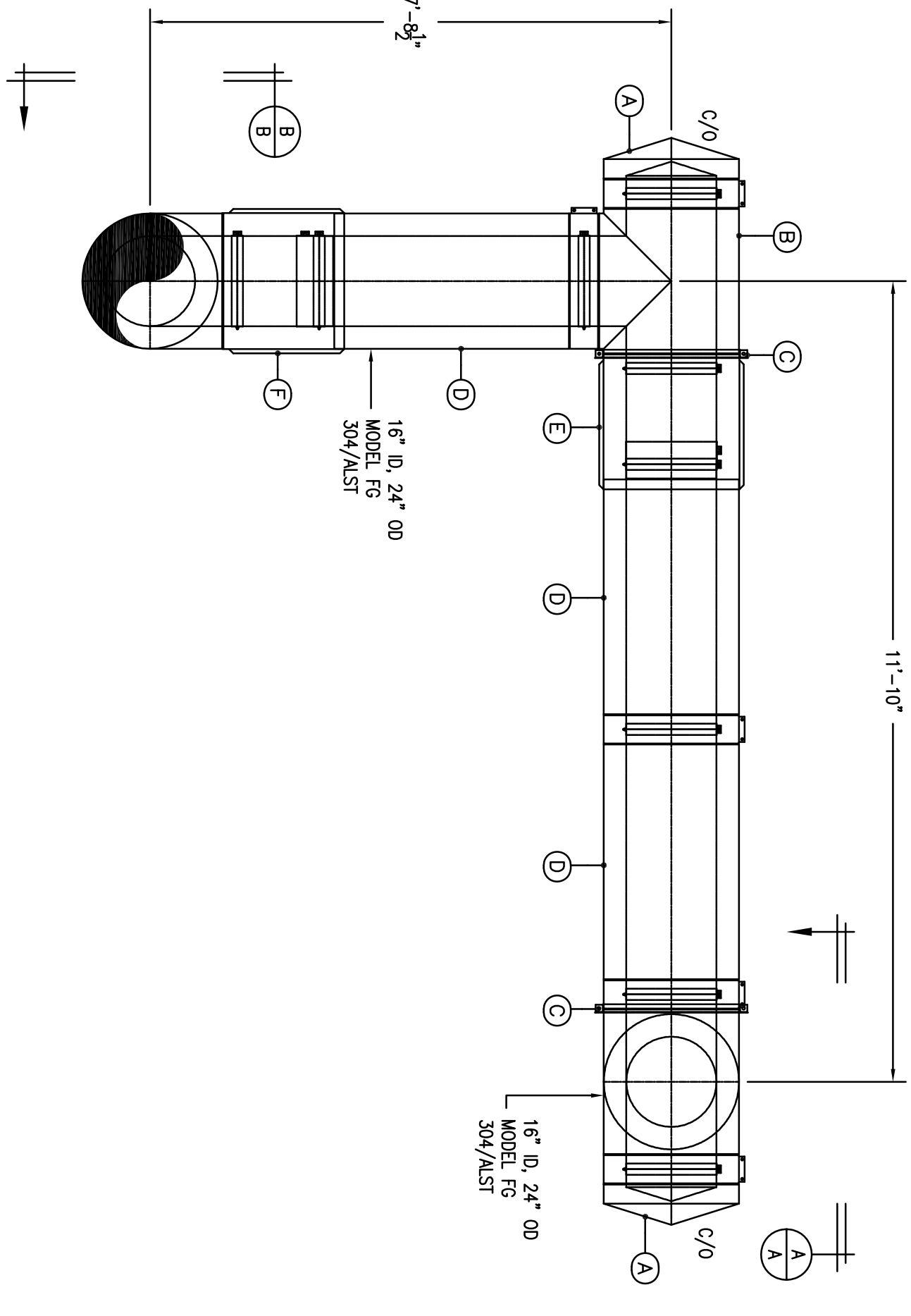


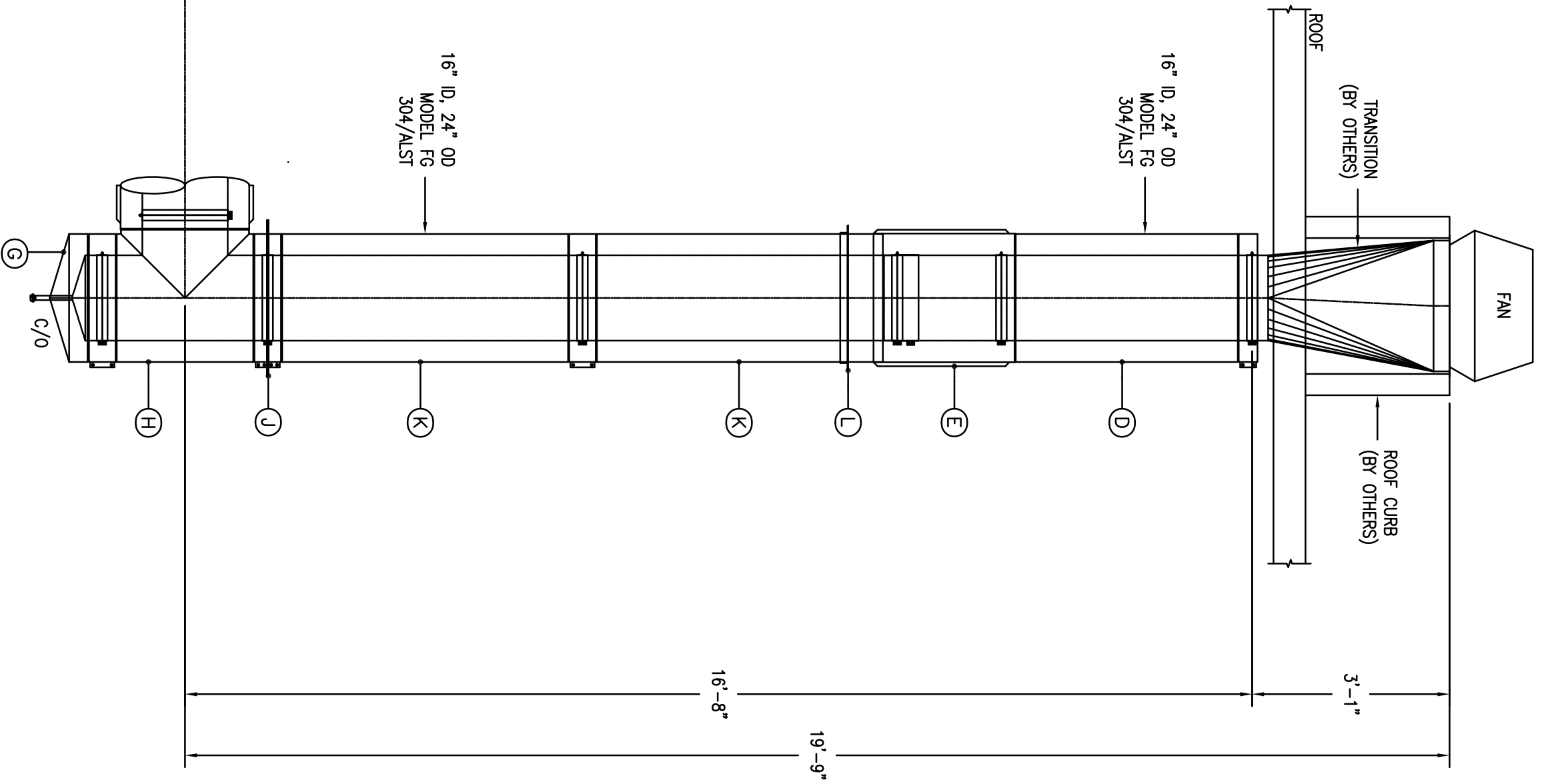
ITEM QTY	PART NO.	DESCRIPTION	MATERIAL
A 2	FG-EC-16A	FG End Cap ø16"	304/ALST
B 2	FG-GT-16A	FG Grease Tee (Dam In Main) ø16"	304/ALST
C 2	FG-HR-16H	FG Half Angle Ring ø16"	CBST
D 4	FG-47S-16A	FG 47" Straight ø16"	304/ALST
E 2	FG-29VS-16A	FG 29" Variable Straight ø16"	304/ALST
F 1	FG-18VS-16A	FG 18" Variable Straight ø16"	304/ALST
G 1	FG-DTC-16A	FG Drain Tee Cap ø16"	304/ALST
H 1	FG-90T-16A	FG 90° Tee ø16"	304/ALST
J 1	FG-SP-16U	FG Support Plate ø16"	CBST/ALST
K 2	FG-59S-16A	FG 59" Straight ø16"	304/ALST
L 1	FG-FR-16H	FG Full Angle Ring ø16"	CBST
M 16	FG-IB-16C	FG ø16" Inner Band	304/304
N 7	FG-OB-24G	FG ø24" Outer Band	ALST
P 2	FG-HB-24G	FG ø24" Half Band	ALST
Q 2	FG-SR-16G	FG Seal Ring ø16"	ALST
R 16	IS-16	4" x 126" Insulation Strip	FG
S 7	S2000	High Temp Sedaunt	
T 1	HARDWARE	Box of Nuts, Bolts, Etc...	

Parts List

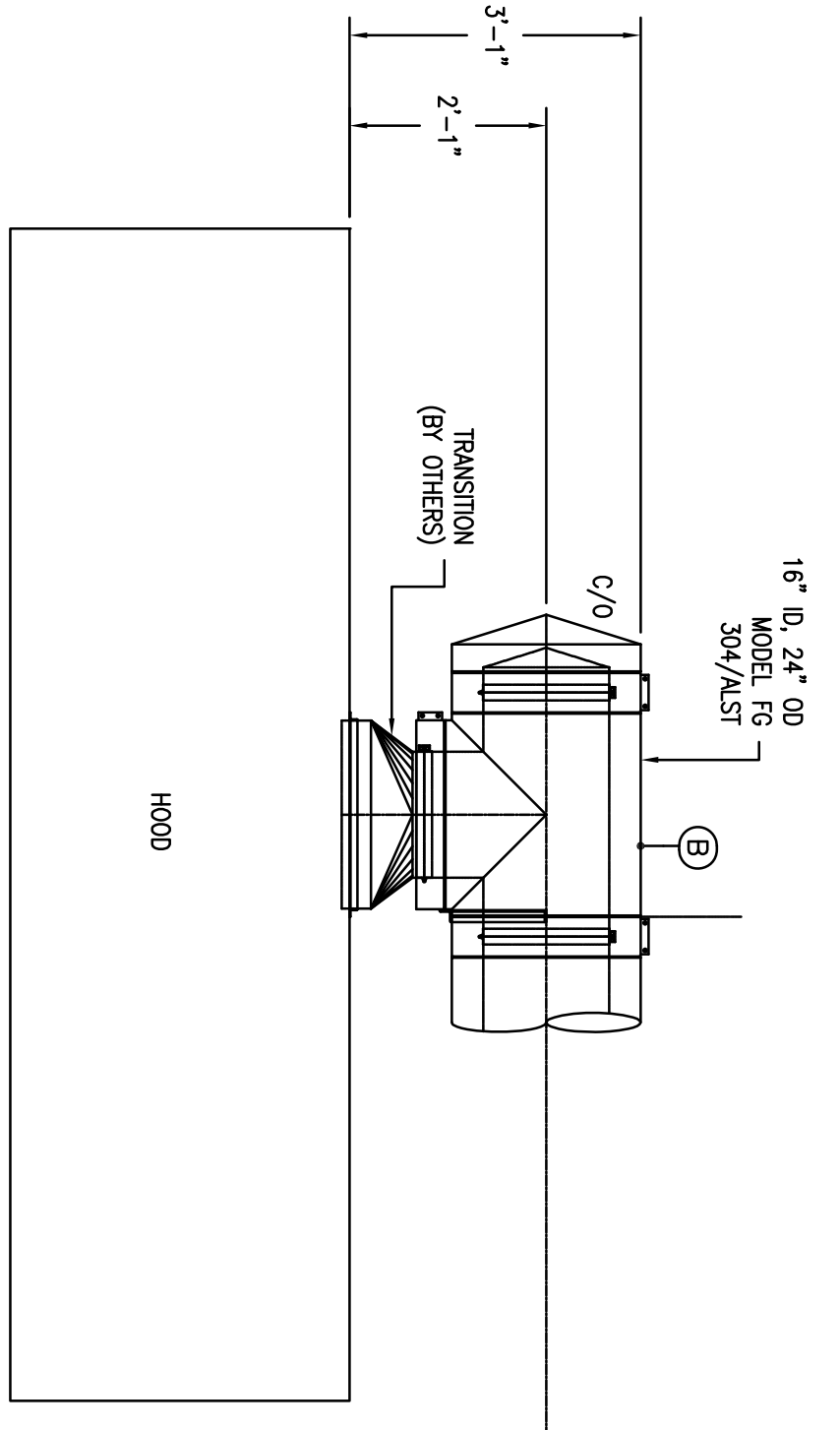
- MODEL FG NOTES:**
1. ALL DIMENSIONS TO BE VERIFIED BY CONTRACTOR BEFORE FABRICATION. PROJECT FOR FABRICATION.
 2. INNER SHELL MATERIAL TO BE 20 GA.
 3. OUTER SHELL MATERIAL TO BE 22 GA.
 4. ALUMINIZED STEEL.
 5. DIAMETERS .38" AND LARGER ON STRAIGHT SECTIONS TO BE 18 GA. MATERIAL FOR FITTINGS, OUTER SHELL DIAMETERS .25" AND LARGER TO BE 18 GA.
 6. INNER SHELL TO BE INSULATED WITH 4" THICK 11 LB/50 INCH INSULATION. REFER TO SOKELER GENERAL MODEL INSTALLATION INSTRUCTIONS FOR CORRECT INSTALLATION METHODS.



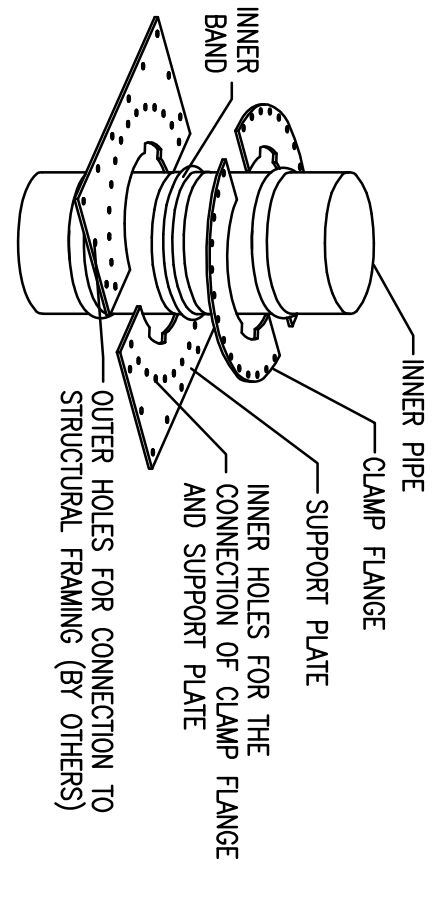
PLAN VIEW
SCALE: 1/2"=1'-0"



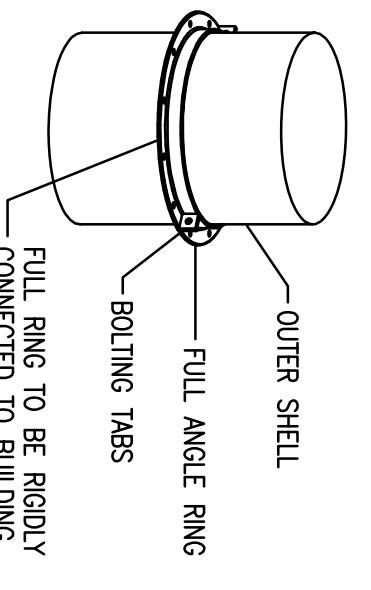
SECTION
SCALE: 1/2"=1'-0"



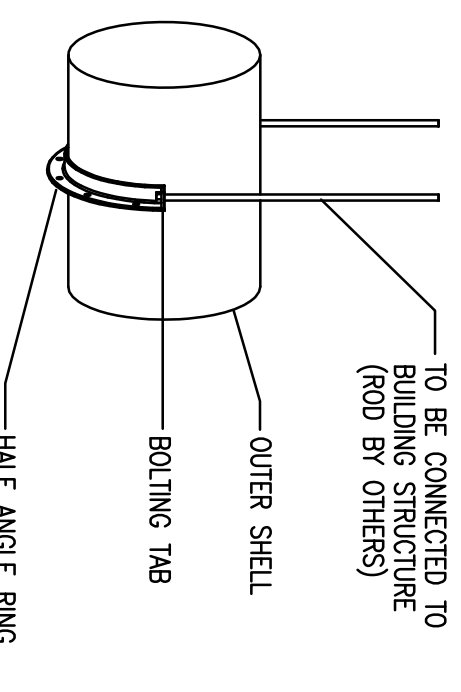
SECTION
SCALE: 1/2"=1'-0"



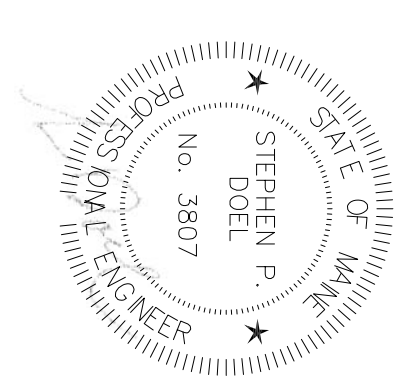
SUPPORT PLATE DETAIL
NOTE: NOT TO BE USED AS A LIFTING DEVICE FOR INSTALLATION
NOT TO SCALE



FULL RING DETAIL
NOTE: DOES NOT ACT AS A SUPPORT IN VERTICAL APPLICATIONS.
NOTE: NOT TO BE USED AS A LIFTING DEVICE FOR INSTALLATION
NOT TO SCALE



HALF RING DETAIL
NOTE: HALF RING WILL HELP SUPPORT WEIGHT BUT WILL NOT PREVENT LATERAL MOVEMENT DUE TO THERMAL EXPANSION.
NOT TO SCALE



Revisions
1. For Permits.

Sur Lie Restaurant
11 Free Street
Portland, ME

BENNETT ENGINEERING
MECHANICAL • ELECTRICAL
(207) 865-9475

Job No.: 3639
Date: 9/9/14
Scale: 1/8" = 1'-0" or A.N.
Drawn by: SF Doel
Checked by: SF Doel
Drawing Title: HYAC Details

Atlantic Comfort Systems, Inc.
Mechanical Contractors • 207-284-4390
882 Hill Street, Biddeford, ME 04005
www.atlanticcomfort.com

M.2

