

KITCHEN HOOD PERFORMANCE SCHEDULE

TAG	GRIND	CHT	GR	QTY	SIZE	FFM	CHT	GR	QTY	SIZE	FFM	FILTER HEIGHT	FILTER QTY & SIZE	FILTER FACE VEL (FFM)	WEIGHT (LBS)	FOURTH AIR UNIT	MARBLE AIR UNIT	SERVICE	MODEL
KH1	14x6x24	3000	0.50	1	36x6	-	2400	0.75	1	24x4	-	-	-	-	499	EH	TLA-1	KITCHEN EQUIP	200B

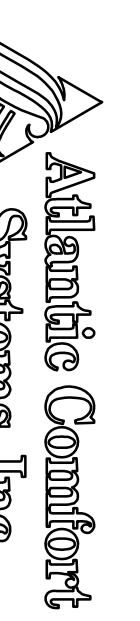
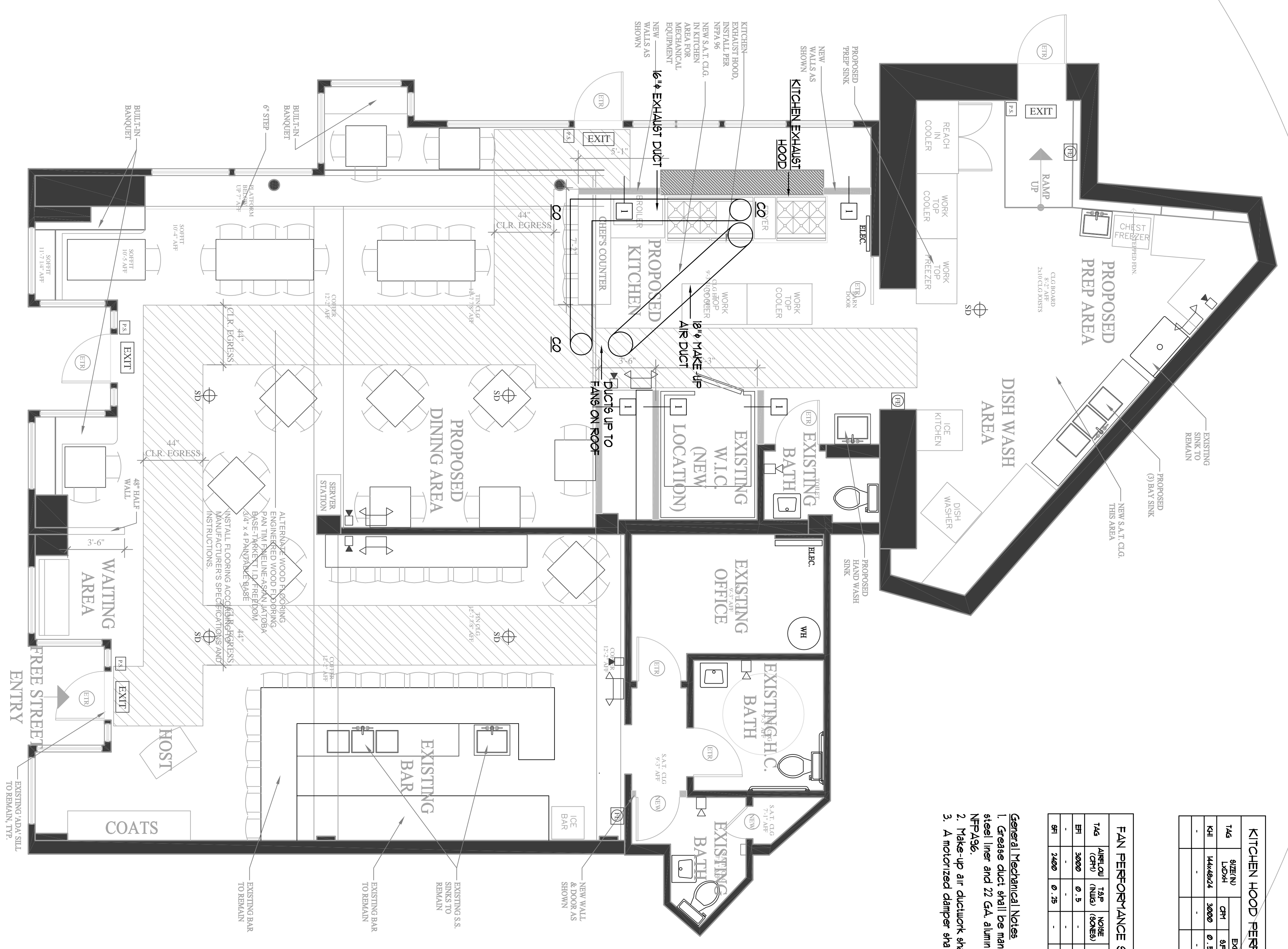
BASIS OF DESIGN - HOOD/FAN

HOOD NOTES
1. Provide "KILL" with a Pyrochem fire suppression system.

FAN PERFORMANCE SCHEDULE

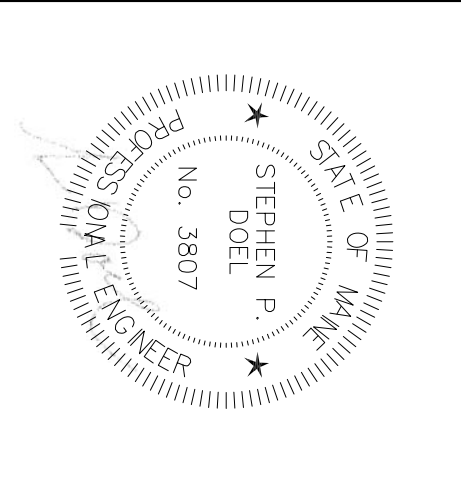
TAG	APPROX (CHT)	7.5" TAP (INCH)	NOISE (SOBES)	FFM	DRIVE	HP	BHP	VOLTS	APPS	V/FREQ	SERVICE	MANUFACTURER	MODEL
EH	3000	0.5	-	146	BELT	1.0	-	6.5	250/60	-	CH-1	ROCKTOR LP	HEC04-B
EH	2400	0.75	-	840	BELT	1/2	-	6.3	120/60	-	HOOD FAN	ROCKTOR	HR7T

- General Mechanical Notes**
- Grease duct shall be manufactured by Atlantic Air Systems Model FG, double wall insulated construction with 20 GA. Type 304 stainless steel liner and 22 GA. aluminum steel outer shell. Insulation shall be 4" thick fiberglass. 11 lb/ft² density. Cleanouts shall be provided per NFPA-96.
 - Make-up air ductwork shall be insulated with 3" thick fiberglass duct insulation with FSK Owens-Corning or equal.
 - A motorized damper shall be provided at the supply fan, interlocked to open with the fan operation.



**Atlantic Comfort
Systems, Inc.**
Mechanical Contractor • 207-884-4390
882 Hill Street, Biddeford, ME 04005
www.atlanticcomfortsystems.com

M.1



Revisions
1. For Permit.

Sur Lie Restaurant

11 Free Street
Portland, ME

**BENNETT
ENGINEERING**
MECHANICAL • ELECTRICAL
(207) 865-9475

Job No.: 3639
Date: 9/14
Scale: 1/8" = 1'-0" or A.N.
Drawn By: SF Doel
Checked by: SF Doel
Drawing Title:
HYAC Plan