

ARCHITECT:

MARK MUELLER
ARCHITECTS
PORTLAND, ME

CONTRACTOR:

LANDMARC
CONSTRUCTION
PORTLAND, ME

LEGEND:

- IN PIPE RISER UP
- DN PIPE RISER DOWN
- STEEL PIPE (NEW)
- STEEL PIPE (EXISTING)
- ▲ WET SYSTEM RISER
- ◆ HYDRAULIC CALC. POINT
- [16-0] PIPE ELEVATION A.F.F.

DESIGN NOTES:

ALL PIPING 1 1/2" AND LARGER TO BE SCHEDULE 10 STEEL W/ GROOVED FITTING. ALL PIPING 1 1/4" AND SMALLER TO BE SCHEDULE 40 STEEL WITH THREADED CONNECTION. LOCATION, SPACING, AND USE OF SPRINKLERS AND HANGERS SHALL BE IN ACCORDANCE WITH NFPA 13 2010 ed. ALL ELECTRICAL WORK TO BE DONE BY OTHERS. DIMENSIONS AND LOCATIONS GIVEN FOR SPRINKLERS ARE TO FIELD CONDITIONS. OWNER TO PROVIDE SUFFICIENT HEAT TO PREVENT FREEZING IN WATER FILLED SPRINKLER PIPE AND EQUIPMENT. OTHER TRADES TO COORDINATE THEIR WORK WITH SPRINKLER SPRINKLER HEADS ARE TO BE QUICK RESPONSE UNO. OWNER IS RESPONSIBLE FOR MAINTAINING THE SPRINKLER SYSTEMS IN ACCORDANCE WITH THE CURRENT EDITION OF NFPA 25. CONTRACTOR SHALL PROVIDE REMOVAL OF ALL DEBRIS AND WASTE FROM THE PROJECT AND/OR ALL APPLICABLE FEDERAL, STATE, AND LOCAL LAWS, CODES AND ORDINANCES.

* OR APPROVED EQUAL

TOTAL HEADS ON SHEET: 33

SCALE: 1 1/4" = 1'-0"

SCALE: 1/4" = 1'-0"

DATE: AUGUST 8, 2014

DESIGNER: JEREMY A. FOSS
MAINE RMS #808
NICET LEVEL III CERT. #128801
CHECKED BY: E. POULIN (RMS# 815)
NICET LEVEL IV CERT. # 108534

LOCATION:

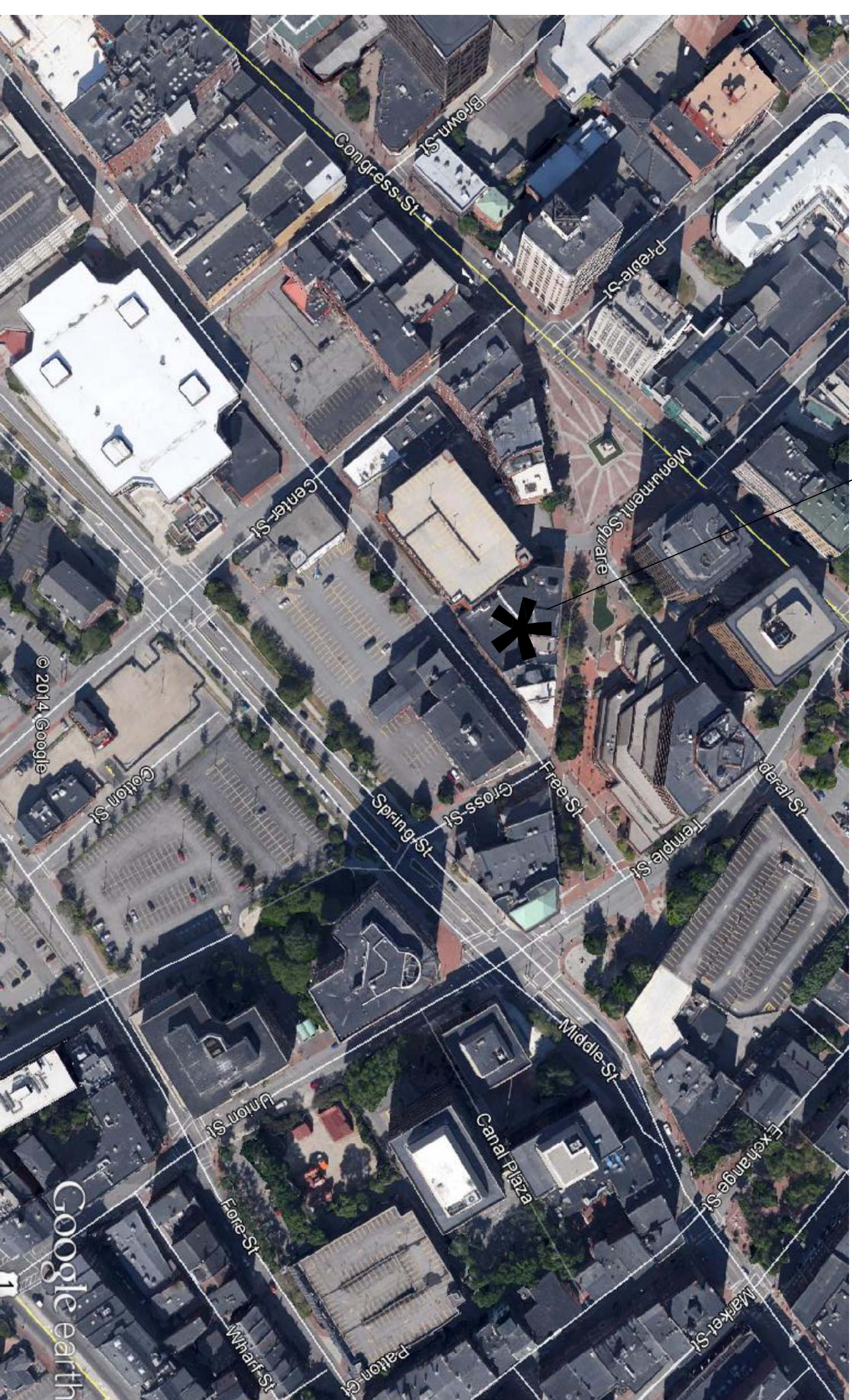
11 FREE STREET
PORTLAND, ME

DRAWING TITLE:

SUR LIE
RESTAURANT
(1ST FLOOR)
FIRE PROTECTION PLAN
(NFPA 13 2010 ed.)

DRAWING NO.:

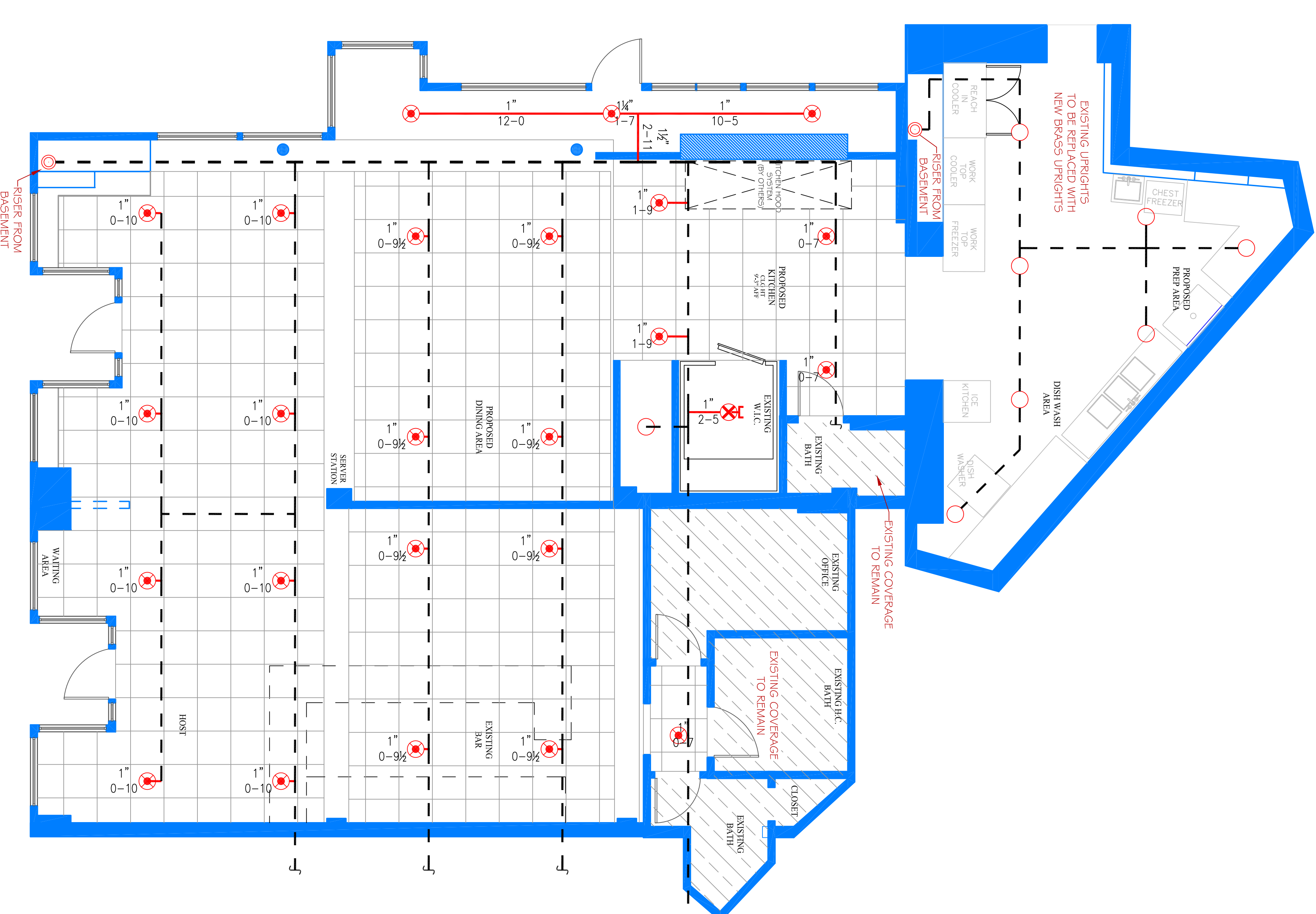
FP-1.1



PROJECT SITE:

SITE PLAN

SCALE: N.T.S.



PARTIAL FIRST FLOOR PLAN

SCALE: 1/4" = 1'-0"
PROTECTED AREA: 2,620 SQ. FT.

SPRINKLER HEAD LEGEND:

GLOBE*
MODEL GL5635
1 / 155"
K-5.6
1" DRY BARREL SEMI RECESSED
WHITE PENDENT
(130 SQ. FT. SPACING - ORD.)

GLOBE*
MODEL GL5615
8 / 155"
K-5.6
1/2" BRASS UPRIGHT
(225 SQ. FT. SPACING - LIGHT)
(130 SQ. FT. SPACING - ORD.)

GLOBE*
MODEL GL5601
24 / 155"
K-5.6
1/2" SEMI RECESSED WHITE
PENDENT
(225 SQ. FT. SPACING - LIGHT)
(130 SQ. FT. SPACING - ORD.)

THIS DRAWING HAS BEEN REVIEWED FOR GENERAL COMPLIANCE WITH THE 2010 ed. AUTOMATIC SPRINKLER SYSTEMS DOCUMENT SHALL BE MADE A CERTIFIED DESIGN PROFESSIONAL. REVIEW COMPLETED BY: JEREMY A. FOSS MAINE RMS #808 NICET LEVEL III CERT. #128801 CERTIFICATION #128801 SIGNED: [Signature]