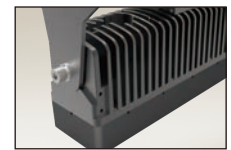
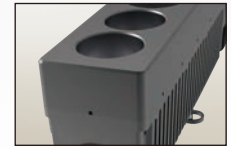
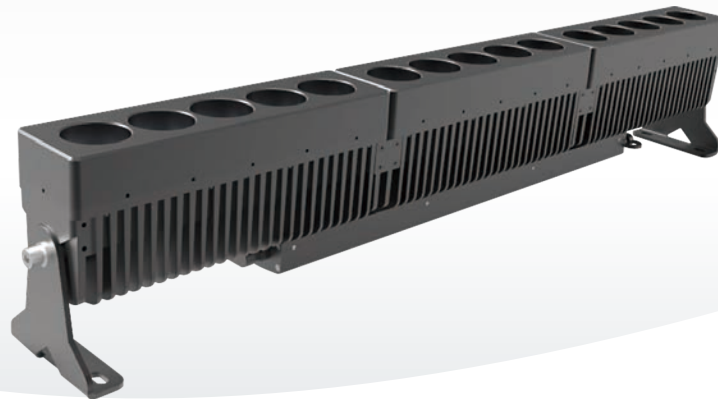
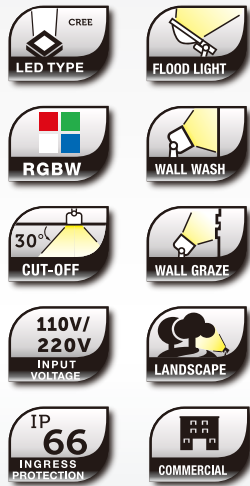


TransFormers Series TF3C



FLOODLIGHT • WALL WASHER
WALL GRAZER

TF3C-L0852-0015XHM-00

Features:

- Elegant high power outdoor RGBW LED floodlight for architectural, monument, bridges and landscape lighting applications.
- High power Cree in whites and RGBW. Output power up to 120W.
- Brightness control of 256 and 10 bits contrast control level for smooth and consistent color change effect.
- Precision die-cast aluminum housing with efficient heat dissipation fins and anti-glare cover on deep-seated light emitters.
- Stainless steel mounting frame and tilt adjustable up to 180°.
- Customizable housing color and selection of other models in different power configurations.
- AC110V ~ 220V input; DMX control; Ingress Protection IP66.

Technical Specification:

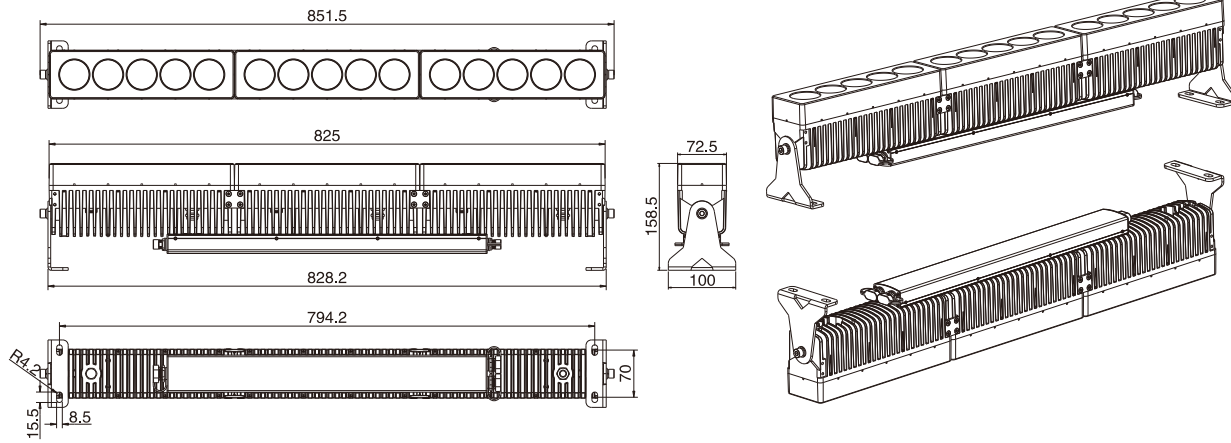
LED Type	CREE XM-L / XM-L2 (4 IN 1)
LED Quantity	15 (8W 700mA)
Power Rating	120W
Luminous Flux	5250 lm
Luminous Efficacy	44 lm/W
Contrast Level	10bit*4 (1024*1024*1024*1024)
Brightness Level	256
Input Voltage	AC110V~220V
Operating Temperature	-40°C~50°C
Operating Humidity	10%~95%RH
Material(Housing)	Powder coated die cast aluminum with clear tempered glass diffuser on steel frame
Cable Interconnect	Signal cable: PVC cable with waterproof connectors ≥ 500mm; Power cable: Neoprene ≥ 500mm
Dimension (without mounting bracket)	851.5*100*158.5 mm
Weight	13kg
Pixel Quantity	2
Control Gear	DMX
Ingress Protection	IP 66
Life Span	≥ 50000 hours
Application	Outdoor

Colour	Standard Specification
5000K	8700 lm
4000K	7500 lm
3000K	6375 lm
2700K	5790 lm
2400K	-
2200K	-
1700K	-
Blue	-
Amber	-
RGB	-
RGB + White	5250 lm

LED Type	Beam Angle
CREE XP-E2	-
LUMILEDS REBEL	-
CREE XM-L / XM-L2	10° / 15° / 20° / 25° / 30° / 60° / 10°*40° / 10°*70°

Dimension Details:

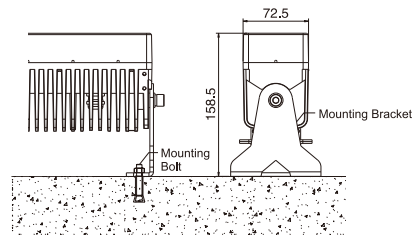
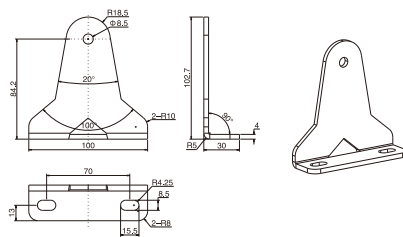
unit: mm



Installation Details:

Mounting Bracket: 1PCS

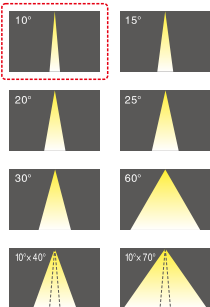
Rotation Angle Curve:



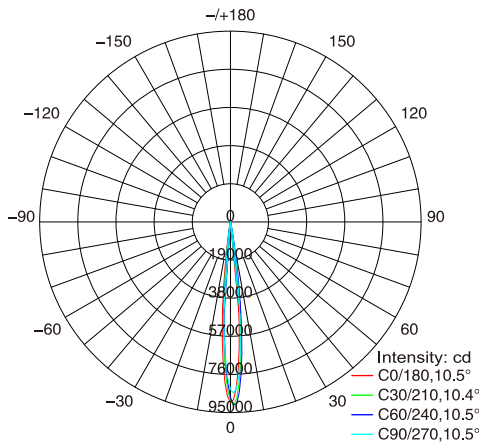
Photometry:

Lamp Source: CREE XM-L / XM-L2
 Beam Angle: 11°
 Field Angle: 18°
 Cut-off Angle: 30°

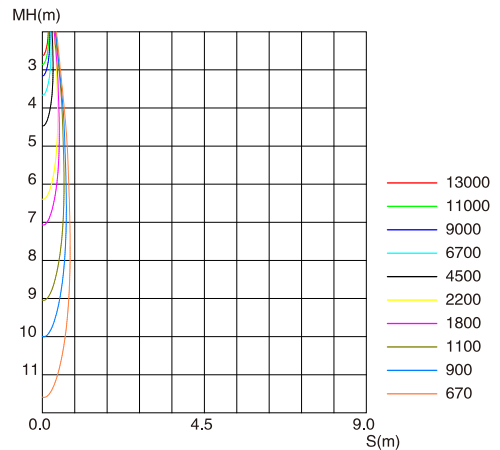
Beam Angle Curve:



Candela Distribution Curve

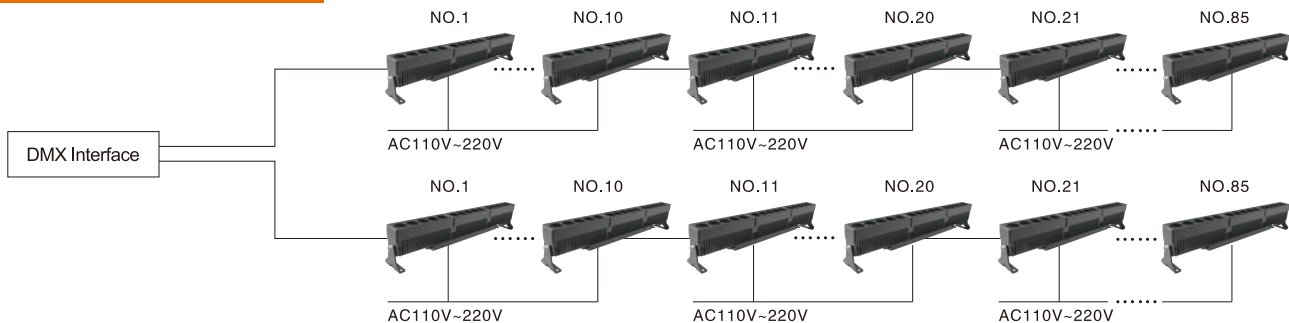


Isolux Curve (lx)



Note: Test data is based on TF3C-L0852-0015XHX-00 only.

System Schematic Diagram:



(Illustration: Each light fixture represents two pixel)

StrongLED®



STRONGLIGHTING SYSTEM GROUP
 STRONG LED LIGHTING SYSTEMS (CAYMAN) CO., LTD.
 SHANGHAI GRAND CANYON LED LIGHTING SYSTEMS CO., LTD.
 GRAND CANYON LED LIGHTING SYSTEMS (SUZHOU) CO., LTD.
 NO. 2888, Linhu Avenue, Foho Economic Development Zone,
 Wujiang City, Jiangsu Province, China 215211
 +86-512-8286 8008 +86-512-8286 8001
 global@strongled.com

Copyright © 2010 – 2014 Strong LED Lighting Systems (Cayman) Co., Ltd. All rights reserved. City Life, i-City Vision, City Pearl, StrongCont, StrongPlayer, StrongPower, Versalink, FT-Link, FT-MASTER, J-Link, J-net, Mini-MASTER are either registered trademarks or trademarks of Strong LED Lighting Systems (Cayman) Co., Ltd. in China and / or other countries. All other brands or product names are trademarks or registered trademarks of their respective owners. All values are typical values measured under laboratory conditions. Due to continuous improvements and innovations, specifications may change without prior notice.

www.strongled.com

TRF-16-04-15-V1