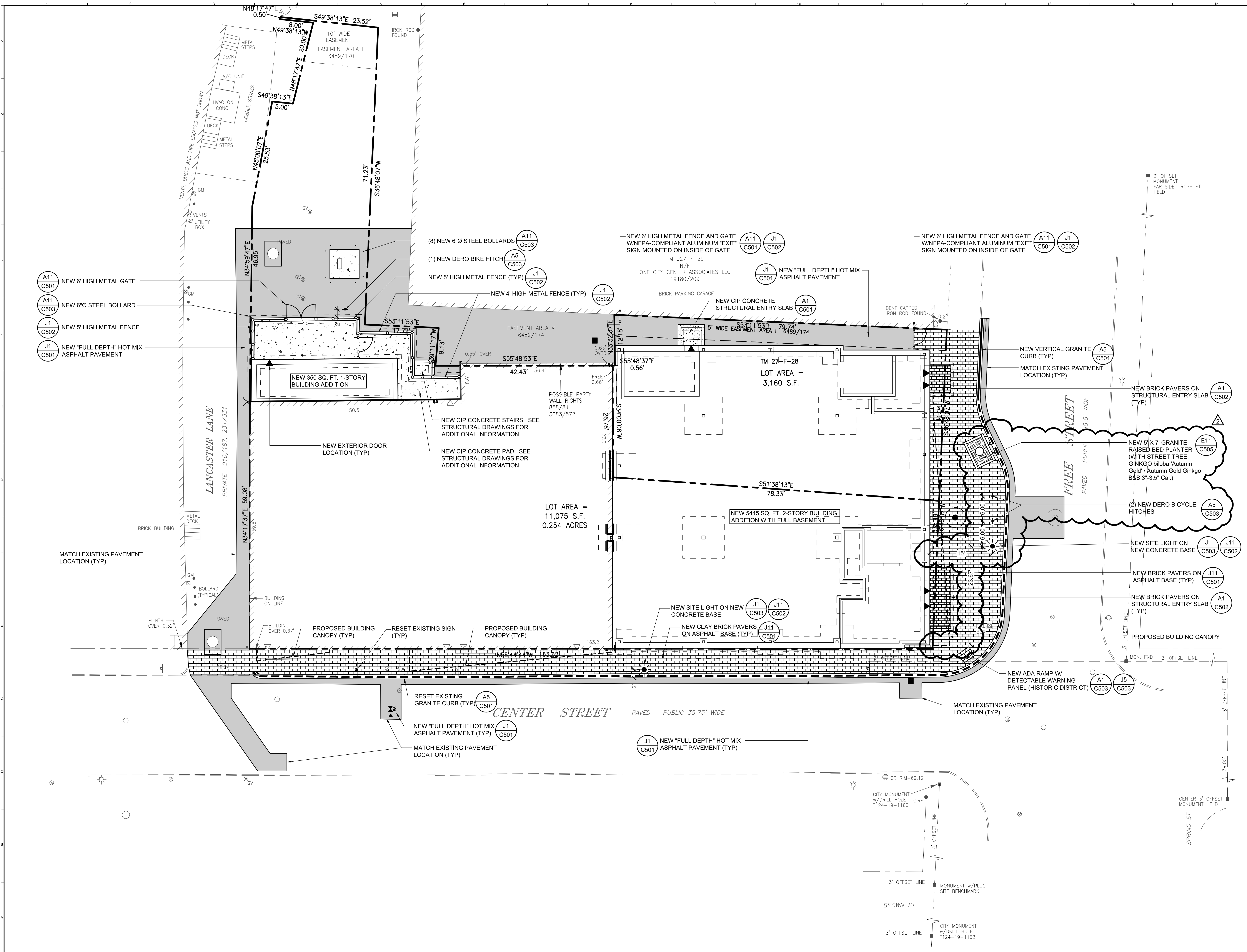


Jun 21, 2016 - 12:40pm  
 T:\02 Projects - Name\4001-4004\07110 Asylum Expansion 4 Renovation 5D-CA2 Design\Drawings\Site\407110-SP101.dwg JobyRichards



- LAYOUT NOTES:**
- SEE NOTE L1 - L3 ON SHEET C - 001 FOR ADDITIONAL LAYOUT INFORMATION.
  - SITE INFORMATION BASED ON A SURVEY BY OWEN HASKELL INC.
  - COORDINATE ALL SIDEWALK LOCATIONS WITH ARCH. AND STRUCTURAL DRAWINGS TO VERIFY NEW EXTERIOR DOOR LOCATIONS. FIELD ADJUST AS REQUIRED.
  - REFER TO STRUCTURAL SHEETS FOR NEW FOUNDATION LAYOUT. COORDINATE LAYOUT WITH FOUNDATION CONTRACTOR.
  - ALL CONSTRUCTION WITHIN THE STREET RIGHT OF WAY SHALL MEET CITY OF PORTLAND TECHNICAL MANUAL STANDARDS.

EXISTING	LEGEND	PROPOSED
	STREET LIGHTING	
	BOLLARD	
	WATER SHUTOFF / GATE VALVE	
	PARKING METER	
	GAS VALVE	
	TRANSFORMER PAD	
	MANHOLE	
	SEWER MANHOLE	
	CATCH BASIN	
	FIRE HYDRANT	
	SIGN	
	FENCING	
	GUARD RAIL	
	PAVEMENT	
	SIDEWALK	
	GRANITE CURB	
	PROPERTY SETBACK	
	PROPERTY LINE	
	ABUTTING PROPERTY LINE	

REV.	DESCRIPTION	DATE
ADDENDUM #2		21 JUNE 2016
ADDENDUM #1		13 JUNE 2016
0	ISSUED FOR BID	6 JUNE 2016

MOBILE

**WBRC**  
 ARCHITECTS • ENGINEERS  
 WWW.WBRCAE.COM  
 BANGOR, MAINE 207-947-4811  
 PORTLAND, MAINE 207-629-4811  
 SARASOTA, FLORIDA 941-373-1883

PROJECT	
PORTLAND, MAINE	
SITE LAYOUT AND MATERIALS PLAN	
SHEET TITLE:	
WBRC CAD FILE:	407110-SP101.DWG
PROJECT No:	4071.10
SCALE:	1"=10'
PM:	JRB
DRAWN BY:	JWB
AE OF RECORD:	JSK
<b>CP101</b>	