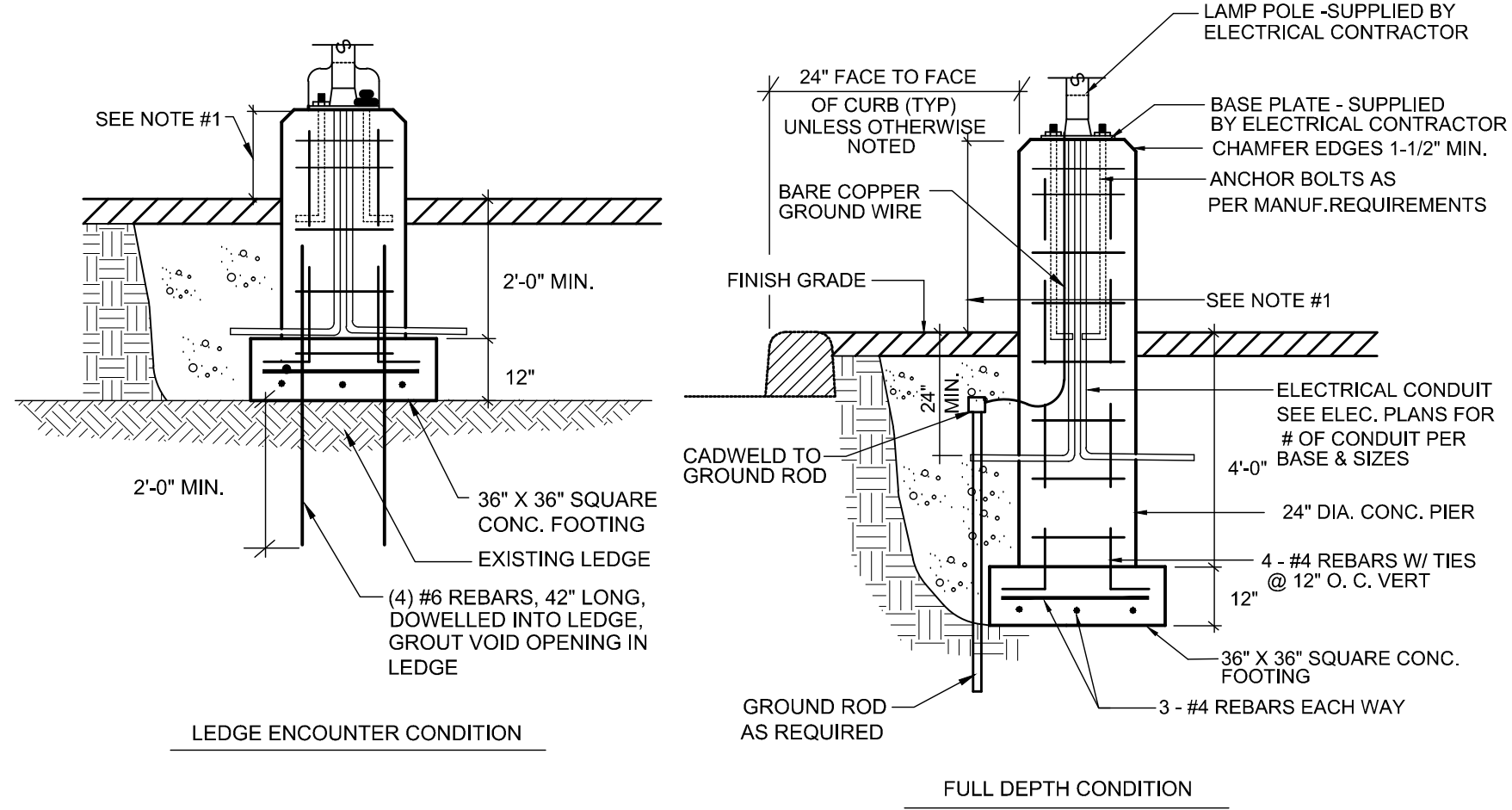


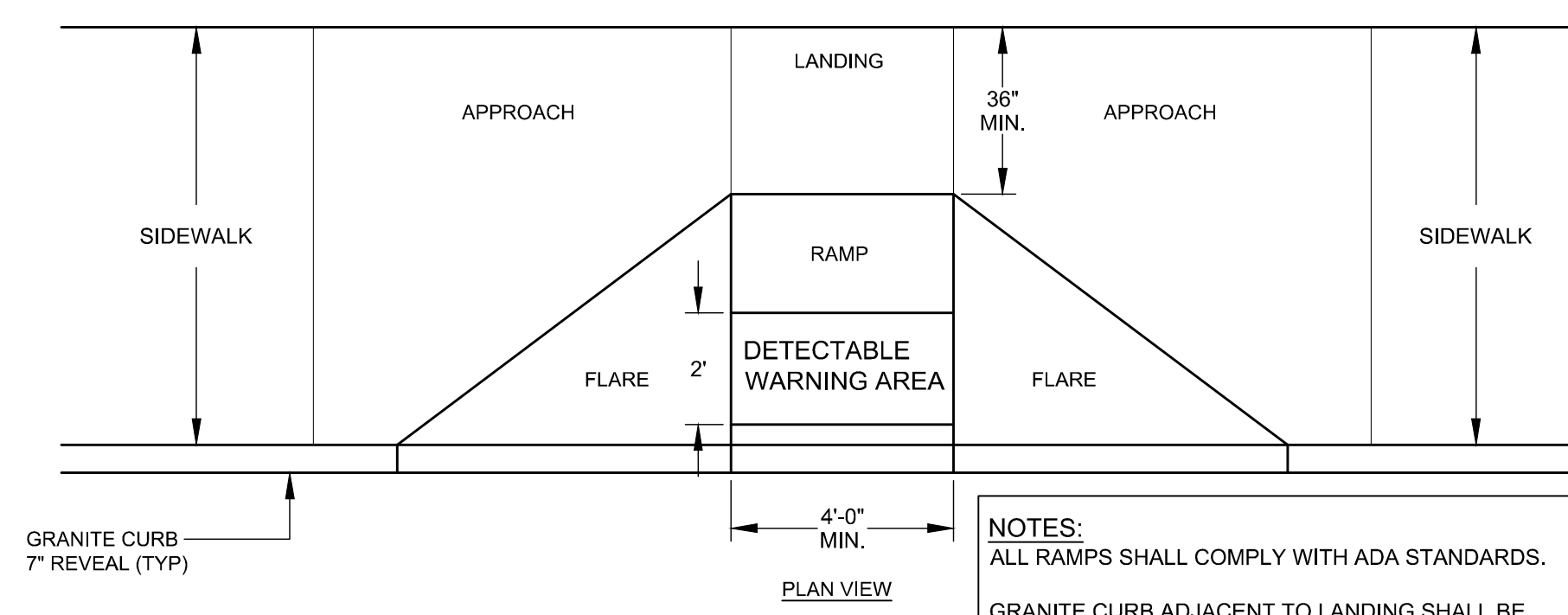
NOTE:
1. POLE BASE HEIGHT ABOVE FINISHED GRADE SHALL BE AS FOLLOWS: 30" IN UNPROTECTED PARKING LOT, 2' IN PROTECTED SIDEWALK LOCATION. REFER TO LAYOUT SHEET CP101 FOR INDIVIDUAL POLE BASE LOCATIONS.



J1 NEW CONCRETE SITE LIGHT BASE

NO SCALE

DESIGN ELEMENT:	SLOPE IN DIRECTION OF TRAVEL:	CROSS SLOPE:
APPROACH	8.33% MAXIMUM	2%
LANDING	2%	2%
RAMP	8.33% MAXIMUM	MATCH STREET GRADE
FLARE	10% MAX. AT CURB FACE	-
SIDEWALK	MATCH STREET GRADE	2%



NOTES:
ALL RAMPS SHALL COMPLY WITH ADA STANDARDS.
GRANITE CURB ADJACENT TO LANDING SHALL BE FLUSH WITH STREET.
SIDEWALK MATERIAL PER CITY SIDEWALK MATERIAL POLICY.
DETECTABLE WARNING AREA INSTALLATION PER CITY SIDEWALK MATERIAL POLICY SEE DETAILS A1 SHEET C503 FOR ADDITIONAL INSTALLATION INFORMATION.
ADA RAMP SURFACE MATERIAL TO CONFORM TO SIDEWALK MATERIAL

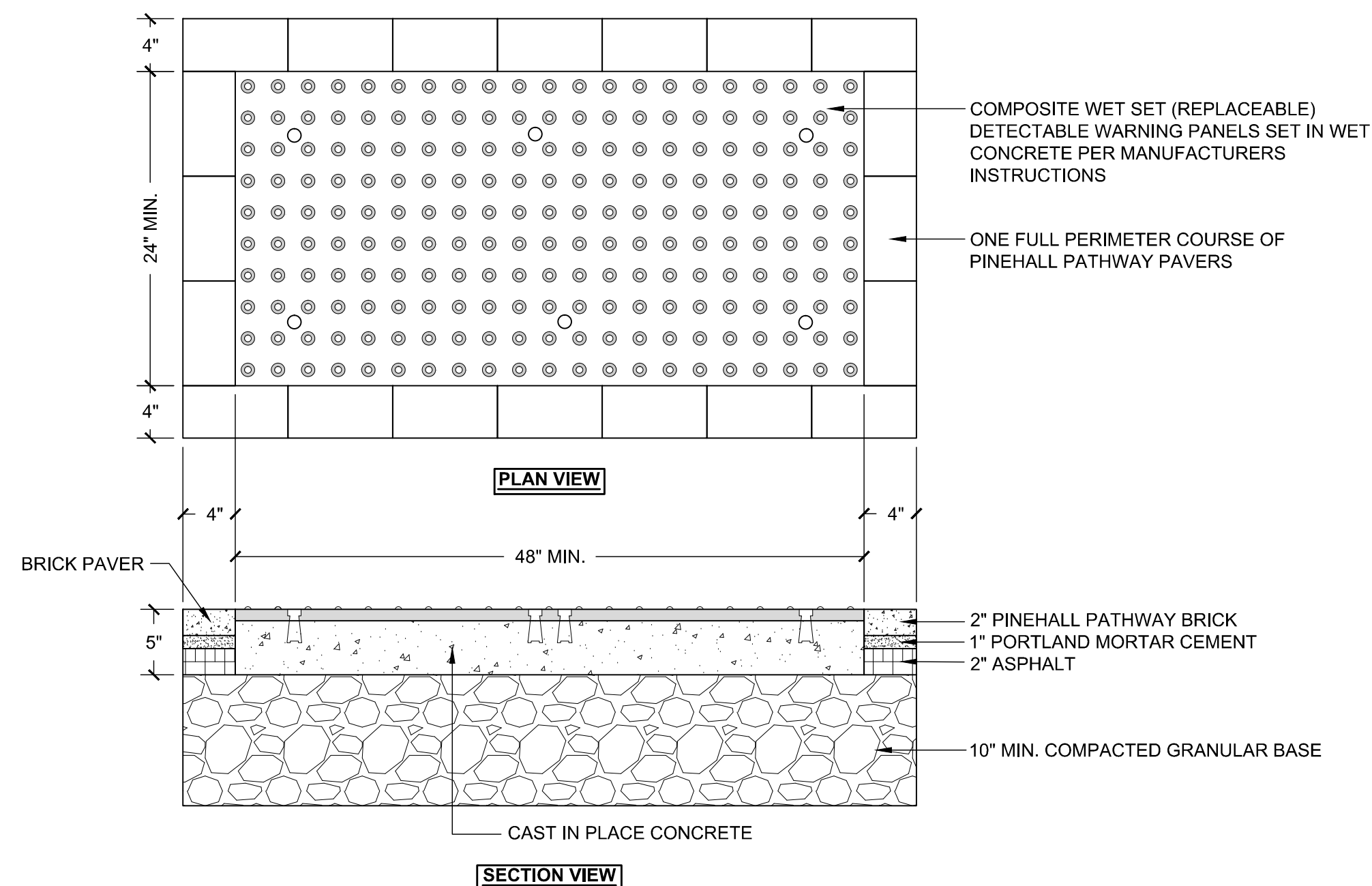
J5 NEW ADA RAMP

NO SCALE

~NOT USED~

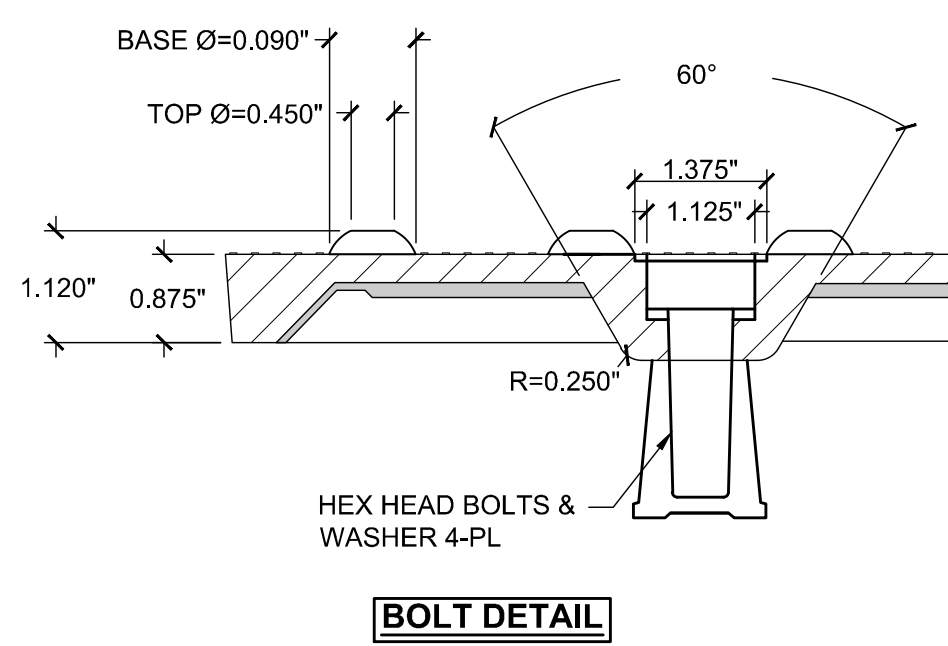
J11

NO SCALE



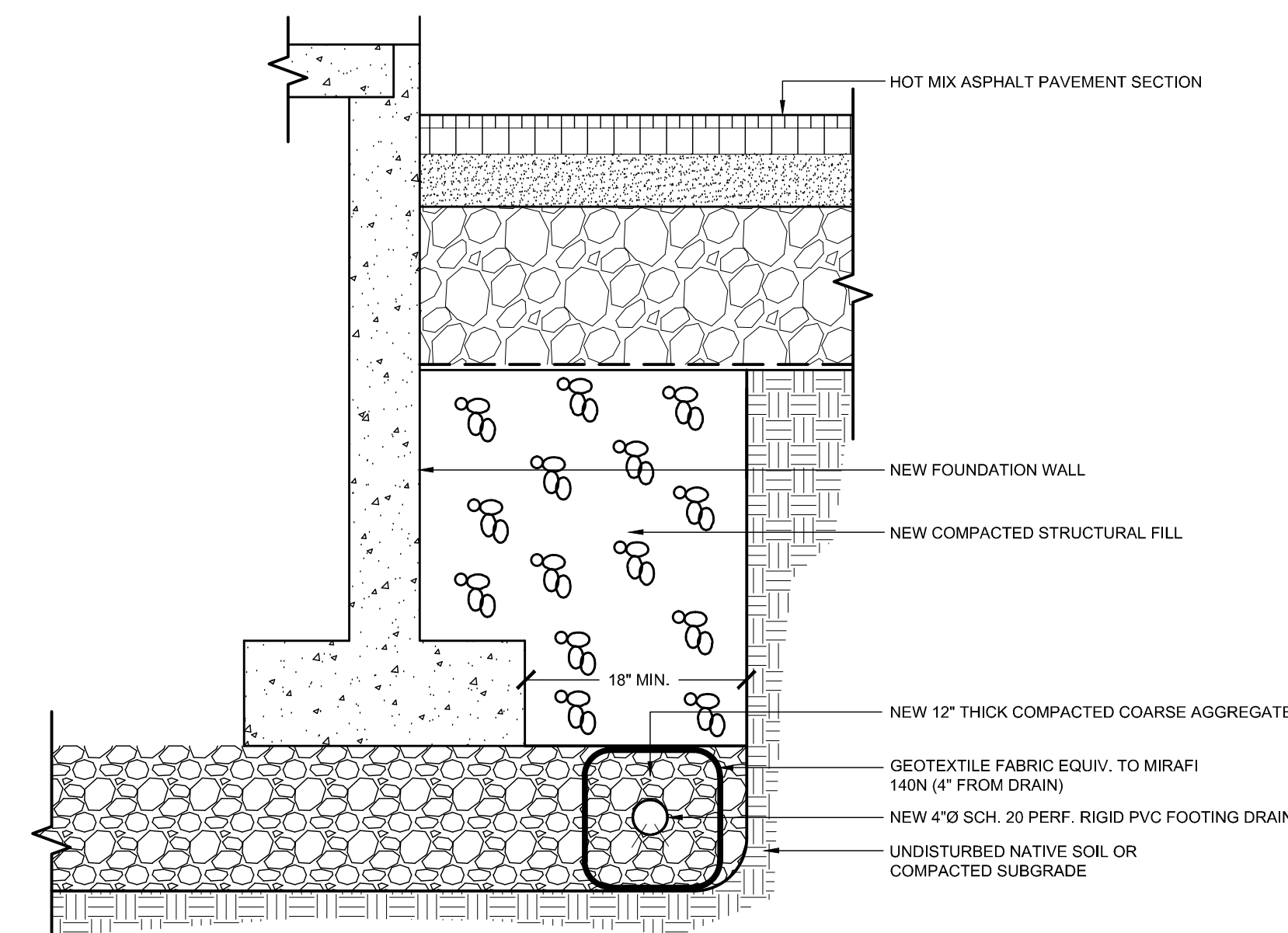
A1 NEW DETECTABLE WARNING PANEL

NO SCALE



A5 NEW BIKE RACK BASE

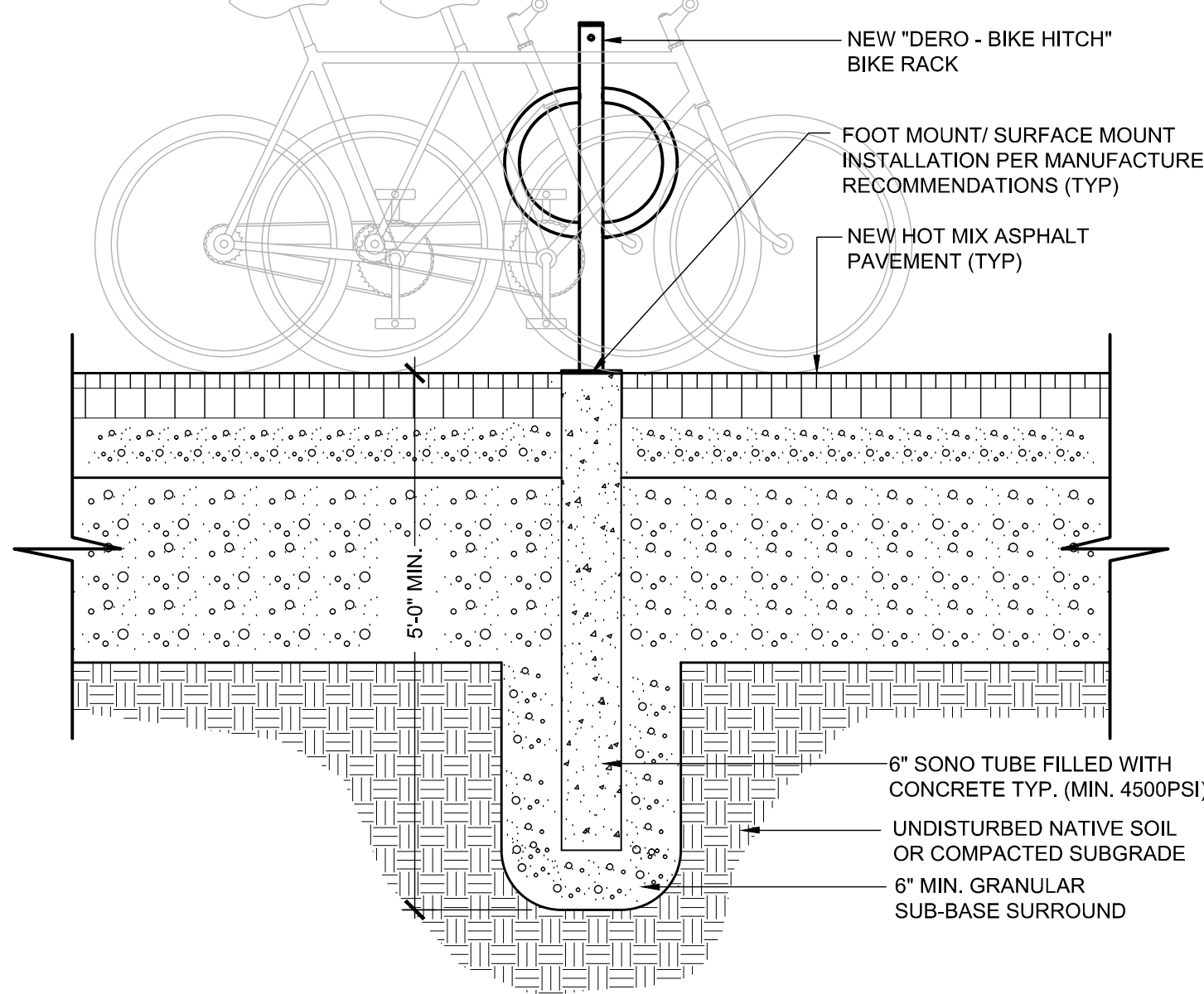
NO SCALE



E11 NEW FOOTING DRAIN

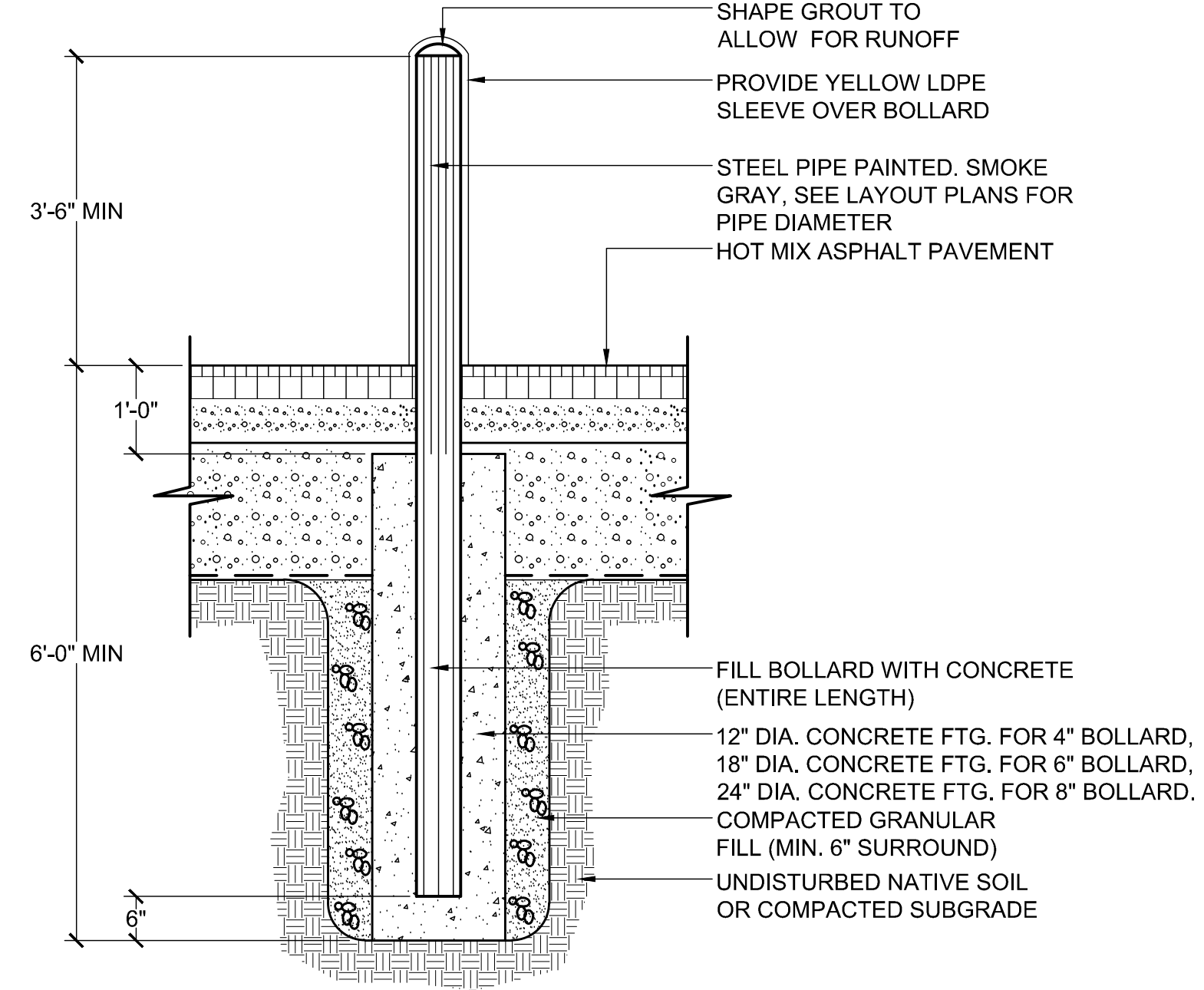
NO SCALE

1. COMPOSITE WET SET (REPLACEABLE) DETECTABLE WARNING PANELS SHALL BE AS MANUFACTURED BY ADA SOLUTIONS, INC. (WWW.ADATILES.COM), OR APPROVED EQUAL.
2. CAST IN PLACE CONCRETE SHALL MEET SPECIFICATIONS FOR MAINE D.O.T. CLASS A STRUCTURAL CONCRETE, MINIMUM COMPRESSIVE STRENGTH 4,000 PSI. THE CONCRETE SHALL BE SEALED PRIOR TO SETTING PANELS.
3. TRUNCATED DOMES SHALL BE ALIGNED IN ROWS, PARALLEL AND PERPENDICULAR TO THE PREDOMINANT DIRECTION OF TRAVEL. NO OTHER DETECTABLE WARNING DESIGN OR CONFIGURATION IS ALLOWED.
4. FOR ALL DETECTABLE WARNING PANELS, WITHIN OR ABUTTING HISTORIC DISTRICTS AND HISTORIC LANDSCAPES, "DARK GRAY" COLORED (#36118) PANELS SHALL BE USED. FOLLOW MANUFACTURER'S INSTRUCTIONS FOR INSTALLATION.
5. THE DETECTABLE WARNING PANEL SHALL HAVE ONE FULL COURSE OF PINEHALL PATHWAY PAVERS (THE CURRENT BRICK STANDARD) AROUND THE FULL PERIMETER OF THE PANEL. THIS PERIMETER COURSE SHALL BE SET USING PORTLAND MORTAR CEMENT TO CREATE A FLUSH SURFACE BETWEEN THE BRICK AND THE PANEL.
6. SIZE: THE DETECTABLE WARNING PANEL(S) SHALL EXTEND 24 INCHES MINIMUM IN THE DIRECTION OF TRAVEL AND THE FULL WIDTH OF THE CURB RAMP, LANDING, OR BLENDED TRANSITION TO THE STREET.
7. ORIENTATION: THE DETECTABLE WARNING PANEL SHALL BE LOCATED SO THAT THE EDGE NEAREST THE CURB LINE IS 6 INCHES MINIMUM AND 8 INCHES MAXIMUM FROM THE CURB LINE. THE PANEL SHALL BE ORIENTED TO THE DIRECTION OF TRAVEL AS IDENTIFIED BY THE POINT OF EGRESS.



A11 NEW STEEL BOLLARD

NO SCALE



0	ISSUED FOR BID	6 JUNE 2016
REV.	DESCRIPTION	DATE
ASYLUM		
PROJECT: PORTLAND, MAINE		
SITE DETAILS		
SHEET TITLE: 407110-C501.DWG		
WBRC CAD FILE: 4071.10 GRAPHIC SCALE: 0" = 1"		
PROJECT No. 4071.10 SCALE: NO SCALE		
P/E: JRB	SHEET No. C503	
DRAWN BY: TAR		
A/E OF RECORD: JSK		

Jun 06, 2016 - 1:57pm T:\02 Projects - Maine\4001-4000\4010 Asylum Expansion & Renovation 5D-CAD2 Design\Drawings\407110-C501.dwg tabbyr/charles