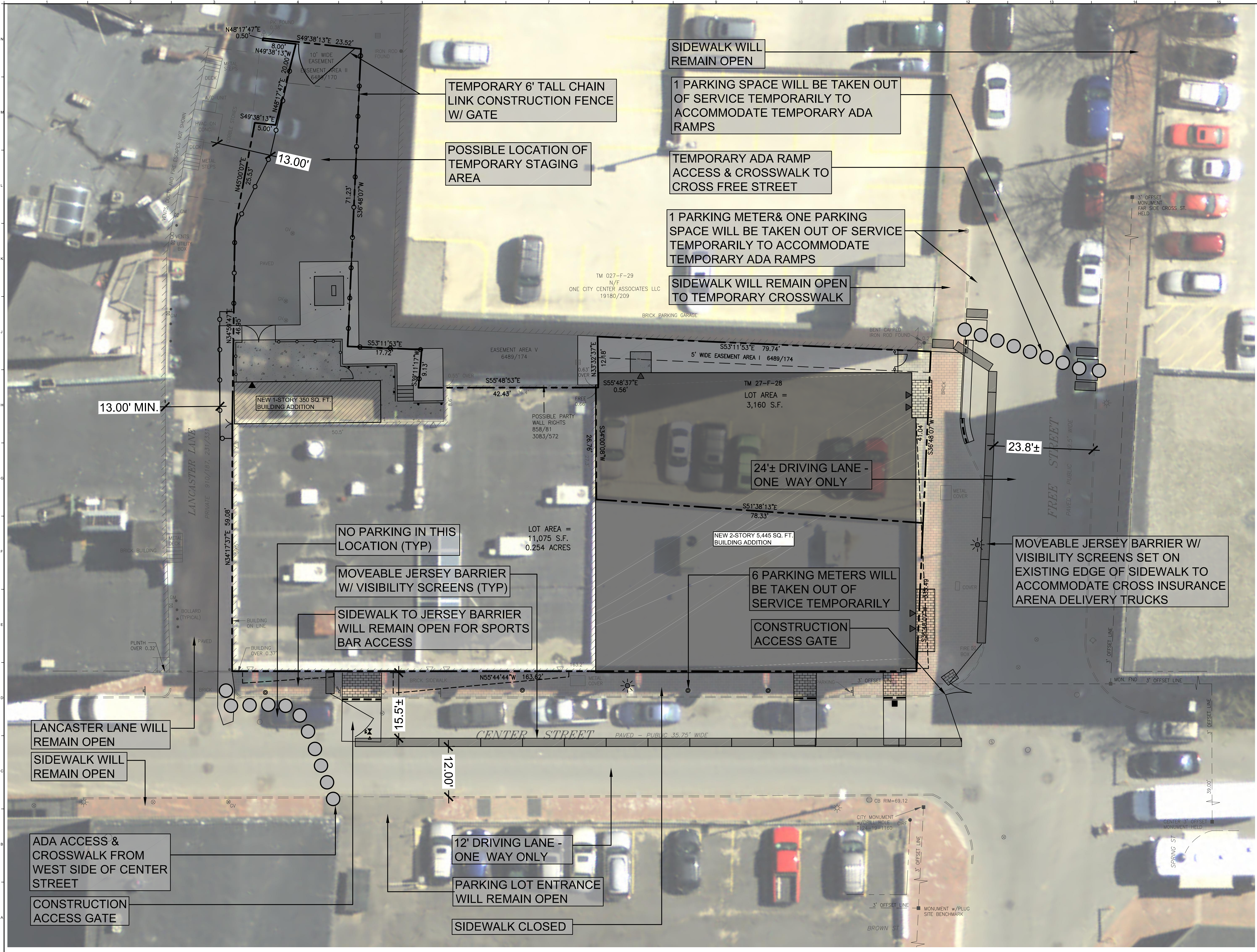
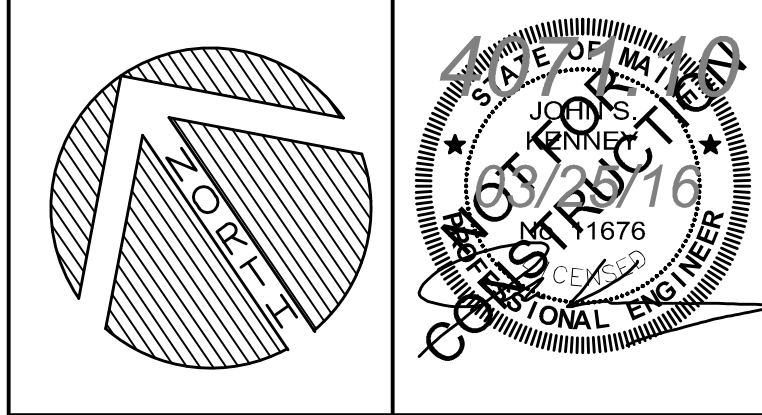


Mar 25, 2016 - 11:49am
 T:\02 Projects - Home\4001-4100\407110-Asylum Expansion & Renovation 5D-CAL2 Design\Drawings\Site\407110-PH101.dwg tcd\richards



EXISTING	LEGEND	PROPOSED
☼	STREET LIGHTING	☼
•	BOLLARD	•
⊕	WATER SHUTOFF / GATE VALVE	⊕
⊙	PARKING METER	⊙
⊙	GAS VALVE	⊙
⊙	TRANSFORMER PAD	⊙
○	MANHOLE	○
○	SEWER MANHOLE	○
○	CATCH BASIN	○
○	FIRE HYDRANT	○
—	SIGN	—
—	FENCING	—
—	GUARD RAIL	—
—	PAVEMENT	—
—	SIDEWALK	—
—	GRANITE CURB	—
—	PROPERTY SETBACK	—
—	PROPERTY LINE	—
—	ABUTTING PROPERTY LINE	—

REV.	DESCRIPTION	DATE
0	DD SUBMISSION	25 MAR 2016



WBRC
 ARCHITECTS • ENGINEERS
 WWW.WBRCAE.COM
 BANGOR, MAINE 207-947-4811
 PORTLAND, MAINE 207-428-4811
 SARASOTA, FLORIDA 941-373-1883

PROJECT:	PORTLAND, MAINE
SITE CONSTRUCTION PLAN	
SHEET TITLE:	407110-PH101.DWG
WBRC CAD FILE:	407110-PH101.DWG
PROJECT No:	407110
SCALE:	1"=10'
PM:	JRB
DRAWN BY:	JWB
AE OF RECORD:	JSK
PH101	