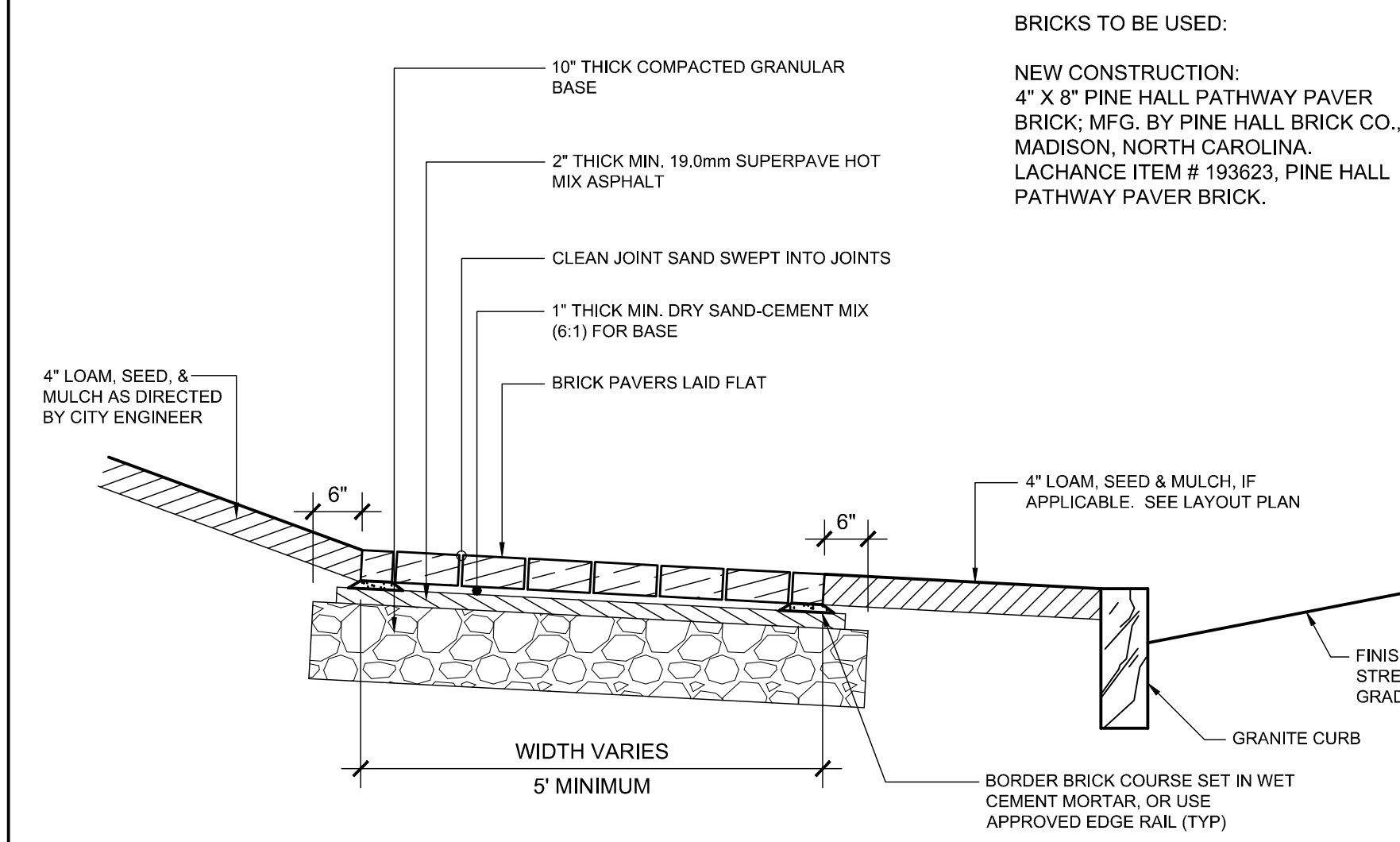
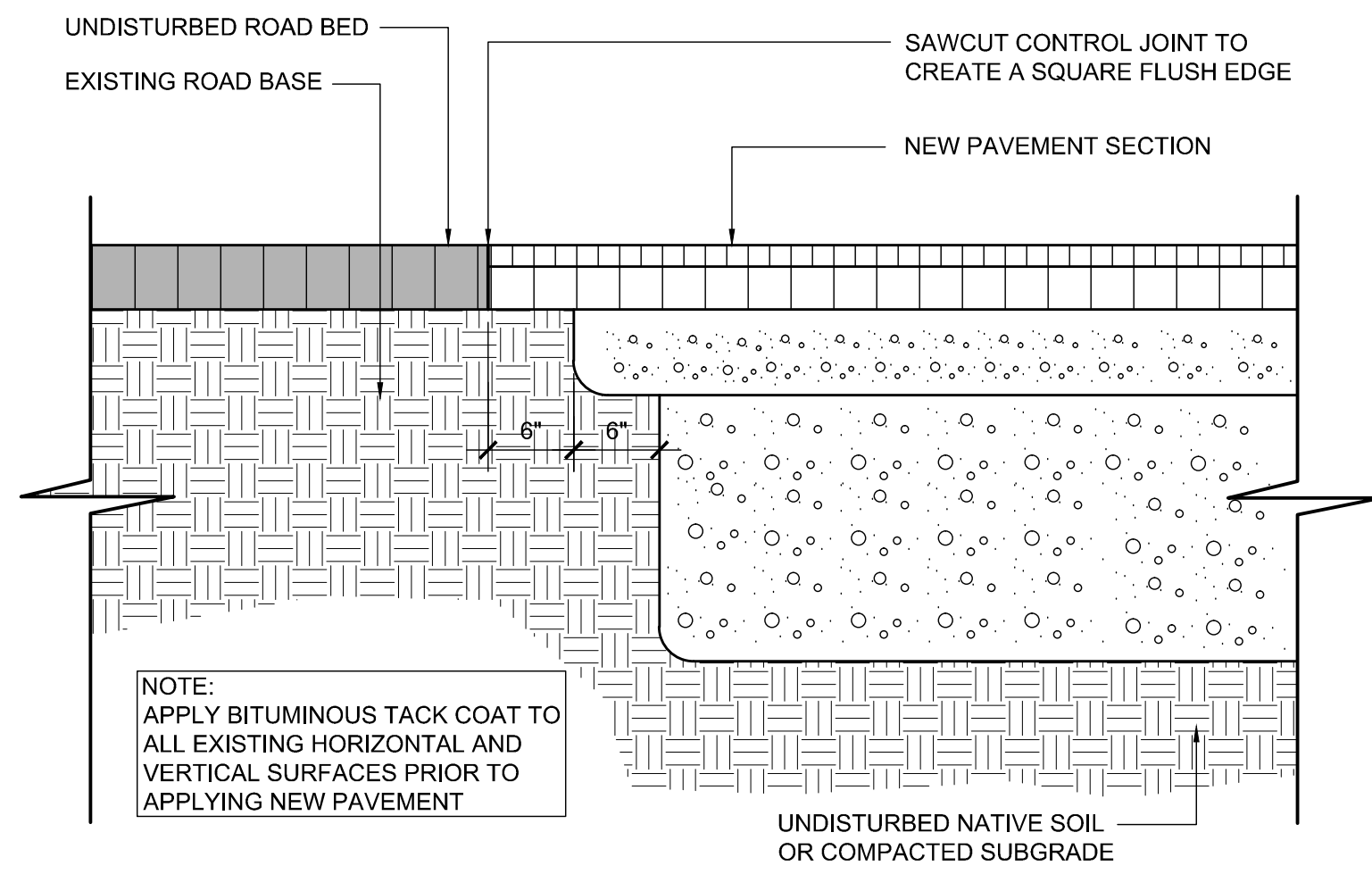
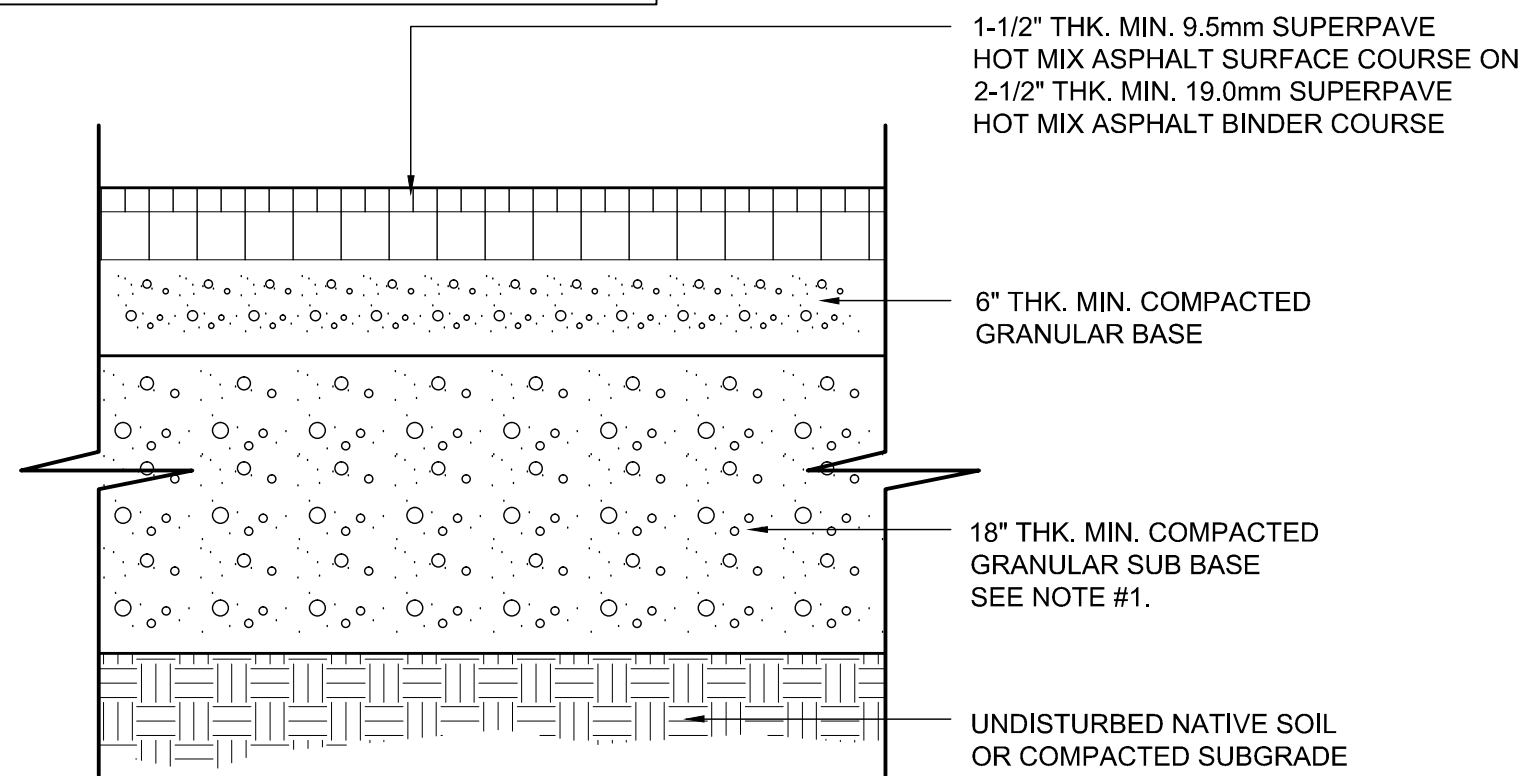


NOTE: (WITH CONSULTATION/VERIFICATION FROM GEOTECHNICAL ENGINEER, PRIOR AUTHORIZATION REQUIRED)
 1. AGGREGATE SUB-BASE MAY BE REDUCED TO 6" WHERE LEDGE IS ENCOUNTERED NEAR SUBGRADE.
 2. SEE LAYOUT PLAN FOR LOCATIONS IF APPLICABLE.
 3. LOOSE FILL SHALL BE REMOVED FROM BELOW PAVED AREAS AND REPLACED WITH COMPACTED STRUCTURAL FILL. SEE BORINGS FOR INFORMATION.

NOTE: AGGREGATE SUB-BASE AND BASE MATERIAL MUST BE EXTENDED A MINIMUM OF 24" PAST EDGE OF PAVEMENT WHERE PAVEMENT IS NOT BOUNDED BY CURB, UNLESS OTHERWISE NOTED.

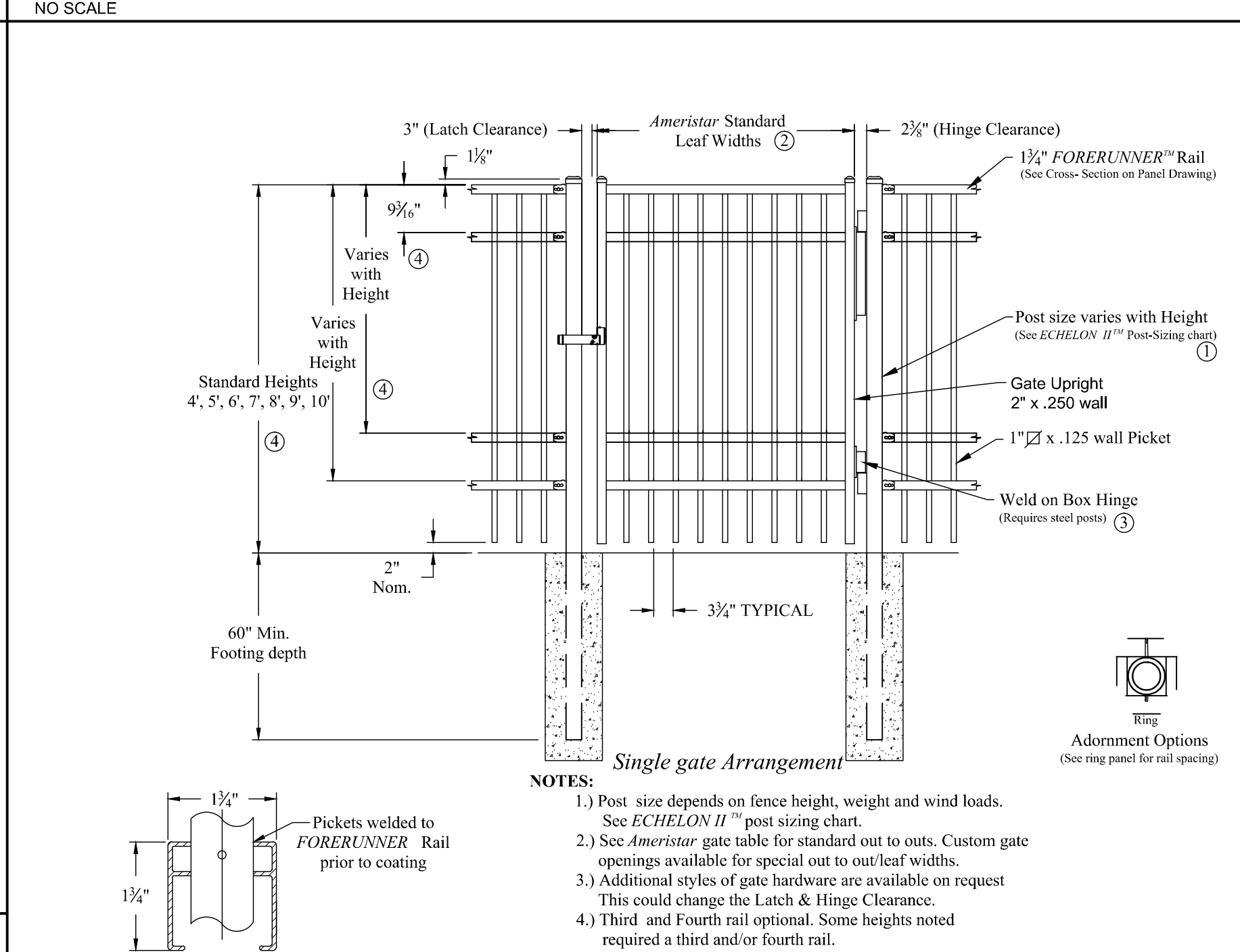
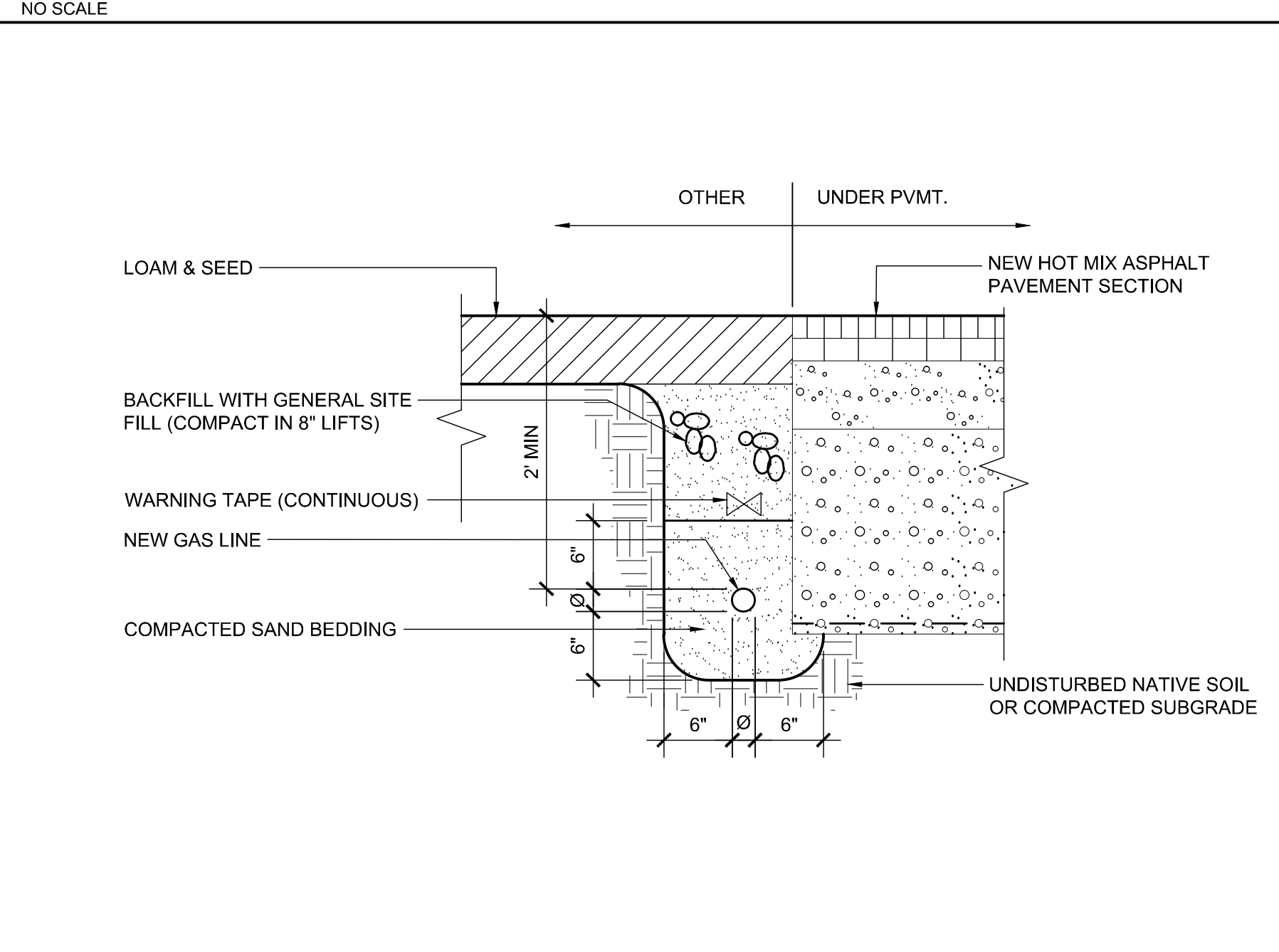
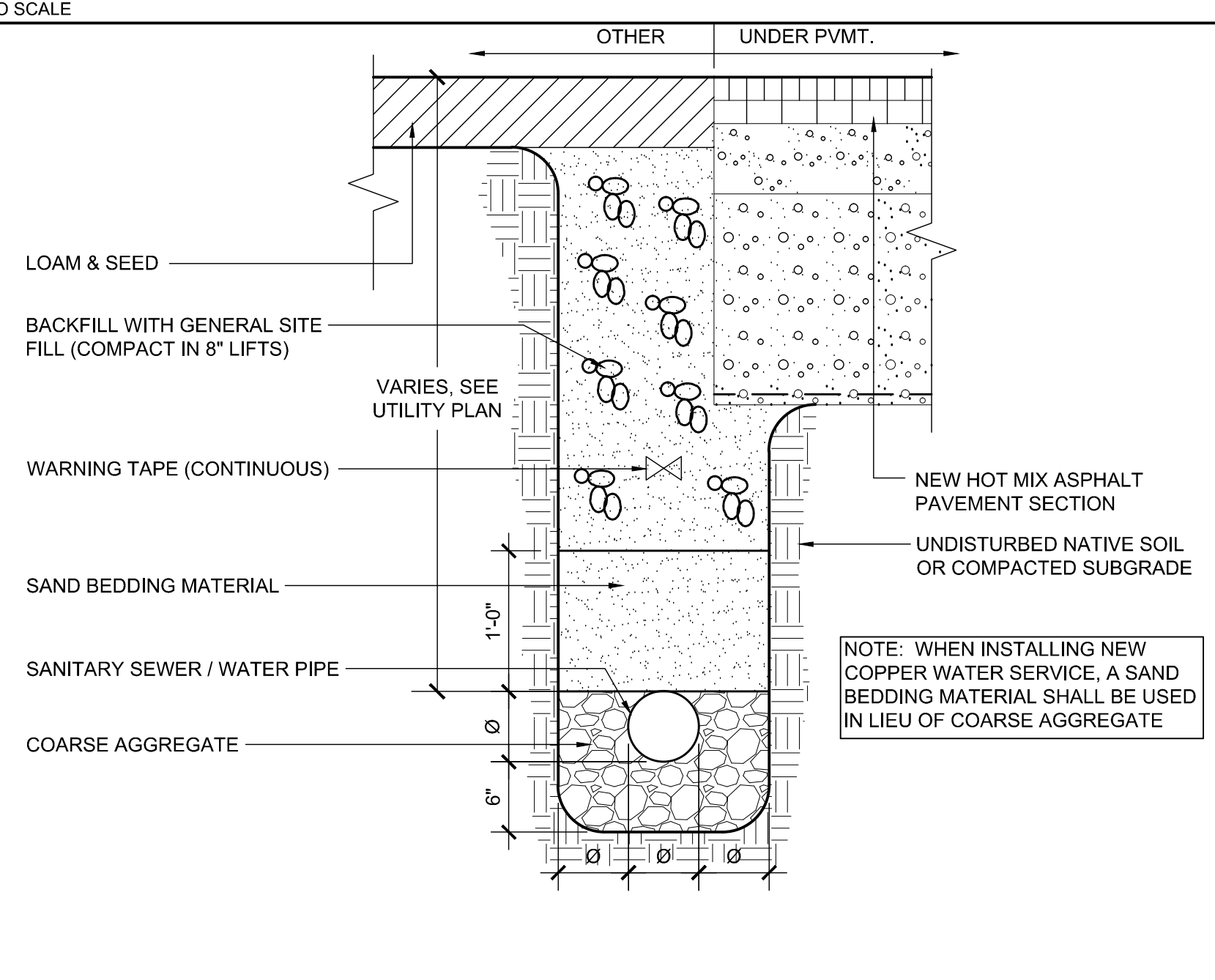


BRICKS TO BE USED:
 NEW CONSTRUCTION:
 4" X 8" PINE HALL PATHWAY PAVER BRICK; MFG. BY PINE HALL BRICK CO., MADISON, NORTH CAROLINA, LACHANCE ITEM # 193623, PINE HALL PATHWAY PAVER BRICK.

J1 NEW FULL DEPTH HOT MIX ASPHALT PAVEMENT

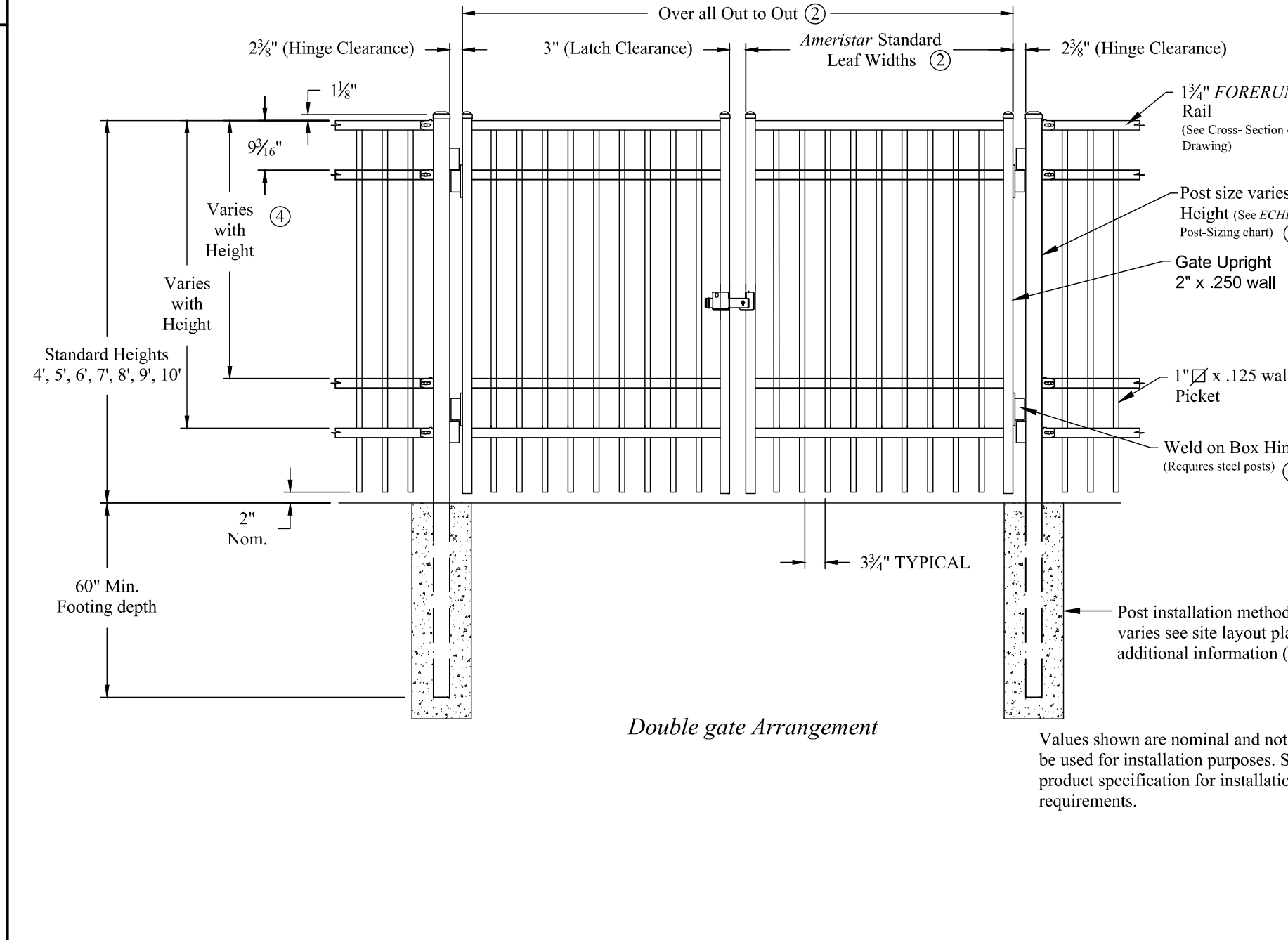
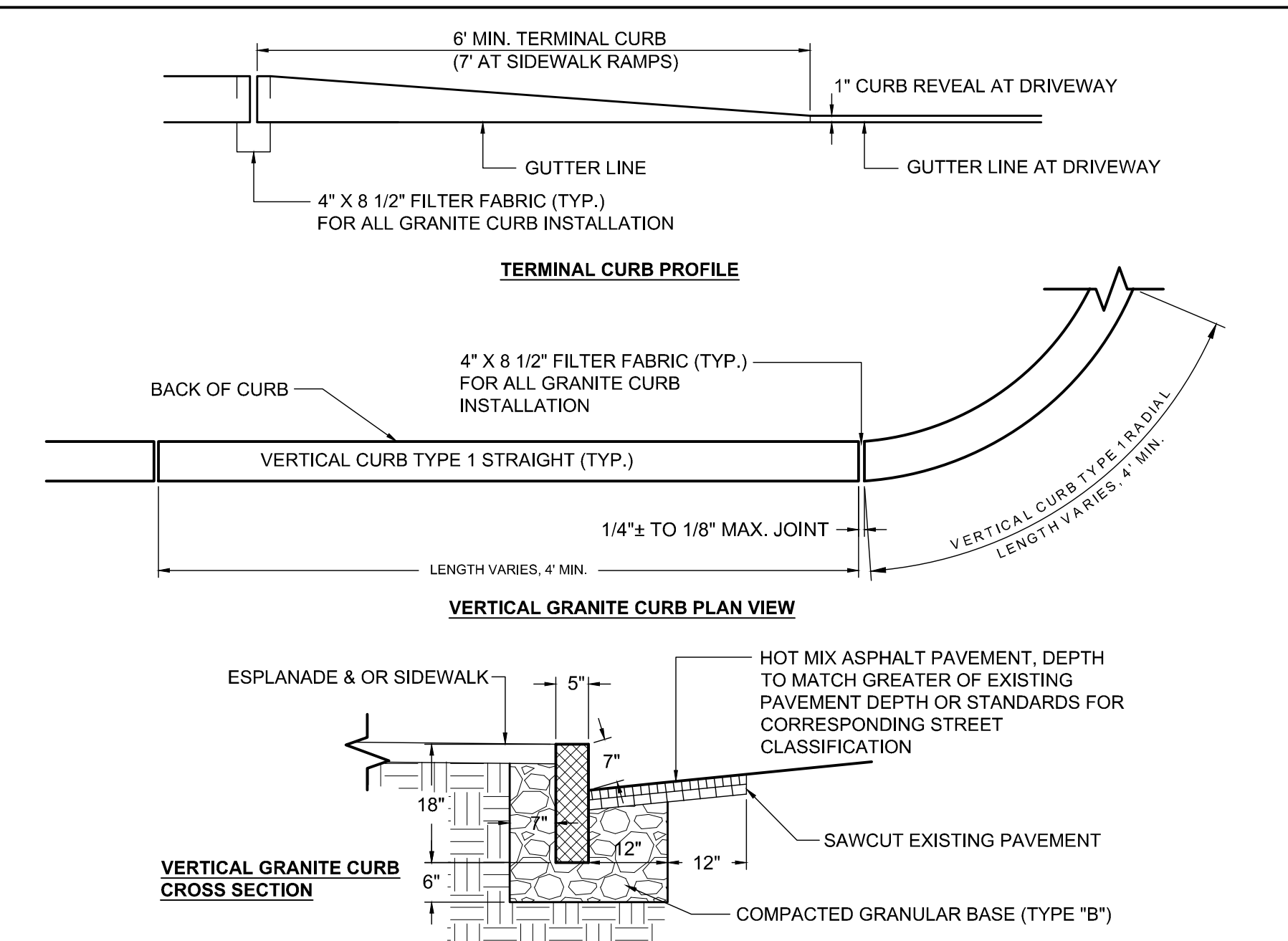
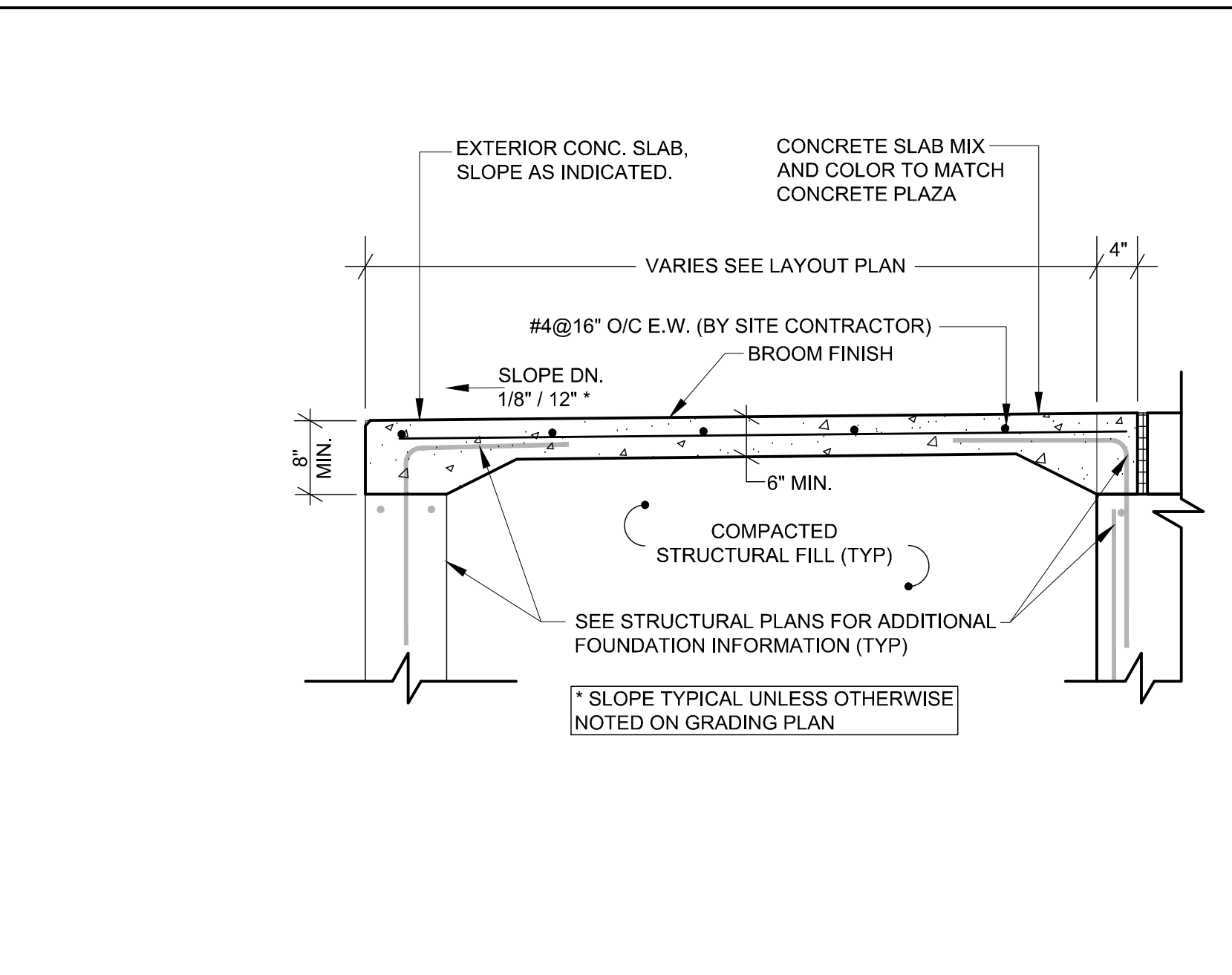
J5 NEW HOT MIX ASPHALT BUTT JOINT

J11 NEW/ REUSED PAVERS ON ASPHALT



E1 NEW SEWER / WATER TRENCH

E5 NEW GAS TRENCH



A1 NEW C.I.P. CONCRETE STRUCTURAL ENTRY SLAB

A5 NEW VERTICAL GRANITE CURB

A11 NEW METAL GATE

0	DD SUBMISSION	25 MAR 2016
REV.	DESCRIPTION	DATE
WBRC ARCHITECTS • ENGINEERS WWW.WBRC.COM BANGOR, MAINE 207-947-4011 PORTLAND, MAINE 207-628-4311 SARASOTA, FLORIDA 941-577-3583		
ASYLUM		
PROJECT: PORTLAND, MAINE		
SITE DETAILS		
SHEET TITLE: 407110-C501.DWG		
WBRC CAD FILE: 4071.10 GRAPHIC SCALE: 0" = 1"		
PROJECT No. 4071.10 NO SCALE		
PM: JRB	SHEET No. C501	
DRAWN BY: TAR		
A/E OF RECORD: JSK		

Mar 25, 2016 - 4:25am
 T:\02 Projects - Maine\4001-4000\407110 Asylum Expansion & Renovation 5D-CAD2 Design\Drawings\407110-C501.dwg Tabyr\chard