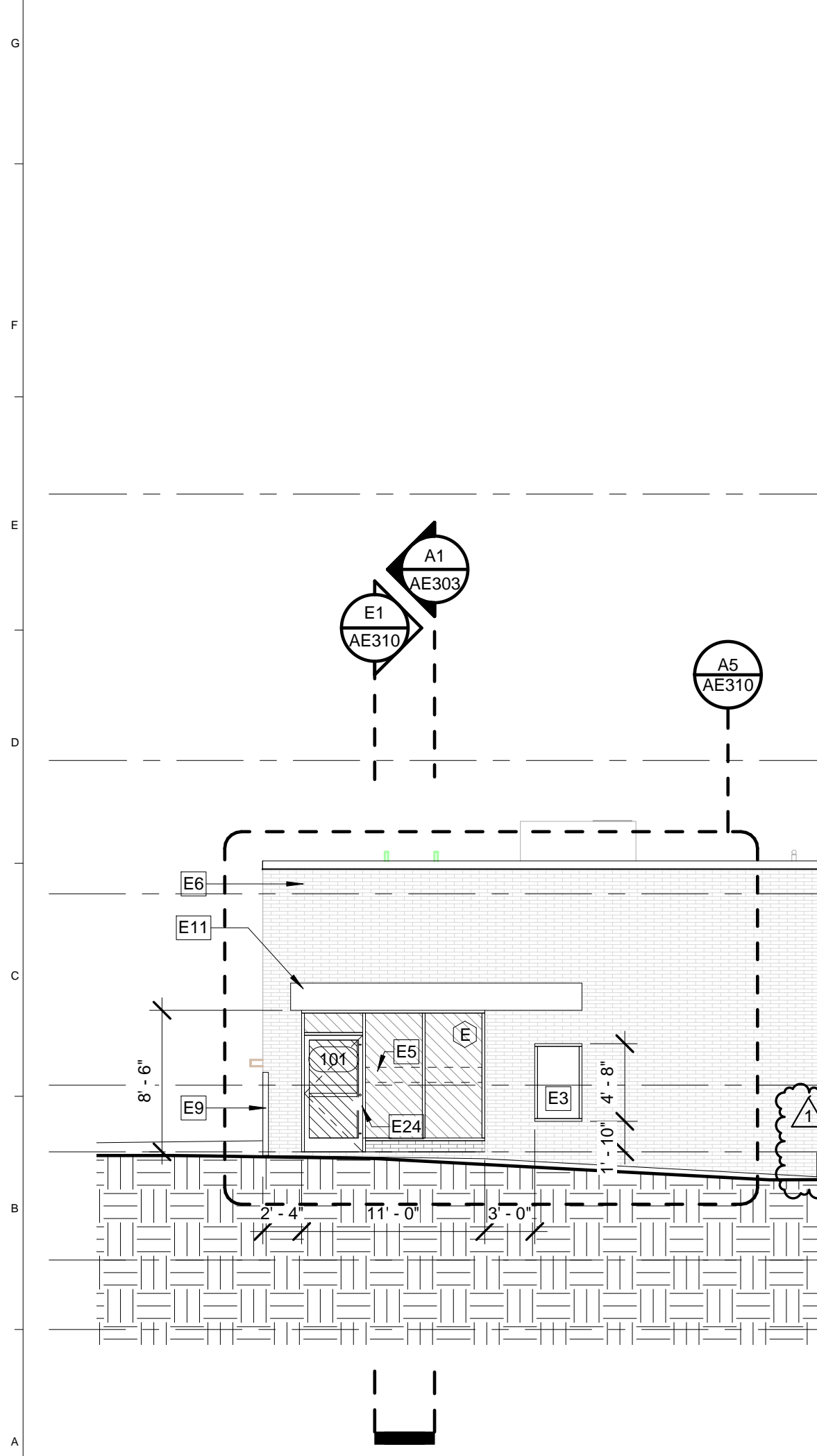
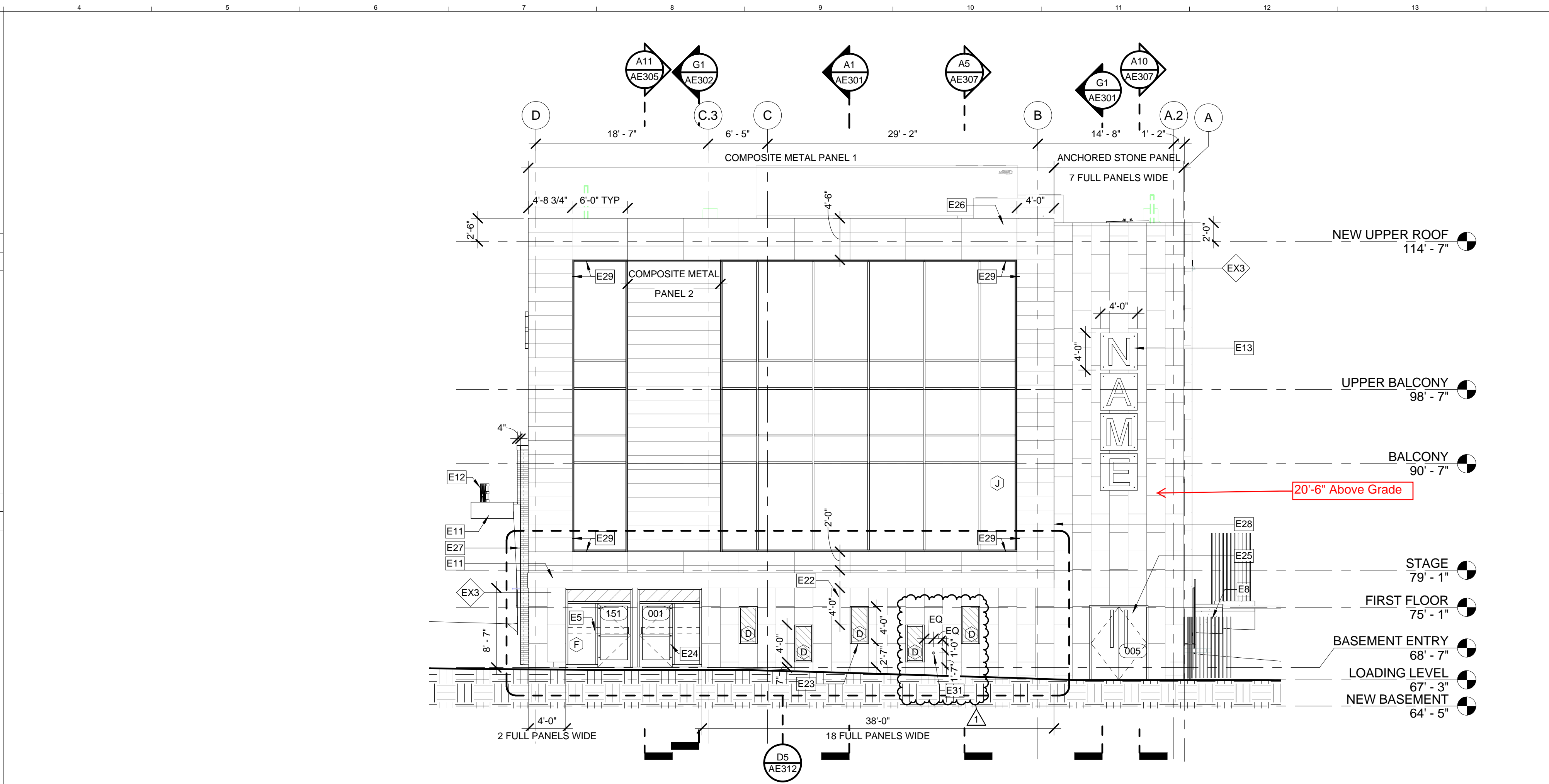


M1 COMPOSITE METAL PANEL 1
3/8" = 1'-0"

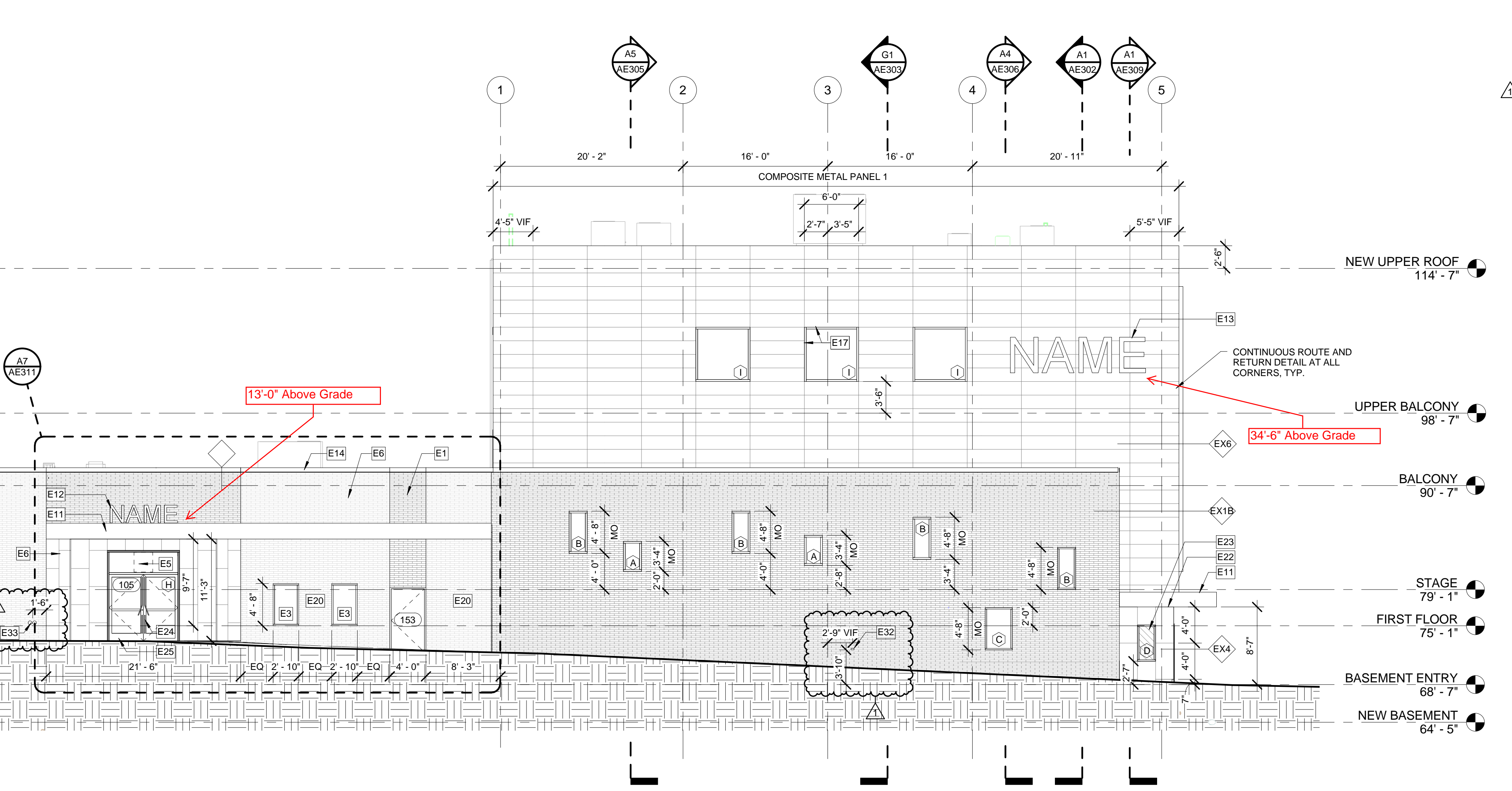
K1 COMPOSITE METAL PANEL 2
3/8" = 1'-0"



G1 STONE PANEL / COMPOSITE METAL PANEL 3
3/8" = 1'-0"

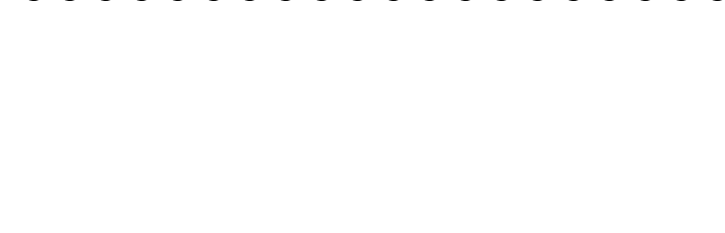


G4 SOUTHEAST ELEVATION
1/8" = 1'-0"



A1 SOUTHWEST ELEVATION
1/8" = 1'-0"

- GLAZING LEGEND:**
- GL-1: 1" THICK IGU IN STOREFRONT SYSTEM ST1
 - GL-2: 1 3/4" THICK IGU IN CURTAINWALL SYSTEM CW1
 - GL-3: 1 3/4" THICK SPANDREL PANEL CURTAINWALL SYSTEM CW1
 - GL-4: FROSTED INTERIOR SINGLE PANE GLASS
 - GL-5: CLEAR INTERIOR SINGLE PANE GLASS
- KEYNOTES:**
- E1 INFILL EXISTING CURTAINWALL LOCATION WITH NORMAN BRICK TO MATCH EXISTING DISPLAY CASE
 - E3 WINDOW FILM SIGN, DESIGN AND LOCATION TO BE COORDINATED WITH EXTERIOR SIGNAGE CONSULTANT
 - E5 CLEAN AND RE-POINT EXISTING BRICK WALL AS REQUIRED
 - E8 PROVIDE EMERGENCY EGRESS AT NEW ALLY FENCE. SEE CIVIL
 - E9 REPLACE EXISTING CORNER GUARD
 - E11 NEW METAL CANOPY
 - E12 INTERNALLY LIT BUILDING SIGNAGE. GC TO COORDINATE POWER REQUIREMENTS AND DESIGN WITH EXTERIOR SIGNAGE CONSULTANT
 - E13 HALO LIT BUILDING SIGNAGE LOCATION. GC TO COORDINATE POWER REQUIREMENT AND DESIGN WITH EXTERIOR SIGNAGE CONSULTANT
 - E14 NEW METAL COPING, ENTIRE ROOF
 - E17 WINDOW HEAD AND JAMB TO ALIGN WITH METAL PANEL SEAMS, TYP
 - E20 PATCH BRICK AT EXISTING LIGHT REMOVAL LOCATIONS
 - E22 FULL ANCHORED STONE PANEL TO ALIGN WITH BOTTOM OF CANOPY
 - E23 WINDOWS TO FIT WITH STONE PATTERN
 - E24 SPECIALTY DOOR HANDLES TO BE COORDINATED WITH BRANDING CONSULTANT AND TO MEET ALL APPLICABLE CODES
 - E25 DOOR TO BE CENTERED IN STONE PANELS
 - E26 PANEL LAYOUT POINT FOR COURSING IS TOP OF PARAPET
 - E27 METAL ACCENT STRIP TO MATCH CANOPY TO EXTEND DOWN FACE OF 4" BRICK WALL STEP
 - E28 METAL PANEL AND CANOPY TO ALIGN WITH ANCHORED STONE PANEL SEAM
 - E29 CURTAINWALL HEAD, SILL AND JAMBS TO ALIGN WITH METAL PANEL SEAMS
 - E31 CENTER RAIN WATER DOWNSPOUT NOZZLE IN PANEL. SEE MEP.
 - E32 COORDINATE HOSEBIB LOCATION WITH BRICK COURSING, SEE MEP
 - E33 FIRE DEPARTMENT CONNECTION



GENERAL NOTES:

1. ALL WALL PARTITION TYPES ARE M4 UNLESS NOTED OTHERWISE. SEE SHEET AE603 & AE604 FOR PARTITION TYPES.
2. REFER TO G1002 SHEET FOR ALL ABBREVIATIONS AND SYMBOLS.
3. REFER TO ALL DRAWINGS INCLUDING ARCHITECTURAL, CIVIL, STRUCTURAL, MECHANICAL, PLUMBING, AND ELECTRICAL DRAWINGS FOR ADDITIONAL GENERAL NOTES, ABBREVIATIONS, AND SYMBOLS.
4. VERIFY ALL EQUIPMENT OPENINGS & RECOMMENDATIONS. LOCATION AND SIZES SHOWN ARE FOR INTENT PURPOSES ONLY. ADJUST ROUGH OPENINGS AND LOCATIONS AS REQUIRED PER ACTUAL EQUIPMENT.
5. G.C. TO PROVIDE & INSTALL ALL IN-WALL OR IN-CEILING BLOCKING / BRACING AS REQUIRED FOR ALL MILLWORK ITEMS, EQUIPMENT, SHELVING, AND ACCESSORIES WHETHER ITEMS ARE BY G.C. OR OTHERS COORDINATE WITH OWNER.
6. G.C. SHALL BE RESPONSIBLE FOR LAYING OUT THE SPACE PRIOR TO COMMENCING WORK AND SHALL NOTIFY THE ARCHITECT AND OWNER OF ANY DISCREPANCIES.
7. ALL CONCRETE MASONRY UNITS AND MORTAR TO INCLUDE AN INTEGRAL WATER REPELLENT.
8. ALL EXTERIOR DIMENSIONS ARE TO FACE STUD AND / OR FACE OF FOUNDATION AND MASONRY UNLESS SPECIFICALLY NOTED OTHERWISE.
9. ALL INTERIOR DIMENSIONS SHOWN ARE TO FACE OF FRAMING UNLESS SPECIFICALLY NOTED OTHERWISE.
10. REFER TO SHEET G1003-005 FOR CODE COMPLIANCE PLAN, CODE REFERENCE INFORMATION AND FIRE RATED PARTITIONS AND SPACES. ALL MECHANICAL, ELECTRICAL, SPRINKLER AND PLUMBING PENETRATIONS THROUGH FIRE RATED CONSTRUCTION SHALL BE SLEEVED, FIRE SAFED AND / OR HAVE FIRE DAMPERS EQUIVALENT TO THE HOURLY FIRE RATING OF THE CONSTRUCTION.
11. ALL DRAWINGS ARE OF EQUAL IMPORTANCE IN DEFINING THE WORK OF THE CONTRACT DOCUMENTS. CONTRACTORS SHALL REVIEW ALL DRAWINGS BEFORE THE INSTALLATION OF THEIR WORK. SHOULD THERE BE A DISCREPANCY WITHIN AND BETWEEN THE DRAWINGS THAT WOULD CAUSE AN AWKWARD OR IMPROPER INSTALLATION NOTIFY ARCHITECT FOR CLARIFICATION PRIOR TO INSTALLATION OF SAID WORK. ANY WORK INSTALLED IN CONFLICT WITH THE ARCHITECTURAL DRAWINGS, SHALL BE CORRECTED BY CONTRACTOR AT THEIR EXPENSE AND AT NO ADDITIONAL COST TO THE OWNER OR ARCHITECT.
12. DO NOT SCALE DRAWINGS, THE DRAWINGS ARE NOT NECESSARILY TO SCALE - USE GIVEN DIMENSIONS. CONTRACTOR SHALL VERIFY ALL CONDITIONS AND DIMENSIONS AT THE JOB SITE PRIOR TO THE START OF CONSTRUCTION. IF DISCREPANCIES ARE FOUND, NOTIFY ARCHITECT FOR CLARIFICATION BEFORE COMMENCING THE WORK.
13. DETAILS NOT SHOWN ARE SIMILAR IN CHARACTER TO THOSE SHOWN, WHERE SPECIFIC DIMENSIONS, DETAILS, OR DESIGN INTENT CANNOT BE DETERMINED CONSULT ARCHITECT BEFORE PROCEEDING WITH THE WORK.
14. ALL PITCHED FLOOR AREAS SHOWN WITH PITCH LINES SHALL SLOPE AT 1/4" PER FOOT UNLESS OTHERWISE NOTED. PROVIDE A SLAB DEPRESSION AT ALL FLOOR DRAINS WHERE PITCH LINES ARE NOT SHOWN ON PLAN.
15. FINISH FLOOR ELEVATIONS ARE TO TOP OF CONCRETE, UNLESS OTHERWISE NOTED.
16. INSTALL ALL RECESSED CABINETS, PANELS, BOXES LOCATED IN FIRE-RATED PARTITIONS TO MAINTAIN THE FIRE-RATED CONSTRUCTION.
17. REFER TO MECHANICAL AND ELECTRICAL DRAWINGS AND MANUFACTURERS TEMPLATE DRAWINGS FOR ALL MECHANICAL AND ELECTRICAL EQUIPMENT SUPPORTS, BOLT SETTING TEMPLATES, ISOLATIONS, SPRING ISOLATION, ETC. NOT SHOWN ON THE DRAWINGS.
18. OWNER FURNISHED ITEMS THE G.C. SHALL COORDINATE AND PROVIDE ELECTRICAL, PLUMBING, AND MECHANICAL CONNECTIONS FOR ALL EQUIPMENT.

1	ASI 046	06 DEC 2016
0	ISSUED FOR CONSTRUCTION	06 JUNE 2016
REV.	DESCRIPTION	DATE

PROJECT NORTH

WBRC ARCHITECTS ENGINEERS
WWW.WBRCAE.COM
BANGOR, MAINE 207-947-4511
PORTLAND, MAINE 207-528-4511
SARASOTA, FLORIDA 941-556-0757

ASYLUM

BUILDING ELEVATIONS

SHEET TITLE: WBRC CAD FILE: C:\Users\jocelyn.booth\Documents\407110 - ASYLUM DANCE CLUB - ARCH - jocelyn.booth.rvt

PROJECT No: 4071.10 GRAPHIC SCALE: 0" = 1'

SCALE: As indicated

PROJECT MANAGER: JRB SHEET No: AE202

DRAWN BY: JRB

CHECKED BY: JET/MEJ

12/7/2016 8:50:33 AM C:\Users\jocelyn.booth\Documents\407110 - ASYLUM DANCE CLUB - ARCH - jocelyn.booth.rvt