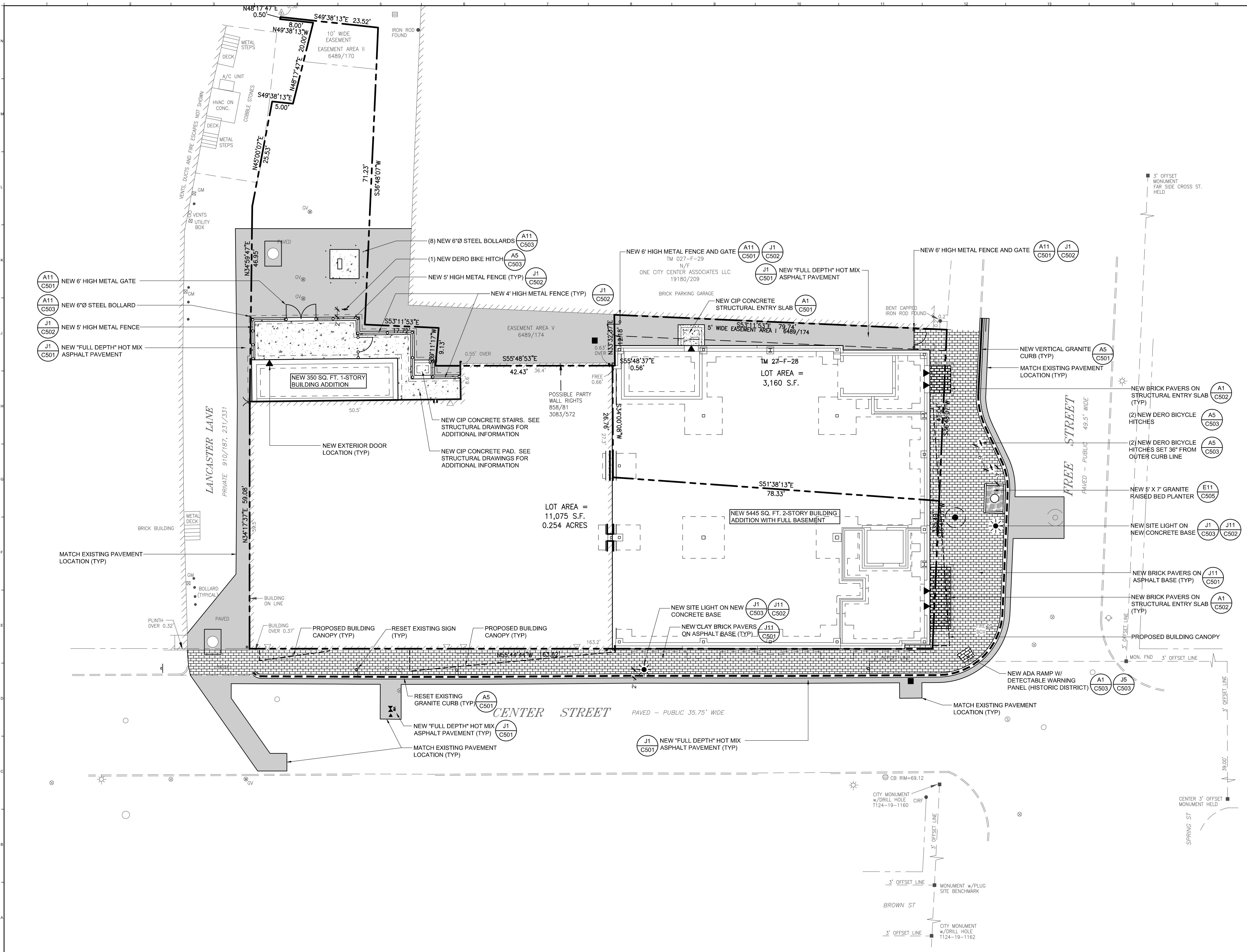


Jun 06, 2016 - 04:20m
 T:\02 Projects - Name\4001-4004\07110-Asylum Expansion 4 Renovation 5D-CA2 Design\Drawings\Site\407110-SP101.dwg JobyRichards



- LAYOUT NOTES:**
- SEE NOTE L1 - L3 ON SHEET C - 001 FOR ADDITIONAL LAYOUT INFORMATION.
 - SITE INFORMATION BASED ON A SURVEY BY OWEN HASKELL INC.
 - COORDINATE ALL SIDEWALK LOCATIONS WITH ARCH. AND STRUCTURAL DRAWINGS TO VERIFY NEW EXTERIOR DOOR LOCATIONS. FIELD ADJUST AS REQUIRED.
 - REFER TO STRUCTURAL SHEETS FOR NEW FOUNDATION LAYOUT. COORDINATE LAYOUT WITH FOUNDATION CONTRACTOR.
 - ALL CONSTRUCTION WITHIN THE STREET RIGHT OF WAY SHALL MEET CITY OF PORTLAND TECHNICAL MANUAL STANDARDS.

EXISTING	LEGEND	PROPOSED
	STREET LIGHTING	
	BOLLARD	
	WATER SHUTOFF / GATE VALVE	
	PARKING METER	
	GAS VALVE	
	TRANSFORMER PAD	
	MANHOLE	
	SEWER MANHOLE	
	CATCH BASIN	
	FIRE HYDRANT	
	SIGN	
	FENCING	
	GUARD RAIL	
	PAVEMENT	
	SIDEWALK	
	GRANITE CURB	
	PROPERTY SETBACK	
	PROPERTY LINE	
	ABUTTING PROPERTY LINE	

0	ISSUED FOR BID	6 JUNE 2016
REV.	DESCRIPTION	DATE

MOBILE

WBRC
 ARCHITECTS • ENGINEERS
 WWW.WBRCAE.COM
 BANGOR, MAINE 207-947-4811
 PORTLAND, MAINE 207-429-4811
 SARASOTA, FLORIDA 941-373-1883

ASYLUM	
PROJECT:	PORTLAND, MAINE
SITE LAYOUT AND MATERIALS PLAN	
SHEET TITLE:	
WBRC CAD FILE:	407110-SP101.DWG
PROJECT No:	4071.10
SCALE:	1"=10'
PM:	JRB
DRAWN BY:	JWB
AE OF RECORD:	JSK
 CP101	