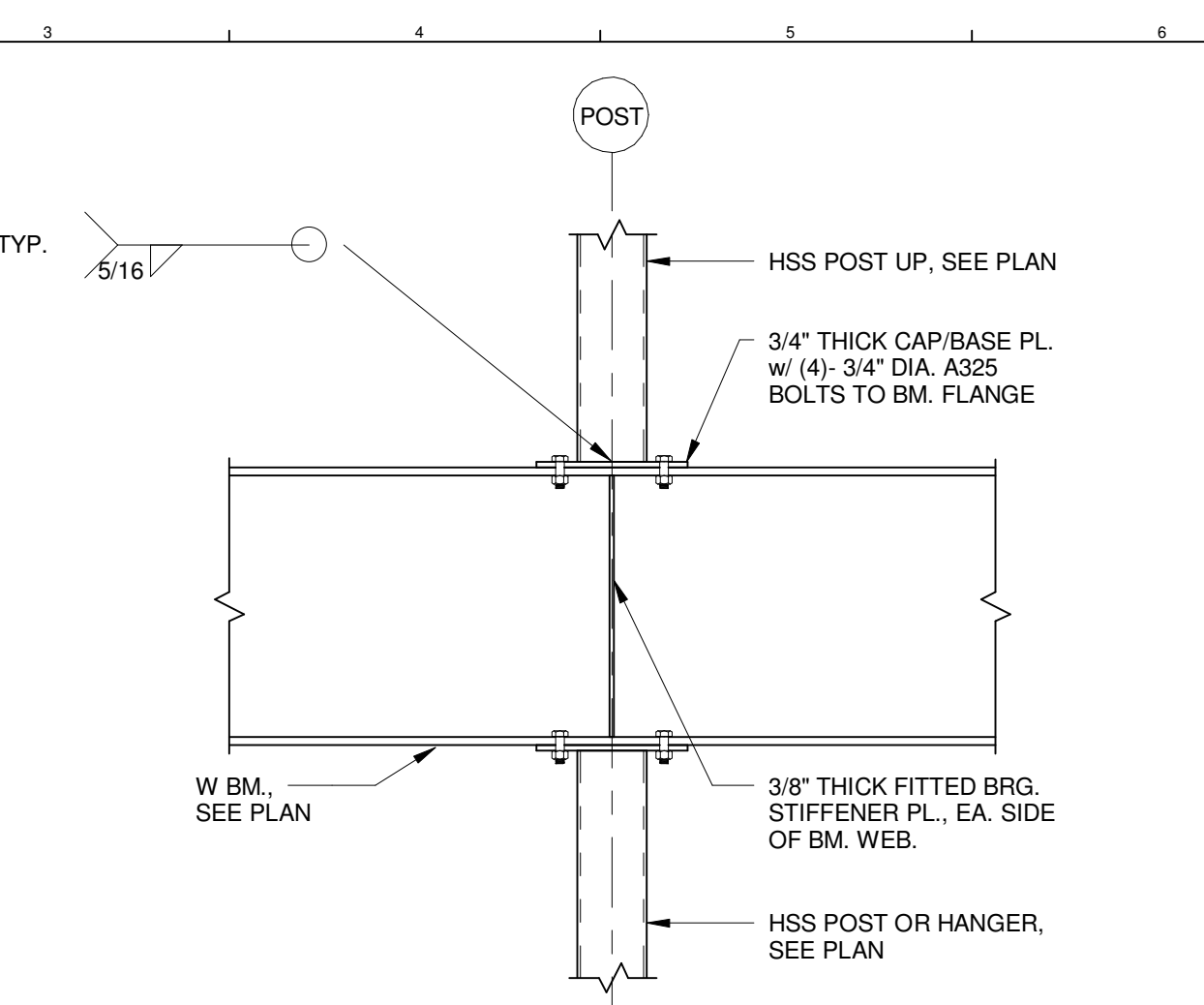
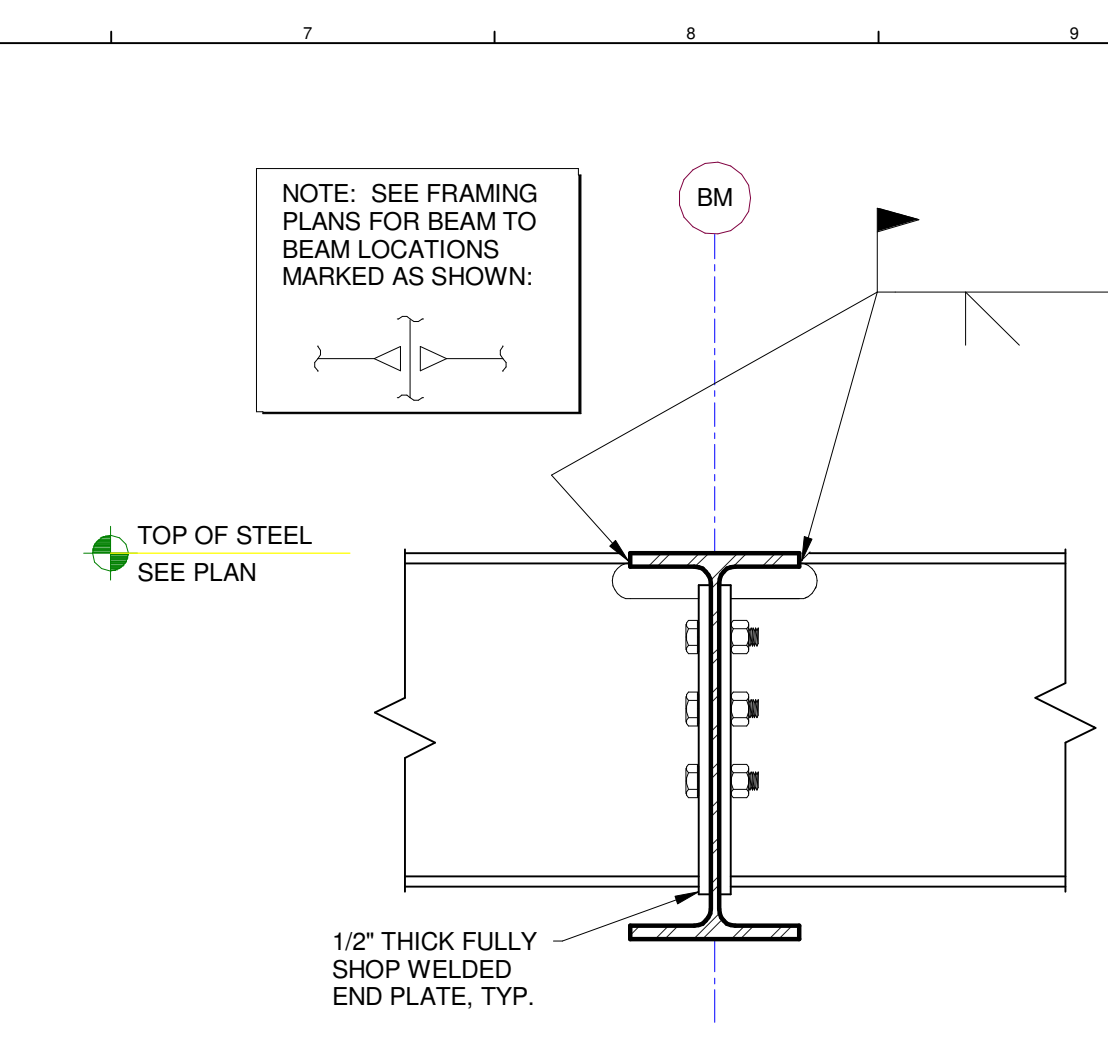


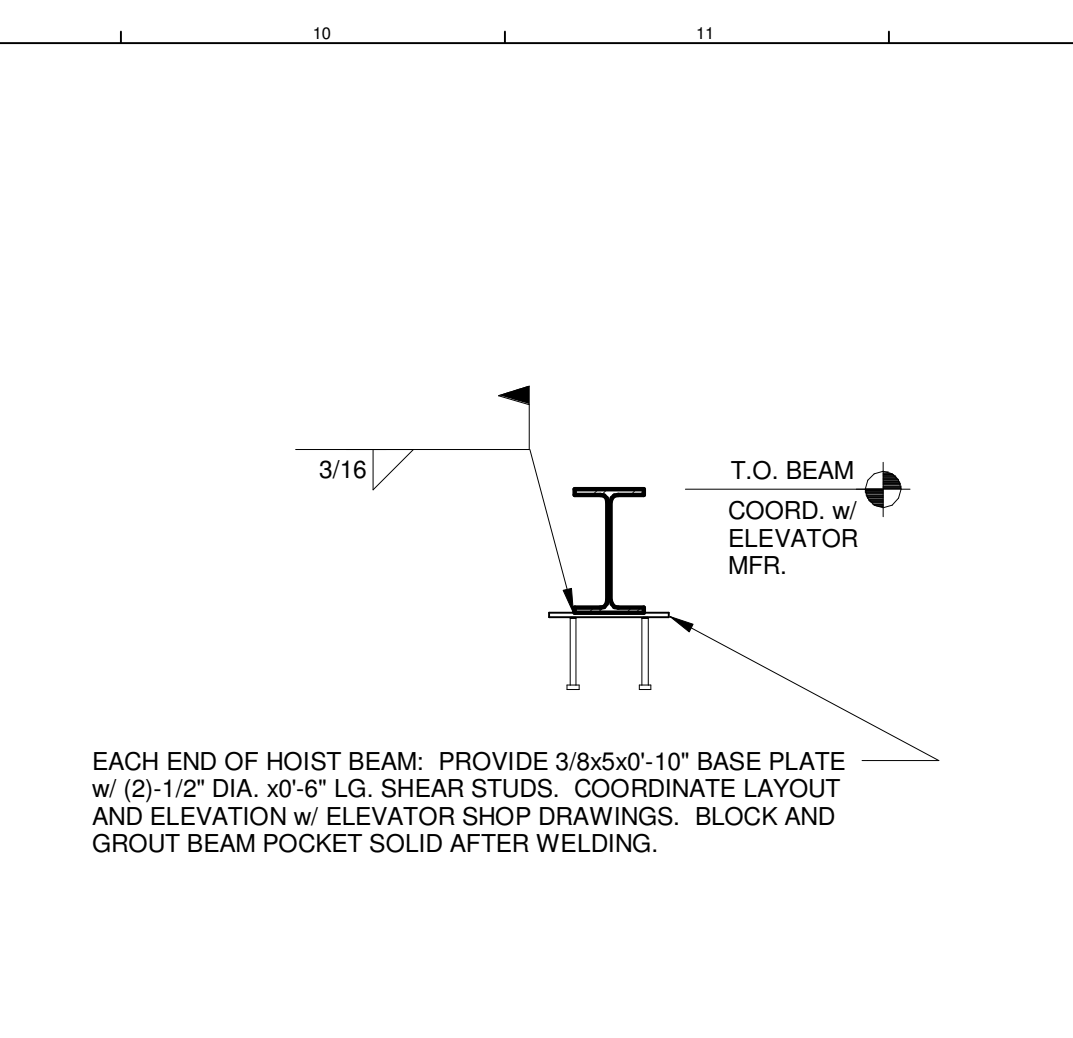
**K1 TYPICAL CANT BEAM SPLICE**  
3/4" = 1'-0"



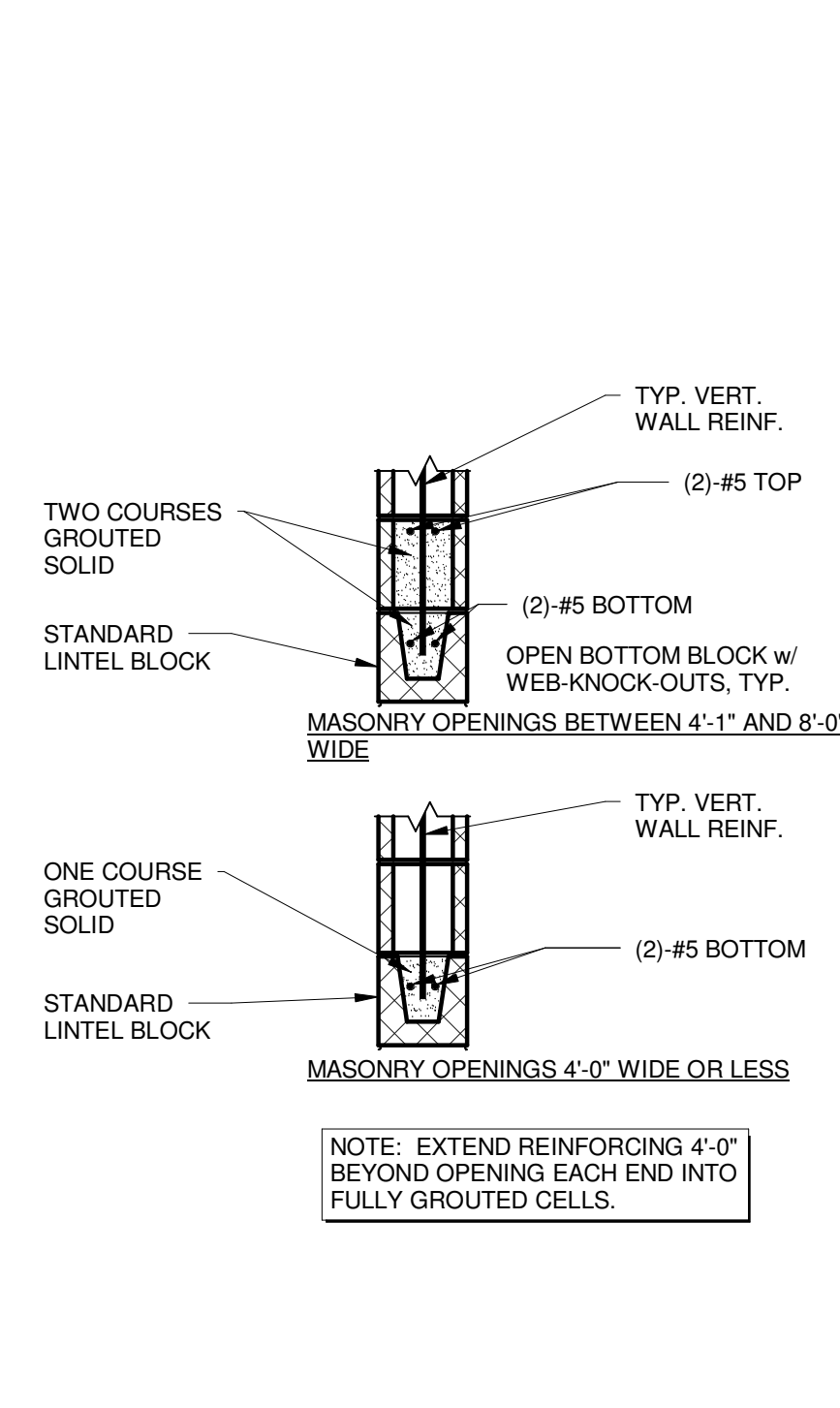
**K3 TYPICAL POST UP POST DOWN**  
3/4" = 1'-0"



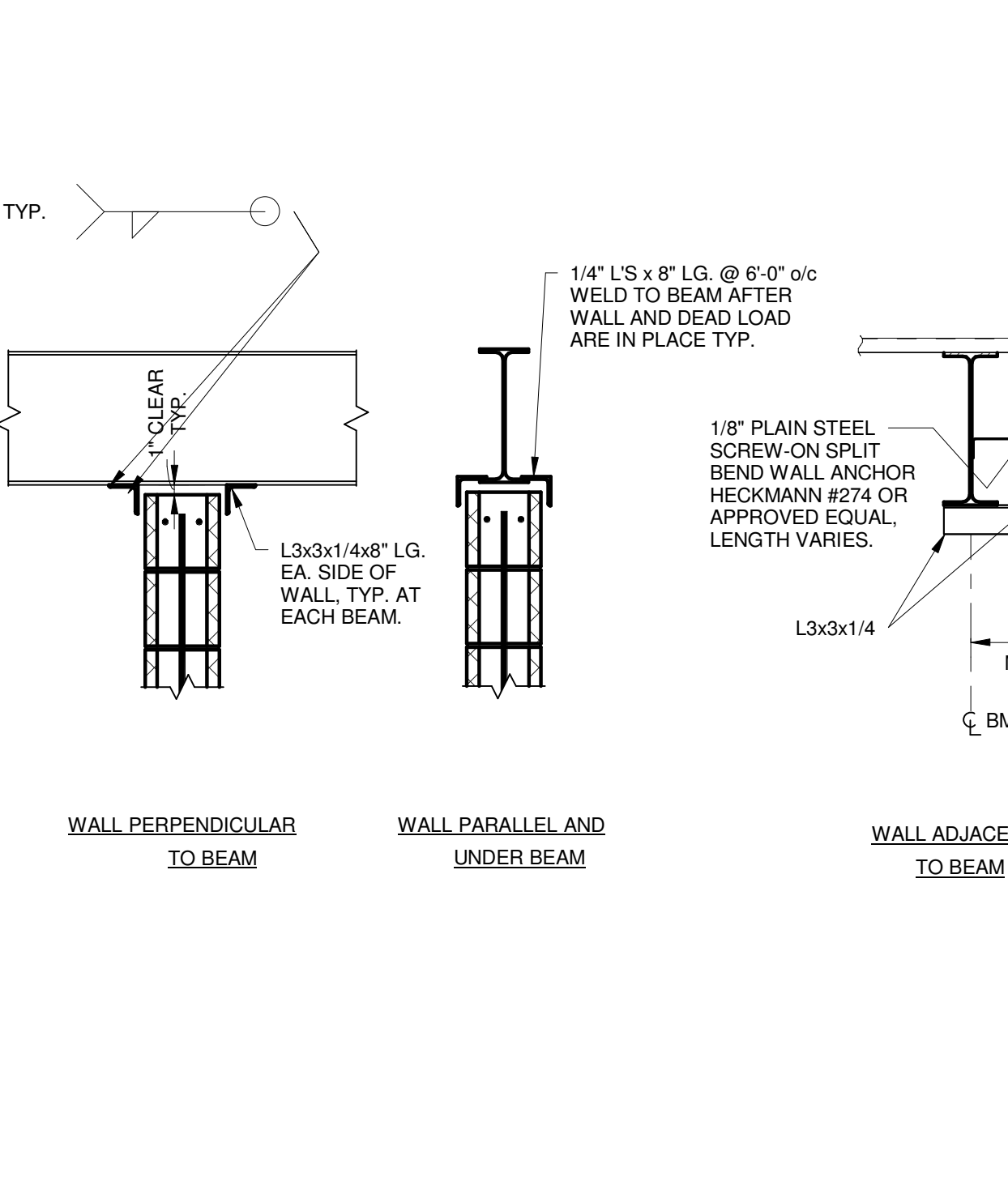
**K6 TYPICAL GRAVITY OUTRIGGER AT W BEAM**  
1 1/2" = 1'-0"



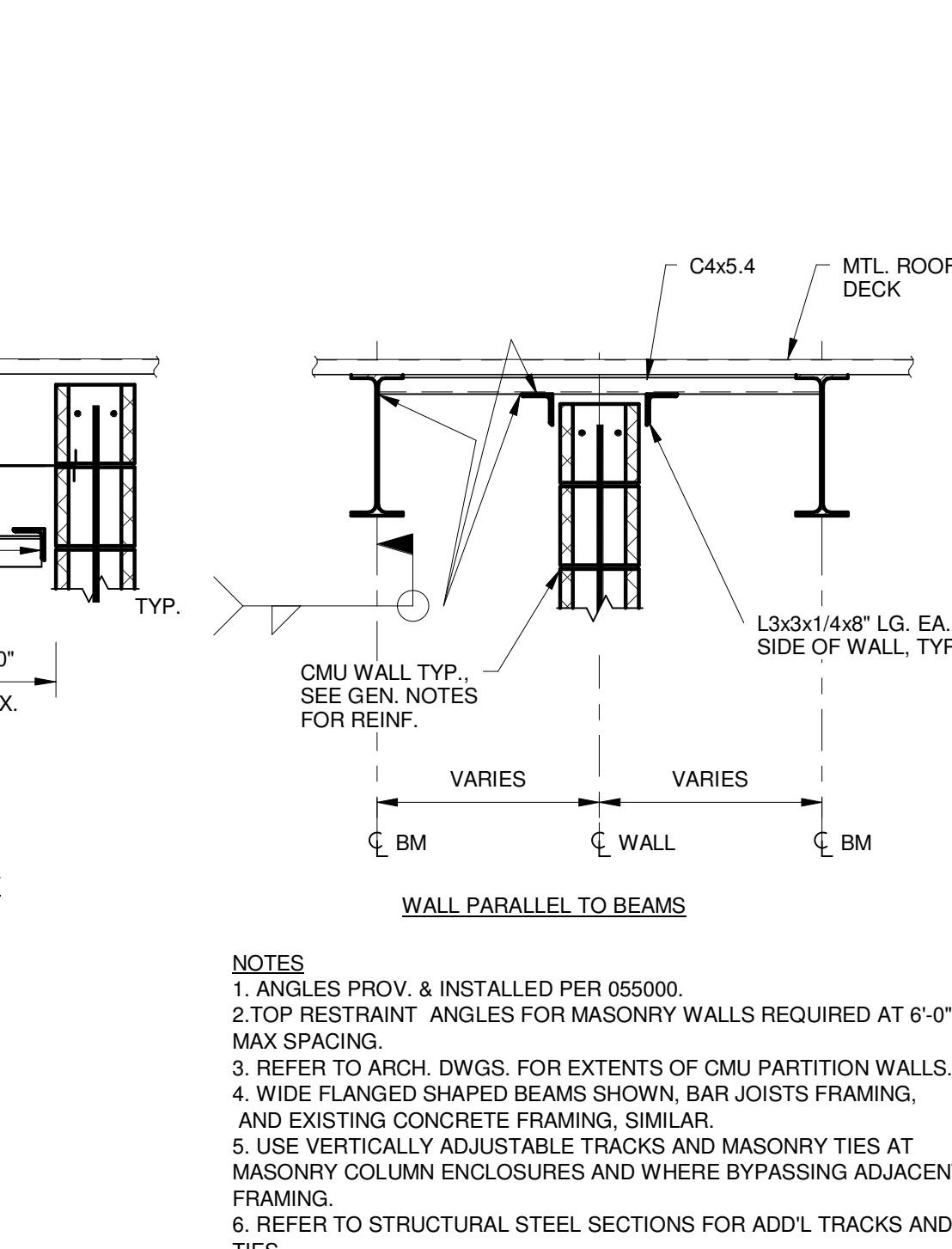
**K9 ELEVATOR HOIST BEAM**  
3/4" = 1'-0"



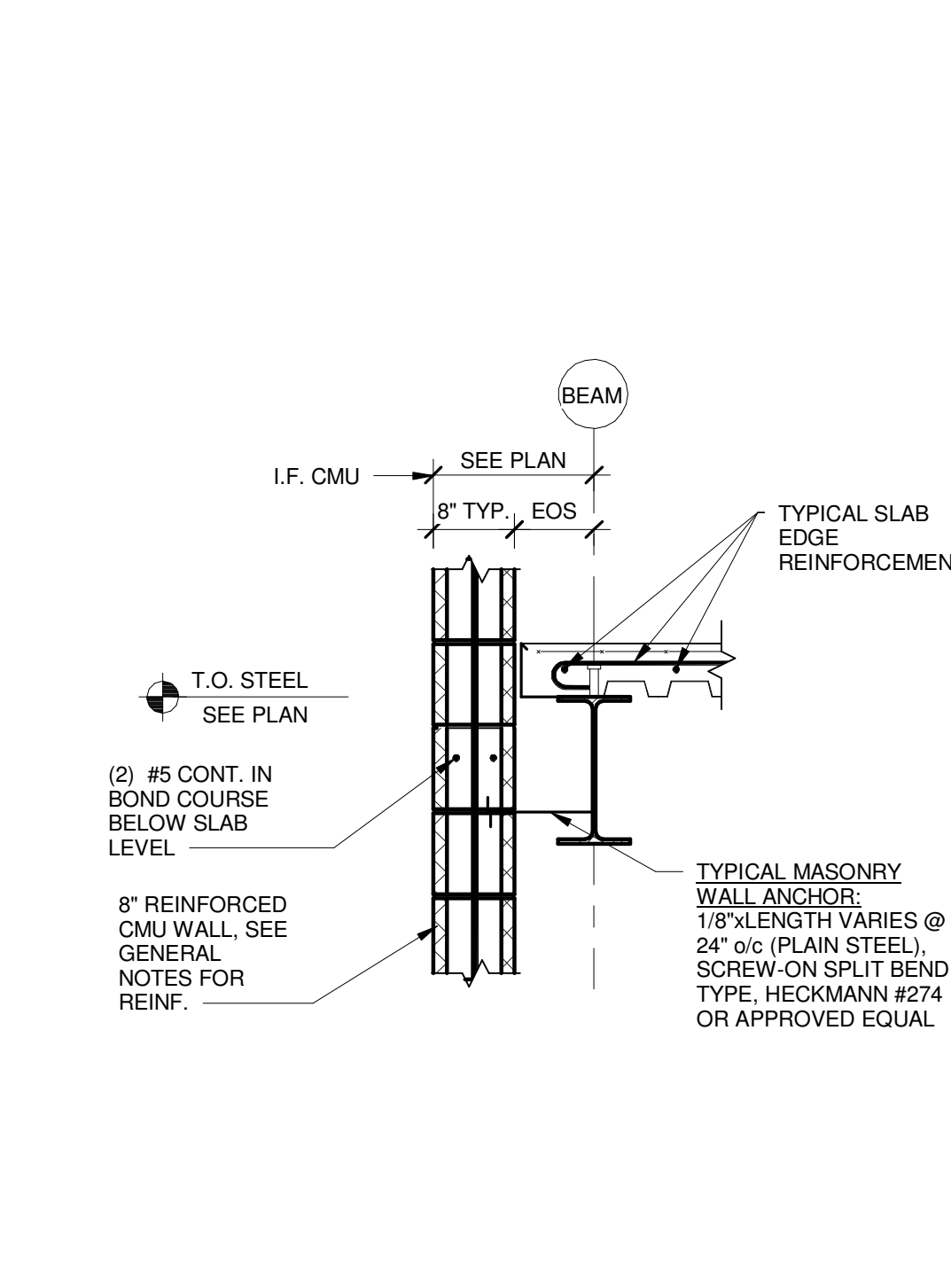
**F1 TYP. REINF. AT CMU OPENINGS**  
3/4" = 1'-0"



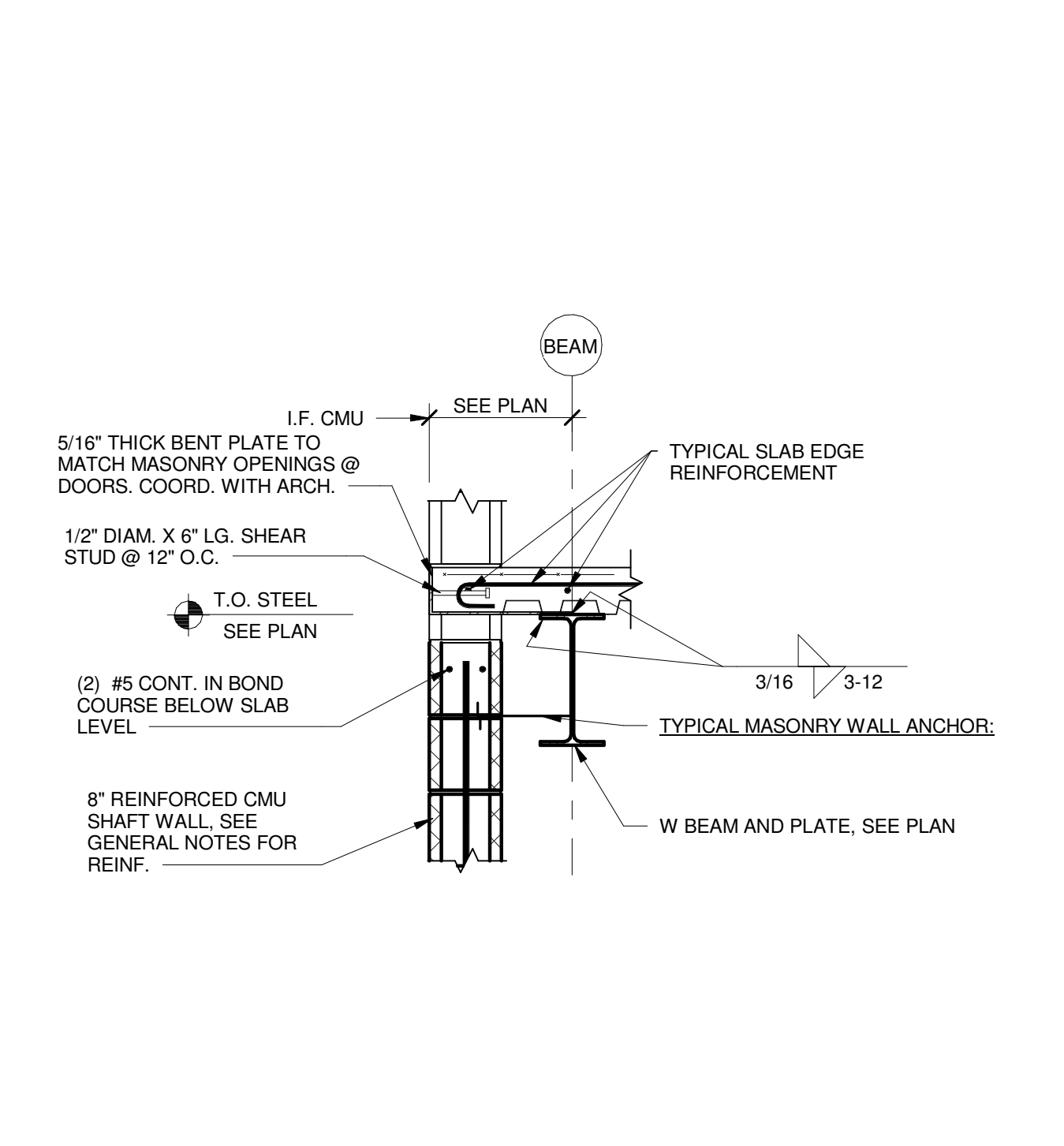
**F3 TYP. CMU WALL LATERAL RESTRAINTS**  
3/4" = 1'-0"



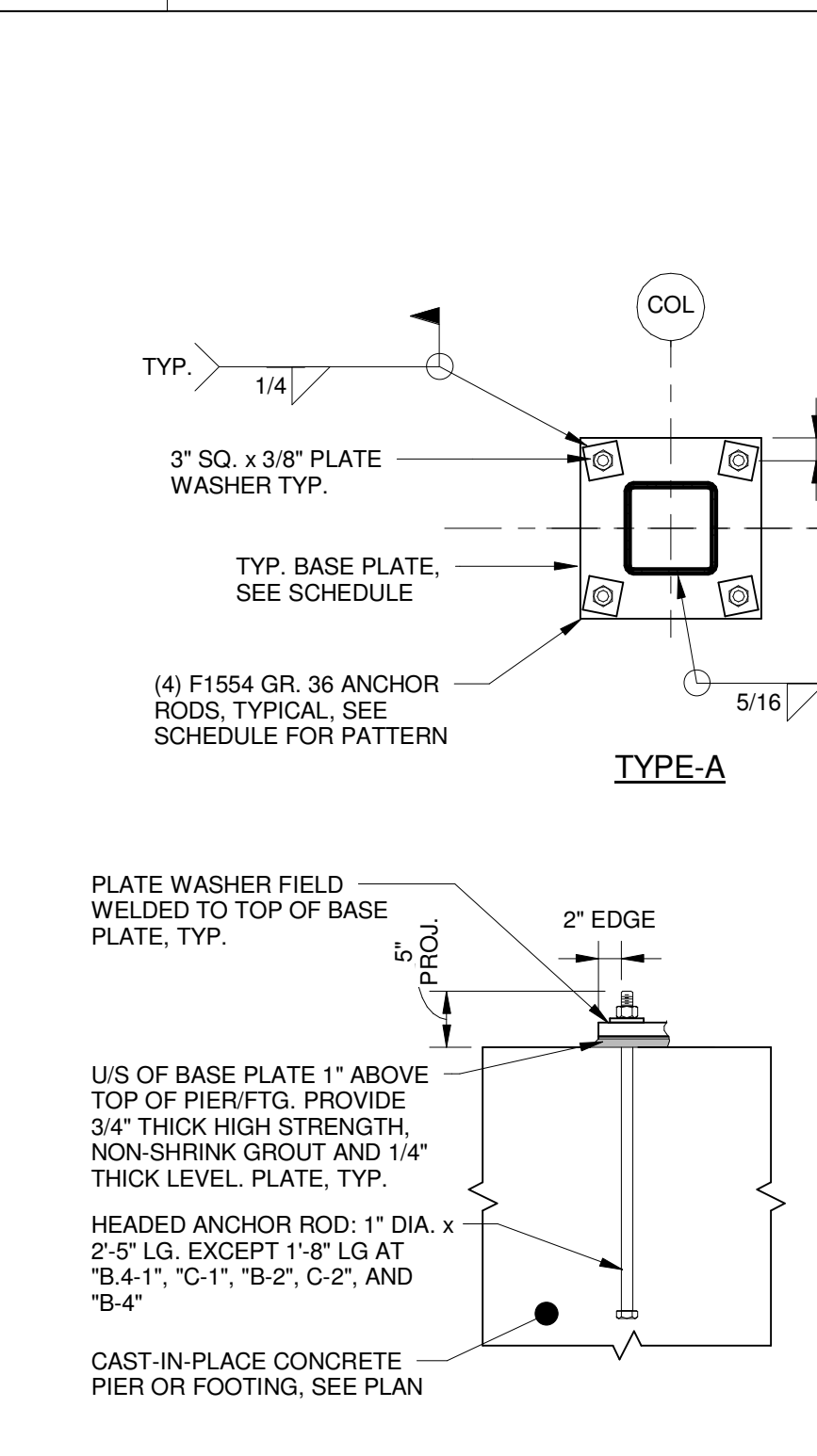
**F9 TYPICAL SLAB EDGE AT CMU SHAFT**  
3/4" = 1'-0"



**F12 TYPICAL SLAB EDGE AT DOOR THRESHOLD**  
3/4" = 1'-0"



**F16 TYPICAL BEAM BEARING AT CMU**  
3/4" = 1'-0"



**A1 TYPICAL BASE PLATE AND ANCHOR RODS**  
3/4" = 1'-0"

BASE PLATE & ANCHOR ROD SCHEDULE (U.N.O.)		
COLUMN	BASE PLATE	ANCHOR RODS
TYPICAL HSS COLS	TYPE-A 1'-4" SQ. x 1 1/2" THK.	(4) RODS IN A 12" SQUARE PATTERN
HSS- COLS @ C-2 & C-4	TYPE-A 1'-6" SQ. x 1 1/2" THK.	(4) RODS IN A 14" PATTERN
HSS- COLS @ A-LINE AND B.3-5/B.3-9, U.N.O.	TYPE-B 12" x 1'-4" x 1 1/2" THK.	(4) RODS IN A 8" x 1'-0" PATTERN
HSS- COLS @ CORNERS A-1, A.2-5 (OPH) & D-5	TYPE-C 1'-0" SQ. x 1 1/2" THK.	(4) RODS IN A 1" PATTERN AS INDICATED, SEE DET.
W- COLS @ B-5 & C-3-5	TYPE-D.1 1'-2" x 1'-4" x 1 1/2" THK.	(4) RODS IN A 7" SQUARE PATTERN
W- COL @ A.1-3	TYPE-D.2 1'-0" SQ. x 1 1/2" THK.	(4) RODS IN A 5 1/2" x 8" PATTERN
W- COL @ A.9-0.1 & C.8-0.1	TYPE-E 8'x1'-2" x 1 1/2" THK.	(4) EXPANSION ANCHORS 4" x 10" PATTERN

0	ISSUED FOR BID	06 JUNE 2016
REV.	DESCRIPTION	DATE
<b>WBRC</b> ARCHITECTS • ENGINEERS WWW.WBRCAE.COM BANGOR, MAINE 207-947-4511 PORTLAND, MAINE 207-828-4511 SARASOTA, FLORIDA 941-556-0757		
<b>ASYLUM</b>		
<b>TYPICAL FRAMING SECTIONS AND DETAILS</b>		
SHEET TITLE:		
WBRC CAD FILE: C:\Users\jrb\Documents\407110 - ASYLUM DANCE CLUB - STRUCT - 30666.rvt		
PROJECT No: 4071.10	GRAPHIC SCALE: 0" = 1"	
SCALE: As indicated	SHEET No. S-501	
PROJECT MANAGER: JRB	DRAWN BY: ADG/RAD/JHW	
CHECKED BY: JPC		