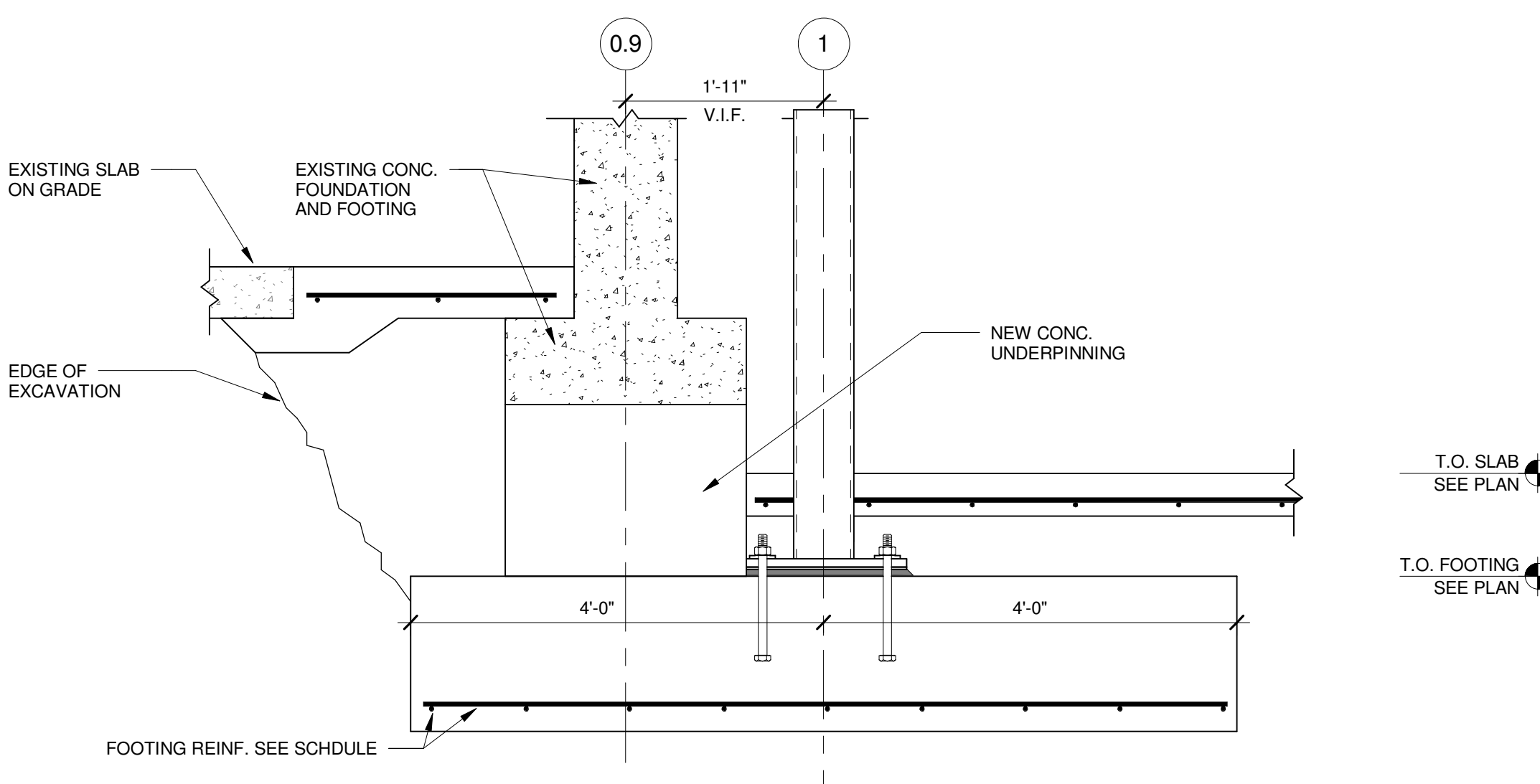
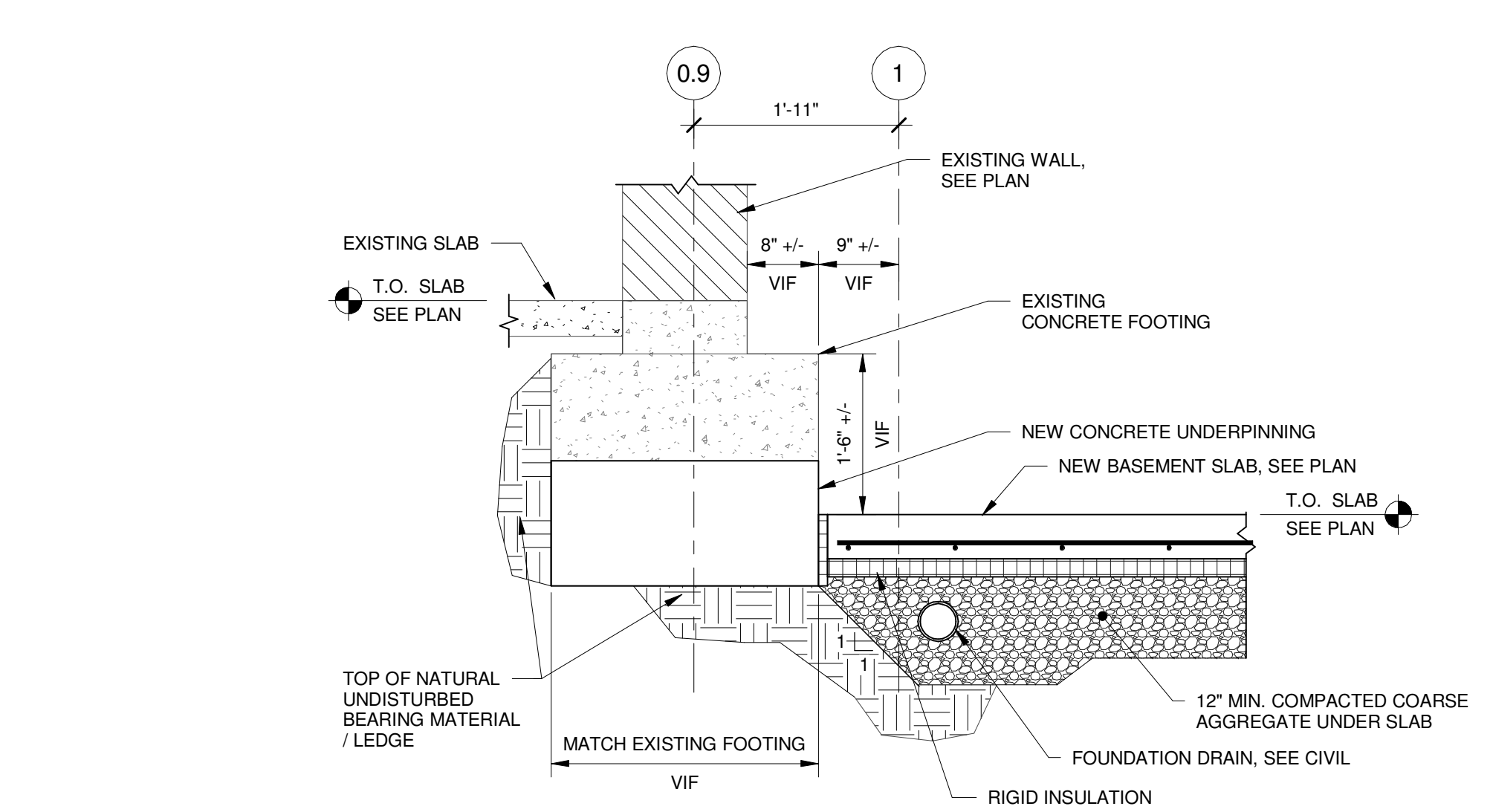


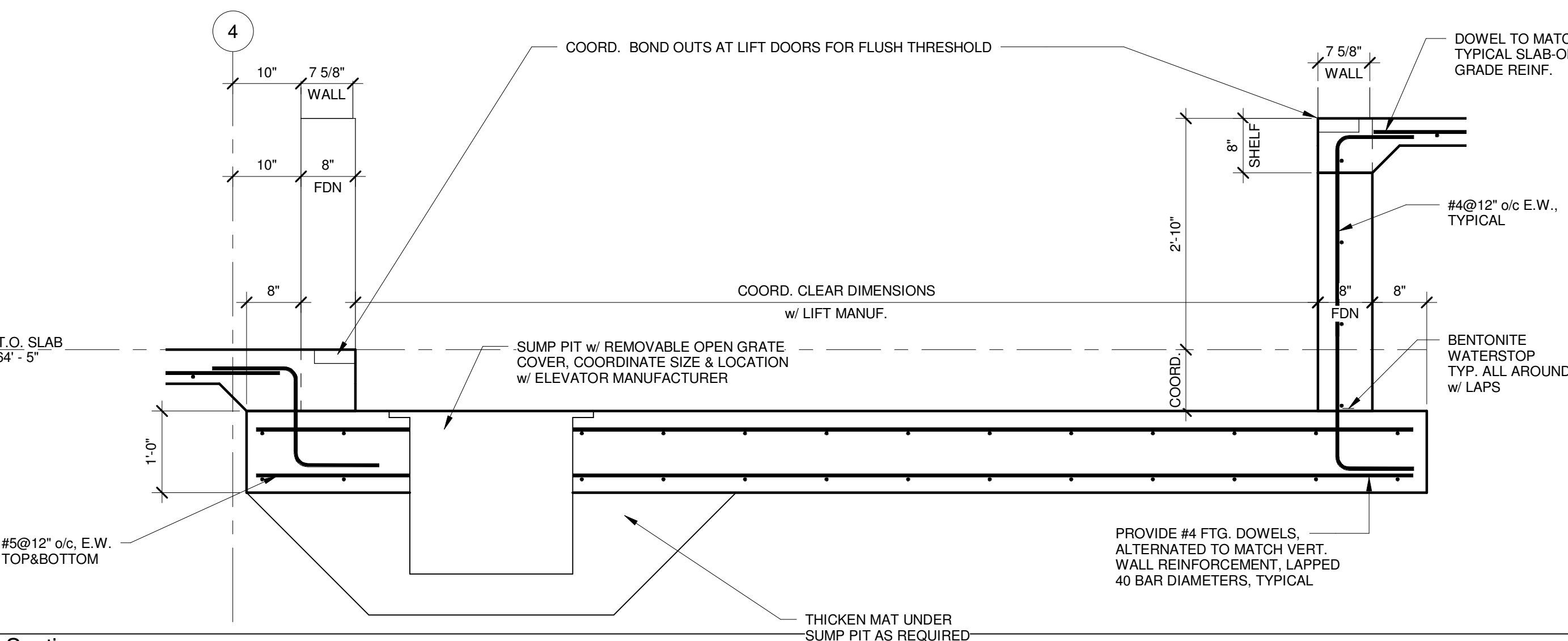
K1 SECTION
3/4" = 1'-0"



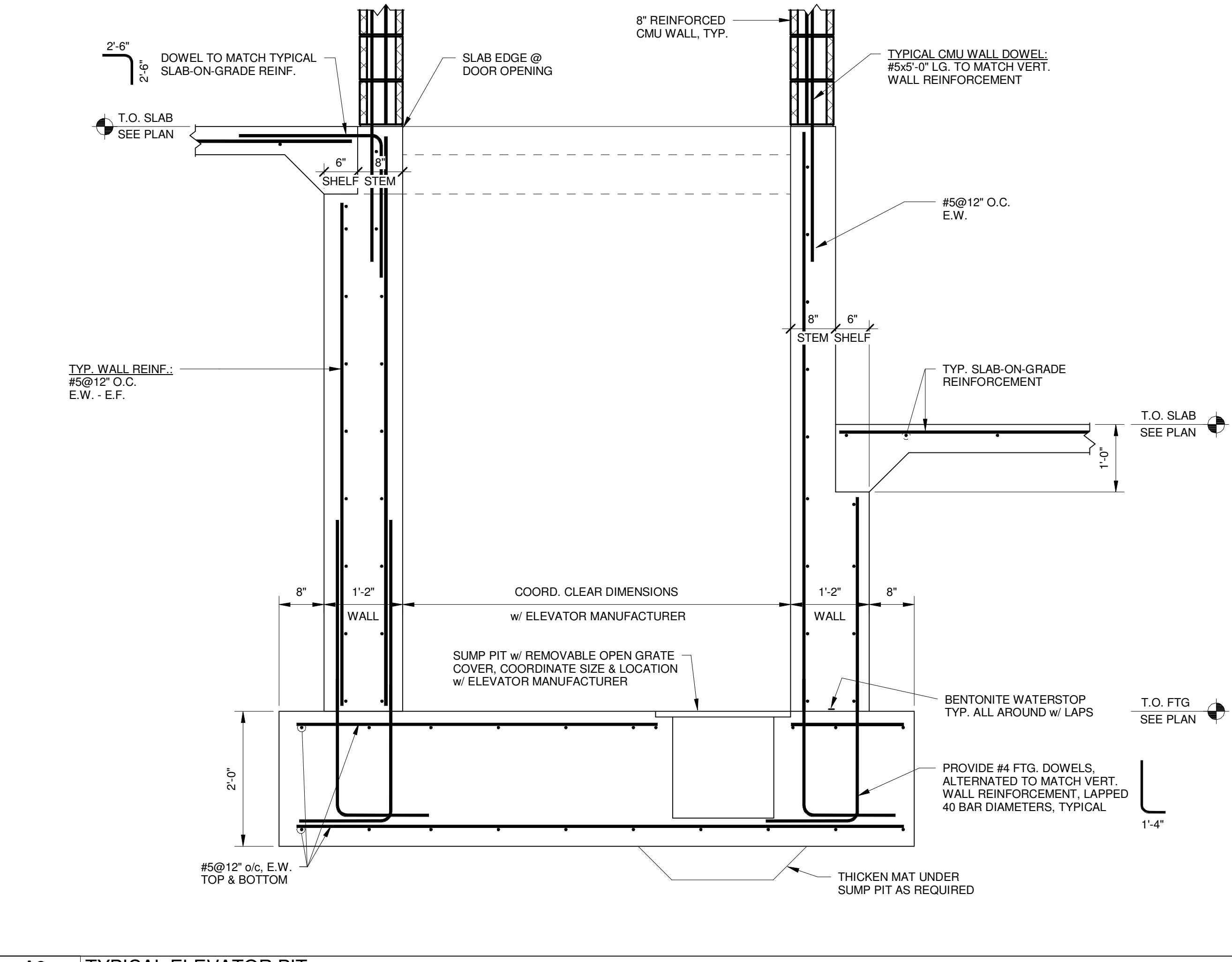
K7 SECTION
3/4" = 1'-0"



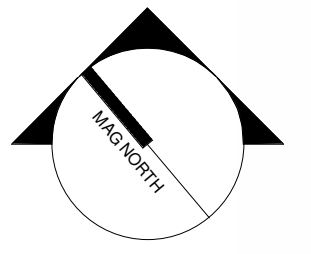
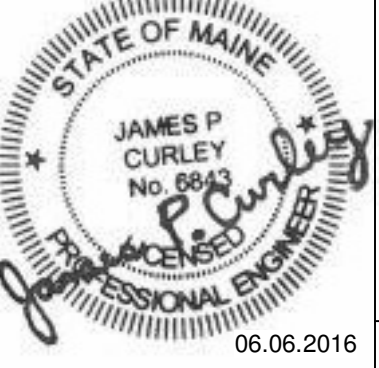
K13 TYPICAL CONCRETE UNDERPIN AT EXISTING FOUNDATION WALL
3/4" = 1'-0"



A1 Lift Section
3/4" = 1'-0"



A9 TYPICAL ELEVATOR PIT
3/4" = 1'-0"

0	ISSUED FOR BID	06 JUNE 2016
REV.	DESCRIPTION	DATE
 		
PROJECT NORTH		
WBRC ARCHITECTS • ENGINEERS WWW.WBRCAE.COM BANGOR, MAINE 207-947-4511 PORTLAND, MAINE 207-838-4511 SARASOTA, FLORIDA 941-356-0757		
PROJECT: ASYLUM		
SHEET TITLE: FOUNDATION SECTIONS AND DETAILS		
WBRC CAD FILE: C:\Users\jrb\Documents\40710 - ASYLUM DANCE CLUB - S1\PROJECT_060616.rvt		
PROJECT No: 4071.10	GRAPHIC SCALE: 0" = 1"	
SCALE: 3/4" = 1'-0"		
PROJECT MANAGER: JRB	DRAWN BY: ADG/RAD/JHW	CHECKED BY: JPC
S-304		