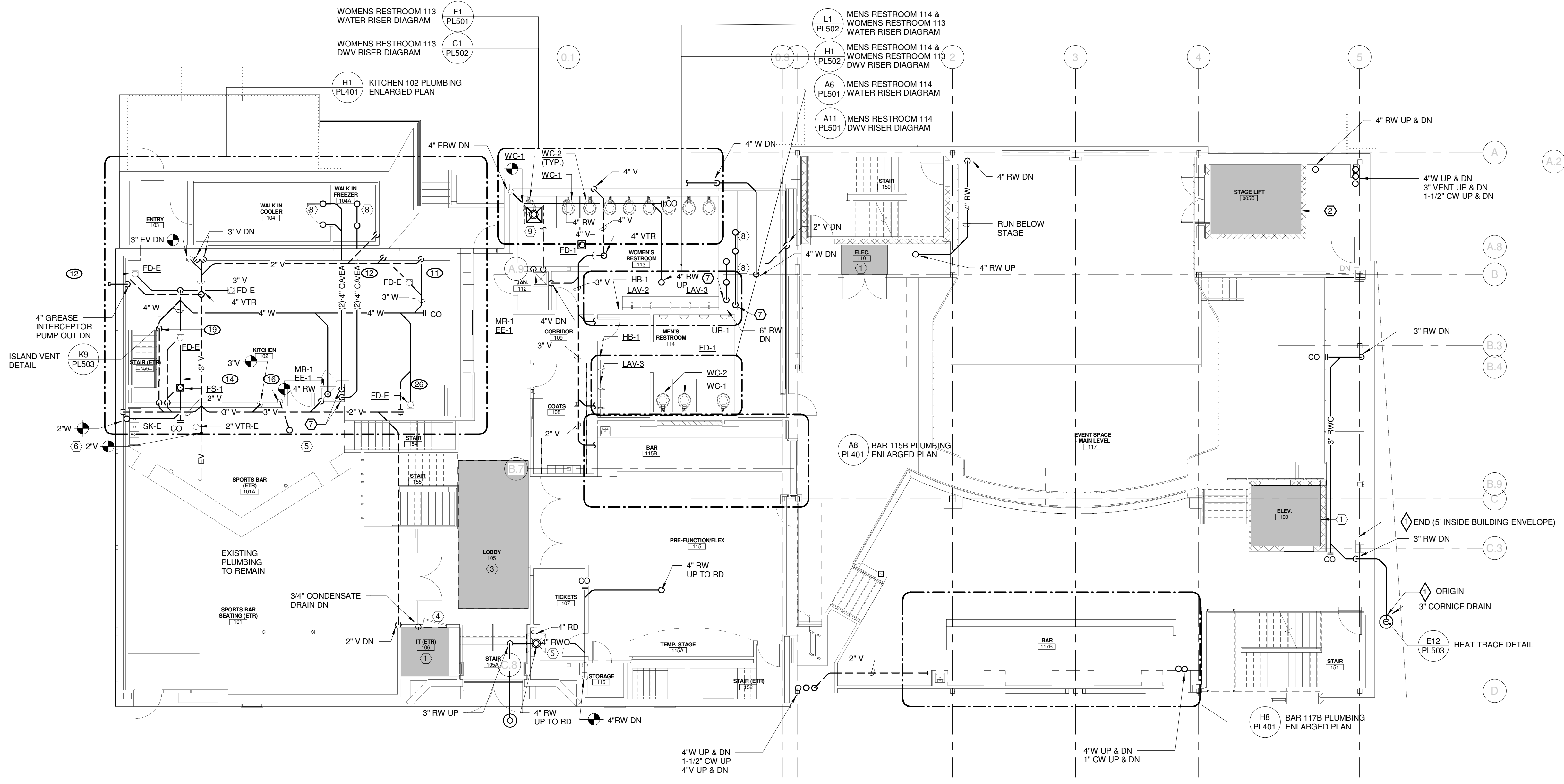


TECHNICAL NOTES:

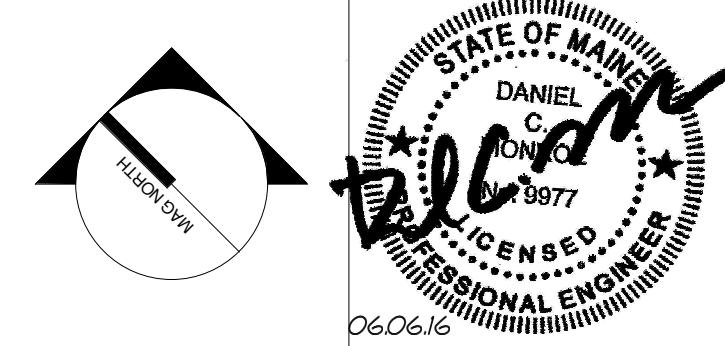
- ① ELECTRICAL SPACE - NO PIPING PERMITTED IN THIS AREA
- ② ELEVATOR SPACE - NO PIPING PERMITTED IN THIS AREA
- ③ SKYLIGHT - NO PIPING PERMITTED IN THIS AREA
- ④ INDOOR EVAPORATOR UNIT - SEE MECH DRAWINGS
- ⑤ 4" RD & RW PIPING TO REPLACE EXTG 4" RD & PIPING
- ⑥ CONNECT EXTG PUMPING VENTS TO NEW VENT
- ⑦ 4"Ø WATER HEATER COMBUSTION AIR & 4"Ø EXHAUST AIR DN
- ⑧ 4"Ø WATER HEATER COMBUSTION AIR & 4"Ø EXHAUST AIR THRU ROOF
- ⑨ EXTG ROOF DRAIN TO REMAIN



NOTE:
 PRIOR TO COMMENCEMENT OF ANY WORK, CONTRACTOR SHALL REVIEW OWNERS ASBESTOS CONTAINING MATERIALS (ACM) REPORT FOR EXTG ROOF SYSTEMS, PIPING SYSTEMS, AND OTHER SUSPICIOUS MATERIALS. COORDINATE REMOVAL AND DISPOSAL OF ALL ACM'S WITH GENERAL CONTRACTOR.

- GENERAL NOTES**
1. RAINWATER PIPING SIZED FOR 1/8"Ø MIN. PITCH.
 2. SANITARY DWV PIPING SIZED FOR 1/4"Ø MIN PITCH.
 3. EXTG BUILDING STRUCTURE, RAINWATER & SEWER ARE COMBINED SYSTEMS PER CITY OF PORTLAND. RAINWATER & SEWER ARE SEPERATE SYSTEMS AT NEW BUILDING ADDITION.

REV.	DESCRIPTION	DATE
0	ISSUED FOR BID	06 JUNE 2016



WBRC
 ARCHITECTS ENGINEERS
 WWW.WBRCAE.COM
 BANGOR, MAINE 207-947-4511
 PORTLAND, MAINE 207-828-4511
 SARASOTA, FLORIDA 941-556-0757

ASYLUM

FIRST FLOOR PLUMBING PLANS

SHEET TITLE:

WBRC CAD FILE: 407110 - ASYLUM DANCE CLUB - MECH-LRVT

PROJECT No. 4071.10 GRAPHIC SCALE: 0" 1"

SCALE: 1/8" = 1'-0"

PROJECT MANAGER: JRB SHEET No. PL102

DRAWN BY: CGB

CHECKED BY: DMON

6/3/2016 4:19:45 PM
 C:\Users\courmey\Bunker Documents\407110 - ASYLUM DANCE CLUB - MECH_courmey\bunker.rvt