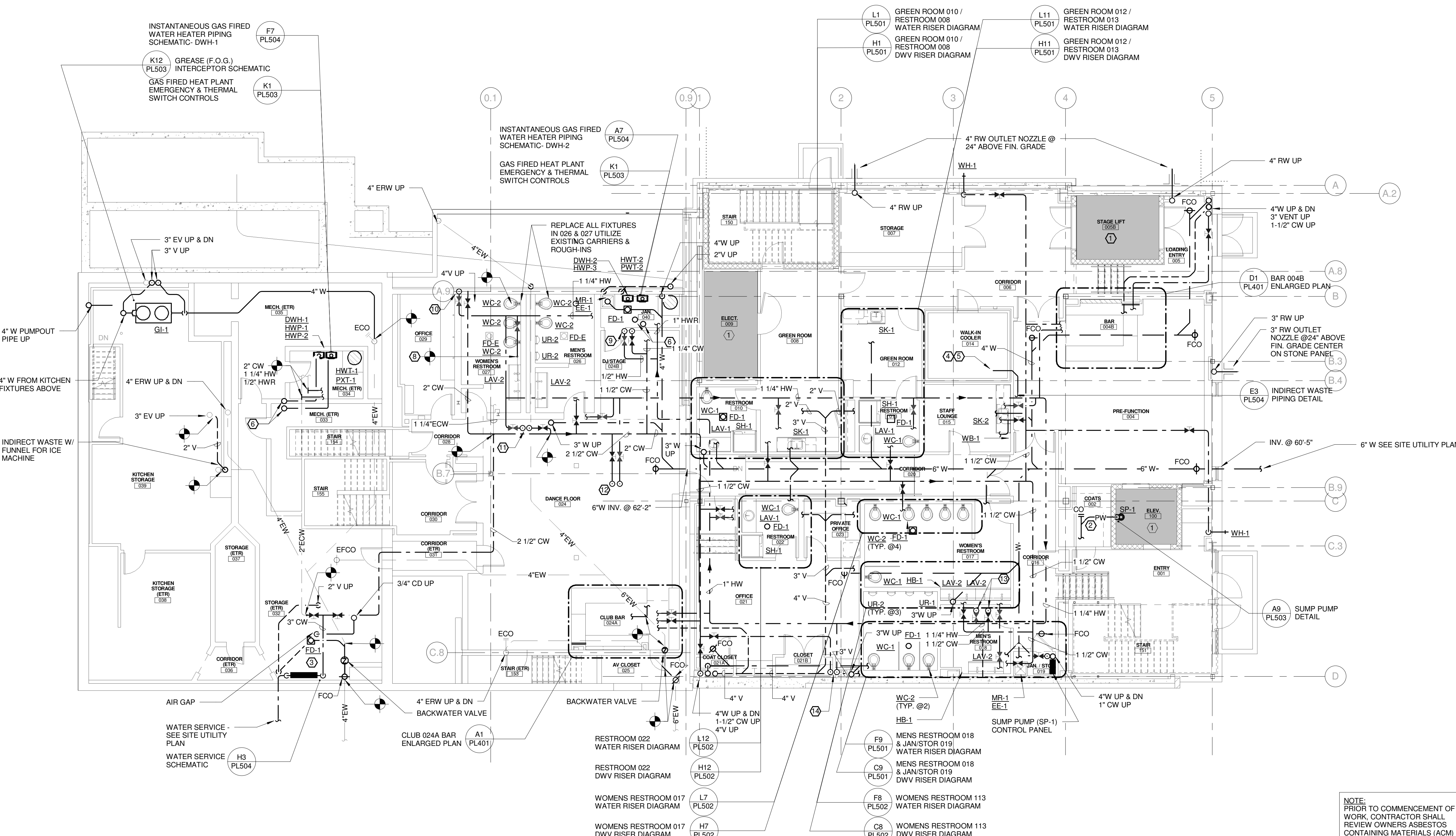


TECHNICAL NOTES:

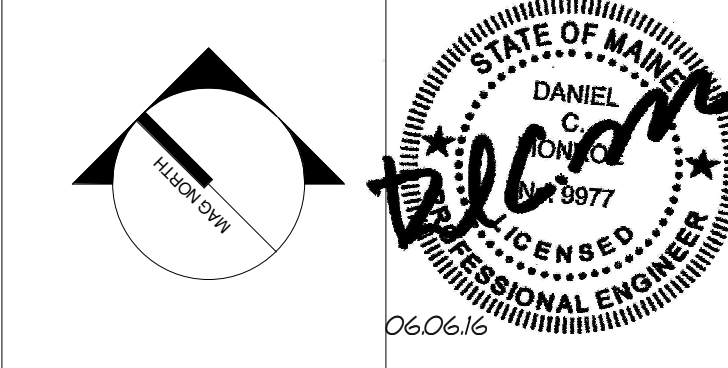
- 1 ELECTRICAL SPACE - NO PIPING PERMITTED IN THIS AREA
- 2 2" PUMPED WASTE TO MR-1 IN JAN / STOR 019. DISCHARGE AT SINK W/ AIR GAP
- 3 REMOVE EXISTING DRAIN & PROVIDE FLOOR DRAIN (FD-1) & TRAP PRIMER (TP-1) PIPED TO DRAIN
- 4 EVAPORATOR CONDENSATE COORD. LOCATION OF EVAPORATOR W/ FOOD SERVICE VENDOR FOR COND. DRAIN LOCATION
- 5 TERMINATE COND. DRAIN AT SINK DRAIN - SEE DETAIL
- 6 4" WATER HEATER COMBUSTION AIR & EXHAUST AIR UP
- 7 NOT USED
- 8 1/2" HW - CONNECT TO EXTG HW (MENS 026 & WOMENS 027)
- 9 1 1/2" CW & 3/4" HW UP TO WOMENS 113 & MENS 114. SEE L1/PL502
- 10 2" CW & 3/4" HW UP TO JAN 112
- 11 1-1/2" CW & 3/4" HW UP TO MENS 114 & BAR 115B. SEE A6/PL501 & A8/PL401
- 12 3/4" HW & CW UP TO BAR 117C. SEE H8/PL401
- 13 1/2" CW & HW UP TO BAR 117C. SEE H8/PL401 & A8 PL401



NOTE:
PRIOR TO COMMENCEMENT OF ANY WORK, CONTRACTOR SHALL REVIEW OWNERS ASBESTOS CONTAINING MATERIALS (ACM) REPORT FOR EXTG ROOF SYSTEMS, PIPING SYSTEMS, AND OTHER SUSPICIOUS MATERIALS. COORDINATE REMOVAL AND DISPOSAL OF ALL ACM'S WITH GENERAL CONTRACTOR.

- GENERAL NOTES**
1. RAINWATER PIPING SIZED FOR 1/8" FT MIN. PITCH.
 2. SANITARY DWV PIPING SIZED FOR 1/4" FT MIN PITCH.
 3. EXTG BUILDING STRUCTURE, RAINWATER & SEWER ARE COMBINED SYSTEMS PER CITY OF PORTLAND. RAINWATER & SEWER ARE SEPERATE SYSTEMS AT NEW BUILDING ADDITION.

REV.	DESCRIPTION	DATE
0	ISSUED FOR BID	06 JUNE 2016



WBRC
ARCHITECTS ENGINEERS
WWW.WBRCAE.COM
BANGOR, MAINE 207-947-4511
PORTLAND, MAINE 207-628-4511
SARASOTA, FLORIDA 941-556-0757

ASYLUM

BASEMENT PLUMBING PLAN

SHEET TITLE:

WBRC CAD FILE: 407110 - ASYLUM DANCE CLUB - MECH-LRV

PROJECT No. 4071.10 GRAPHIC SCALE: 0" 1"

SCALE: 1/8" = 1'-0"

PROJECT MANAGER: JRB SHEET No. **PL101**

DRAWN BY: CGB

CHECKED BY: DMON

6/3/2016 4:19:30 PM C:\Users\courney.bunker\Documents\407110 - ASYLUM DANCE CLUB - MECH_courney.bunker.rvt