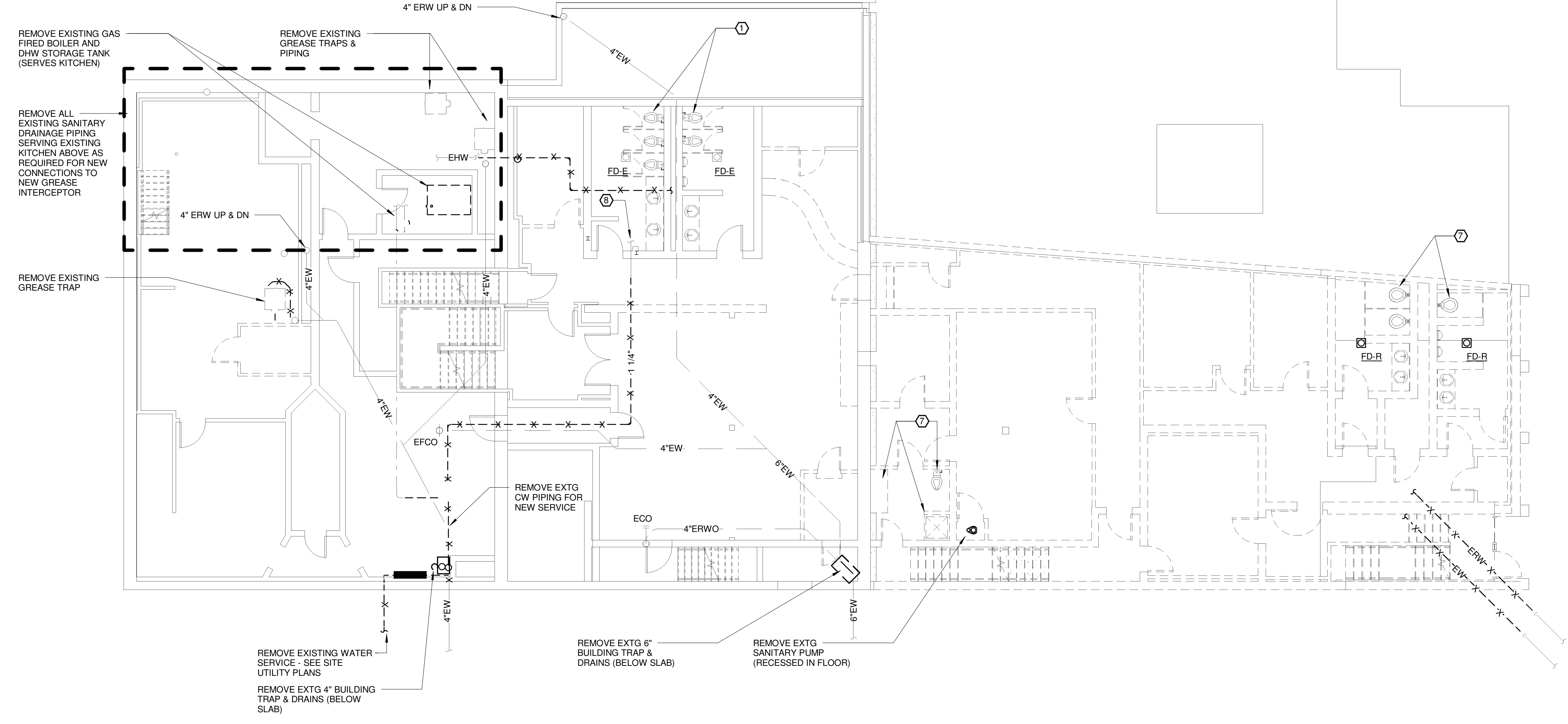


- REMOVAL NOTES:**
- ① REMOVE EXTG PLUMBING FIXTURES AND ASSOCIATED PIPING CONNECTIONS. REFER TO PL101 FOR FIXTURE REPLACEMENT.
  - ② REMOVE EXTG PLUMBING FIXTURE AND ASSOCIATED PIPING. CAP ALL PIPING BEHIND FINISH SURFACES.
  - ③ REMOVE ALL EXTG BAR EQUIPMENT PLUMBING FIXTURES AND ASSOCIATED PIPING. CAP ALL PIPING BEHIND FINISH SURFACES.
  - ④ REMOVE EXISTING GARBAGE DISPOSAL & ADJUST DRAIN PIPING FOR INDIRECT WASTE TO FLOOR DRAIN.
  - ⑤ REMOVE EXTG ROOF DRAIN & PIPING AS REQUIRED FOR NEW
  - ⑥ REMOVE EXTG ABANDONED OPEN DRAIN PIPING & CAP
  - ⑦ REMOVE EXTG PLUMBING FIXTURE & ASSOCIATED PIPING
  - ⑧ EXISTING CW PIPING SERVING EXTG TOILETS, LAVS, & URINALS TO REMAIN. PROVIDE NEW SHUT-OFF VALVES.
  - ⑨ REMOVE ALL EXTG SANITARY WASTE PIPING & EXTG RW PIPING & CAP OUTSIDE OF NEW BUILDING ADDITION

NOTE:  
PRIOR TO COMMENCEMENT OF ANY WORK, CONTRACTOR SHALL REVIEW OWNERS ASBESTOS CONTAINING MATERIALS (ACM) REPORT FOR EXTG ROOF SYSTEMS, PIPING SYSTEMS, AND OTHER SUSPICIOUS MATERIALS. COORDINATE REMOVAL AND DISPOSAL OF ALL ACM'S WITH GENERAL CONTRACTOR.

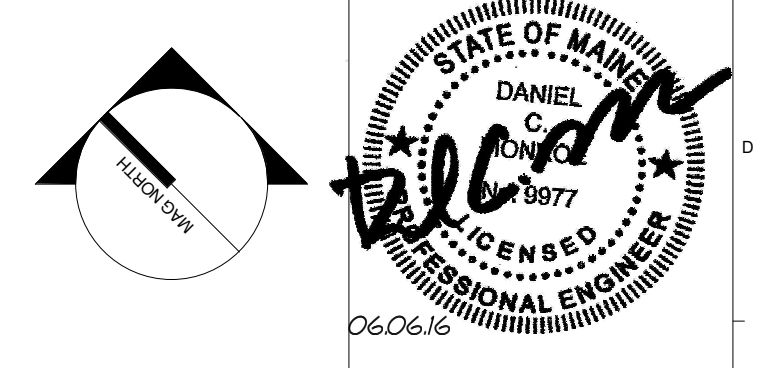
G1 FIRST FLOOR PLUMBING DEMO PLAN  
1/8" = 1'-0"



NOTE:  
PRIOR TO COMMENCEMENT OF ANY WORK, CONTRACTOR SHALL REVIEW OWNERS ASBESTOS CONTAINING MATERIALS (ACM) REPORT FOR EXTG ROOF SYSTEMS, PIPING SYSTEMS, AND OTHER SUSPICIOUS MATERIALS. COORDINATE REMOVAL AND DISPOSAL OF ALL ACM'S WITH GENERAL CONTRACTOR.

A1 BASEMENT PLUMBING DEMO PLAN  
1/8" = 1'-0"

REV.	DESCRIPTION	DATE
0	ISSUED FOR BID	06 JUNE 2016



**WBRC**  
ARCHITECTS ENGINEERS  
WWW.WBRCAE.COM  
BANGOR, MAINE 207-947-4511  
PORTLAND, MAINE 207-828-4511  
SARASOTA, FLORIDA 941-556-0757

PROJECT:  
**ASYLUM**  
BASEMENT & FIRST FLOOR  
PLUMBING DEMO PLANS

SHEET TITLE:

WBRC CAD FILE: 407110 - ASYLUM DANCE CLUB - MECH-LRVT

PROJECT No. 4071.10 GRAPHIC SCALE: 0" 1"

SCALE: 1/8" = 1'-0"

PROJECT MANAGER: JRB SHEET No. PD101

DRAWN BY: CGB

CHECKED BY: DMON

6/3/2016 4:19:15 PM C:\Users\courmey\Documents\407110 - ASYLUM DANCE CLUB - MECH-LRVT\courmey\bunker.rvt