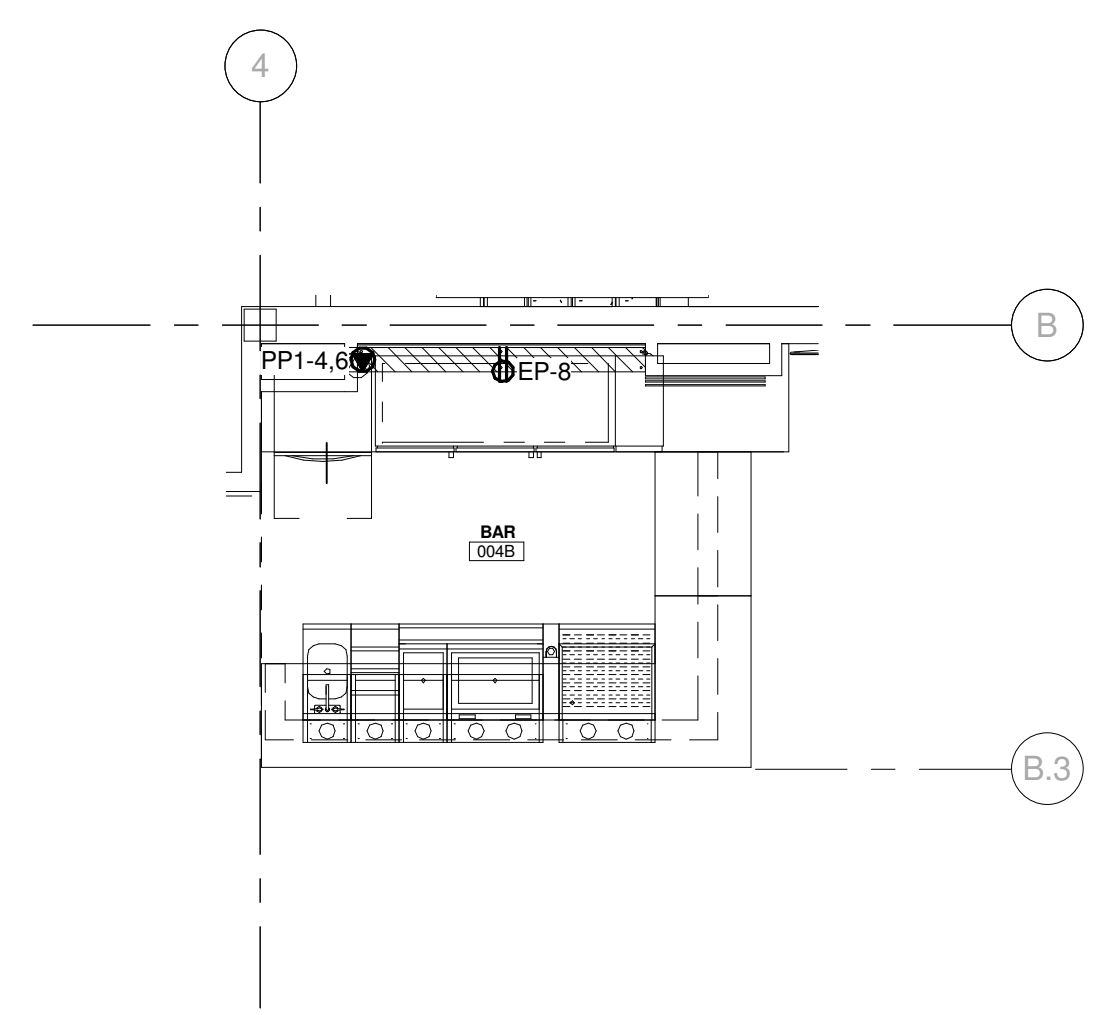
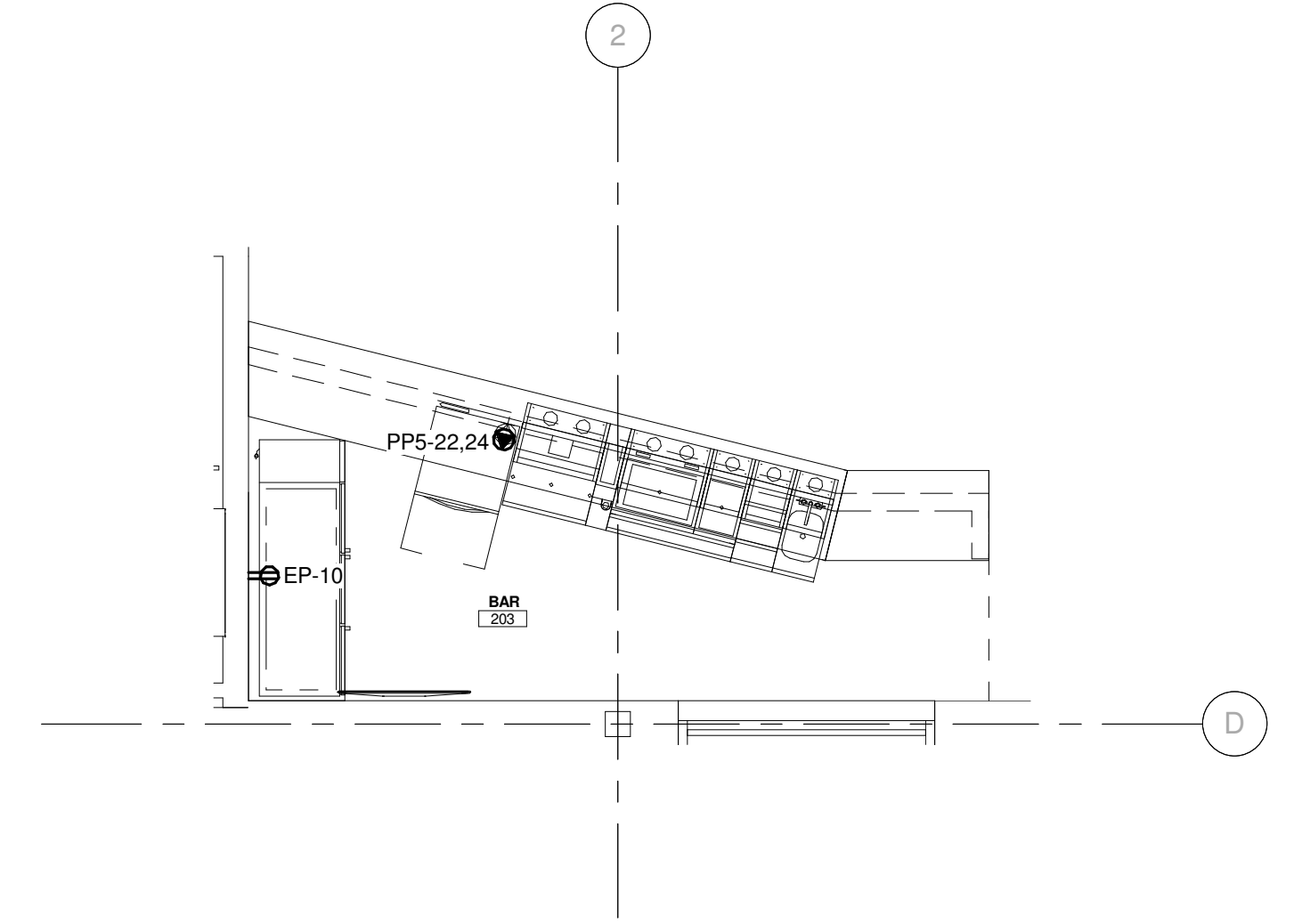


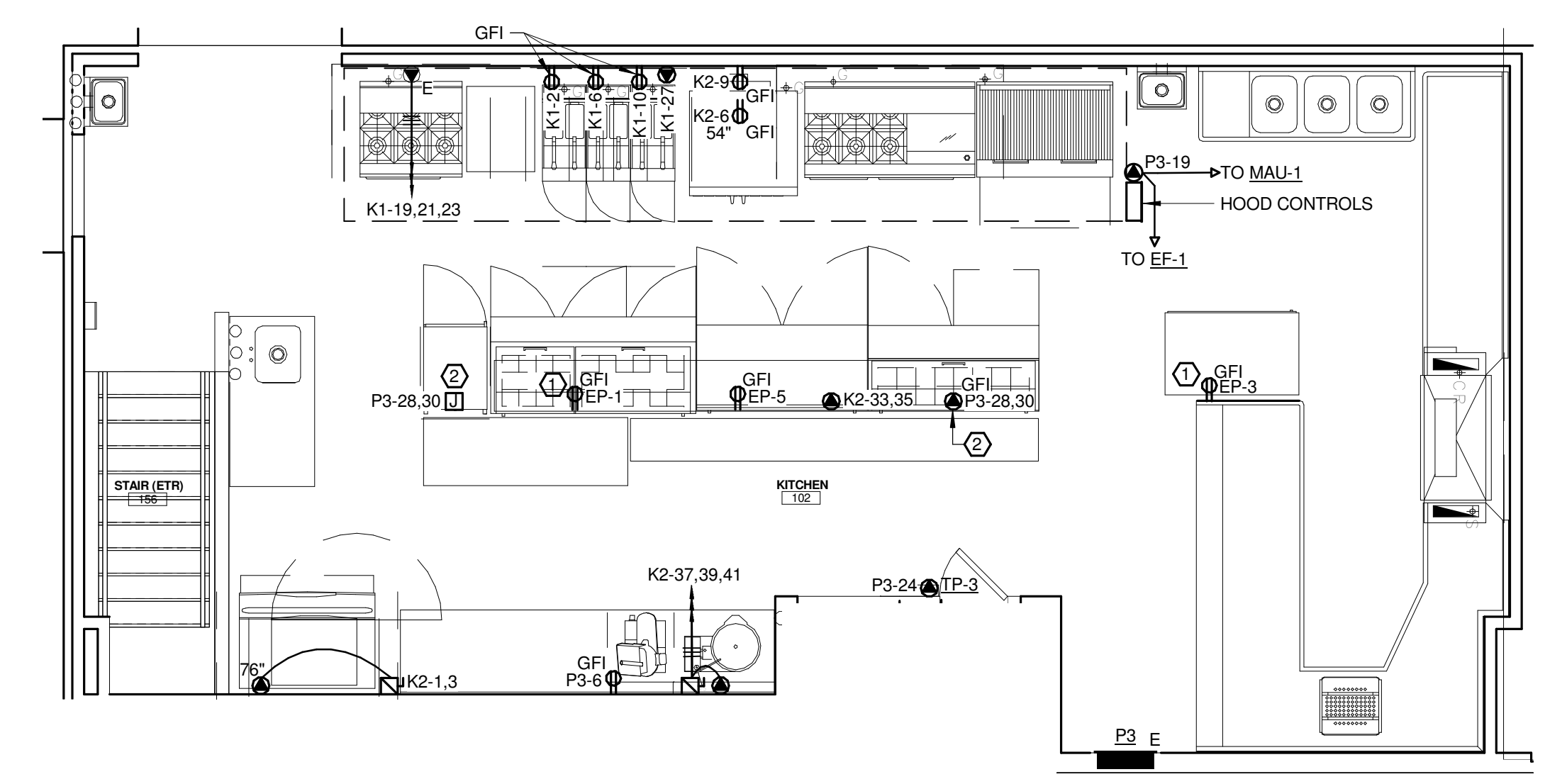
**TECHNICAL NOTES:**  
 (1) PROVIDE 1-GANG WEATHER-PROOF BOX AND COVER AT FLOOR LEVEL. SUPPORT WITH (2) 3/4" CONDUIT COUPLING THROUGH THE FLOOR.  
 (2) DIRECT EQUIPMENT FEED. CONNECT FROM BELOW.



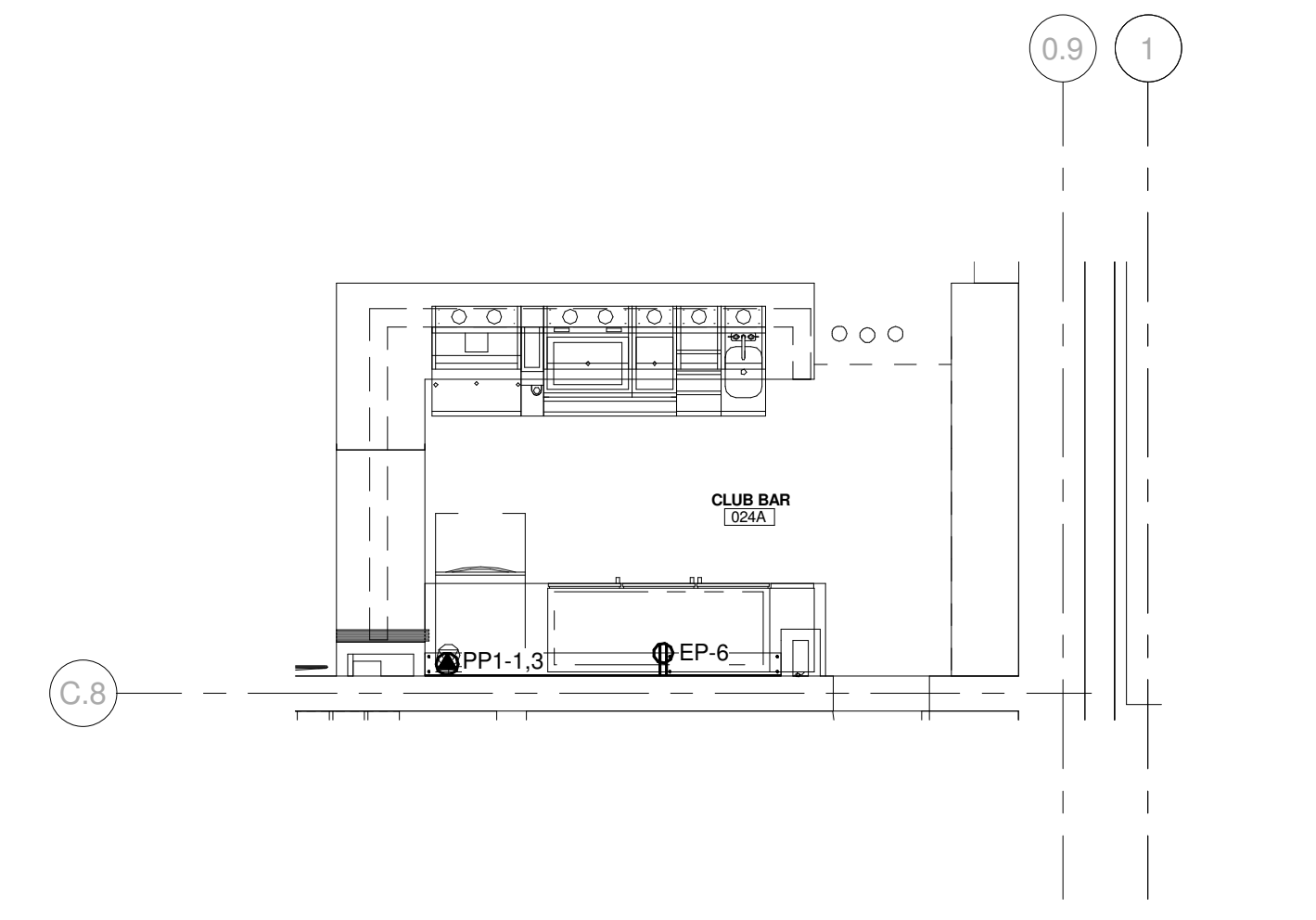
**K10 BAR 004B ELECTRICAL PART PLAN**  
 1/4" = 1'-0"



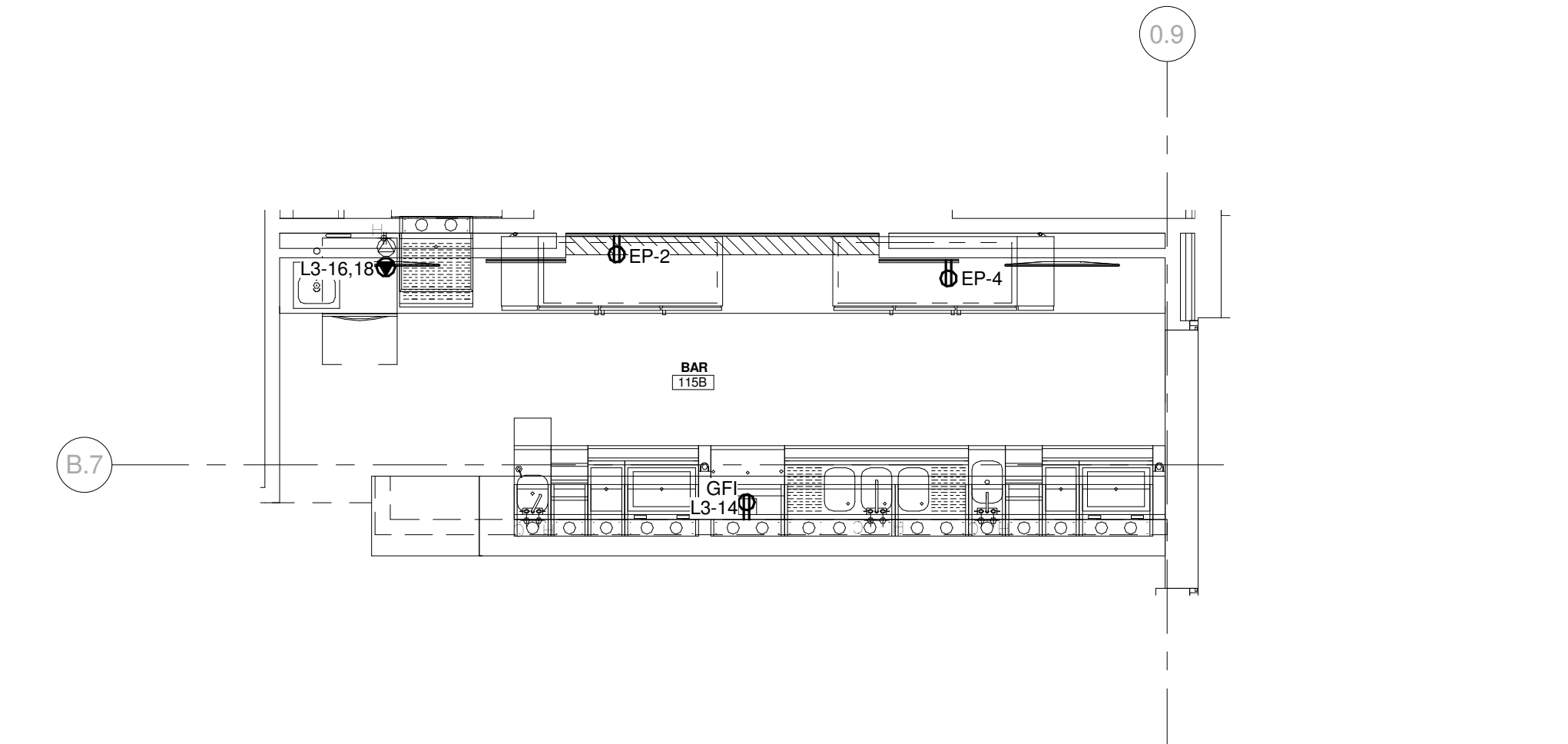
**K6 BAR 203 ELECTRICAL PART PLAN**  
 1/4" = 1'-0"



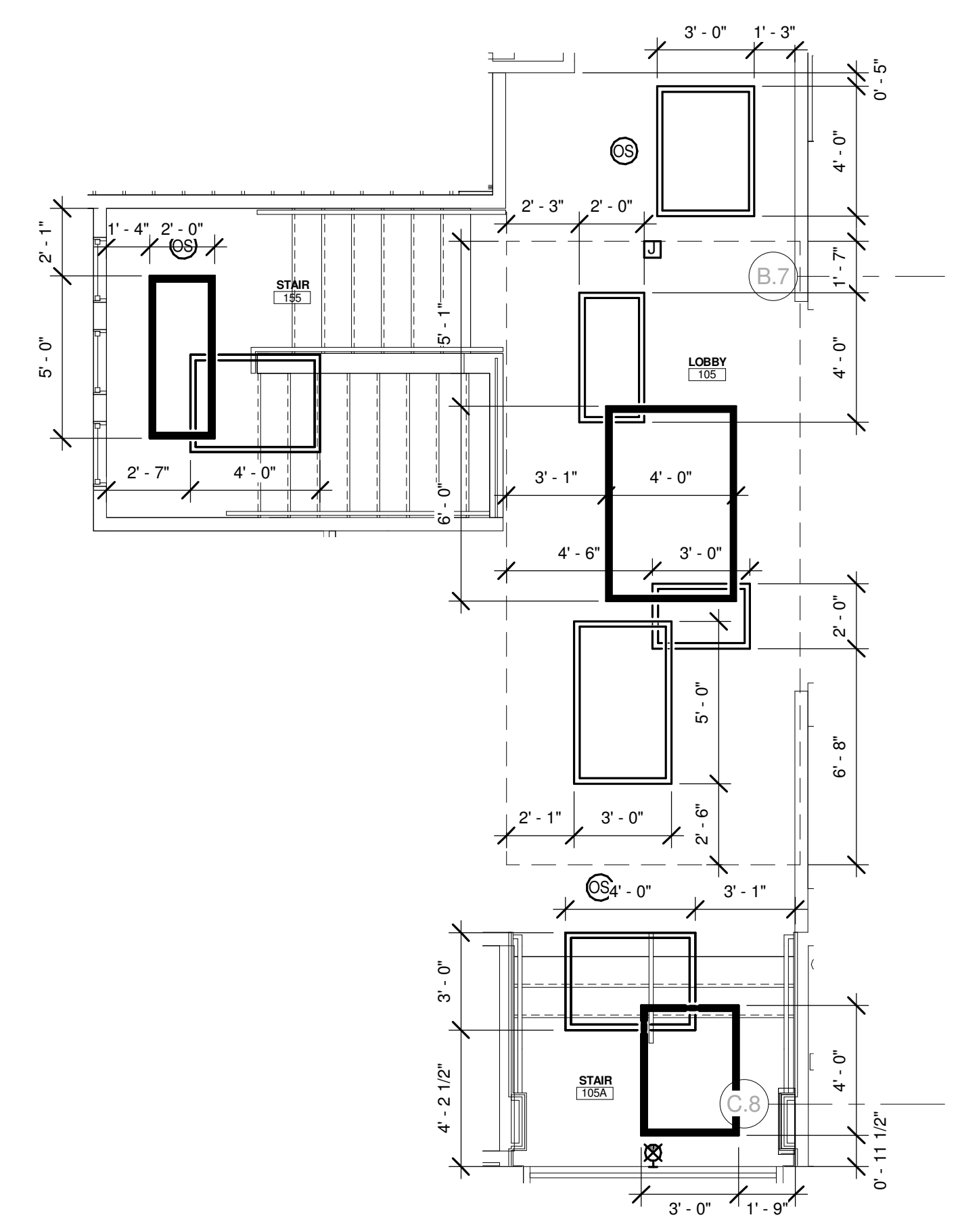
**H10 KITCHEN 102 ELECTRICAL PART PLAN**  
 1/4" = 1'-0"



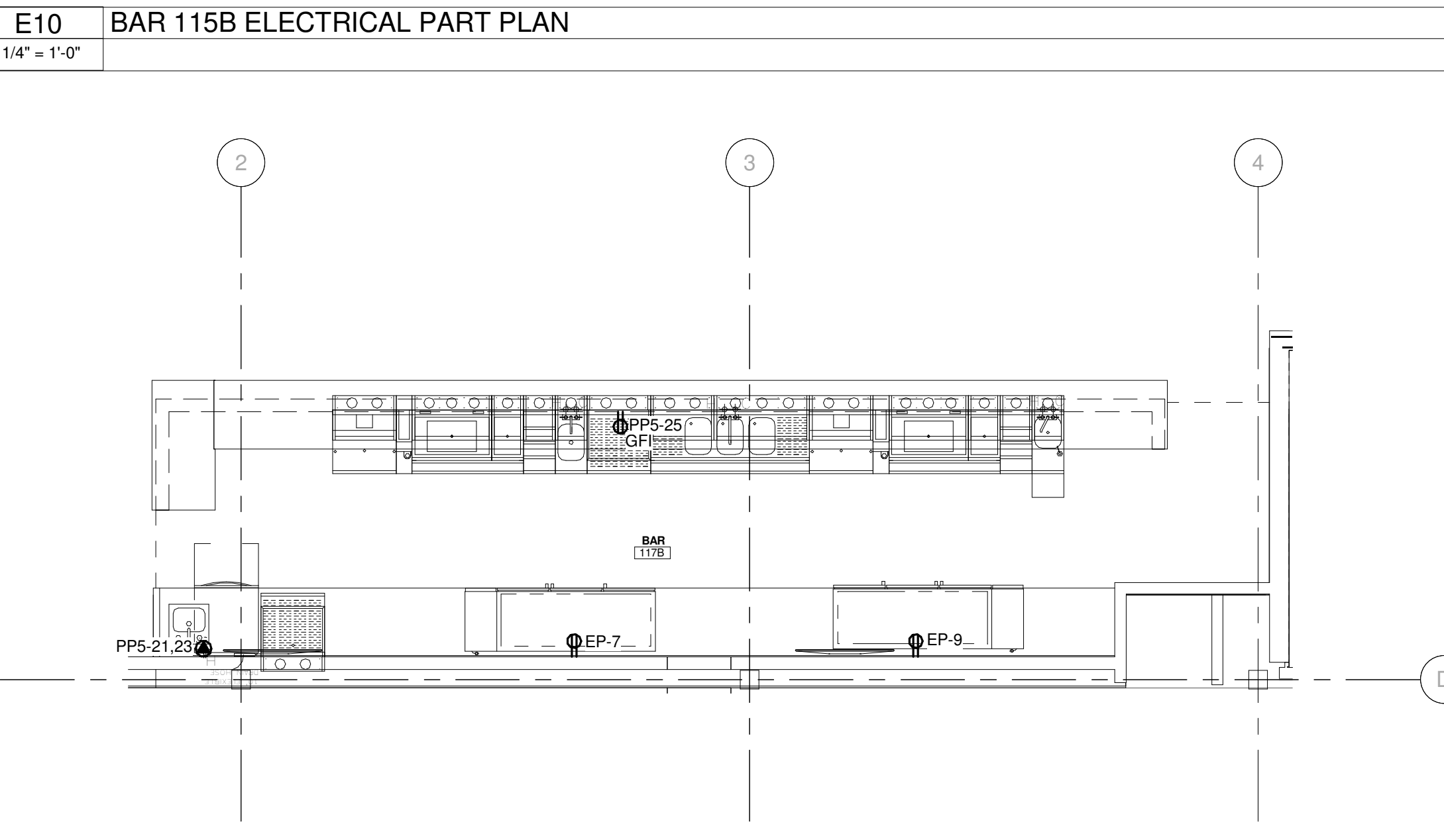
**G6 CLUB BAR 024A ELECTRICAL PART PLAN**  
 1/4" = 1'-0"



**E10 BAR 115B ELECTRICAL PART PLAN**  
 1/4" = 1'-0"

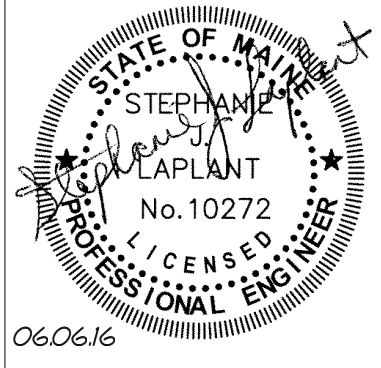
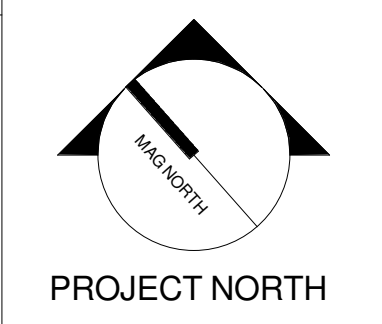


**A6 LOBBY 105 AND STAIR LIGHTING DIMENSION PART PLAN**  
 1/4" = 1'-0"



**A10 BAR 117B ELECTRICAL PART PLAN**  
 1/4" = 1'-0"

REV.	DESCRIPTION	DATE
0	ISSUED FOR BID	06 JUNE 2016



**WBRC**  
 ARCHITECTS ENGINEERS  
 WWW.WBRCAE.COM  
 BANGOR, MAINE 207-947-4511  
 PORTLAND, MAINE 207-828-4511  
 SARASOTA, FLORIDA 941-556-0757

**ASYLUM**

PROJECT:  
**ELECTRICAL PART PLANS**

SHEET TITLE:	
WBRC CAD FILE: C:\Users\kyle.mahar\Documents\407110 - ASYLUM DANCE CLUB - ELEC.kyle.mahar.rvt	GRAPHIC SCALE: 0" = 1"
PROJECT No: 4071.10	SCALE: 1/4" = 1'-0"
PROJECT MANAGER: JRB	SHEET No:
DRAWN BY: KRM	<b>E-401</b>
CHECKED BY: LWJ	

6/3/2016 3:16:02 PM  
 C:\Users\kyle.mahar\Documents\407110 - ASYLUM DANCE CLUB - ELEC.kyle.mahar.rvt