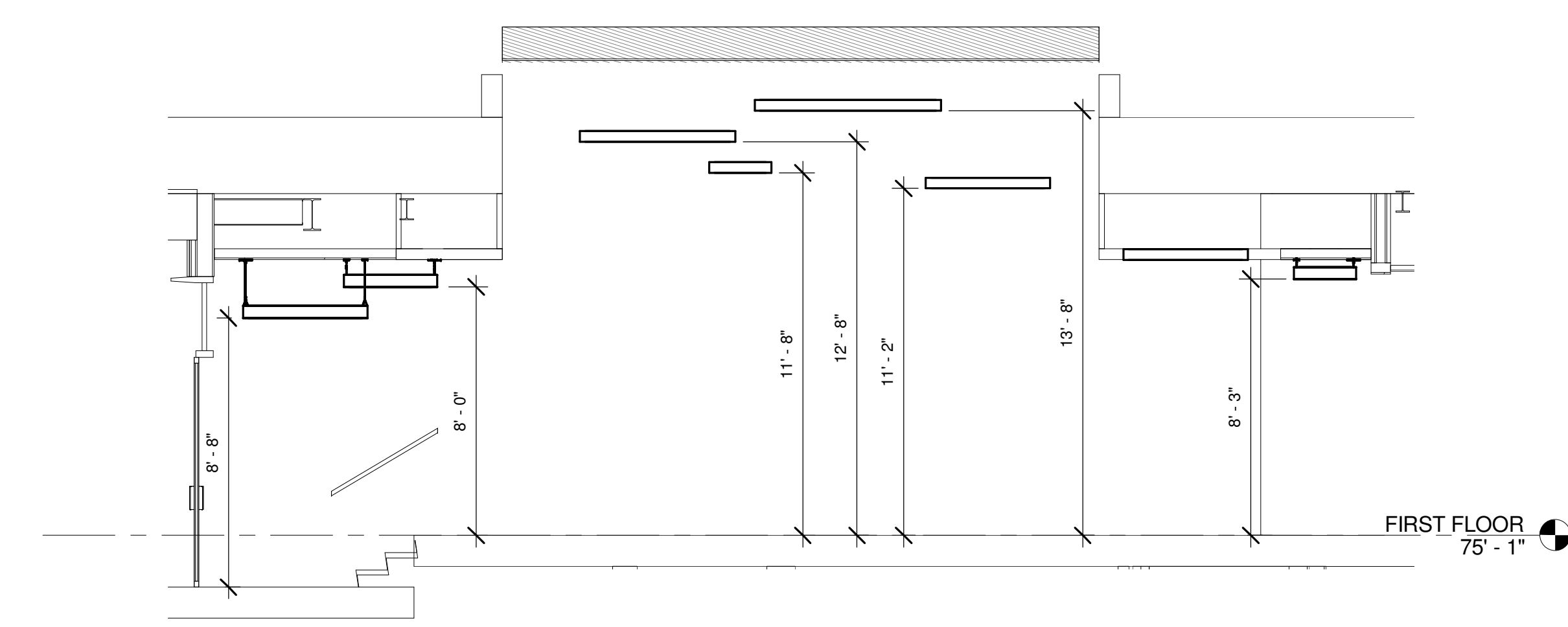
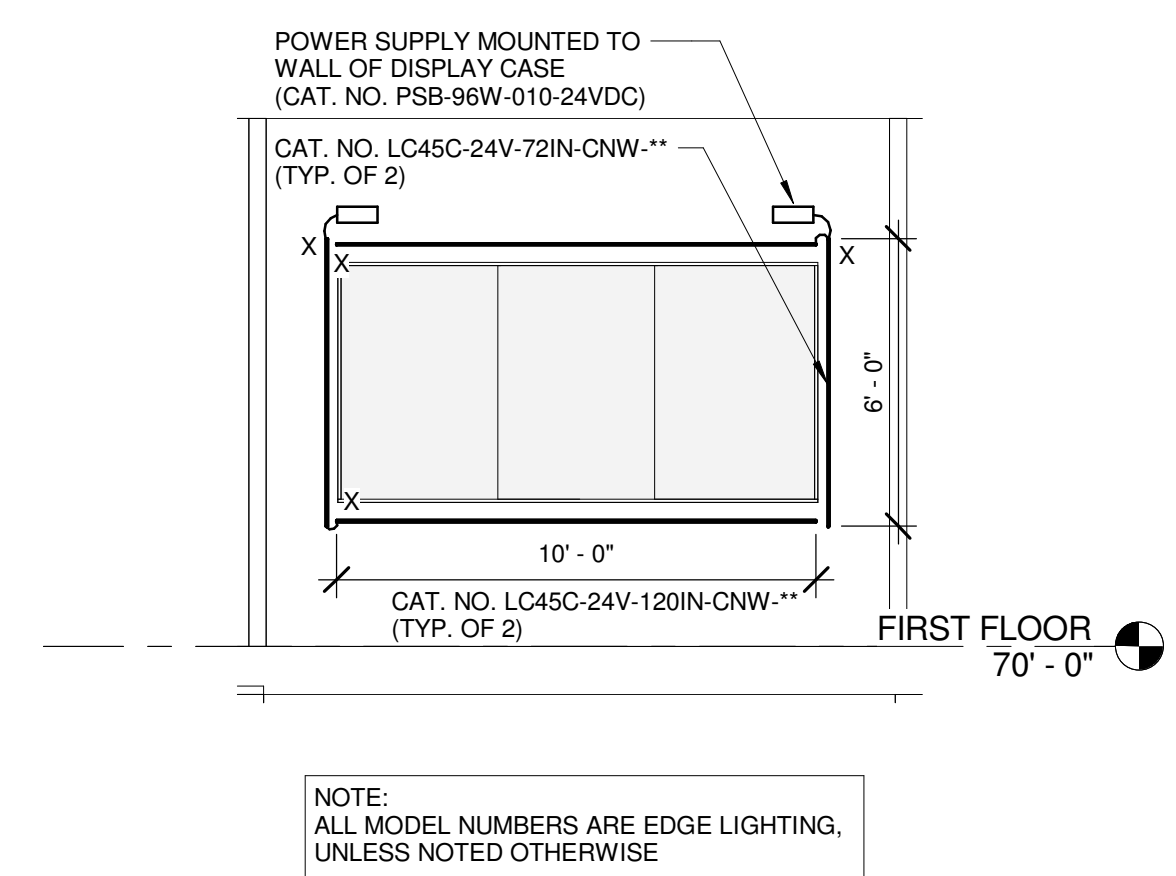


E1 BUILDING LIGHTING ELEVATION - NORTH
1/4" = 1'-0"

E7 BUILDING LIGHTING ELEVATION - EAST
1/4" = 1'-0"

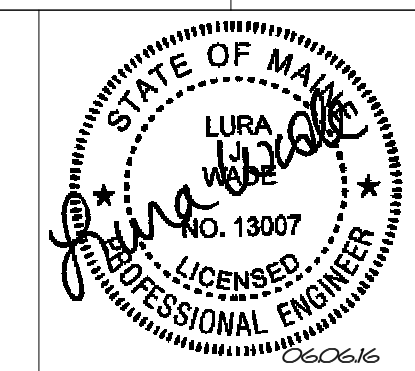
E12 STAIR 151 WEST SECTION
1/4" = 1'-0"

REV.	DESCRIPTION	DATE
0	ISSUED FOR BID	06 JUNE 2016



A6 DISPLAY CASE ELEVATION
1/4" = 1'-0"

A9 STAIR 105A & LOBBY 105 LIGHTING SECTION
1/4" = 1'-0"



WBRC
ARCHITECTS ENGINEERS
WWW.WBRCAE.COM
BANGOR, MAINE 207-947-4511
PORTLAND, MAINE 207-428-4511
SARASOTA, FLORIDA 941-556-0757

PROJECT:
ASYLUM
ELECTRICAL SECTIONS & ELEVATIONS

SHEET TITLE:

WBRC CAD FILE: C:\Users\lyle.mahar\Documents\407110 - ASYLUM DANCE CLUB - ELEC. lyfe.mahar.rvt

PROJECT No: 4071.10

SCALE: 1/4" = 1'-0"

PROJECT MANAGER: JRB

DRAWN BY: KRM

CHECKED BY: LJW

GRAPHIC SCALE: 0" = 1'

SHEET No: E-302

6/3/2016 3:15:56 PM C:\Users\lyle.mahar\Documents\407110 - ASYLUM DANCE CLUB - ELEC. lyfe.mahar.rvt