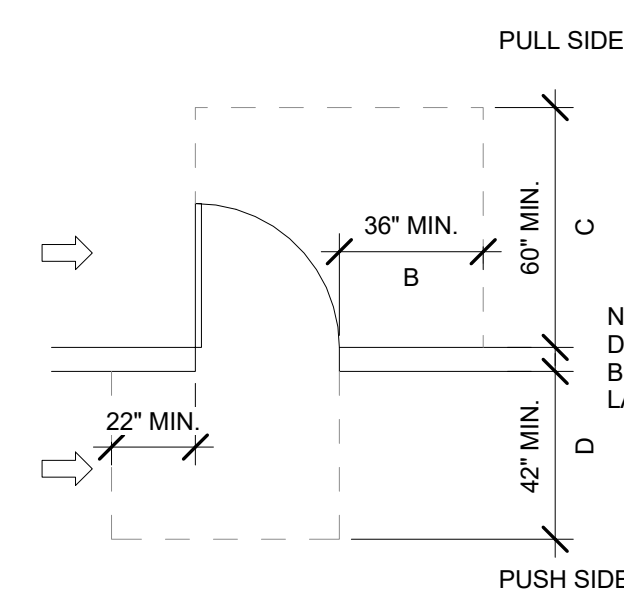
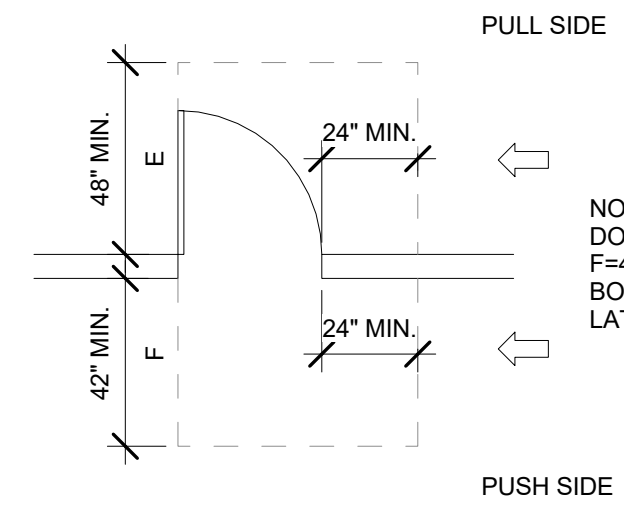


MANEUVERING CLEARANCES AT DOORS

FRONT APPROACH - SWINGING DOORS

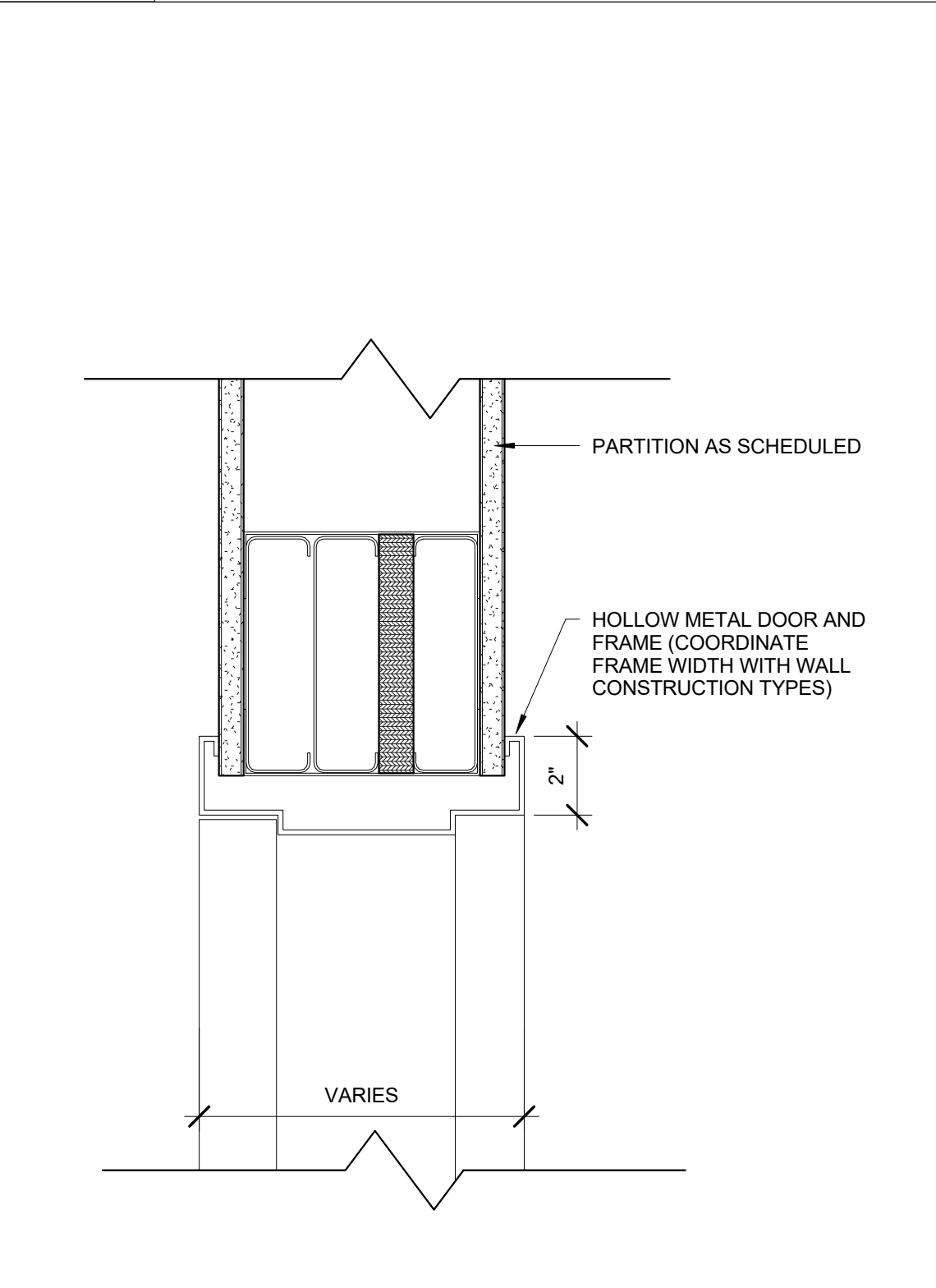


HINGE SIDE APPROACH - SWINGING DOORS

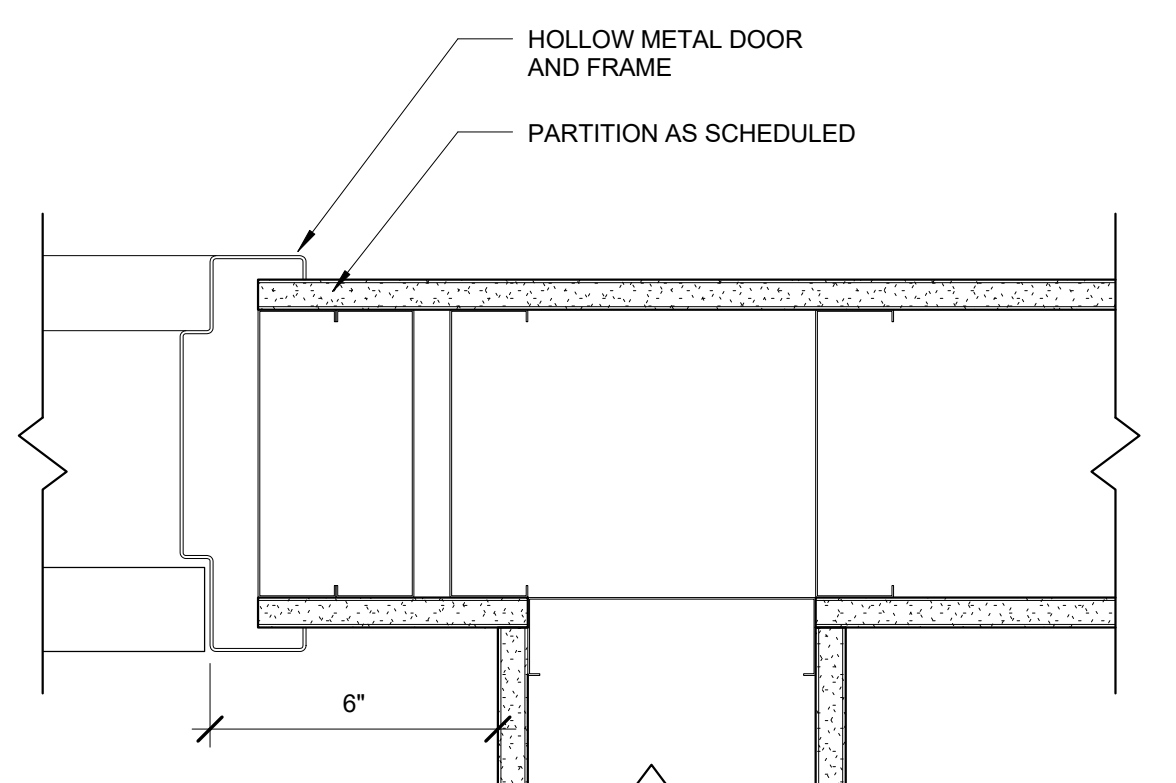


LATCH SIDE APPROACH - SWINGING DOORS

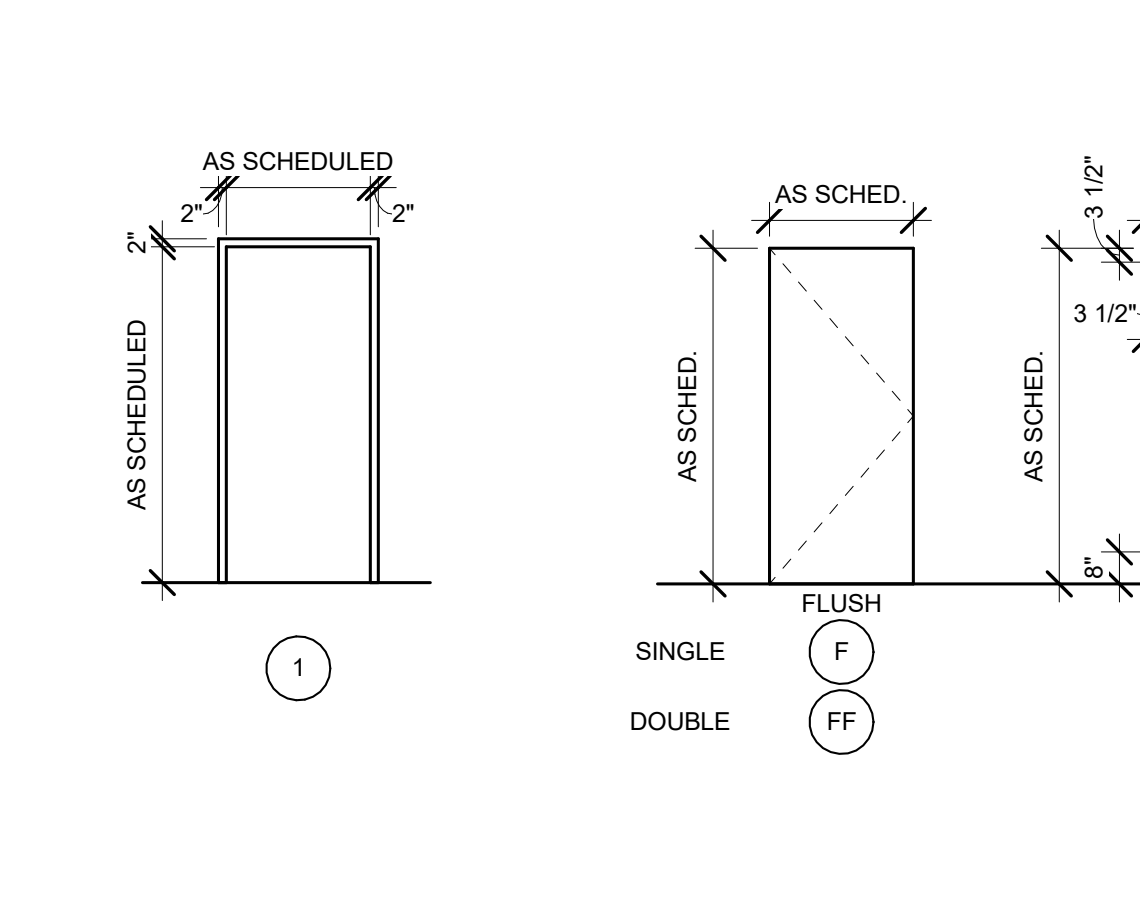
J1 DOOR CLEARANCES
3" = 1'-0"



DOOR AND FRAMES TO BE INSTALLED AS SHOWN IN METAL STUD WALLS UNLESS NOTED, DIMENSIONED, OR SHOWN OTHERWISE ON FLOOR PLANS.

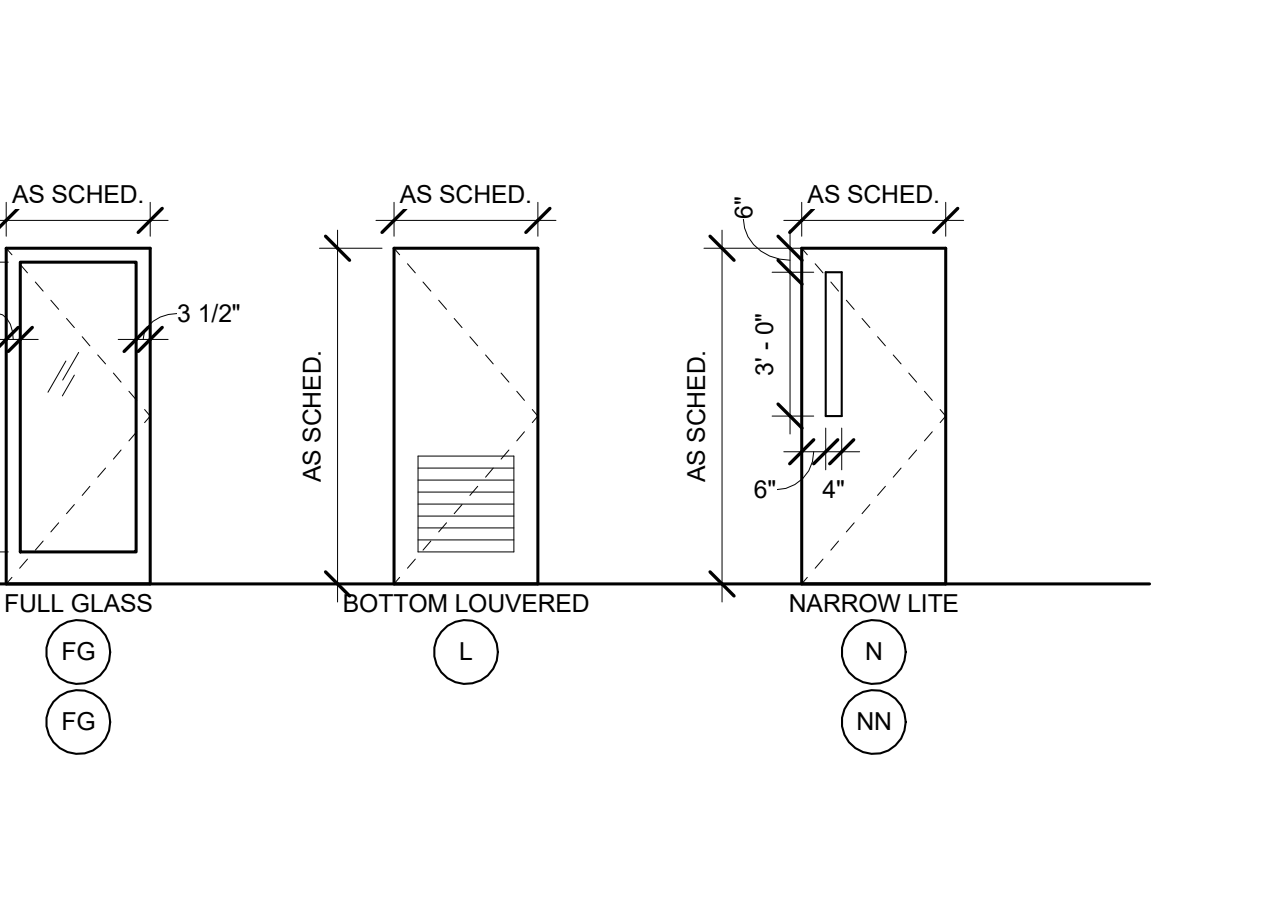


C1 INTERIOR DOOR HEAD DETAIL
3" = 1'-0"



A1 DOOR AND FRAME TYPES
1/4" = 1'-0"

K4 INTERIOR DOOR JAMB AND LOCATION DETAIL
3" = 1'-0"



DOOR SCHEDULE													
DOOR NUMBER	DOOR					FRAME			NOTES				
	WIDTH	HEIGHT	TYPE	MATERIAL	FINISH	TYPE	MATERIAL	FINISH	GL	SECURITY	HARDWARE	FIRE RATING	COMMENTS
001	3'-6"	6'-11"	FG	AL/GL	AL/GL	CW1	AL	AL/GL	IT	KEY LOCK	ITEM 1	N	PANIC HARDWARE / SPECIALTY LOGO HANDLE
002	2'-10"	6'-8"	F	WD	WOOD	1	HM	PT		CARD READER	ITEM 10	N	
003	2'-6"	6'-8"	F	HM	PT	1	HM	PT		KEY LOCK	ITEM 14	N	KEYED W/ MECH. ROOMS
004	6'-0"	6'-8"	FF	WD	WOOD	1	HM	PT			ITEM 16	N	PANIC HARDWARE
005	6'-0"	7'-0"	NN	HM	PT-14	1	HM	PT-14	IT	CARD READER	ITEM 2	N	PAINT TO MATCH STONE / 105 DEGREE OPEN / HOLD OPEN / PANIC HARDWARE
005B1	6'-0"	7'-0"	LIFT									D	STAGE LIFT DOOR
005B2	6'-0"	7'-0"	LIFT									D	STAGE LIFT DOOR
005B3	6'-0"	7'-0"	LIFT									D	STAGE LIFT DOOR
007	6'-0"	6'-8"	FF	HM	PT	1	HM	PT		PUNCH CODE	ITEM 12	E	SELF CLOSING / LATCHING
008	3'-0"	6'-8"	F	WD	WOOD	1	HM	PT		PUNCH CODE	ITEM 10	N	
009	3'-0"	6'-8"	F	HM	PT	1	HM	PT		KEY LOCK	ITEM 17	N	KEYED W/ MECH. ROOMS / SELF CLOSING, 180 DEGREE HINGE, PANIC HARDWARE
010	3'-0"	6'-8"	F	WD	WOOD	1	HM	PT		PRIVACY	ITEM 18	N	
011	2'-6"	6'-8"	F	WD	WOOD	1	HM	PT			ITEM 19	N	
012	3'-0"	6'-8"	F	WD	WOOD	1	HM	PT		PUNCH CODE	ITEM 10	N	
013	3'-0"	6'-8"	F	WD	WOOD	1	HM	PT		PRIVACY	ITEM 18	N	
014	3'-0"	6'-8"	F	N/A	N/A								PROVIDED WITH COOLER
015	3'-0"	6'-8"	N	WD	WOOD	1	HM	PT	T / 20 MIN. RATED	CARD READER	ITEM 10	E	SELF CLOSING / LATCHING
016	5'-8"	6'-8"	NN	WD	WOOD	1	HM	PT	T / 20 MIN. RATED		ITEM 13	E	MAGNETIC HOLD OPEN / SELF CLOSING / LATCHING / PANIC HARDWARE
017	3'-0"	6'-8"	F	WD	WOOD	1	HM	PT			ITEM 20	N	SELF CLOSING
018	3'-0"	6'-8"	F	WD	WOOD	1	HM	PT			ITEM 20	N	SELF CLOSING
019	3'-0"	6'-8"	F	HM	PT	1	HM	PT		KEY LOCK	ITEM 14	N	KEYED W/ MECH. ROOMS
020	5'-8"	6'-8"	NN	WD	WOOD	1	HM	PT	T		ITEM 21	N	SELF CLOSING / LATCHING / PANIC HARDWARE
021	3'-0"	6'-8"	F	WD	WOOD	1	HM	PT		CARD READER	ITEM 10	E	SELF CLOSING / LATCHING
021A	2'-6"	6'-8"	F	WD	WOOD	1	HM	PT			ITEM 19	N	
021B	5'-8"	6'-8"	FF	WD	WOOD	1	HM	PT			ITEM 22	N	
022	3'-0"	6'-8"	F	WD	WOOD	1	HM	PT		PRIVACY	ITEM 18	N	
023	3'-0"	6'-8"	F	WD	WOOD	1	HM	PT		KEY LOCK	ITEM 23	N	KEY FOR OWNERS ONLY
024	3'-0"	6'-8"	N	WD	WOOD	1	HM	PT	T		ITEM 23	N	MAGNETIC HOLD OPEN / SELF CLOSING / LATCHING / PANIC HARDWARE
025	2'-2"	6'-8"	L	HM	PT	1	HM	PT		CARD READER	ITEM 10	N	
026	3'-0"	6'-6"	F	ETR	PT	ETR	ETR	PT				N	EXISTING DOOR TO REMAIN - REFINISH
027	3'-0"	6'-6"	F	ETR	PT	ETR	ETR	PT				N	EXISTING DOOR TO REMAIN - REFINISH
029	3'-0"	6'-6"	F	WD	WOOD	1	HM	PT		CARD READER	ITEM 10	N	
030A	6'-0"	6'-6"	FF	ETR	WOOD	ETR	HM	PT				N	EXISTING DOOR TO REMAIN - REFINISH
030B	3'-0"	6'-8"	F	ETR	WOOD	ETR	HM	PT				N	EXISTING DOOR TO REMAIN - REFINISH
031	3'-0"	6'-8"	F	ETR	WOOD	ETR	HM	PT				N	EXISTING DOOR TO REMAIN - REFINISH
040	3'-0"	6'-8"	F	HM	PT	1	HM	PT		KEY LOCK	ITEM 14	N	KEYED W/ MECH. ROOMS
101	3'-6"	7'-0"	FG	AL/GL	AL/GL	SF1	AL	AL/GL	IT	KEY LOCK	ITEM 1	N	PANIC HARDWARE / SPECIALTY LOGO HANDLE
101A	6'-2 1/4"	6'-8"	G	AL/GL	AL/GL	SF1	AL	AL/GL	T - FROSTED		ITEM 24		180 DEGREE HINGE / MAGNETIC HOLD OPEN / SPECIALTY LOGO HANDLE
102	3'-0"	7'-0"	F	WD	WOOD	1	HM	PT			ITEM 20	N	
102A	2'-0"	6'-8"	F	HM	PT	1	HM	PT			ITEM 19	N	
103	3'-0"	7'-0"	F	HM	PT-15	2	SS	PT-15		CARD READER	ITEM 3	N	PAINT TO MATCH BRICK / EXTERIOR / INSULATED DOOR / PANIC HARDWARE
104	3'-0"	6'-8"	F	N/A	N/A								PROVIDED WITH COOLER
104A	3'-0"	6'-8"	F	N/A	N/A								PROVIDED WITH COOLER
105	7'-7"	7'-4"	FG	AL/GL	AL/GL	CW1	AL	AL/GL	IT	KEY LOCK	ITEM 6	N	PANIC HARDWARE / SPECIALTY LOGO HANDLE
105A	5'-9"	6'-8"	G	AL/GL	AL/GL	SF1	AL	AL/GL	T - FROSTED	KEY LOCK	ITEM 6		PANIC HARDWARE / SPECIALTY LOGO HANDLE
105B	5'-9"	6'-8"	G	AL/GL	AL/GL	SF1	AL	AL/GL	T - FROSTED	KEY LOCK	ITEM 6		PANIC HARDWARE / SPECIALTY LOGO HANDLE
106	3'-0"	7'-0"	F	ETR	WOOD	ETR	ETR	PT		KEY LOCK	ITEM 14	N	
107	3'-0"	7'-0"	F	WD	WOOD	1	HM	PT		CARD READER	ITEM 10	N	
108	3'-0"	7'-0"	F	WD	WOOD	1	HM	PT		CARD READER	ITEM 10	N	
109	3'-0"	7'-0"	F	ETR	PT	2	ETR	PT		EXIT ONLY	ITEM 5	N	EXISTING DOOR TO REMAIN - REFINISH
110	5'-8"	6'-8"	FF	HM	PT	1	HM	PT		KEY LOCK	ITEM 15	N	KEYED W/ MECH. ROOMS
111	3'-0"	6'-8"	F	HM	PT	1	HM	PT		CARD READER	ITEM 10	E	SELF CLOSING / LATCHING
112	2'-6"	7'-0"	F	HM	PT	1	HM	PT		KEY LOCK	ITEM 14	N	KEYED W/ MECH. ROOMS
113	3'-0"	7'-0"	F	WD	WOOD	1	HM	PT			ITEM 20	N	
114	3'-0"	7'-0"	F	WD	WOOD	1	HM	PT			ITEM 20	N	
116	2'-6"	7'-0"	F	HM	PT	1	HM	PT		CARD READER	ITEM 10	N	
120	3'-0"	7'-0"	F	HM	PT	1	HM	PT		CARD READER	ITEM 10	N	
150A	3'-0"	6'-8"	N	WD	WOOD	1	HM	PT	T		ITEM 8	D	MAGNETIC HOLD OPEN / SELF CLOSING / LATCHING / PANIC HARDWARE
150B	3'-0"	7'-0"	F	HM	PT-14	2	SS	PT-14		PUNCH CODE	ITEM 4	D	PAINT TO MATCH STONE / EXTERIOR / INSULATED DOOR / PANIC HARDWARE
150C	3'-0"	6'-8"	N	WD	WOOD	1	HM	PT	T		ITEM 8	D	MAGNETIC HOLD OPEN / SELF CLOSING / LATCHING / PANIC HARDWARE
150D	3'-0"	6'-8"	N	WD	WOOD	1	HM	PT	T	PUNCH CODE	ITEM 9	D	MAGNETIC HOLD OPEN / SELF CLOSING / LATCHING / PANIC HARDWARE
150E	3'-0"	6'-4"	F	HM	PT	1	HM	PT		CARD READER	ITEM 9	D	MAGNETIC HOLD OPEN / SELF CLOSING / LATCHING / PANIC HARDWARE
150F	3'-0"	7'-0"	N	WD	WOOD	1	HM	PT	T	KEY LOCK	ITEM 8	D	MAGNETIC HOLD OPEN / SELF CLOSING / LATCHING / PANIC HARDWARE
151	3'-6"	6'-11"	FG	AL/GL	AL/GL	CW1	AL	AL/GL	IT	KEY LOCK	ITEM 1	N	PANIC HARDWARE / SPECIALTY LOGO HANDLE
151A	3'-0"	7'-0"	N	WD	WOOD	1	HM	PT	T		ITEM 7	D	HEAD MOUNT MAGNETIC HOLD OPEN / SELF CLOSING / LATCHING / PANIC HARDWARE
151B	3'-0"	6'-4"	F	HM	PT	1	HM	PT		CARD READER	ITEM 9	D	MAGNETIC HOLD OPEN / SELF CLOSING / LATCHING / PANIC HARDWARE
151C	3'-0"	7'-0"	N	WD	WOOD	1	HM	PT	T	KEY LOCK	ITEM 7	D	HEAD MOUNT MAGNETIC HOLD OPEN / SELF CLOSING / LATCHING / PANIC HARDWARE
152	3'-0"	6'-6"	F	ETR	WOOD	1	ETR	PT				N	EXISTING DOOR TO REMAIN - REFINISH
153	3'-8"	7'-0"	F	HM	PT-15	2	SS	PT-15		EXIT ONLY	ITEM 5	N	PAINT TO MATCH BRICK / EXTERIOR / INSULATED DOOR / PANIC HARDWARE
153A	3'-0"	6'-8"	F	ETR	WOOD	1	ETR	PT				N	EXISTING DOOR TO REMAIN - REFINISH
154	3'-0"	6'-8"	F	ETR	WOOD	1	ETR	PT				N	EXISTING DOOR TO REMAIN - REFINISH
156	3'-0"	6'-6"	F	HM	PT	1	HM	PT				E	MAGNETIC HOLD OPEN / SELF CLOSING / LATCHING / PANIC HARDWARE
200	3'-0"	4'-8"	F	HM	PT-16	1	SS	PT-16		CARD READER	ITEM 13	N	PAINT TO MATCH METAL PANEL / FOB ON BOTH SIDES OF DOOR / EXTERIOR / INSULATED DOOR
200A	3'-0"	6'-8"	F	HM	PT	1	HM	PT			ITEM 19	N	
204	3'-0"	7'-0"	F	WD	WOOD	1	HM	PT			ITEM 20	N	
205	3'-0"	7'-0"	F	WD	WOOD	1	HM	PT			ITEM 20	N	
207	2'-6"	7'-0"	F	HM	PT	1	HM	PT		KEY LOCK	ITEM 14	N	KEYED W/ MECH. ROOMS

- GENERAL DOOR TYPE NOTES**
- ALL DOORS TO BE FLUSH, 1 3/4" THICK, U.N.O.
 - DOOR DETAILS ARE TYPICAL ON THIS SHEET UNLESS REFERENCED OTHERWISE ON THE DRAWINGS. REFER TO THE PARTITION TYPE OR APPLICABLE WALL SECTION AND THEN TO TYPICAL DOOR DETAILS FOR APPROPRIATE DETAIL.
 - PAIN ALL DOORS AND DOOR FRAMES PT9, UNO.

- DOOR TYPE LEGEND**
- FIRE RATING**
A - 3 HOURS
B - 1 1/2 HOURS
C - 1 HOUR
D - 3/4 HOURS
E - TWENTY MINUTES
N - NO RATING

- GLAZING TYPES**
T - CLEAR TEMPERED GLASS
TT - TINTED AND TEMPERED GLASS
W - CLEAR WIRE GLASS
IT - INSULATED TEMPERED GLASS

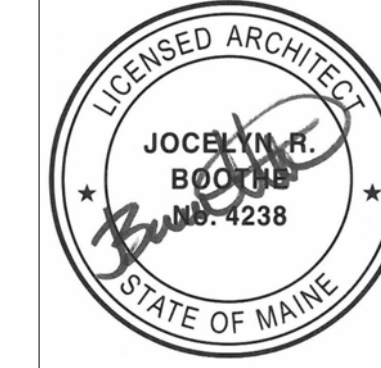
- DOOR FRAME MATERIAL TYPES**
HM - HOLLOW METAL
AL - ALUMINUM
SS - STAINLESS STEEL
WD - WOOD

- DOOR MATERIAL TYPES**
WOOD - WOOD
PLAM - PLASTIC LAMINATED CLAD
HM - HOLLOW METAL
AL/GL - ALUMINUM AND GLASS
TG - CLEAR TEMPERED GLASS

- DOOR FINISH TYPES**
WOOD - WOOD
PNT - PAINT
AL/GL - ALUMINUM AND GLASS

ETR = EXISTING TO REMAIN

0	ISSUED FOR CONSTRUCTION	06 JUNE 2016
REV.	DESCRIPTION	DATE



WBRC
ARCHITECTS ENGINEERS
WWW.WBRCAE.COM
BANGOR, MAINE 207-947-4511
PORTLAND, MAINE 207-528-4511
SARASOTA, FLORIDA 941-556-0757

ASYLUM

DOOR TYPES & SCHEDULE

SHEET TITLE:

WBRC CAD FILE: C:\Users\jbooth\Documents\407110 - ASYLUM DANCE CLUB - ARCH_jbooth.rvt	GRAPHIC SCALE: 0" = 1"
PROJECT No: 4071.10	SHEET No: AE601
SCALE: As Indicated	
PROJECT MANAGER: JRB	
DRAWN BY: JRB	
CHECKED BY: JET/MEJ	

6/17/2016 8:46:25 AM C:\Users\jbooth\Documents\407110 - ASYLUM DANCE CLUB - ARCH_jbooth.rvt