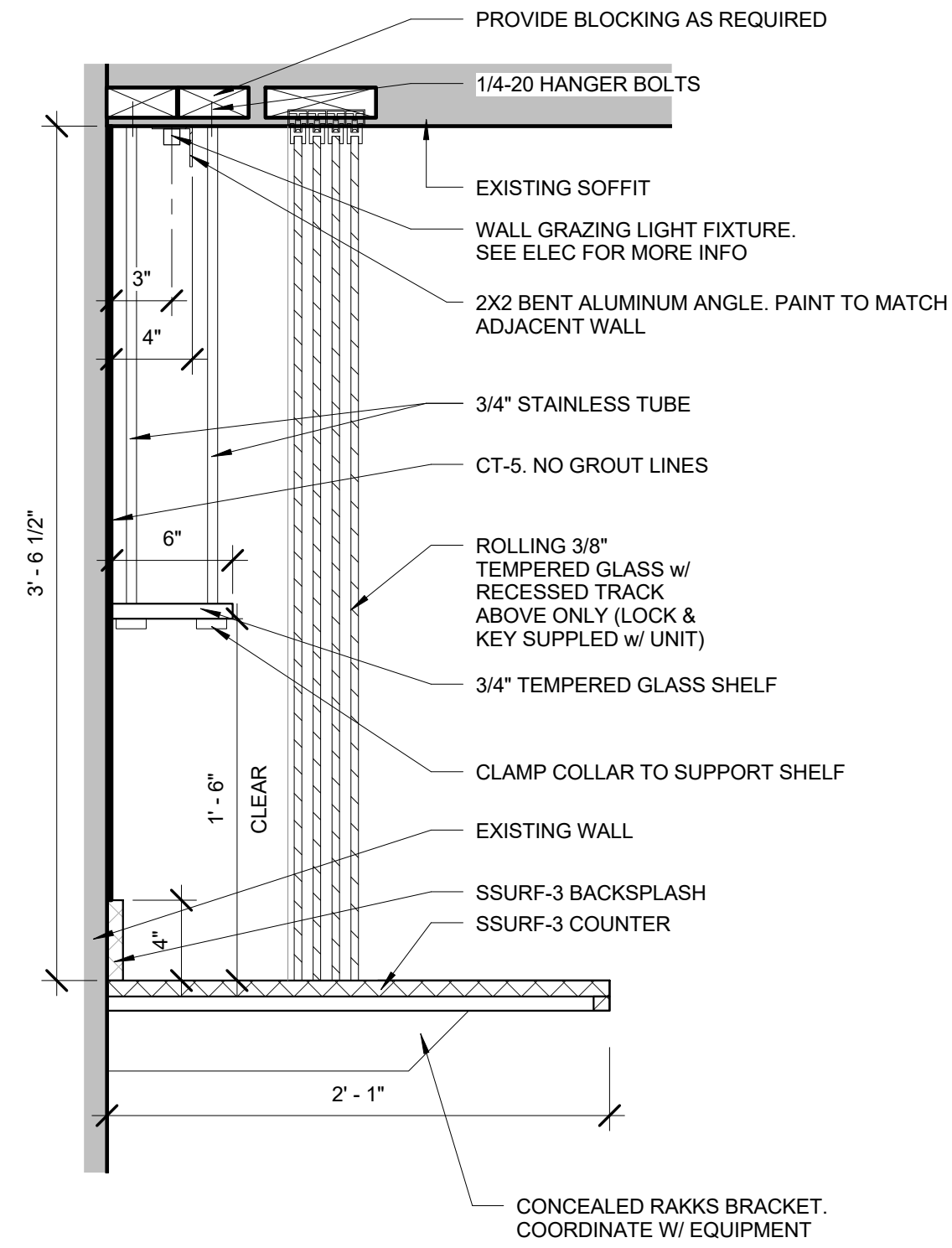
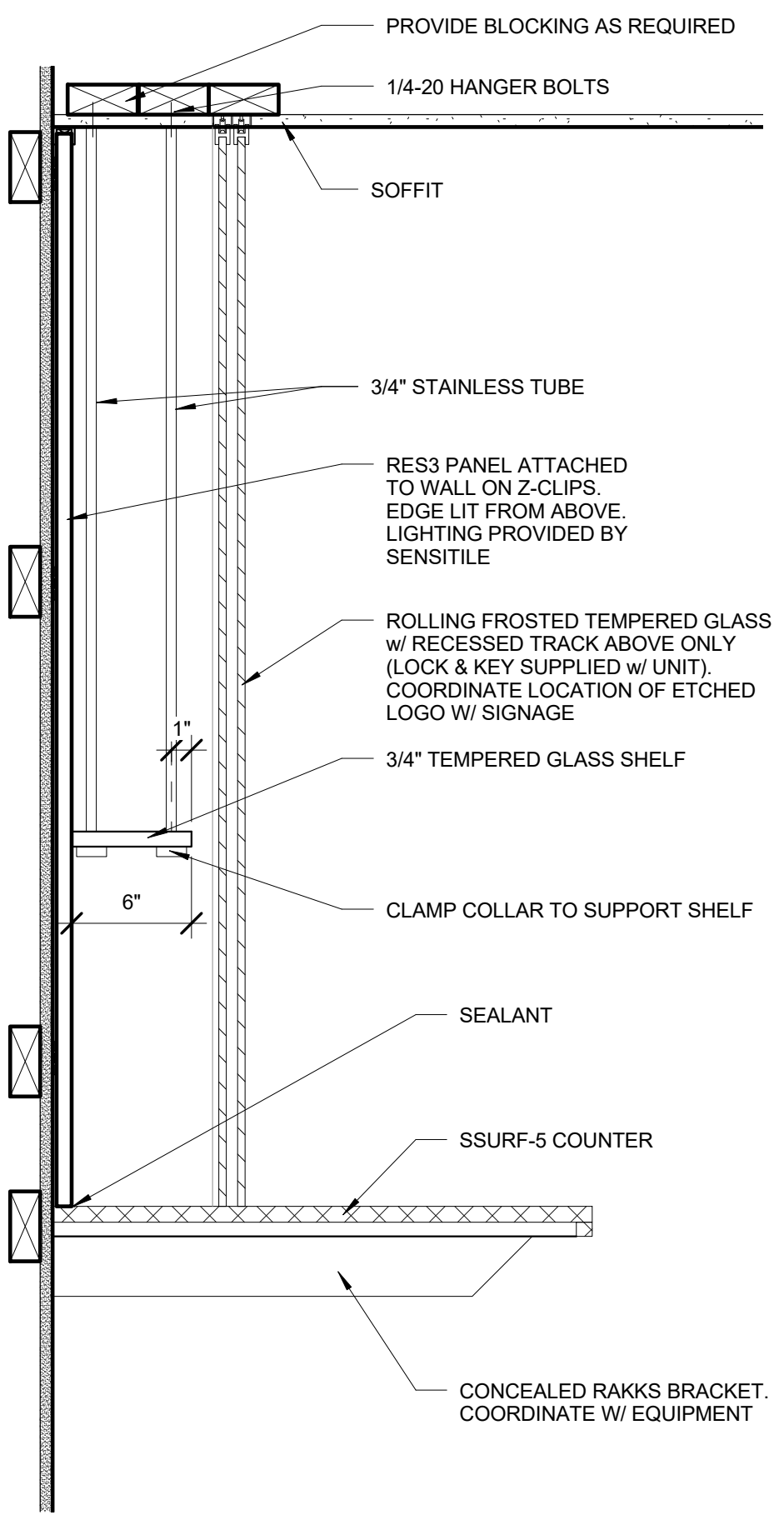


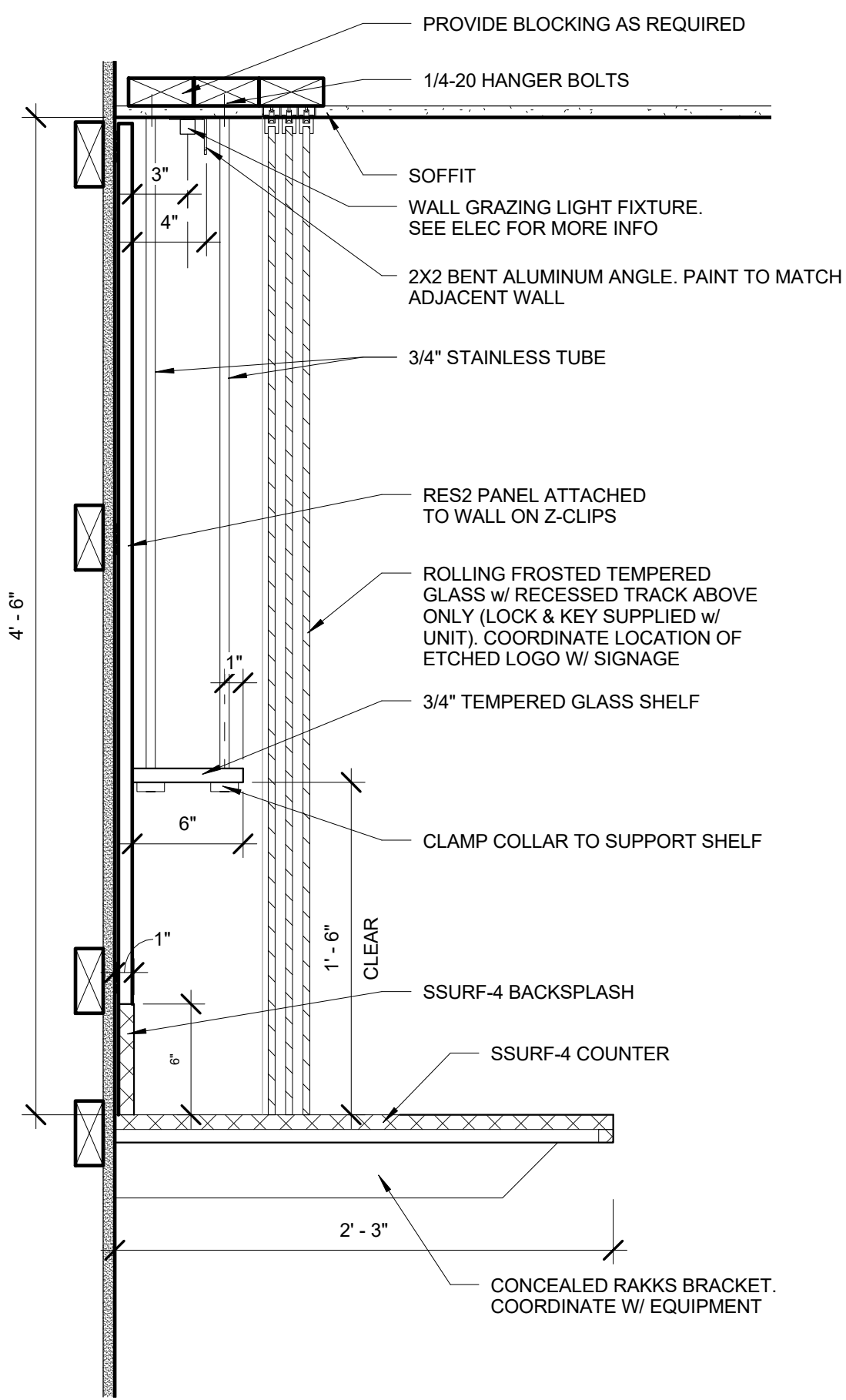
H1 ADA BAR TOP
1 1/2" = 1'-0"



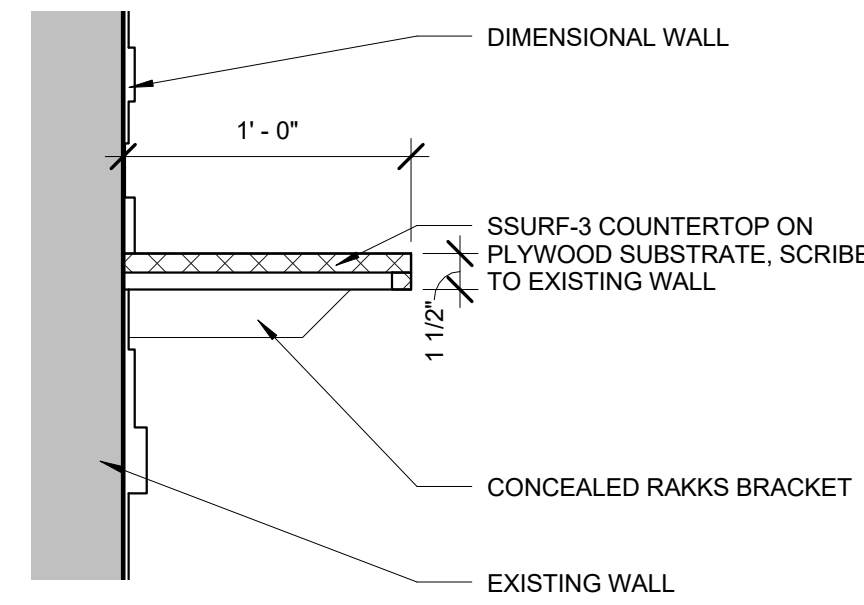
H4 024A - BACK BAR LIQUOR STORAGE SHELF
1 1/2" = 1'-0"



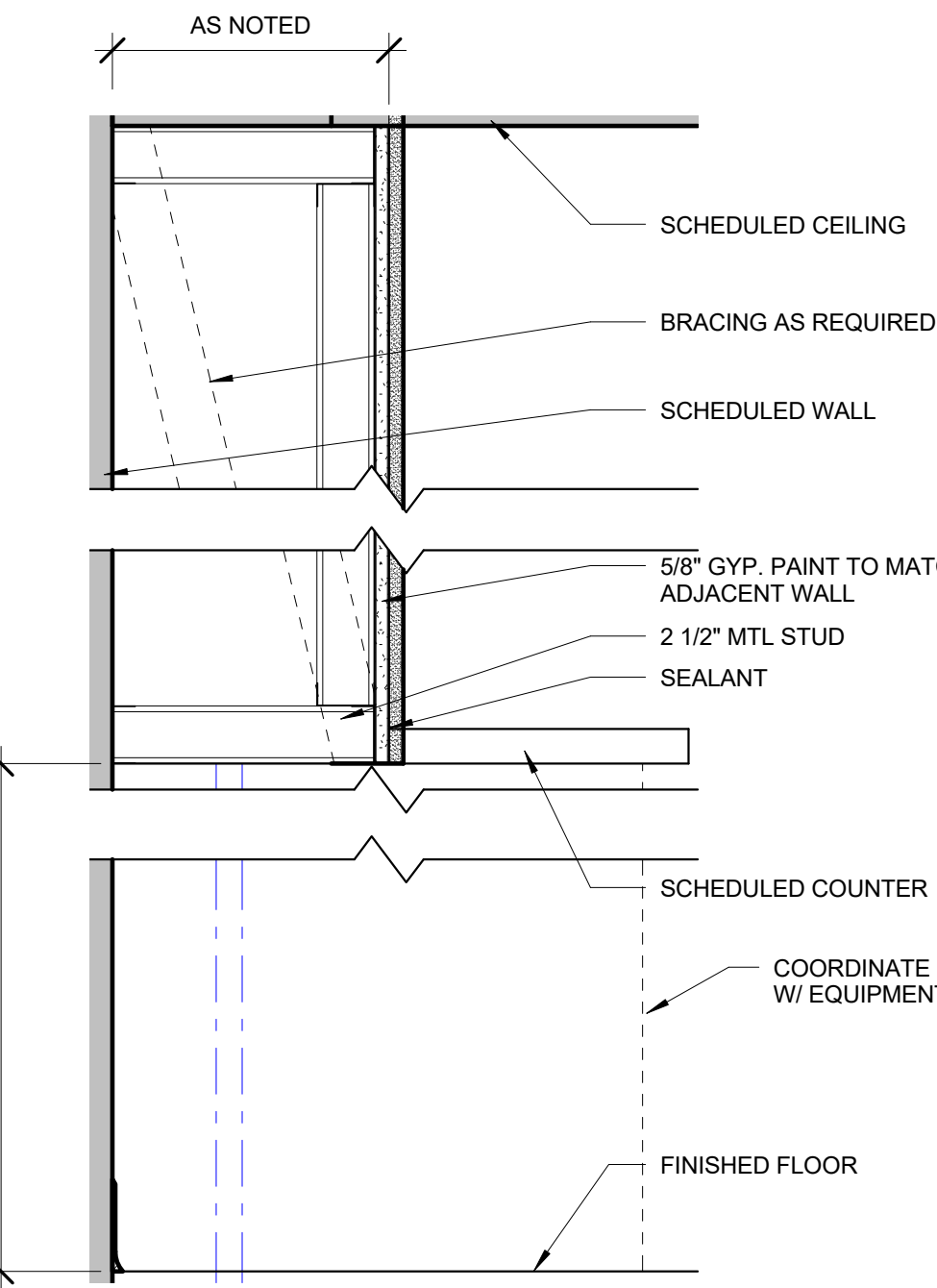
A1 115 - BAR - BACK BAR DETAIL
1 1/2" = 1'-0"



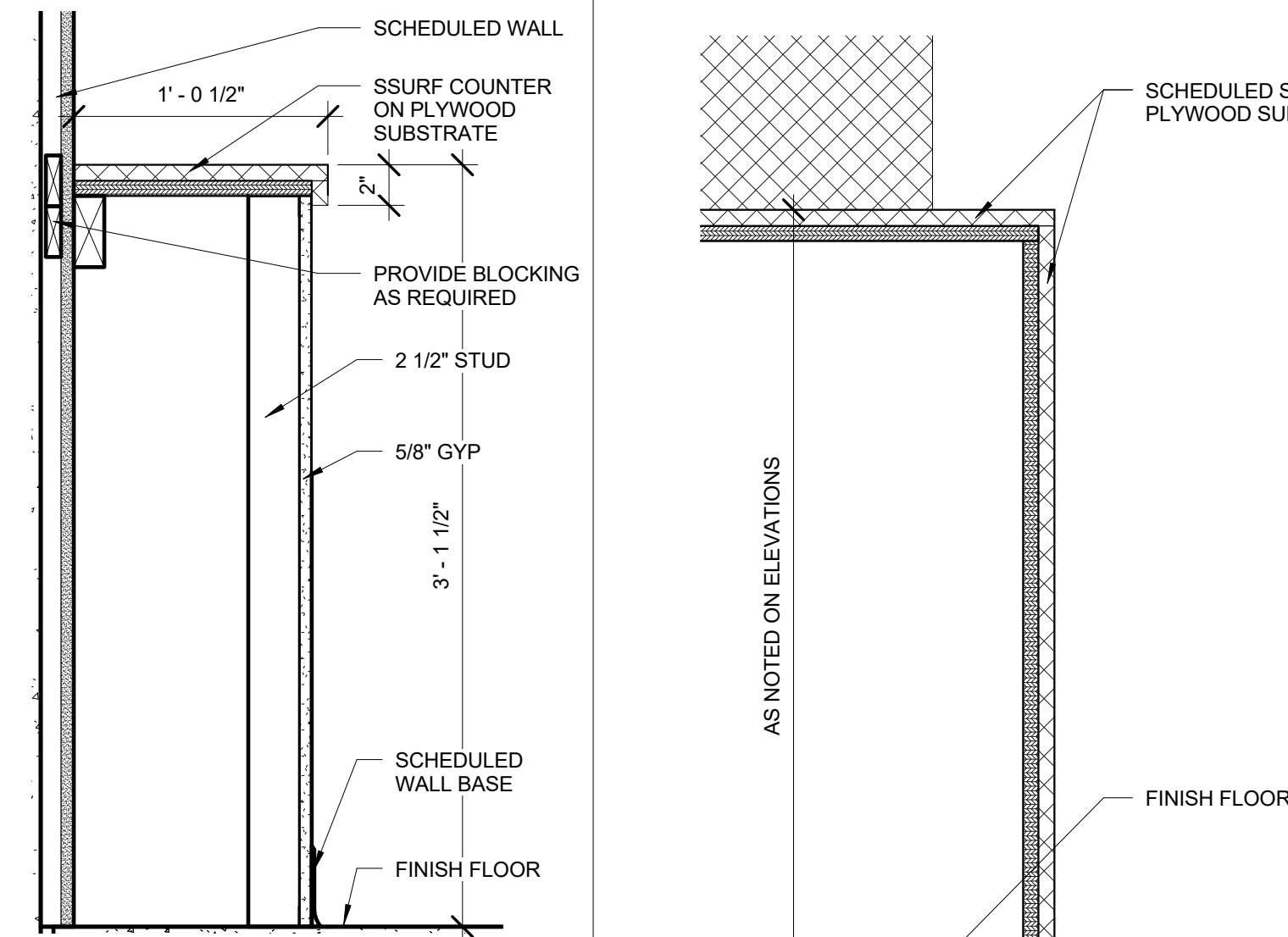
A4 004A - BAR - BACK BAR DETAIL
1 1/2" = 1'-0"



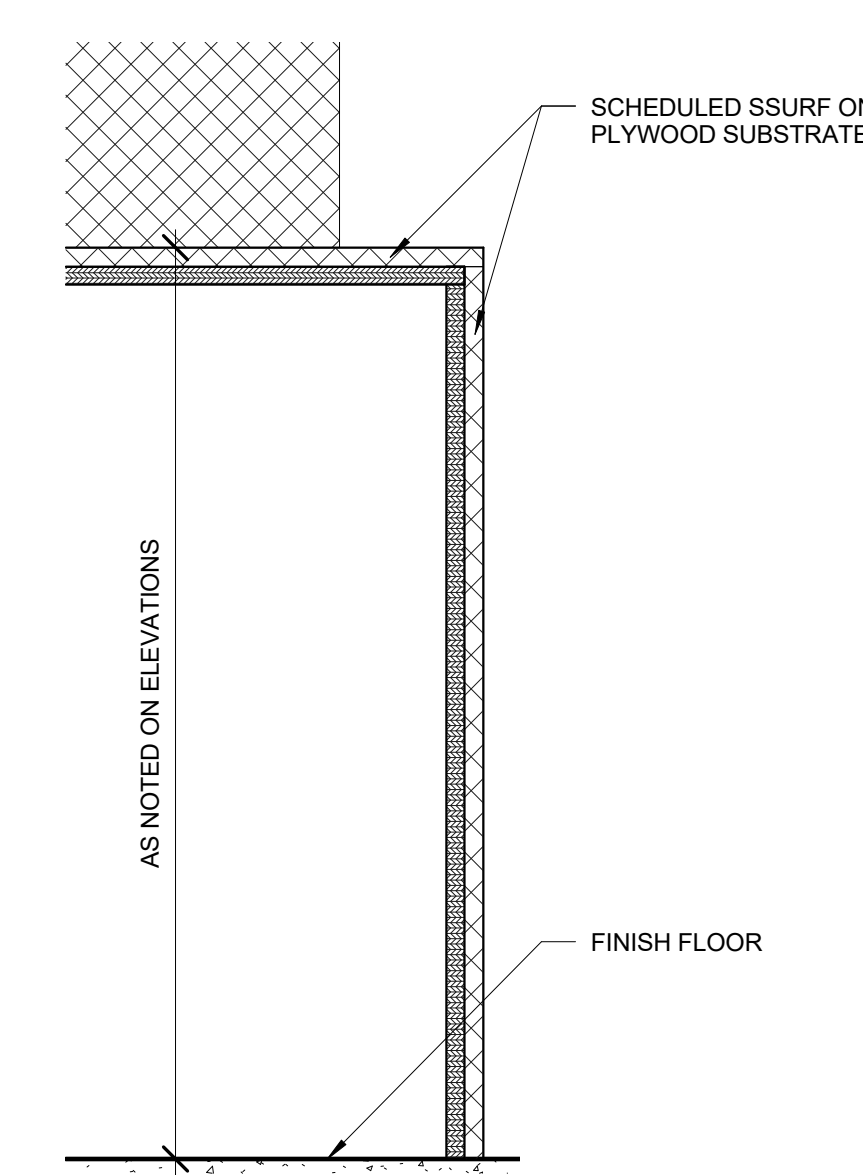
J8 DRINK RAIL @ DANCE CLUB
1 1/2" = 1'-0"



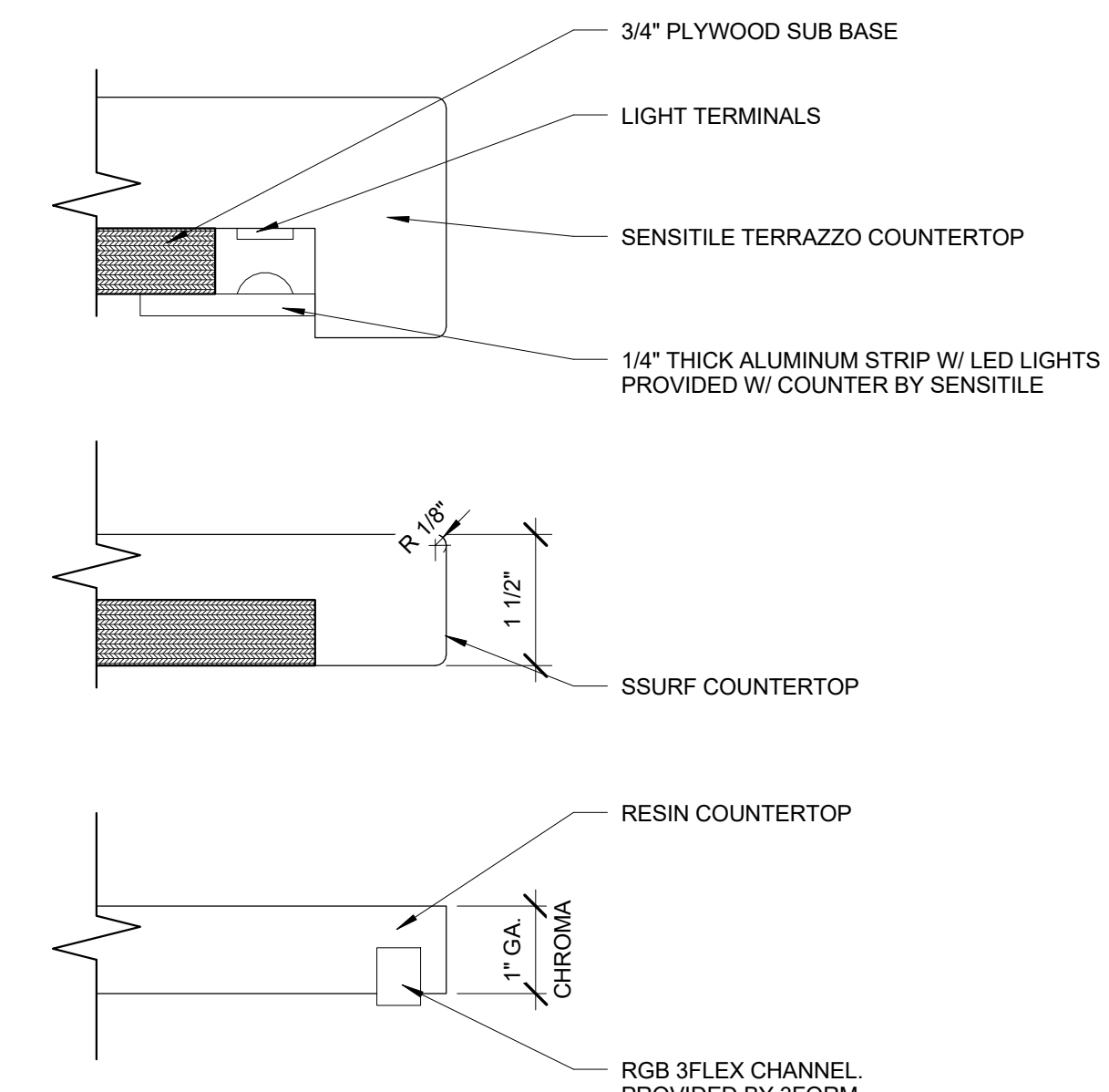
E8 TYPICAL BAR NICHE
1 1/2" = 1'-0"



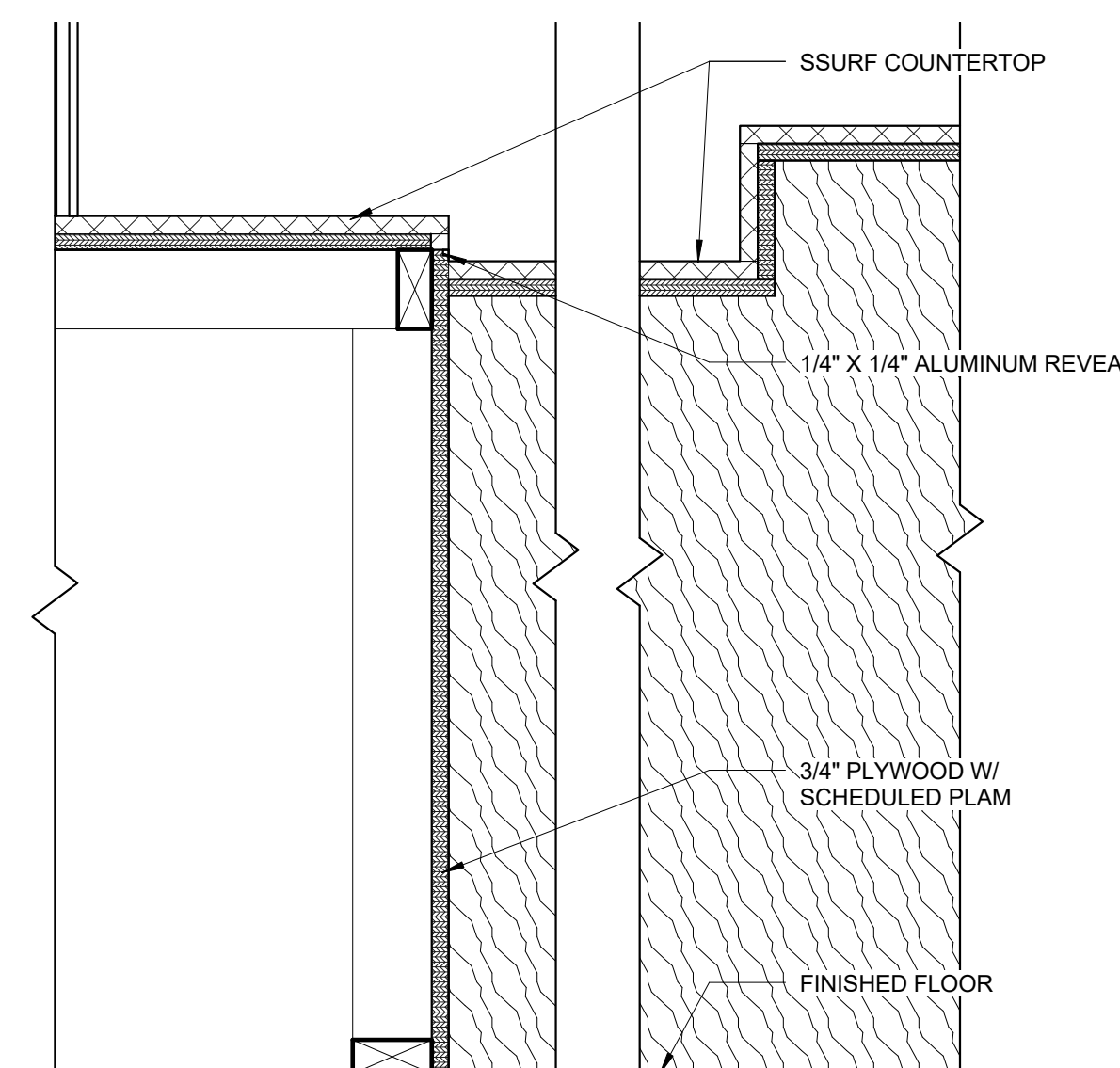
J12 BAR 004B DRINK RAIL
1 1/2" = 1'-0"



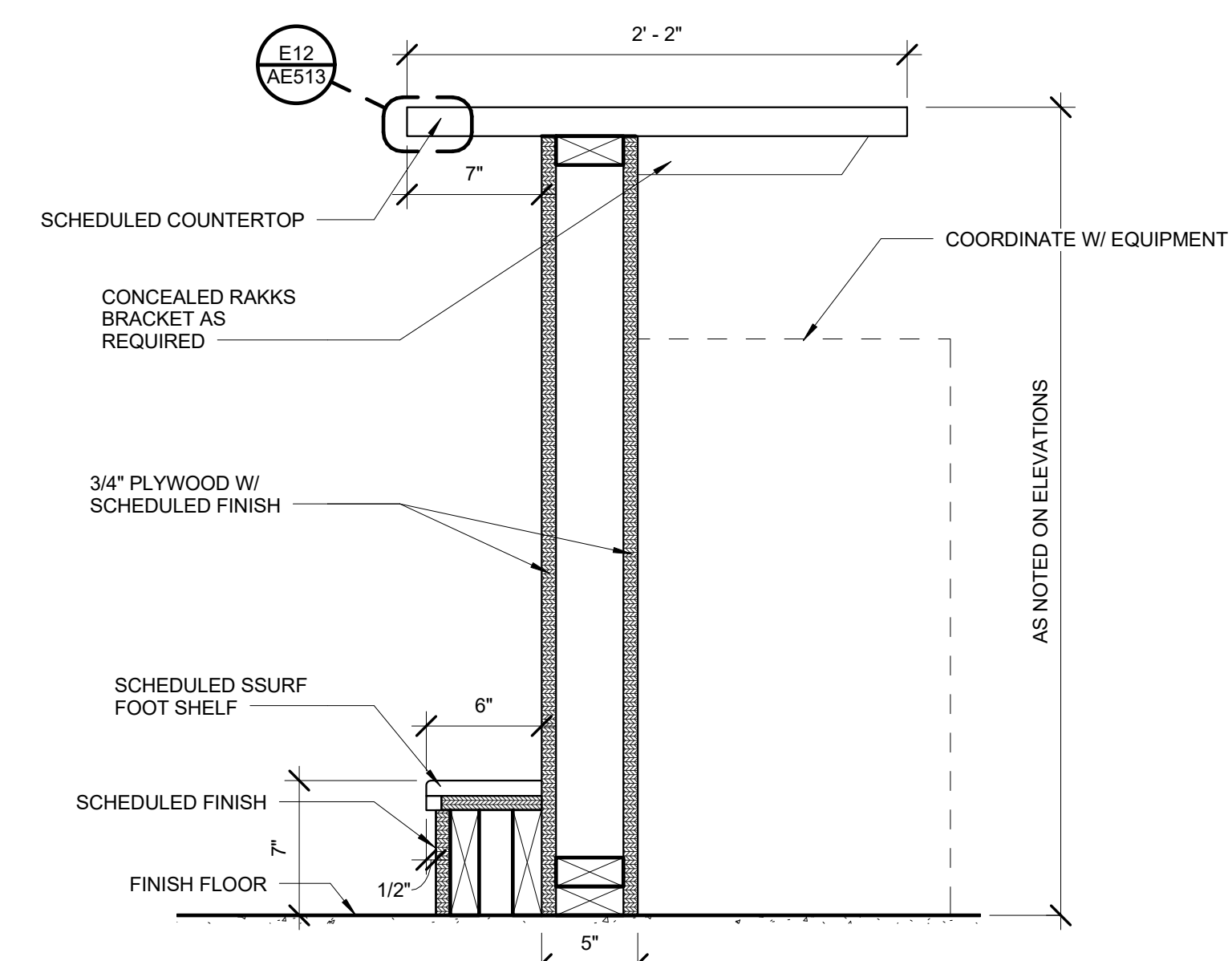
J14 SSURF WATERFALL COUNTER
1 1/2" = 1'-0"



E12 COUNTER EDGE DETAILS
6" = 1'-0"



A8 SSURF COUNTERTOP TRANSITION
1 1/2" = 1'-0"

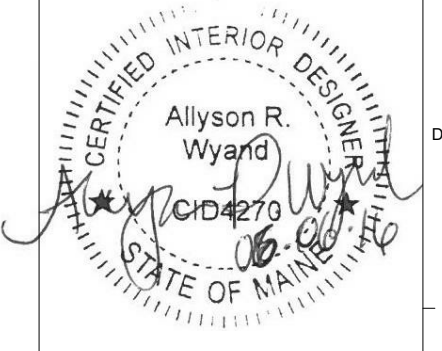


A12 FRONT BAR DETAIL
1 1/2" = 1'-0"

MILLWORK NOTES:

1. CABINETS AND COUNTERS ARE TO COMPLY W/ AWI PREMIUM GRADE. SEE SPEC FOR ADDITIONAL INFORMATION.
2. SEE FINISH SCHEDULE AND/OR INTERIOR ELEVATIONS FOR CABINET/COUNTER CLADDING BY ROOM.
3. PANEL CORE AND EDGE BANDING AS SPECIFIED OR IMPLIED BY AWI CABINET/COUNTER GRADE. SPEC LANGUAGE SUPERSEDES STANDARD.
4. FASTEN CABINETS AS REQUIRED BY AWI STANDARD FOR PREMIUM GRADE.
5. PROVIDE LOCKS IN LOCATIONS AS INDICATED ON INTERIOR ELEVATIONS AND/OR IN SPEC.
6. PROVIDE BACK AND END SPLASHES AT COUNTERS WITH SINKS AND AS INDICATED ON INTERIOR ELEVATIONS.
7. MATCH BACK AND END SPLASHES TO COUNTERTOP MATERIAL UNLESS NOTED OTHERWISE.
8. SCRIBE AND SEAL COUNTERS AND/OR SPLASHES TO WALL.
9. COORDINATE CABINET ENCLOSURE WITH PLUMBING DRAWINGS AND SPEC PRIOR TO FABRICATIONS. NOTIFY ARCHITECT OF DISCREPANCIES.

0	ISSUED FOR CONSTRUCTION	06 JUNE 2016
REV.	DESCRIPTION	DATE



WBRC
ARCHITECTS ENGINEERS
WWW.WBRCAE.COM
BANGOR, MAINE 207-947-4511
PORTLAND, MAINE 207-528-4511
SARASOTA, FLORIDA 941-556-0757

ASYLUM

PROJECT:
MILLWORK DETAILS

SHEET TITLE:
WBRC CAD FILE: C:\Users\jpcy\Documents\407110 - ASYLUM DANCE CLUB - ARCH - jpcy\miller\booth.rvt

PROJECT No: 4071.10
SCALE: As indicated
PROJECT MANAGER: JRB
DRAWN BY: ARW
CHECKED BY: JLR

GRAPHIC SCALE: 0" = 1'
SHEET No: **AE513**

6/7/2016 8:43:25 AM C:\Users\jpcy\Documents\407110 - ASYLUM DANCE CLUB - ARCH - jpcy\miller\booth.rvt