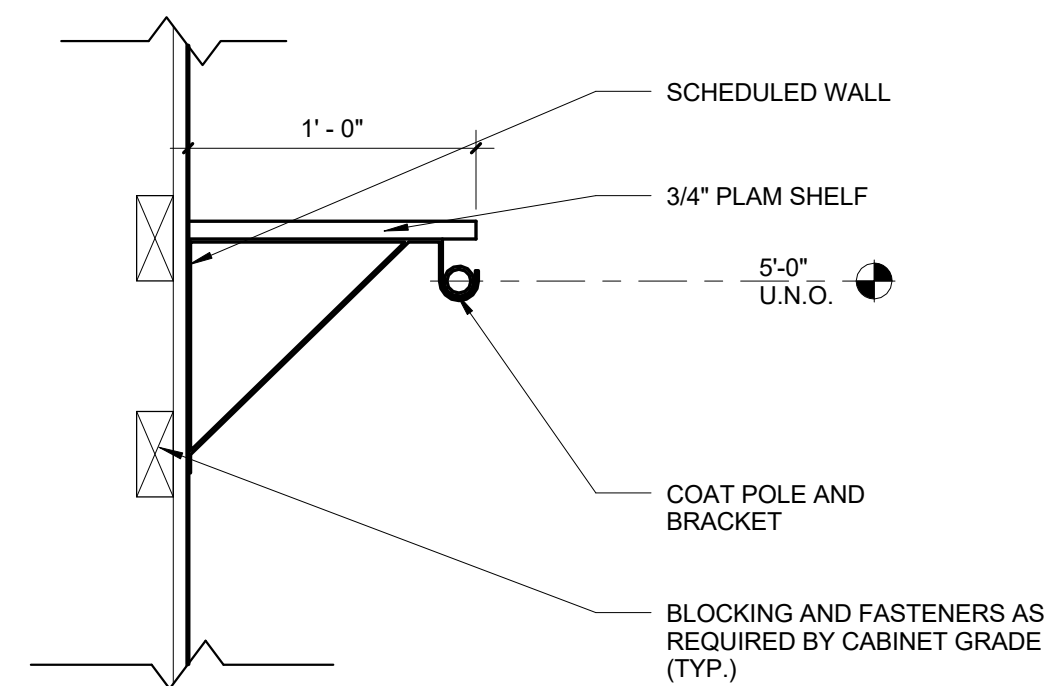


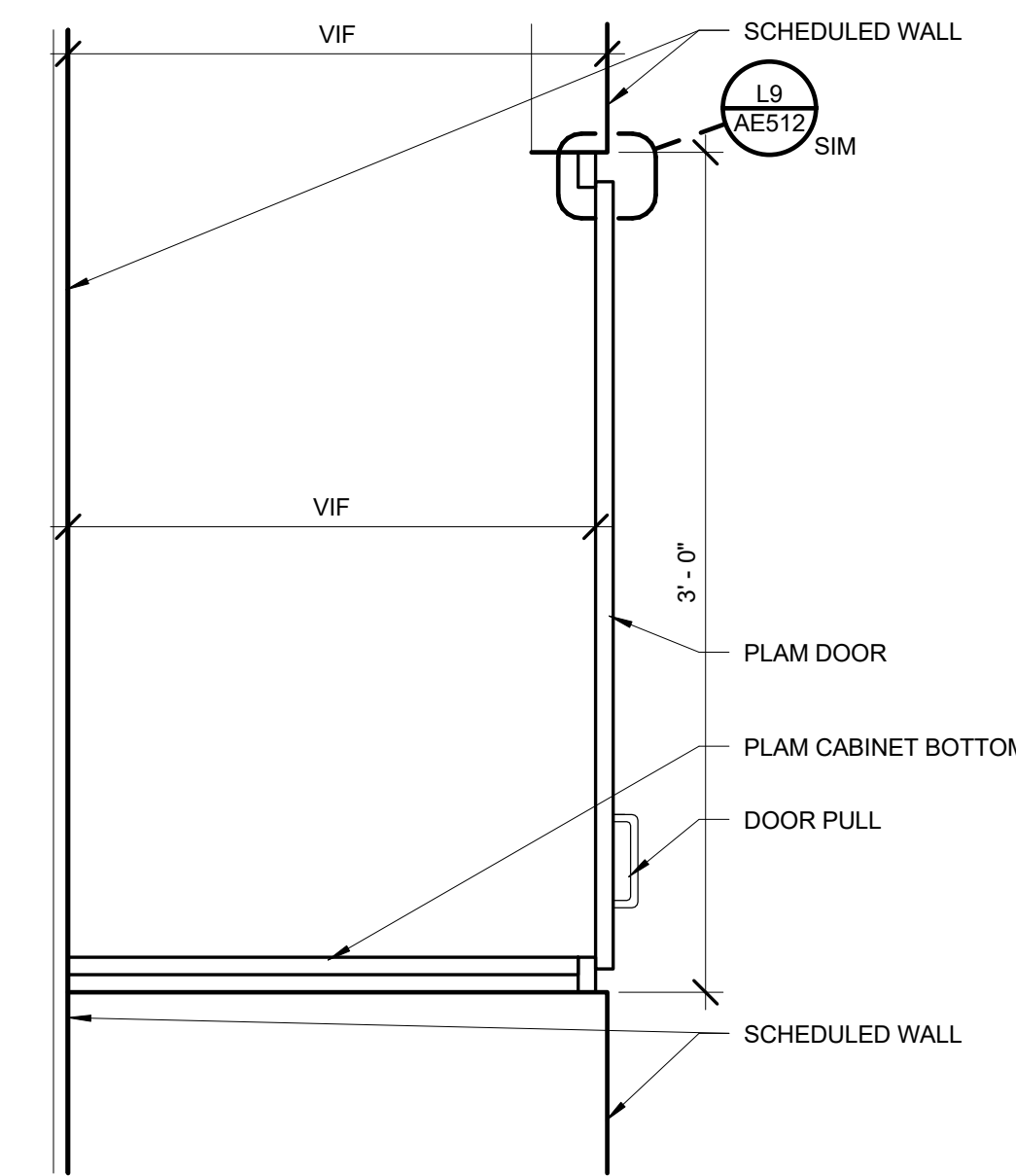
L9 RECESSED WALL CABINET DETAIL

3" = 1'-0"



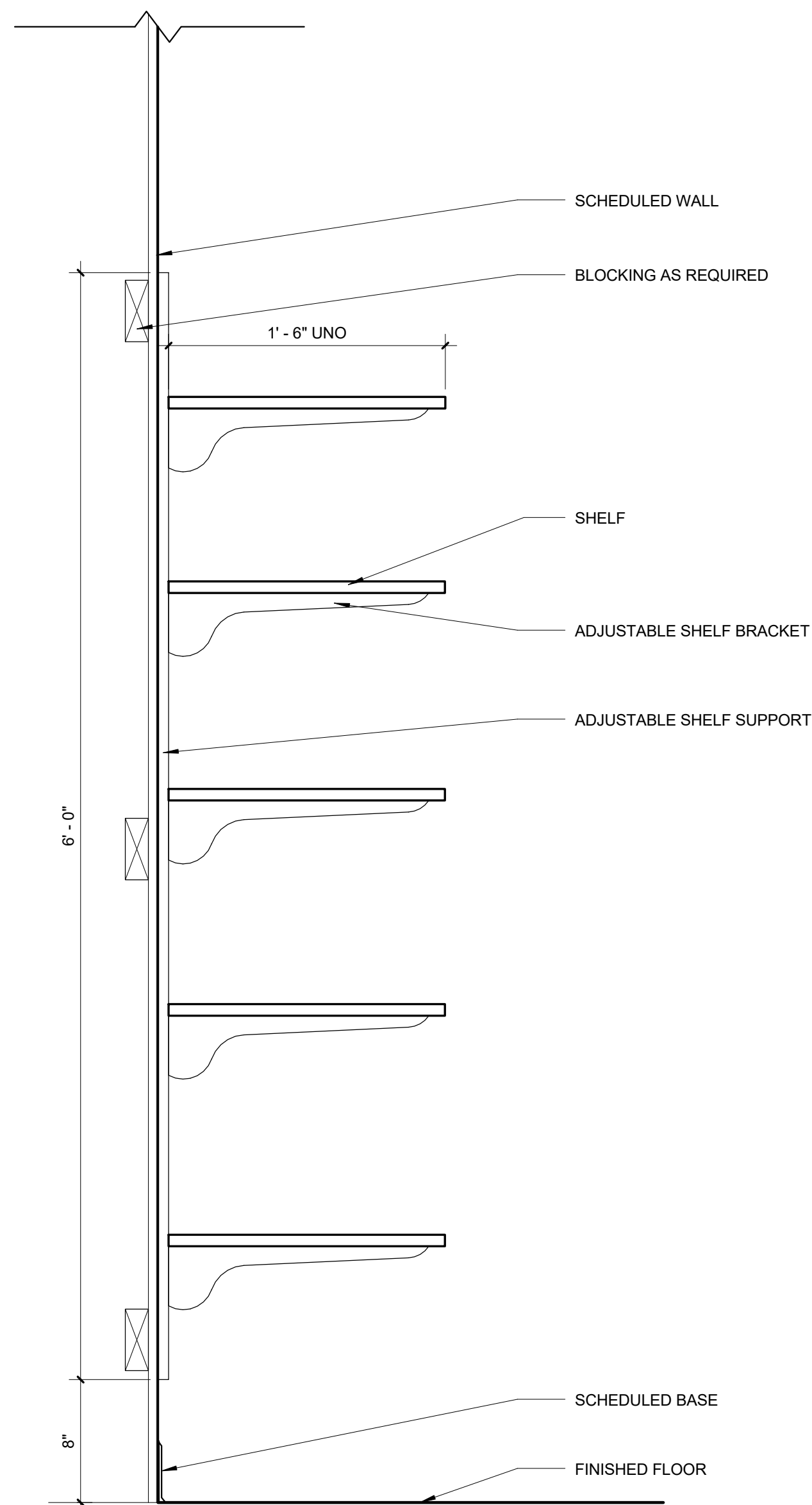
J9 COAT POLE AND SHELF

1 1/2" = 1'-0"



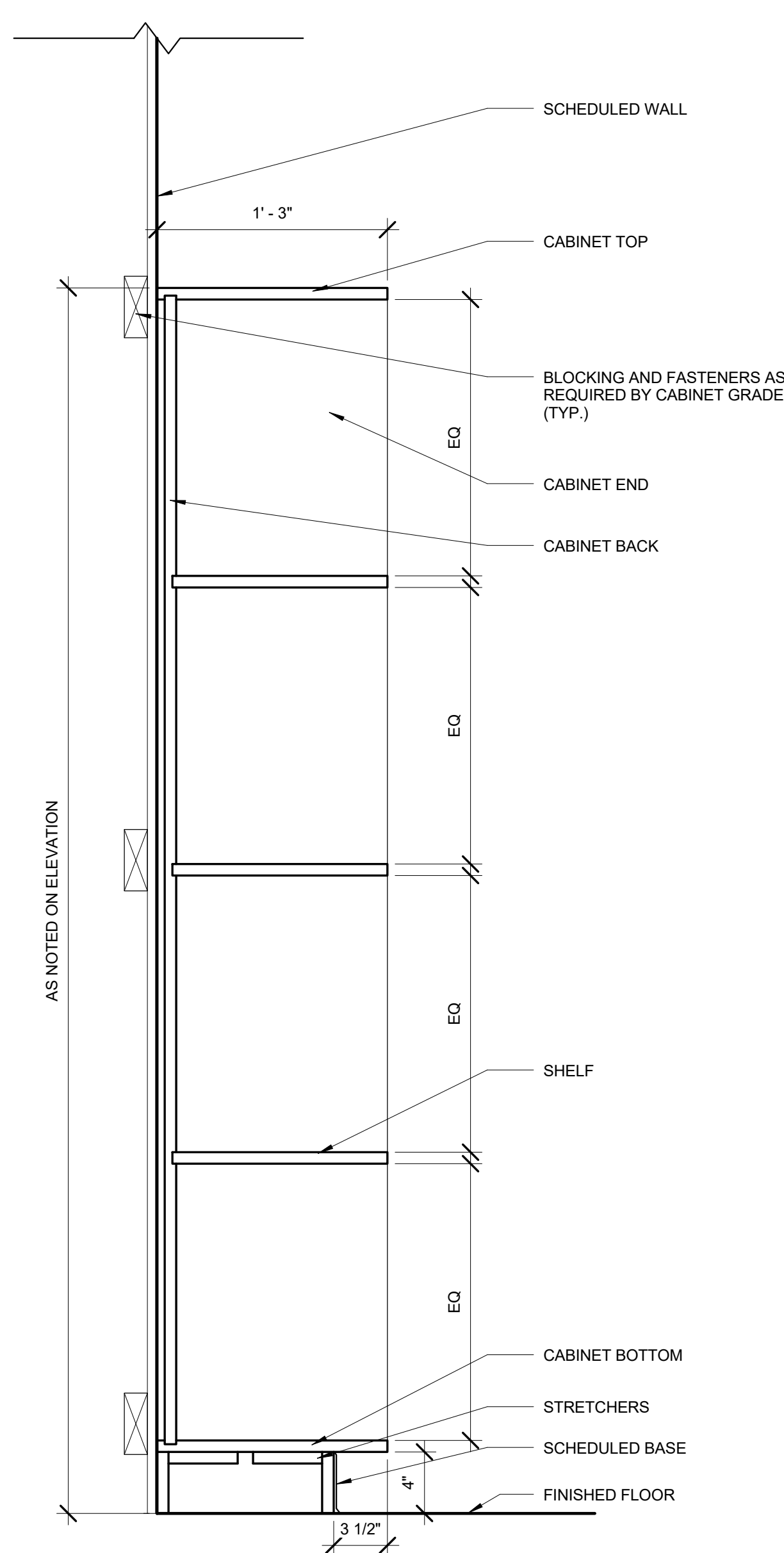
J13 RECESSED WALL CABINET

1 1/2" = 1'-0"



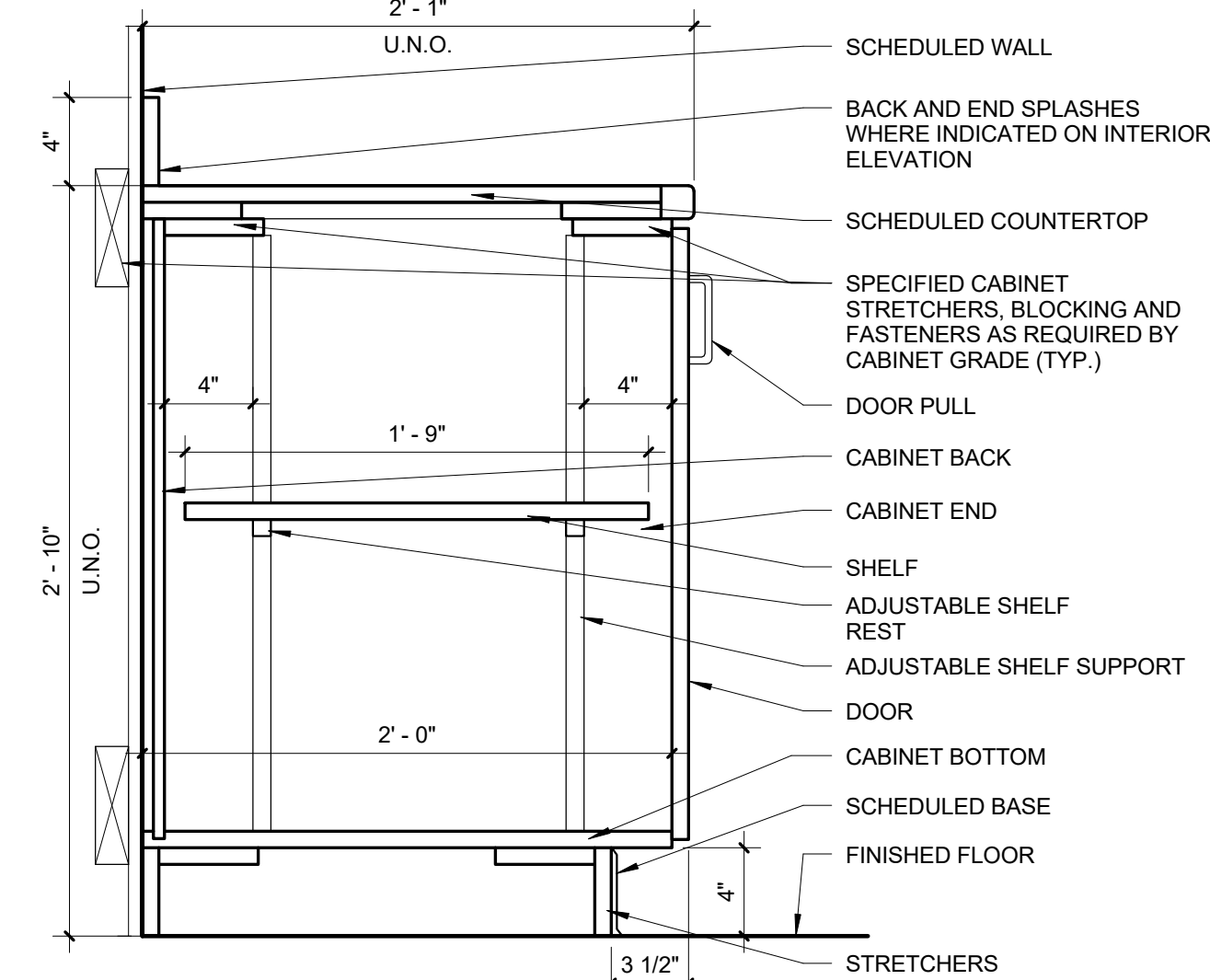
A1 ADJUSTABLE WALL SHELVES

1 1/2" = 1'-0"



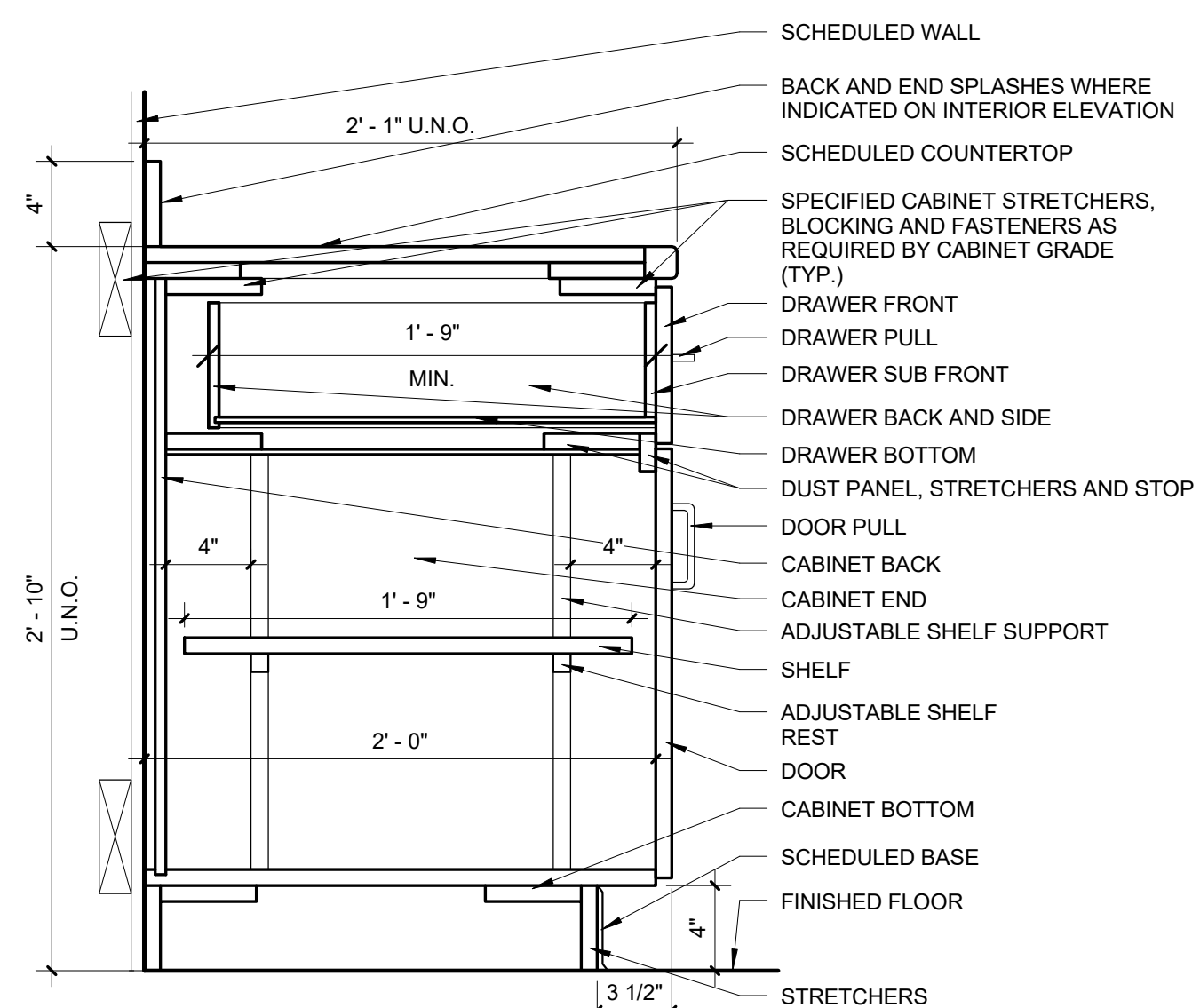
A5 TALL CABINET (OPEN)

1 1/2" = 1'-0"



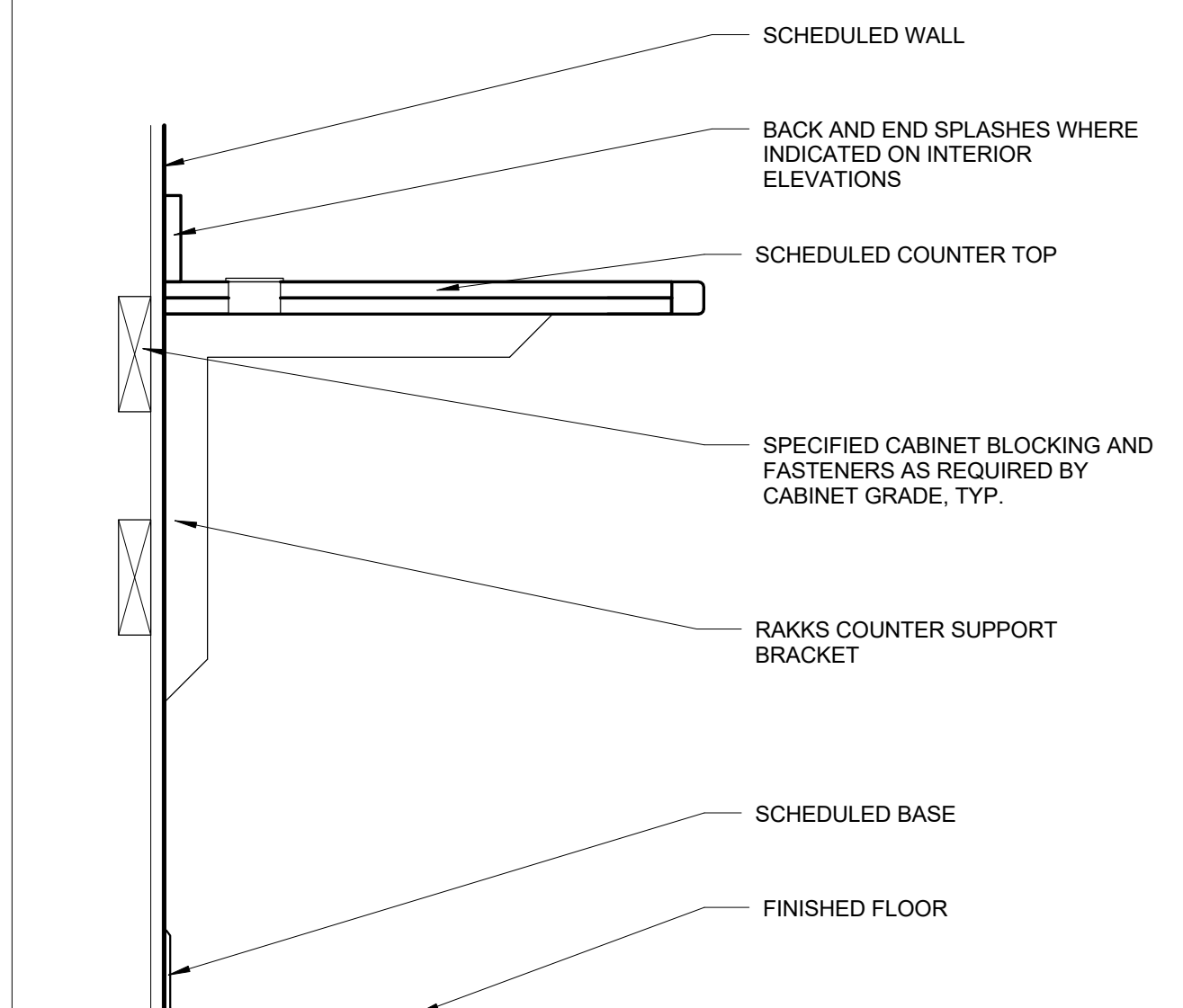
E9 BASE CABINET

1 1/2" = 1'-0"



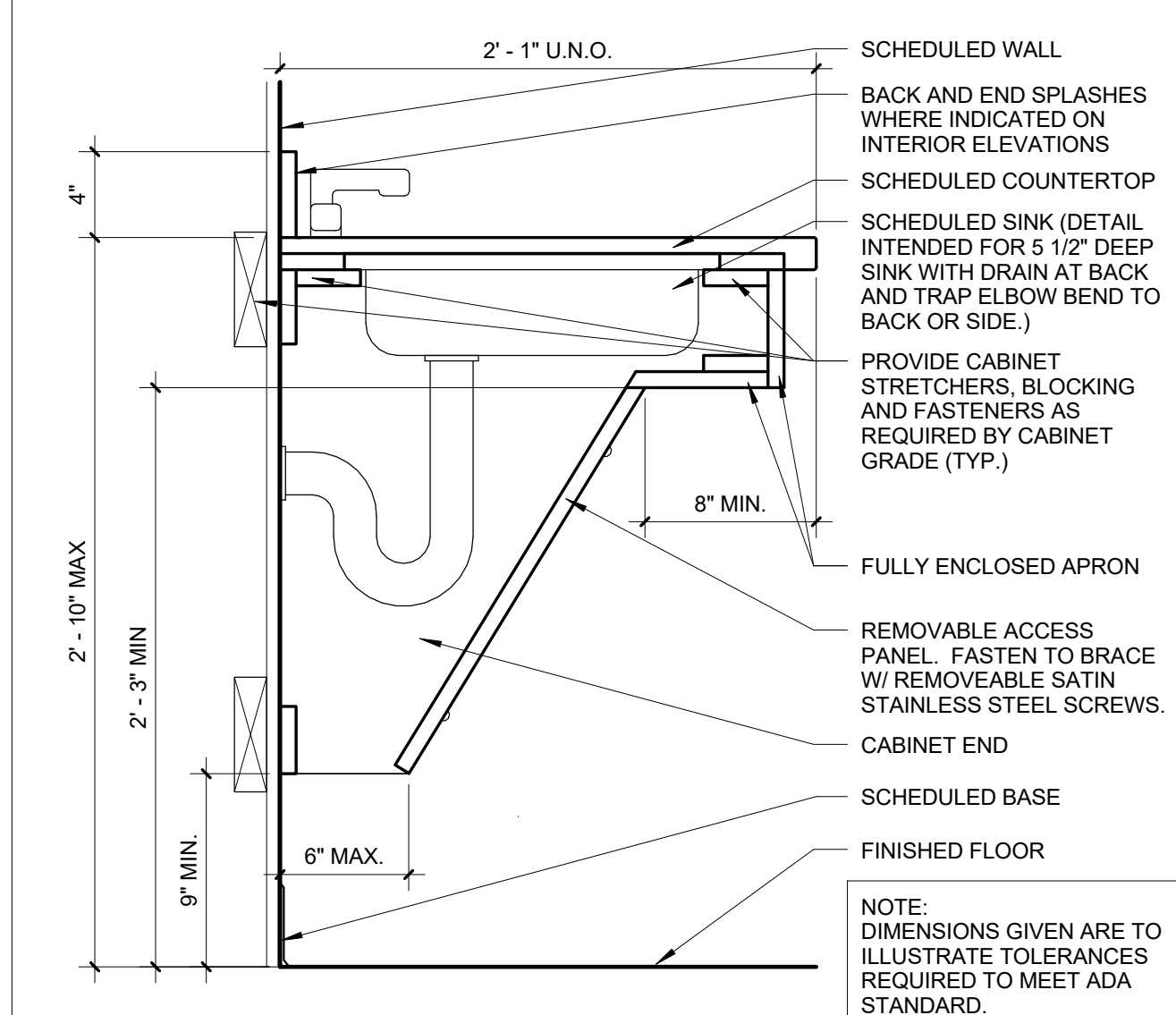
A9 BASE CABINET W/ DRAWER

1 1/2" = 1'-0"



E13 OPEN COUNTER

1 1/2" = 1'-0"



A13 ACCESSIBLE SINK COUNTER AND APRON

1 1/2" = 1'-0"

MILLWORK NOTES:

1. CABINETS AND COUNTERS ARE TO COMPLY W/ AWI PREMIUM GRADE. SEE SPEC FOR ADDITIONAL INFORMATION.
2. SEE FINISH SCHEDULE AND/OR INTERIOR ELEVATIONS FOR CABINET/COUNTER CLADDING BY ROOM.
3. PANEL CORE AND EDGE BANDING AS SPECIFIED OR IMPLIED BY AWI CABINET/COUNTER GRADE. SPEC LANGUAGE SUPERSEDES STANDARD.
4. FASTEN CABINETS AS REQUIRED BY AWI STANDARD FOR PREMIUM GRADE.
5. PROVIDE LOCKS IN LOCATIONS AS INDICATED ON INTERIOR ELEVATIONS AND/OR IN SPEC.
6. PROVIDE BACK AND END SPLASHES AT COUNTERS WITH SINKS AND AS INDICATED ON INTERIOR ELEVATIONS.
7. MATCH BACK AND END SPLASHES TO COUNTERTOP MATERIAL UNLESS NOTED OTHERWISE.
8. SCRIBE AND SEAL COUNTERS AND/OR SPLASHES TO WALL.
9. COORDINATE CABINET ENCLOSURE WITH PLUMBING DRAWINGS AND SPEC PRIOR TO FABRICATIONS. NOTIFY ARCHITECT OF DISCREPANCIES.

REV.	DESCRIPTION	DATE
0	ISSUED FOR CONSTRUCTION	06 JUNE 2016



WBRC
ARCHITECTS ENGINEERS
WWW.WBRCAE.COM
BANGOR, MAINE 207-947-4511
PORTLAND, MAINE 207-528-4511
SARASOTA, FLORIDA 941-556-0757

ASYLUM
PROJECT:
MILLWORK DETAILS

SHEET TITLE:
WBRC CAD FILE: C:\Users\jpcy\Documents\407110 - ASYLUM DANCE CLUB - ARCH - jpcy\miller\booth.rvt
PROJECT No: 4071.10
SCALE: As Indicated
PROJECT MANAGER: JRB
DRAWN BY: ARW
CHECKED BY: JLR
GRAPHIC SCALE: 0" = 1'
SHEET No:
AE512

6/7/2016 8:43:08 AM
C:\Users\jpcy\Documents\407110 - ASYLUM DANCE CLUB - ARCH - jpcy\miller\booth.rvt