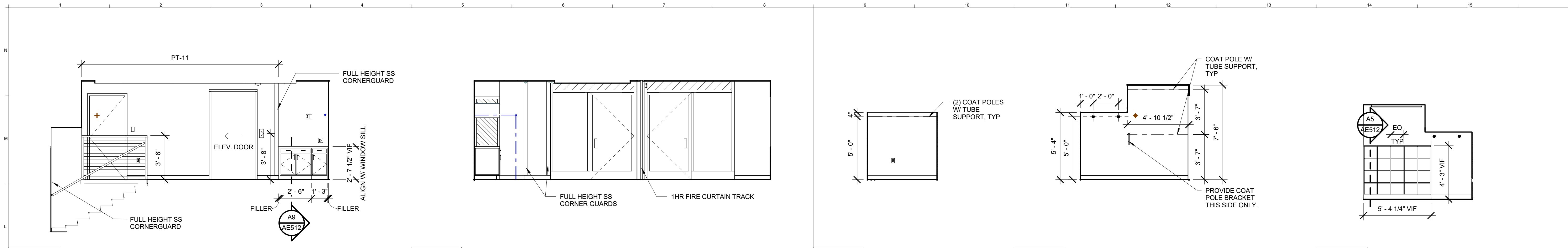


**GENERAL INTERIOR ELEVATION NOTES:**

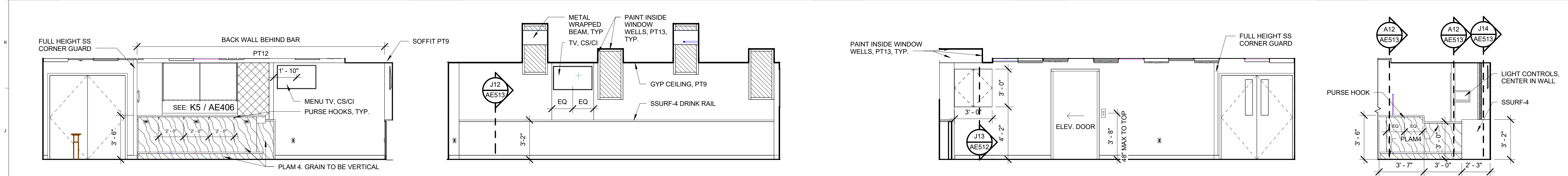
- REFER TO ARCHITECTURAL ABBREVIATIONS ON SHEET G102 FOR ALL ABBREVIATIONS.
- REFER TO H1/AE401 FOR TYPICAL TOILET AND BATH ACCESSORIES (TBA) LEGEND AND MOUNTING HEIGHT INFORMATION.
- G.C. SHALL PROVIDE AND INSTALL BLOCKING STIFFENERS, BACKING PLATES AND SUPPORTING CASEWORK (BOTH CONTRACTOR AND OWNER SUPPLIED), TOILET ACCESSORIES, VISUAL DISPLAY UNITS AND MISCELLANEOUS EQUIPMENT WHETHER SUCH SUPPORTS ARE SHOWN OR NOT. G.C. TO COORDINATE BLOCKING REQUIREMENTS OF OWNER SUPPLIED ITEMS WITH THE OWNER.
- REFER TO AE601 FOR ALL DOOR TYPES, STYLE AND FRAME STYLES.
- ALL EQUIPMENT, CASEWORK, ETC. TO BE CS/CI, UNO.
- REFER TO DIVISION 6 SPECIFICATION FOR DETAILED INFORMATION RELATED TO MILLWORK WOOD CABINETS, UNO.
- "CJ" DENOTES GWB CONTROL JOINT LOCATIONS.
- REFER TO FINISH PLANS FOR CORNER GUARD LOCATIONS.
- REFER TO FINISH PLANS AND SCHEDULES FOR COUNTERTOP MATERIAL.
- REFER TO AE405 FOR CT TILE PATTERNS.
- VERIFY ALL TOILET PARTITION DIMENSIONS IN THE FIELD BEFORE FABRICATION.

**GLAZING LEGEND:**

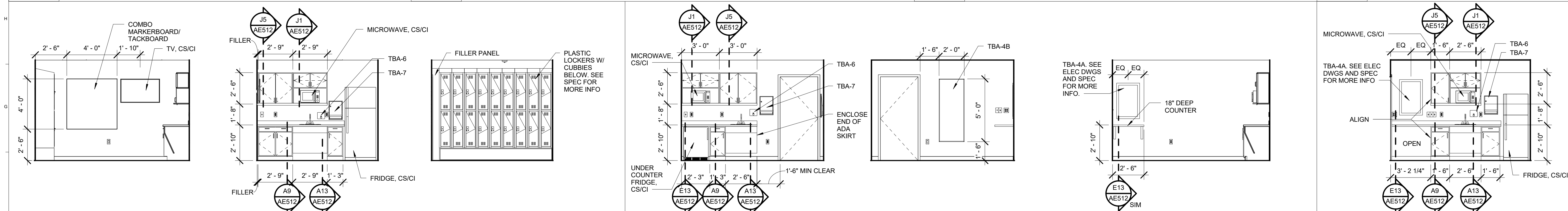
- GL-1: 1" THICK IGU IN STOREFRONT SYSTEM ST1
- GL-2: 1/4" THICK IGU IN CURTAINWALL SYSTEM CW1
- GL-3: 1/4" THICK SPANDREL PANEL CURTAINWALL SYSTEM CW1
- GL-4: FROSTED INTERIOR SINGLE PANE GLASS
- GL-5: CLEAR INTERIOR SINGLE PANE GLASS



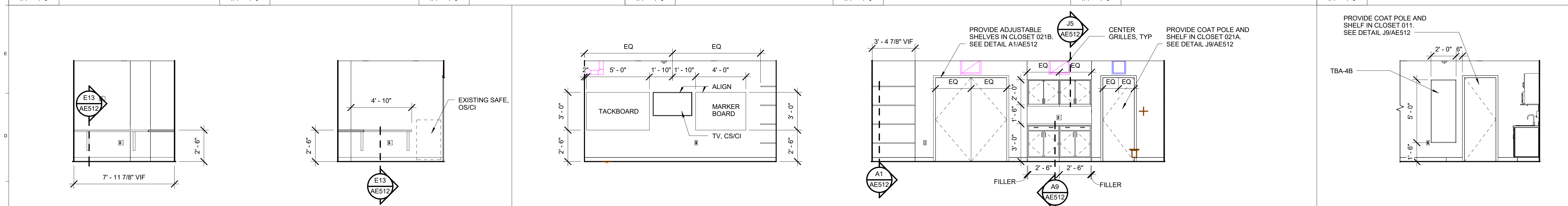
L1 001 - ENTRY - NORTH      L5 001 - ENTRY - EAST      L9 002 - COATS - NORTH      L11 002 - COATS - EAST      L14 002 - COATS - WEST



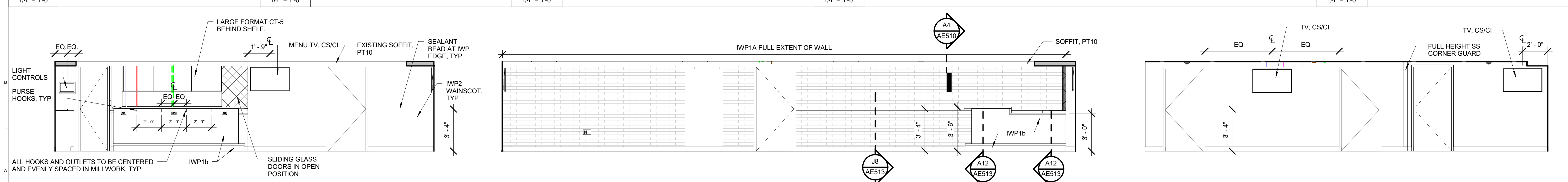
H1 004 - PREFUNCTION - NORTH      H5 004 - PREFUNCTION - EAST      H10 004 - PREFUNCTION - SOUTH      H14 004 - PREFUNCTION - BAR - WEST



F1 015 - STAFF LOUNGE - NORTH      F3 015 - STAFF LOUNGE - EAST      F5 015 - STAFF LOUNGE - WEST      F7 012 - GREEN ROOM - NORTH      K9 012 - GREEN ROOM - SOUTH      K11 012 - GREEN ROOM - WEST      F14 008 - GREEN ROOM - SOUTH

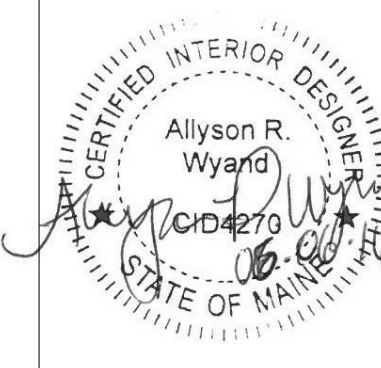


C1 023 - PRIVATE OFFICE - NORTH      C3 023 - PRIVATE OFFICE - EAST      C6 021 - OFFICE - EAST      C9 021 - OFFICE - SOUTH      C14 008 - GREEN ROOM - EAST



A1 024 - DANCE FLOOR - SOUTH      A5 024 - DANCE FLOOR - EAST      A12 024B - DJ/STAGE

| REV. | DESCRIPTION             | DATE         |
|------|-------------------------|--------------|
| 0    | ISSUED FOR CONSTRUCTION | 06 JUNE 2016 |



**WBRC**  
ARCHITECTS ENGINEERS

WWW.WBRCAE.COM  
BANGOR, MAINE 207-947-4511  
PORTLAND, MAINE 207-528-4511  
SARASOTA, FLORIDA 941-556-0757

**ASYLUM**

PROJECT:  
**INTERIOR ELEVATIONS**

SHEET TITLE:  
WBRC CAD FILE: C:\Users\jocelyn.booth\Documents\407110 - ASYLUM DANCE CLUB - ARCH - jocelyn.booth.rvt

PROJECT No: 4071.10      GRAPHIC SCALE: 0" = 1"  
SCALE: As Indicated      SHEET No:

PROJECT MANAGER: JRB      DRAWN BY: ARW      CHECKED BY: JLR

**AE205**

6/7/2016 8:33:04 AM C:\Users\jocelyn.booth\Documents\407110 - ASYLUM DANCE CLUB - ARCH - jocelyn.booth.rvt