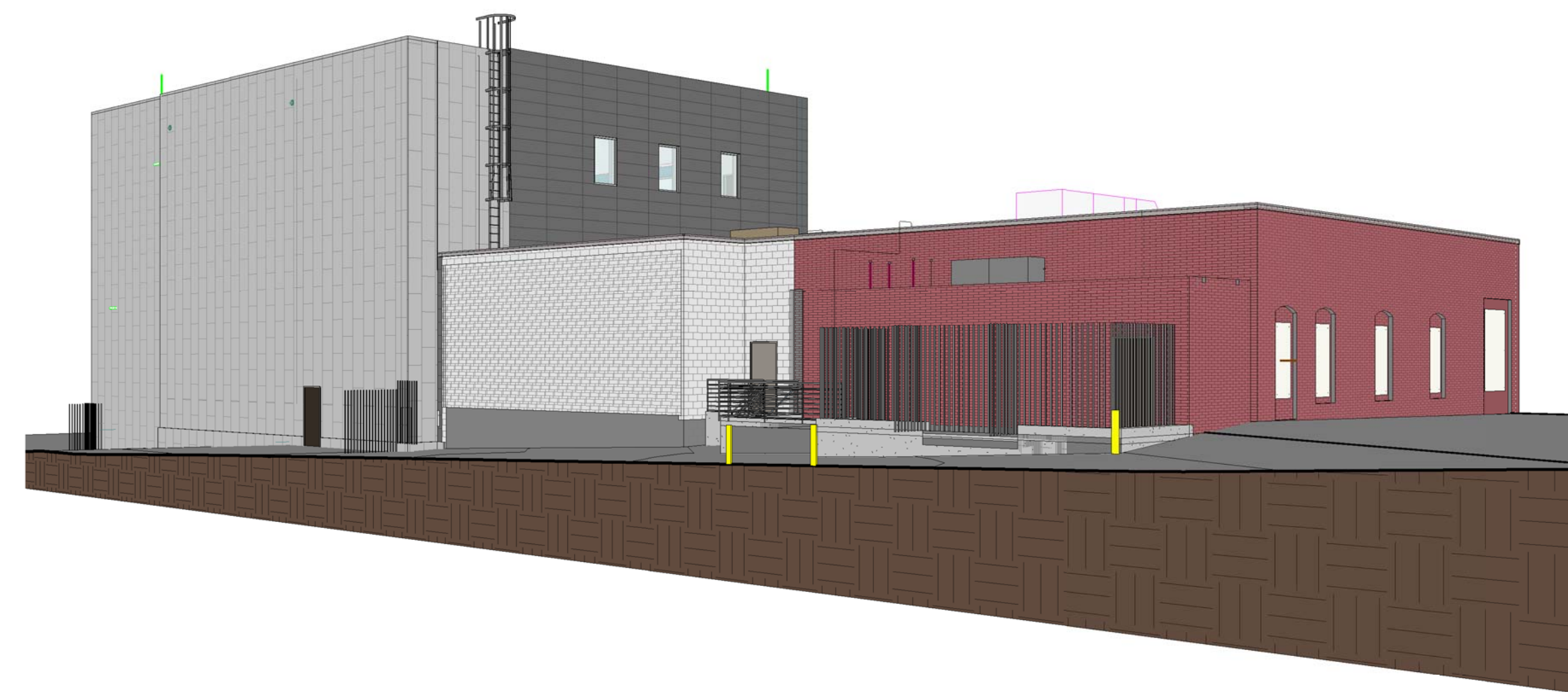


BUILDING
PERSPECTIVES FOR
REFERENCE ONLY



G1 EAST PERSPECTIVE



G9 NORTH PERSPECTIVE

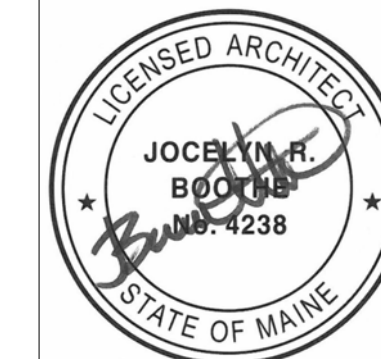


A1 SOUTH PERSPECTIVE



A9 WEST PERSPECTIVE

REV.	DESCRIPTION	DATE
0	ISSUED FOR CONSTRUCTION	06 JUNE 2016



WBRC
ARCHITECTS ENGINEERS
WWW.WBRCAE.COM
BANGOR, MAINE 207-947-4511
PORTLAND, MAINE 207-528-4511
SARASOTA, FLORIDA 941-556-0757

PROJECT:
ASYLUM
BUILDING PERSPECTIVES

SHEET TITLE:
WBRC CAD FILE: C:\Users\jocelyn.booth\Documents\407110 - ASYLUM DANCE CLUB - ARCH - jocelyn.booth.rvt
PROJECT No: 4071.10 GRAPHIC SCALE: 0' 1'
SCALE: PROJECT MANAGER: JRB SHEET No: **AE201**
DRAWN BY: JRB CHECKED BY: JET/MEJ

6/7/2016 8:30:58 AM C:\Users\jocelyn.booth\Documents\407110 - ASYLUM DANCE CLUB - ARCH - jocelyn.booth.rvt