

- PL 1/2"x1 1/2" SQ W/ (1) 9/16" Ø HOLE W/(1) 1/2" Ø THRU BOLT
- PL 1/2"x3 3/4"x0'-6"
- (6) 7/8" Ø THRU BOLTS IN 15/16" Ø HOLES - TYP. (2) LOCATIONS @ TOP CHORD ENDS
- EXISTING FRAMING TO BE HEADERED OFF WHERE NECESSARY IN ORDER TO INSTALL PLATE CONNECTORS - TYP.
- 2" Ø x0'-2" SCH 80 PIPE
- PL 3/4"x8"x1'-4" W/ (6) 15/16" Ø HOLES
- NEW 4x6 POST EACH SIDE OF <E> STEEL ROD

- 1/4" THICK x 3" WIDE STEEL TRUSS PLATE W/ (2) 5/8" Ø THRU BOLTS IN 1 1/16" Ø HOLES IN EACH MEMBER - TYP. (4) LOCATIONS
- TOP CHORD OF <E> TRUSS, SIZE VARIES
- WEB MEMBER OF <E> TRUSS, SIZE VARIES
- TURNBUCKEL AS NEEDED TO TENSION CABLE ASSEMBLY
- BOTTOM CHORD OF <E> TRUSS, SIZE VARIES

STEEL CABLE OR WIRE ROPE ASSEMBLY W/ WORKING CAPACITY OF 11 KIPS. SUBMIT MATERIALS/COMPONENTS FOR REVIEW BY ENGINEER

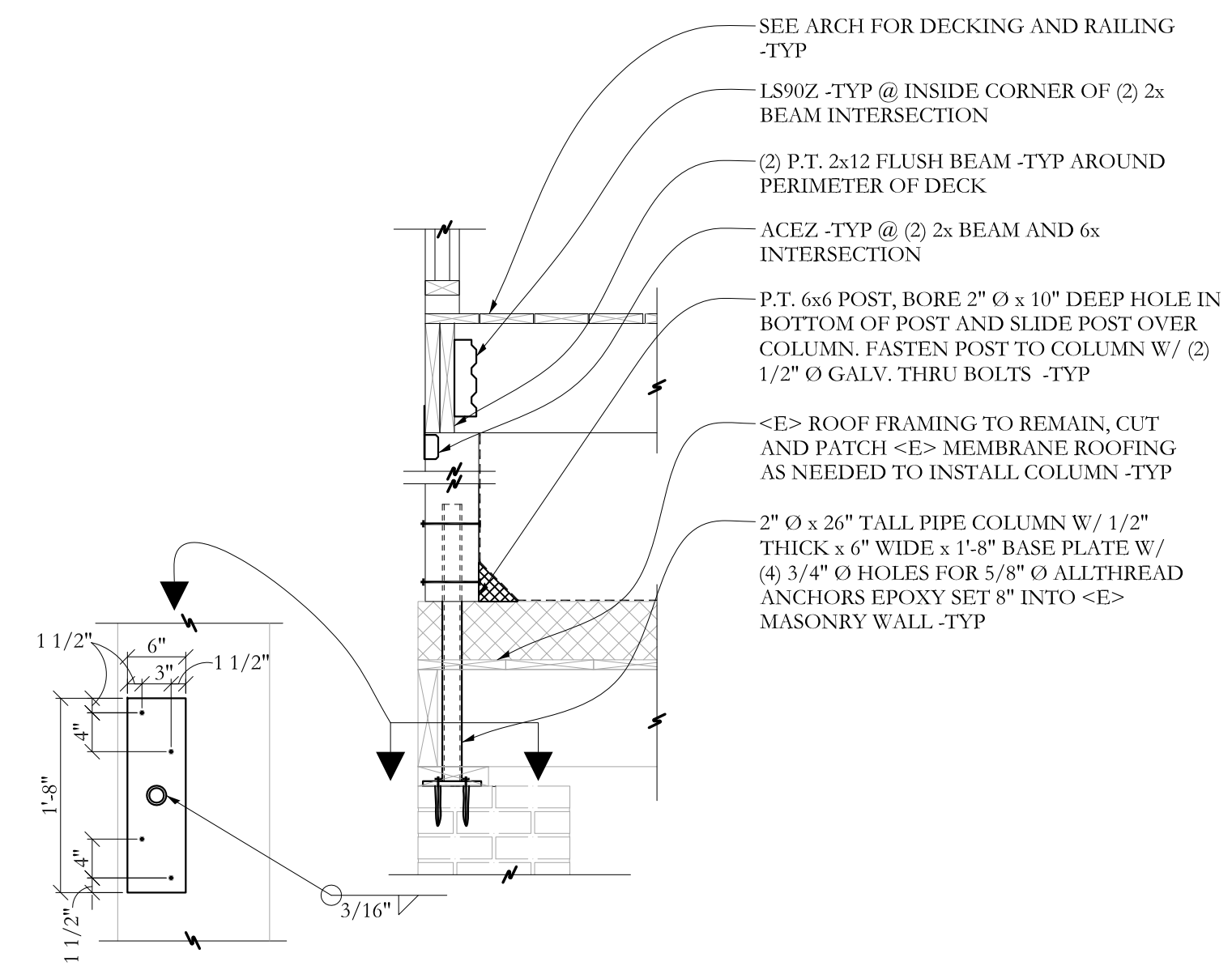
<E> BRICK B.W. TO REMAIN

SHORE TRUSSES WHILE MODIFYING CONNECTIONS

NOTE: REMOVE SMALL STEEL PLATE AND THRU BOLT NUTS. MATCH DRILL CHANNEL IN FIELD THEN BOLT UP CHANNEL

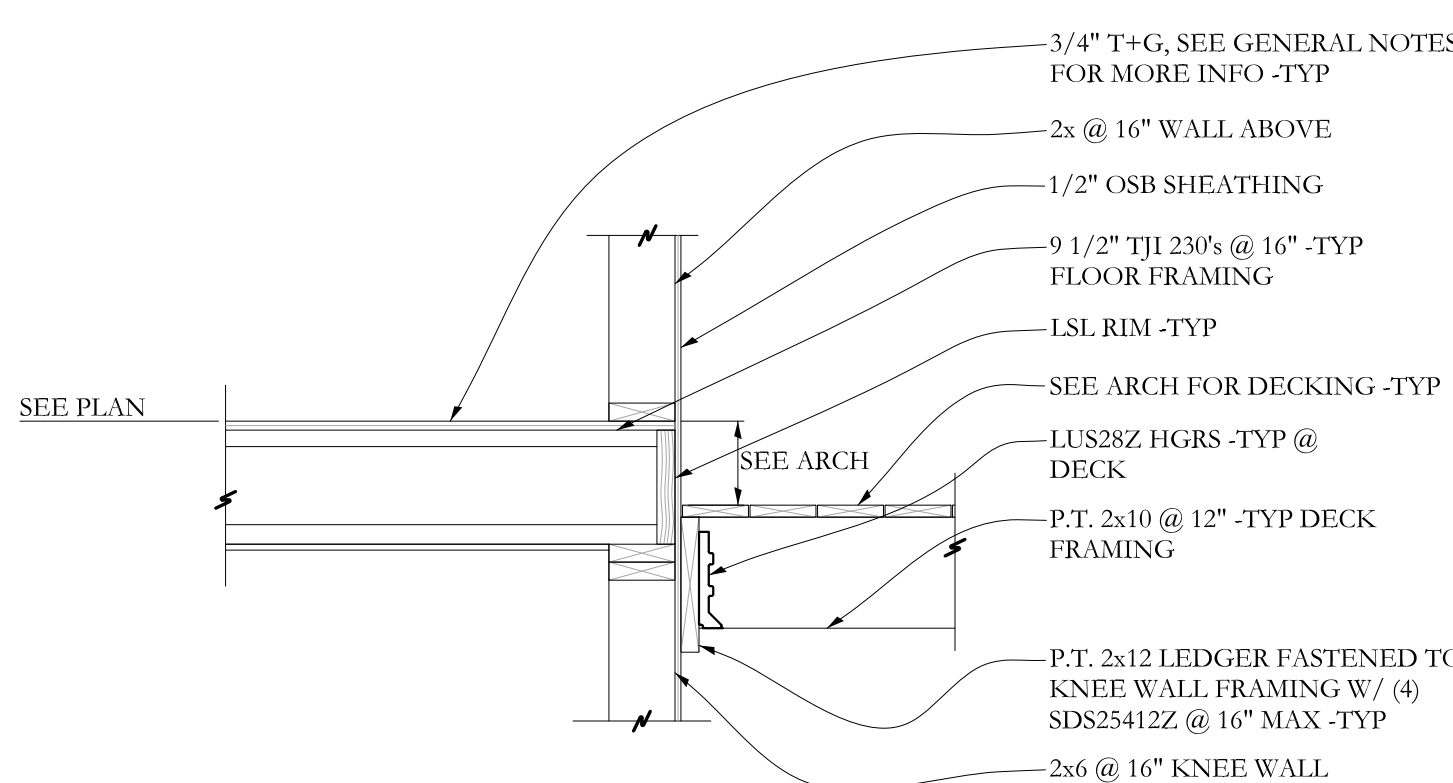
NOTE: SEE S/S2.3 FOR PLATE SHAPES AND DIMENSIONS

SECTION **M** S2.2 3/4"=1'-0



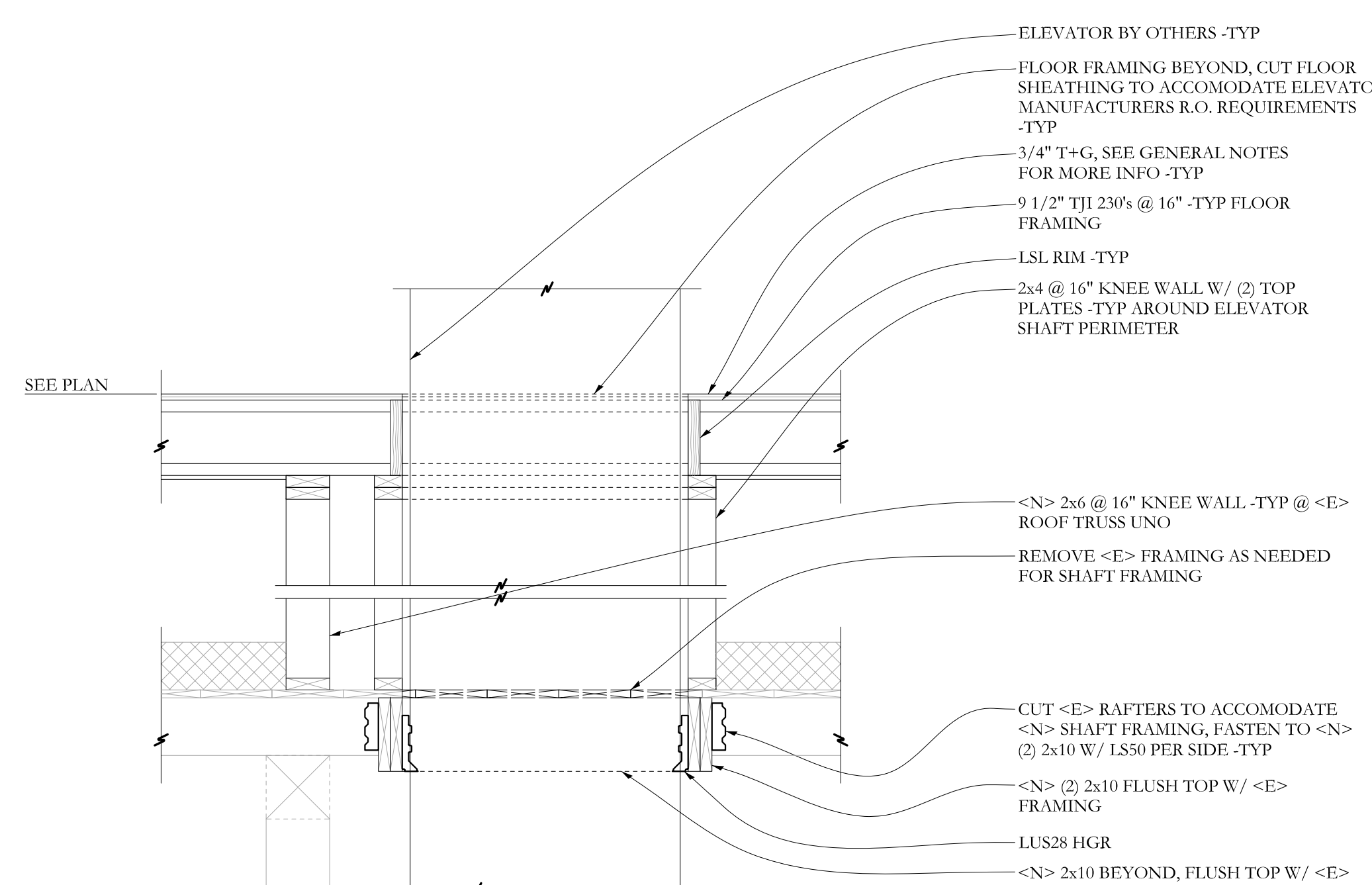
- SEE ARCH FOR DECKING AND RAILING -TYP
- LS90Z -TYP @ INSIDE CORNER OF (2) 2x BEAM INTERSECTION
- (2) P.T. 2x12 FLUSH BEAM -TYP AROUND PERIMETER OF DECK
- ACEZ -TYP @ (2) 2x BEAM AND 6x INTERSECTION
- P.T. 6x6 POST, BORE 2" Ø x 10" DEEP HOLE IN BOTTOM OF POST AND SLIDE POST OVER COLUMN. FASTEN POST TO COLUMN W/ (2) 1/2" Ø GALV. THRU BOLTS -TYP
- <E> ROOF FRAMING TO REMAIN, CUT AND PATCH <E> MEMBRANE ROOFING AS NEEDED TO INSTALL COLUMN -TYP
- 2" Ø x 26" TALL PIPE COLUMN W/ 1/2" THICK x 6" WIDE x 1'-8" BASE PLATE W/ (4) 3/4" Ø HOLES FOR 5/8" Ø ALLTHREAD ANCHORS EPOXY SET 8" INTO <E> MASONRY WALL -TYP

SECTION **H** S2.2 3/4"=1'-0



- 3/4" T+G, SEE GENERAL NOTES FOR MORE INFO -TYP
- 2x @ 16" WALL ABOVE
- 1/2" OSB SHEATHING
- 9 1/2" TJI 230s @ 16" -TYP FLOOR FRAMING
- LSL RIM -TYP
- SEE ARCH FOR DECKING -TYP
- LUS28Z HGRS -TYP @ DECK
- P.T. 2x10 @ 12" -TYP DECK FRAMING
- P.T. 2x12 LEDGER FASTENED TO KNEE WALL FRAMING W/ (4) SDS25412Z @ 16" MAX -TYP
- 2x6 @ 16" KNEE WALL

SECTION **J** S2.2 3/4"=1'-0



- ELEVATOR BY OTHERS -TYP
- FLOOR FRAMING BEYOND, CUT FLOOR SHEATHING TO ACCOMMODATE ELEVATOR MANUFACTURERS R.O. REQUIREMENTS -TYP
- 3/4" T+G, SEE GENERAL NOTES FOR MORE INFO -TYP
- 9 1/2" TJI 230s @ 16" -TYP FLOOR FRAMING
- LSL RIM -TYP
- 2x4 @ 16" KNEE WALL W/ (2) TOP PLATES -TYP AROUND ELEVATOR SHAFT PERIMETER
- <N> 2x6 @ 16" KNEE WALL -TYP @ <E> ROOF TRUSS UNO
- REMOVE <E> FRAMING AS NEEDED FOR SHAFT FRAMING
- CUT <E> RAFTERS TO ACCOMMODATE <N> SHAFT FRAMING, FASTEN TO <N> (2) 2x10 W/ L/S50 PER SIDE -TYP
- <N> (2) 2x10 FLUSH TOP W/ <E> FRAMING
- LUS28 HGR
- <N> 2x10 BEYOND, FLUSH TOP W/ <E> FRAMING -TYP

SECTION **K** S2.2 3/4"=1'-0

