

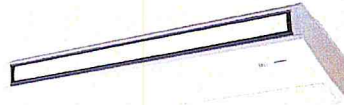
SUBMITTAL DATA: PCA-A36KA4 & PUZ-A36NHA4 (-BS)

36,000 BTU/H CEILING-SUSPENDED HEAT-PUMP SYSTEM

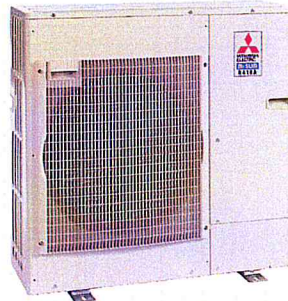
Job Name: Portland Public Market

System Reference: Typical for (2) systems

Date: 8/1/15



Indoor Unit: PCA-A36KA4



Outdoor Unit: PUZ-A36NHA4 (-BS)

GENERAL FEATURES

- Ceiling-suspended indoor unit for residential and commercial applications
- Shiny white cabinet; compact design
- Standard air filter is included with indoor unit; High-efficiency filter is available as an option
- Quiet operation—both indoor and outdoor units
- Self-check function—integrated diagnostics
- Limited warranty:
 - Five years parts and seven years compressors

UNIT OPTION

- Standard Model.....PUZ-A36NHA4
- Sea Coast (BS) Model.....PUZ-A36NHA4-BS

ACCESSORIES
Indoor Unit

- Condensate Pump (BlueDiamond X87-711/721; 115/230V)
- Condensate Pump (Sauermann SI30-115/230; 115/230V)
- Mini Condensate Pump (PAC-SH84DM, 230V)
- High-efficiency Filter (PAC-SH89KF)
- i-see Sensor with Mount (PAC-SH91MK-E)

Outdoor Unit

- Drain Pan (PAC-SG64DP)
- Drain Socket (PAC-SH71DS-E)
- Three-pole Disconnect Switch (TAZ-MS303)
- Wind Baffle (WB-PA2)
- Air Outlet Guide (PAC-SG59SG)
- Mounting Base (DSD-400N)
- Mounting Pad (ULTRILITE2)
- Wall-mounting Brackets (CWMB1)

Controller Options

- Wireless Wall-mounted Remote Controller Kit (MHK1)**
 - Portable Central Controller (MCCH1)**
 - Outdoor Air Sensor (MOS1)**
 - Wired Wall-mounted Controller (PAR-31MAA)**
 - Simple MA Remote Controller (PAC-YT53CRAU)**
- **See Submittal for information on each option.
- M-NET Adapter (PAC-SF83MA)
 - CN51 Connector for Multiple Remote Controller Adapters Duct Fan Controller (PAC-725AD)
 - CN32 Connector for Remote On/Off (PAC-715AD)
 - Remote Temperature Sensor (PAC-SE41TS)
 - Remote Operation Adapter - Display and On/Off (PAC-SF40RM)
 - Wireless Remote Controller Kit (PAR-SL93B)
 - i-See Sensor and Wireless Remote Controller Kit (PAR-SA92MW)
 - Lockdown Bracket for Handheld Controller (RCMKP1CB)
 - Control/Service Tool (PAC-SK52ST)

SEACOAST PROTECTION

- External Outer Panel:
 - Phosphate coating + Acrylic-Enamel coating
- Fan Motor Support:
 - Epoxy resin coating (at edge face)
- Separator Assembly ; Valve Bed:
 - Epoxy resin coating (at edge face)
- Screws (used outer side):
 - Zinc nickel coating 5µm + Polyvinylidene chloride coating

"Blue Fin" treatment is an anti-corrosion treatment that is applied to the condenser coil to protect it against airborne contaminants..



DIMENSIONS: PUZ-A36NHA4 (-BS)

Unit: mm (inch)

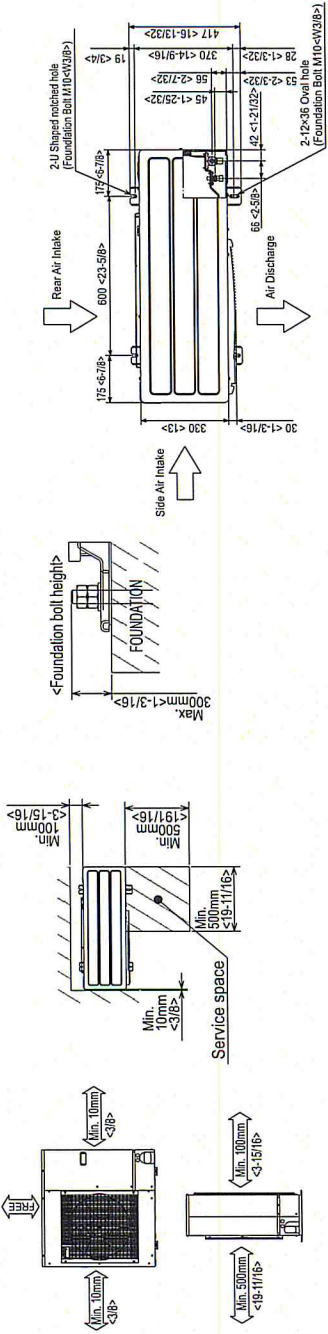
1 FREE SPACE (Around the unit) **2 SERVICE SPACE** **3 FOUNDATION BOLTS** **4 PIPING-WIRING DIRECTIONS**

The diagram below shows a basic example. Expansion of particular details are given in the installation manuals etc.

Dimensions of space needed for service access are shown in the below diagram.

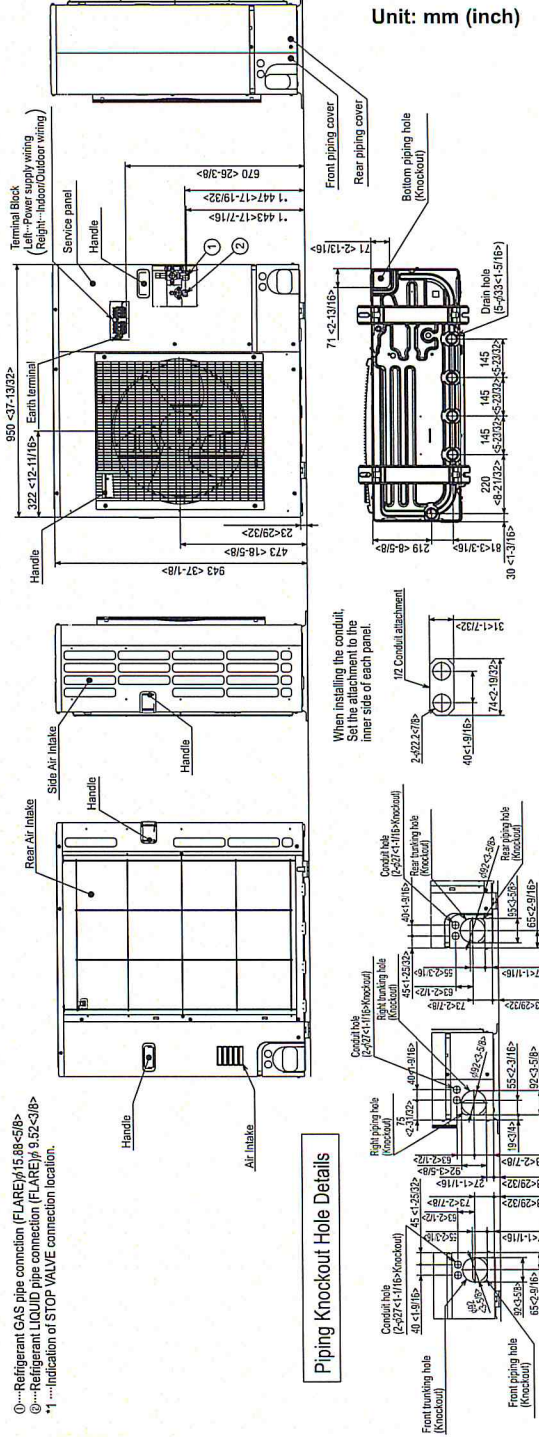
Please secure the unit firmly with 4 foundation (M10<W3/8>) bolts. (Bolts and washers must be purchased locally)

Piping and wiring connections can be made from 4 directions: front, right, rear and below.

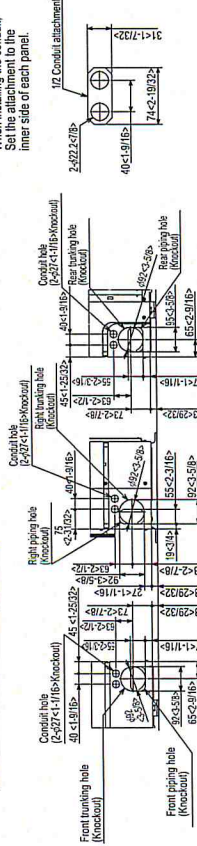


Example of Notes

- ①...Refrigerant GAS pipe connection (FLARE)φ15.88<φ1/2>
- ②...Refrigerant LIQUID pipe connection (FLARE)φ9.52<φ3/8>
- *1 ...Indication of STOP VALVE connection location.



Piping Knockout Hole Details



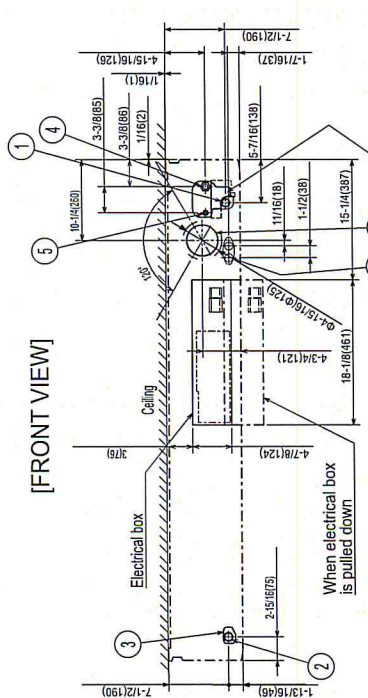
1340 Satellite Boulevard
Suwanee, GA 30024
Toll Free: 800-433-4822
www.mehvac.com

DIMENSIONS: PCA-A36KA4

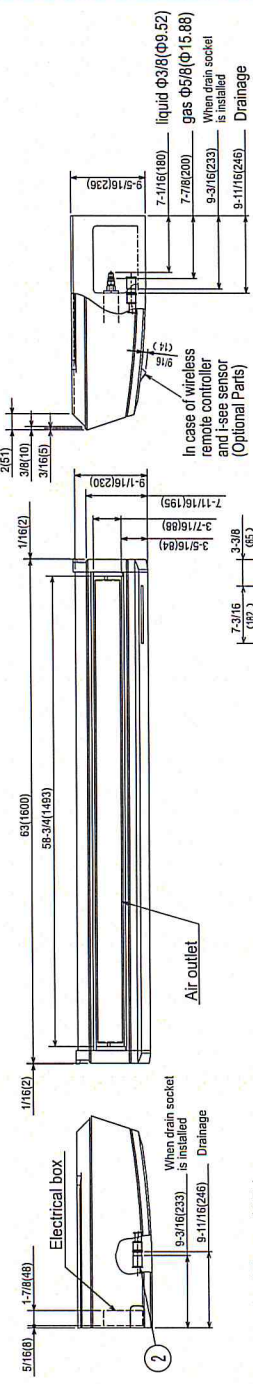
Unit: inch (mm)

NOTES.

1. Use M10 or W3/8 screw for anchor bolt.
2. Please be sure when installing the drain lift up mechanism (option parts), refrigerant pipe will be only upward.

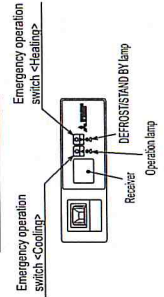


If the piping is installed in the back of the unit, remove the shaded portions from the component at right. Then, reinstall the component in its original position (the heat exchanger might be clogged because of dust).



- ① Drainage pipe connection (1(26mm) I.D.)
 - ② Drainage pipe connection (for the left arrangement)
 - ③ Knockout hole for left drain-piping arrangement
 - ④ Refrigerant-pipe connection (gas pipe side/flared connection)
 - ⑤ Refrigerant-pipe connection (liquid pipe side/flared connection)
 - ⑥ Knockout hole for upper drain pipe arrangement
 - ⑦ Knockout hole for ventilation air intake Φ 3-15/16 (Φ100)
 - ⑧ Knockout hole for wiring arrangement Φ 7/8 (Φ22)
- Accessory... Drain socket (1(26mm) I.D.)

In case of wireless remote controller and i-see sensor (Optional Parts)



SPECIFICATIONS : PCA-A36KA4 & PUZ-A36NHA4 (-BS)

Cooling*

Rated Capacity	35,000 Btu/h
Minimum Capacity	12,000 Btu/h
SEER	14.4 Btu/h/W
EER	7.6 Btu/h/W
Total Input	4,630 W

Heating at 47°F*

Rated Capacity	37,000 Btu/h
Minimum Capacity	12,000 Btu/h
HSPF (IV)	10.2 Btu/h/W
COP	3.40
Total Input	3,190 W

Heating at 17°F*

Rated Capacity	25,000 Btu/h
Total Input	2,800 W
COP	2.62

* Rating Conditions per AHRI Standard

Cooling | Indoor: 80° F (27° C) DB / 67° F (19° C) WB
 Cooling | Outdoor: 95° F (35° C) DB / 75° F (24° C) WB
 Heating at 47° F | Indoor: 70° F (21° C) DB / 60° F (16° C) WB
 Heating at 47° F | Outdoor: 47° F (8° C) DB / 43° F (6° C) WB
 Heating at 17° F | Indoor: 70° F (21° C) DB / 60° F (16° C) WB
 Heating at 17° F | Outdoor: 17° F (-8° C) DB / 15° F (-9° C) WB

Electrical Requirements

Power Supply 208 / 230V, 1-Phase, 60 Hz
 Recommended Fuse/Breaker Size 30 A

Voltage

Indoor - Outdoor S1-S2 AC 208 / 230V
 Indoor - Outdoor S2-S3 DC ±24V

OPERATING CONDITIONS

		Indoor Intake Air Temp.	Outdoor Intake Air Temp.
Cooling	Maximum	95° F (35° C) DB 71° F (22° C) WB	115° F (46° C) DB
	Minimum	67° F (19° C) DB 57° F (14° C) WB	0° F** (-18° C) DB
Heating	Maximum	80° F (27° C) DB 67° F (19° C) WB	70° F (21° C) DB 59° F (15° C) WB
	Minimum	70° F (21° C) DB 60° F (16° C) WB	12° F (-11° C) DB 10° F (-12° C) WB

** With optional wind baffle accessory installed. If not installed, the minimum temperature will be 23°F (-5°C) DB.

Indoor Unit

MCA	2 A
Blower Motor (ECM)	0.97 F.L.A.
Blower Motor Output	160 W
Airflow (Lo - Mid1 - Mid2 - Hi)	775 - 850 - 920 - 990 Dry CFM 705 - 775 - 850 - 920 Wet CFM
Air Filter	Polypropylene Honeycomb
Sound Pressure Level (Lo - Mid1 - Mid2 - Hi)	37 - 39 - 41 - 43 dB(A)
SHF	0.73
Moisture Removal	8.5 pt./h

DIMENSIONS	UNIT INCHES / MM
W	63 / 1,600
D	26-3/4 / 680
H	9-1/16 / 230

Weight 79 lbs. / 36 kg
 External Finish Munsell No. 6.4Y 8.9 / 0.4
 Field Drainpipe Size O.D. 1-1/16" / 26 mm

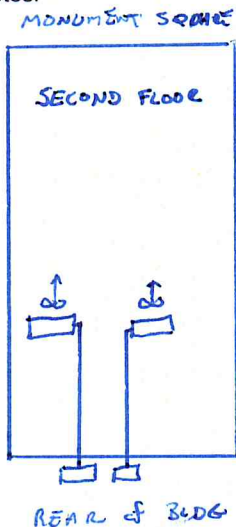
Outdoor Unit

Compressor	DC Inverter-driven Twin Rotary
MCA	25 A
MOCP	40 A
Fan Motor (ECM)	0.75 F.L.A.
Sound Pressure Level	
Cooling	48 dB(A)
Heating	50 dB(A)

DIMENSIONS	INCHES / MM
W	37-3/8 / 950
D	13 + 1-3/16 / 330 + 30
H	37-1/8 / 943

Weight 165 lbs. / 75 kg
 External Finish Munsell No. 3Y 7.8 / 1.1
 Refrigerant Type R410A
 Refrigerant Pipe Size O.D.
 Gas Side 5/8" / 15.88 mm
 Liquid Side 3/8" / 9.52 mm
 Max. Refrigerant Pipe Length 165' / 50 m
 Max. Refrigerant Pipe Height Difference 100' / 30 m
 Connection Method Flared

Notes:



*INDOOR UNITS WILL BE SUSPENDED FROM OVERHEAD BEAMS
 OUTDOOR UNITS MOUNTED ON WALL BRACKETS. UNITS WILL BE
 LOCATED TO AVOID OBSTRUCTING TRAFFIC AND TO PREVENT
 VANDALISM.*