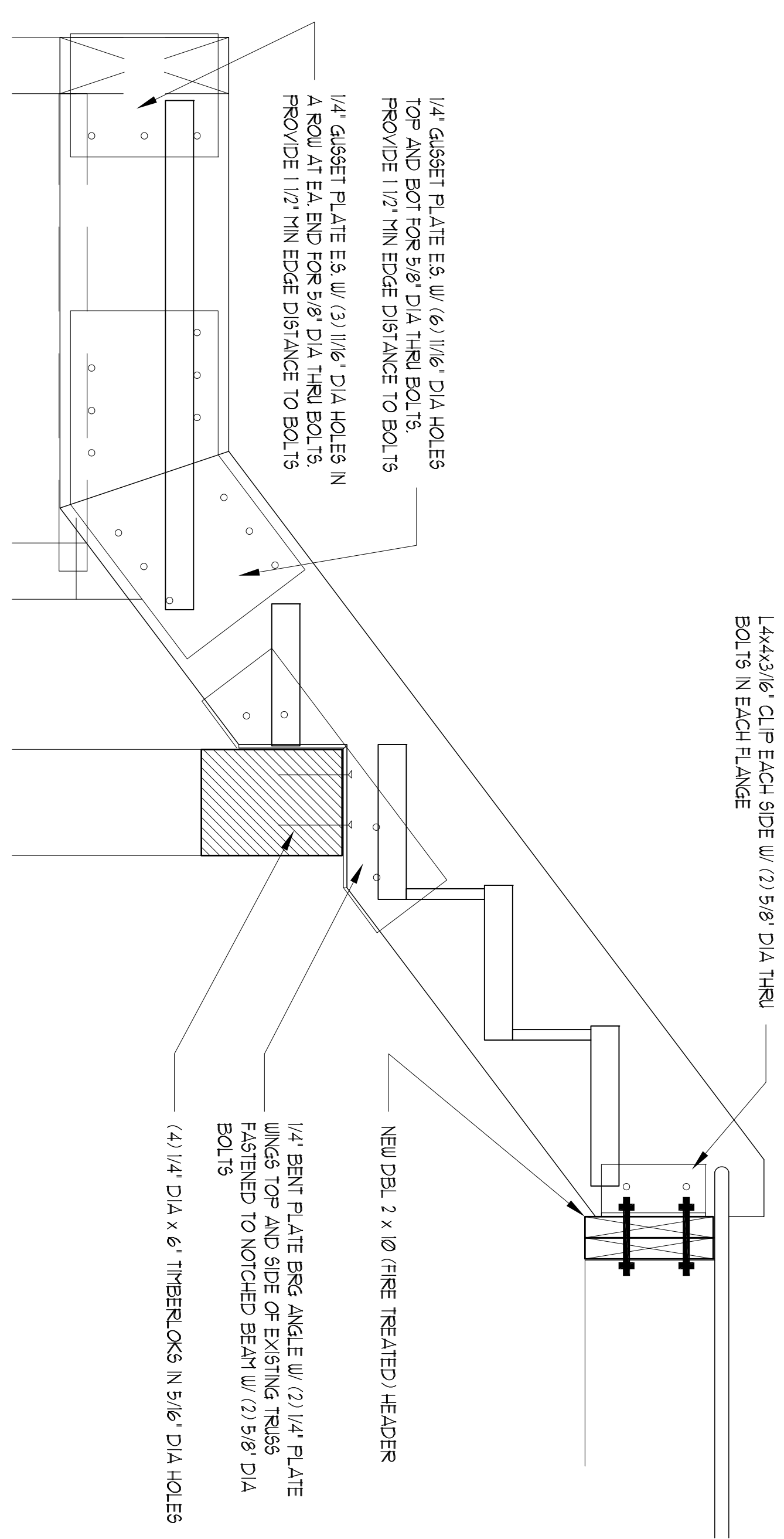


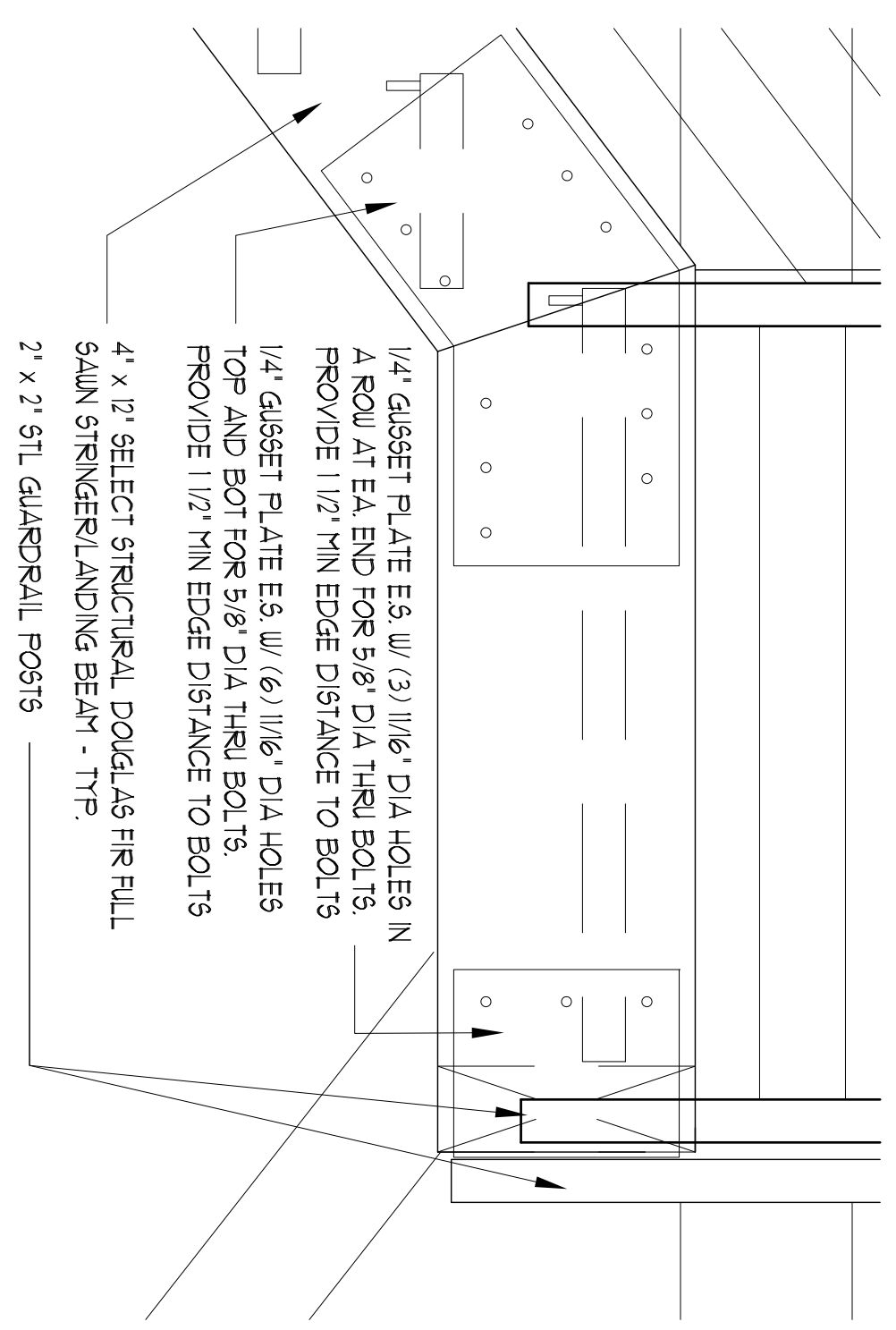
1 STAIR DETAIL

SCALE: 1" = 1'-0"



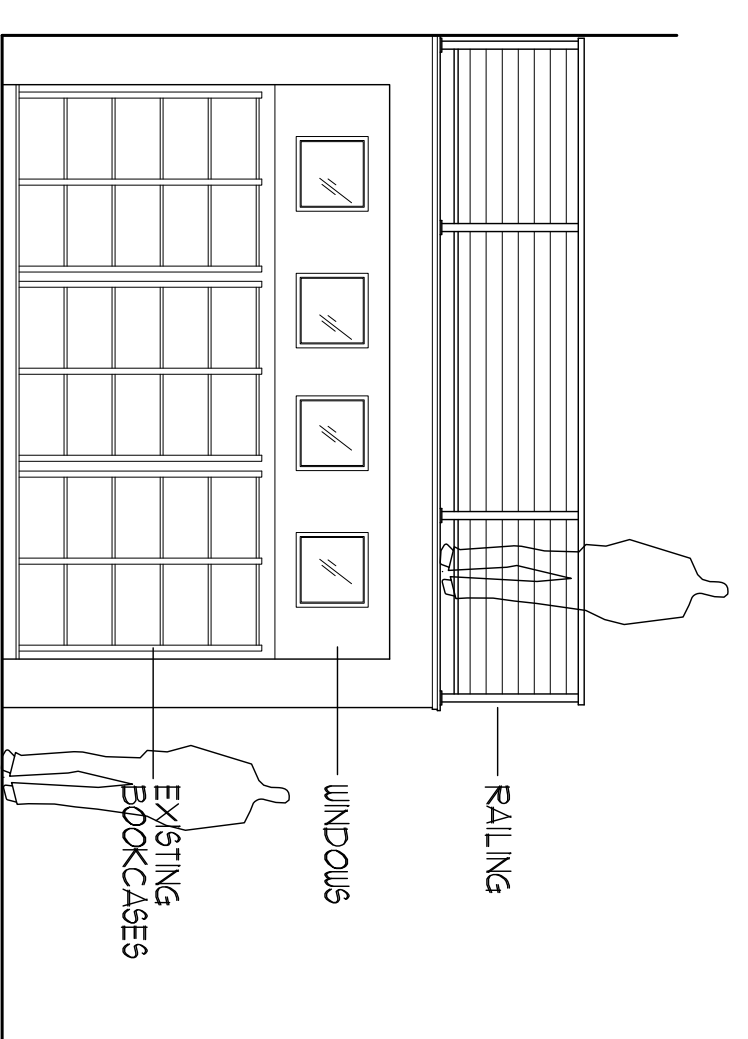
2 STAIR DETAIL

SCALE: 1 1/2" = 1'-0"



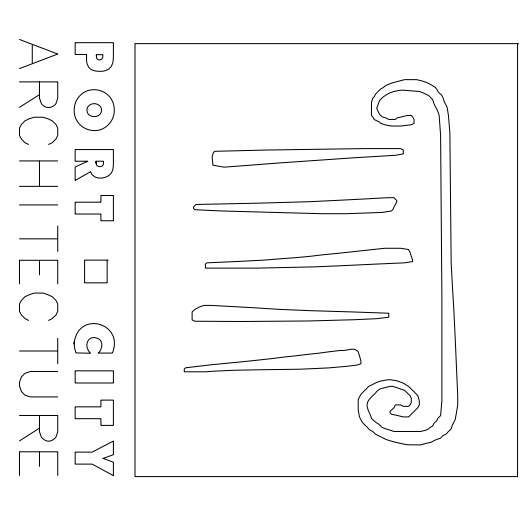
3 STAIR DETAIL

SCALE: 1 1/2" = 1'-0"



4 BEDROOM ELEVATION

SCALE: 1/4" = 1'-0"



65 NEWBURY STREET
 PORTLAND, ME 04101
 207.761.9000
 fax: 207.761.2010

CONTRACTOR
GREAT FALLS
CONSTRUCTION
 20 Mechanic Street
 Gorham, Maine
 04038
 (207) 839-2744

BUDDÉ-COLE
CONDO
 28 Monument Sq. #4
 Portland, Maine
 04101

#	DATE	DESCRIPTION
1	11-4-13	FOR CONSTRUCTION

Date Issued: 11-4-13
 Project Number: 130071
 Scale: AS NOTED
 SHEET NAME: DETAILS

Drawn By: T/C
 Checked By: ACH
A-2.1