

PROJECT
6th Floor Interior
Office Renovation

50 Monument Sq
Portland, Maine 04101
CBL: 027 F001001

CLIENT
CBRE | Boulos Property Management
1 Canal Plaza, Suite 500
Portland, ME 04101

INFORMATION

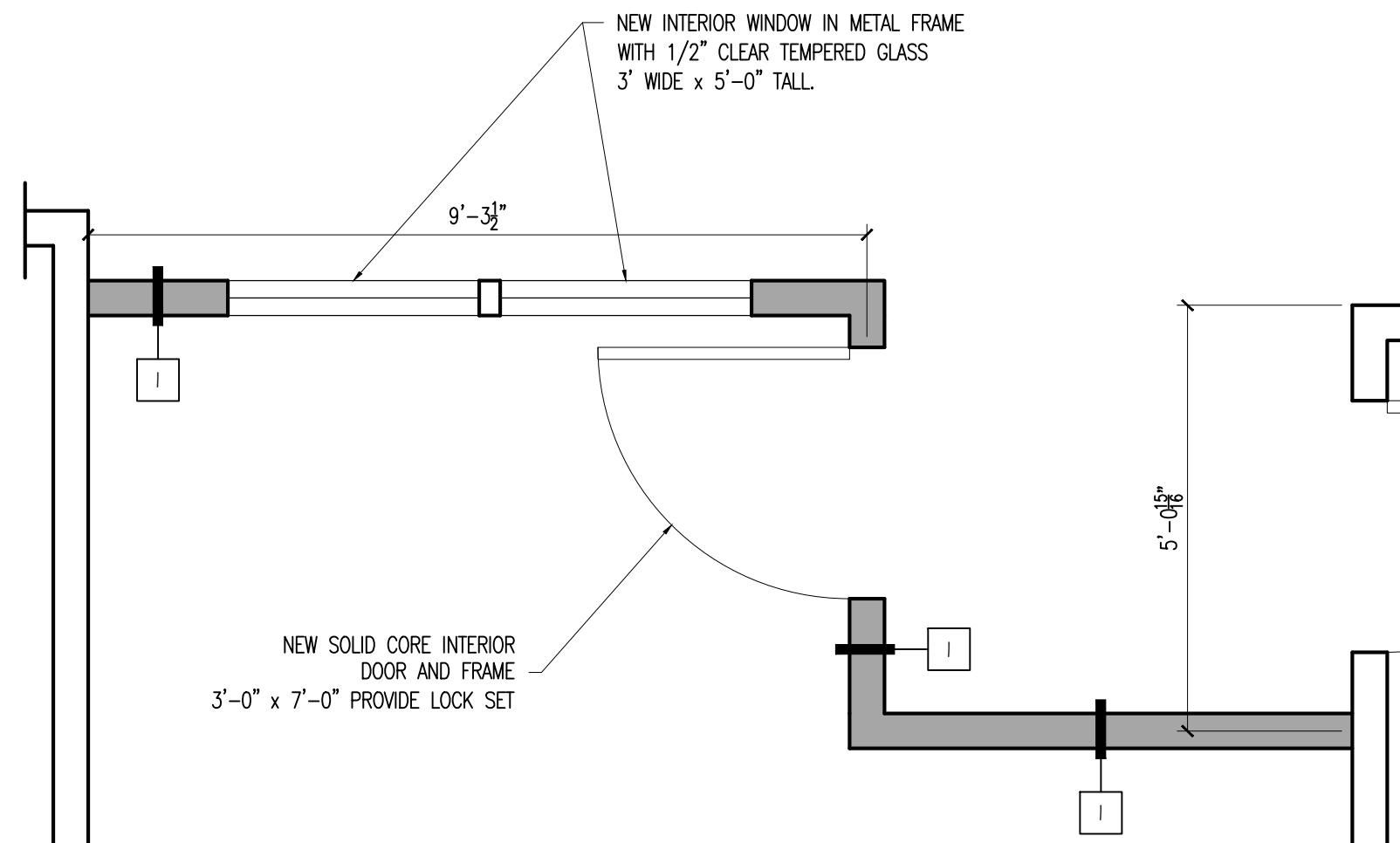
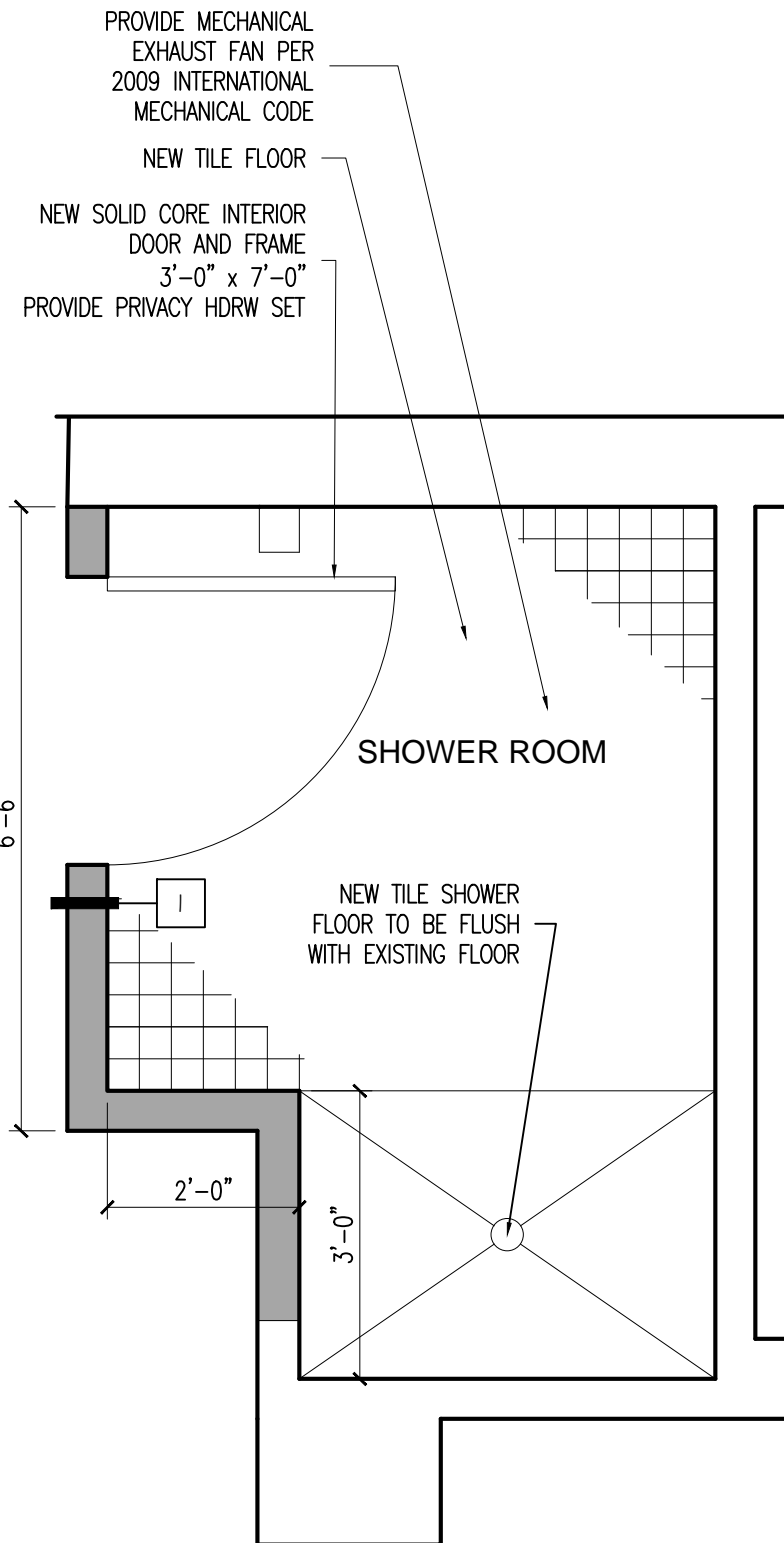
Path: m:\boulos\50MM\
Issue Date: 05.10.16
Drawn By: DG
Checked By: DG



TITLE
PARTIAL FLOOR PLANS

SCALE: 1/2"=1'-0"

©2016 Graham Architects All rights reserved. Information, material, and designs in this document are proprietary to and owned by Graham Architects and may not be disclosed to any third party, reproduced, posted on a global computer information network, or distributed in any way without the written consent from Graham Architects.



2 1/2"=1'-0" PARTIAL PLAN

1 1/2"=1'-0" PARTIAL PLAN