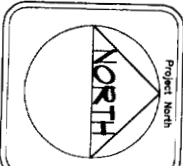


----- RELOCATE PARTITION TO BE REMOVED, COORDINATE EXTERNS WITH NEW CONSTRUCTION AND CONSTRUCTION TO REMAIN

Second Floor Removals Plan

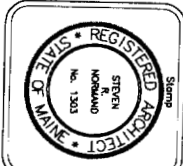
Sheet Number
R1.2

Revisions



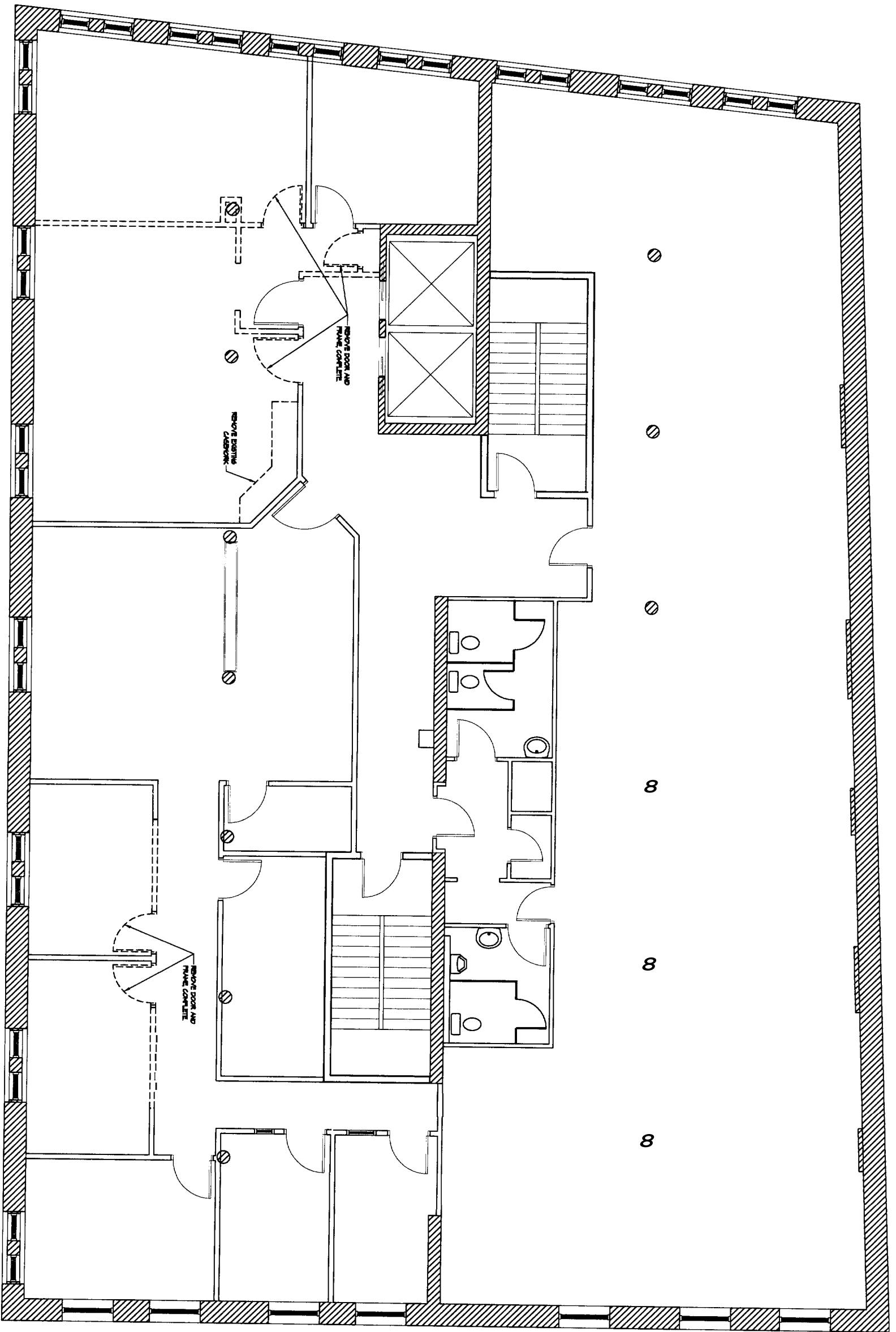
Project
Ingraham Offices
50 Monument Square
Portland, Maine

Title
Second Floor Removals Plan
Scale: 1/4" = 1'-0"
Date: August 10, 2005



Normand Associates Architects
185 Park Row, New York, NY 10038
Portland Office: Box 478, Portland, ME 04101
Phone: (207) 725-4460
Fax: (207) 725-1789
Email: info@normand.com

SN

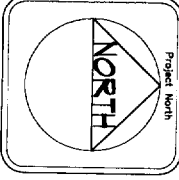


----- INDICATES PARTITION TO BE REMOVED. COMPLETE EXTERIOR WITH NEW CONSTRUCTION AND CONSTRUCTION TO REPAIR.

Third Floor Removals Plan

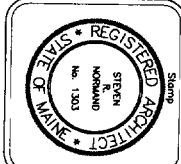
Sheet Number
R1.3

Revision



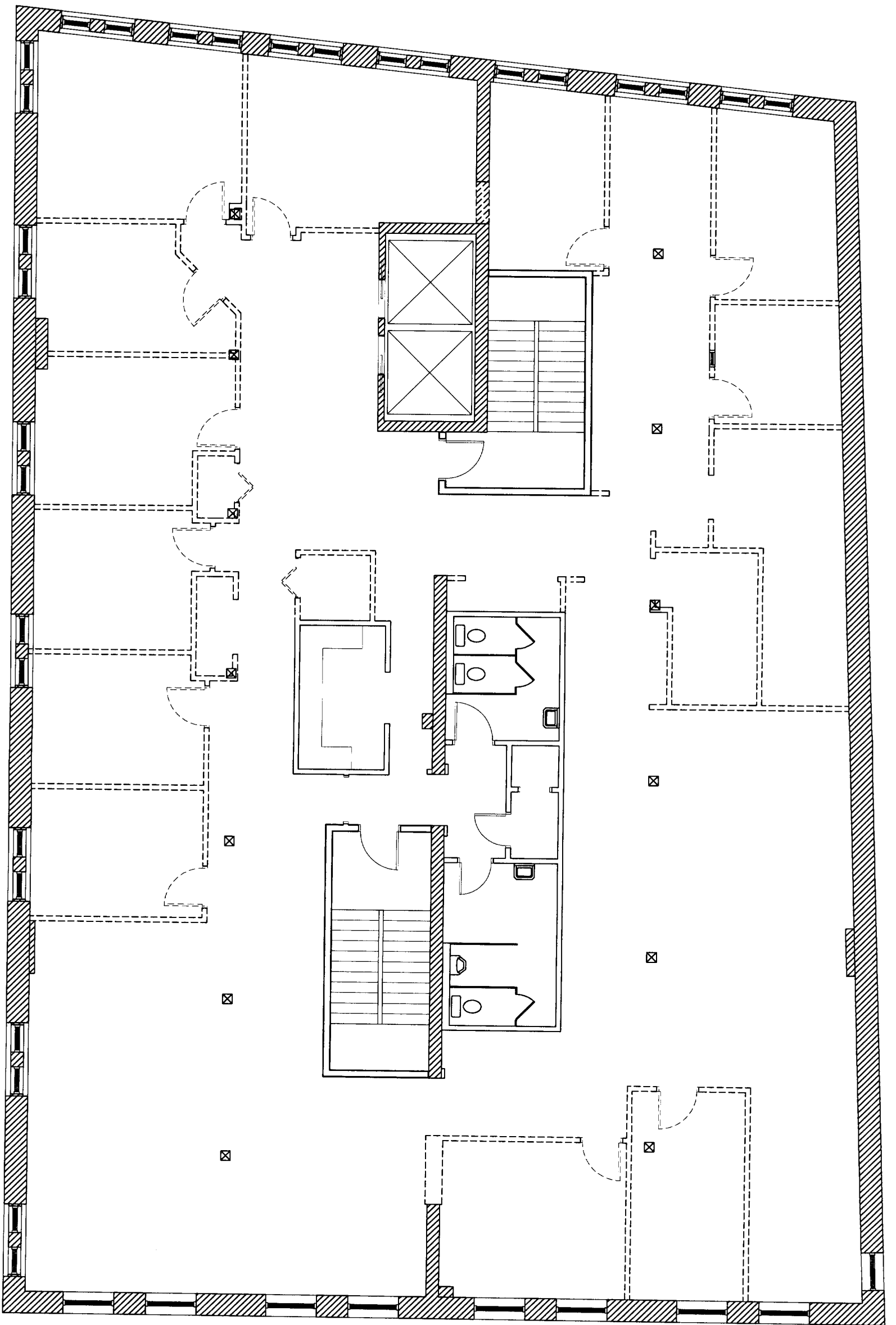
Project
Ingraham Offices
50 Monument Square
Portland, Maine

Title
Third Floor Removals Plan
Scale: 1/4" = 1'-0"
Date: August 10, 2005



145 Park Ave. 4th Fl.
Portland, Maine 04101
Tel: (207) 725-7980
Fax: (207) 725-7980
Email: sn@stephenorwood.com





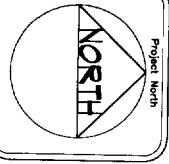
 INDICATES PARTITION TO BE REMOVED, COMPONENTS EXISTING WITH NEW CONSTRUCTION AND CONSTRUCTION TO REMAIN

GENERAL NOTES:
 1. ALL EXISTING DOORS SHOWN DASHED AT THIS LEVEL ARE TO BE REMOVED DOOR AND FRAME COMPLETE.

Fourth Floor Removals, 2

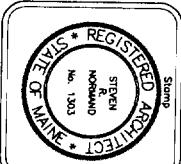
Sheet Number
R1.4

Revision



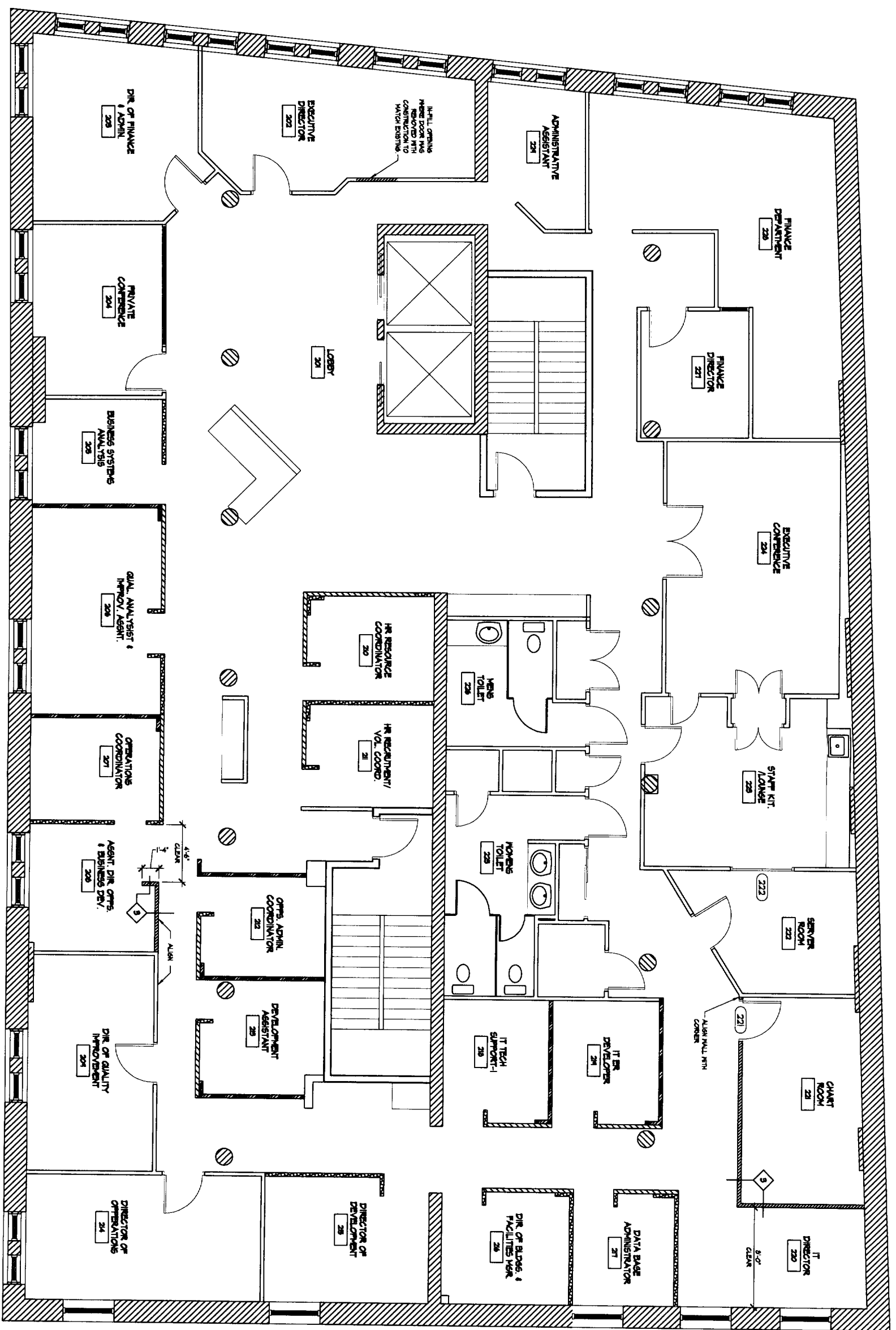
Project
**Ingraham Offices
 50 Monument Square
 Portland, Maine**

Title
**fourth Floor Removals Plan
 Scale: 1/4" = 1'-0"
 Date: August 10, 2005**



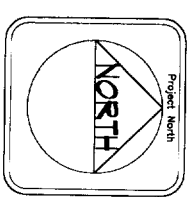
**Worland
 Associates
 Architects**
 105 Park Row North
 Portland, Maine 04101
 Phone (207) 725-4460
 Fax (207) 725-4460
 Email: info@worland.com





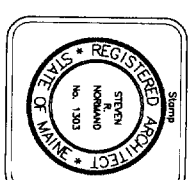
- EXISTING 66" GMB PARTITION
- EXISTING 'KALMALL' PARTITION
- EXISTING 80" GMB PARTITION
- NEW PARTITION

Second Floor Plan



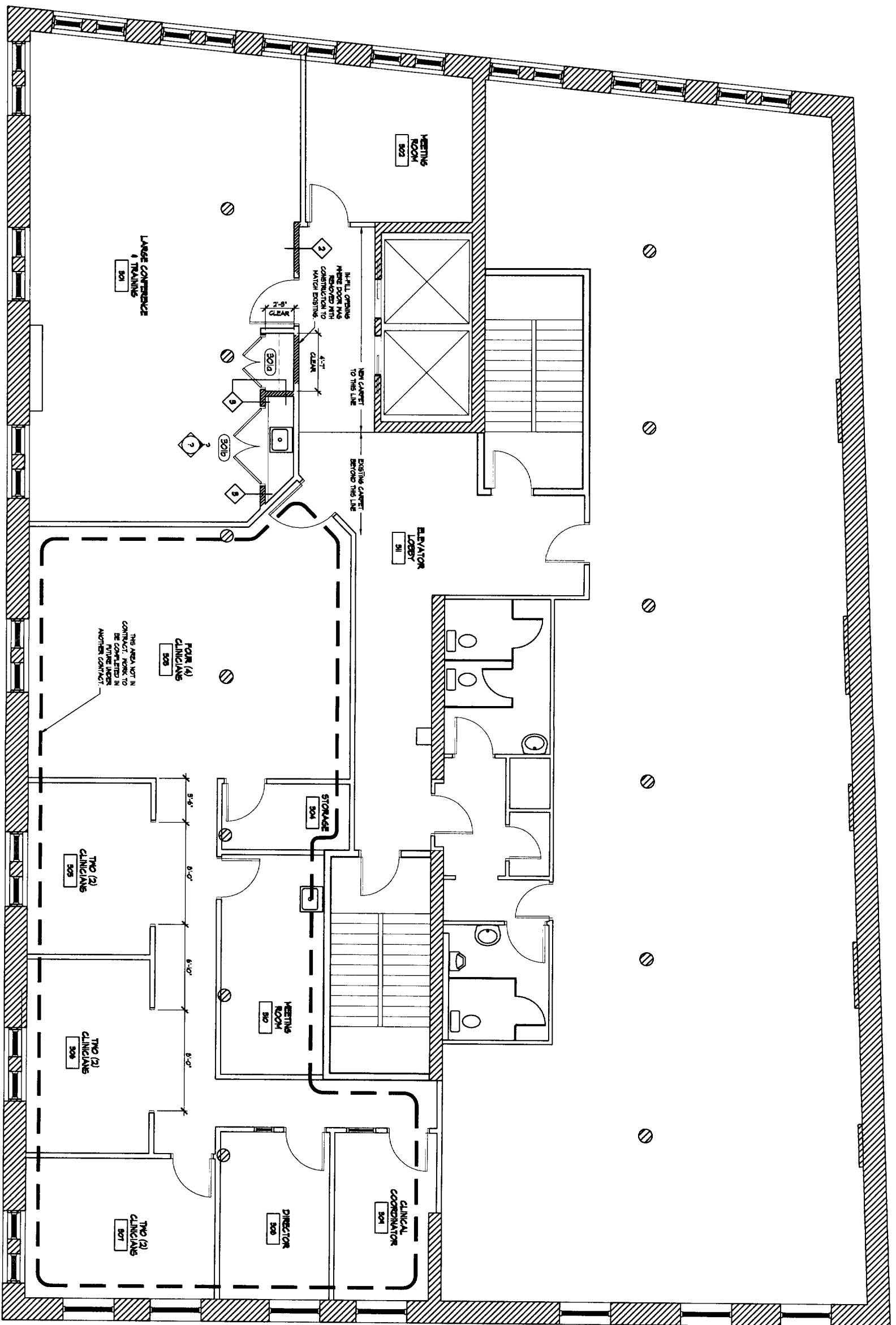
Project
Ingraham Offices
 50 Monument Square
 Portland, Maine

Title
Second Floor Plan
 Scale: 1/4" = 1'-0"
 Date: August 10, 2005



Wormand Associates Architects
 105 Park Row River
 Brunswick, Maine 04011
 Phone (207) 725-4460
 Fax (207) 725-4460
 Email info@wormand.com

Sheet Number
A1.2



 EXISTING PARTITION
 NEW PARTITION

FOUR (4)
 CLINICIANS
 306
 THIS AREA NOT IN
 CONTRACT
 TO BE COMPLETED IN
 A FUTURE PHASE
 ANOTHER CONTRACT

TWO (2)
CLINICIANS
309

TWO (2)
CLINICIANS
308

TWO (2)
CLINICIANS
307

DIRECTOR
308

CLINICAL
COORDINATOR
304

STORAGE
304

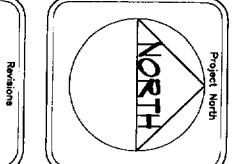
MEETING
ROOM
305

ELEVATOR
LOBBY
31

MEETING
ROOM
302

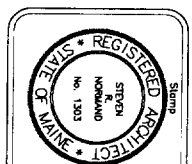
LARGE CONFERENCE
& TRAINING
301

Sheet Number
A1.3



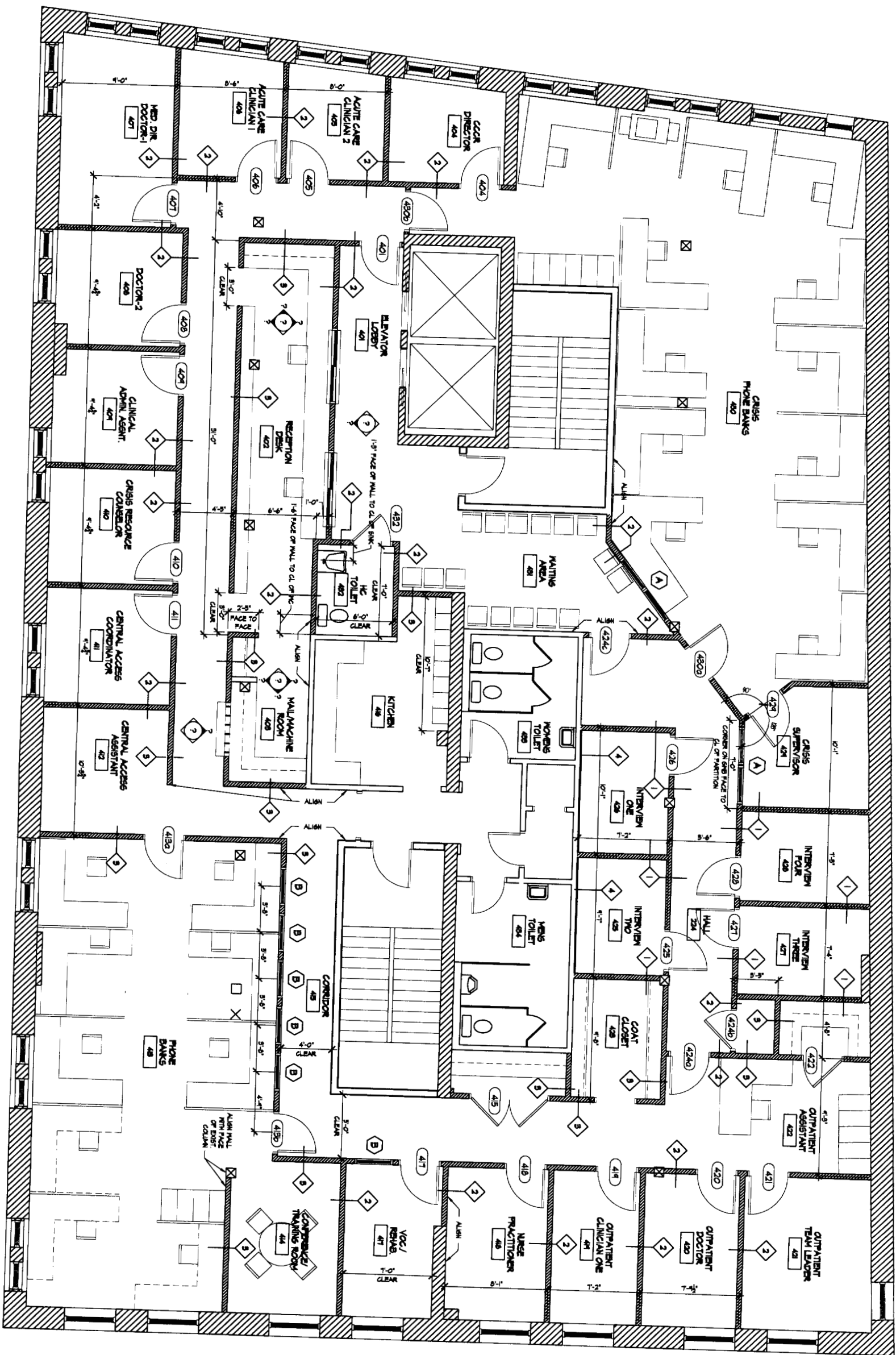
Project
Ingraham Offices
50 Monument Square
Portland, Maine

Title
Third Floor Plan
 Scale: 1/4" = 1'-0"
 Date: August 10, 2005



Normand
Associates
Architects
 185 Park Row, 8th Fl.
 Portland, Maine 04101
 Tel: (207) 725-1730
 Fax: (207) 725-1739
 Email: info@normand.com





EXISTING PARTITION

 NEW PARTITION

GENERAL NOTES:

 1. DIMENSIONS ARE TO FACE OF WOODEN FRAME OF PARTITION UNLESS NOTED OTHERWISE.

Sheet Number
A1.4

Project
**Ingraham Offices
50 Monument Square
Portland, Maine**

Title
**Fourth Floor Plan
Scale: 1/4" = 1'-0"
Date: August 10, 2005**

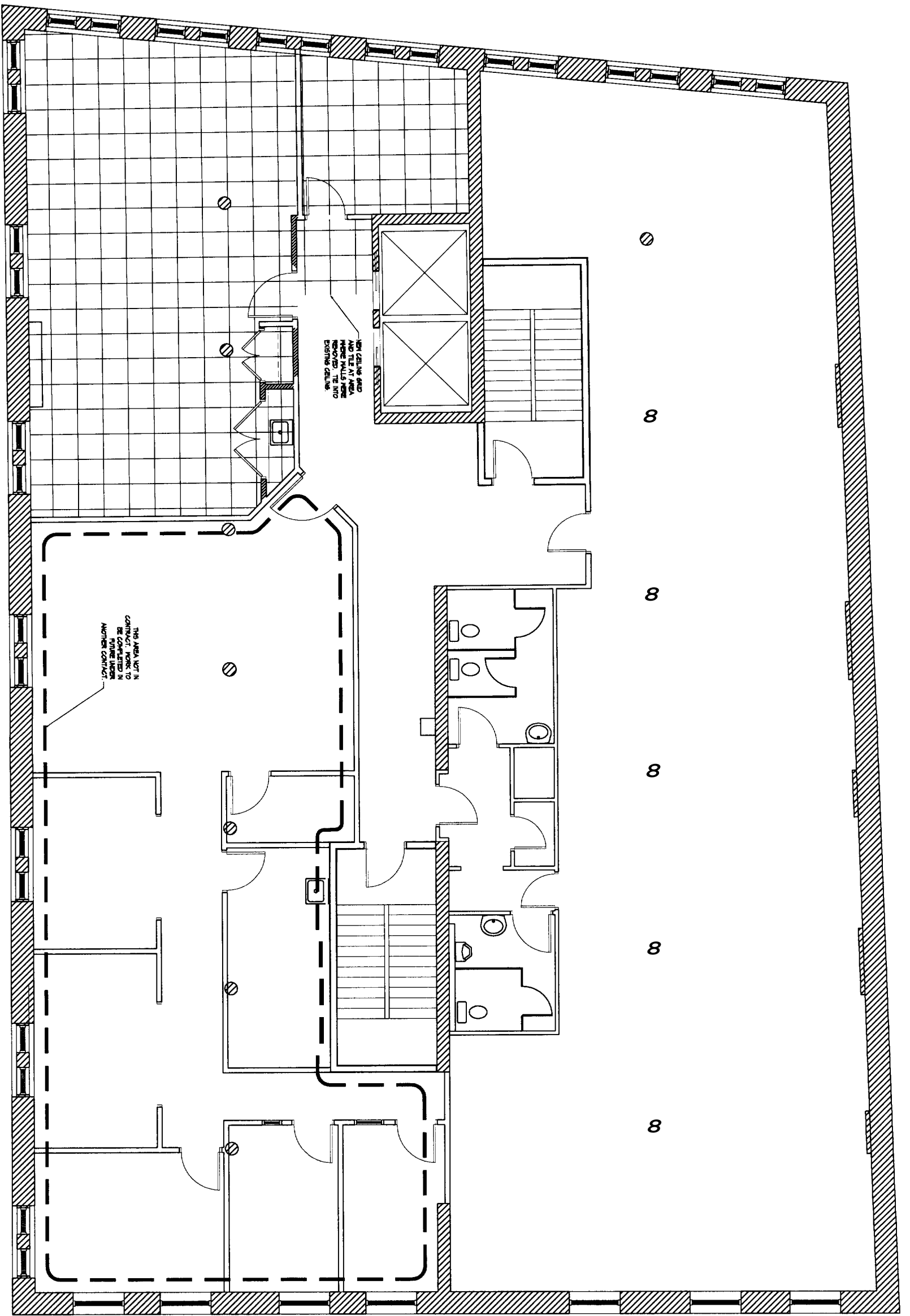
REGISTERED ARCHITECT
STATE OF MAINE
STEFAN R. WORMAND
NO. 1303

145 Park Row, New
Brunswick, NJ 07102
Tel: (908) 727-4840
Fax: (908) 727-4840
Email: stefan@wormand.com

**Wormand
Associates
Architects**

Project North
NORTH

Revisions

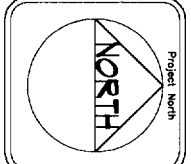


THIS AREA NOT IN CONTRACT. WORK TO BE DONE UNDER ANOTHER CONTRACT.

NEW CEILING AND POP TILES AT AREA WHERE WALLS WERE REMOVED. THE NEW EXISTING CEILING.

Sheet Number
A7.3

Revisions



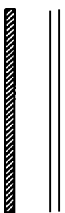
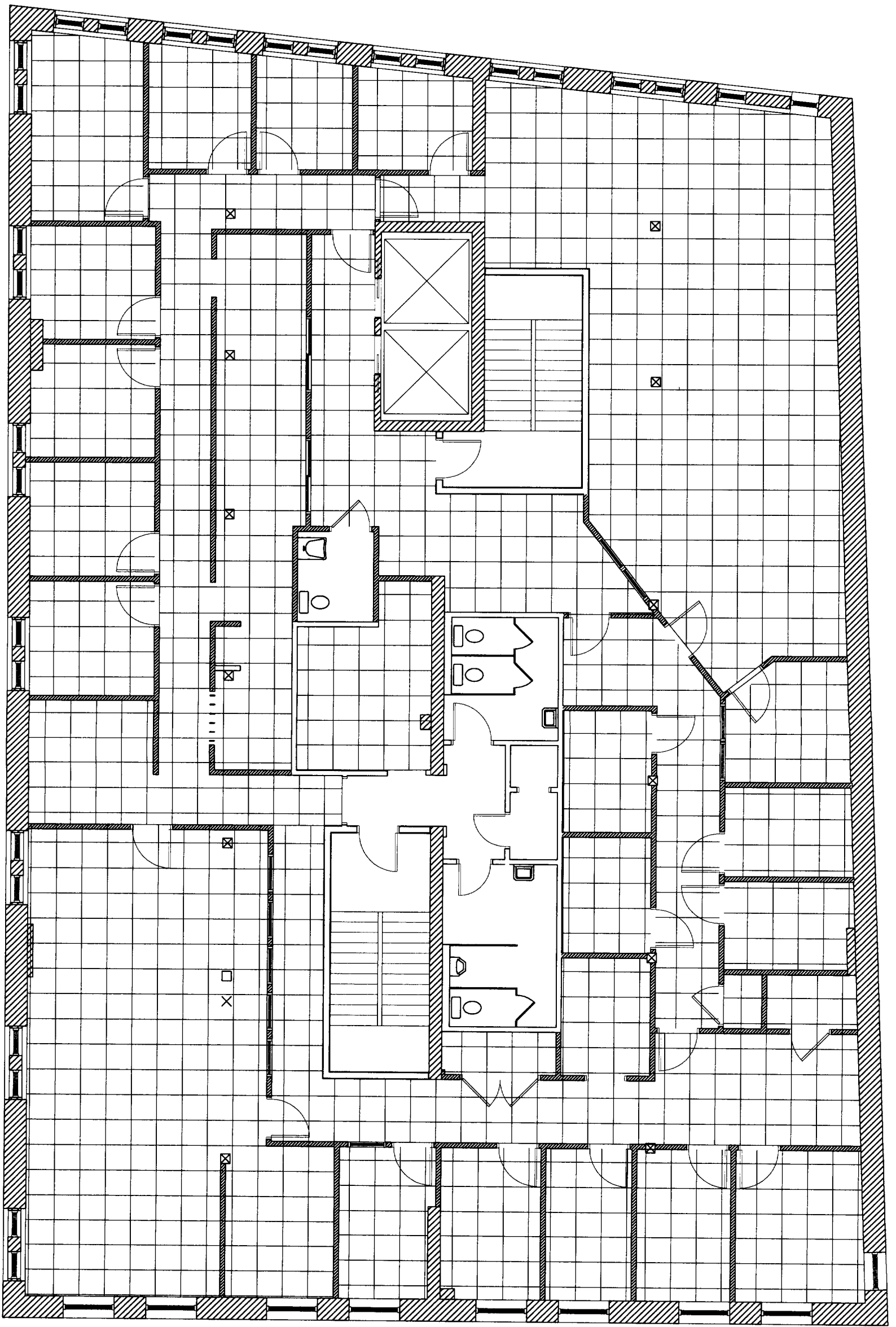
Project
**Ingraham Offices
50 Monument Square
Portland, Maine**

Title
**Third Floor
Reflected Ceiling Plan
Scale: 1/4" = 1'-0"
Date: August 10, 2005**



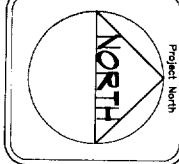
Normand
**Associates
Architects**
165 Park Row North
Portland, Maine 04101
Tel: (207) 725-1729
Fax: (207) 725-1729
Email: info@normand.com





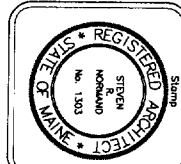
Sheet Number
A7.4

Revisions



Project
Ingraham Offices
50 Monument Square
Portland, Maine

Title
Reflected Ceiling Plan
Fourth Floor
Scale: 1/4" = 1'-0"
Date: July 8, 2005



Norman
Associates
Architects
155 Park Ave. 9th Fl.
Portland, ME 04101
Phone (207) 725-4011
Fax (207) 725-1729
Email andrew@norman.com



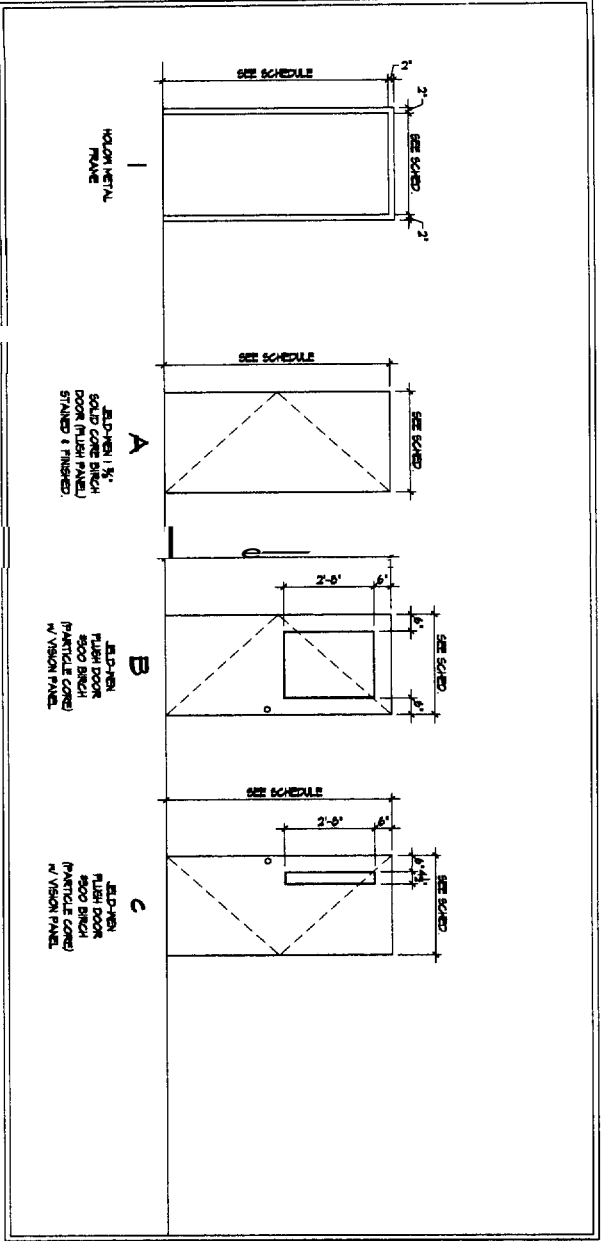
FINISH SCHEDULE

ROOM #	ROOM NAME	FLOOR	BASE	N	E	W	C.D.	C.D. H	REMARKS
201	LOBBY	-	-	FR	FR	FR	-	-	
202	BOARDING DIRECTOR	-	-	FR	FR	FR	-	-	
203	DR. OF FINANCE & ADMIN	-	-	FR	FR	FR	-	-	
204	FINANCE CONFERENCE	-	-	FR	FR	FR	-	-	
205	FINANCE CONFERENCE	-	-	FR	FR	FR	-	-	
206	FINANCE CONFERENCE	-	-	FR	FR	FR	-	-	
207	DR. OF FINANCE & ADMIN	-	-	FR	FR	FR	-	-	
208	DR. OF FINANCE & ADMIN	-	-	FR	FR	FR	-	-	
209	DR. OF FINANCE & ADMIN	-	-	FR	FR	FR	-	-	
210	DR. OF FINANCE & ADMIN	-	-	FR	FR	FR	-	-	
211	DR. OF FINANCE & ADMIN	-	-	FR	FR	FR	-	-	
212	DR. OF FINANCE & ADMIN	-	-	FR	FR	FR	-	-	
213	DR. OF FINANCE & ADMIN	-	-	FR	FR	FR	-	-	
214	DR. OF FINANCE & ADMIN	-	-	FR	FR	FR	-	-	
215	DR. OF FINANCE & ADMIN	-	-	FR	FR	FR	-	-	
216	DR. OF FINANCE & ADMIN	-	-	FR	FR	FR	-	-	
217	DR. OF FINANCE & ADMIN	-	-	FR	FR	FR	-	-	
218	DR. OF FINANCE & ADMIN	-	-	FR	FR	FR	-	-	
219	DR. OF FINANCE & ADMIN	-	-	FR	FR	FR	-	-	
220	DR. OF FINANCE & ADMIN	-	-	FR	FR	FR	-	-	
221	DR. OF FINANCE & ADMIN	-	-	FR	FR	FR	-	-	
222	DR. OF FINANCE & ADMIN	-	-	FR	FR	FR	-	-	
223	DR. OF FINANCE & ADMIN	-	-	FR	FR	FR	-	-	
224	DR. OF FINANCE & ADMIN	-	-	FR	FR	FR	-	-	
225	DR. OF FINANCE & ADMIN	-	-	FR	FR	FR	-	-	
226	DR. OF FINANCE & ADMIN	-	-	FR	FR	FR	-	-	
227	DR. OF FINANCE & ADMIN	-	-	FR	FR	FR	-	-	
228	DR. OF FINANCE & ADMIN	-	-	FR	FR	FR	-	-	
229	DR. OF FINANCE & ADMIN	-	-	FR	FR	FR	-	-	
301	CONFERENCE & TRAINING	-	-	FR	FR	FR	-	-	
302	CONFERENCE & TRAINING	-	-	FR	FR	FR	-	-	
303	CONFERENCE & TRAINING	-	-	FR	FR	FR	-	-	
304	CONFERENCE & TRAINING	-	-	FR	FR	FR	-	-	
305	CONFERENCE & TRAINING	-	-	FR	FR	FR	-	-	
306	CONFERENCE & TRAINING	-	-	FR	FR	FR	-	-	
307	CONFERENCE & TRAINING	-	-	FR	FR	FR	-	-	
308	CONFERENCE & TRAINING	-	-	FR	FR	FR	-	-	
309	CONFERENCE & TRAINING	-	-	FR	FR	FR	-	-	
310	CONFERENCE & TRAINING	-	-	FR	FR	FR	-	-	
311	CONFERENCE & TRAINING	-	-	FR	FR	FR	-	-	
401	RECEPTION	-	-	FR	FR	FR	-	-	
402	RECEPTION	-	-	FR	FR	FR	-	-	
403	RECEPTION	-	-	FR	FR	FR	-	-	
404	RECEPTION	-	-	FR	FR	FR	-	-	
405	RECEPTION	-	-	FR	FR	FR	-	-	
406	RECEPTION	-	-	FR	FR	FR	-	-	
407	RECEPTION	-	-	FR	FR	FR	-	-	
408	RECEPTION	-	-	FR	FR	FR	-	-	
409	RECEPTION	-	-	FR	FR	FR	-	-	
410	RECEPTION	-	-	FR	FR	FR	-	-	
411	RECEPTION	-	-	FR	FR	FR	-	-	
412	RECEPTION	-	-	FR	FR	FR	-	-	
413	RECEPTION	-	-	FR	FR	FR	-	-	
414	RECEPTION	-	-	FR	FR	FR	-	-	
415	RECEPTION	-	-	FR	FR	FR	-	-	
416	RECEPTION	-	-	FR	FR	FR	-	-	
417	RECEPTION	-	-	FR	FR	FR	-	-	
418	RECEPTION	-	-	FR	FR	FR	-	-	
419	RECEPTION	-	-	FR	FR	FR	-	-	
420	RECEPTION	-	-	FR	FR	FR	-	-	
421	RECEPTION	-	-	FR	FR	FR	-	-	
422	RECEPTION	-	-	FR	FR	FR	-	-	
423	RECEPTION	-	-	FR	FR	FR	-	-	
424	RECEPTION	-	-	FR	FR	FR	-	-	
425	RECEPTION	-	-	FR	FR	FR	-	-	
426	RECEPTION	-	-	FR	FR	FR	-	-	
427	RECEPTION	-	-	FR	FR	FR	-	-	
428	RECEPTION	-	-	FR	FR	FR	-	-	
429	RECEPTION	-	-	FR	FR	FR	-	-	
430	RECEPTION	-	-	FR	FR	FR	-	-	
431	RECEPTION	-	-	FR	FR	FR	-	-	
432	RECEPTION	-	-	FR	FR	FR	-	-	
433	RECEPTION	-	-	FR	FR	FR	-	-	
434	RECEPTION	-	-	FR	FR	FR	-	-	
435	RECEPTION	-	-	FR	FR	FR	-	-	
436	RECEPTION	-	-	FR	FR	FR	-	-	
437	RECEPTION	-	-	FR	FR	FR	-	-	
438	RECEPTION	-	-	FR	FR	FR	-	-	
439	RECEPTION	-	-	FR	FR	FR	-	-	
440	RECEPTION	-	-	FR	FR	FR	-	-	
441	RECEPTION	-	-	FR	FR	FR	-	-	
442	RECEPTION	-	-	FR	FR	FR	-	-	
443	RECEPTION	-	-	FR	FR	FR	-	-	
444	RECEPTION	-	-	FR	FR	FR	-	-	
445	RECEPTION	-	-	FR	FR	FR	-	-	
446	RECEPTION	-	-	FR	FR	FR	-	-	
447	RECEPTION	-	-	FR	FR	FR	-	-	
448	RECEPTION	-	-	FR	FR	FR	-	-	
449	RECEPTION	-	-	FR	FR	FR	-	-	
450	RECEPTION	-	-	FR	FR	FR	-	-	
451	RECEPTION	-	-	FR	FR	FR	-	-	
452	RECEPTION	-	-	FR	FR	FR	-	-	
453	RECEPTION	-	-	FR	FR	FR	-	-	
454	RECEPTION	-	-	FR	FR	FR	-	-	

ROOM #	AREA	SIZE	TK	TYPE	FR	FN	TYPE	W.C.	FR	REMARKS
221	DOOR	9'-0" x 7'-0"	13/8"	HM	FR	B	WD	-	-	ADD NEW DOOR BOLT TO EXISTING DOOR
301a	DOOR	9'-0" x 7'-0"	13/8"	HM	FR	A	WD	-	-	
301b	DOOR	9'-0" x 7'-0"	13/8"	HM	FR	A	WD	-	-	
401	DOOR	9'-0" x 7'-0"	13/8"	HM	FR	C	WD	-	-	
404	DOOR	9'-0" x 7'-0"	13/8"	HM	FR	C	WD	-	-	
405	DOOR	9'-0" x 7'-0"	13/8"	HM	FR	C	WD	-	-	
406	DOOR	9'-0" x 7'-0"	13/8"	HM	FR	C	WD	-	-	
407	DOOR	9'-0" x 7'-0"	13/8"	HM	FR	C	WD	-	-	
408	DOOR	9'-0" x 7'-0"	13/8"	HM	FR	C	WD	-	-	
409	DOOR	9'-0" x 7'-0"	13/8"	HM	FR	C	WD	-	-	
410	DOOR	9'-0" x 7'-0"	13/8"	HM	FR	C	WD	-	-	
411	DOOR	9'-0" x 7'-0"	13/8"	HM	FR	C	WD	-	-	
415	DOOR	9'-0" x 7'-0"	13/8"	HM	FR	C	WD	-	-	
416	DOOR	9'-0" x 7'-0"	13/8"	HM	FR	C	WD	-	-	
417	DOOR	9'-0" x 7'-0"	13/8"	HM	FR	C	WD	-	-	
418	DOOR	9'-0" x 7'-0"	13/8"	HM	FR	C	WD	-	-	
419	DOOR	9'-0" x 7'-0"	13/8"	HM	FR	C	WD	-	-	
420	DOOR	9'-0" x 7'-0"	13/8"	HM	FR	C	WD	-	-	
421	DOOR	9'-0" x 7'-0"	13/8"	HM	FR	C	WD	-	-	
422	DOOR	9'-0" x 7'-0"	13/8"	HM	FR	A	WD	-	-	
423	DOOR	9'-0" x 7'-0"	13/8"	HM	FR	C	WD	-	-	
424	DOOR	9'-0" x 7'-0"	13/8"	HM	FR	C	WD	-	-	
425	DOOR	9'-0" x 7'-0"	13/8"	HM	FR	C	WD	-	-	
426	DOOR	9'-0" x 7'-0"	13/8"	HM	FR	C	WD	-	-	
427	DOOR	9'-0" x 7'-0"	13/8"	HM	FR	C	WD	-	-	
428	DOOR	9'-0" x 7'-0"	13/8"	HM	FR	C	WD	-	-	
429	DOOR	9'-0" x 7'-0"	13/8"	HM	FR	C	WD	-	-	
430	DOOR	9'-0" x 7'-0"	13/8"	HM	FR	C	WD	-	-	
431	DOOR	9'-0" x 7'-0"	13/8"	HM	FR	C	WD	-	-	
432	DOOR	9'-0" x 7'-0"	13/8"	HM	FR	C	WD	-	-	
433	DOOR	9'-0" x 7'-0"	13/8"	HM	FR	C	WD	-	-	
434	DOOR	9'-0" x 7'-0"	13/8"	HM	FR	C	WD	-	-	
435	DOOR	9'-0" x 7'-0"	13/8"	HM	FR	C	WD	-	-	
436	DOOR	9'-0" x 7'-0"	13/8"	HM	FR	C	WD	-	-	
437	DOOR	9'-0" x 7'-0"	13/8"	HM	FR	C	WD	-	-	
438	DOOR	9'-0" x 7'-0"	13/8"	HM	FR	C	WD	-	-	
439	DOOR	9'-0" x 7'-0"	13/8"	HM	FR	C	WD	-	-	
440	DOOR	9'-0" x 7'-0"	13/8"	HM	FR	C	WD	-	-	
441	DOOR	9'-0" x 7'-0"	13/8"	HM	FR	C	WD	-	-	
442	DOOR	9'-0" x 7'-0"	13/8"	HM	FR	C	WD	-	-	
443	DOOR	9'-0" x 7'-0"	13/8"	HM	FR	C	WD	-	-	
444	DOOR	9'-0" x 7'-0"	13/8"	HM	FR	C	WD	-	-	
445	DOOR	9'-0" x 7'-0"	13/8"	HM	FR	C	WD	-	-	
446	DOOR	9'-0" x 7'-0"	13/8"	HM	FR	C	WD	-	-	
447	DOOR	9'-0" x 7'-0"	13/8"	HM	FR	C	WD	-	-	
448	DOOR	9'-0" x 7'-0"	13/8"	HM	FR	C	WD	-	-	
449	DOOR	9'-0" x 7'-0"	13/8"	HM	FR	C	WD	-	-	
450	DOOR	9'-0" x 7'-0"	13/8"	HM	FR	C	WD	-	-	
451	DOOR	9'-0" x 7'-0"	13/8"	HM	FR	C	WD	-	-	
452	DOOR	9'-0" x 7'-0"	13/8"	HM	FR	C	WD	-	-	

* NOTE - ALL DOOR HARDWARE (HANDLES/DOORS) & FINISHES TO MATCH EXISTING ALUMINUM FINISH.

L-100X PV-FINACO, F-1655542

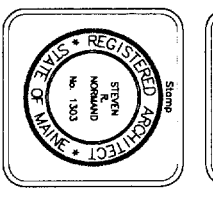


Door and Framing

SCALE: 1/4" = 1'-0"

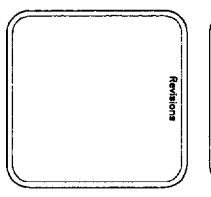
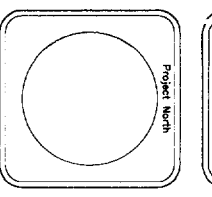


Norman Associates Architects
 165 Park Row Road
 Portland, Maine 04111
 Phone: (207) 725-4460
 Fax: (207) 725-4460
 Email: info@normanassociates.com



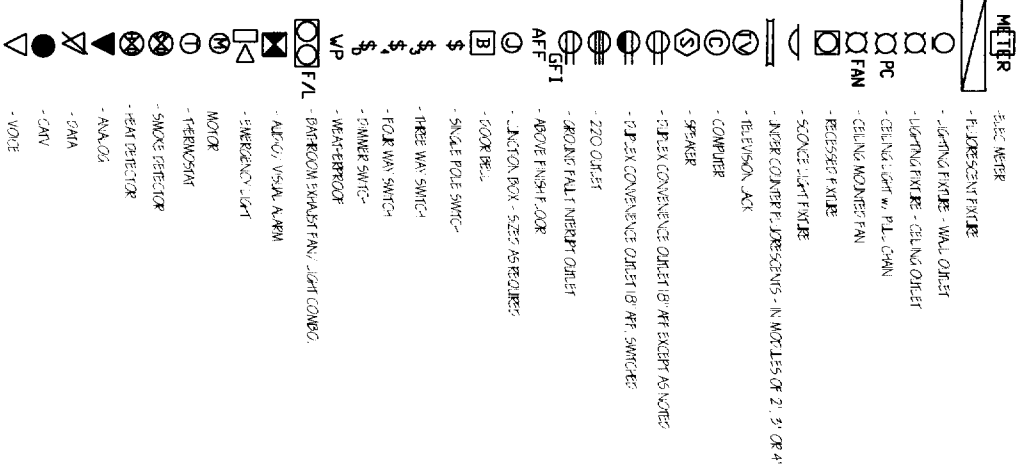
The **Door and Frame Types**
Door and Finish Schedules
 Scale: as noted
 Date: August 10, 2005

Project: **New Offices for Ingraham Inc.**
 50 Monument Square
 Portland, Maine



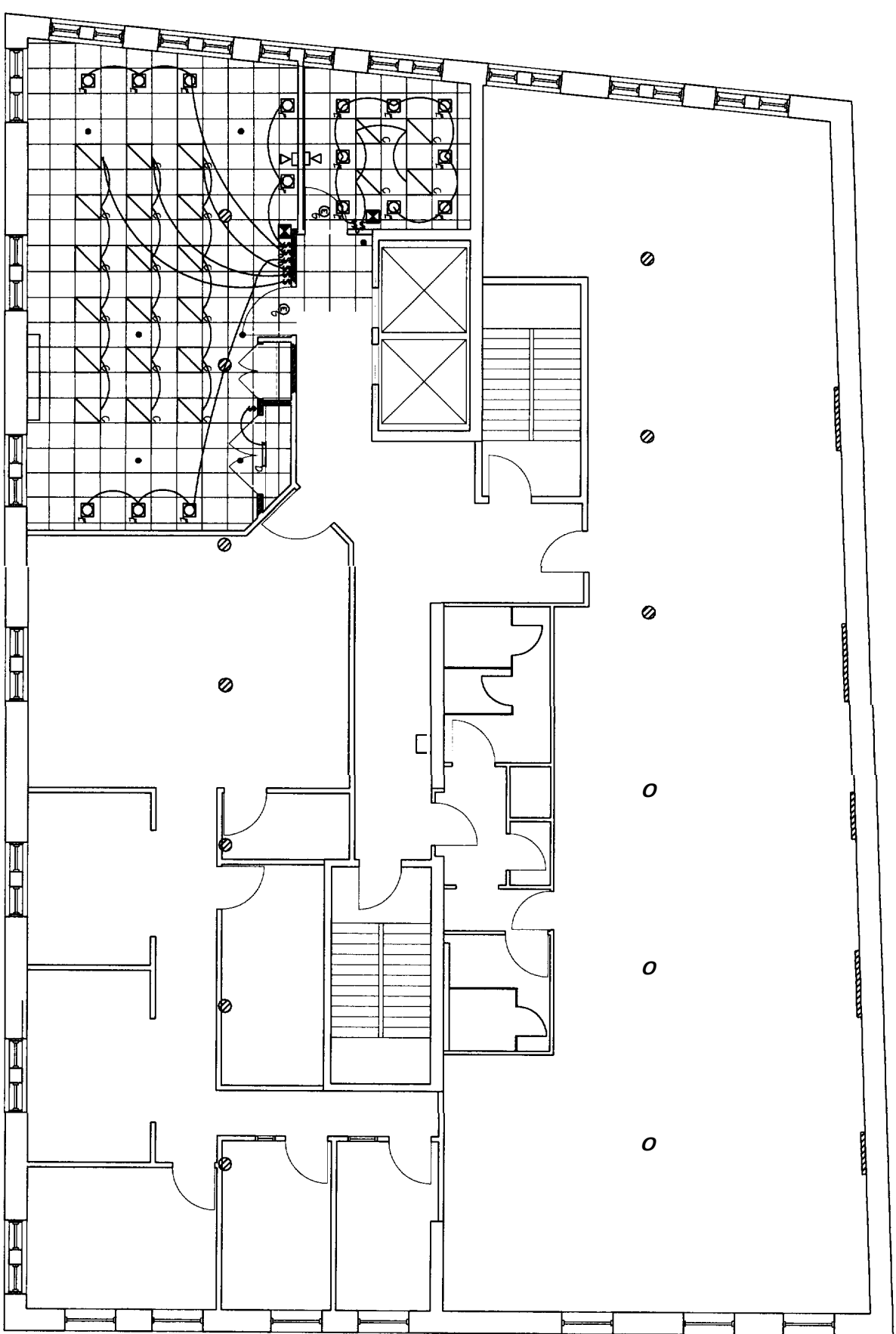
Sheet Number: **A8.1**

ELECTRICAL LEGEND



GENERAL ELECTRICAL NOTES

1. ALL WORK SHALL CONFORM TO THE LATEST EDITION OF LOCAL STATE CODES, THE N.E.C. AND NFPA 70.
2. THIS CONTRACTOR SHALL BE RESPONSIBLE FOR BALANCING THE LOAD IN THE PANEL.
3. SWITCHES SHALL BE MOUNTED 4'-0" TO TOP OF PLATE SWITCHES SHOWN IN SAME AREA SHALL BE GANGED UNDER A COMMON PLATE. LOCATE SWITCHES AS CLOSE AS POSSIBLE TO EDGE OF DOOR FRAME ON LOOK SIDE.
4. MINIMUM WIRE SIZE SHALL BE #12 AWG COPPER ALL REFERENCE TO WIRE SIZE 5' MINUS AS COPPER CIRCUIT BREAKER SIZE (AS PER PANEL SCHEDULE) SHALL DETERMINE WIRE SIZE OF ALL CONDUCTORS.
5. THE ENTIRE ELECTRICAL SYSTEM SHALL BE GROUNDED BY MEANS OF A SEPARATE GROUND CONDUCTOR. CONDUIT SHALL NOT BE CONSIDERED A GROUND CONDUCTOR BUT SHALL BE GROUNDED (SEE TABLE 250-95 N.E.C.)
6. THIS CONTRACTOR SHALL COORDINATE WITH OTHER TRADES WHERE EQUIPMENT AND/OR DEVICES ARE PROVIDED BY OTHER TRADES AND WIELD WHO,LY OR IN PART BY THIS CONTRACTOR SO AS TO ACHIEVE A COMPLETE AND OPERATING SYSTEM.
7. ALL HOMERUNS TO PANELS, IN EXCESS OF 100 FEET SHALL BE AT LEAST #10 AWG COPPER.
8. OUTLETS, JUNCTION BOXES OR PROBE HOSES MOUNTED BACK TO BACK SHALL BE PROHIBITED.
9. THIS CONTRACTOR SHALL VERIFY MOUNTING HEIGHTS FOR ALL OUTLETS, COORDINATE RECEPTACLES CAREFULLY PRIOR TO INSTALLATION, MOUNT RECEPTACLES AND OTHER OUTLETS TO CLEAR HEATING UNITS AND COMPATIBLE WITH ADA.
10. ALL HIGH SCHEMATICS SHOWN ARE DIMENSIONAL ONLY REFER TO EQUIPMENT AND CONCORD. MANUFACTURER'S SHOP DRAWINGS FOR EXACT WIRING.
11. THIS CONTRACTOR SHALL MAINTAIN THE INTEGRITY OF FIRE RATED WALLS BY SEALING ALL WIRING CONDUIT ETC. WHICH PASSES THROUGH SLASH WALLS WITH AN APPROVED FIRE RATED SEALANT.
12. DRAWINGS DO NOT NECESSARILY SHOW ALL ITEMS INCLUDED IN THE SYSTEM REFER TO FLOOR PLANS ETC FOR COMPLETE SYSTEM.
13. LOCATION OF ALL LIGHTING FIXTURES, RECEPTACLES, TELEPHONE OUTLETS, ETC SHALL BE CONFIRMED AND VERIFIED FROM ARCHITECTURAL DRAWINGS, ELEVATIONS, SECTIONS, REFLECTED CEILING, ETC.
14. THE LIGHTING FIXTURE SCHEDULE SHALL NOT BE THE SOLE LIGHTING REFERENCE REFER TO THE DRAWINGS TO VERIFY QUANTITIES, BALAST CONFIGURATIONS AND DIMENSIONS OF FIXTURES PRIOR TO ORDERING.
15. PRIOR TO INSTALLING NEW WIRING DEVICES, COORDINATE WITH THE ARCHITECT A.C. ON DEVICE LOCATIONS TO BE RELOCATED 6 FEET IN ANY DIRECTION.
16. ALL CIRCUITS SHALL BE CLEARLY LABELED AND IDENTIFIED IN ELECTRICAL PANELS.
17. EXISTING ELECTRICAL PANELS ARE LOCATED IN GENERAL ELECTRICAL CLOSET EACH FLOOR. THIS SHALL BE THE ELECTRICAL CONTRACTOR'S RESPONSIBILITY TO DETERMINE LOCATION/COMPANY/CONDITION PRIOR TO BID.



Third Floor Lighting Plan

LIGHTING FIXTURE SCHEDULE

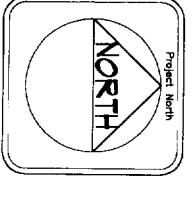
TYPE	MANUFACTURER	CATALOG NO.	LAMPS	MOUNTING & DESCRIPTION
A	Generic	NOT USED	40 T12 40W	24' TR. RECESS. PARAL. C.
B	Generic	P-224-552E-9-28-5-12-20	40 T12 40W	9' CEIL. RECESS. PARAL. C.
C	Generic	P222-240T	40 T12 40W	9' CEIL. RECESS. PARAL. C.
D	Generic	ICJ 20 W 20 RC	20 W 15 T12	9' CEIL. RECESS. PARAL. C.
E	Generic	BO-1WV-CO-WH-014	16 WATT T12 15 T12	CEILING COMPACT RECESSING OPEN DOWN LIGHT
F	Generic	5725-112W	2W recess	Emergency Escape Light Mt 7'-0" AFF
G	Generic	48023A-S44	15 Watt Fluorescent	Mt 7'-6" AFF, ceiling mount, fire hazard
H	Generic	3-403 WHU	2-1/2 W 12	Mt Above Mirror



Norman Associates Architects
 155 Park Row Street
 Portland, Maine 04101
 Phone (207) 725-4460
 Fax (207) 725-1759
 Email: info@normanmaine.com

Third Floor Lighting Plan
 Scale: 3/16" = 1'-0"
 Date: July, 2005

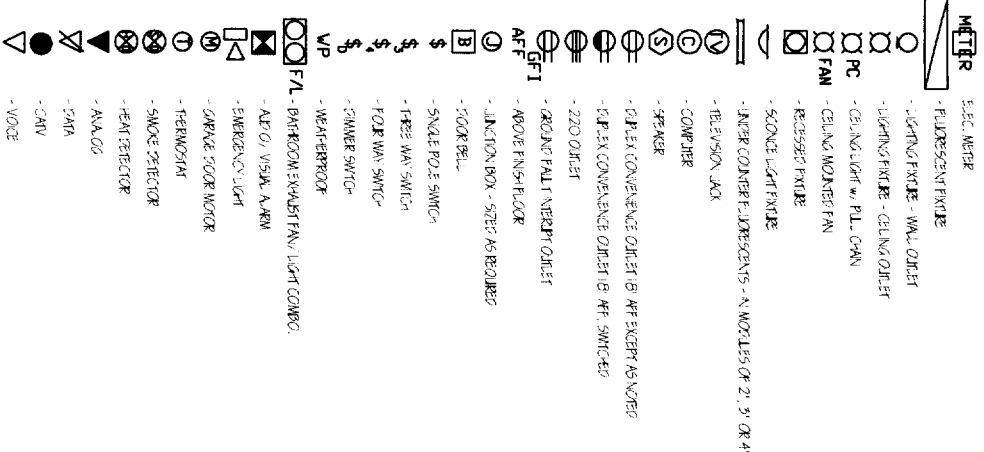
Ingraham Offices
 Basement storage area
 50 Monument Square
 Portland, Maine



Revision

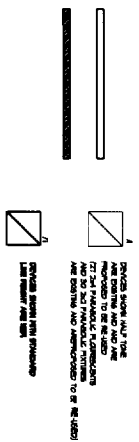
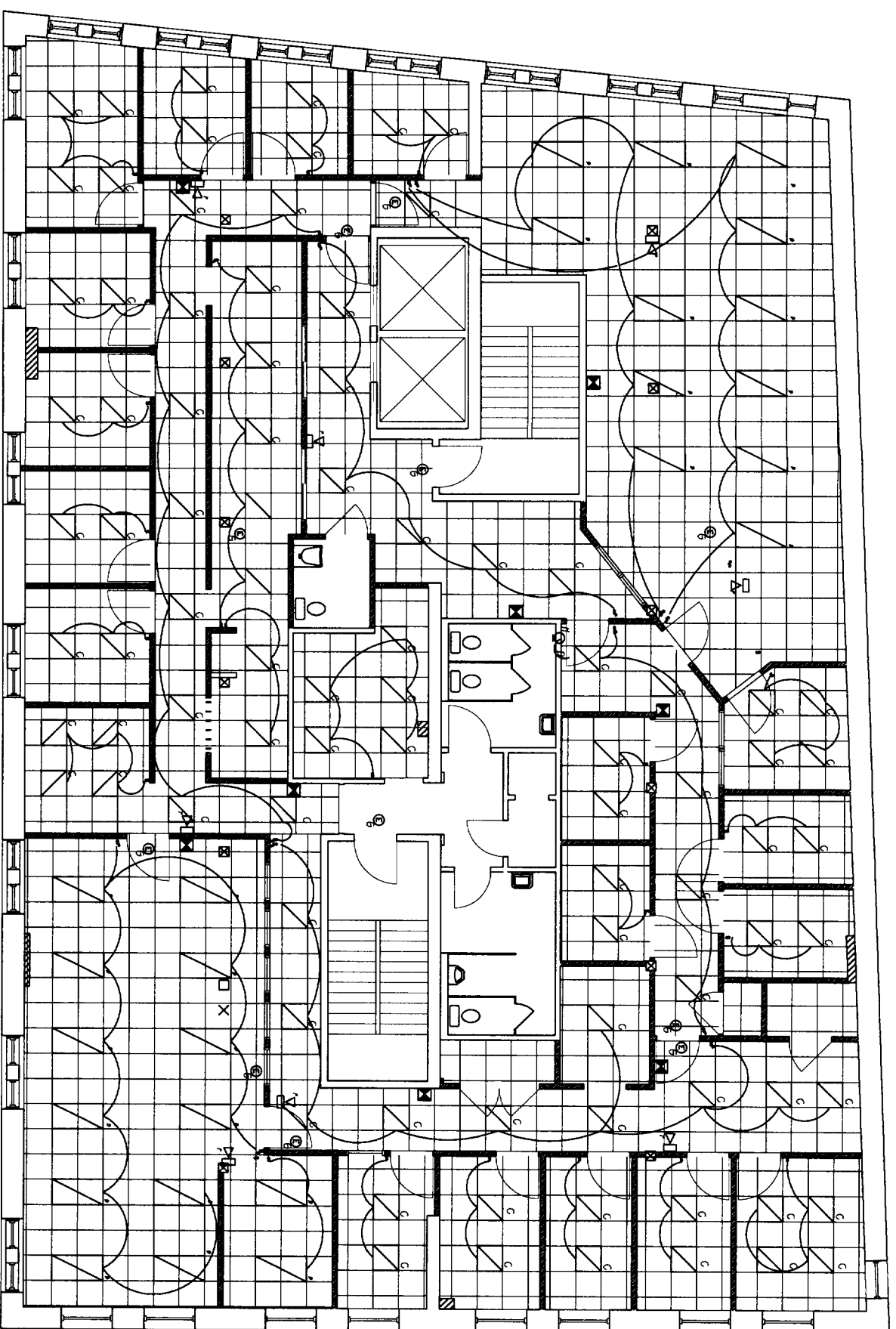
Sheet Number
F1.3

ELECTRICAL LEGEND



GENERAL ELECTRICAL NOTES

1. ALL WORK SHALL CONFORM TO THE LATEST EDITION OF LOCAL STATE CODES, THE N.E.C. AND NFPA 70.
2. THIS CONTRACTOR SHALL BE RESPONSIBLE FOR BALANCING THE LOAD IN THE PANEL.
3. SWITCHES SHALL BE MOUNTED 4'-0" TO TOP OF PANEL. SWITCHES SHOWN IN SAME AREA SHALL BE GANGED UNDER A COMMON PLATE. GANGE SWITCHES AS CLOSE AS POSSIBLE TO EDGE OF DOOR FRAME. ON LOOK SIZE.
4. MINIMUM WIRE SIZE SHALL BE #12 AWG COPPER. ALL REFERENCE TO WIRE SIZE IS INTENDED AS COPPER CIRCUIT BREAKER SIZE (AS PER PANEL SCHEDULE) SHALL INDICATE WIRE SIZE OF ALL CONDUCTORS.
5. THE ENTIRE ELECTRICAL SYSTEM SHALL BE GROUNDING BY MEANS OF A SEPARATE GROUND CONDUCTOR. CONDUIT SHALL NOT BE CONSIDERED A GROUND CONDUCTOR, BUT SHALL BE GROUNDING (SEE TABLE 250-95 N.E.C.).
6. THIS CONTRACTOR SHALL COORDINATE WITH OTHER TRADES WHERE EQUIPMENT AND/OR DEVICES ARE FINISHED BY OTHER TRADES AND WIRING WHOLLY OR IN PART BY THIS CONTRACTOR SO AS TO ACHIEVE A COMPLETE AND OPERATING SYSTEM.
7. ALL HANGERS TO PANEL, IN EXCESS OF 100 FEET SHALL BE AT LEAST #10 AWG COPPER.
8. OUTLETS, JUNCTION BOXES OR PULL BOXES MOUNTED BACK TO BACK SHALL BE PROHIBITED.
9. THIS CONTRACTOR SHALL VERIFY MOUNTING HEIGHTS FOR ALL OUTLETS. COORDINATE RECEPTACLES CAREFULLY PRIOR TO INSTALLATION, NOT RECEPTACLES AND OTHER OUTLETS TO CLEAR HANGING UNITS AND COMPATIBILITY WITH VOA.
10. ALL RISE SCHEMATICS SHOWN ARE DIMENSIONAL. ONLY REFER TO EQUIPMENT AND CONDUIT MANUFACTURERS SHOP DRAWINGS FOR EXACT WIRING.
11. THIS CONTRACTOR SHALL MAINTAIN THE INTEGRITY OF FIRE RATED WALLS BY SEALING ALL WIRING CONDUIT, ETC., WHICH PASSES THROUGH SUCH WALLS WITH AN APPROVED FIRE RATED SEALANT.
12. DRAWINGS DO NOT NECESSARILY SHOW ALL ITEMS INCLUDED IN THE SYSTEM. REFER TO FLOOR PLANS, ETC. FOR COMPLETE SYSTEM.
13. LOCATION OF ALL LIGHTING FIXTURES, RECEPTACLES, TELEPHONE OUTLETS, ETC. SHALL BE CONFIRMED AND VERIFIED FROM ARCHITECTURAL DRAWINGS. ELEVATIONS, SECTIONS, DETACHED DETAILS, ETC.
14. THE LIGHTING FIXTURE SCHEDULE SHALL NOT BE THE SOLE LIGHTING REFERENCE. REFER TO THE DRAWINGS TO VERIFY QUANTITIES, BALAST CONFIGURATIONS AND DIMENSIONS OF FIXTURES PRIOR TO ORDERING.
15. PRIOR TO INSTALLING NEW WIRING DEVICES, COORDINATE WITH THE ARCHITECT ALONG DEVICE LOCATIONS TO BE RELOCATED 6 FEET IN ANY DIRECTION.
16. ALL CIRCUITS SHALL BE CLEARLY MARKED AND IMPRINTED IN ELECTRICAL PANEL.
17. ALL WIRING ELECTRICAL PANELS ARE LOCATED IN GENERAL ELECTRICAL CABINET EACH FLOOR. IT SHALL BE THE ELECTRICAL CONTRACTORS RESPONSIBILITY TO DETERMINE LOCATION/COMPACT/CONDITION PRIOR TO BID.



NOTE:
ELECTRICAL CONTRACTOR SHALL PROVIDE THE ARCHITECTOR HIS PROPOSED CIRCUIT LOADS FOR REMOVAL PRIOR TO INSTALLATION.

Fourth Floor Lighting Plan

LIGHTING FIXTURE SCHEDULE

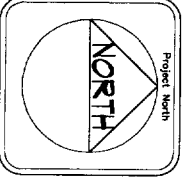
TYPE	MANUFACTURER	CATALOG NO.	LAMPS	MOUNTING & DESCRIPTION
A	NOT USED			
B	Corona	F-224-552R-9-28-5-12-20	40 T12 40W	24 CELL RECESSED PARABOLIC
C	Corona	PZZZ-240T	40T 40 W T8M T8E FLOOR/CEILING	9 CELL PZ ADD EFFICIENCY PARABOLIC
D	Ultralux	TUJ 20 W/20R	20 W 15-12	Joint Splice Luminaire
E	Ultralux	SOJINW/CCL W/80/8U	8 WATT TRIPLE TUBE	CASCADE CONTRACTED RECESSED OPEN CONDUIT
F	Ultralux	E-23-W-2W	2W Incandescent	Emergency Exit Lighting Mr-7-07 AFF
G	Ultralux	48022A-54d	15 8-Watt Fluorescent	Mr-7-06 AFF, cabinet mount, 5ft. fixture
H	Ultralux	5403-W/18	2-25 W T8	Mr-Kove Mirror



Wornand Associates Architects
185 Park Ave. 9th Fl.
Portland, Maine 04101
Tel: (207) 725-1729
Email: info@wornand.com

Fourth Floor Lighting Plan
Scale: 3/16" = 1'-0"
Date: June, 2005

Project: Ingraham Offices
Client: Service Floor
50 Monument Square
Portland, Maine



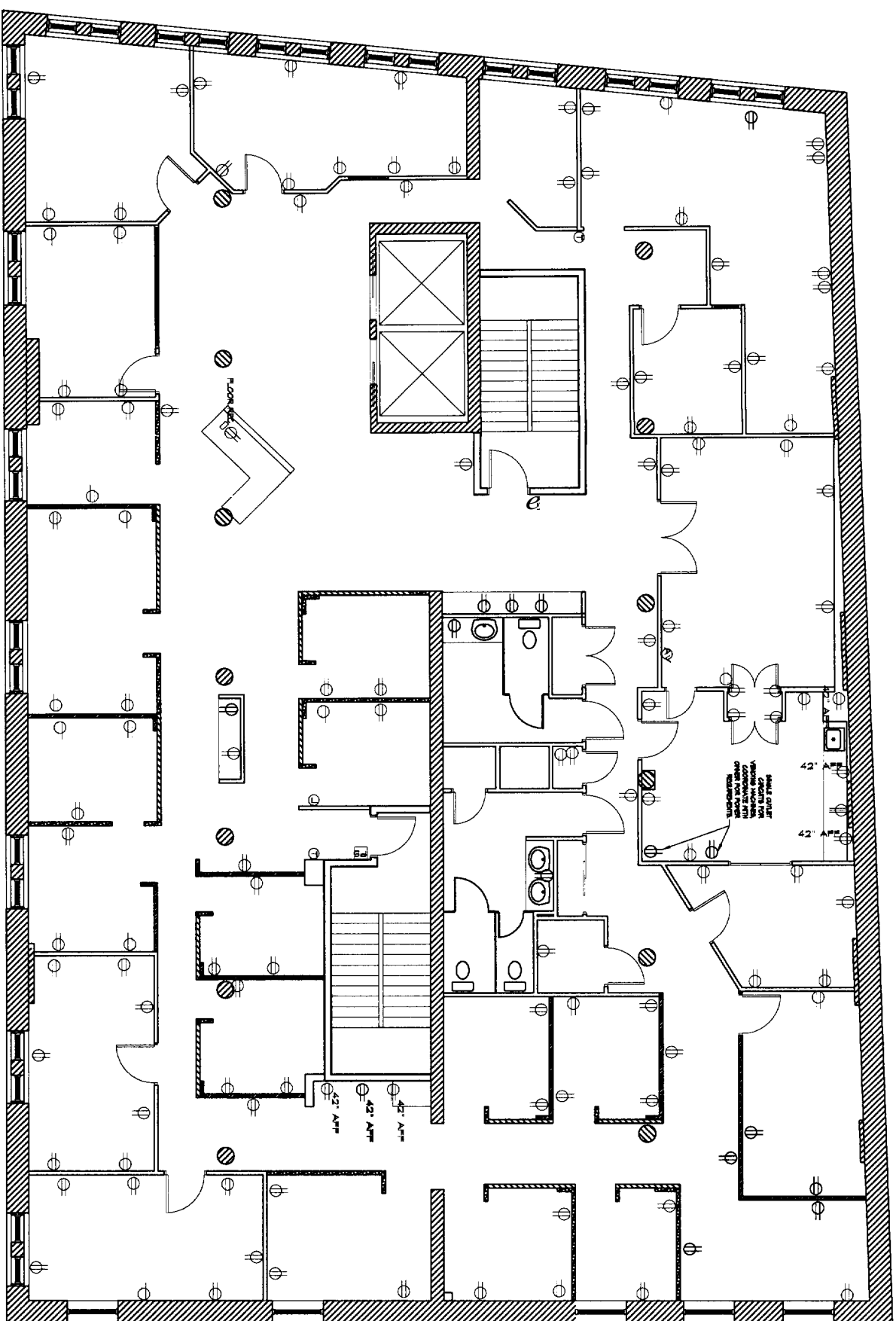
Sheet Number
E1.4

ELECTRICAL LEGEND

	- ELEC METER
	- FLUORESCENT FIXTURE
	- LIGHTING FIXTURE - WALL OUTLET
	- LIGHTING FIXTURE - CEILING OUTLET
	- CEILING LIGHT WALL CHAIN
	- CEILING MOUNTED FAN
	- RECESSED FIXTURE
	- SCONCE LIGHT FIXTURE
	- UNDER COUNTER FLUORESCENTS - IN MODULES OF 2, 3 OR 4
	- TELEVISION JACK
	- COMPUTER
	- SPEAKER
	- DUPLEX CONVENIENCE OUTLET (B) 15 AMP EXCEPT AS NOTED
	- DUPLEX CONVENIENCE OUTLET (B) 15 AMP SWITCHED
	- 220 OUTLET
	- GROUND FAULT INTERRUPT OUTLET
	- ABOVE FINISH FLOOR
	- JUNCTION BOX - SIZED AS REQUIRED
	- DOOR BELL
	- SINGLE POLE SWITCH
	- THREE WAY SWITCH
	- FOUR WAY SWITCH
	- DIMMER SWITCH
	- HEATER/ROOM
	- BATHROOM EXHAUST FAN/LIGHT COMBO
	- AUDIBLE ALARM
	- EMERGENCY LIGHT
	- MOTOR
	- THERMOSTAT
	- SMOKE DETECTOR
	- HEAT DETECTOR
	- ANNALS
	- DATA
	- CABLE
	- VOICE
	- TELEPHONE EQUIPMENT/MEDICINE HOOKUPS
	- KERFAPAD ENTRY

GENERAL ELECTRICAL NOTES

1. ALL WORK SHALL CONFORM TO THE LATEST EDITION OF LOCAL, STATE CODES, THE N.E.C. AND NFPA 70.
2. THIS CONTRACTOR SHALL BE RESPONSIBLE FOR BALANCING THE LOAD IN THE PANEL.
3. SWITCHES SHALL BE MOUNTED 4'-0" TO TOP OF PANEL. SWITCHES SHOWN IN SAME AREA SHALL BE GAUGED UNDER A COMMON PLATE. LOCATE SWITCHES AS CLOSE AS POSSIBLE TO EDGE OF DOOR FRAME ON LOCK SIDE.
4. MINIMUM WIRE SIZE SHALL BE #12 AWG COPPER ALL REFERENCE TO WIRE SIZE IS MEANED AS COPPER CIRCUIT BREAKER SIZE (ASTERISKED, SCHEDULED) SHALL DENOTE WIRE SIZE OF ALL CONDUCTORS.
5. THE ENTIRE ELECTRICAL SYSTEM SHALL BE GROUNDING BY MEANS OF A SEPARATE GROUND CONDUCTOR CONDUIT SHALL NOT BE CONSIDERED A GROUND CONDUCTOR BUT SHALL BE GROUNDING (USE TABLE 250-95 N.E.C.) THIS CONTRACTOR SHALL COORDINATE WITH OTHER TRADES WHERE EQUIPMENT AND/OR DEVICES ARE FINISHED BY OTHER TRADES AND WIRED WHOLLY OR IN PART BY THIS CONTRACTOR SO AS TO ACHIEVE A COMPLETE AND OPERATING SYSTEM.
6. ALL HANGERS TO PANEL, IN EXCESS OF 100 FEET SHALL BE AT LEAST #10 AWG COPPER.
7. OUTLETS, JUNCTION BOXES OR PHONE BOXES MOUNTED BACK TO BACK SHALL BE PROHIBITED.
8. THIS CONTRACTOR SHALL VERIFY MOUNTING HEIGHTS FOR ALL OUTLETS, COORDINATE RECEPTACLES CAREFULLY PRIOR TO INSTALLATION, MOUNT RECEPTACLES AND OTHER OUTLETS TO CLEAR FINISH UNITS AND COMP. WITH HVAC.
9. ALL HANG SCHEMATICS SHOWN ARE DIAGRAMMATIC ONLY. REFER TO EQUIPMENT AND CONTROL MANUFACTURER'S SHOP DRAWINGS FOR EXACT WIRING.
10. THIS CONTRACTOR SHALL MAINTAIN THE INTEGRITY OF THE RATED WALLS BY SEALING ALL WIRING CONDUIT, ETC. WHICH PASSES THROUGH SUCH WALLS WITH AN APPROVED FIRE RATED SEALANT.
11. DIAGRAMS DO NOT NECESSARILY SHOW ALL ITEMS INCLUDED IN THE SYSTEM, REFER TO FLOOR PLANS, ETC. FOR COMPLETE SYSTEM.
12. LOCATION OF ALL JOINTING FIXTURES, RECEPTACLES, TELEPHONE OUTLETS, ETC. SHALL BE CONFIRMED AND VERIFIED FROM ARCHITECTURAL DRAWINGS, I.E. ELEVATIONS, SECTIONS, REFLECTED CEILINGS, ETC.
13. THE LIGHTING FIXTURE SCHEDULE SHALL NOT BE THE SOLE LIGHTING REFERENCE. REFER TO THE DRAWINGS TO VERIFY QUANTITIES, BALAST CONFIGURATIONS, AND DIMENSIONS OF FIXTURES PRIOR TO ORDERING.
14. PRIOR TO INSTALLING NEW WIRING DEVICES, COORDINATE WITH THE ARCHITECT. ALLOW DEVICE LOCATIONS TO BE RELOCATED 6 FEET IN ANY DIRECTION.
15. RELOCATED 6 FEET IN ANY DIRECTION.
16. A. REFER TO THE DATA SHEET FOR THE WIRING AND THE PREPARED ELECTRICAL PANEL.



Second Floor Power Plan

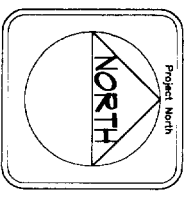
NOTE: ELECTRICAL CONTRACTOR SHALL PROVIDE THE ARCHITECT OF HIS PROPOSAL CIRCUIT LAYOUT FOR APPROVAL PRIOR TO INSTALLATION



Normand Associates Architects
 150 Park Row West
 Portland, ME 04101
 Phone (207) 725-1460
 Fax (207) 725-1759
 Email: info@normand.com

Title: Second floor Power Plan
 Scale: 3/16" = 1'-0"
 Date: August 10, 2005

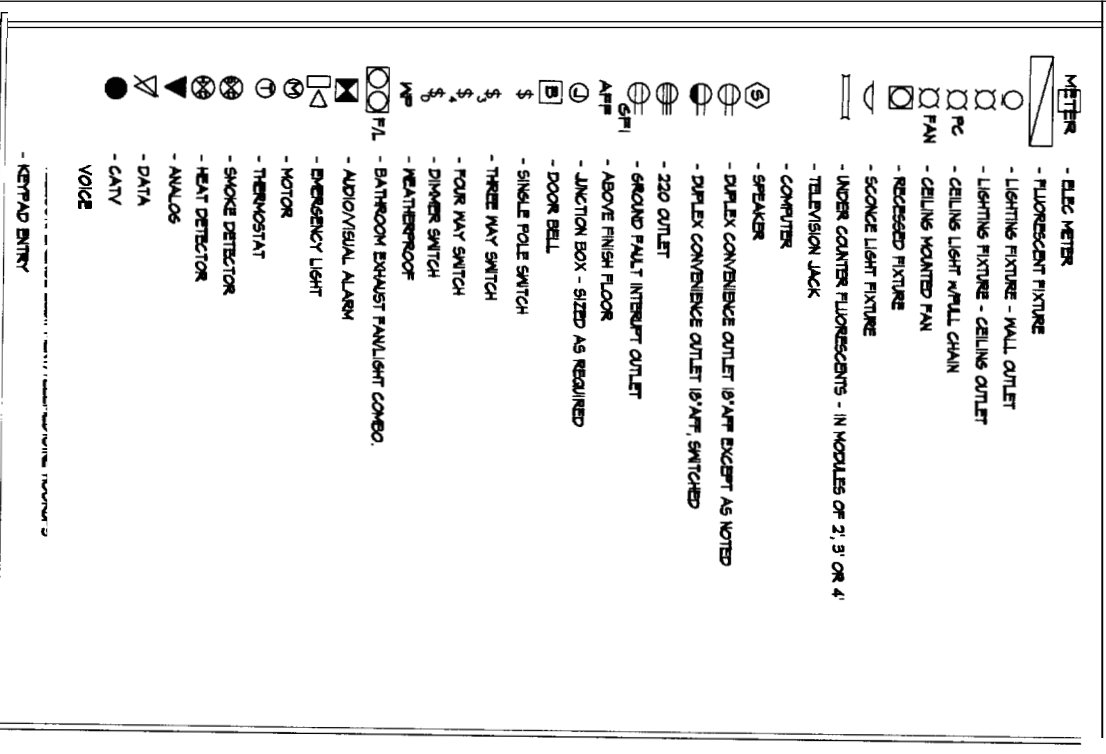
Project: New Offices for Ingraham, Inc.
 50 Monument
 Portland, Maine



Revision

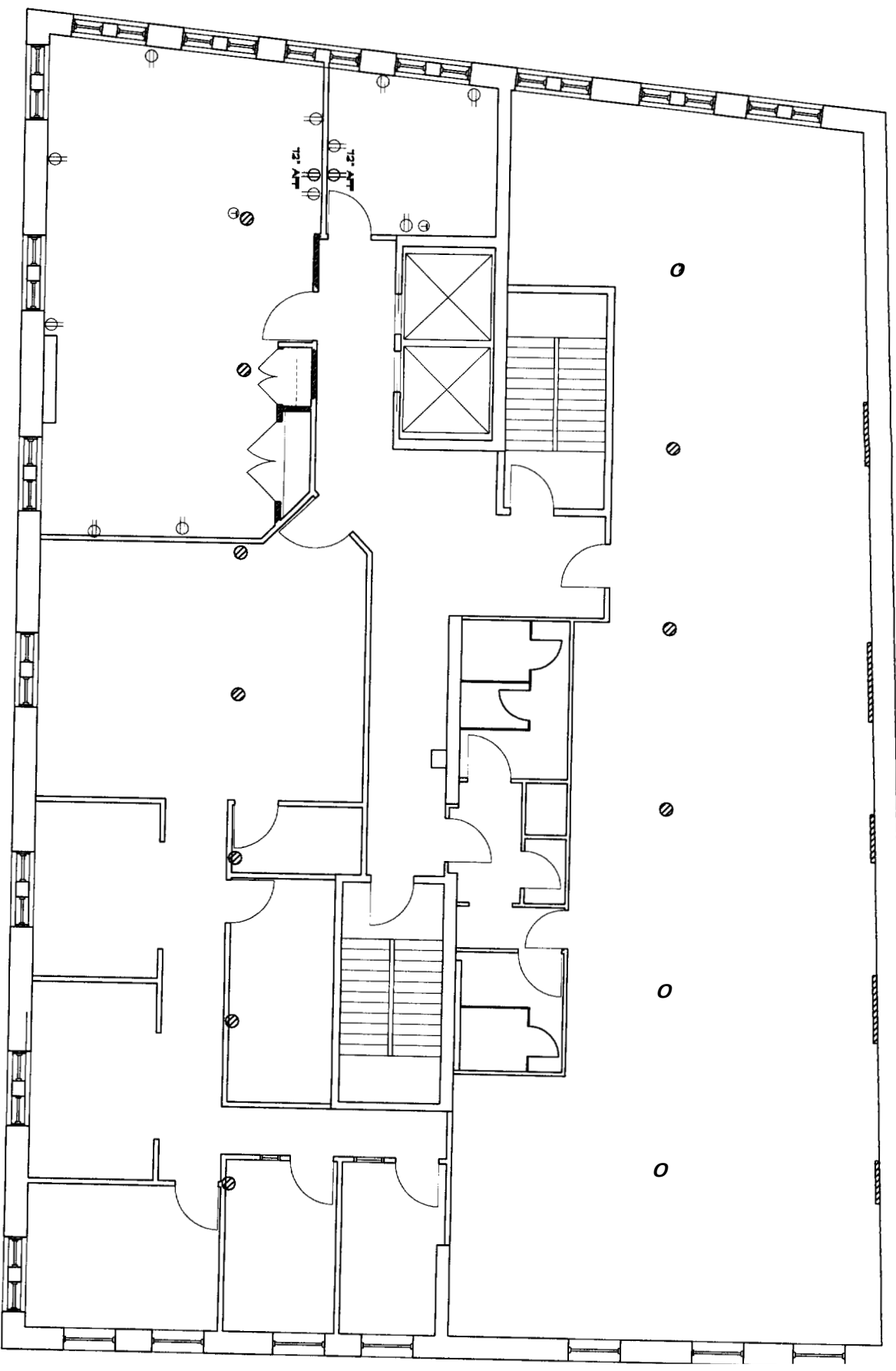
Sheet Number: E2.2

ELECTRICAL LEGEND



GENERAL ELECTRICAL NOTES

1. ALL WORK SHALL CONFORM TO THE LATEST EDITION OF LOCAL STATE CODES, THE N.E.C., AND V.P.A.I.O.I.
2. THIS CONTRACTOR SHALL BE RESPONSIBLE FOR BALANCING THE LOAD IN THE PANEL.
3. SWITCHES SHALL BE MOUNTED 4'-0" TO TOP OF PLATE. SWITCHES SHOWN IN SAME AREA SHALL BE GANGED UNDER A COMMON PLATE. LOCATE SWITCHES AS CLOSE AS POSSIBLE TO EDGE OF DOOR FRAME ON JOCK SIDE.
4. MINIMUM WIRE SIZE SHALL BE #12 AWG COPPER. ALL REFERENCE TO WIRE SIZE IS INTENDED AS COPPER CIRCUIT BREAKER SIZE (AS PER PANEL SCHEDULES) SHALL OBTAIN WIRE SIZE OF ALL CONDUCTORS.
5. THE ENTIRE ELECTRICAL SYSTEM SHALL BE GROUNDING BY MEANS OF A SEPARATE GROUND CONDUCTOR CONDUIT SHALL NOT BE CONSIDERED A GROUND CONDUCTOR, BUT SHALL BE GROUNDING (USE PAR. 250-95 N.E.C.)
6. THIS CONTRACTOR SHALL COORDINATE WITH OTHER TRADES WHERE EQUIPMENT AND/OR DEVICES ARE FINISHED BY OTHER TRADES AND WERE WHOLLY OR IN PART BY THIS CONTRACTOR SO AS TO ACHIEVE A COMPLETE AND OPERATING SYSTEM.
7. ALL HOMERUNS TO PANEL, EXCESS OF 100 FEET SHALL BE AT LEAST #10 AWG COPPER.
8. OUTLETS, JUNCTION BOXES OR PHONE BOXES MOUNTED BACK TO BACK SHALL BE PROHIBITED.
9. THIS CONTRACTOR SHALL VERIFY MOUNTING HEIGHTS FOR ALL OUTLETS, COORDINATE RECEPTACLES CAREFULLY PRIOR TO INSTALLATION, MOUNT RECEPTACLES AND OTHER OUTLETS TO CLEAR FURNITURE, UNITS AND CONTROL WITH A 1/4" ALLOWANCE. ALL NEW SCHEMATICS SHOWN ARE DIAGRAMMATIC ONLY. REFER TO EQUIPMENT AND CONTROL MANUFACTURER'S SHOP DRAWINGS FOR EXACT WIRING.
10. THIS CONTRACTOR SHALL MAINTAIN THE INTEGRITY OF FIRE RATED WALLS BY SEALING ALL WIRING, CONDUIT, ETC., WHICH PASSES THROUGH SUCH WALLS WITH AN APPROVED FIRE RATED SEALANT.
11. DIAGRAMS DO NOT NECESSARILY SHOW ALL ITEMS INCLUDED IN THE SYSTEM. REFER TO FLOOR PLANS, ETC. FOR COMPLETE SYSTEM.
12. LOCATION OF ALL LIGHTING FIXTURES, RECEPTACLES, TELEPHONE OUTLETS, ETC. SHALL BE CONFIRMED AND VERIFIED FROM ARCHITECTURAL DRAWINGS, I.E. ELEVATIONS, SECTIONS, REFLECTED CEILING, ETC.
13. THE LIGHTING FIXTURE SCHEDULE SHALL NOT BE THE SOLE LIGHTING REFERENCE. REFER TO THE DRAWINGS TO VERIFY QUANTITIES, BALANCE CONFIGURATIONS, AND DIMENSIONS OF FIXTURES PRIOR TO ORDERING.
14. PRIOR TO INSTALLING NEW WIRING DEVICES, COORDINATE WITH THE ARCHITECT. ALLOW DEVICES LOCATIONS TO BE RELOCATED 6 FEET IN ANY DIRECTION.
15. ALL CIRCUITS SHALL BE CLEARLY MARKED AND TYPEWRITTEN IN ELECTRICAL PANEL.



Third Floor Power Plan

NOTE: ELECTRICAL CONTRACTOR SHALL PROVIDE THE ARCHITECT OF HIS PROPOSAL CIRCUIT LAYOUT FOR APPROVAL PRIOR TO INSTALLATION

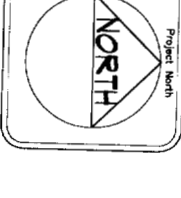


Normand Associates Architects
 150 Park Row North
 Portland, Maine 04101
 Phone (207) 725-4460
 Fax (207) 725-1759
 Email info@normand.com

Stamp

Title: Third Floor Power Plan
 Scale: 3/16" = 1'-0"
 Date: August 10, 2005

Project: New Offices for Ingraham Inc.
 50 Monument Square
 Portland, Maine



Revisions

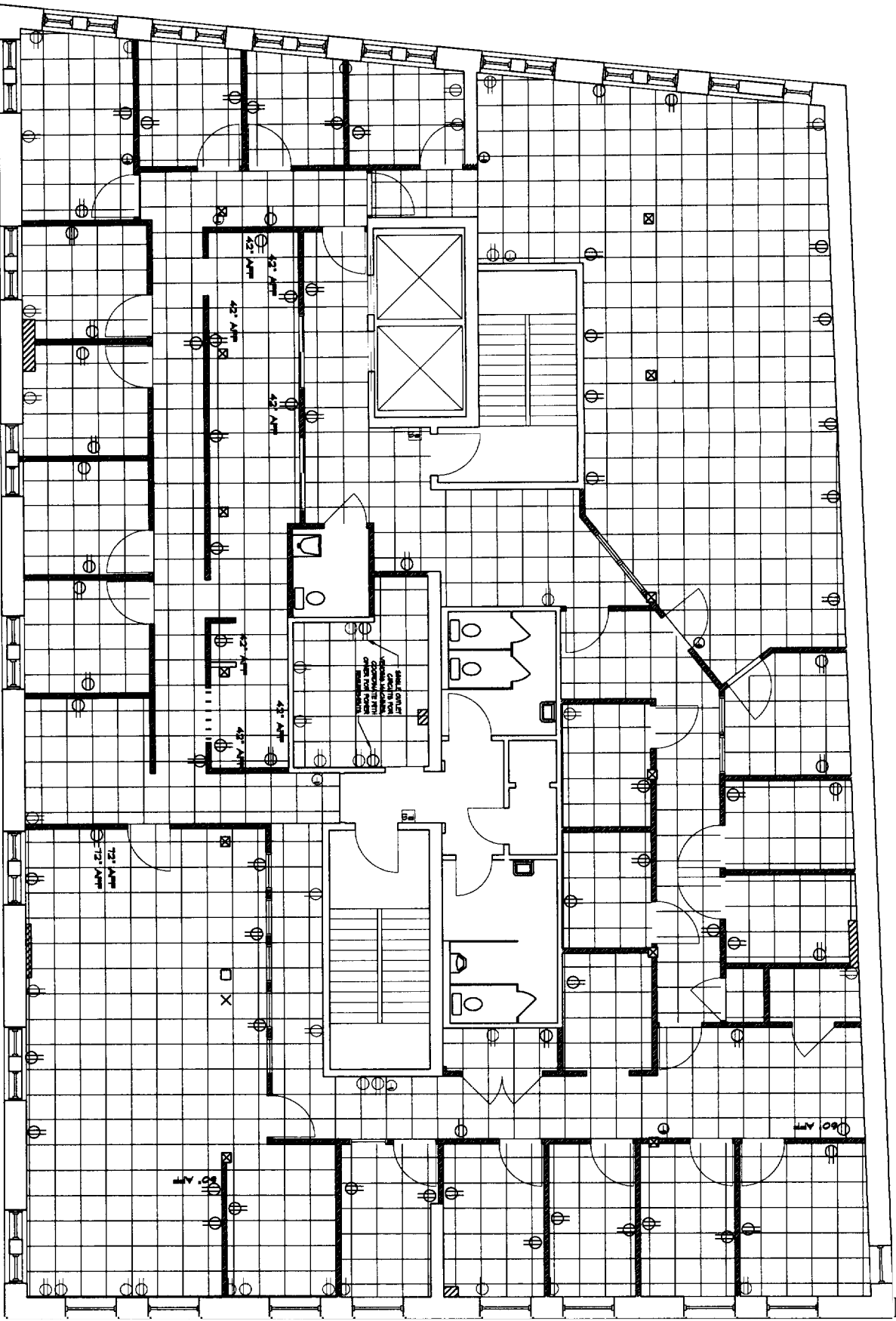
Sheet Number: E2.3

ELECTRICAL LEGEND

- ⊖ - ELEC METERS
- ⊖ - FLUORESCENT FIXTURE
- ⊖ - LIGHTING FIXTURE - WALL OUTLET
- ⊖ - LIGHTING FIXTURE - CEILING OUTLET
- ⊖ - CEILING MOUNTED FAN
- ⊖ - RECESSED FIXTURE
- ⊖ - SCOOCE LIGHT FIXTURE
- ⊖ - UNDER COUNTER FLUORESCENTS - IN HOODS 2' SPICR
- ⊖ - TELEVISION JACK
- ⊖ - COMPUTER
- ⊖ - SPEAKER
- ⊖ - DUAL IN LINE CONVENIENCE OUTLET 18" AMP BROOKS NOTED
- ⊖ - DUAL IN LINE CONVENIENCE OUTLET 18" AMP BEMERH
- ⊖ - 220 OUTLET
- ⊖ - GROUND FAULT INTERRUPT OUTLET
- ⊖ - ABOVE FINISH FLOOR
- ⊖ - JUNCTION BOX - SIZED AS REQUIRED
- ⊖ - DOOR BELL
- ⊖ - SINGLE POLE SWITCH
- ⊖ - THREE WAY SWITCH
- ⊖ - FOUR WAY SWITCH
- ⊖ - DIMMER SWITCH
- ⊖ - HEATER/ROOMF
- ⊖ - BATHROOM EXHAUST FAN/LIGHT COMBO
- ⊖ - AUDIOVISUAL ALARM
- ⊖ - EMERGENCY LIGHT
- ⊖ - MOTOR
- ⊖ - THERMOSTAT
- ⊖ - SMOKE DETECTOR
- ⊖ - HEAT DETECTOR
- ⊖ - ANALOG
- ⊖ - DATA
- ⊖ - CAVY
- ⊖ - VOICE
- ⊖ - TELECOMMUNICATIONS EQUIPMENT/TELEPHONE HOOKUPS
- ⊖ - KEYPAD ENTRY

GENERAL ELECTRICAL NOTES

1. ALL WORK SHALL CONFORM TO THE LATEST EDITION OF LOCAL STATE CODES, THE N.E.C. AND NFPA 101.
2. THIS CONTRACTOR SHALL BE RESPONSIBLE FOR OBTAINING THE LOAD IN THE PANEL.
3. SWITCHES SHALL BE MOUNTED 4'-0" TO TOP OF PLANE. SWITCHES SHOWN IN SAME AREA SHALL BE GANGED UNDER A COMMON PANEL. LOCATE SWITCHES AS CLOSE AS POSSIBLE TO EDGE OF DOOR FRAME ON LOCK SIDE.
4. MINIMUM WIRE SIZE SHALL BE #12 AWG COPPER A.L. REFERENCE TO WIRE SIZE IS INTENDED AS COPPER CIRCUIT BREAKER SIZE (AS PER PANEL SCHEDULES) SHALL INDICATE WIRE SIZE OF ALL CONDUCTORS.
5. EACH FLOOR HAS ONE OR MORE SEPARATE 5. IT IS THE RESPONSIBILITY OF THE ELECTRICAL CONTRACTOR TO EVALUATE THE POTENTIAL OF RE-USE OR RE-PLACEMENT. THIS EVALUATION AND REASONING SHOULD BE PROVIDED TO THE ARCHITECT AS A PART OF THE B.O. MAIN POWER DISTRIBUTION SYSTEM THE BASEMENT.
6. THIS CONTRACTOR SHALL COORDINATE WITH OTHER TRADES WHERE EQUIPMENT AND/OR DEVICES ARE FINISHED BY OTHER TRADES AND WERE WHOLLY OR IN PART BY THIS CONTRACTOR SO AS TO ACHIEVE A COMPLETE AND OPERATING SYSTEM.
7. ALL HOOKUPS TO PANEL IN EXCESS OF 100 FEET SHALL BE AT LEAST #10 AWG COPPER.
8. OUTLETS, JUNCTION BOXES OR PHONE BONES MOUNTED BACK TO BACK SHALL BE PROHIBITED.
9. THIS CONTRACTOR SHALL VERIFY MOUNTING HEIGHTS FOR ALL OUTLETS, COORDINATE RECEPTACLES CAREFULLY PRIOR TO INSTALLATION. MOUNT RECEPTACLES AND OTHER OUTLETS TO DEPARTMENTS UNITS AND COMP. WITH NOVA. ALL REVISIONS SHOWN ARE DIAGRAMMATIC. ONLY REFER TO EQUIPMENT AND CONTROL MANUFACTURER'S SHOP DRAWINGS FOR EXACT WIRING. REFER TO THE REFLECTED CEILING DRAWING A-7 FOR COORDINATION.
10. THIS CONTRACTOR SHALL MAINTAIN THE INTEGRITY OF ANY FIRE RATED WALLS BY SEALING ALL WIRING, CONDUIT, ETC. WHICH PASSES THROUGH SUCH WALLS WITH AN APPROVED FIRE RATED SEALANT.
11. DRAWINGS DO NOT NECESSARILY SHOW ALL ITEMS INCLUDED IN THE SYSTEM. REFER TO FLOOR PLANS, ETC. FOR COMPLETE SYSTEM.
12. LOCATION OF ALL LIGHTING FIXTURES, RECEPTACLES, TELEPHONE OUTLETS, ETC. SHALL BE CONFIRMED AND VERIFIED FROM ARCHITECTURAL DRAWINGS, I.E. ELEVATIONS, SECTIONS, REFLECTED CEILING, ETC.
13. THE LIGHTING FIXTURE SHEET SHALL NOT BE THE SOLE LIGHTING REFERENCE. REFER TO THE DRAWINGS TO VERIFY QUANTITIES, BALAST CONFIGURATIONS AND DIMENSIONS OF FIXTURES PRIOR TO BIDDING.
14. PRIOR TO INSTALLING NEW WIRING DEVICES, COORDINATE WITH THE ARCHITECT ALONG DEVICE LOCATIONS TO BE RE-LOCATED 6 FEET IN ANY DIRECTION.
15. ALL CIRCUITS SHALL BE CLEARLY MARKED AND REWRITTEN IN ELECTRICAL PANEL.



Fourth Floor Power Plan

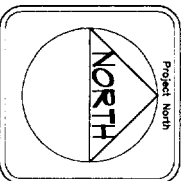
NOTE:
ELECTRICAL CONTRACTOR SHALL PROVIDE THE ARCHITECT OF HIS PROPOSED CIRCUIT LAYOUT FOR APPROVAL PRIOR TO INSTALLATION



Normand Associates Architects
155 Park Row
Portland, Maine 04111
Phone (207) 725-4800
Fax (207) 725-4800
Email: info@normand.com

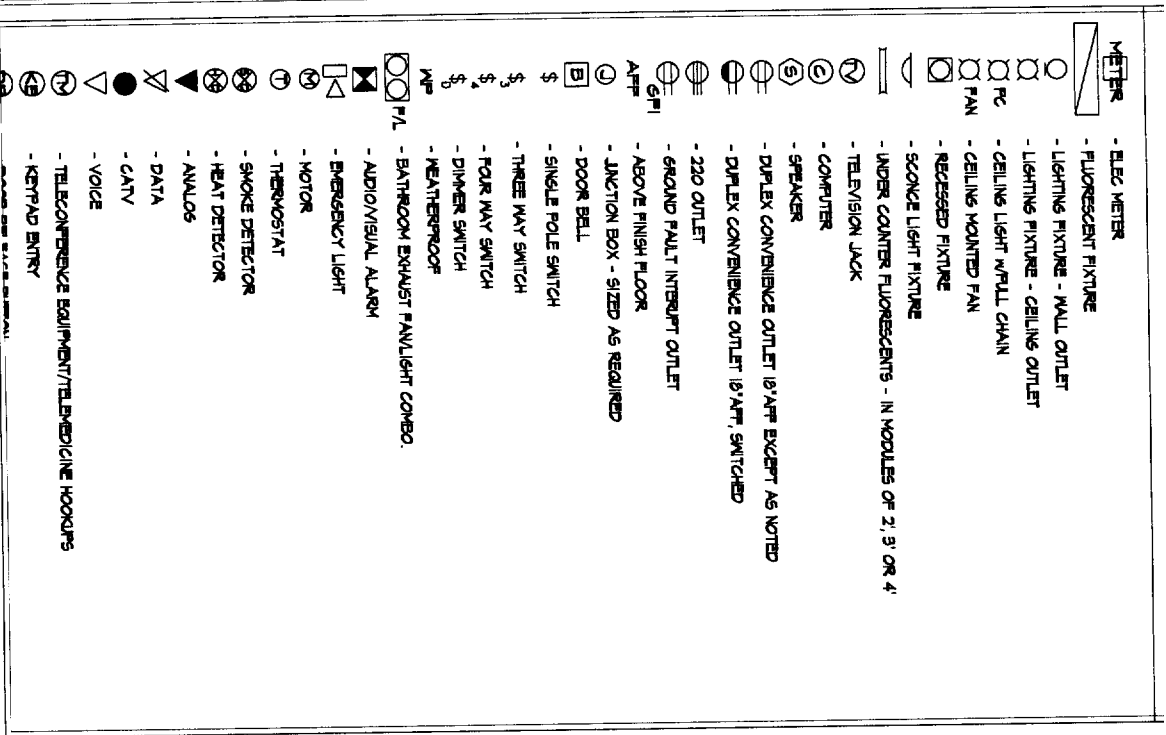
The
Fourth Floor Power Plan
Scale: 3/16" = 1'-0"
Date: August 10, 2005

Project
**New Offices for
Ingraham Offices
50 Monument Square
Portland, Maine**



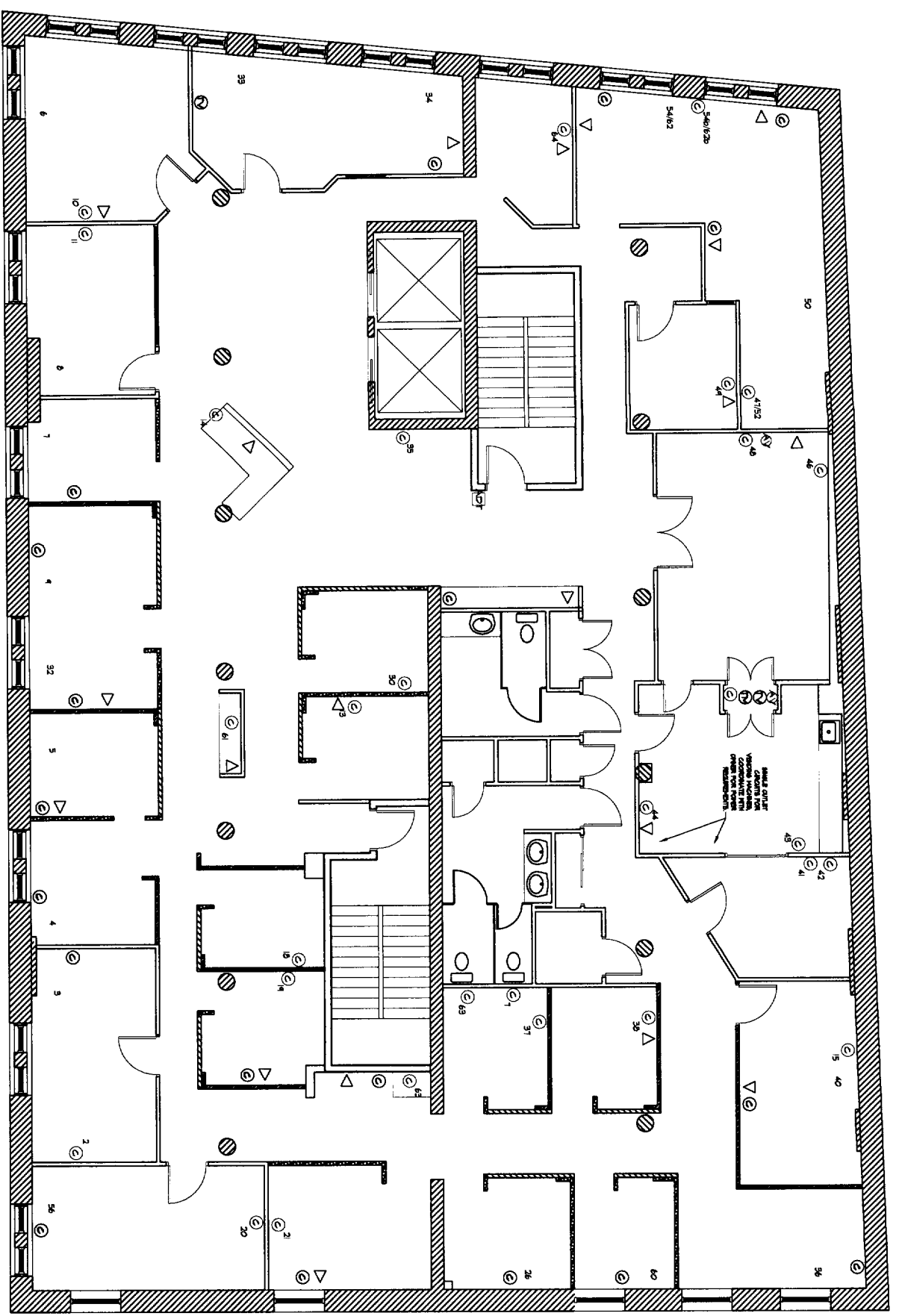
Revisions

Sheet Number
E2.4



GENERAL ELECTRICAL NOTES

1. ALL WORK SHALL CONFORM TO THE LATEST EDITION OF LOCAL STATE CODES, THE N.E.C. AND NFPA 70E.
2. THIS CONTRACTOR SHALL BE RESPONSIBLE FOR BALANCING THE LOAD IN THE PANEL.
3. SWITCHES SHALL BE MOUNTED 4'-0" TO TOP OF PANEL. SWITCHES SHOWN IN SAME AREA SHALL BE GANGED UNDER A COMMON PANEL. LOCATE SWITCHES AS CLOSE AS POSSIBLE TO EDGE OF DOOR FRAME ON LOCK SIDE.
4. MINIMUM WIRE SIZE SHALL BE #12 AWG COPPER. ALL REFERENCE TO WIRE SIZE IS INTENDED AS COPPER. CIRCUIT BREAKER SIZE (AS PER PANEL SCHEDULE) SHALL DEFINE WIRE SIZE OF ALL CONDUCTORS.
5. THE ENTIRE ELECTRICAL SYSTEM SHALL BE GROUNDING BY MEANS OF A SEPARATE GROUND CONDUCTOR. CONDUIT SHALL NOT BE CONSIDERED A GROUND CONDUCTOR, BUT SHALL BE GROUNDING. USE TABLE 250-95, N.E.C.
6. THIS CONTRACTOR SHALL COORDINATE WITH OTHER TRADES WHERE EQUIPMENT AND/OR DEVICES ARE PLACED BY OTHER TRADES AND WERE WHOLLY OR IN PART BY THIS CONTRACTOR SO AS TO ACHIEVE A COMPLETE AND OPERATING SYSTEM.
7. ALL HOMERUNS TO PANEL, NECESSARY TOOD FEET SHALL BE AT LEAST #10 AWG COPPER.
8. OUTLETS, JUNCTION BOXES OR PHONE BOXES MOUNTED BACK TO BACK SHALL BE PROHIBITED.
9. THIS CONTRACTOR SHALL VERIFY MOUNTING HEIGHTS FOR ALL OUTLETS. COORDINATE RECEPTACLES CAREFULLY PRIOR TO INSTALLATION. MOUNT RECEPTACLES AND OTHER OUTLETS TO CLEAR HEATING UNITS AND COMPACTLY WITH ADA.
10. ALL HEAVY SCHEMATICS SHOWN ARE DIAGRAMMATICAL ONLY. REFER TO EQUIPMENT AND CONDUIT MANUFACTURER'S SHOP DRAWINGS FOR EXACT WIRING.
11. THIS CONTRACTOR SHALL MAINTAIN THE INTEGRITY OF EXISTING WALS BY SEPARATING ALL WIRING CONDUIT ETC. WHICH PASSES THROUGH SUCH WALLS WITH AN APPROVED FIRE RATED SEALANT.
12. DRAWINGS DO NOT VERTICALLY SHOW ALL ITEMS NOTED IN THE SYSTEM. REFER TO FLOOR PLANS ETC. FOR COMPLETE SYSTEM.
13. LOCATION OF ALL LIGHTING FIXTURES, RECEPTACLES, TELEPHONE OUTLETS, ETC. SHALL BE CONFIRMED AND VERIFIED FROM ARCHITECTURAL DRAWINGS. E. ELEVATIONS, SECTIONS, REFLECTED CEILINGS, ETC.
14. THE LIGHTING FIXTURE SCHEDULE SHALL NOT BE THE SOLE LIGHTING REFERENCE. REFER TO THE DRAWINGS TO VERIFY QUANTITIES, BALANCE CONFIGURATIONS AND DIMENSIONS OF FIXTURES PRIOR TO ORDERING.
15. PRIOR TO INSTALLING NEW WIRING DEVICES, COORDINATE WITH THE ARCHITECT ALLOW DEVICE LOCATIONS TO BE RELOCATED 6 FEET IN ANY DIRECTION.



Second Floor Power Plan

NOTE:
ELECTRICAL CONTRACTOR SHALL PROVIDE THE ARCHITECT OF HIS PROPOSAL CIRCUIT LAYOUT FOR APPROVAL PRIOR TO INSTALLATION

Sheet Number
FB.2

Project North
NORTH

Project
**New Offices for
Ingraham, Inc.
50 Monument
Portland, Maine**

Title
**Second Floor
Communications Plan
Scale: 3/16" = 1'-0"
Date: August 10, 2005**

Stamp

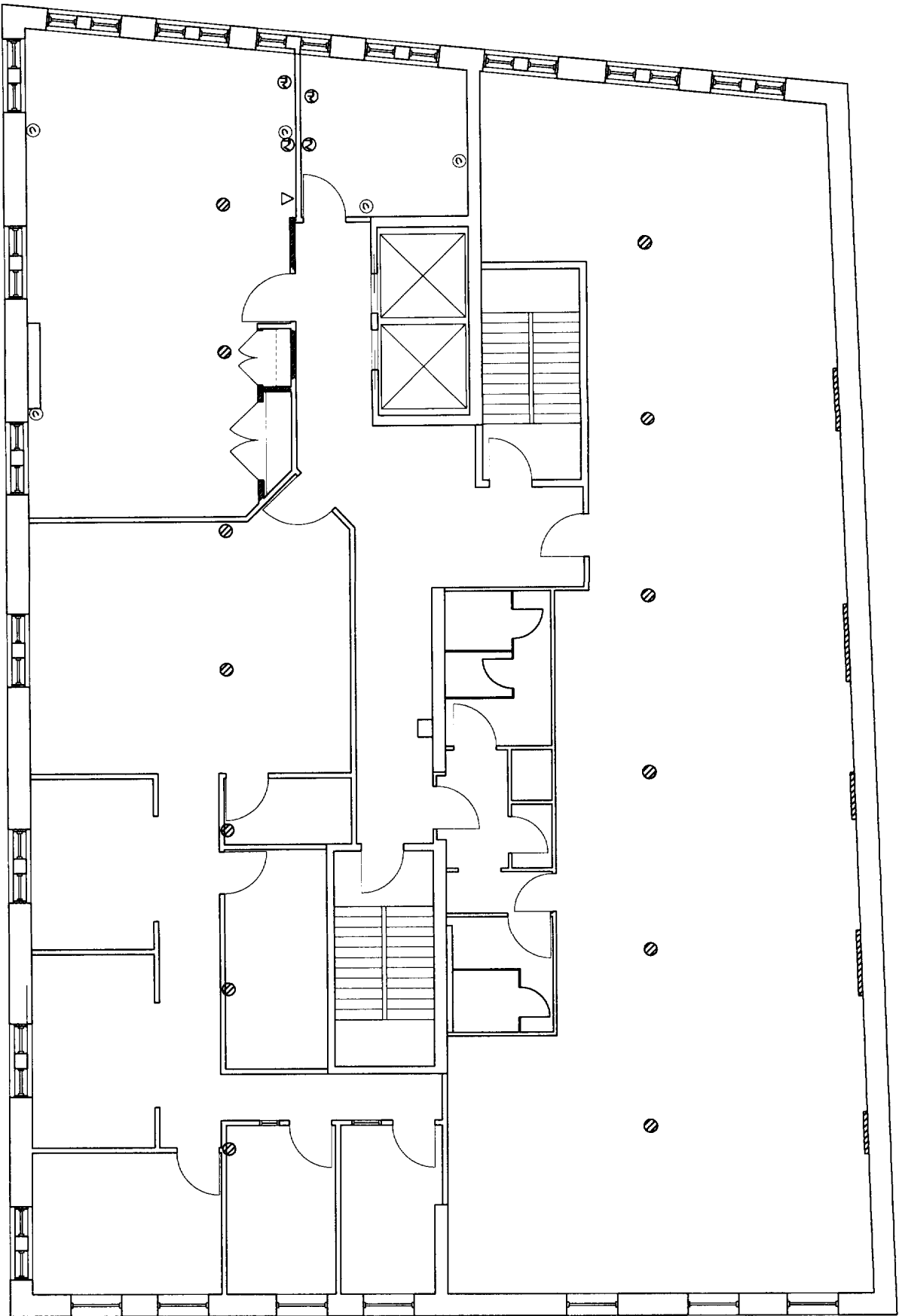
Normand
Associates
Architects
185 Park Row West
Portland, ME 04101
Phone (207) 725-4400
Fax (207) 725-1758
Email info@normand.com

ELECTRICAL LEGEND

- METER
- ELEC. METER
- FLUORESCENT FIXTURE
- LIGHTING FIXTURE - WALL OUTLET
- LIGHTING FIXTURE - CEILING OUTLET
- CEILING MOUNTED FAN
- CEILING MOUNTED FAN
- RECESSED FIXTURE
- SCANCE LIGHT FIXTURE
- UNDER COUNTER FLUORESCENTS - IN HOLES 2', 3' OR 4'
- TELEVISION JACK
- COMPUTER
- SPEAKER
- DUPLEX CONVENIENCE OUTLET 18" AFF. EXCEPT NOTED
- DUPLEX CONVENIENCE OUTLET 18" AFF. SWITCHED
- 220 OUTLET
- GROUND FAULT INTERRUPT OUTLET
- ABOVE FINISH FLOOR
- JUNCTION BOX - SIZED AS REQUIRED
- DOOR BELL
- SINGLE POLE SWITCH
- THREE WAY SWITCH
- FOUR WAY SWITCH
- DIMMER SWITCH
- HEAT/THROTOP
- BATHROOM EXHAUST FAN/LIGHT COMBO.
- AUDIOVISUAL ALARM
- EMERGENCY LIGHT
- MOTOR
- THERMOSTAT
- SMOKE DETECTOR
- HEAT DETECTOR
- ANALOG
- DATA
- CANTY
- VOICE
- TELECONFERENCE EQUIPMENT/TELEMEDICINE BOX
- KEYPAD ENTRY

GENERAL ELECTRICAL NOTES

1. ALL WORK SHALL CONFORM TO THE LATEST EDITION OF LOCAL STATE CODES, THE N.E.C. AND NFPA 70.
2. THIS CONTRACTOR SHALL BE RESPONSIBLE FOR BALANCING THE LOAD IN THE PANEL.
3. SWITCHES SHALL BE MOUNTED 4'-0" TO TOP OF PLATE. SWITCHES SHOWN IN SAME AREA SHALL BE GANGED UNLESS A COMMON PLATE. LOCATE SWITCHES AS CLOSE AS POSSIBLE TO EDGE OF DOOR FRAME ON L.O.K. SIDE.
4. MINIMUM WIRE SIZE SHALL BE #12 AWG COPPER ALL REFERENCE TO WIRE SIZE IS INTENDED AS COPPER CIRCUIT BREAKER SIZE (AS PER PANEL SCHEDULE) SHALL INDICATE WIRE SIZE OF ALL CONDUCTORS.
5. THE ENTIRE ELECTRICAL SYSTEM SHALL BE GROUNDED BY MEANS OF A SEPARATE GROUND CONDUCTOR CONDUIT SHALL NOT BE CONSIDERED A GROUND CONDUCTOR, BUT SHALL BE GROUNDED (SEE TABLE 250-95 N.E.C.)
6. THIS CONTRACTOR SHALL COORDINATE WITH OTHER TRADES WHERE EQUIPMENT AND/OR DEVICES ARE FINISHED BY OTHER TRADES AND WERE WHO, Y OR IN PART BY THIS CONTRACTOR SO AS TO ACHIEVE A COMPLETE AND OPERATING SYSTEM.
7. ALL HANGERS TO PANEL, NECESSARY OF 100 FEET SHALL BE AT LEAST #10 AWG COPPER
8. OUTLETS, JUNCTION BOXES OR PHONE BOXES MOUNTED BACK TO BACK SHALL BE PROHIBITED.
9. THIS CONTRACTOR SHALL VERIFY MOUNTING HEIGHTS FOR ALL OUTLETS, COORDINATE RECEPTS CAREFULLY FROM ARCHITECTURAL DRAWINGS, E. ELEVATIONS, SECTIONS, REFLECTED CEILINGS, ETC.
10. ALL HANG SCHEMATICS SHOWN ARE DIAGRAMMATICAL ONLY. REFER TO EQUIPMENT AND CONTROL MANUFACTURER'S SHOP DRAWINGS FOR EXACT WIRING.
11. THIS CONTRACTOR SHALL MAINTAIN THE INTEGRITY OF FIRE RATED WALLS BY SEALING ALL WIRING CONDUIT ETC. WHICH PASSES THROUGH SUCH WALLS WITH AN APPROVED FIRE RATED SEALANT
12. DIAGRAMS DO NOT NECESSARILY SHOW ALL ITEMS INCLUDED IN THE SYSTEM REFER TO FLOOR PLANS, ETC. FOR COMPLETE SYSTEM.
13. LOCATION OF ALL LIGHTING FIXTURES, RECEPTS, TELEPHONE OUTLETS, ETC. SHALL BE CONFIRMED AND VERIFIED FROM ARCHITECTURAL DRAWINGS, E. ELEVATIONS, SECTIONS, REFLECTED CEILINGS, ETC.
14. THE LIGHTING FIXTURE SCHEDULE SHALL NOT BE THE SOLE LIGHTING REFERENCE. REFER TO THE DRAWINGS TO VERIFY QUANTITIES, BALAST CONFIGURATIONS, AND DIMENSIONS OF FIXTURES PRIOR TO ORDERING.
15. PRIOR TO INSTALLING NEW WIRING DEVICES, COORDINATE WITH THE ARCHITECT. ALLOW DEVICE LOCATIONS TO BE RELOCATED 6 FEET IN ANY DIRECTION.
16. ALL CIRCUITS SHALL BE CLEARLY MARKED AND PREWRITTEN IN ELECTRICAL PANEL.



Third Floor Power Plan

NOTE:
ELECTRICAL CONTRACTOR SHALL PROVIDE THE ARCHITECT OF HIS PROPOSAL CIRCUIT LAYOUT FOR APPROVAL PRIOR TO INSTALLATION

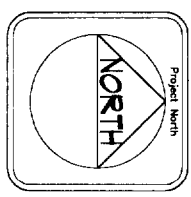


Wornand Associates Architects
185 Park Row North
Portland, Maine 04101
Tel: (207) 725-1729
Fax: (207) 725-1729
Email: info@wornand.com

Stamp

Communications Plan
Scale: 3/16" = 1'-0"
Date: August 10, 2005

Ingraham Inc.
50 Monument Square
Portland, Maine



Revisions

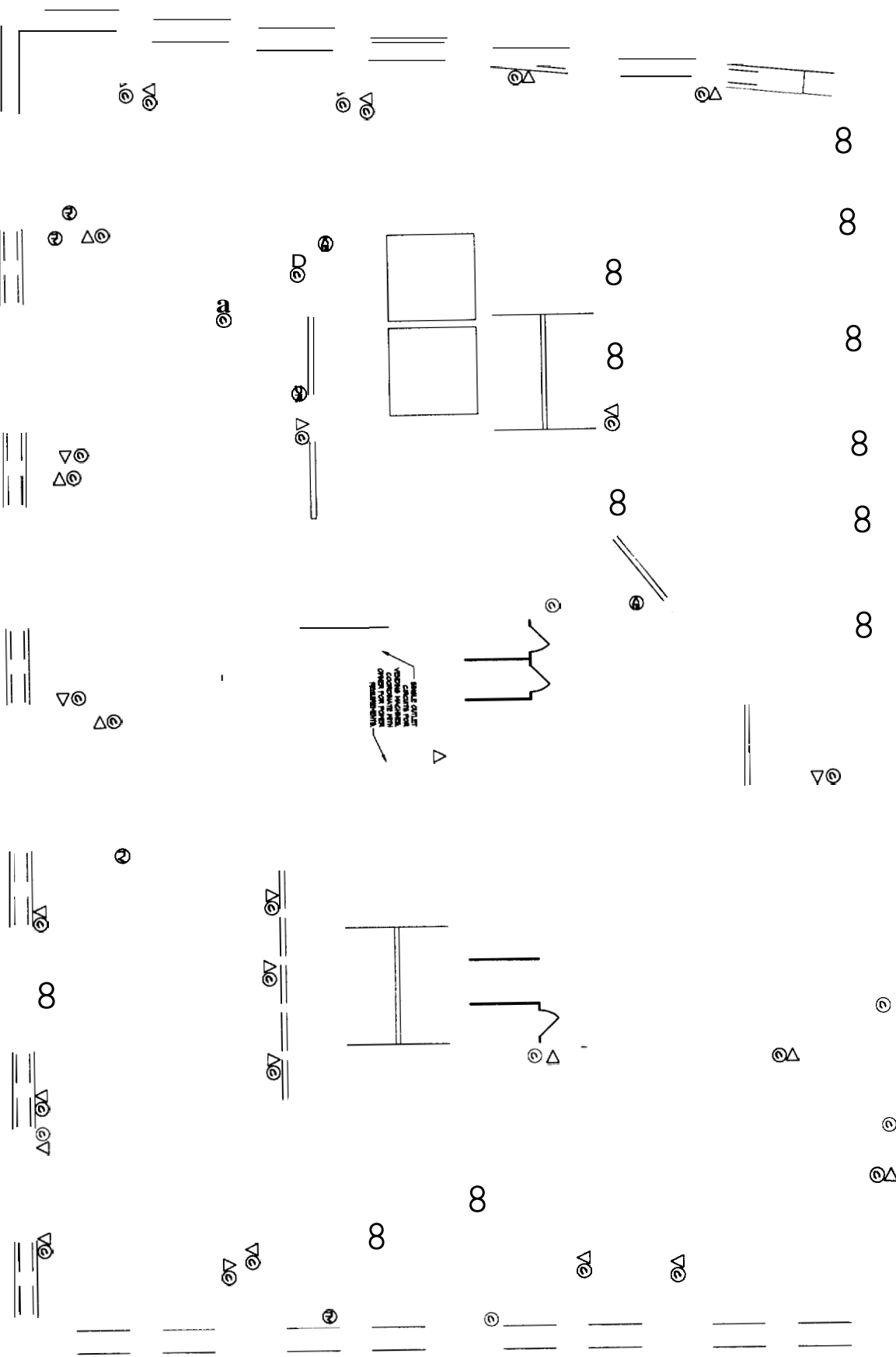
Sheet Number
E3.3

ELECTRICAL LEGEND

	- ELCT METER
	- FLUORESCENT FIXTURE
	- LIGHTING FIXTURE - WALL OUTLET
	- LIGHTING FIXTURE - CEILING OUTLET
	- CEILING LIGHT W/ FILL CHAIN
	- RECESSED FAN
	- RECESSED FIXTURE
	- RECESSED LIGHT FIXTURE
	- RECESSED LIGHT FIXTURE - IN HOODLES OF 2, 3 OR 4
	- UNDER COUNTER FLUORESCENTS
	- TELEVISION JACK
	- COMPUTER
	- SPEAKER
	- DUPLEX CONVENIENCE OUTLET 15 AMP EXCEPT AS NOTED
	- DUPLEX CONVENIENCE OUTLET 15 AMP SWITCHED
	- 220 OUTLET
	- GROUND FAULT INTERRUPT OUTLET
	- ABOVE FINISH FLOOR
	- JUNCTION BOX - SIZED AS REQUIRED
	- DOOR BELL
	- SINGLE POLE SWITCH
	- THREE WAY SWITCH
	- FOUR WAY SWITCH
	- DIMMER SWITCH
	- WEATHERPROOF
	- BATHROOM EXHAUST FAN/LIGHT COMBO
	- AUDIBLE ALARM
	- EMERGENCY LIGHT
	- MOTOR
	- THERMOSTAT
	- SMOKE DETECTOR
	- HEAT DETECTOR
	- ANALOG
	- DATA
	- CATV
	- VOICE
	- TELECOMMUNICATIONS EQUIPMENT/MEDICINE HOODS
	- KEYPAD ENTRY

GENERAL ELECTRICAL NOTES

1. ALL WORK SHALL CONFORM TO THE LATEST EDITION OF LOCAL STATE CODES, THE N.E.C., AND NFPA 101.
2. THIS CONTRACTOR SHALL BE RESPONSIBLE FOR BALANCING THE LOAD IN THE PANE.
3. SWITCHES SHALL BE MOUNTED 4'-0" TO TOP OF PANE. SWITCHES SHOWN IN SAME AREA SHALL BE GANGED UNDER A COMMON PLATE. LOCATE SWITCHES AS CLOSE AS POSSIBLE TO SOURCE OF LOAD FRAME ON LOAD SIDE.
4. MINIMUM WIRE SIZE SHALL BE #12 AWG COPPER A.C. REFERENCE TO WIRE SIZE IS INTENDED AS COPPER CIRCUIT BREAKER SIZE (AS PER PANE, SCHEDULE) SHALL. DICTATE WIRE SIZE OF ALL CONDUCTORS.
5. EACH FLOOR HAS ONE OR MORE SEPARATE 5. IT IS THE RESPONSIBILITY OF THE ELECTRICAL CONTRACTOR TO EVALUATE THE POTENTIAL OF RE-USE OR RE-ALIGNMENT. HIS EVALUATION AND REASONS PRO AND CON SHALL BE PROVIDED TO THE ARCHITECT AS A PART OF THE B.O. MAIN POWER DISTRIBUTION FROM THE BASEMENT.
6. THIS CONTRACTOR SHALL COORDINATE WITH OTHER TRADES WHERE EQUIPMENT AND/OR DEVICES ARE FURNISHED BY OTHER TRADES AND WIRE WHO,LY OR IN PART BY THIS CONTRACTOR SO AS TO ACHIEVE A COMPLETE AND OPERATING SYSTEM.
7. ALL WORKER'S TO PANE, IN EXCESS OF 100 FEET SHALL BE AT LEAST #10 AWG COPPER.
8. OUTLETS, JUNCTION BOXES OR PHONE BOXES MOUNTED BACK TO BACK SHALL BE PROHIBITED.
9. THIS CONTRACTOR SHALL VERIFY MOUNTING HEIGHTS FOR ALL OUTLETS, COORDINATE RECEPTACLES CAREFULLY PRIOR TO INSTALLATION, MOUNT RECEPTACLES AND OTHER OUTLETS TO CLEAR HEADINGS AND COMPATIBLY WITH ADA.
10. ALL HAV SCHEDULES SHOWN ARE DIMENSIONAL ONLY. REFER TO EQUIPMENT AND CONTROL MANUFACTURER'S SHOP DRAWINGS FOR EXACT WIRING. REFER TO THE PROJECT CEILING DRAWING A-7 FOR COORDINATION.
11. THIS CONTRACTOR SHALL MAINTAIN THE INTEGRITY OF ANY FIRE RATED WALLS BY SEALING ALL WIRING, CONDUIT, ETC. WHICH PASSES THROUGH SUCH WALLS WITH AN APPROVED FIRE RATED SEALANT.
12. DIAGRAMS DO NOT NECESSARILY SHOW ALL ITEMS INCLUDED IN THE SYSTEM. REFER TO FLOOR PLANS, ETC. FOR COMPLETE SYSTEM.
13. LOCATION OF ALL LIGHTING FIXTURES, RECEPTACLES, TELEPHONE OUTLETS, ETC. SHALL BE CONFIRMED AND VERIFIED FROM ARCHITECTURAL DRAWINGS, I.E. ELEVATIONS, SECTIONS, REFLECTED CEILING, ETC.
14. THE LIGHTING FIXTURE SCHEDULE SHALL NOT BE THE SOLE LIGHTING REFERENCE. REFER TO THE DRAWINGS TO VERIFY QUANTITIES, BALANCE CONFIGURATIONS, AND DIMENSIONS OF FIXTURES PRIOR TO ORDERING.
15. PRIOR TO INSTALLING NEW WIRING DEVICES, COORDINATE WITH THE ARCHITECT. ALL CON DEVICE LOCATIONS TO BE RELOCATED 6 FEET IN ANY DIRECTION.
16. ALL CIRCUITS SHALL BE CLEARLY MARKED AND PREWRITTEN IN ELECTRICAL PANE.



NOTE:
ELECTRICAL CONTRACTOR SHALL PROVIDE THE ARCHITECT OF HIS PROPOSAL CIRCUIT LAYOUT FOR APPROVAL PRIOR TO INSTALLATION

Fourth Floor Power Plan

Normand Associates Architects
 155 Park Row Rev.
 Post Office Box 470
 Portland, ME 04101
 Phone (207) 725-4460
 Fax (207) 725-1758
 Email: info@normand.com

Fourth Floor
 Communications Plan
 Scale: 3/16" = 1'-0"
 Date: August 10, 2005

Project: **New Offices for**
Ingraham Offices
50 Monument Square
Portland, Maine



Sheet Number
E3.4

