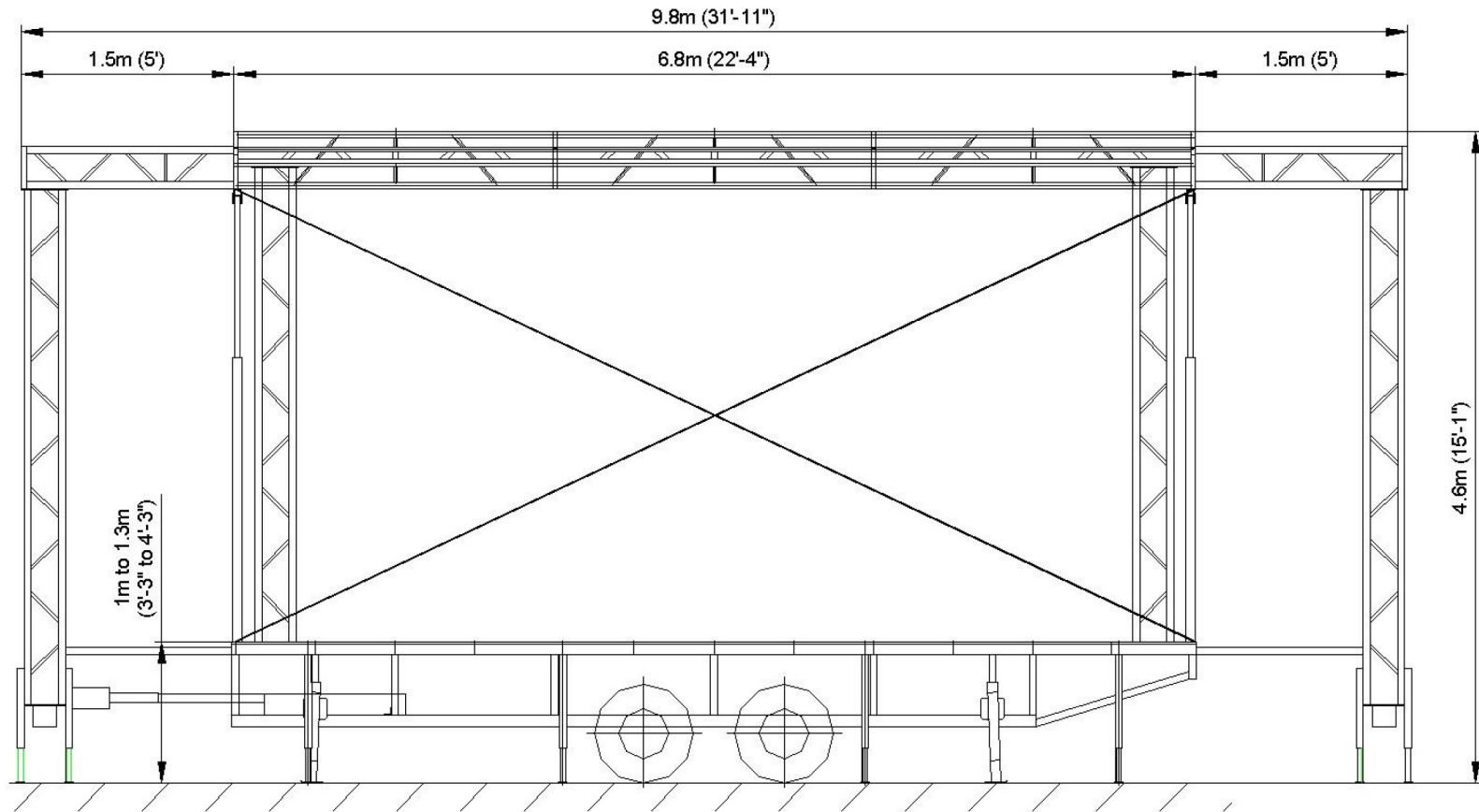




www.mobilestagemanufacturing.com
100 Eads St. West Babylon, NY 11704
(516) 882-5412
Info@MobileStageManufacturing.com

Stagemobil L



Front View

Stage specifications subject
To change without notice
Figures are within inch or
cm to actual size

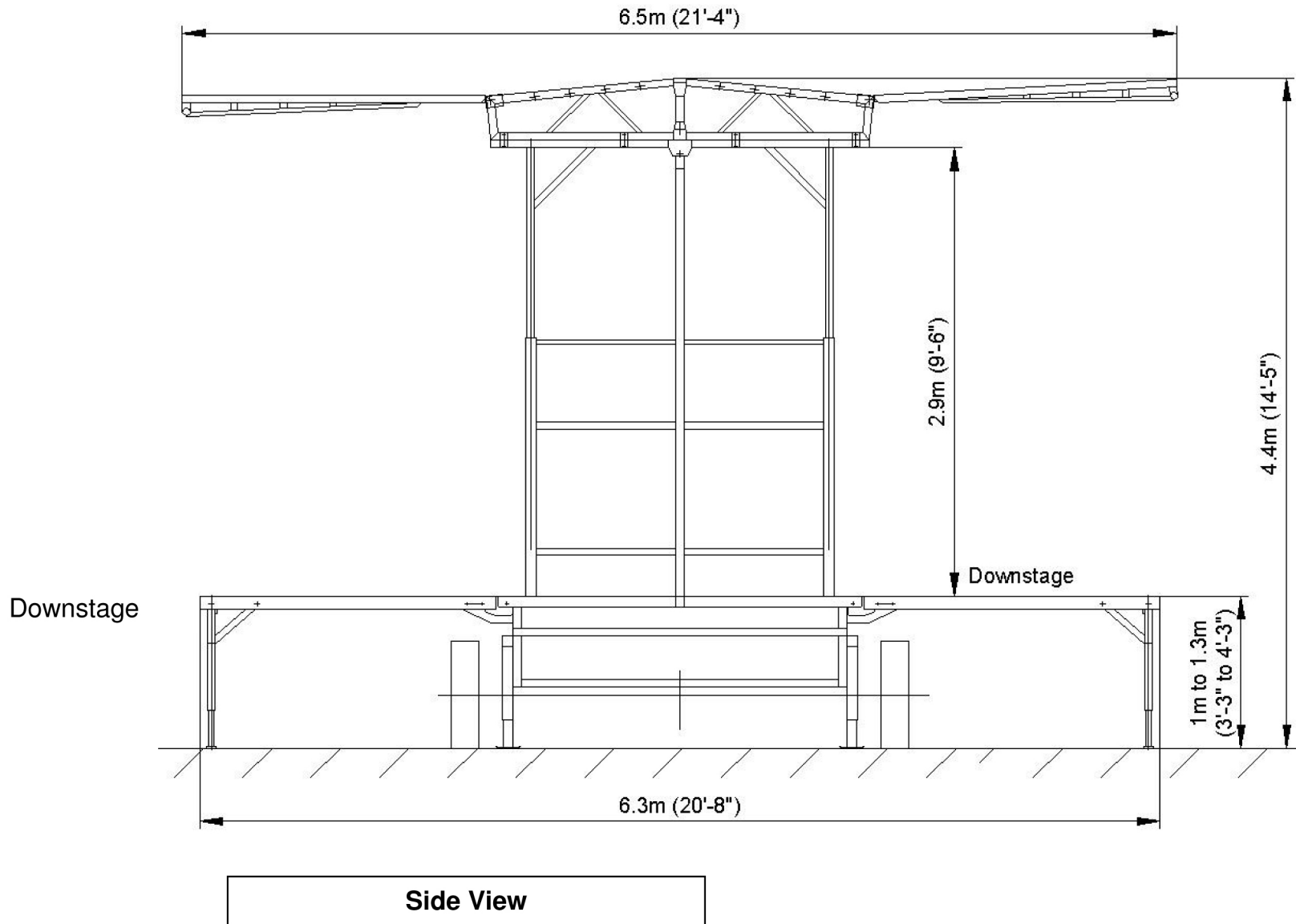
©2008 – Allrights reserved, Karl Eckart Fahrzeugbeu GmbH. Any and all forms of adaption or reproduction of this document including plans and drawings found herein, in whole or in part, are strictly forbidden without the written authorisation of Karl Eckart Fahrzeugbau GmbH.

Date: 2008-02-05
Revision 0



www.mobilestagemanufacturing.com
100 Eads St. West Babylon, NY 11704
(516) 882-5412
Info@MobileStageManufacturing.com

Stagemobil L



Stage specifications subject
To change without notice
Figures are within inch or
cm to actual size

©2008 – Allrights reserved, Karl Eckart Fahrzeugbeu GmbH. Any and all forms of adaption or reproduction of this document including plans and drawings found herein, in whole or in part, are strictly forbidden without the written authorisation of Karl Eckart Fahrzeugbau GmbH.

Date: 2008-02-05
Revision 0



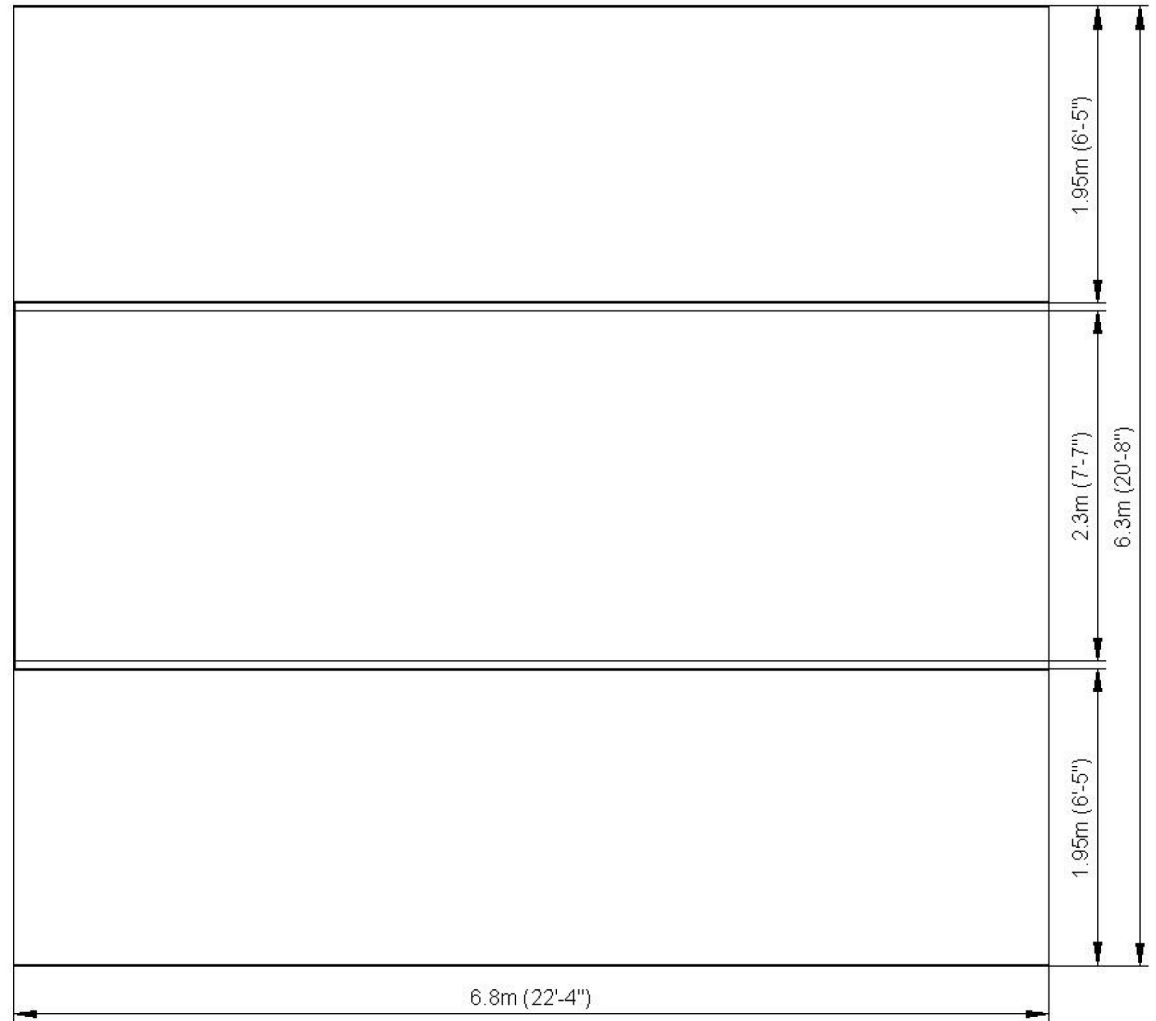
www.mobilestagemanufacturing.com

100 Eads St. West Babylon, NY 11704

(516) 882-5412

Info@MobileStageManufacturing.com

Stagemobil L



Downstage
Capacity: 100 lbs/ft² (5 kN/m²)

Floor View

Stage specifications subject
To change without notice
Figures are within inch or
cm to actual size

©2008 – Allrights reserved, Karl Eckart Fahrzeugbeu GmbH. Any and all forms of adaption or reproduction of this document including plans and drawings found herein, in whole or in part, are strictly forbidden without the written authorisation of Karl Eckart Fahrzeugbau GmbH.

Date: 2008-02-05
Revision 0



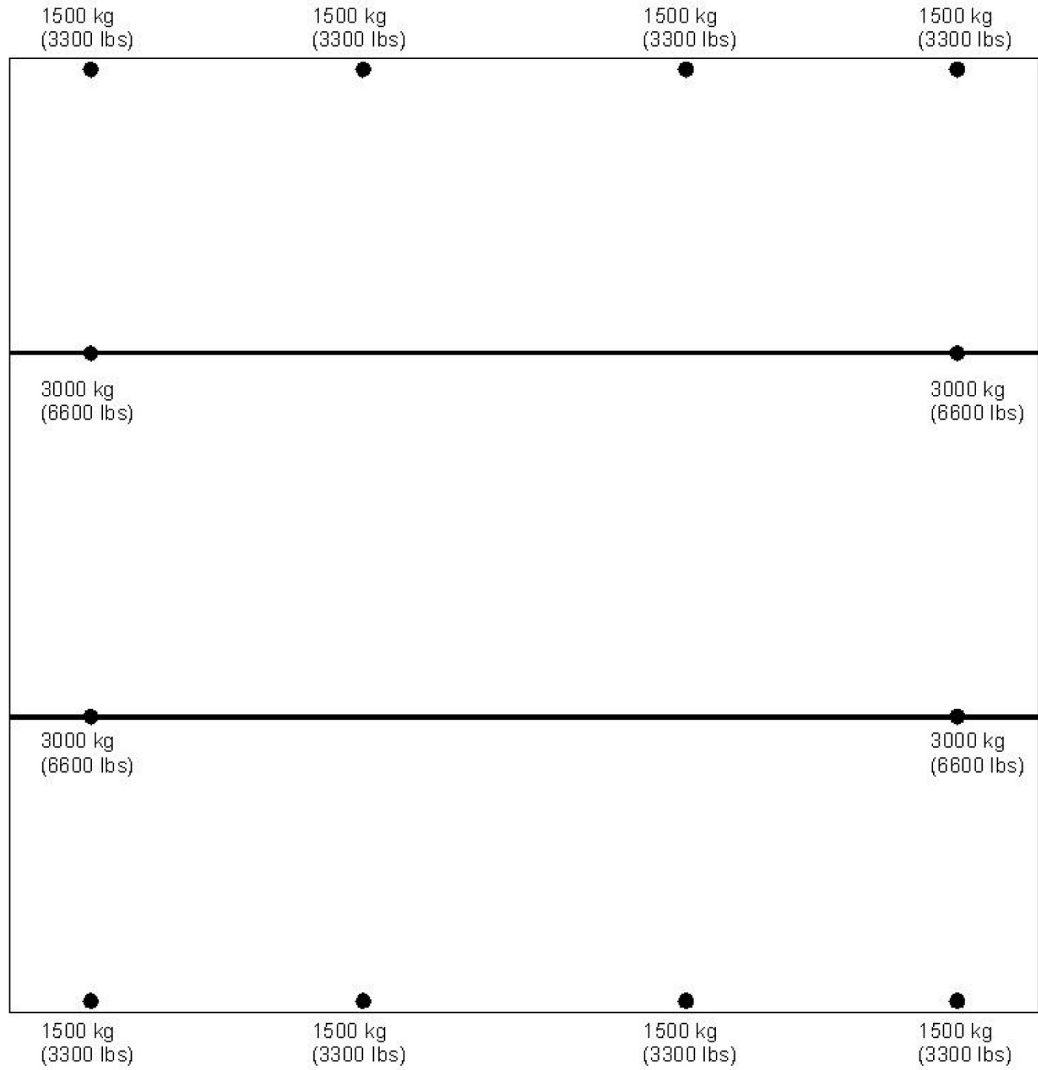
www.mobilestagemanufacturing.com

100 Eads St. West Babylon, NY 11704

(516) 882-5412

Info@MobileStageManufacturing.com

Stagemobil L



Downstage

Ground Support Capacity

● Floor stabilizers, extensions and leveling jacks.

*Nominal specifications subject to change with notice.

Stage specifications subject
To change without notice
Figures are within inch or
cm to actual size

©2008 – Allrights reserved, Karl Eckart Fahrzeugbeu GmbH. Any and all forms of adaption or reproduction of this document including plans and drawings found herein, in whole or in part, are strictly forbidden without the written authorisation of Karl Eckart Fahrzeugbau GmbH.

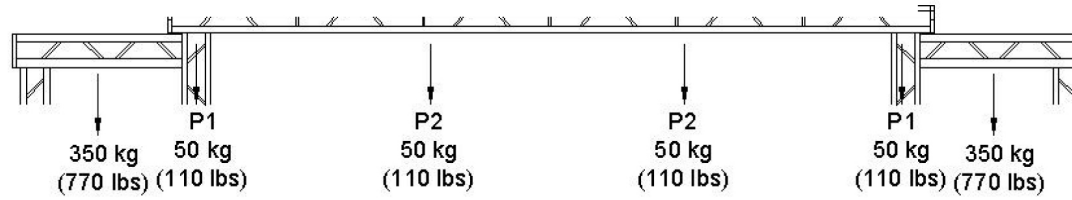
Date: 2008-02-05
Revision 0



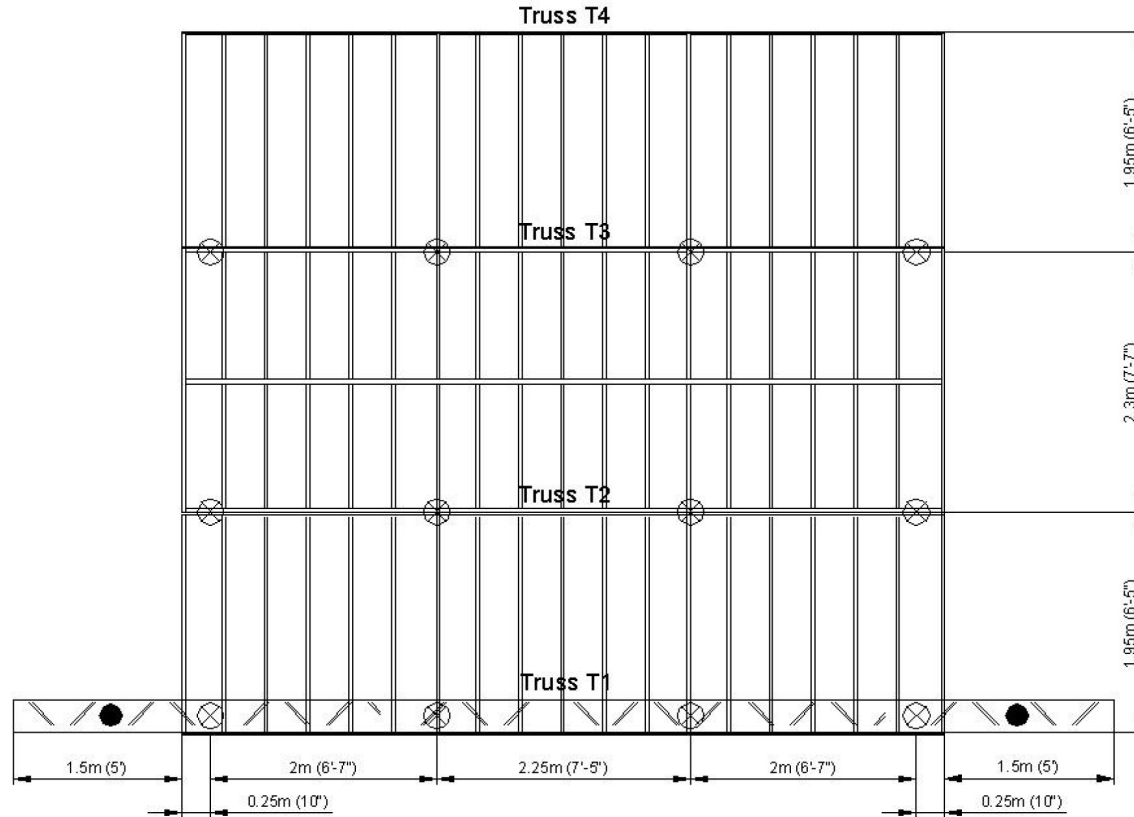
www.mobilestagemanufacturing.com
 100 Eads St. West Babylon, NY 11704
 (516) 882-5412
 Info@MobileStageManufacturing.com

Stagemobil L

LOAD BEARING TRUSSES



Total Maximum 200 kg (440 lbs)
 RIGGING PATTERNS
 T1-T4: USE P1 or P2



Downstage

Maximum load bearing capacity of all 4 bearing trusses 800 kg (1760 lbs)

- Rigging point maximum capacity: 350 kg (770 lbs)
- ⊗ Rigging point maximum capacity: 50 kg (110 lbs)

All loads should be evenly distributed.

Rigging Plan

Stage specifications subject
 To change without notice
 Figures are within inch or

©2008 – All rights reserved, Karl Eckart Fahrzeugbau GmbH. Any and all forms of adaption or reproduction of this document including plans and drawings found herein, in whole or in part, are strictly forbidden without the written authorisation of Karl Eckart Fahrzeugbau GmbH.

Date: 2008-02-05
 Revision 0