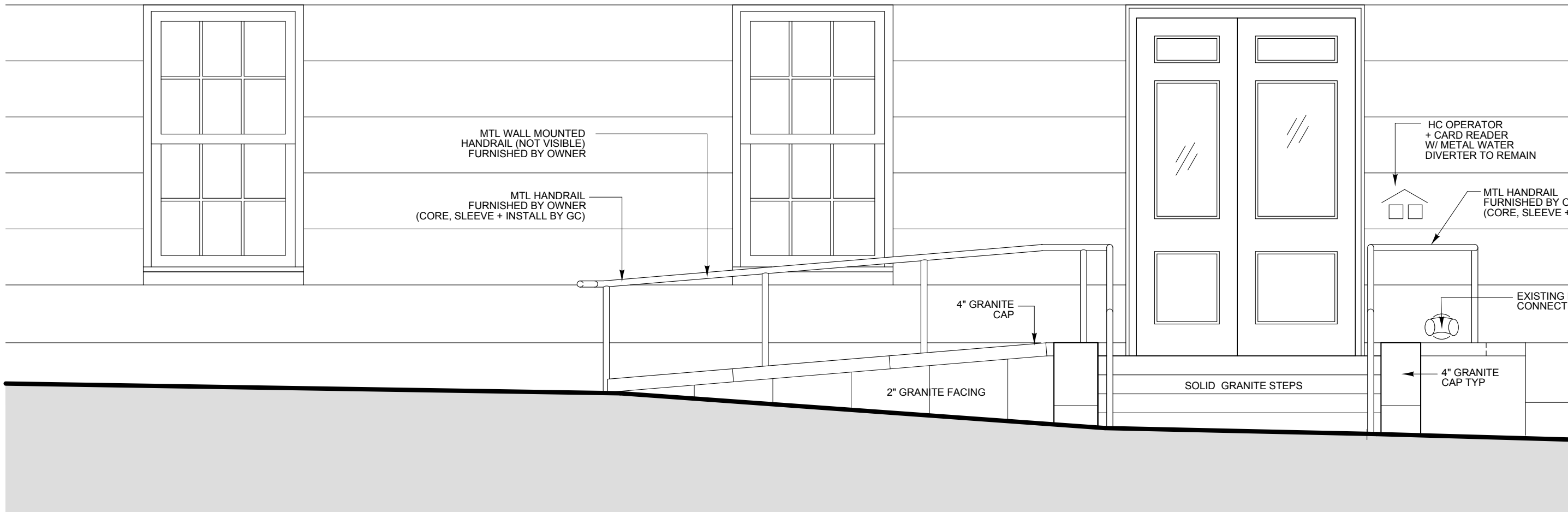
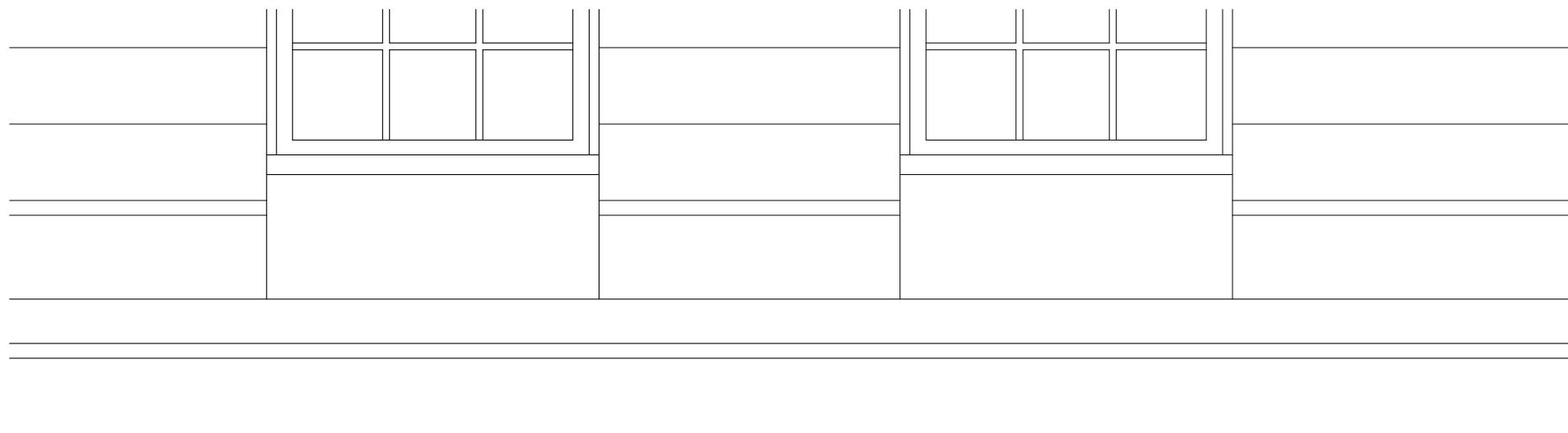


Side Elevation



Front Elevation

3/8"=1'-0"



Portland City Hall  
Myrtle Street Entrance Renovations  
Portland, Maine

Entry Elevation

WINTON SCOTT ARCHITECTS  
5 Milk Street  
Portland, Maine 04101

Scale: 3/8" = 1'-0"

A 3

July 26, 2016