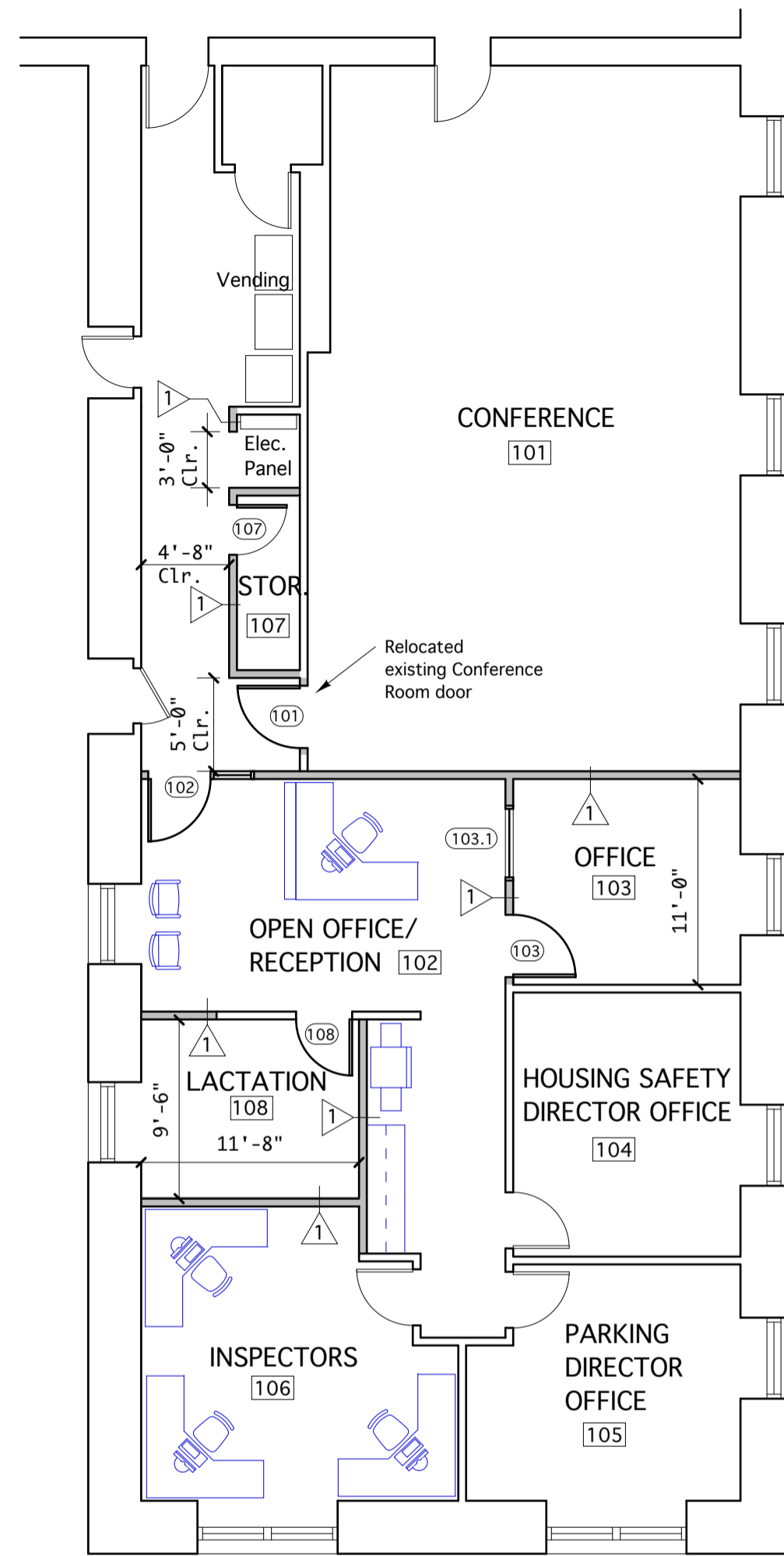


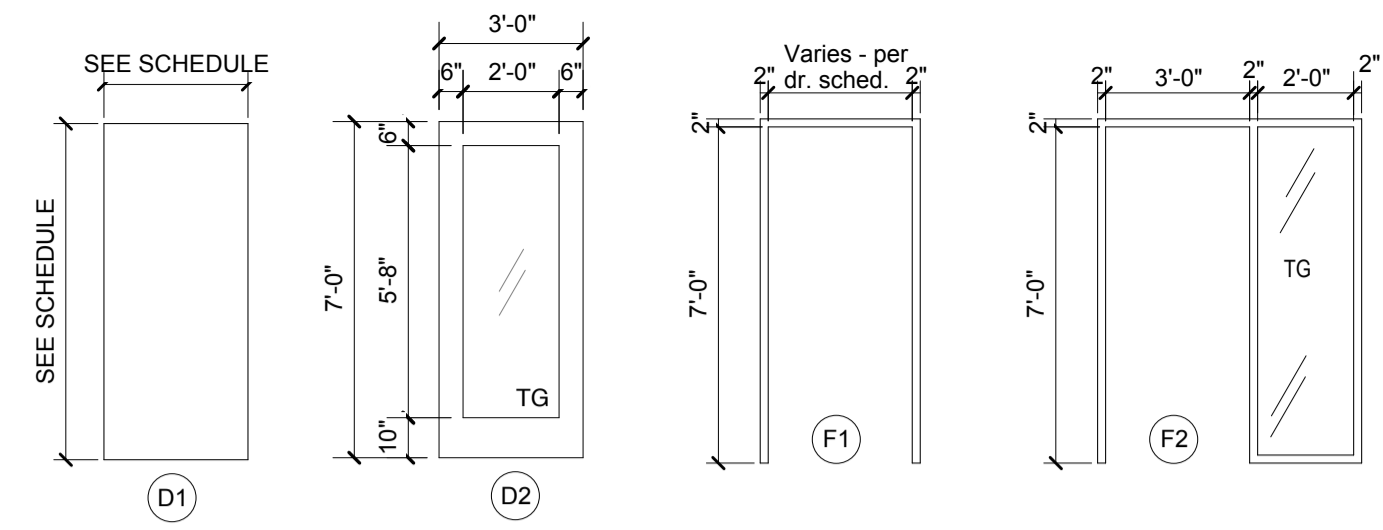
DEMOLITION PLAN

1/8" = 1'-0"



PROPOSED LAYOUT PLAN

1/8" = 1'-0"



DOOR & FRAME TYPES & TYPICAL FRAME DETAIL

DOOR & FRAME SCHEDULE														
General			Door			Frame			Details					
Door No.	Size (W x H)	Thickness	Material	Finish	Type	Material	Finish	Type	Head	Jamb	Threshold	Hardware	Label	Remarks
101	EXIST'G	EXIST'G	EXIST'G	EXIST'G	D1	EXIST'G	EXIST'G	F1	H1	J1	--	EXIST'G	--	
102	3'-0" X 7'-0"	1 3/4"	HM	PNTD	D2	HM	PNTD	F2	H1	J1	--	HDWR 1	--	
103	3'-0" X 7'-0"	1 3/4"	HM	PNTD	D1	HM	PNTD	F1	H1	J1	--	HDWR 1	--	
103.1	4'-0" X 4'-0"		HM	PNTD	F3	HM	PNTD	F3	*****HM FIXED FRAME GLASS PANEL*****					
107	2'-8" X 7'-0"	1 3/4"	HM	PNTD	D1	HM	PNTD	F1	H1	J1	--	HDWR 2	--	
108	3'-0" X 7'-0"	1 3/4"	HM	PNTD	D1	HM	PNTD	F1	H1	J1	--	HDWR 1	--	

Hardware Sets:

HDWR 1: Hinges, Silencers, Stop, Commercial heavy duty lockset w/ ADA lever handle-Office Function.

HDWR 2: Hinges, Silencers, Stop, Commercial heavy duty lockset w/ ADA lever handle-Storage Function.

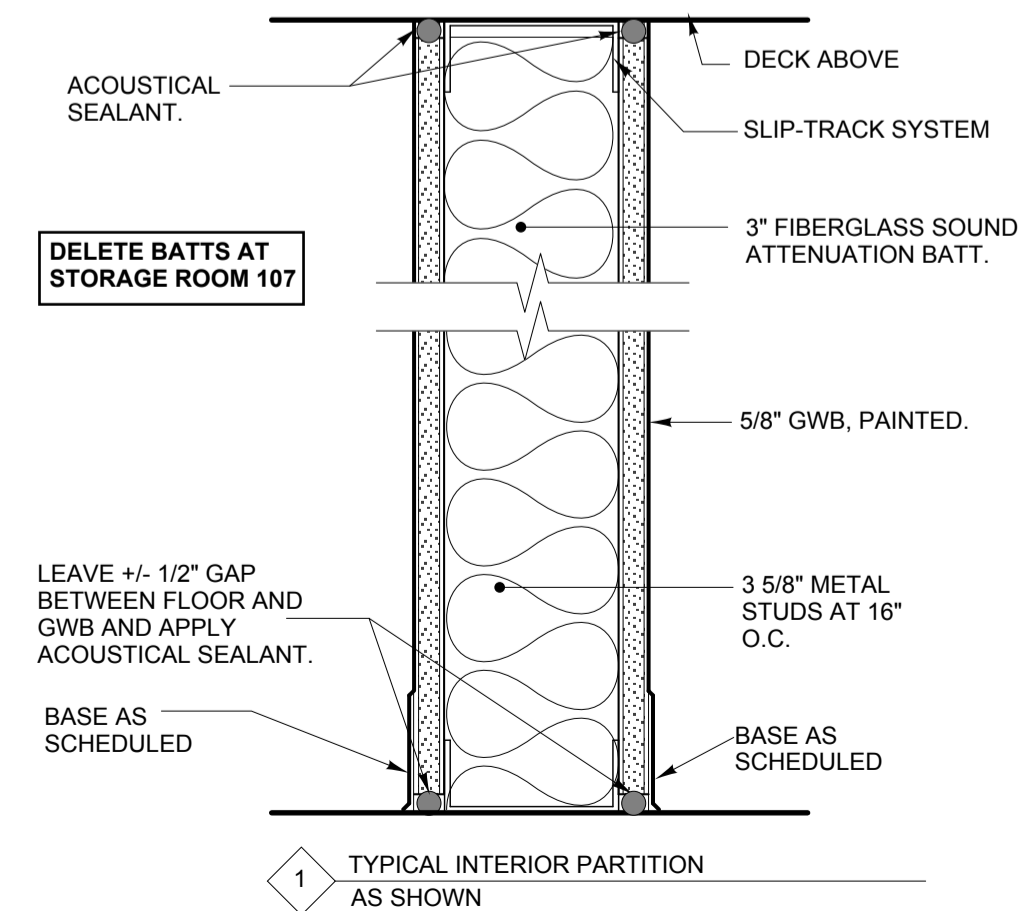
HDWR 3: Hinges, Silencers, Stop, Commercial heavy duty lockset w/ ADA lever handle-Privacy Function.

NOTES:

1. DOORS TO BE SOLID CORE WITH FACTORY CLEAR FINISH BIRCH FACE VENEER

LIFE SAFETY CODE NOTES:

1. This project entails re-organizing of the existing layout to improve functionality and efficiency only. There is no change of use and the proposed layout does not deviate significantly from the existing layout.
2. Egress paths are not changed so it is assumed that a life safety plan is not required to evaluate exiting.
3. Total Work Area = 203 S.F.
4. No rated partitions, doors, or frames are required.



1 TYPICAL INTERIOR PARTITION AS SHOWN



REVISIONS

REVISED October 16, 2015
REVISED October 15, 2015
REVISED September 21, 2015
September 3, 2015

Existing and Proposed
Layout Plans

Scale: As Noted