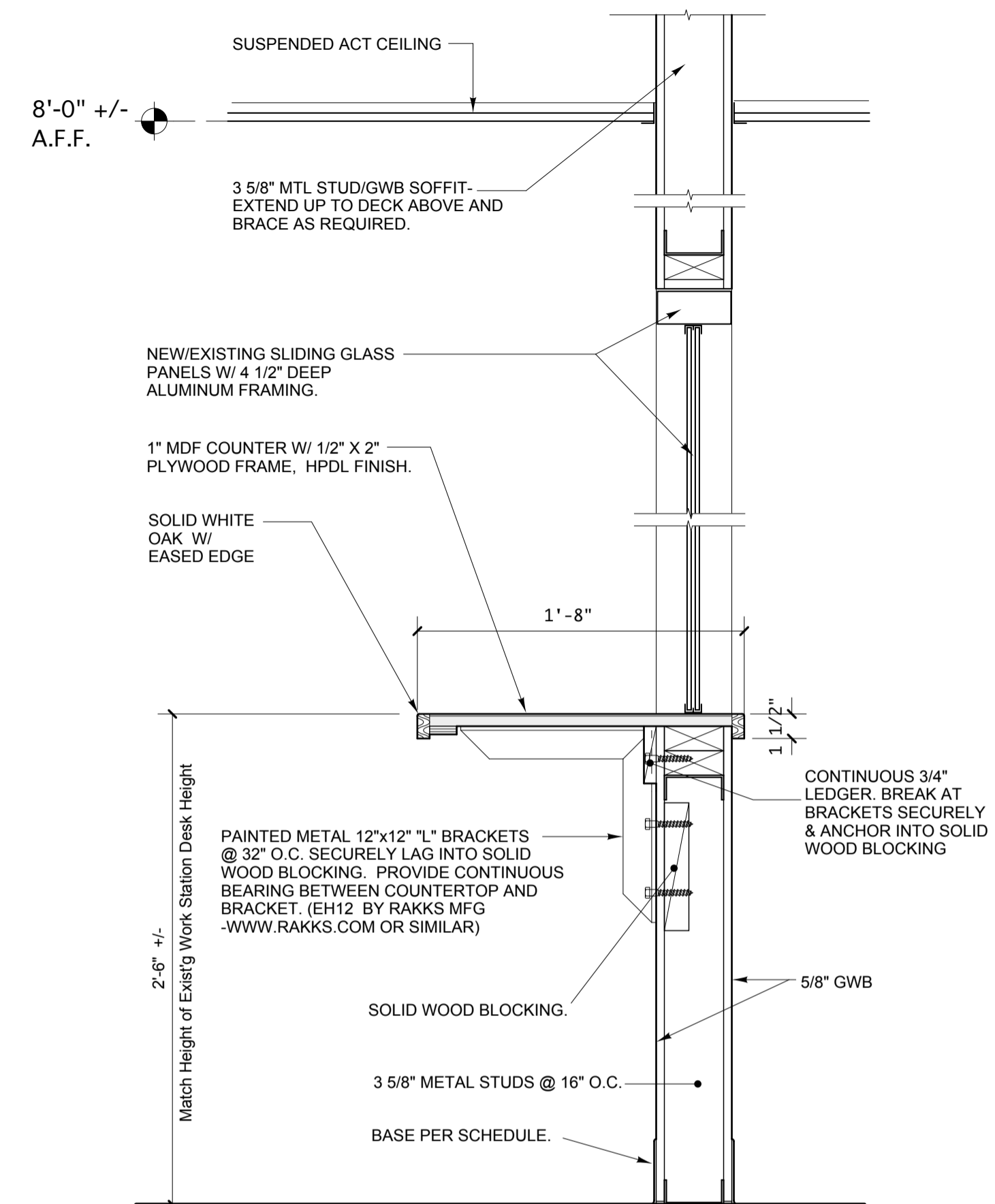


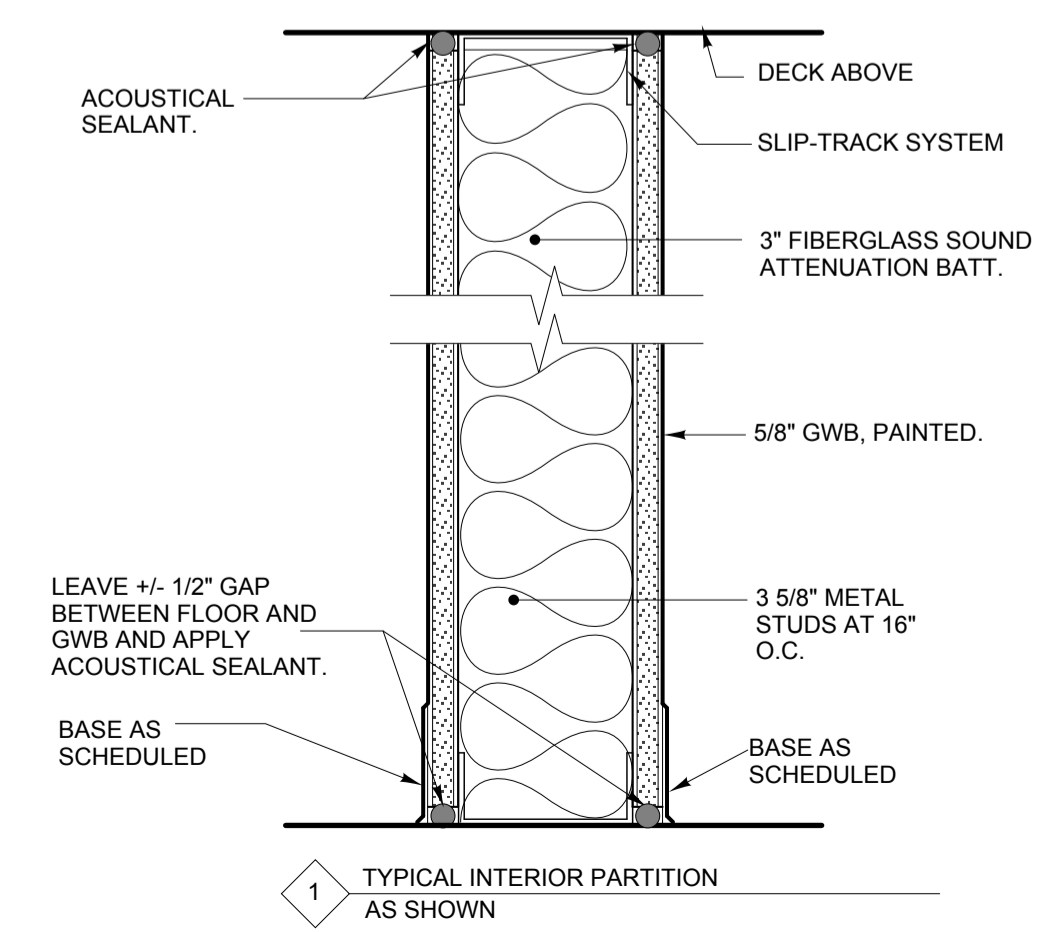
A SECTION DETAIL AT RECEPTION 101
SCALE: 1 1/2" = 1'-0"

SAME AS SECTION A EXCEPT NO UPPER CABINETS AND BASE CABINET DEPTH TO BE 24" INSTEAD OF 20"

C SECTION DETAIL AT WORK AREA 106
SCALE: 1 1/2" = 1'-0"



B SECTION DETAIL AT RECEPTION 101
SCALE: 1 1/2" = 1'-0"



1 TYPICAL INTERIOR PARTITION AS SHOWN



REVISIONS

PERMIT DRAWINGS
Date, 2014

Millwork Details

Scale: As Noted