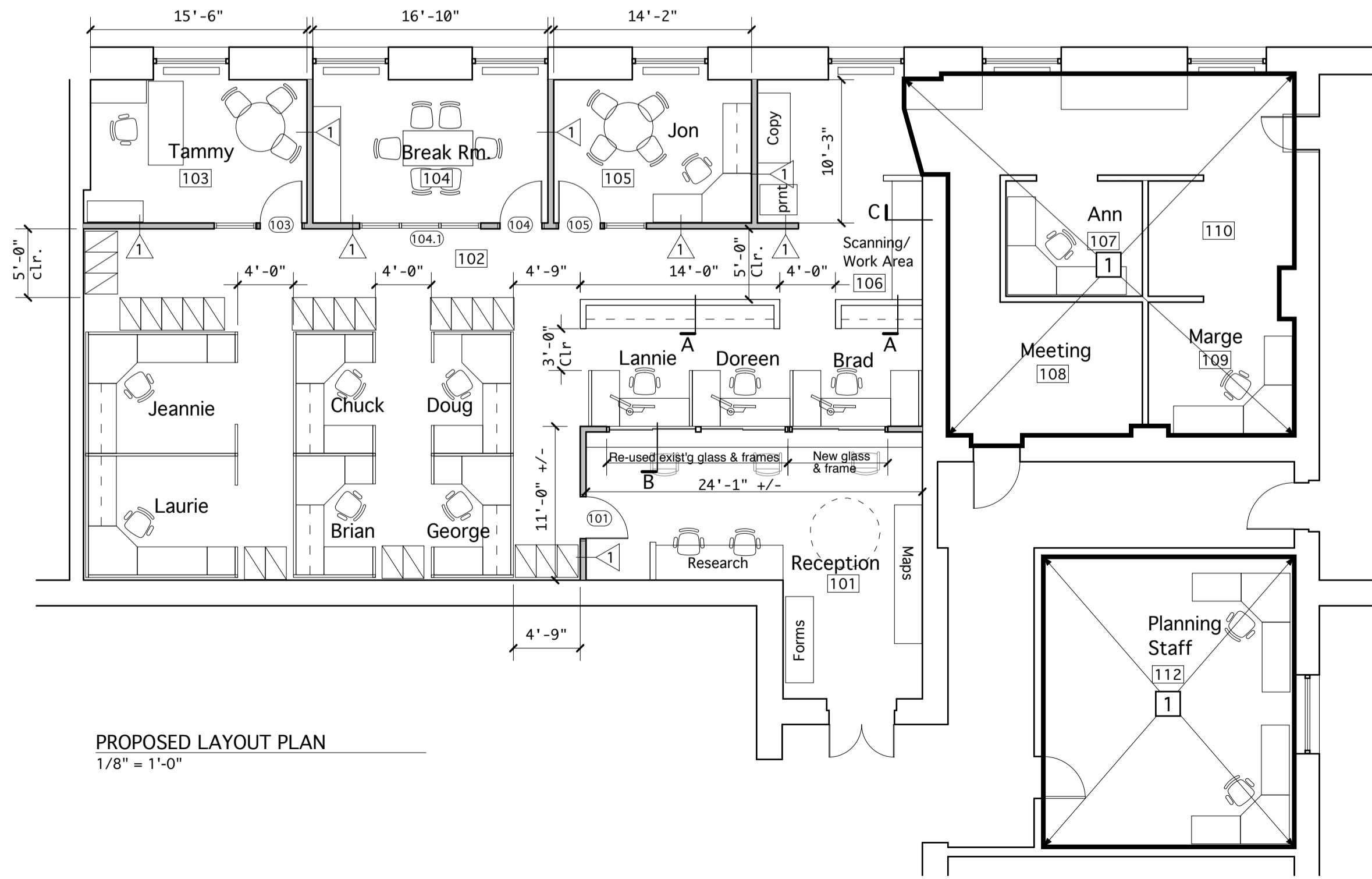


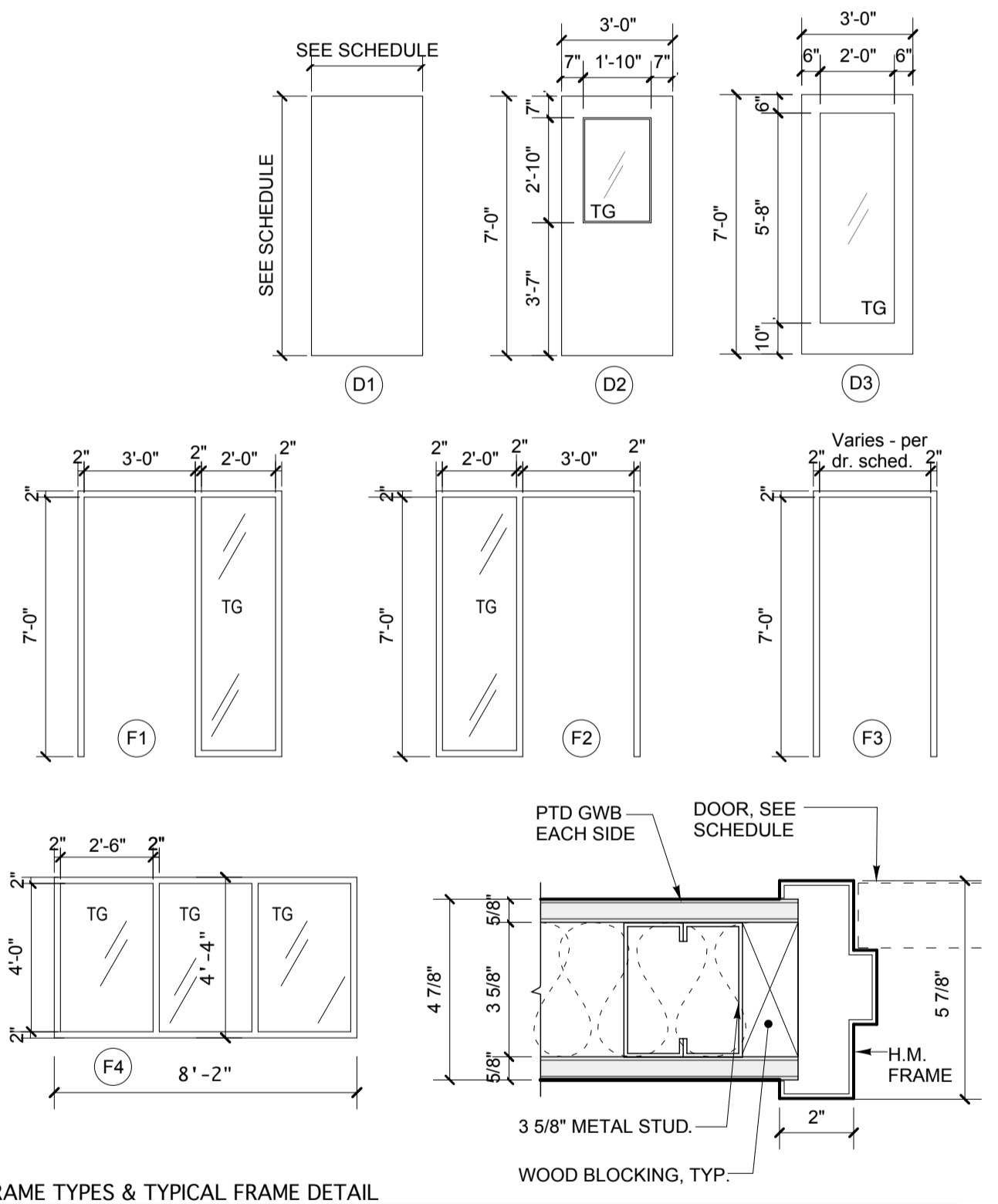
DEMOLITION PLAN  
1/8" = 1'-0"



PROPOSED LAYOUT PLAN  
1/8" = 1'-0"

DEMOLITION NOTES

- 1 EXISTING AREA TO REMAIN AS IS. - NO WORK SCHEDULED
- 2 EXISTING COUNTERTOP TO BE RELOCATED AND RECONFIGURED
- 3 CAREFULLY REMOVE EXIST'G DOOR + FRAME AND SAVE FOR REINSTALLATION
- 4 EXISTING COUNTERTOP AND BASE CABINETS TO BE REMOVED. SALVAGE ALUMINUM FRAMED GLAZING FOR RE-USE
- 5 EXISTING MILLWORK TO REMAIN
- 6 EXISTING WORK STATIONS, EQUIPMENT AND FURNITURE TO BE REMOVED AND REINSTALLED IN NEW CONFIGURATION.
- 7 EXISTING CABINET TO BE REMOVED.



FRAME TYPES & TYPICAL FRAME DETAIL

DOOR & FRAME SCHEDULE

Door No.	Size (W x H)	Thickness	Door			Frame			Details			Hardware	Label	Remarks
			Material	Finish	Type	Material	Finish	Type	Head	Jamb	Threshold			
101	3'-0" x 7'-0"	1 3/4"	HM	PNTD	D2	HM	PNTD	F3	H1	J1	--	--	--	--
103	3'-0" x 7'-0"	1 3/4"	HM	PNTD	D3	HM	PNTD	F2	H1	J1	--	HDWR 1	--	--
104	3'-0" x 4'-0"	1 3/4"	HM	PNTD	D3	HM	PNTD	F3	H1 Sim.	J1 Sim.	--	HDWR 1	--	--
104.1	3'-0" x 4'-0"	--	--	--	--	HM	PNTD	F4	H1 Sim.	J1 Sim.	--	--	--	*FIXED GLASS PANEL
105	PR 3'-0" x 7'-0"	1 3/4"	HM	PNTD	D3	HM	PNTD	F1	H1	J1	--	HDWR 1	--	--

Hardware Sets:

HDWR 1: Hinges, Silencers, Stop, Commercial heavy duty lockset w/ ADA lever handle-Office Function, Weatherstripping.

HDWR 2: Existing Hardware with electronic security features to be re-used if Possible

City of Portland  
Inspections Dept.  
Fit-Up Alterations

389 Congress Street  
Portland, Maine

REVISIONS

PERMIT DRAWINGS  
Date, 2014

Layout + Demolition  
Plans

Scale: As Noted