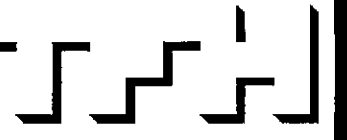


© 2005 TFH ARCHITECTS

CHESTNUT STREET LOFTS
URBAN REVITALIZATION PROJECT
BY CHESTNUT STREET LLC.
PORTLAND, MAINE



TFH ARCHITECTS
100 COMMERCIAL STREET
PORTLAND MAINE 04101
TELEPHONE 207 775 6141
ARCHITECTURE PLANNING

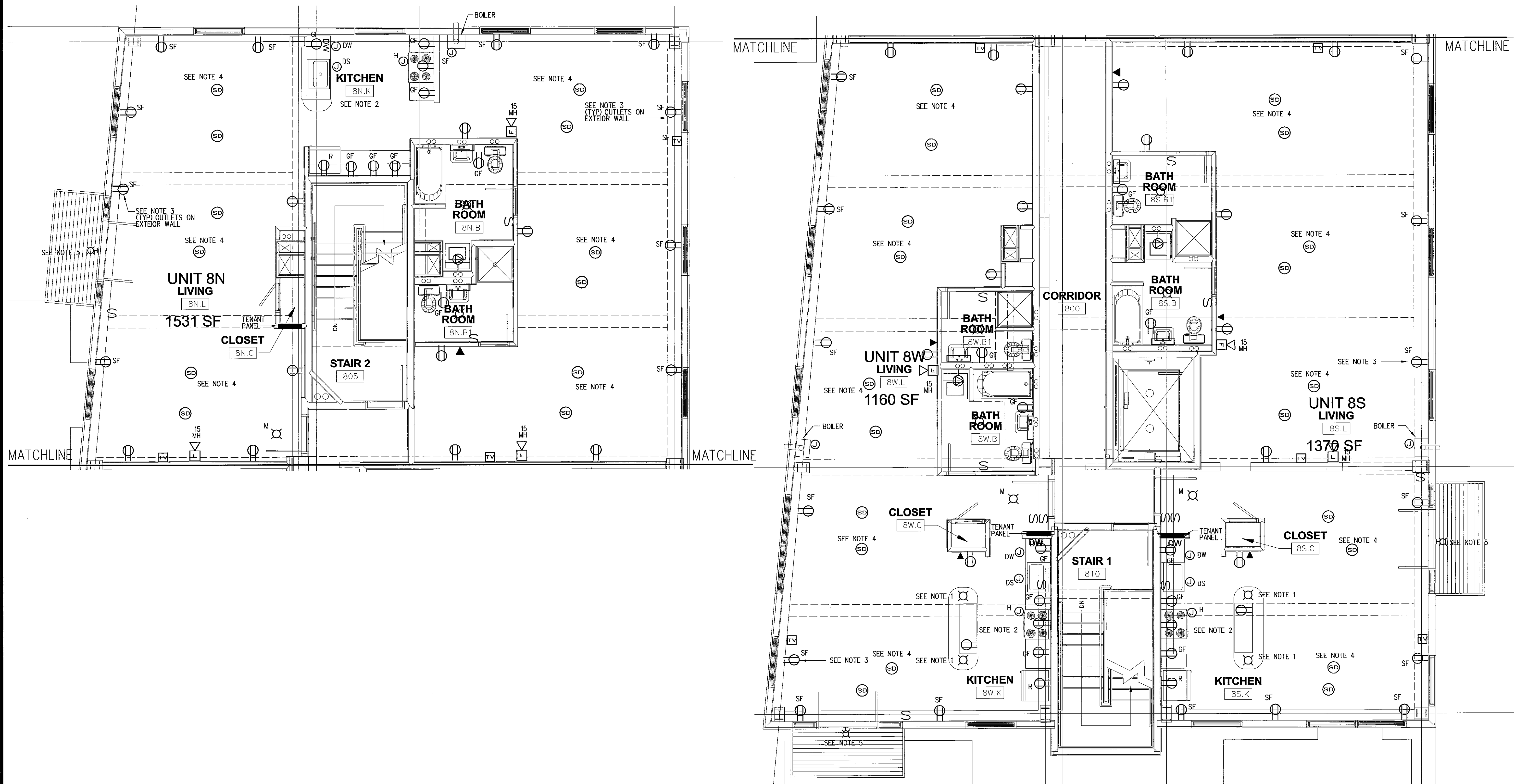
CONSULTANTS:
CIVIL:
Land Use Consultants
965 Riverside Street
Portland, ME 04103
207-479-5313
STRUCTURAL:
Structural Design Consulting
22 Colburn Drive
Old Orchard Beach, ME 04064
207-934-8528
MECHANICAL:
Whitney Engineering
10 Dunbar Street
Portland, ME 04101
207-674-7460
ELECTRICAL:
Bennett Engineering
7 Bennett Road
Frogsport, ME 04032
207-655-9475

REVISIONS:
JAN 2, 2006 BID SET
FEB 9, 2006 PERMIT SET
FEB 23, 2006
CONSTRUCTION
DOCUMENTS

DATE:
PROJECT No. 0422
DRAWN BY: WSBJR SPD
CHECKED BY: CWA WSBJR
SCALE: AS NOTED

SHEET TITLE:
8th FLOOR
ENLARGED UNIT
ELEC. PLANS

E2.3



8th FLOOR - ENLARGED UNIT ELECTRICAL PLANS
SCALE: 1/4"=1'-0"

- NOTES:**
- 1. ROUGH IN FOR PENDANT MOUNTED COUNTER LIGHT CARRY \$50 ALLOWANCE FIXTURE SELECTED BY TENANT
 - 2. CARRY THREE (3) TYPE N "HOCKEY PUCK" LOW VOLTAGE UNDER CABINET LIGHTS AND ASSOCIATED TRANSFORMER AND SWITCH
 - 3. ALL OUTLETS ON EXTERIOR WALLS SHALL BE SURFACE MOUNTED WITH METALLIC JUNCTION BOXES AND CONDUIT.
 - 4. SINGLE STATION SMOKE DETECTORS SHALL BE WIRED FOR COMMON AUDIBLE/VISUAL ALARMS WITHIN THE RESPECTIVE UNIT. INTERWIRING (3*14) NOT SHOWN ON DWGS.
 - 5. CONTRACTOR TO CARRY \$300 ALLOWANCE FOR EXTERIOR LIGHT AT DECK