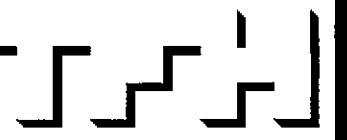


© 2005 TFH ARCHITECTS

**CHESTNUT STREET LOFTS**  
URBAN REVITALIZATION PROJECT  
BY CHESTNUT STREET LLC.  
PORTLAND, MAINE



TFH ARCHITECTS  
100 COMMERCIAL STREET  
PORTLAND MAINE 04101  
TELEPHONE 207 775 6141  
ARCHITECTURE PLANNING

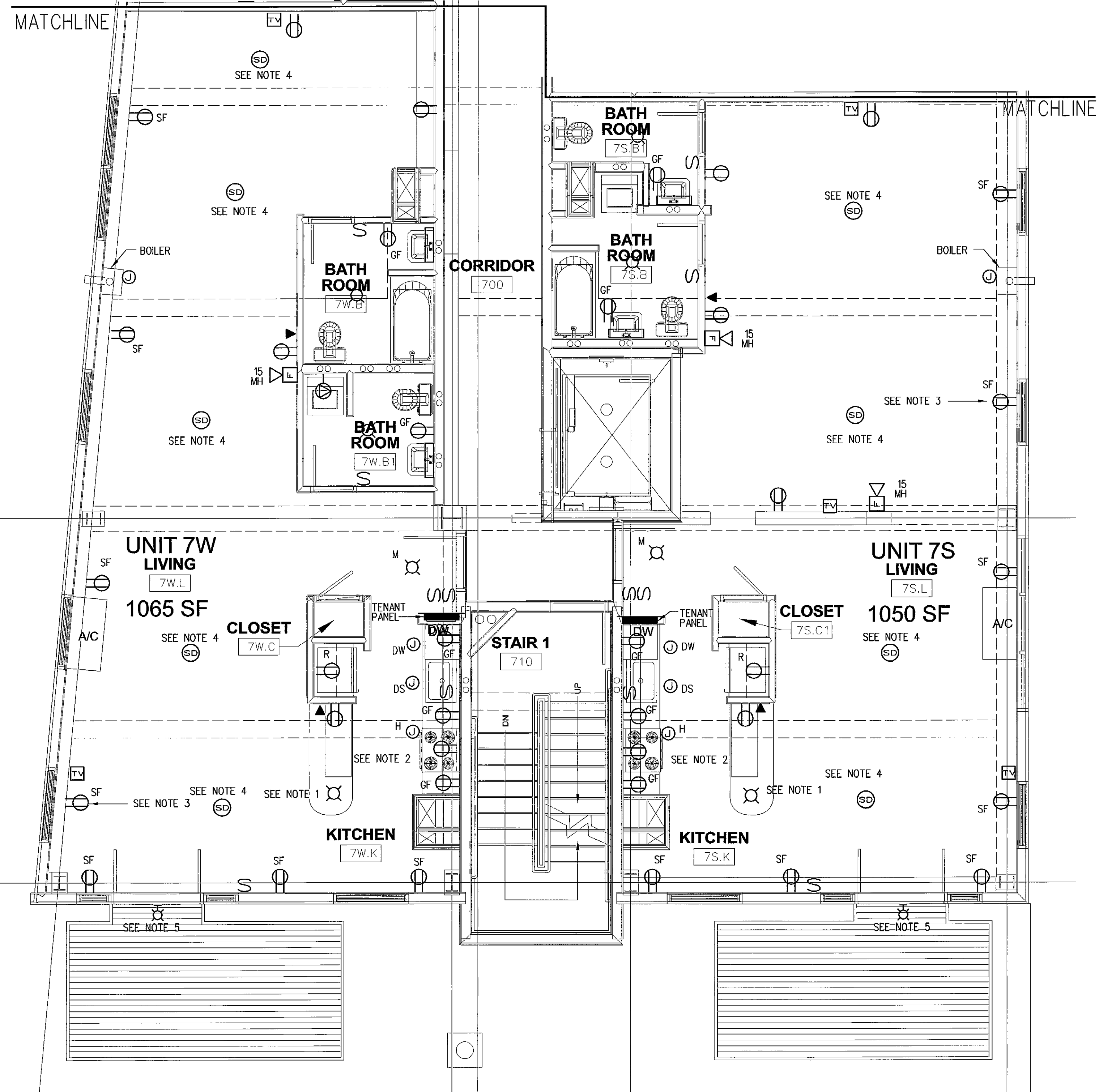
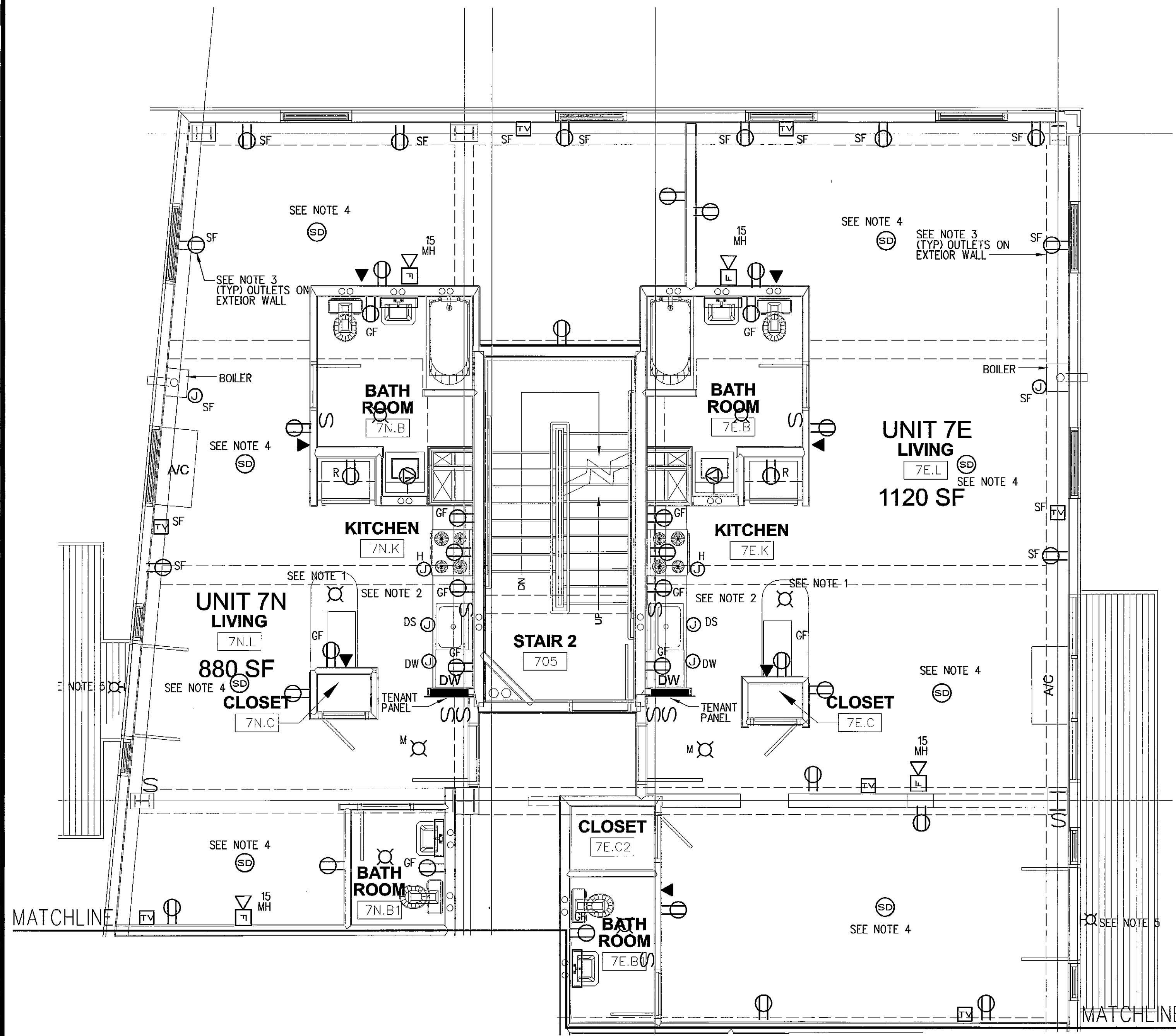
CONSULTANTS:  
**ENVIRONMENTAL:**  
Land Use Consultants  
468 Riverside Street  
Portland, ME 04103  
207-678-5313  
**STRUCTURAL:**  
Structural Design Consulting  
22 Oakmont Drive  
23 Chestnut Street, ME 04054  
207-834-8038  
**MECHANICAL:**  
Whitney Engineering  
10 Danforth Street  
Portland, ME 04101  
207-874-7449  
**ELECTRICAL:**  
Bennett Engineering  
7 Bennett Road  
Fryeburg, ME 04032  
207-855-9475

REVISIONS:  
JAN 2, 2006 BID SET  
FEB 9, 2006 PERMIT SET  
FEB 23, 2006  
CONSTRUCTION  
DOCUMENTS

DATE:  
PROJECT No. 0422  
DRAWN BY: WSB, JR SPD  
CHECKED BY: CWA WSB, JR

SCALE: AS NOTED  
SHEET TITLE:  
5th,  
7th FLOOR  
ENLARGED UNIT  
ELEC. PLANS

E2.2



7th FLOOR - ENLARGED UNIT ELECTRICAL PLANS  
SCALE: 1/4"=1'-0"

- NOTES:
1. ROUGH IN FOR PENDANT MOUNTED COUNTER LIGHT CARRY \$50 ALLOWANCE FIXTURE SELECTED BY TENANT
  2. CARRY THREE (3) TYPE N "HOCKEY PUCK" LOW VOLTAGE UNDER CABINET LIGHTS AND ASSOCIATED TRANSFORMER AND SWITCH
  3. ALL OUTLETS ON EXTERIOR WALLS SHALL BE SURFACE MOUNTED WITH METALLIC JUNCTION BOXES AND CONDUIT.
  4. SINGLE STATION SMOKE DETECTORS SHALL BE WIRED FOR COMMON AUDIBLE/VISUAL ALARMS WITHIN THE RESPECTIVE UNIT. INTERWIRING (3\*14) NOT SHOWN ON DWGS.
  5. CONTRACTOR TO CARRY \$300 ALLOWANCE FOR EXTERIOR LIGHT AT DECK