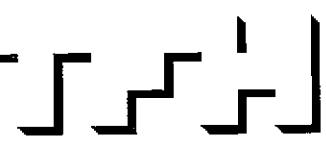


© 2005 TFH ARCHITECTS

CHESTNUT STREET LOFTS
 URBAN REVITALIZATION PROJECT
 BY CHESTNUT STREET LLC.
 PORTLAND, MAINE



TFH ARCHITECTS
 100 COMMERCIAL STREET
 PORTLAND MAINE 04101
 TELEPHONE 207 775 6141
 ARCHITECTURE PLANNING

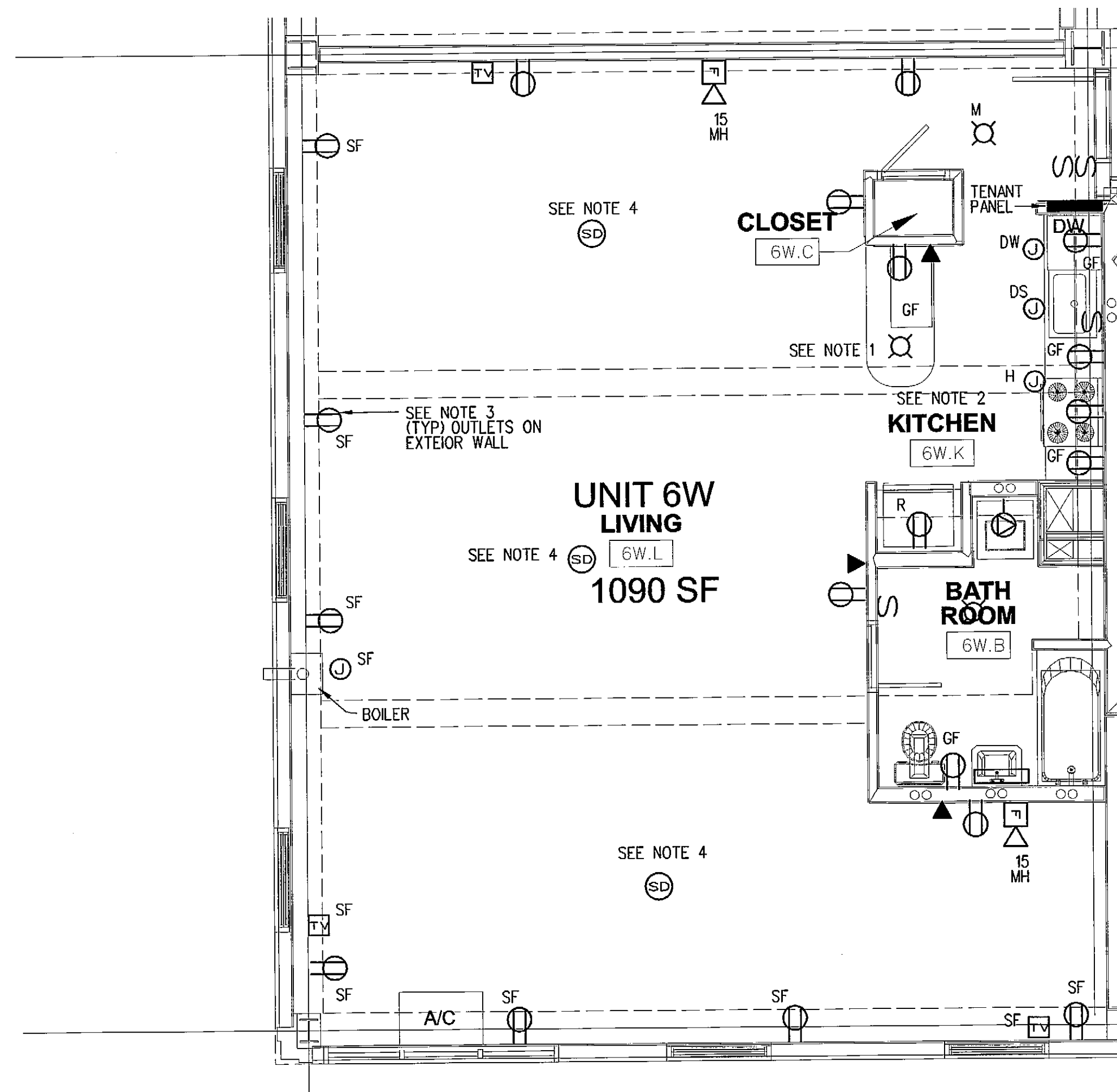
CONSULTANTS:
 CIVIL:
 Land Use Consultants
 668 Riverside Street
 Portland, ME 04103
 207-876-3313
 STRUCTURAL:
 Stevens Design Consulting
 22 Oakwood Drive
 Old Orchard Beach, ME 04064
 207-934-8038
 MECHANICAL:
 Wilburys Engineering
 10 Danforth Street
 Portland, ME 04101
 207-678-7449
 ELECTRICAL:
 Bennett Engineering
 7 Bennett Road
 Freeport, ME 04032
 207-866-9475

REVISIONS:
 JAN 2, 2006 BID SET
 FEB 9, 2006 PERMIT SET
 FEB 23, 2006
 CONSTRUCTION
 DOCUMENTS

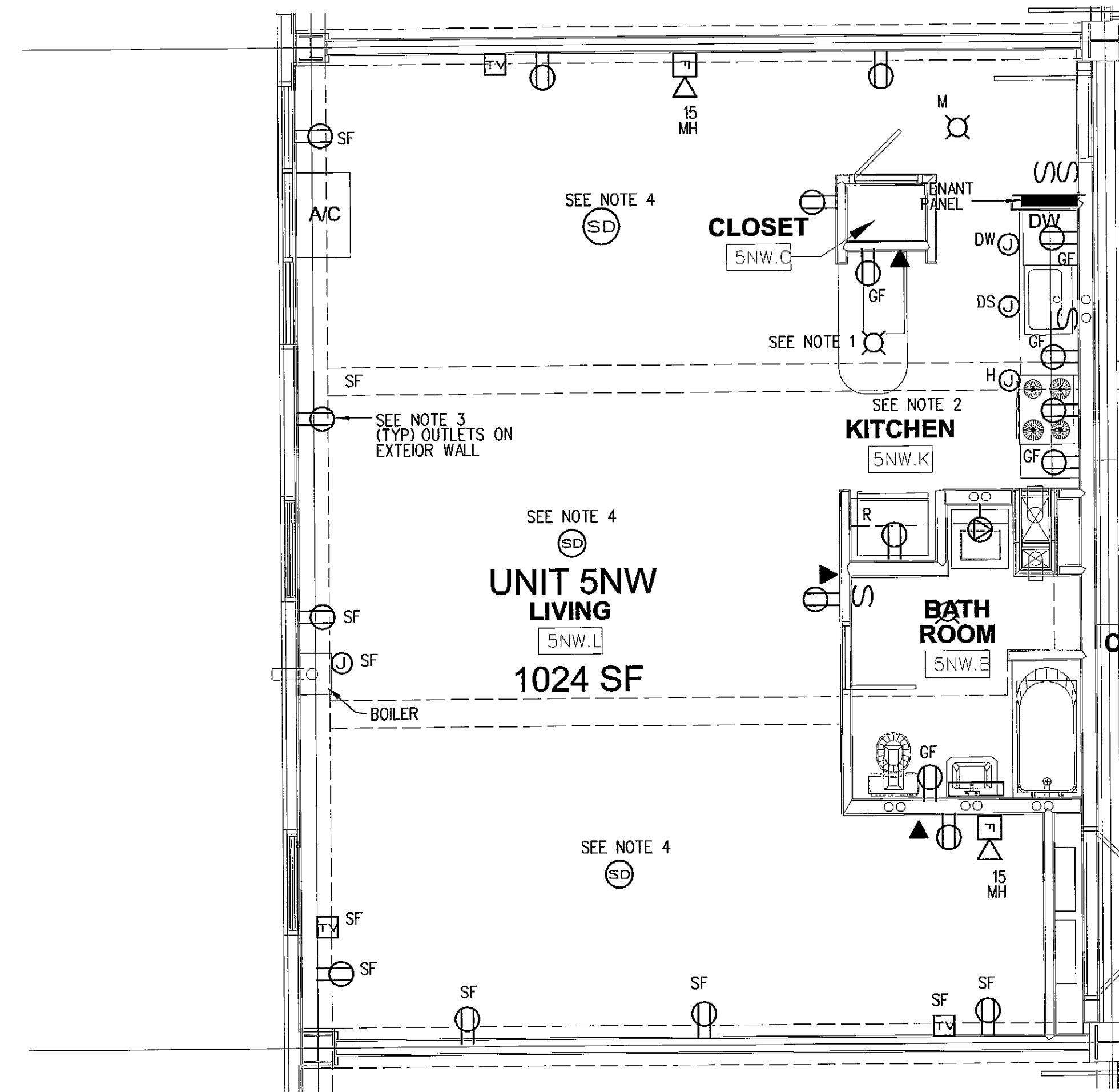
DATE:
 PROJECT No. 0422
 DRAWN BY: WSBJR SPD
 CHECKED BY: CWA/WSBJR
 SCALE: AS NOTED

SHEET TITLE:
 TYPICAL UNIT
 ENLARGED
 ELECTRICAL
 PLANS

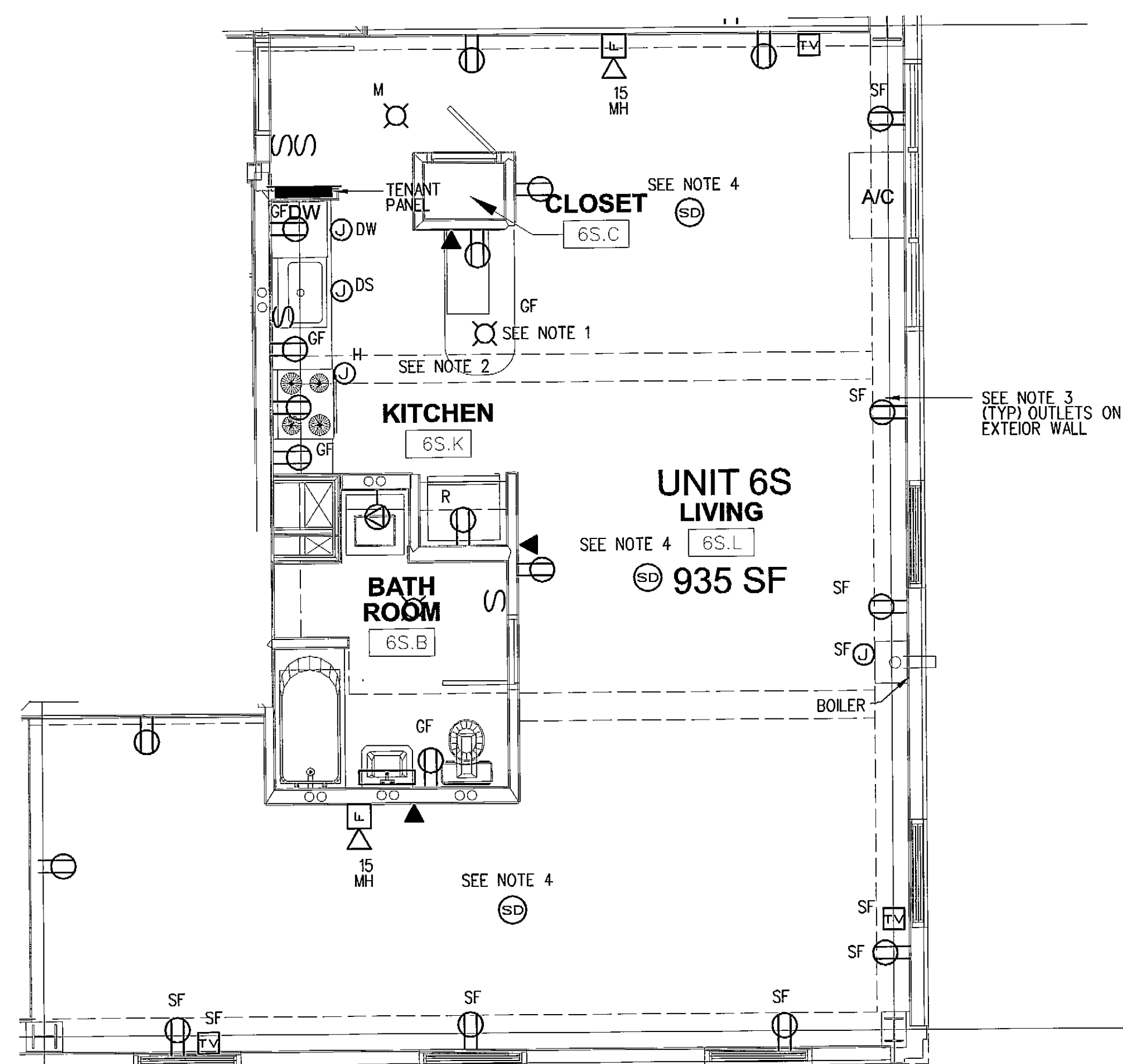
E2.1



TYPICAL UNIT TYPE "A" - ENLARGED ELECTRICAL PLAN
 SCALE: 1/4"=1'-0"



UNIT 5NW - ENLARGED ELECTRICAL PLAN
 SCALE: 1/4"=1'-0"

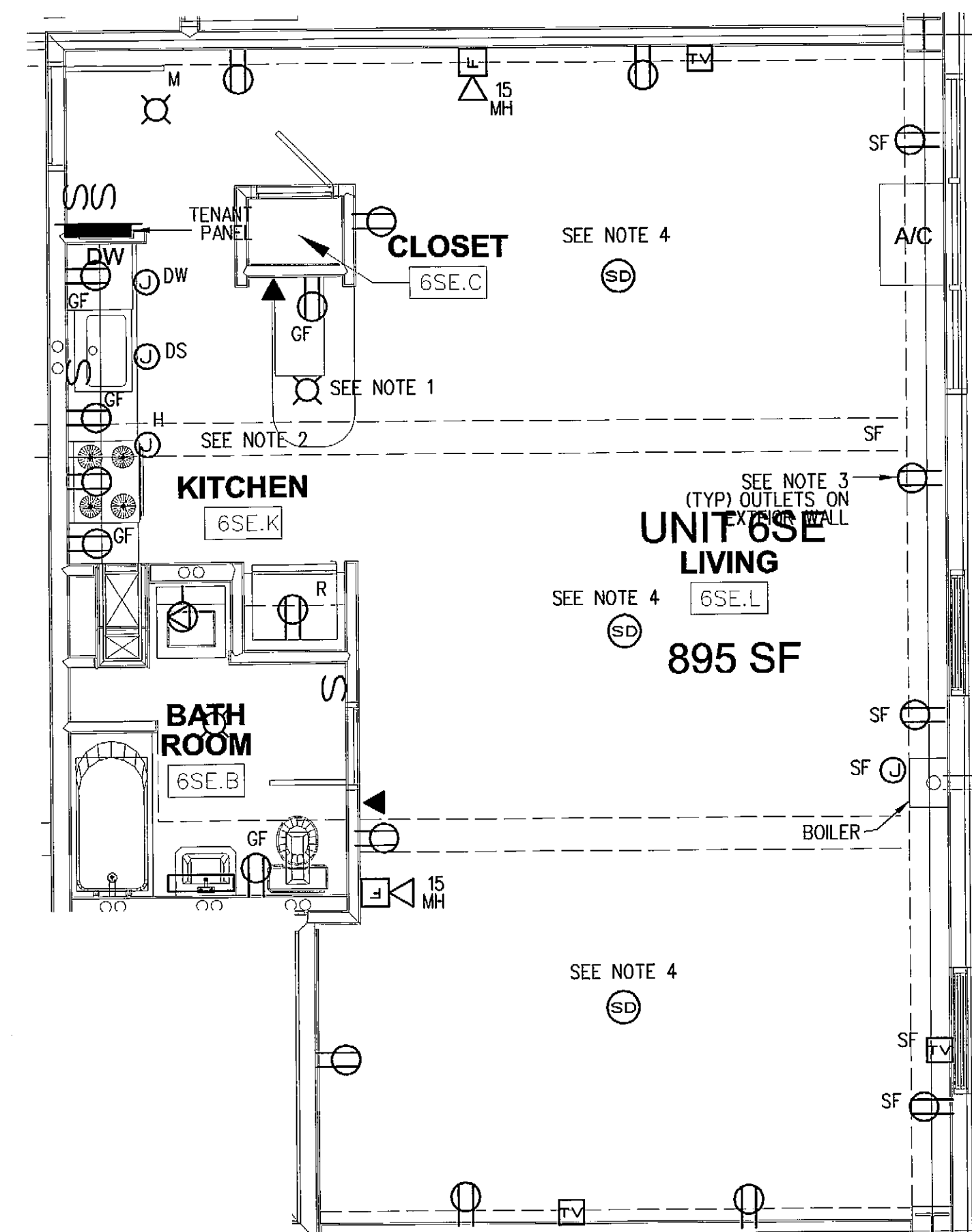


TYPICAL UNIT TYPE "B" - ENLARGED ELECTRICAL PLAN
 SCALE: 1/4"=1'-0"

PROJECT:		SINGLE PHASE		PANEL DESIGNATION:	
CHESTNUT STREET LOFTS		PANELBOARD SCHEDULE		L10000 (TYPICAL TENANT PANEL)	
PORTLAND, MAINE		RECESSED			
MAIN LUGS: 100A		VOLTS: 120/208	PHASE: 1	WIRE: 3	
KVA LOAD	LOADCENTER	10,000 AC		KVA LOAD	
4.0	DISPOSAL	1-20	20-2	BEDROOM	1.6
4.0	BOILER	3-20	20-4	BATHROOM OUTLET	1.5
1.5	REFRIGERATOR & GAS RANGE	5-20	20-6	LIGHTING	1.0
1.5	WATER HEATER	7-20	20-8	LIVINGROOM OUTLETS	1.4
1.5	COUNTER OUTLETS	9-20	20-10	DISHWASHER	.80
1.5	COUNTER OUTLETS	11-20	20-12	FUTURE AC	
1.5	COUNTER OUTLETS	13-20	20-14	DRYER	
1.5	COUNTER OUTLETS	15-20	20-16		
	SPACE	17-20	20-18	SPACE	
		19-20	20-20		
		21-20	20-22		
		23-20	20-24		
TOTAL CONN. LOAD		23.3 KVA		TOTAL DEM. LOAD 16.8 KVA	

* - E.C. SHALL PROVIDE ARC FAULT CIRCUIT INTERRUPTER CIRCUIT BREAKER.

- NOTES:
- ROUGH IN FOR PENDANT MOUNTED COUNTER LIGHT CARRY \$50 ALLOWANCE. FIXTURE SELECTED BY TENANT.
 - CARRY THREE (3) TYPE "N" "HOCKEY PUCK" LOW VOLTAGE UNDER CABINET LIGHTS AND ASSOCIATED TRANSFORMER AND SWITCH.
 - ALL OUTLETS ON EXTERIOR WALLS SHALL BE SURFACE MOUNTED WITH METALLIC JUNCTION BOXES AND CONDUIT.
 - SINGLE STATION SMOKE DETECTORS SHALL BE WIRED FOR COMMON AUDIBLE/VISUAL ALARMS WITHIN THE RESPECTIVE UNIT. INTERWIRING (3*14) NOT SHOWN ON DWGS.



TYPICAL UNIT TYPE "B" - ENLARGED ELECTRICAL PLAN
 SCALE: 1/4"=1'-0"