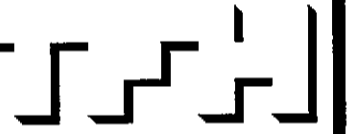


© 2005 TFH ARCHITECTS

**CHESTNUT STREET LOFTS**  
URBAN REVITALIZATION PROJECT  
BY CHESTNUT STREET LLC,  
PORTLAND, MAINE



TFH ARCHITECTS  
100 COMMERCIAL STREET  
PORTLAND MAINE 04101  
TELEPHONE 207 775 6141  
ARCHITECTURE PLANNING

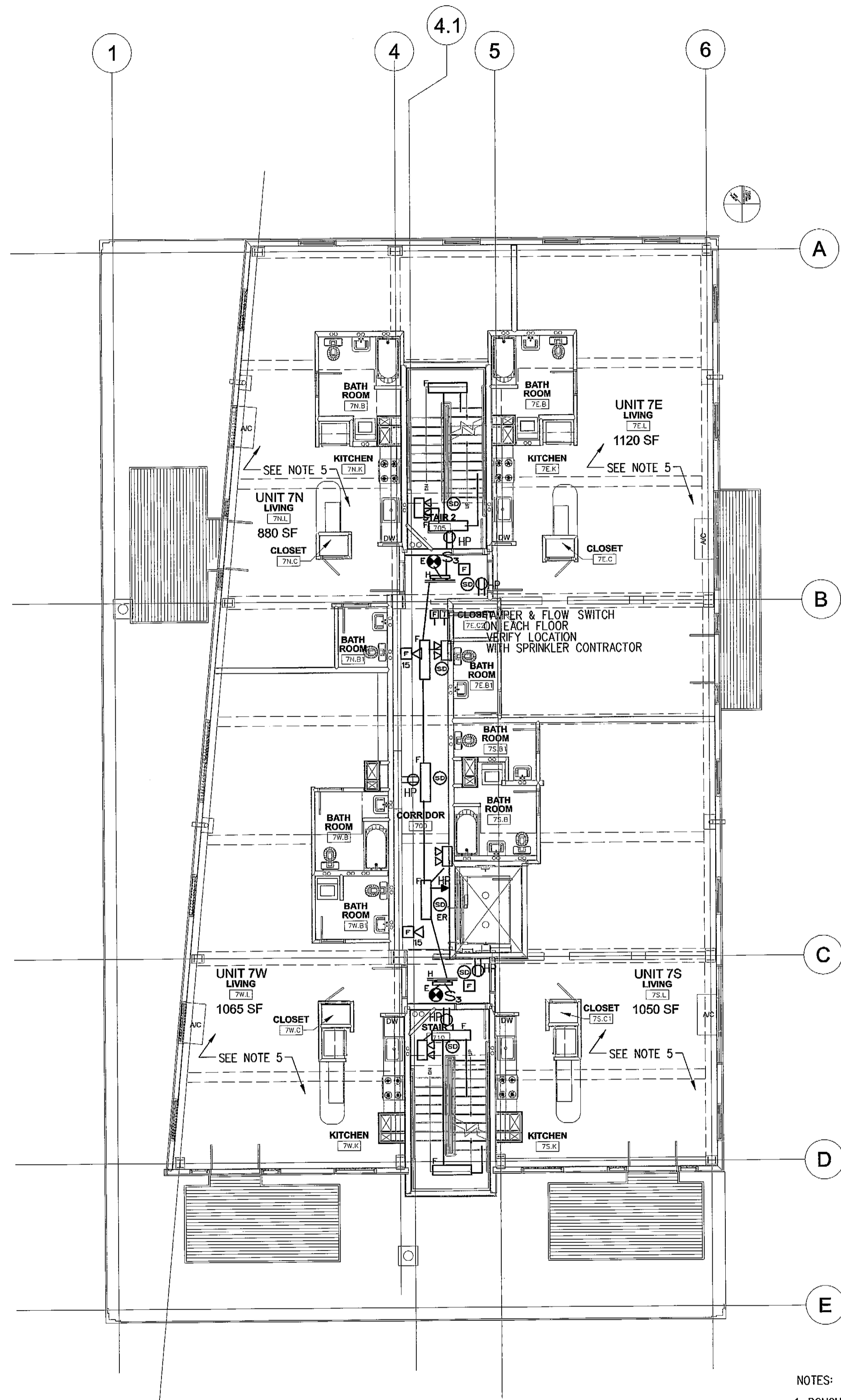
CONSULTANTS:  
**CIVIL:**  
Land Use Consultants  
665 Riverside Street  
Portland, ME 04103  
207-478-3313  
**STRUCTURAL:**  
Structural Design Consulting  
22 Oakmont Drive  
Old Orchard Beach, ME 04054  
207-634-8038  
**MECHANICAL:**  
Whitney Engineering  
10 Danforth Street  
Portland, ME 04101  
207-474-7449  
**ELECTRICAL:**  
Brennet Engineering  
7 Bennett Road  
Falmouth, ME 04032  
207-855-9475

REVISIONS:  
JAN 2, 2006 BID SET  
FEB 9, 2006 PERMIT SET  
FEB 23, 2006  
CONSTRUCTION  
DOCUMENTS

DATE:  
PROJECT No. 0422  
DRAWN BY: WSBJR SPD  
CHECKED BY: CWA WSBJR  
SCALE: AS NOTED

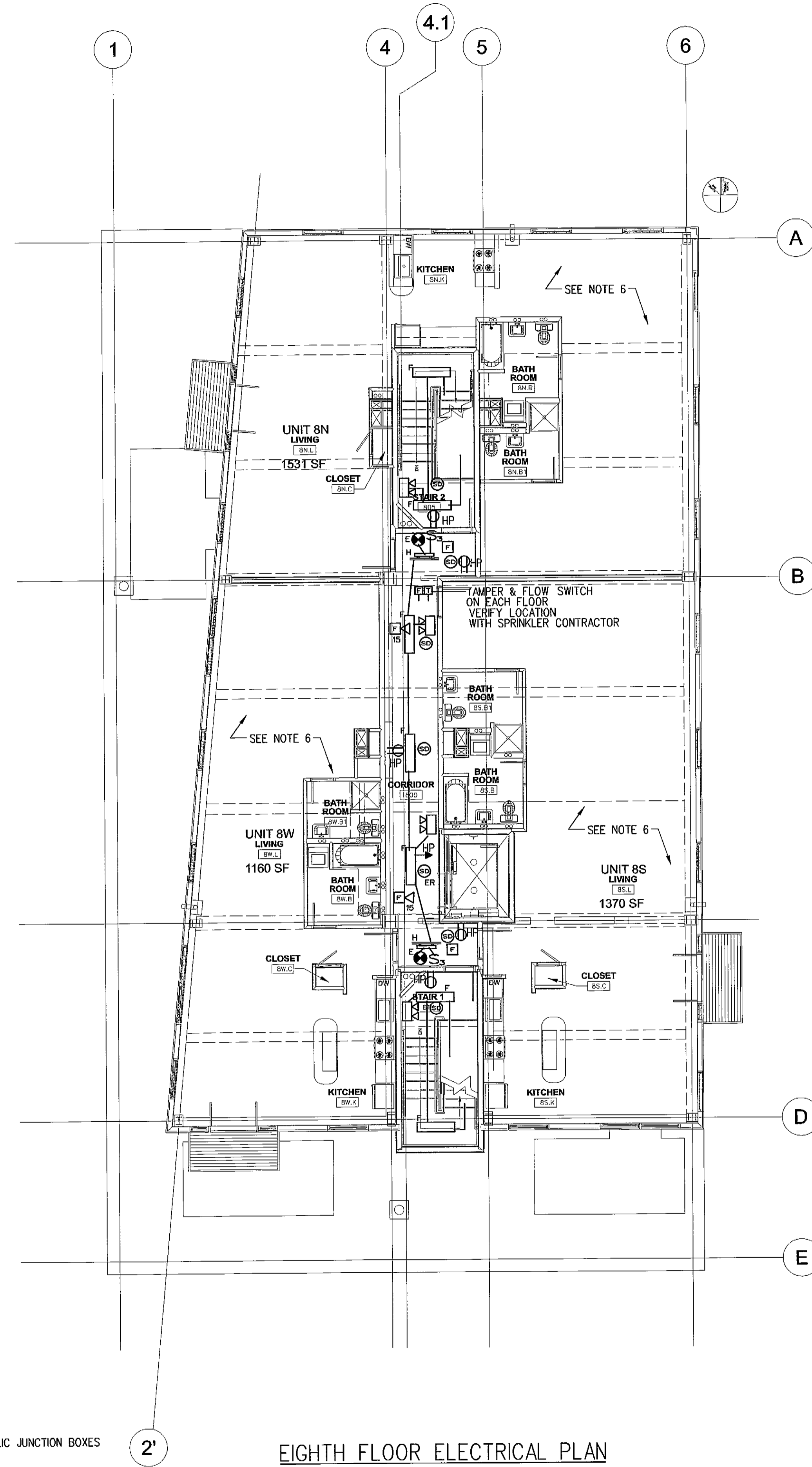
SHEET TITLE:  
SEVENTH AND  
EIGHTH FLOOR  
ELECTRICAL  
PLANS

E1.3



SEVENTH FLOOR ELECTRICAL PLAN  
SCALE: 1/8"=1'-0"

- NOTES:
- ROUGH IN FOR PENDENT MOUNTED COUNTER LIGHT CARRY \$50 ALLOWANCE FIXTURE SELECTED BY TENANT
  - CARRY THREE (3) TYPE "N" "HOCKEY PUCK" LOW VOLTAGE UNDER CABINET LIGHTS AND ASSOCIATED TRANSFORMER AND SWITCH
  - ALL OUTLETS ON EXTERIOR WALLS SHALL BE SURFACE MOUNTED WITH METALLIC JUNCTION BOXES AND CONDUIT.
  - SINGLE STATION SMOKE DETECTORS SHALL BE WIRED FOR COMMON AUDIBLE/VISUAL ALARMS WITHIN THE RESPECTIVE UNIT. INTERWIRING (3\*14) NOT SHOWN ON DWGS.
  - SEE DWG E2.2 FOR 7th FLOOR ENLARGED UNIT ELECTRICAL PLANS.
  - SEE DWG E2.3 FOR 8th FLOOR ENLARGED UNIT ELECTRICAL PLANS.



EIGHTH FLOOR ELECTRICAL PLAN  
SCALE: 1/8"=1'-0"