

© 2005 TFH ARCHITECTS

**CHESTNUT STREET LOFTS**  
 URBAN REVITALIZATION PROJECT  
 BY CHESTNUT STREET LLC,  
 PORTLAND, MAINE

**TFH ARCHITECTS**  
 100 COMMERCIAL STREET  
 PORTLAND MAINE 04101  
 TELEPHONE 207 775 6141  
 ARCHITECTURE PLANNING

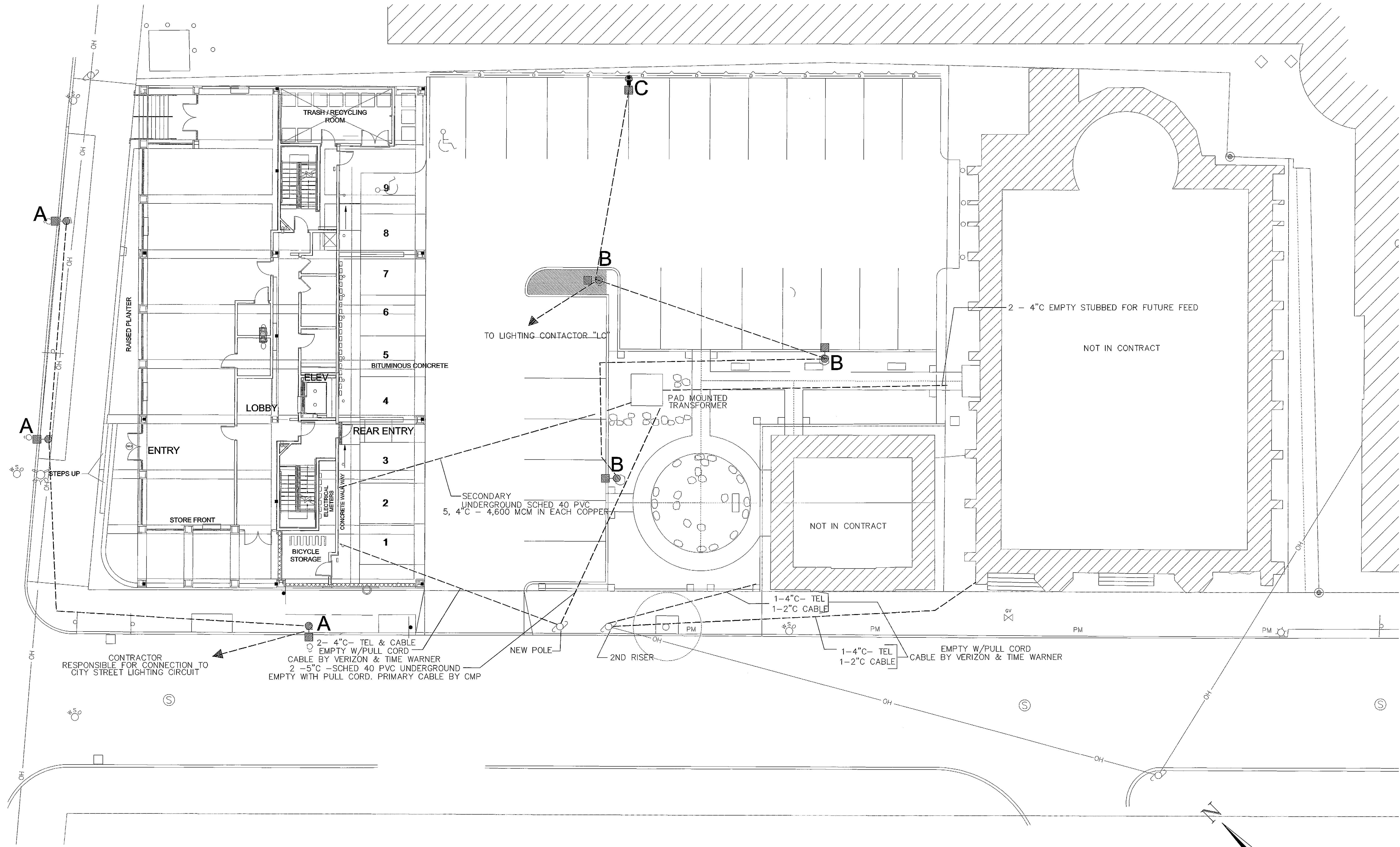
**CONSULTANTS:**  
**CIVIL:**  
 Land Use Consultants  
 305 Riverside Street  
 Portland, ME 04103  
 207-576-3313  
**STRUCTURAL:**  
 Structural Design Consulting  
 22 Oakmont Drive  
 Old Orchard Beach, ME 04064  
 207-934-8038  
**MECHANICAL:**  
 Whittier Engineering  
 10 Danforth Street  
 Portland, ME 04101  
 207-874-7449  
**ELECTRICAL:**  
 Bennett Engineering  
 7 Bennett Road  
 Prospect, ME 04102  
 207-855-9475

**REVISIONS:**  
 JAN 2, 2006 BID SET  
 FEB 9, 2006 PERMIT SET  
 FEB 23, 2006  
 CONSTRUCTION DOCUMENTS

**DATE:**  
**PROJECT No.** 0422  
**DRAWN BY:** WBSJR  
**CHECKED BY:** CWA  
**SCALE:** AS NOTED

**SHEET TITLE:**  
 EXTERIOR ELECTRICAL PLAN

**E1.0**



LUMINAIRE SCHEDULE									
Symbol	Label	Qty	Catalog Number	Description	Lamp	File	Lumens	LLF	Watts
⊙	A	3	ES250MH00X1/ MH	ESPLANADE	IES TYPE II SHORT, CUTOFF/ pro rata 175MH	47384.IES	14400	0.61	175
○	B	3	GV70DMH00X5NX	GRANVILLE	70W CLEAR MH	42620.IES	5000	0.65	70
⊞	C	1	P175MH00WFX	PECHINA	175W CLEAR MH	102474.IES	12800	0.61	1

BUILDING RECESSED SOFFIT LIGHTING. SEE ARCHITECTURAL PLANS.

