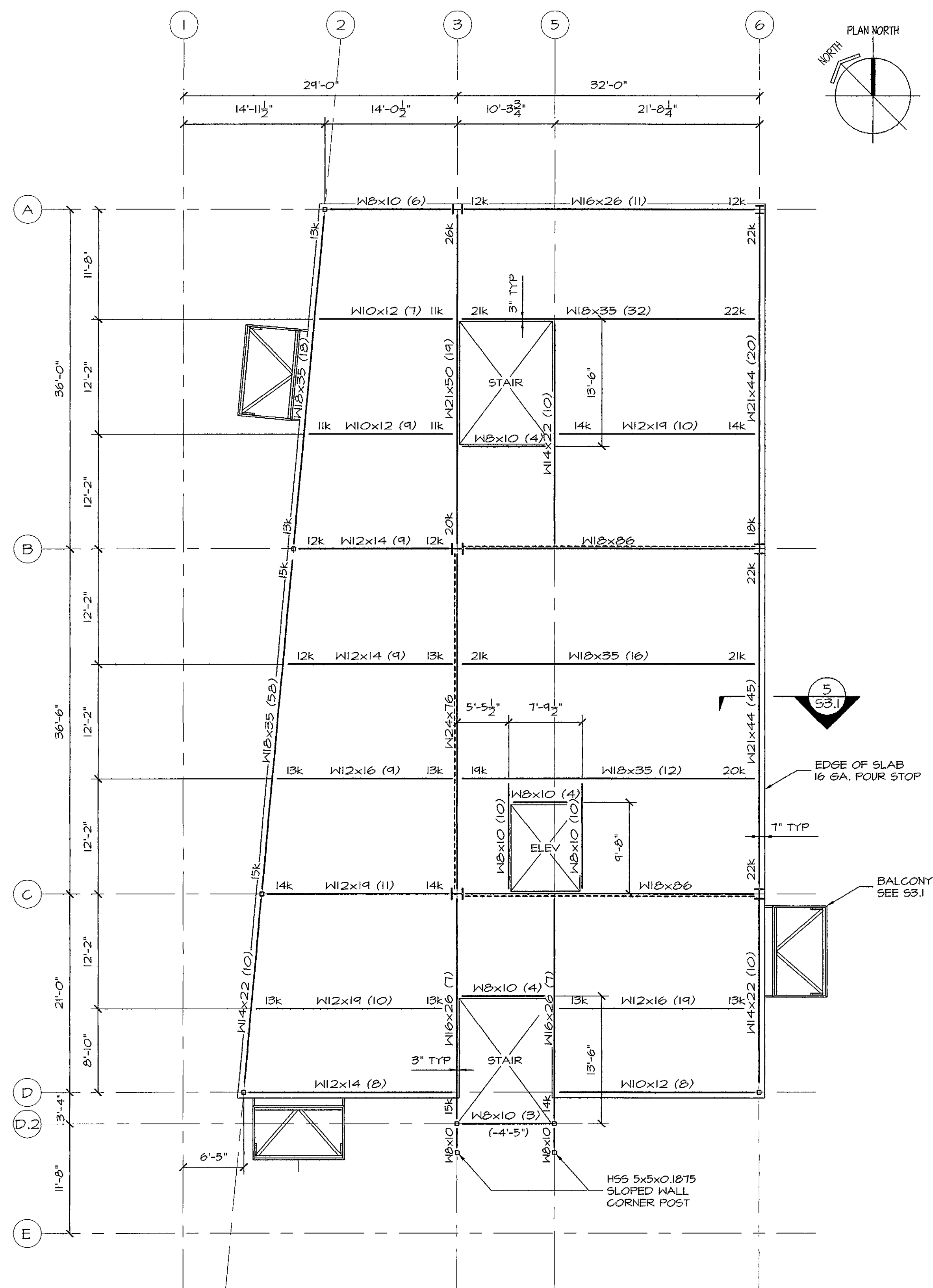


© 2006 TFH ARCHITECTS



EIGHTH FLOOR FRAMING PLAN
1/8"=1'-0"

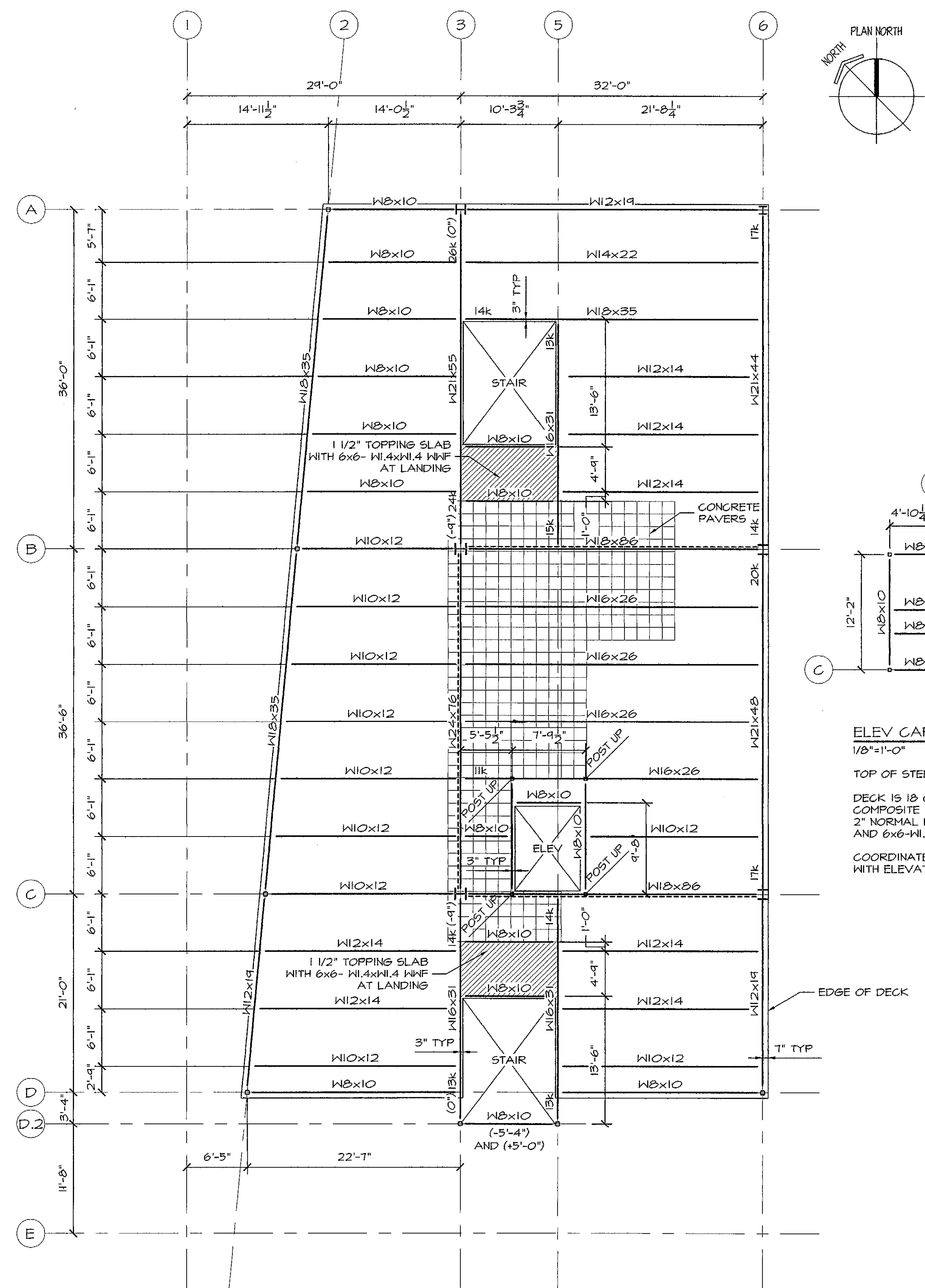
TOP OF STEEL ELEV. = 127'-5".

DECK IS 18 GAGE, 3" GALVANIZED COMPOSITE STEEL DECK WITH 2" NORMAL WEIGHT CONCRETE TOPPING AND 6x6-WI.4xWI.4 WNF.

(X) INDICATES NUMBER OF 3/4"φ x 4 1/2" HEADED STUDS.

DESIGN ALL BEAM CONNECTIONS FOR A 10 KIP REACTION UNLESS NOTED OTHERWISE.

----- INDICATES BRACED BAY.



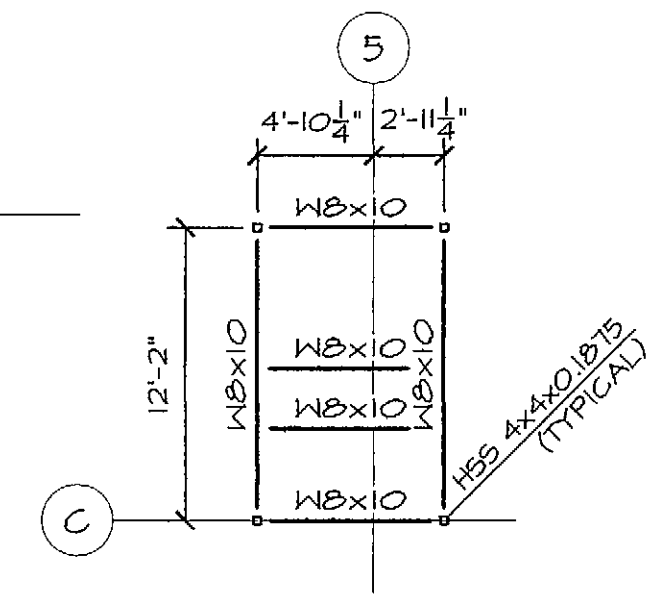
ROOF FRAMING PLAN
1/8"=1'-0"

TOP OF STEEL ELEV. = 138'-4" UNLESS NOTED (x")

DECK IS 18 GAGE, 1 1/2" TYPE B PAINTED METAL DECK.

DESIGN ALL BEAM CONNECTIONS FOR A 10 KIP REACTION UNLESS NOTED OTHERWISE.

----- INDICATES BRACED BAY.



ELEV CAP PLAN
1/8"=1'-0"

TOP OF STEEL ELEV. = 143'-0".

DECK IS 18 GAGE, 3" GALVANIZED COMPOSITE STEEL DECK WITH 2" NORMAL WEIGHT CONCRETE TOPPING AND 6x6-WI.4xWI.4 WNF.

COORDINATE INTERIOR BEAM LOCATIONS WITH ELEVATOR SUPPLIER.

TFH ARCHITECTS
100 COMMERCIAL STREET
PORTLAND MAINE 04101
TELEPHONE 207 775 6141
ARCHITECTURE PLANNING

CONSULTANTS:

REVISIONS:
100% CONST. DOC.

DATE: 02/24/06

PROJECT No. 0422

DRAWN BY: DJT

CHECKED BY: DJT

SCALE: 1/8"=1'-0"

SHEET TITLE:
8TH FLOOR AND ROOF FRAMING PLANS

S1.4