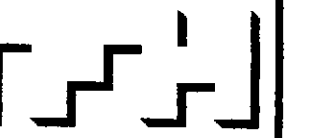


© 2006 TFH ARCHITECTS



TFH ARCHITECTS
 100 COMMERCIAL STREET
 PORTLAND MAINE 04101
 TELEPHONE 207 775 6141
 ARCHITECTURE PLANNING

CONSULTANTS:

REVISIONS:
 100% CONST. DOC.

DATE: 02/24/06

PROJECT No. 0422

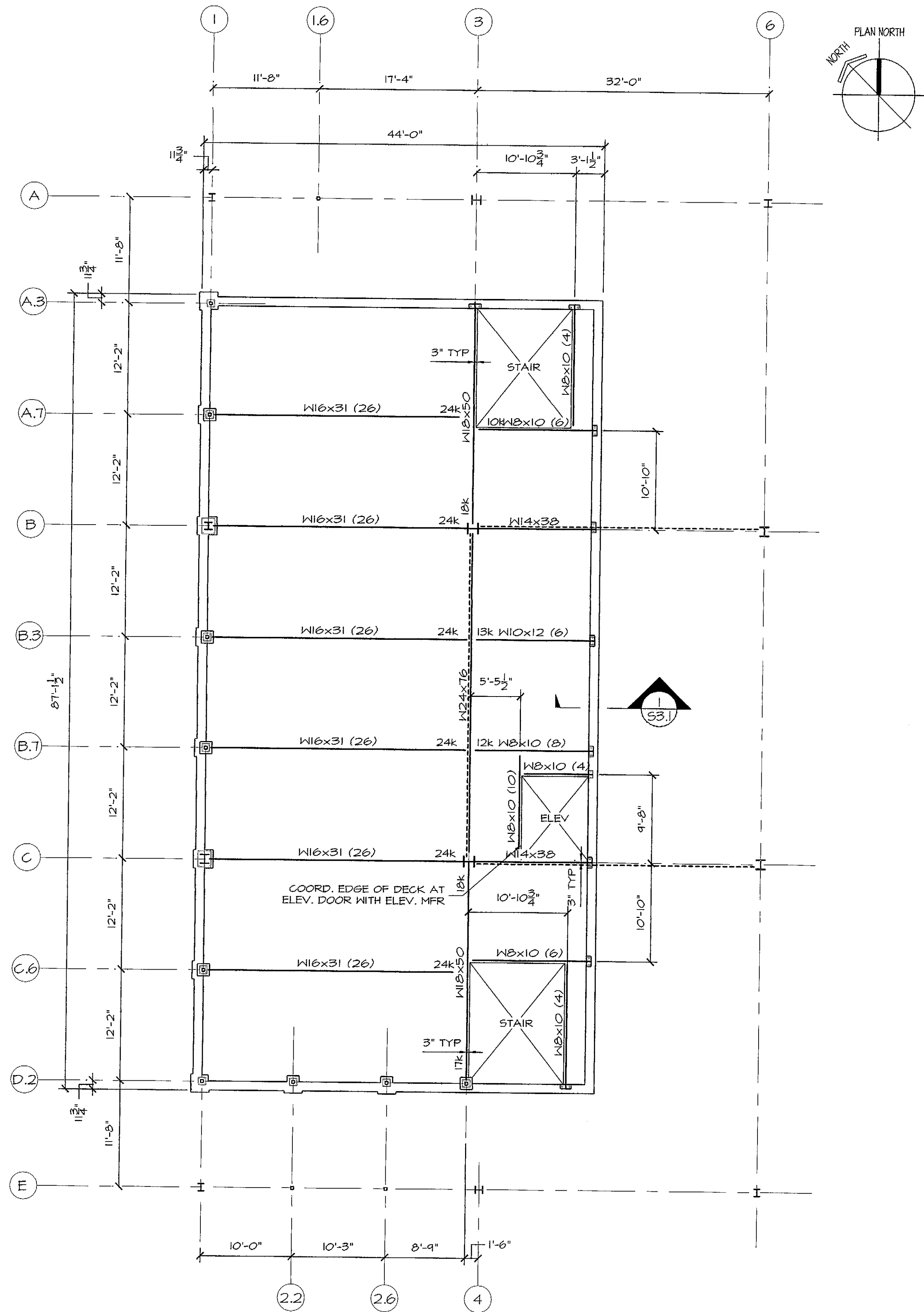
DRAWN BY: DJT

CHECKED BY: DJT

SCALE: 1/8"=1'-0"

SHEET TITLE:
 1ST & 2ND FLOOR
 FRAMING PLANS

S1.2



FIRST FLOOR FRAMING PLAN
 1/8"=1'-0"

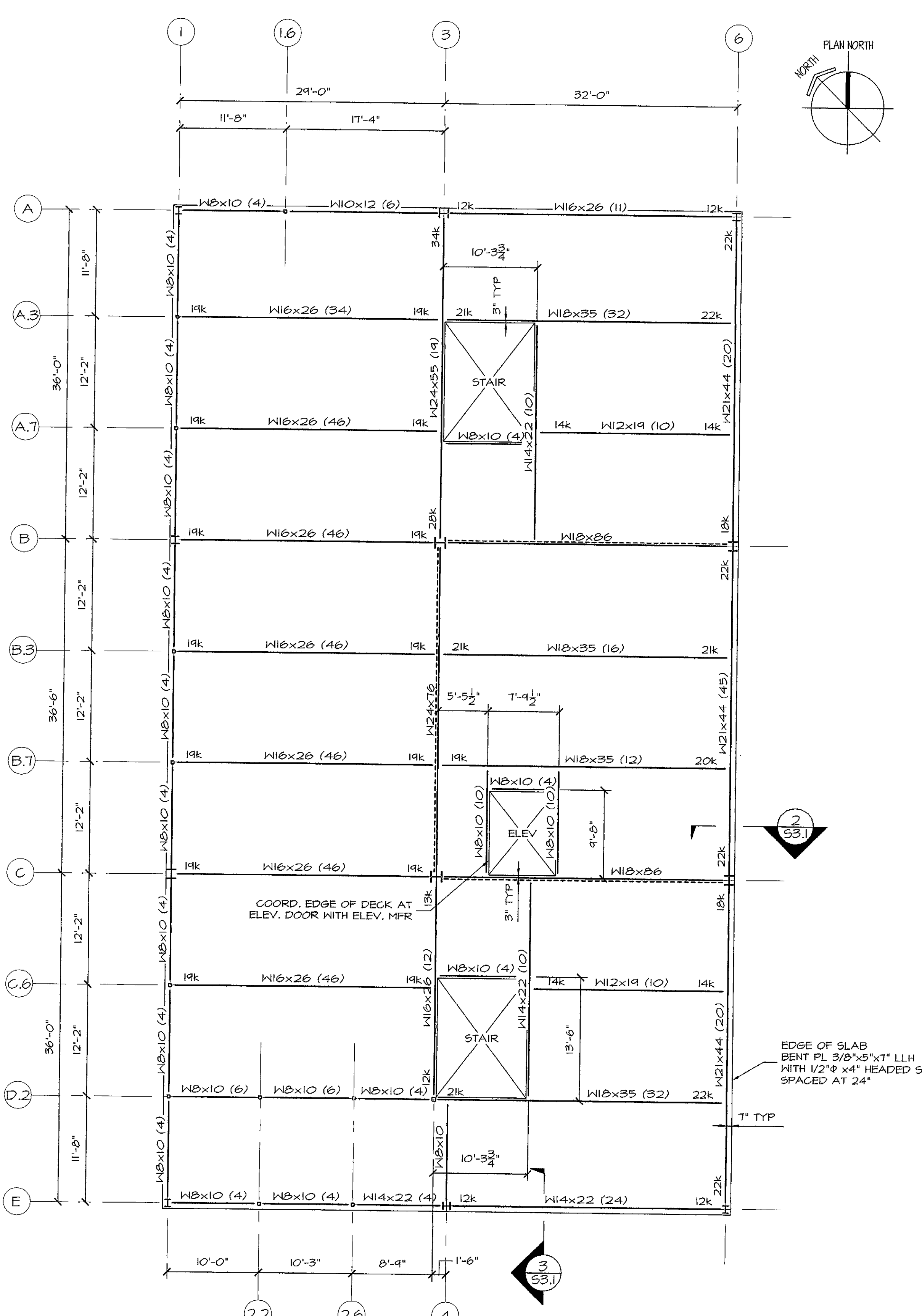
TOP OF STEEL ELEV. = 57'-1"

DECK IS 18 @AGE, 3" GALVANIZED COMPOSITE STEEL DECK WITH 2" NORMAL WEIGHT CONCRETE TOPPING AND 6x6-WI.4xWI.4 WNF.

(X) INDICATES NUMBER OF 3/4"φ x 4 1/2" HEADED STUDS.

DESIGN ALL BEAM CONNECTIONS FOR A 10K REACTION UNLESS NOTED OTHERWISE.

----- INDICATES BRACED BAY.



SECOND FLOOR FRAMING PLAN
 1/8"=1'-0"

TOP OF STEEL ELEV. = 67'-5"

DECK IS 18 @AGE, 3" GALVANIZED COMPOSITE STEEL DECK WITH 2" NORMAL WEIGHT CONCRETE TOPPING AND 6x6-WI.4xWI.4 WNF.

(X) INDICATES NUMBER OF 3/4"φ x 4 1/2" HEADED STUDS.

DESIGN ALL BEAM CONNECTIONS FOR A 10 K REACTION UNLESS NOTED OTHERWISE.

----- INDICATES BRACED BAY.