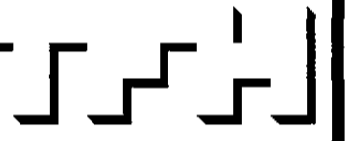


© 2005 TFH ARCHITECTS

CHESTNUT STREET LOFTS

URBAN REVITALIZATION PROJECT
BY CHESTNUT STREET LLC,
PORTLAND, MAINE



TFH ARCHITECTS
100 COMMERCIAL STREET
PORTLAND MAINE 04101
TELEPHONE 207 775 6141
ARCHITECTURE PLANNING

CONSULTANTS:

- CIVIL:** Land Use Consultants
995 Riverside Street
Portland, ME 04103
207-878-3313
- STRUCTURAL:** Structural Design Consulting
21 Oakland Drive
Old Orchard Beach, ME 04064
207-684-8099
- MECHANICAL:** Wilney Engineering
10 Danforth Street
Portland, ME 04101
207-474-7449
- ELECTRICAL:** Bennett Engineering
Bennett Road
Fresno, ME 04032
207-865-8476

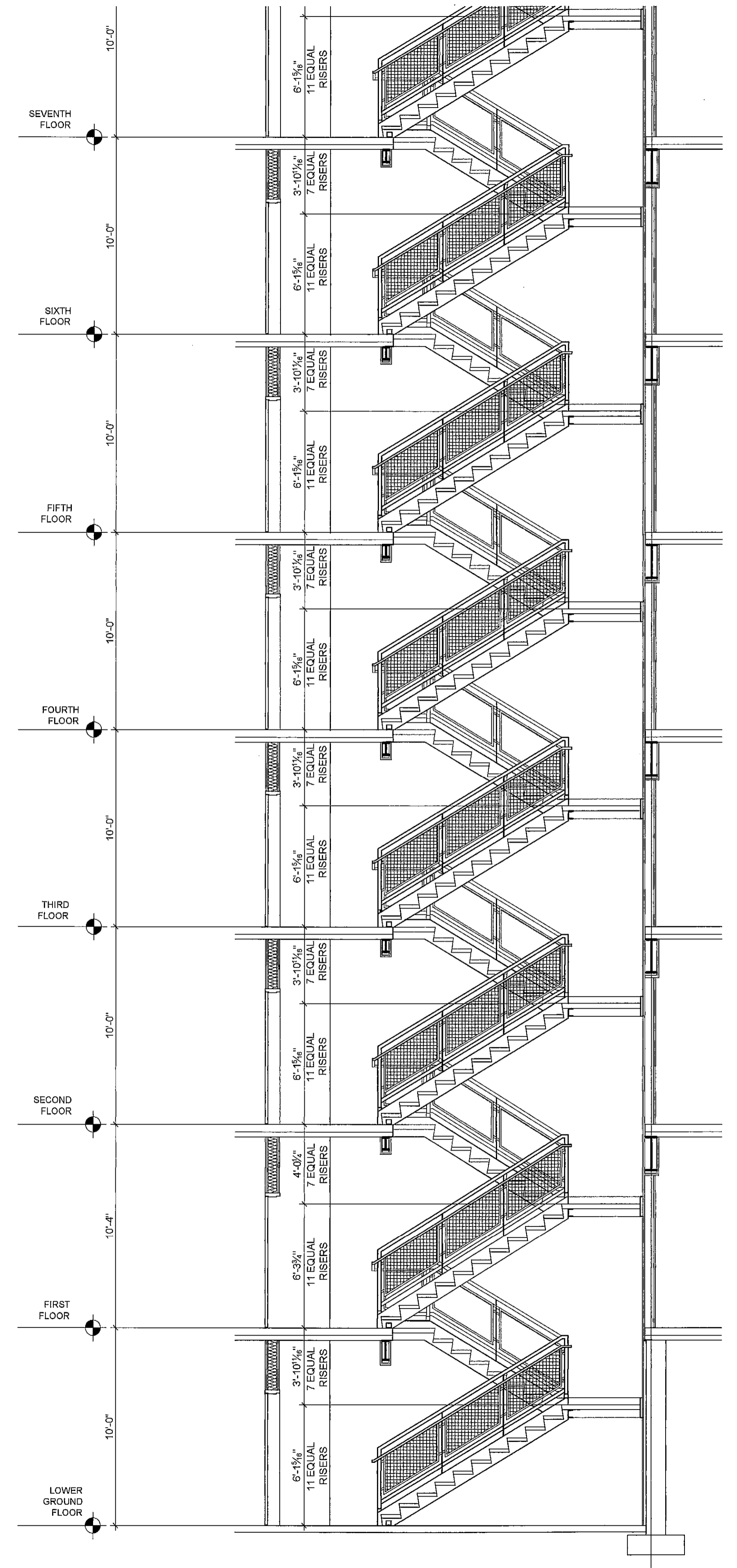
REVISIONS:

2 100% CONSTRUCTION DOCUMENTS
10/24/06

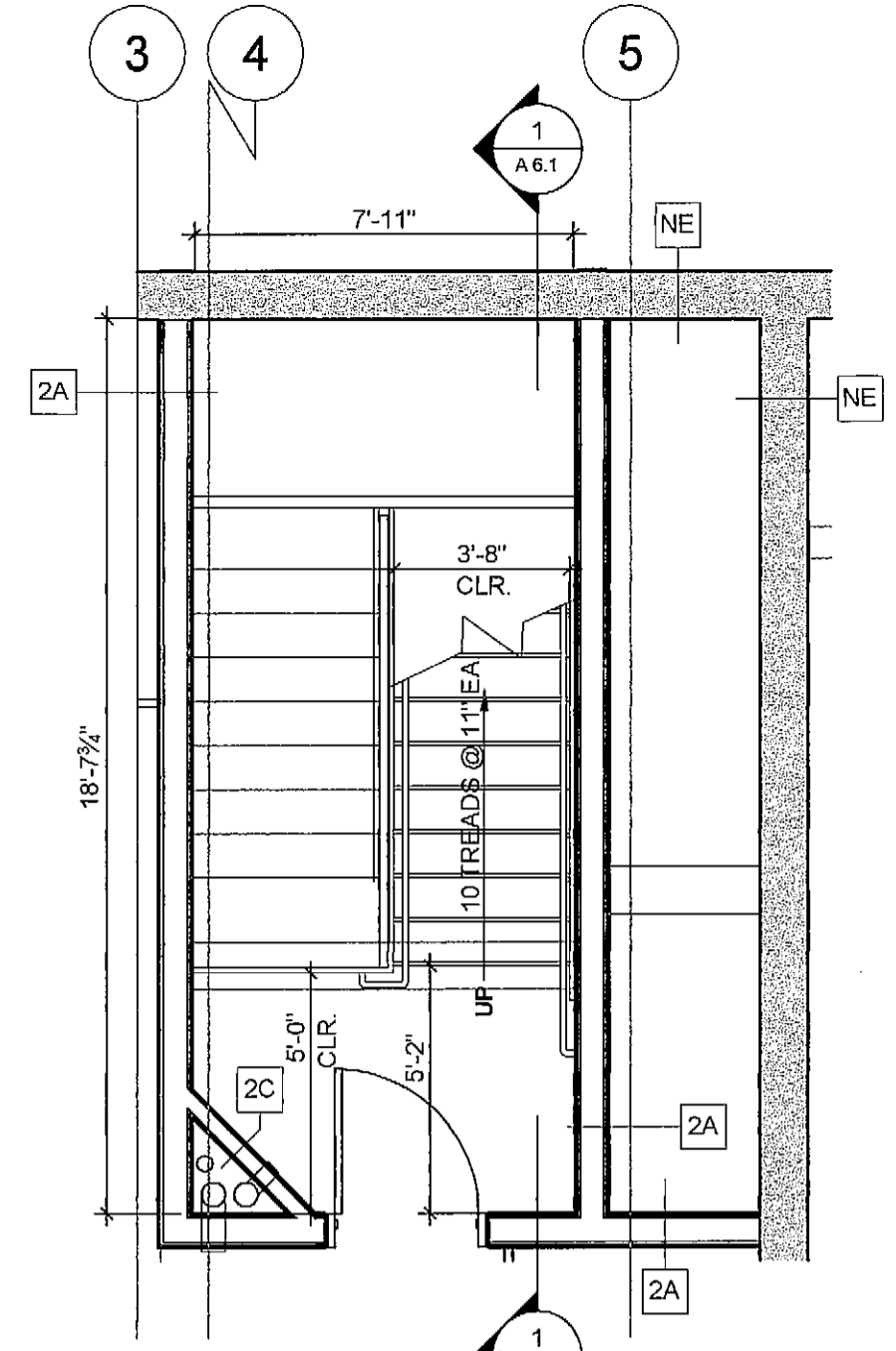
DATE: _____
PROJECT No. 0422
DRAWN BY: RJS
CHECKED BY: TST
SCALE: AS NOTED

SHEET TITLE:
STAIR PLAN
AND SECTION
DETAIL

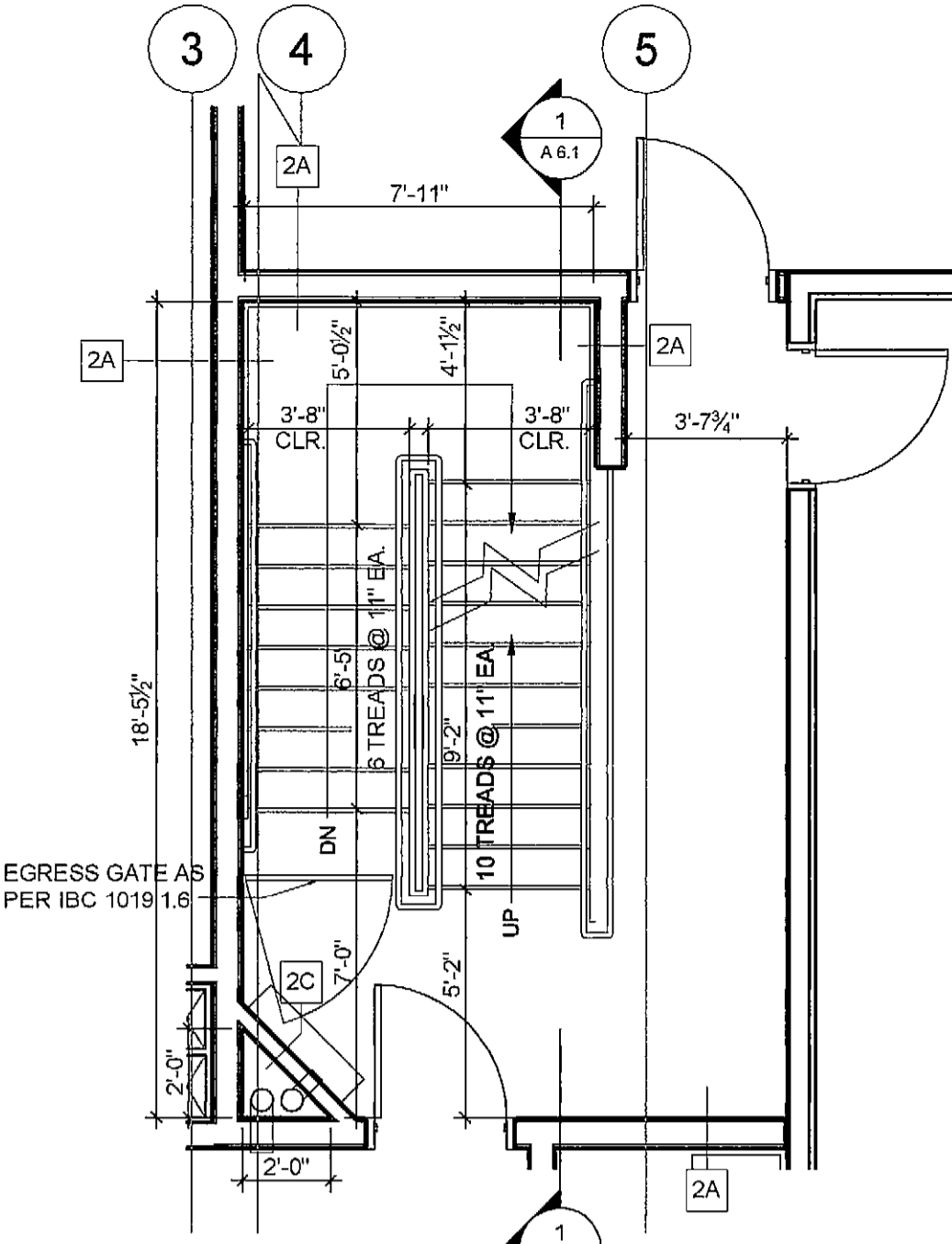
A6.1



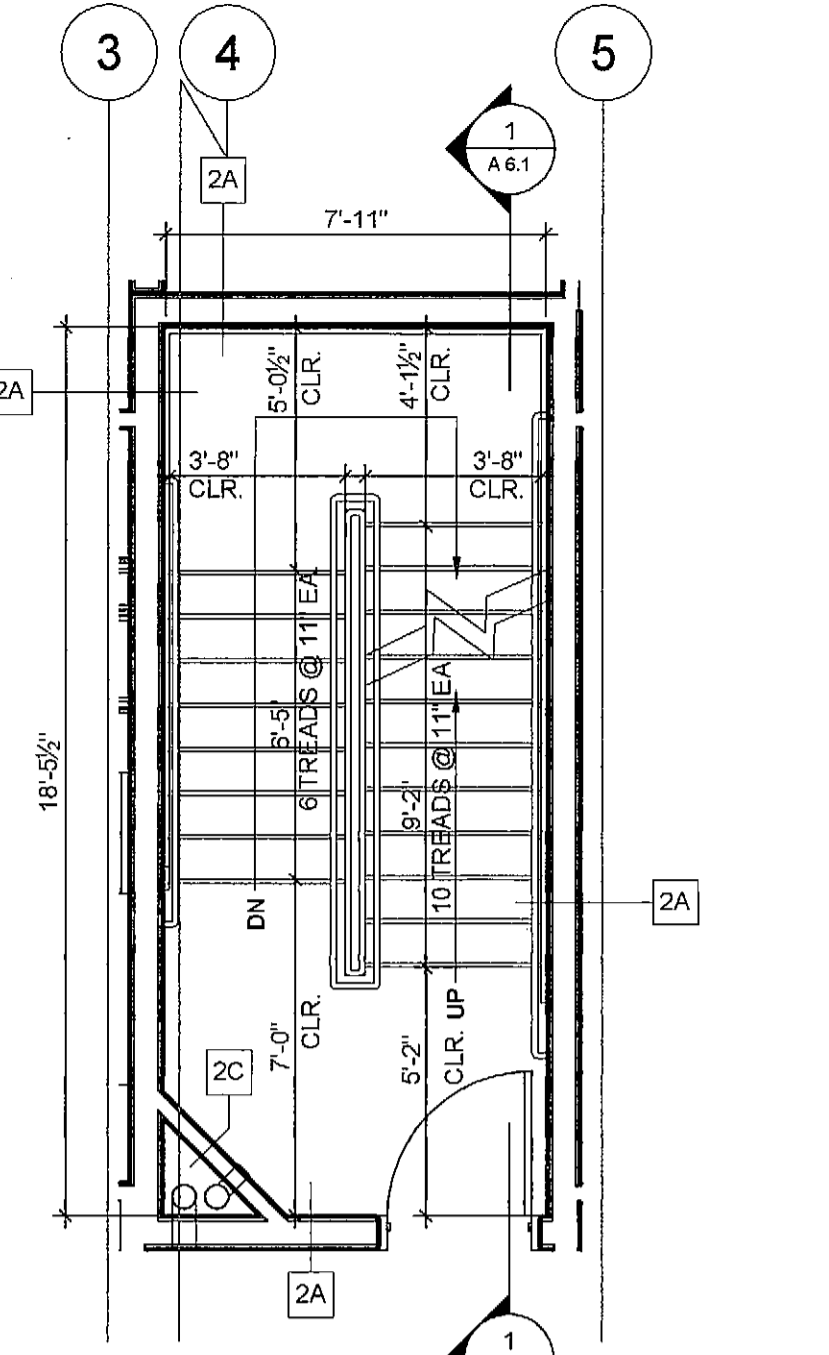
1 SECTION DETAIL @ STAIR #2
A6.1 1/4" = 1'-0"



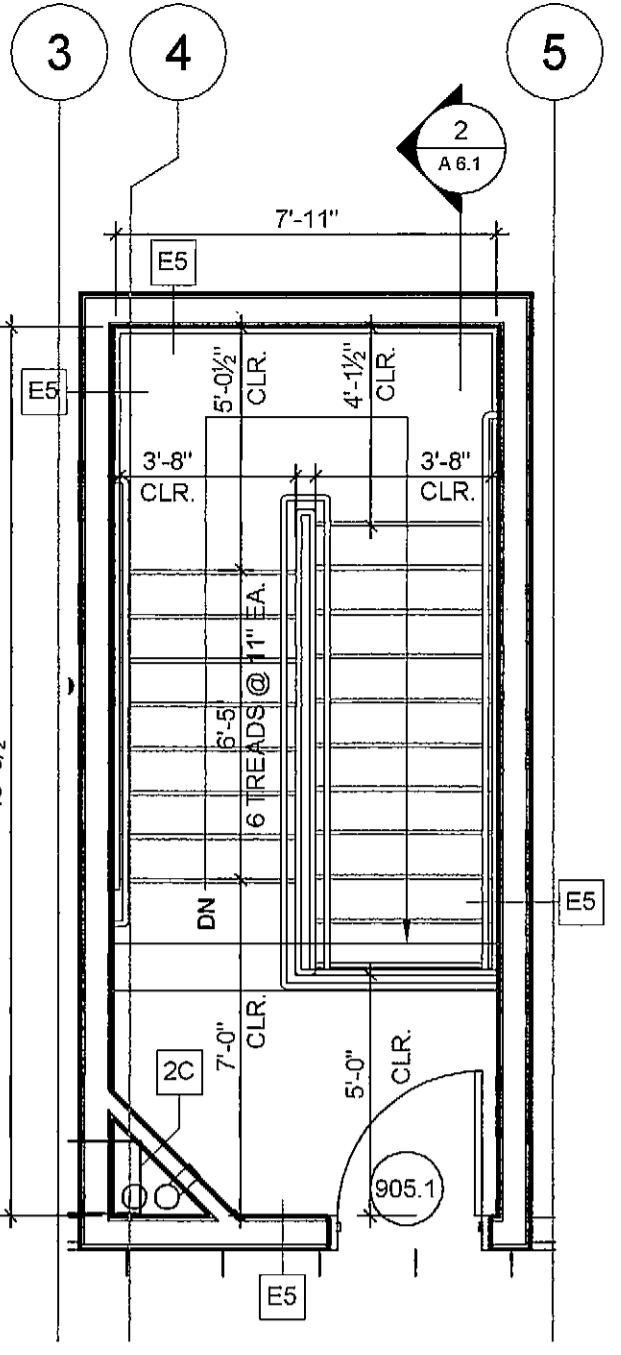
8 BASEMENT PLAN @ STAIR #2
A6.1 1/4" = 1'-0"



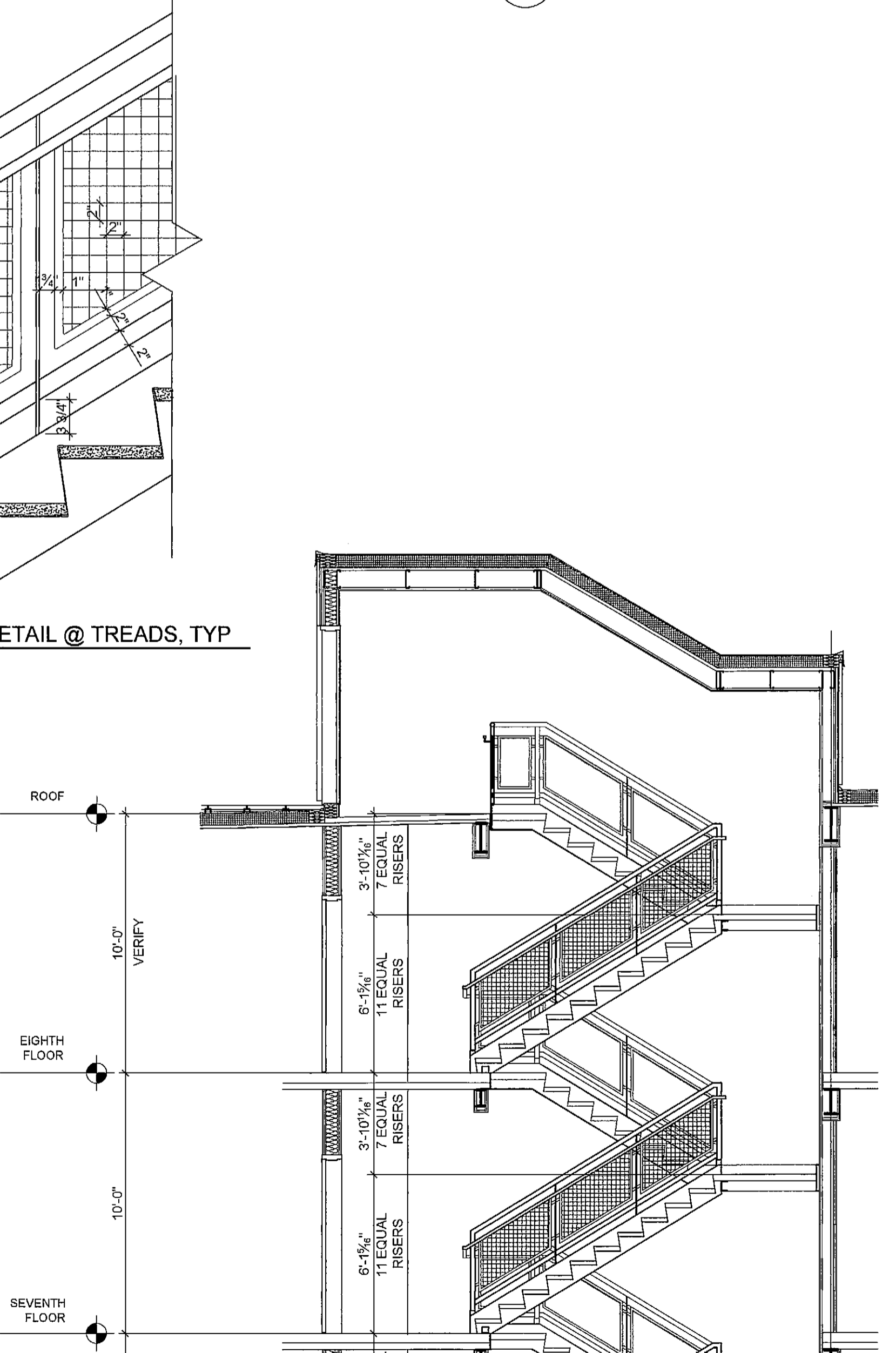
9 1ST FLOOR PLAN @ STAIR #2
A6.1 1/4" = 1'-0"



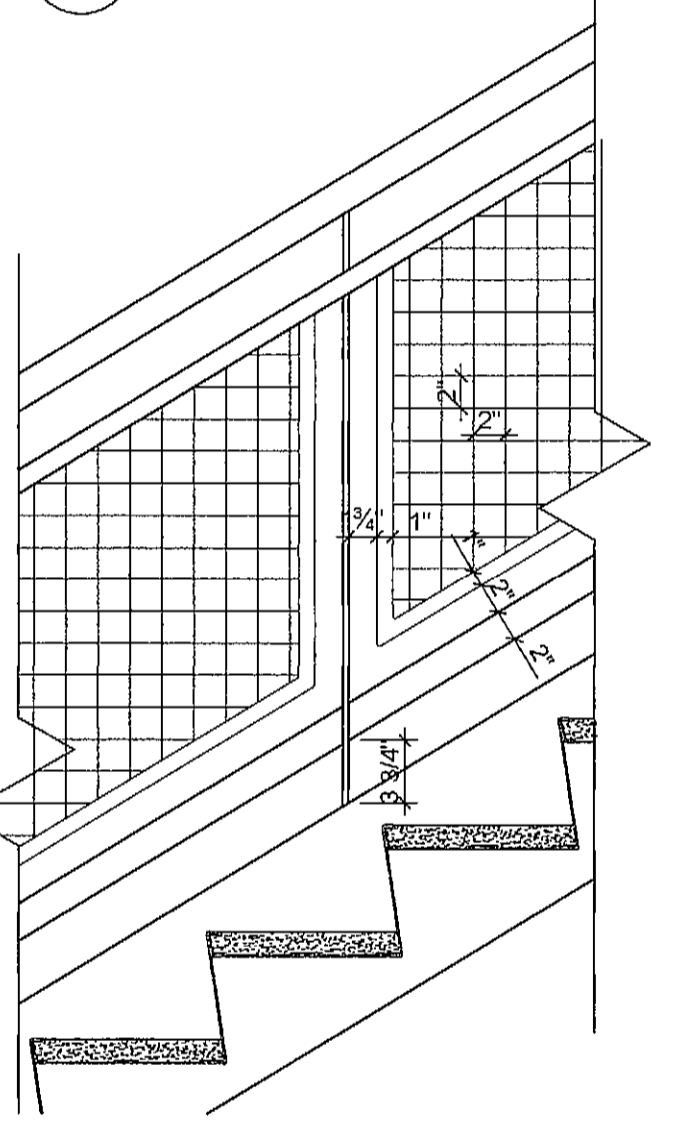
10 2ND - 8TH FLOOR PLAN @ STAIR #2
A6.1 1/4" = 1'-0"



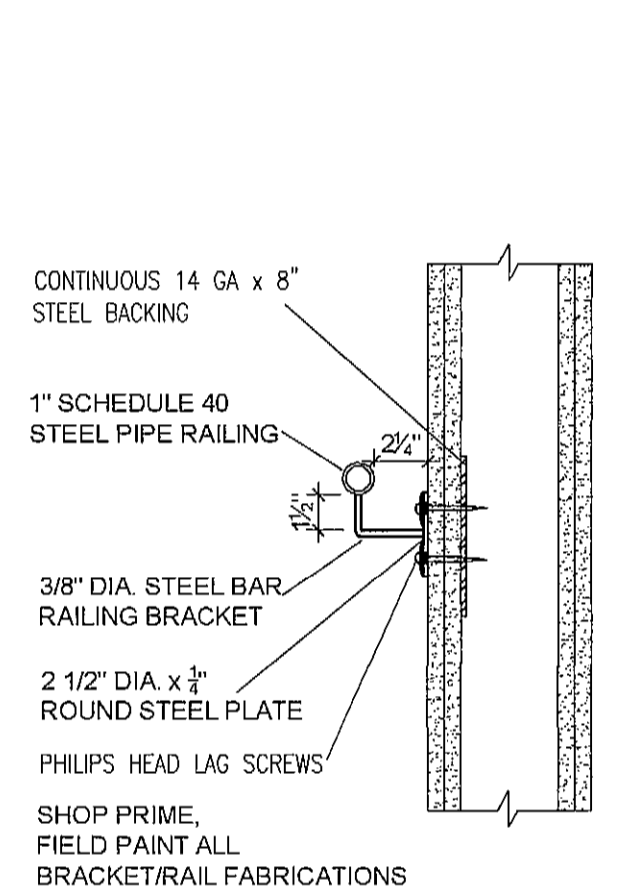
11 ROOF PLAN @ STAIR #2
A6.1 1/4" = 1'-0"



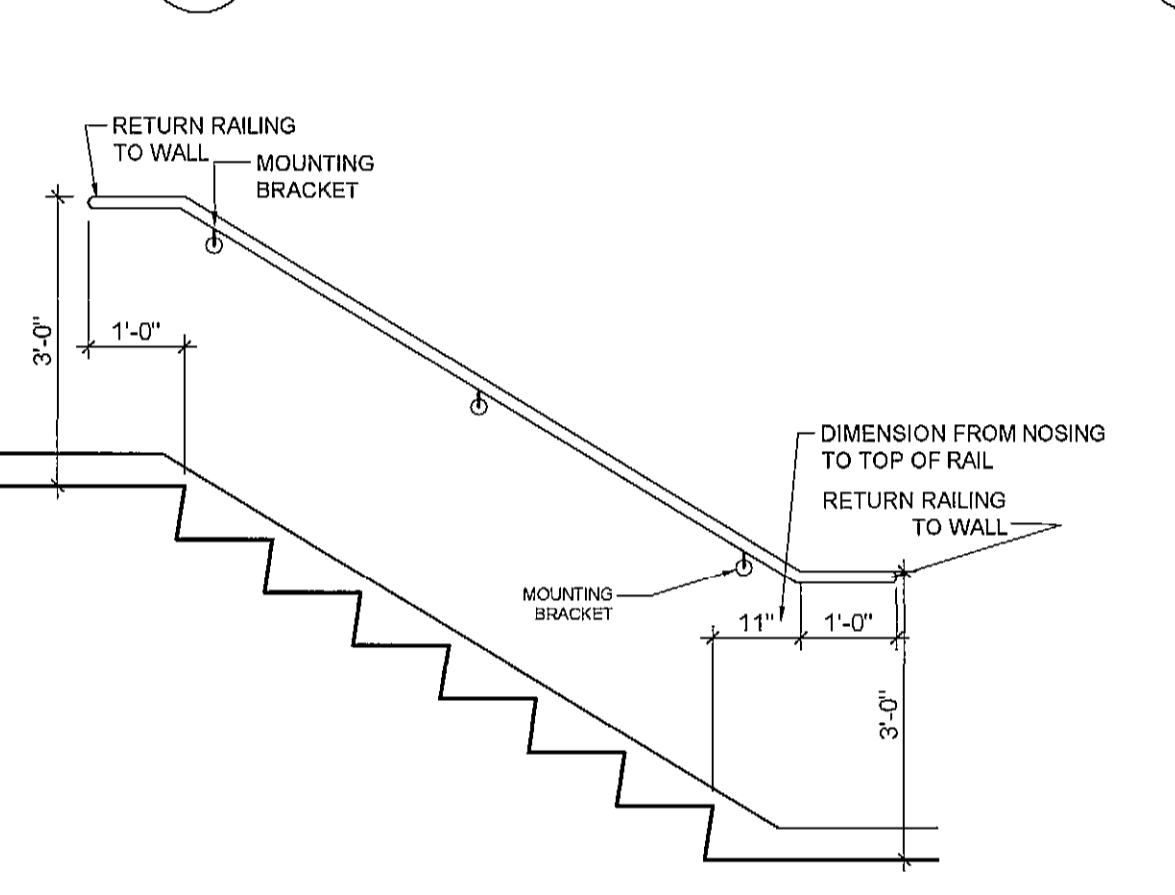
2 SECTION DETAIL @ STAIR #2
A6.1 1/4" = 1'-0"



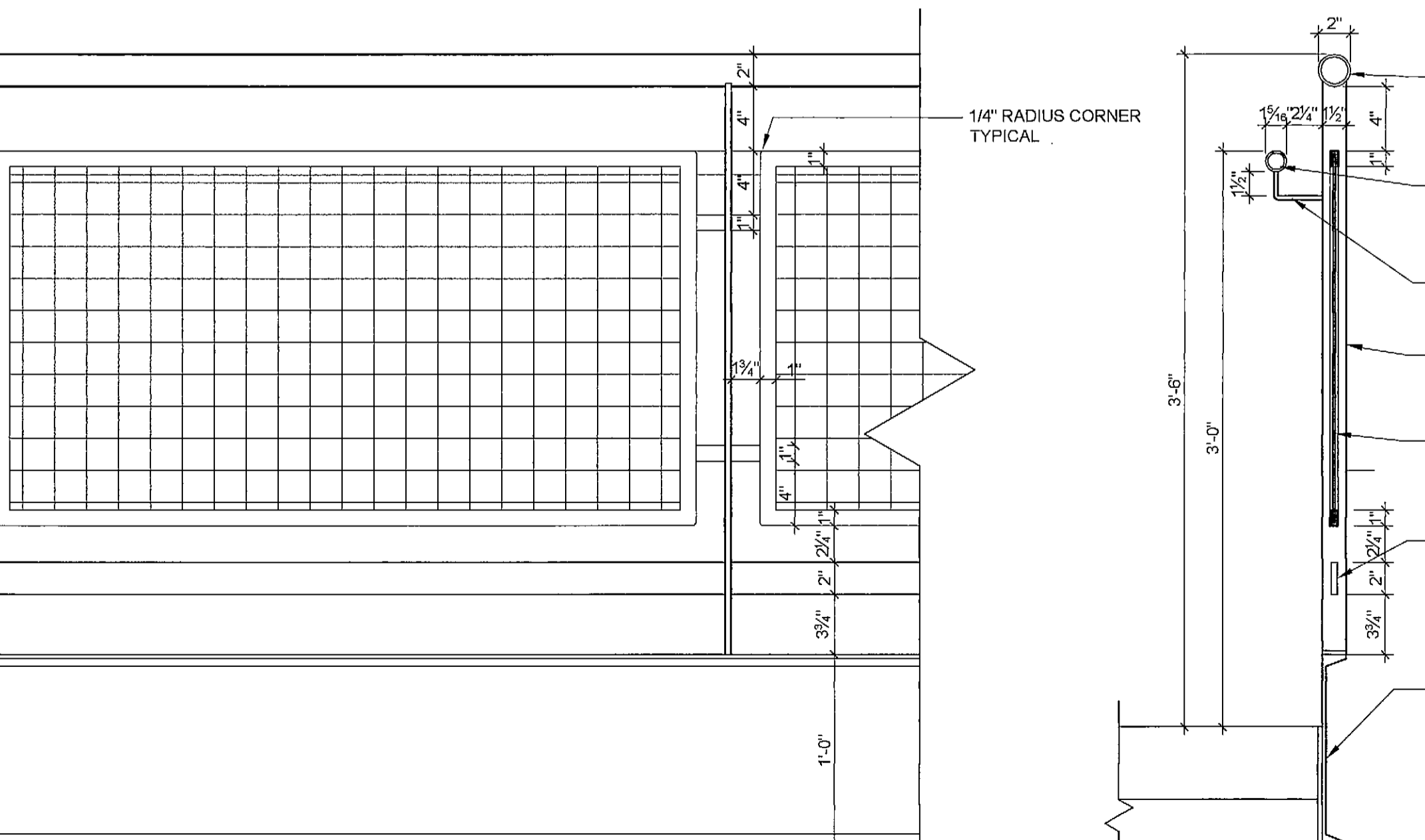
4 HANDRAIL DETAIL @ TREADS, TYP
A6.1 1" = 1'-0"



6 HANDRAIL @ WALL DETAIL
A6.1 1 1/2" = 1'-0"



7 ELEVATION OF WALL MOUNTED HANDRAIL
A6.1 1/2" = 1'-0"



3 GUARDRAIL @ 8TH FLOOR LANDING, TYP
A6.1 1 1/2" = 1'-0"

T:\00_TFH Projects\0422_Chestnut Street\Construction Documents\05-Stair\Detail\A6.1.dwg, 23/02/2005 10:40:22 AM, HP Daighe\pl\750C Plus (E...)