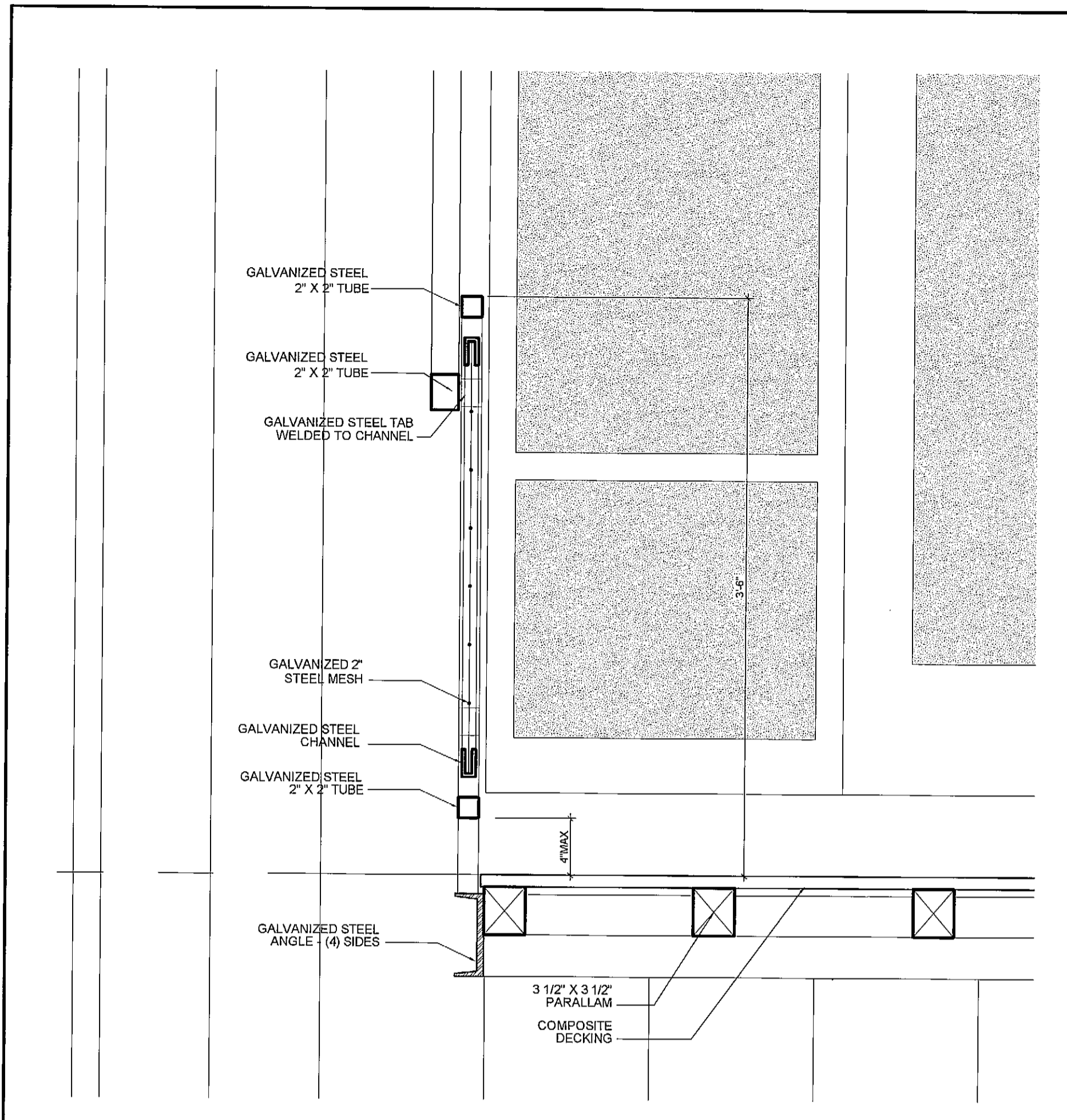
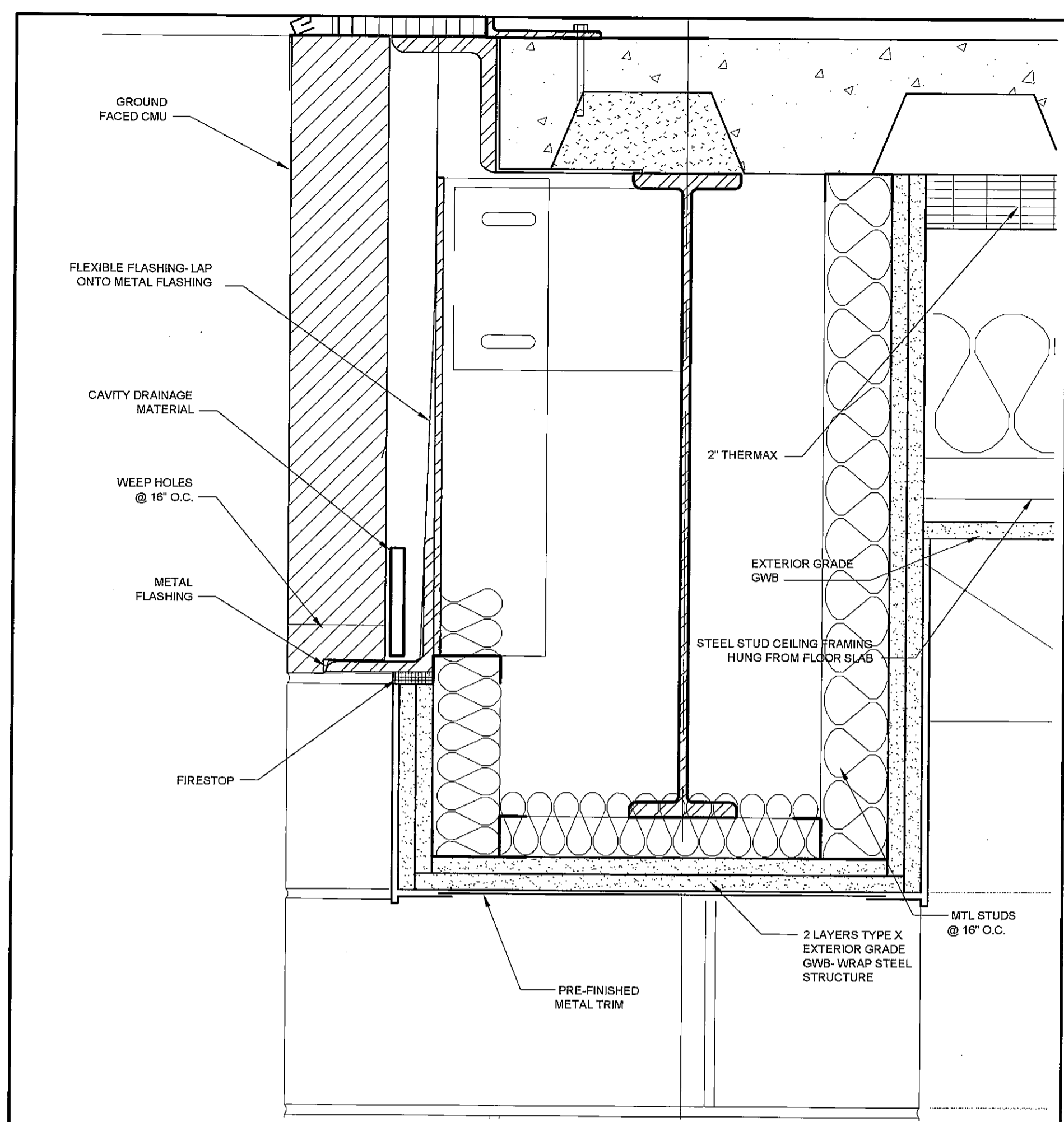


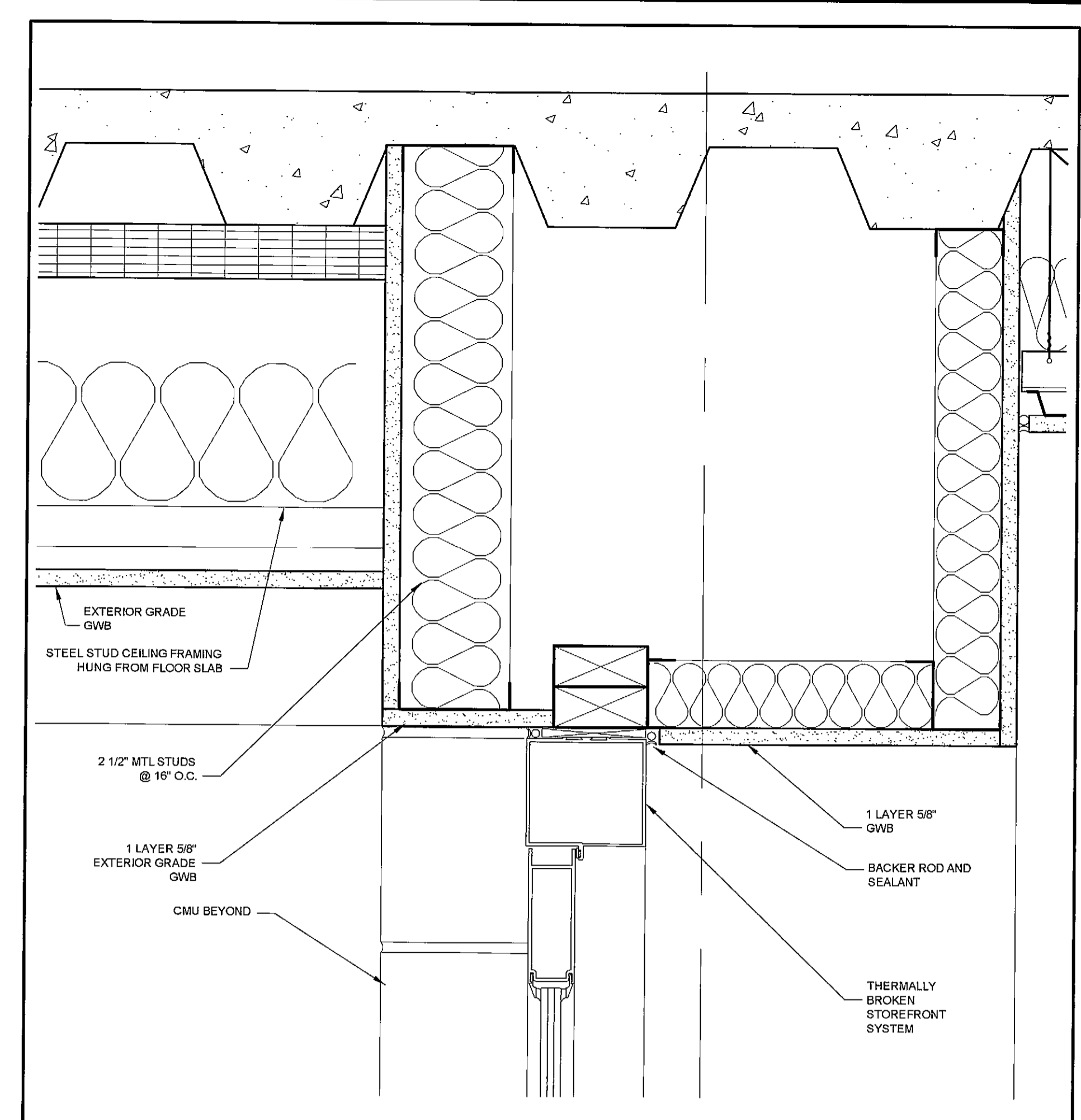
T:\00_TFH Projects\042_Chestnut Street\Construction Documents\05-Details\0423-Section Details\ecover.dwg, 2/24/2005 4:27:42 PM, HP DesignJet 7500 (E_A0) Color.pst



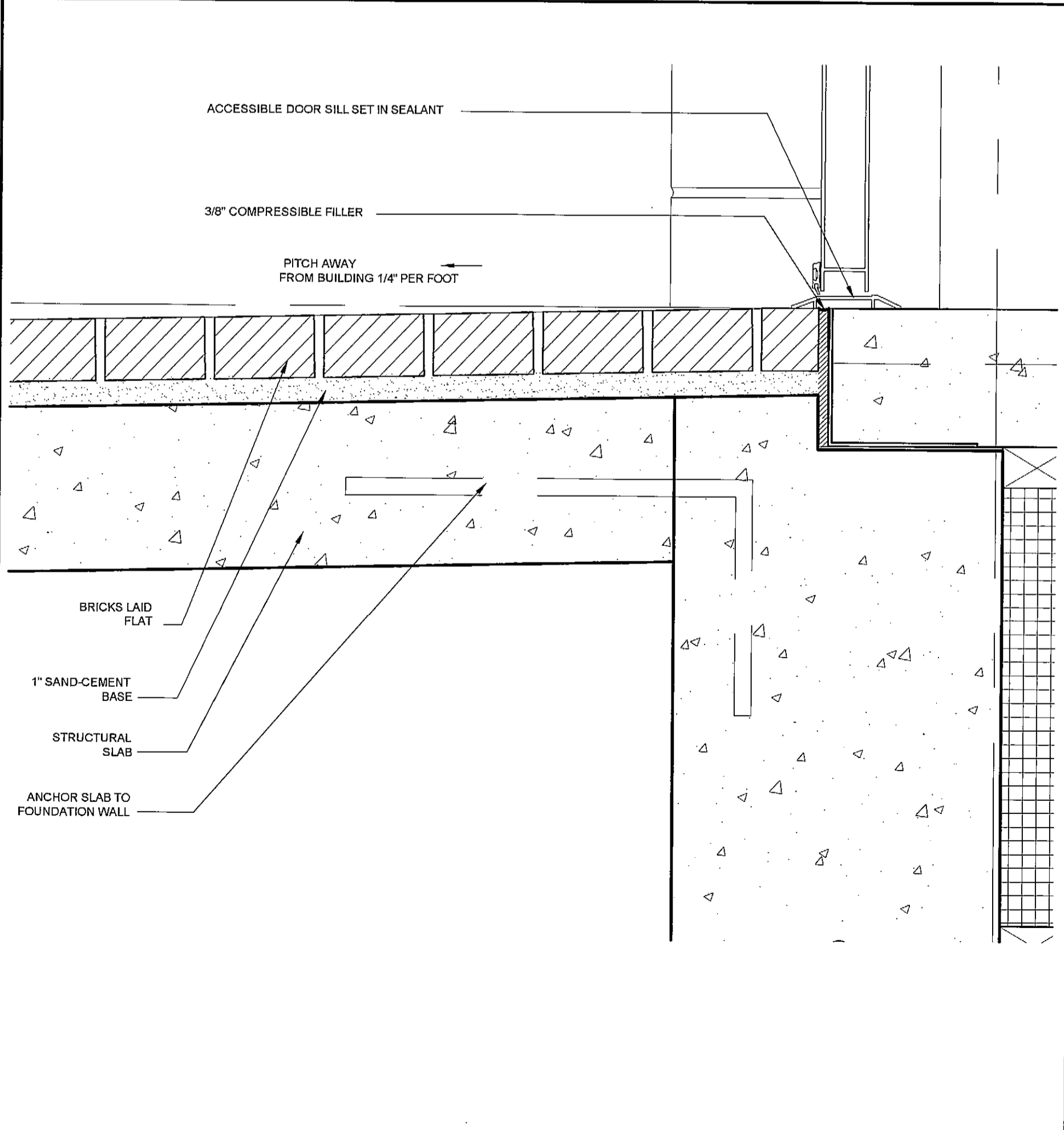
6 EXTERIOR DETAIL
A5.4 1-1/2" = 1'-0"



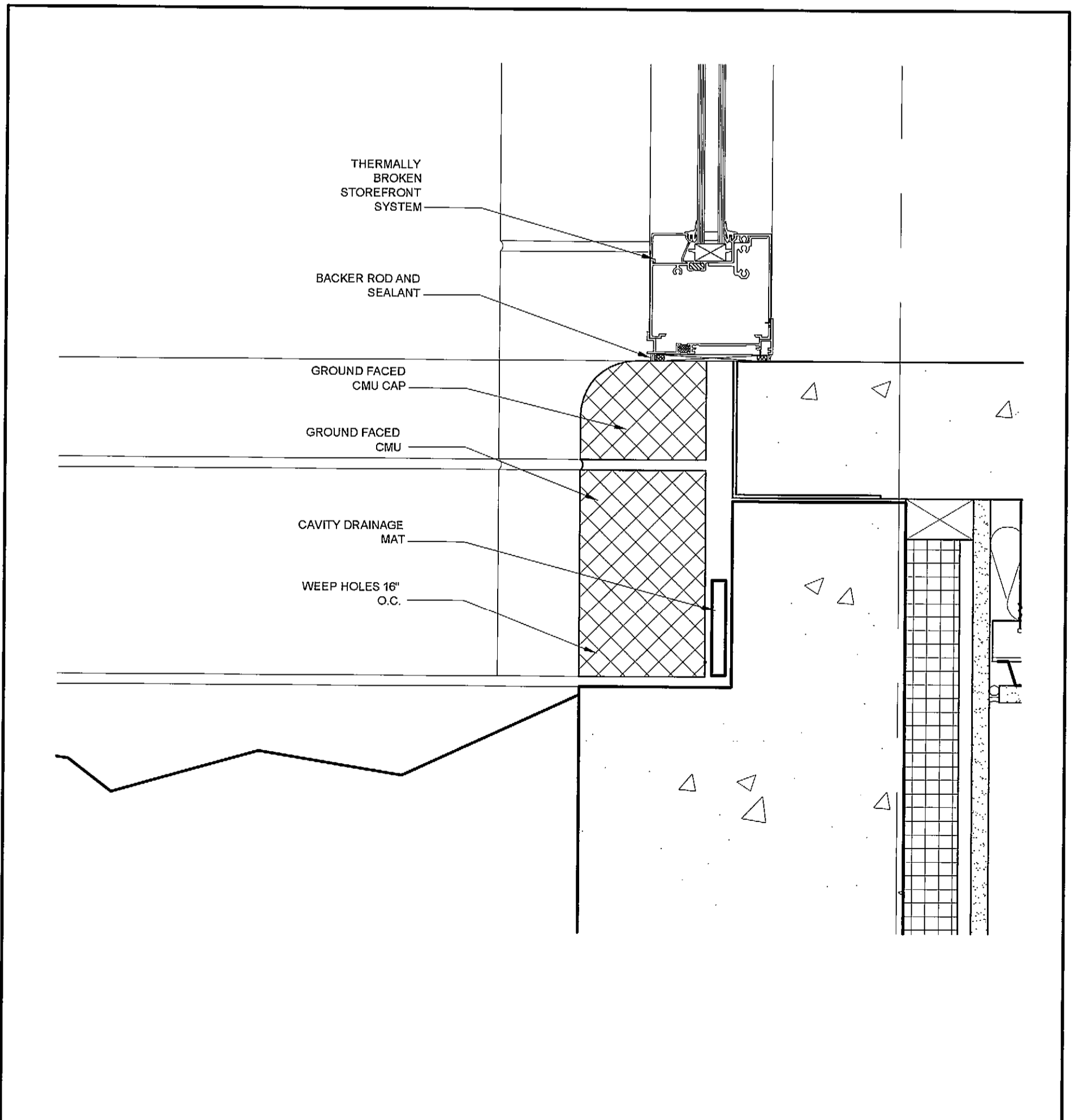
5 EXTERIOR DETAIL
A5.4 3" = 1'-0"



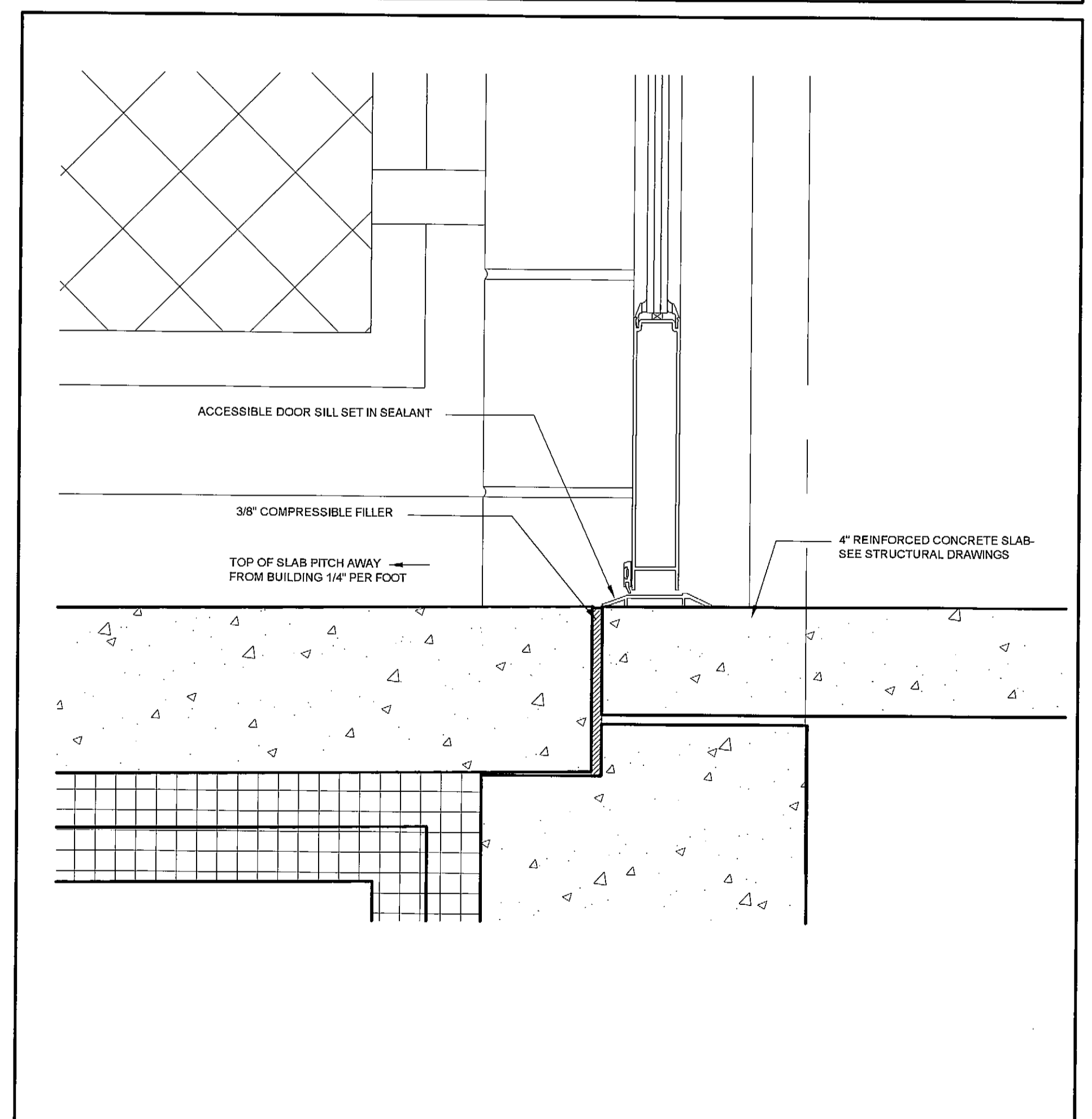
4 EXTERIOR DETAIL
A5.4 3" = 1'-0"



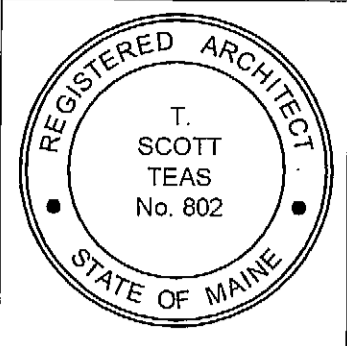
3 EXTERIOR DETAIL
A5.4 3" = 1'-0"



2 EXTERIOR DETAIL
A5.4 1" = 1'-0"



1 EXTERIOR DETAIL
A5.4 3" = 1'-0"



© 2005 TFH ARCHITECTS

CHESTNUT STREET LOFTS
URBAN REVITALIZATION PROJECT
BY CHESTNUT STREET LLC.
PORTLAND, MAINE

TFH ARCHITECTS
100 COMMERCIAL STREET
PORTLAND MAINE 04101
TELEPHONE 207 775 6141
ARCHITECTURE PLANNING

CONSULTANTS:
Civil Use Consultants
866 Riverside Street
Portland, ME 04103
207-878-3313
Structural
Structural Design Consulting
22 Oakwood Drive
Old Orchard Beach, ME 04064
207-634-8000
MECHANICAL
Whitney Engineering
10 Danforth Street
Portland, ME 04101
207-874-7449
ELECTRICAL
Bennett Engineering
7 Bennett Road
Fryeburg, ME 04032
207-865-8475

REVISIONS:
2 100% CONSTRUCTION DOCUMENTS 02.24.06

DATE: 12.7.05
PROJECT No. 0422
DRAWN BY: WFA
CHECKED BY: TST
SCALE: AS NOTED

SHEET TITLE:
SECTION DETAILS

A5.4