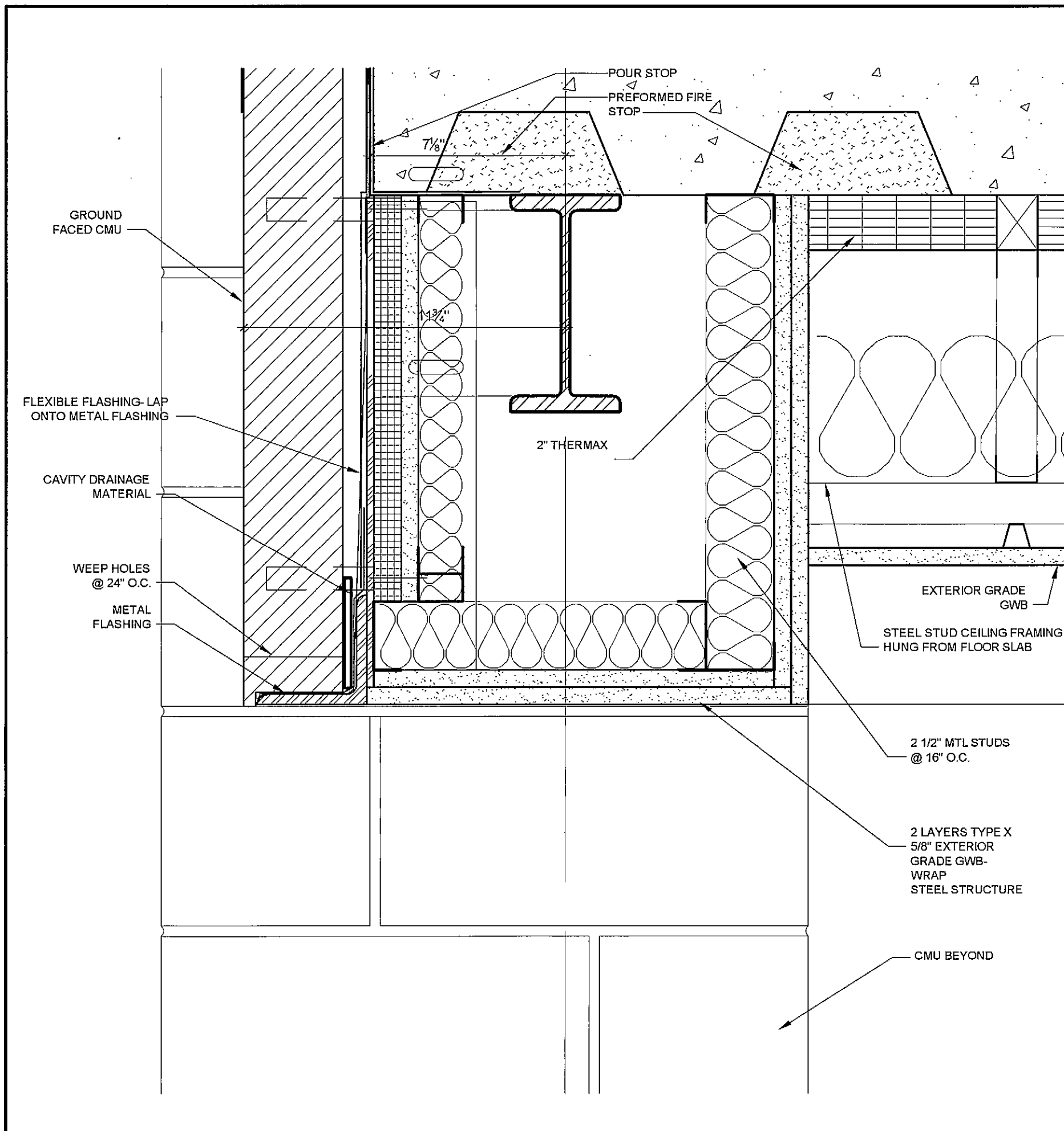
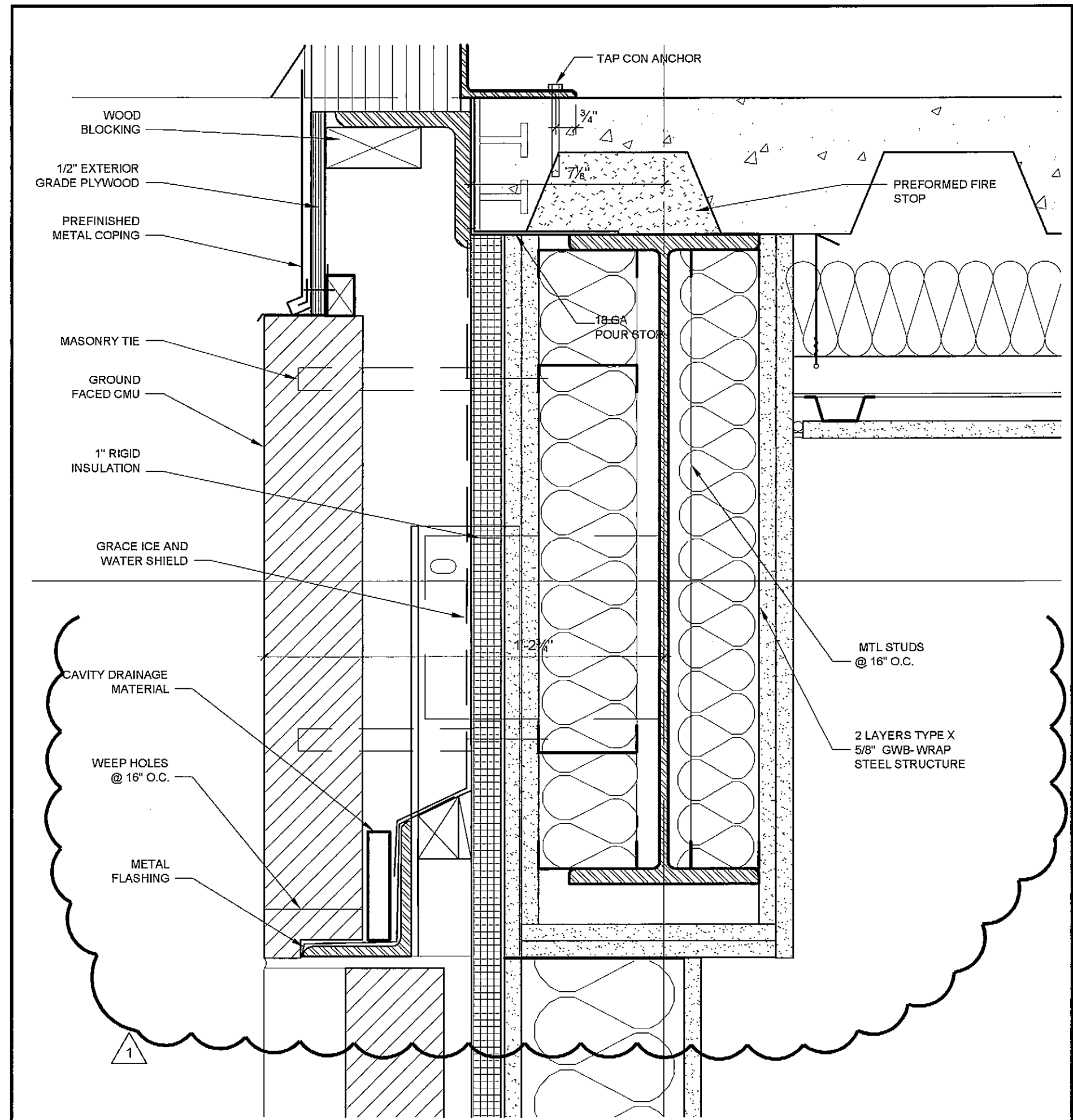


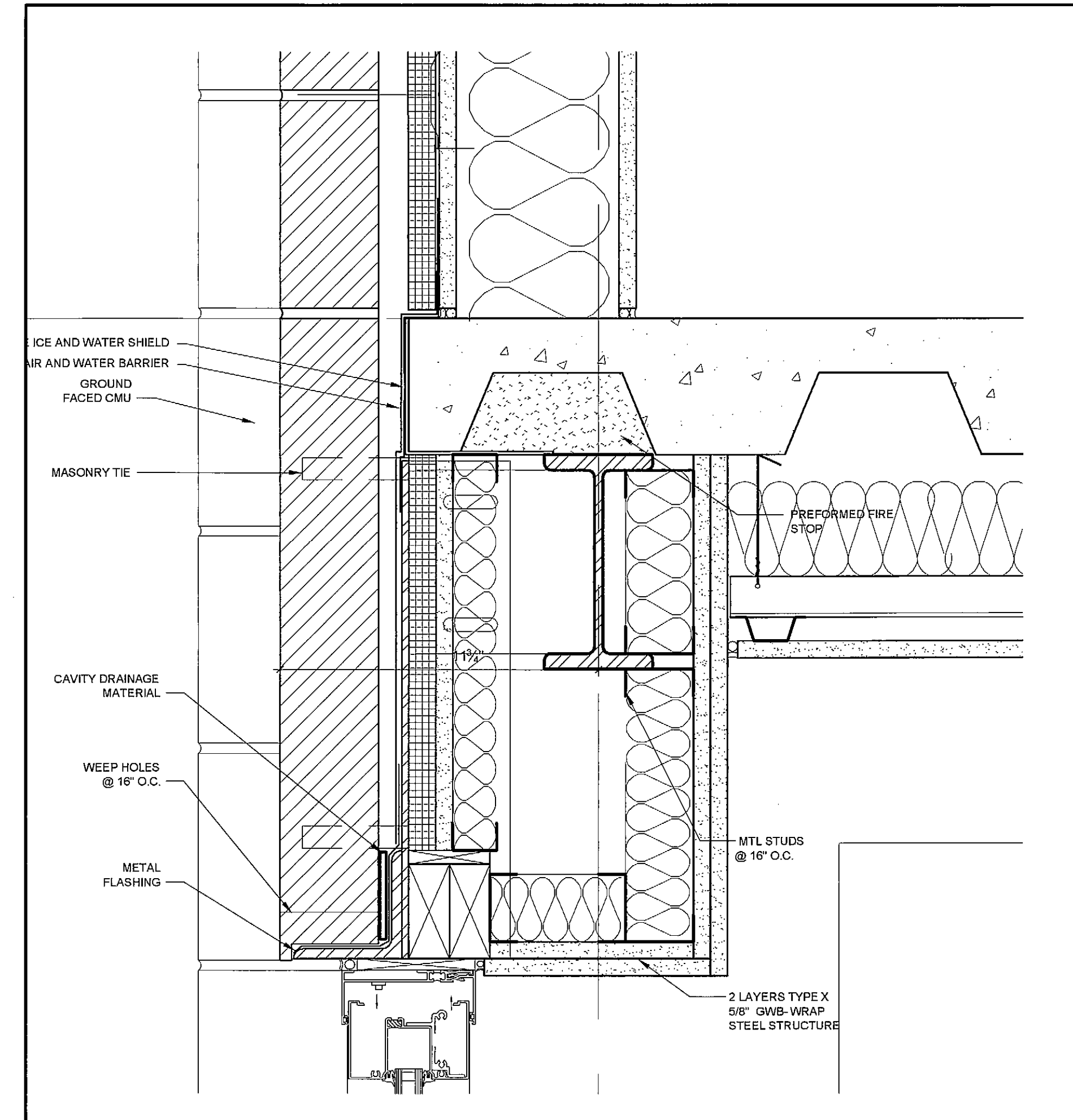
T:\00_TFH Projects\0422_Chestnut Street\Construction Documents\05-Details\0422-Section Details_revised.dwg 2/24/08 4:24:53 PM, HP DesignJet 750C (E_A) ColorJet



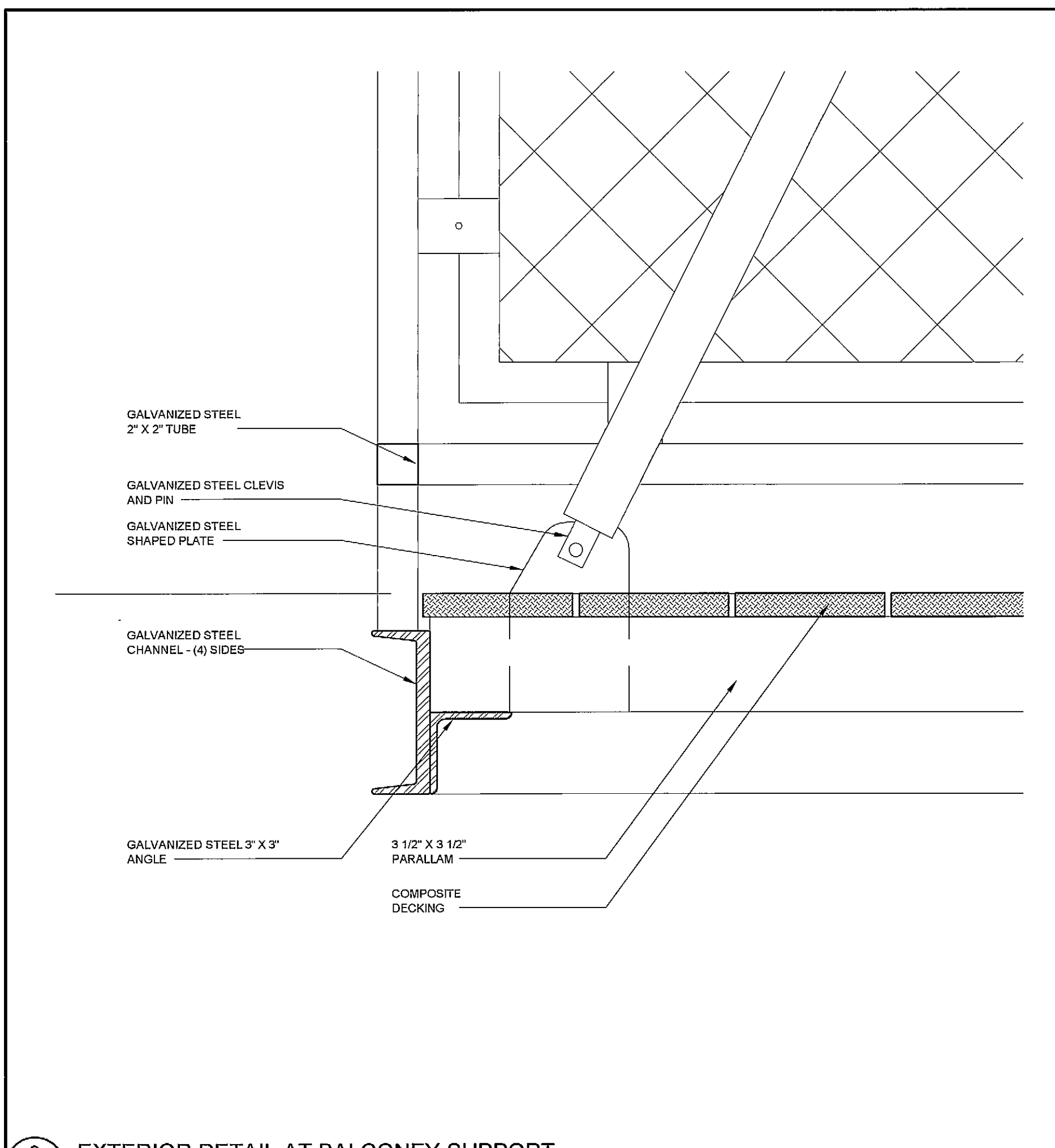
6 EXTERIOR DETAIL
A5.3 3" = 1'-0"



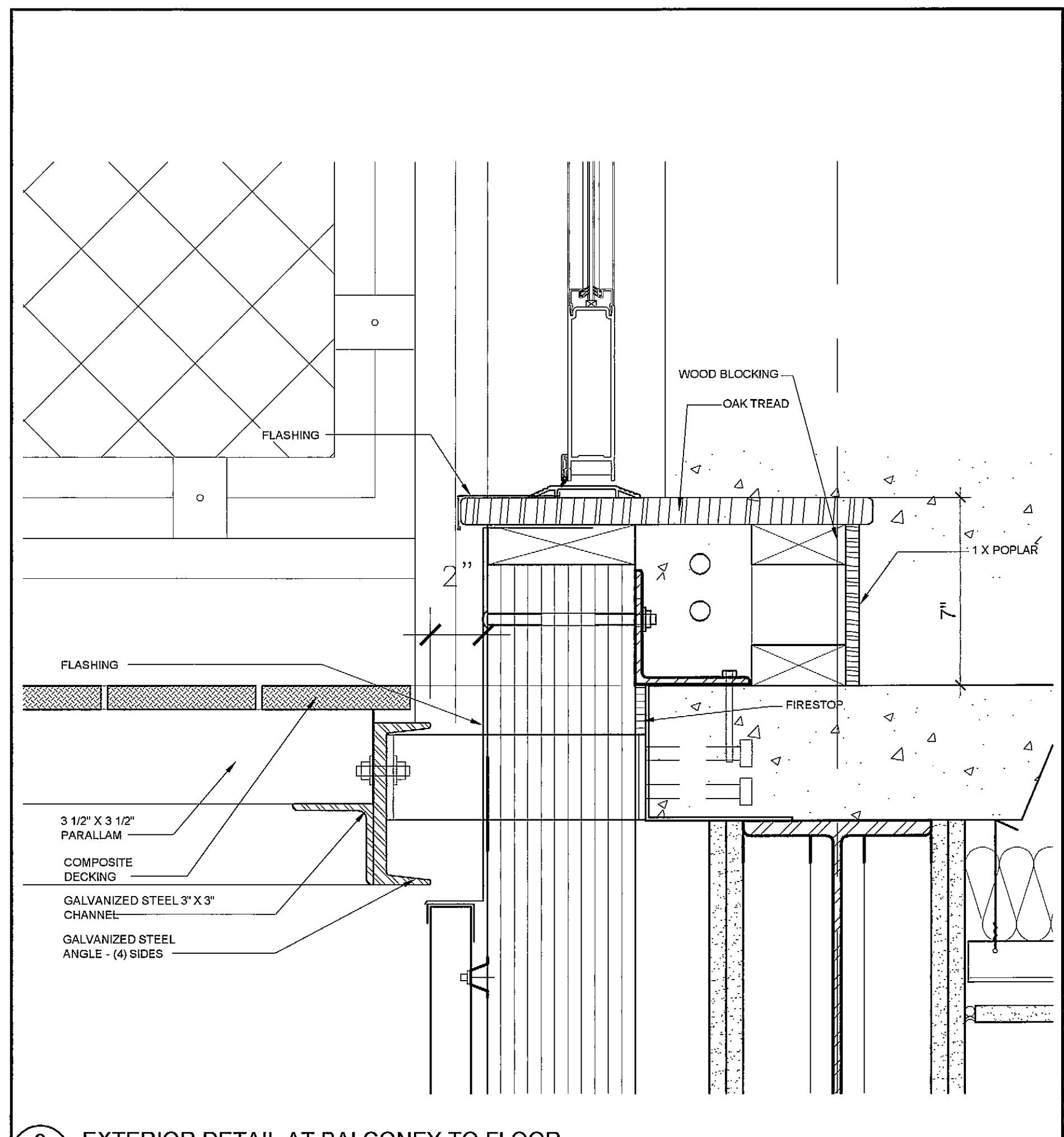
5 EXTERIOR DETAIL
A5.3 3" = 1'-0"



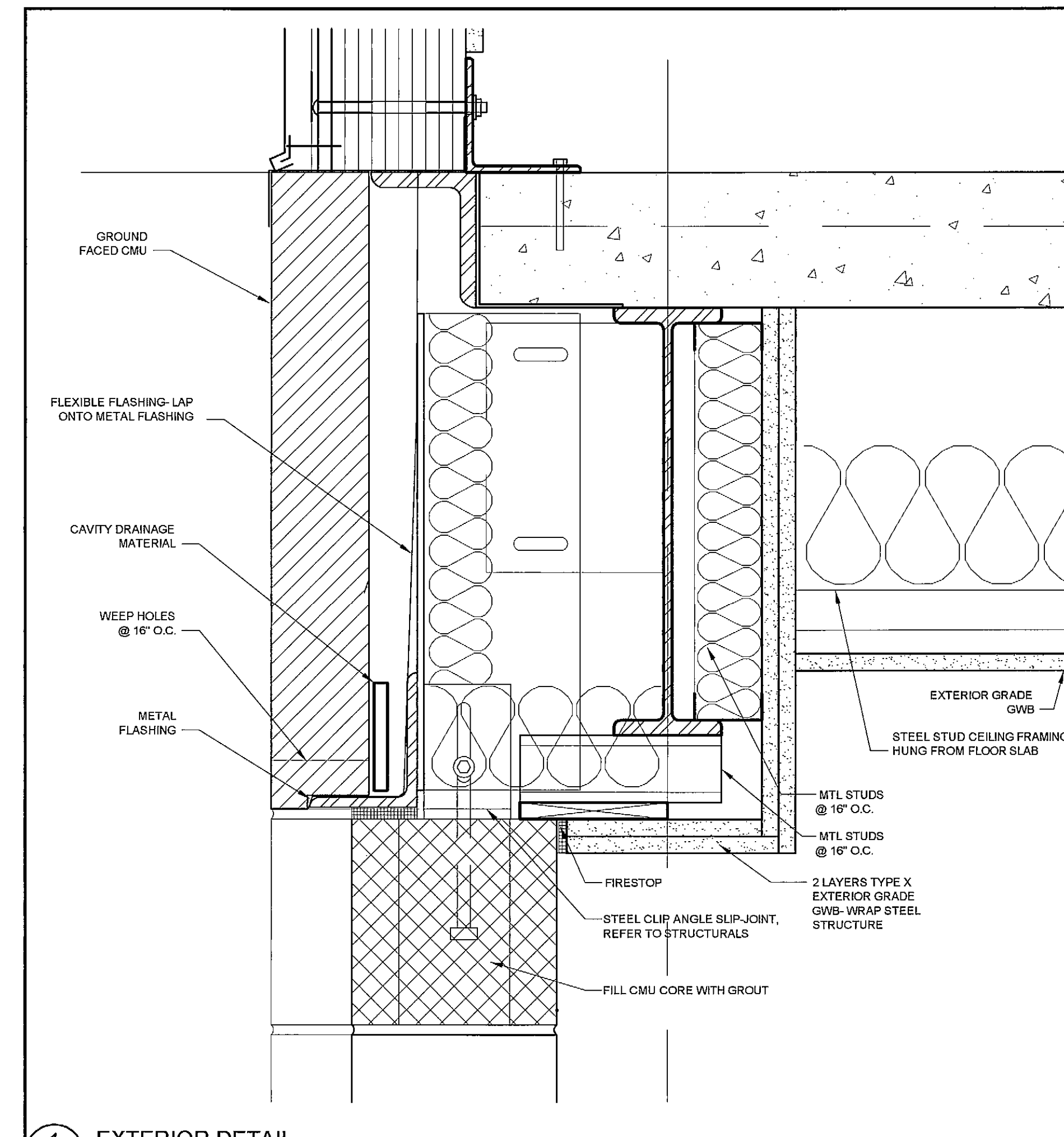
4 EXTERIOR DETAIL
A5.3 3" = 1'-0"



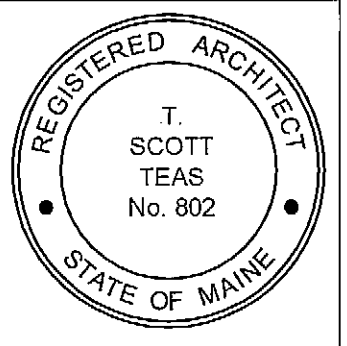
3 EXTERIOR DETAIL AT BALCONY SUPPORT
A5.3 3" = 1'-0"



2 EXTERIOR DETAIL AT BALCONY TO FLOOR
A5.3 3" = 1'-0"

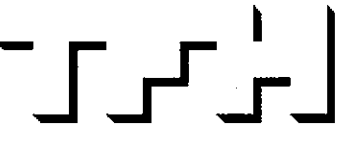


1 EXTERIOR DETAIL
A5.3 3" = 1'-0"



© 2005 TFH ARCHITECTS

CHESTNUT STREET LOFTS
URBAN REVITALIZATION PROJECT
BY CHESTNUT STREET LLC.
PORTLAND, MAINE



TFH ARCHITECTS
100 COMMERCIAL STREET
PORTLAND MAINE 04101
TELEPHONE 207 775 6141
ARCHITECTURE PLANNING

CONSULTANTS:
Civil
Land Use Consultants
588 Riverside Street
Portland, ME 04103
207-678-2313
STRUCTURAL
Structural Design Consulting
22 Colburn Drive
Old Orchard Beach, ME 04054
207-934-8038
MECHANICAL
Whitney Engineering
10 Danforth Street
Portland, ME 04101
207-474-7449
ELECTRICAL
Bennett Engineering
7 Bennett Road
Fryeburg, ME 04052
207-956-6476

REVISIONS:
1 REVISED BY ADDENDUM #1 1.20.05
2 100% CONSTRUCTION DOCUMENTS 02.24.06

DATE: 12.7.05
PROJECT No. 0422
DRAWN BY: WFA
CHECKED BY: TST
SCALE: AS NOTED

SHEET TITLE:
SECTION DETAILS

A5.3