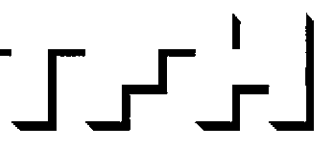


© 2005 TFH ARCHITECTS

**CHESTNUT STREET LOFTS**  
URBAN REVITALIZATION PROJECT  
BY CHESTNUT STREET LLC.  
PORTLAND, MAINE



TFH ARCHITECTS  
100 COMMERCIAL STREET  
PORTLAND MAINE 04101  
TELEPHONE 207 776 6141  
ARCHITECTURE PLANNING

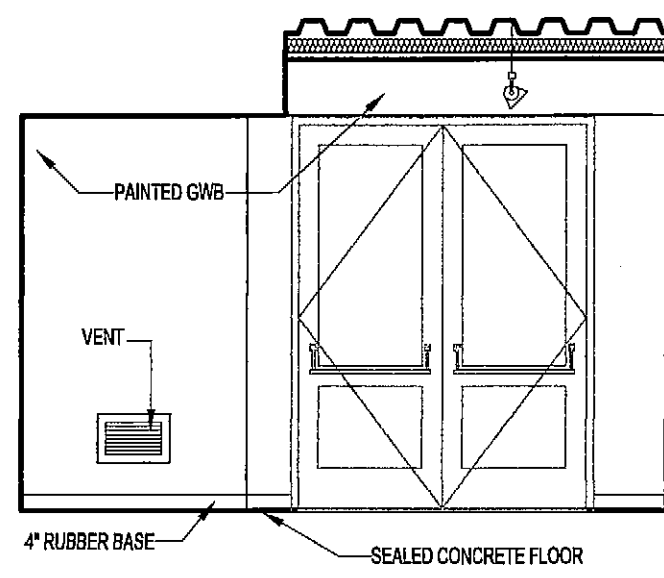
CONSULTANTS:  
**CIVIL:**  
Land Use Consultants  
606 Riverside Street  
Portland, ME 04103  
207-479-7513  
**STRUCTURAL:**  
Structural Design Consulting  
22 Chestnut Drive  
634 Chestnut Street, ME 04054  
207-434-8038  
**MECHANICAL:**  
Whitney Engineering  
10 Danforth Street  
Portland, ME 04101  
207-474-7469  
**ELECTRICAL:**  
Sennett Engineering  
7 Bennett Road  
Freeport, ME 04032  
207-855-9475

REVISIONS:  
2 100% CONSTRUCTION DOCUMENTS  
02.24.08

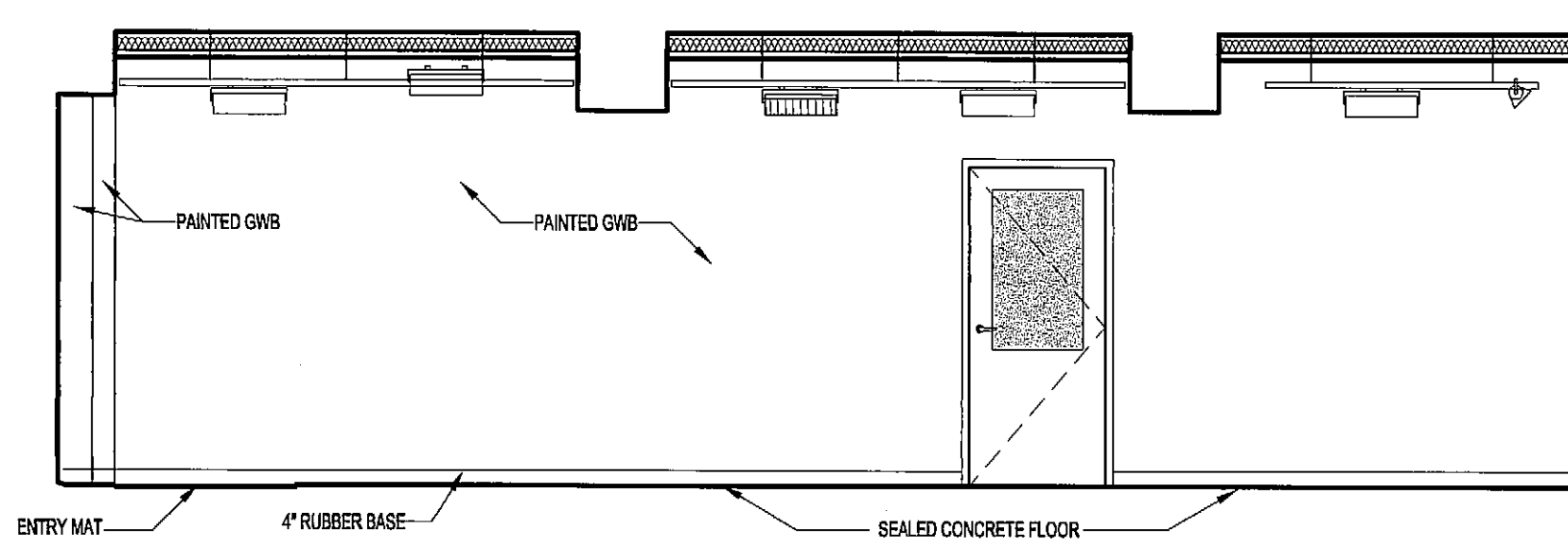
DATE:  
PROJECT No. 0422  
DRAWN BY: NJP  
CHECKED BY: TST  
SCALE: AS NOTED

SHEET TITLE:  
1ST FLOOR  
LOBBY-100  
ELEVATIONS

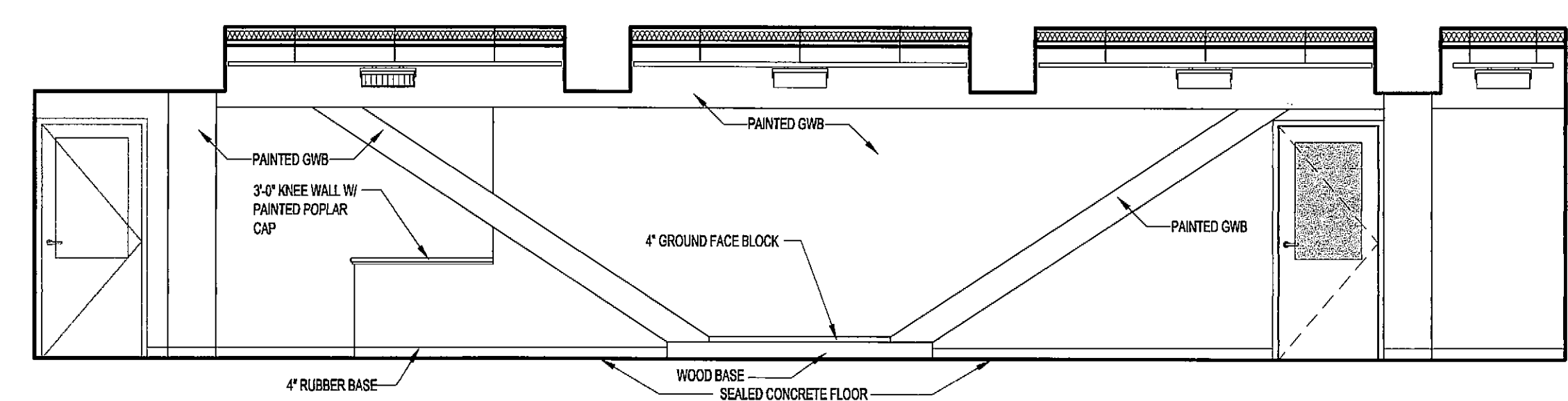
A4.2



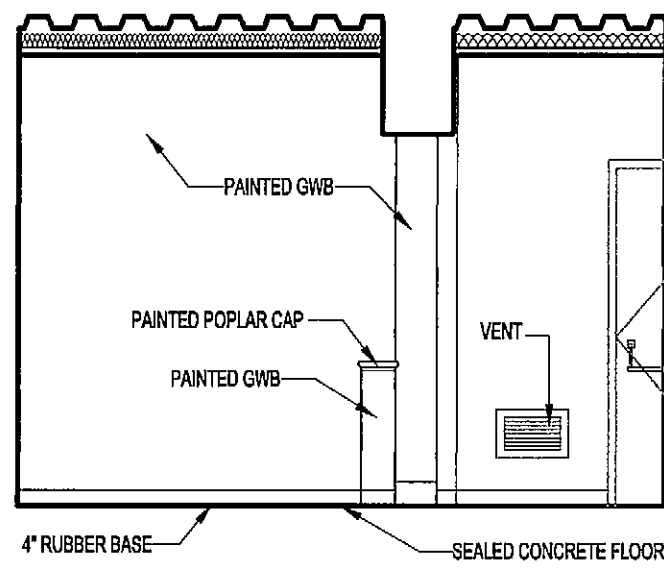
6 LOBBY 100 ELEVATION  
A4.2 1/4" = 1'-0"



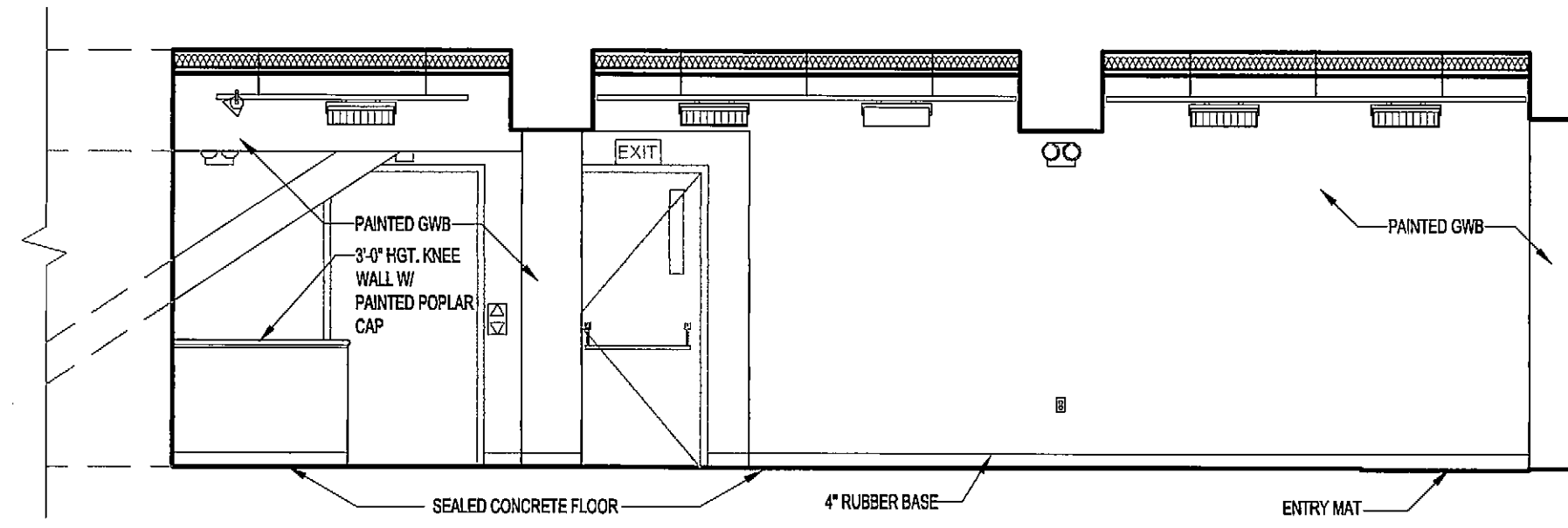
5 LOBBY 100 ELEVATION  
A4.2 1/4" = 1'-0"



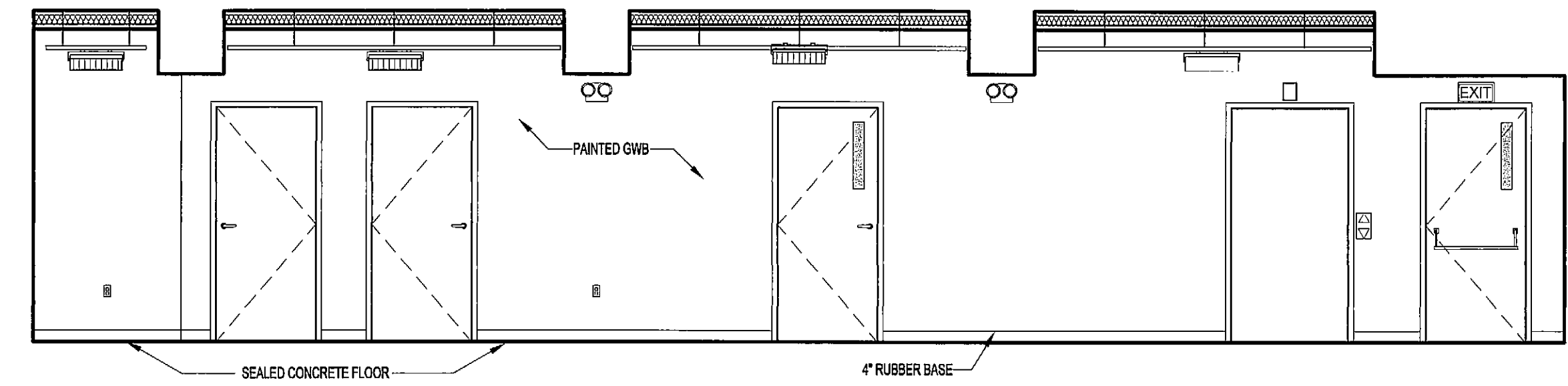
4 LOBBY 100 ELEVATION  
A4.2 1/4" = 1'-0"



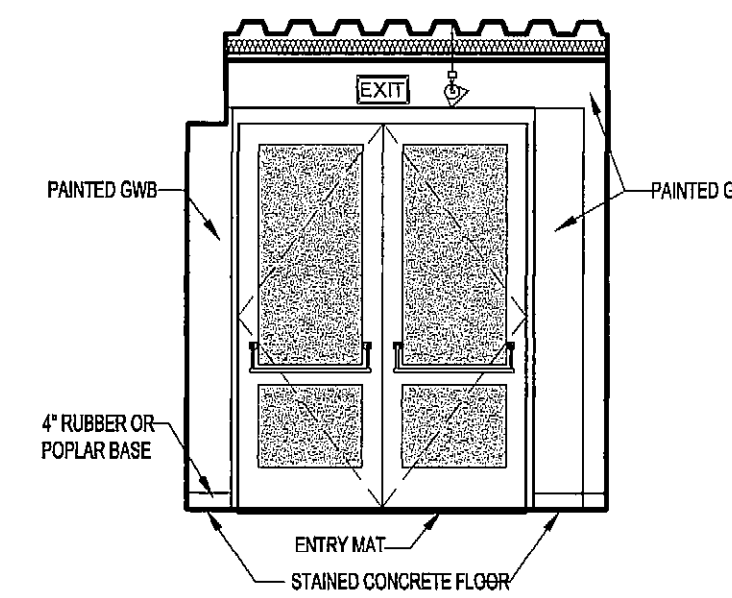
3 LOBBY 100 ELEVATION  
A4.2 1/4" = 1'-0"



2 LOBBY 100 ELEVATION  
A4.2 1/4" = 1'-0"

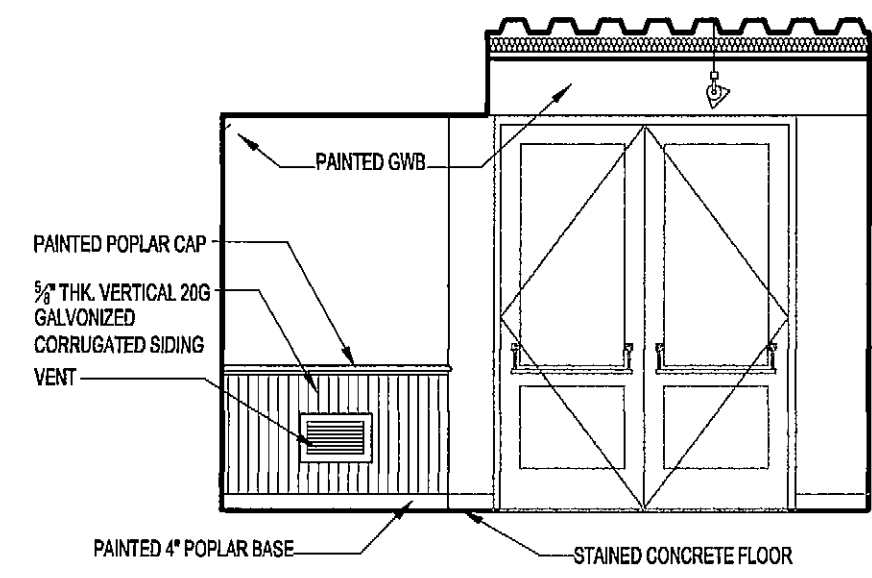


1 LOBBY 100 ELEVATION  
A4.2 1/4" = 1'-0"

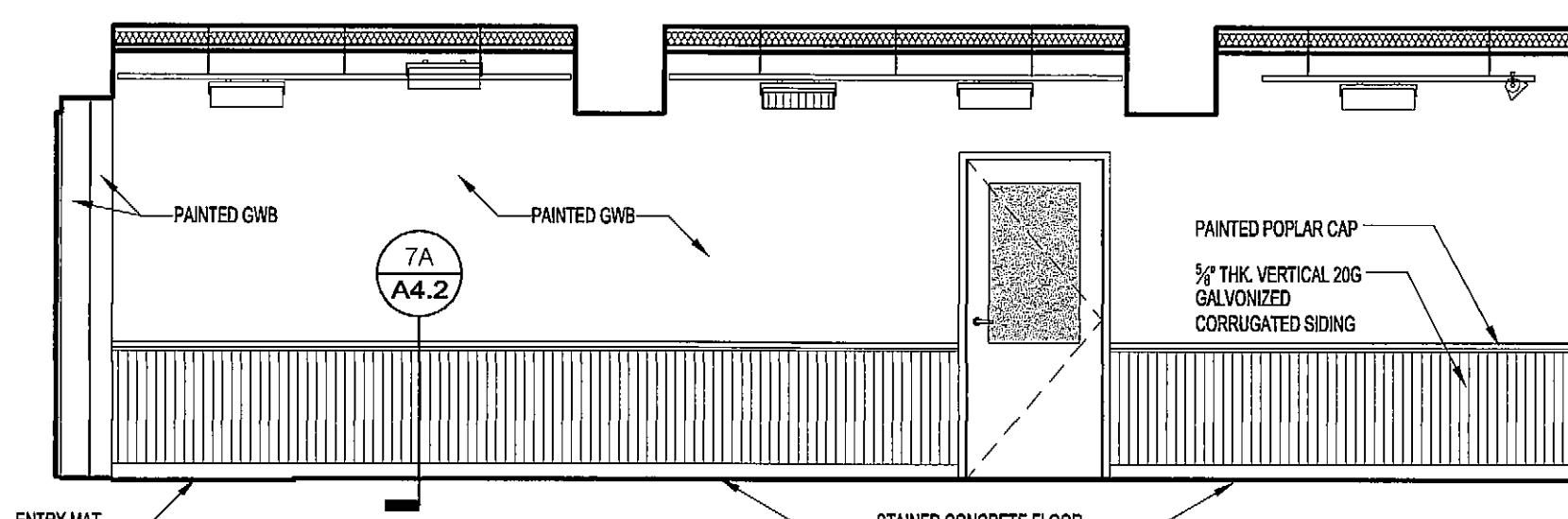


7 LOBBY 100 ELEVATION  
A4.2 1/4" = 1'-0"

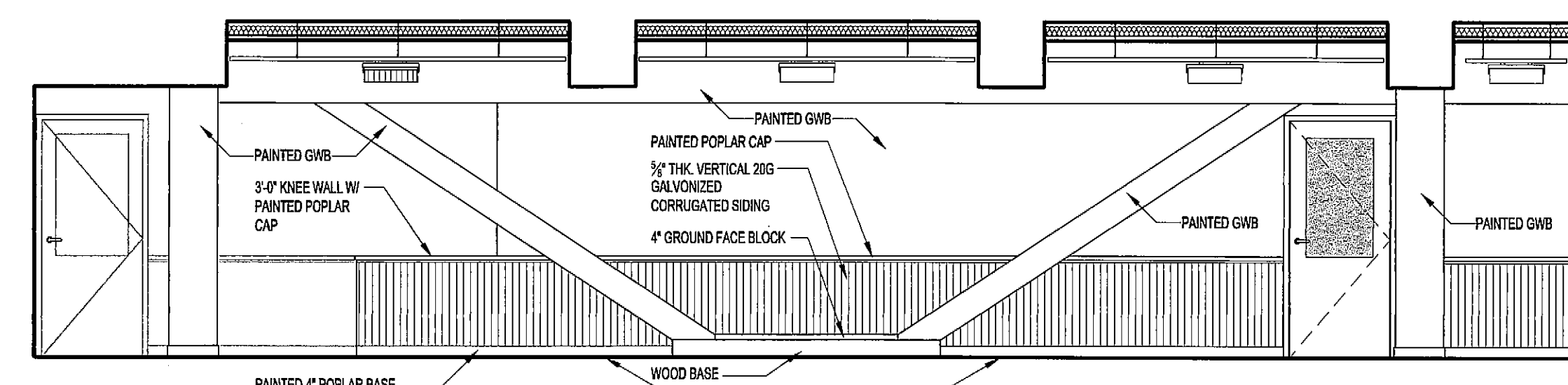
ADD ALTERNATE #2 LOBBY WAINSCOTTING AS SHOWN



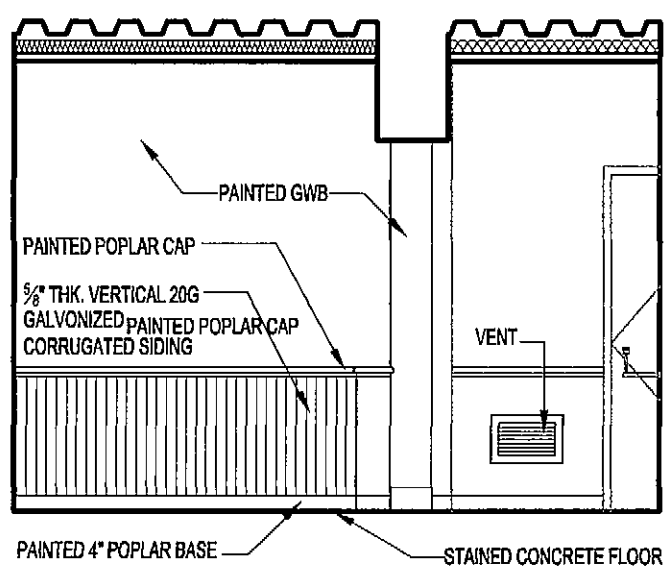
6A LOBBY 100 ELEVATION  
A4.2 1/4" = 1'-0"



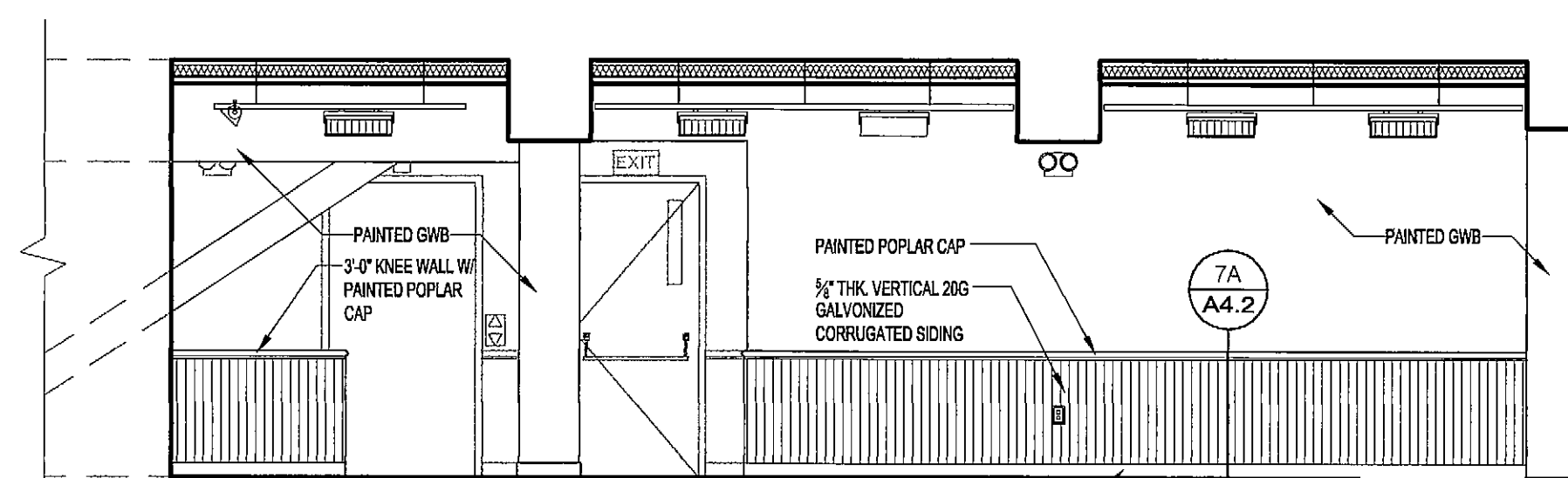
5A LOBBY 100 ELEVATION  
A4.2 1/4" = 1'-0"



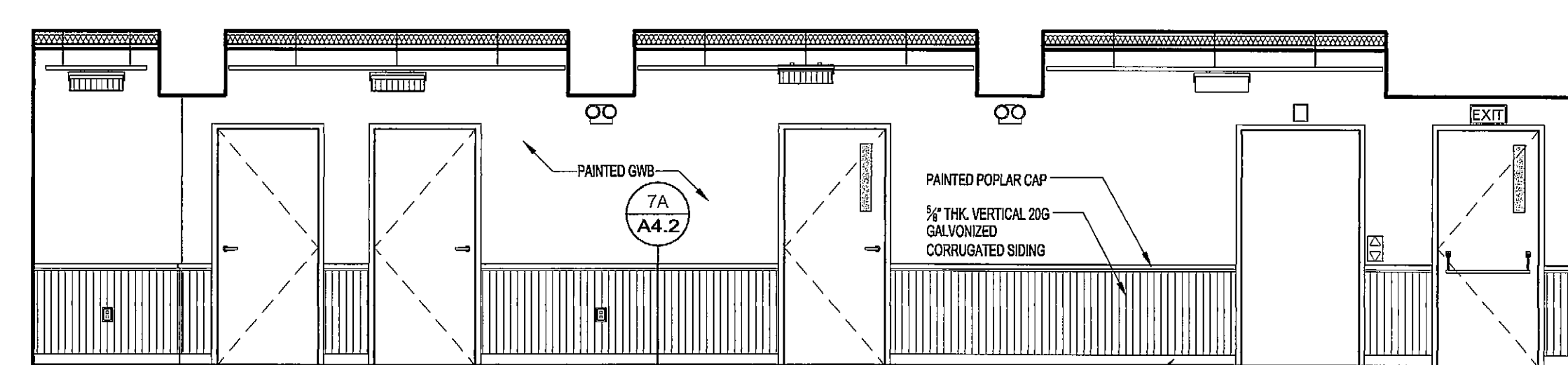
4A LOBBY 100 ELEVATION  
A4.2 1/4" = 1'-0"



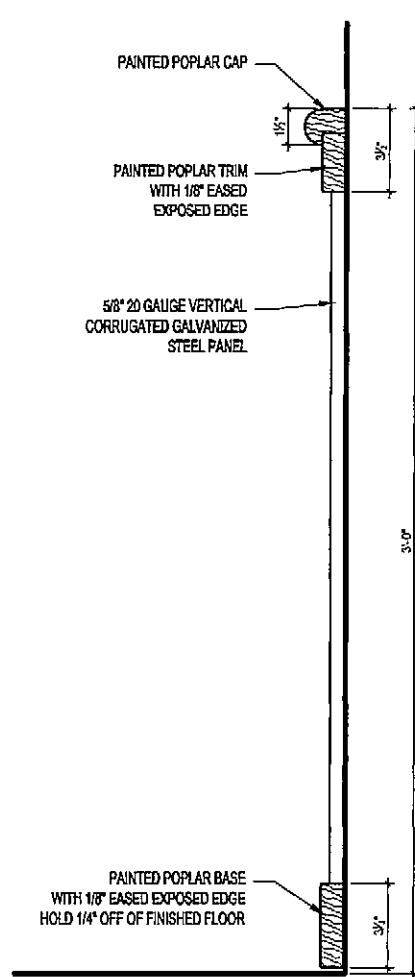
3A LOBBY 100 ELEVATION  
A4.2 1/4" = 1'-0"



2A LOBBY 100 ELEVATION  
A4.2 1/4" = 1'-0"



1A LOBBY 100 ELEVATION  
A4.2 1/4" = 1'-0"



7A WAINSCOT SECTION  
A4.2 1-1/2" = 1'-0"